

Visualize 2045

Technical Input Solicitation: for LRTP, TIP 2022 Update and Air Quality Conformity Analysis

Stacy Cook
Principal Planner

TPB Technical Committee
November 6, 2020

Agenda Item #7

visualize
2045 A long-range
transportation plan
for the National
Capital Region



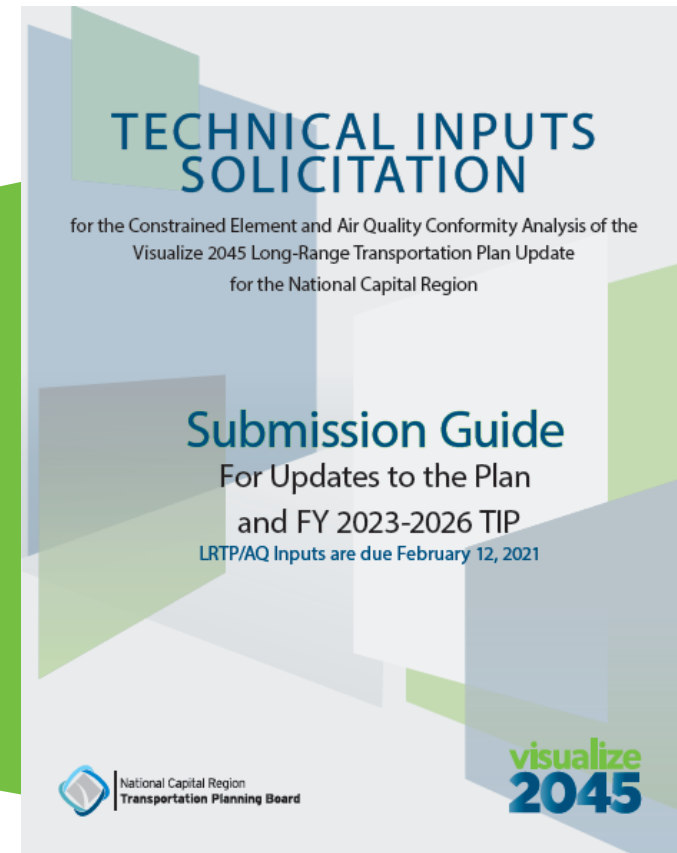
[Flickr/BeyondDC](#)

Agenda

- 1. Review November Board presentation:**
 - Purpose of the Technical Input Solicitation
 - Contents
 - Updates (from 2018)
 - Regional Policy Questions
 - Board actions
- 2. Updates to the form**
- 3. Q & A**

Purpose of Technical Input Solicitation

- **Layout process and requirements** for submitting projects to TPB for the Plan, TIP, and Air Quality Conformity Analysis
- Provide transparency
- Provide technical instructions and resources
- Link TPB priorities and federal requirements to projects, programs, and policies submitted by member agencies



Why does this document matter?

Local needs



Federal requirements



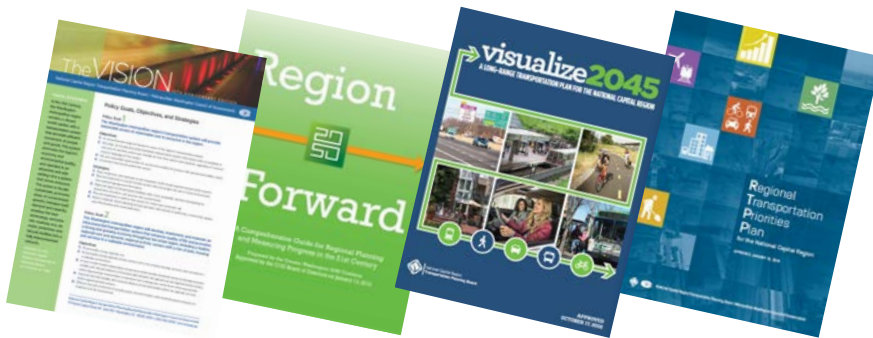
TPB priorities



Inputs to the LRTP
and Air Quality
Conformity Analysis



The future of
our regional
transportation
system

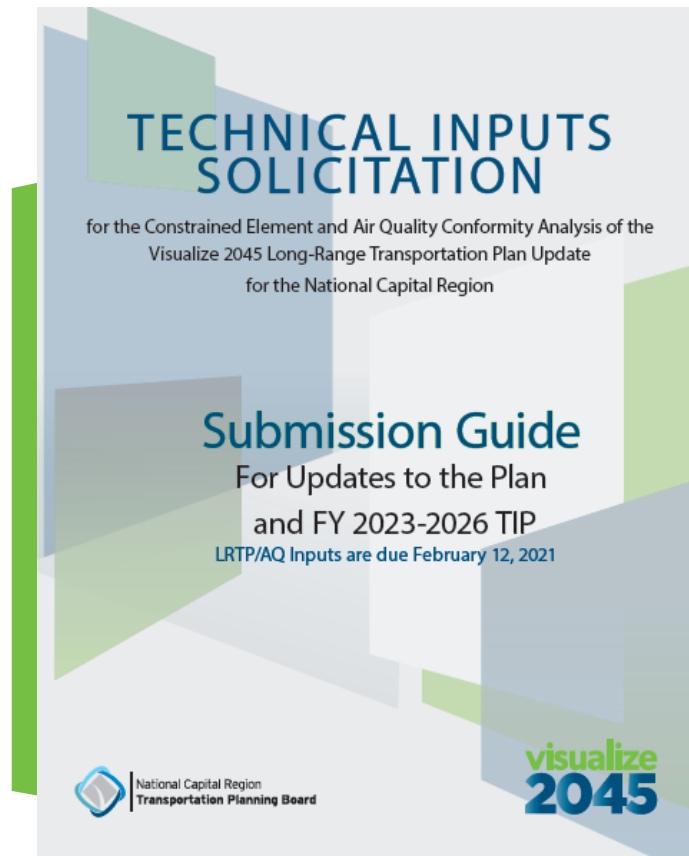


The Plan: where a regional vision and local actions come together



Top 5 things to know about the Technical Input Solicitation

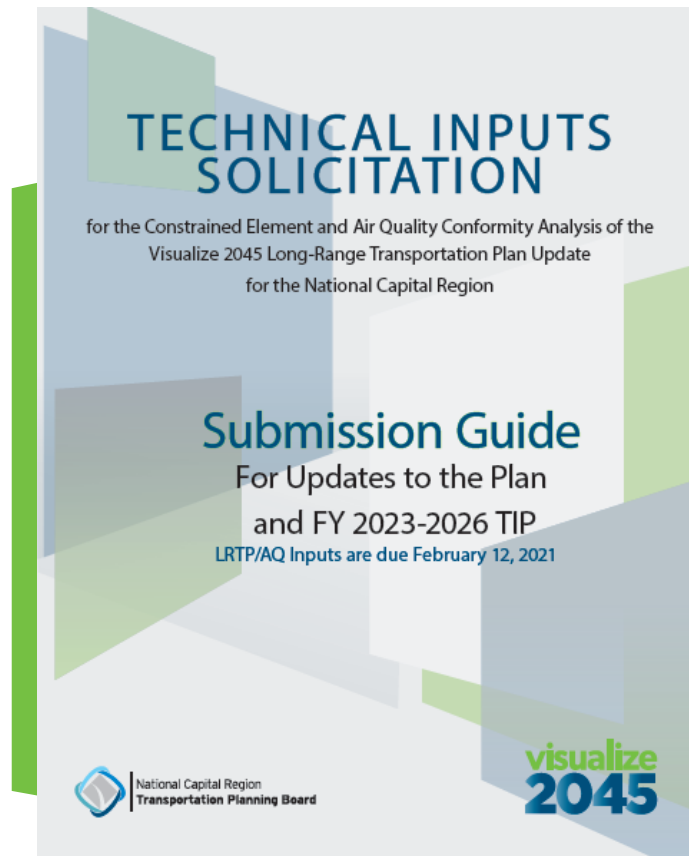
- TPB will be asked to approve the document in December 2020
- This is the primary way TPB gets the technical details that supports performance analysis and the air quality conformity determination
- Projects are developed at the local level and are submitted to TPB
- Projects are expected to address regional and federal priorities – input form asks if and how
- TPB uses project information to communicate to the public



Updates to the Technical Input Solicitation (compared to last TPB approval)

- Editorial changes for clarity
- Updated schedule for new Plan, Air Quality Conformity and TIP cycle
- New design to reflect new Plan
- Updated policy questions to reflect TPB priorities

TPB has a new online database known as Project InfoTrak that members will use to submit projects



Technical Input Solicitation Contents

- Introduction
- Requirements
- Project Inputs
- Plan and TIP Update Schedule
- Responsible Agencies
- Federal and Regional Policies
 - Seven Transportation Initiatives for a Better Future
 - Shared Regional Goals and Priorities
 - Federal Requirements and Policy Considerations
 - Performance-Based Planning and Programming
- Basic Submission Instructions for Conformity Inputs
- Amendments to the Plan and TIP
- Resources and Maps

Technical Input Solicitation Contents

- Introduction
- Requirements
- Project Inputs
- Plan and TIP Update Schedule
- Responsible Agencies
- Federal and Regional Policies
 - Seven Transportation Initiatives for a Better Future
 - Shared Regional Goals and Priorities
 - Federal Requirements and Policy Considerations
 - Performance-Based Planning and Programming
- Basic Submission Instructions for Conformity Inputs
- Amendments to the Plan and TIP
- Resources and Maps



Technical instructions



Technical instructions

Technical Input Solicitation Contents

- Introduction
 - Requirements
 - Project Inputs
 - Plan and TIP Update Schedule
 - Responsible Agencies
 - Federal and Regional Policies
 - Seven Transportation Initiatives for a Better Future
 - Shared Regional Goals and Priorities
 - Federal Requirements and Policy Considerations
 - Performance-Based Planning and Programming
 - Basic Submission Instructions for Conformity Inputs
 - Amendments to the Plan and TIP
 - Resources and Maps
- Technical instructions
- TPB Priorities
- Technical instructions
-

Technical Input Solicitation Contents

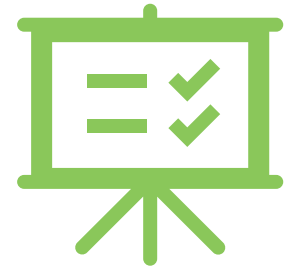
- Introduction
- Requirements
- Project Inputs
- Plan and TIP Update Schedule
- Responsible Agencies
- Federal and Regional Policies
 - Seven Transportation Initiatives for a Better Future
 - Shared Regional Goals and Priorities
 - Federal Requirements and Policy Considerations
 - Performance-Based Planning and Programming
- Basic Submission Instructions for Conformity Inputs
- Amendments to the Plan and TIP
- Resources and Maps



TPB
Priorities

A Focus on TPB priorities

- Members that submit projects must answer questions about if and how projects address the TPB Policy Framework
- Regional Transportation Priorities Plan Goals – with a new emphasis on:
 - Aspirational Initiatives
 - Equity
 - Safety
 - Climate Change mitigation targets



Questions: RTPP Goals

New equity questions

Updated climate questions

Goal	Questions
Provide a Comprehensive Range of Travel Options	<ul style="list-style-type: none"> Identify all travel mode options that this project provides, enhances, supports or promotes Is this project physically in an Equity Emphasis Area (EEA)? How does it improve equity? Does this project improve accessibility for historically transportation-disadvantaged individuals (i.e., persons with disabilities, low incomes, and/or limited English proficiency)?
Promote Regional Activity Centers	<ul style="list-style-type: none"> Does this project begin or end in an Activity Center? Does this project connect two or more Activity Centers? Does this project promote non-auto travel within one or more Activity Centers? Does this project connect an Equity Emphasis Area to an Activity Center?
Ensure System Maintenance, Preservation, and Safety	<ul style="list-style-type: none"> Does this project contribute to enhanced system maintenance, preservation, or safety?
Maximize Operational Effectiveness and Safety	<ul style="list-style-type: none"> Is this project primarily designed to reduce travel time on highways and/or transit without building new capacity (e.g., ITS, bus priority treatments, etc.)? Does this project enhance safety for motorists, transit users, pedestrians, and/or bicyclists?
Protect and Enhance the Natural Environment	<ul style="list-style-type: none"> Is this project expected to contribute to reductions in emissions of criteria pollutants, specifically, to attainment of ozone levels consistent with the National Ambient Air Quality Standard (NAAQS)? Is this project expected to contribute to meeting the regional goal of reducing greenhouse gasses by 50% below 2005 levels by 2030?
Support Interregional and International Travel and Commerce	<ul style="list-style-type: none"> Does this project enhance, support, or promote the following freight carrier modes: long-haul truck, local delivery, rail, or air freight carrier modes? Does this project enhance, support, or promote the following passenger carrier modes: air, Amtrak intercity passenger rail, intercity bus?

New Questions: Equity

Responding to: TPB July 2020 Equity Resolution

Goal: Provide a Comprehensive Range of Travel Options

- Is this project physically in an Equity Emphasis Area (EEA)? How does it improve equity?

Goal: Promote Regional Activity Centers

- Does this project connect an Equity Emphasis Area to an Activity Center?

Updated Questions: Climate Change Mitigation

Responding to: COG Regional 2030 Climate and Energy Action Plan, TPB Oct 2020 Resolution

Goal: Protect and Enhance the Natural Environment

- Is this project expected to contribute to reductions in emissions of criteria pollutants, specifically, to attainment of ozone levels consistent with the National Ambient Air Quality Standard (NAAQS)?
- Is this project expected to contribute to meeting the regional goal of reducing greenhouse gasses by 50% below 2005 levels by 2030

Updated Question: emphasizes the Aspirational Initiatives

Please provide additional written information that describes how this project further supports or advances the TPB Aspirational Initiatives, other regional goals, or needs.

- The aspirational initiatives are:
 - Bring Jobs and Housing Closer Together.
 - Expand Bus Rapid Transit and Transitways Regionwide.
 - Move More People on Metrorail.
 - Provide More Telecommuting and Other Options for Commuting.
 - Expand Express Highway Network.
 - Improve Walk and Bike Access to Transit.
 - Complete the National Capital Trail network

Transportation Planning Board

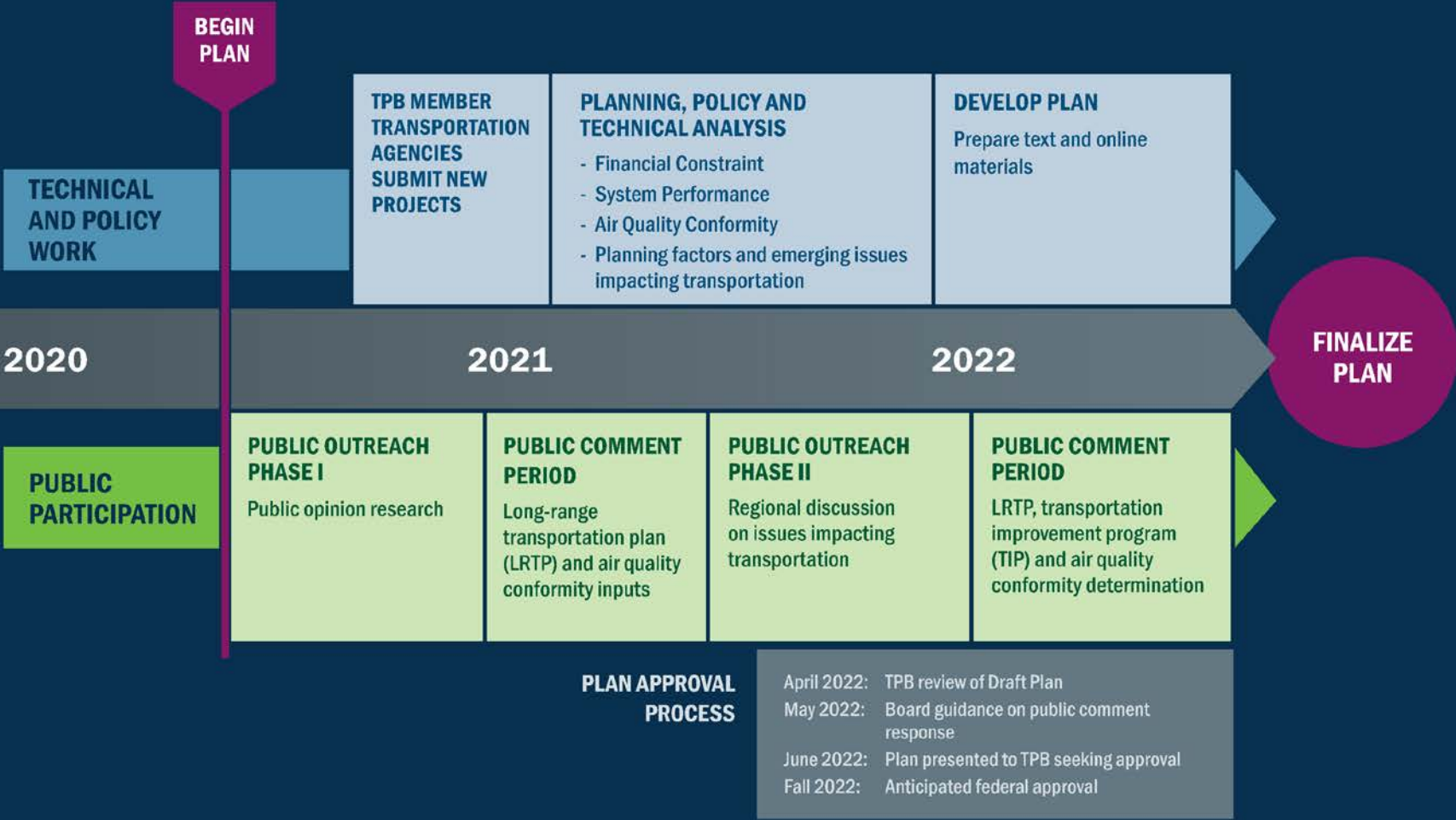
Member's role:

- Board Action: December 2020 Board will be asked to approve the Technical Input Solicitation
- Continue to encourage plans, programs and policies that implement the Aspirational Initiatives and other regional policy priorities



Flickr/BeyondDC

TPB's Visualize 2045 Long-Range
Transportation Plan Update (2022)



Technical Input Solicitation Detailed Instructions and Form updates

- October 2020 updates:
 - Climate target questions
 - Question numbering

Stacy M. Cook

Principal Planner

(202) 962-3335

scook@mwkog.org

mwkog.org/TPB

Metropolitan Washington
Council of Governments

777 North Capitol Street NE,
Suite 300

Washington, DC 20002