

 Peninsula Compost Group

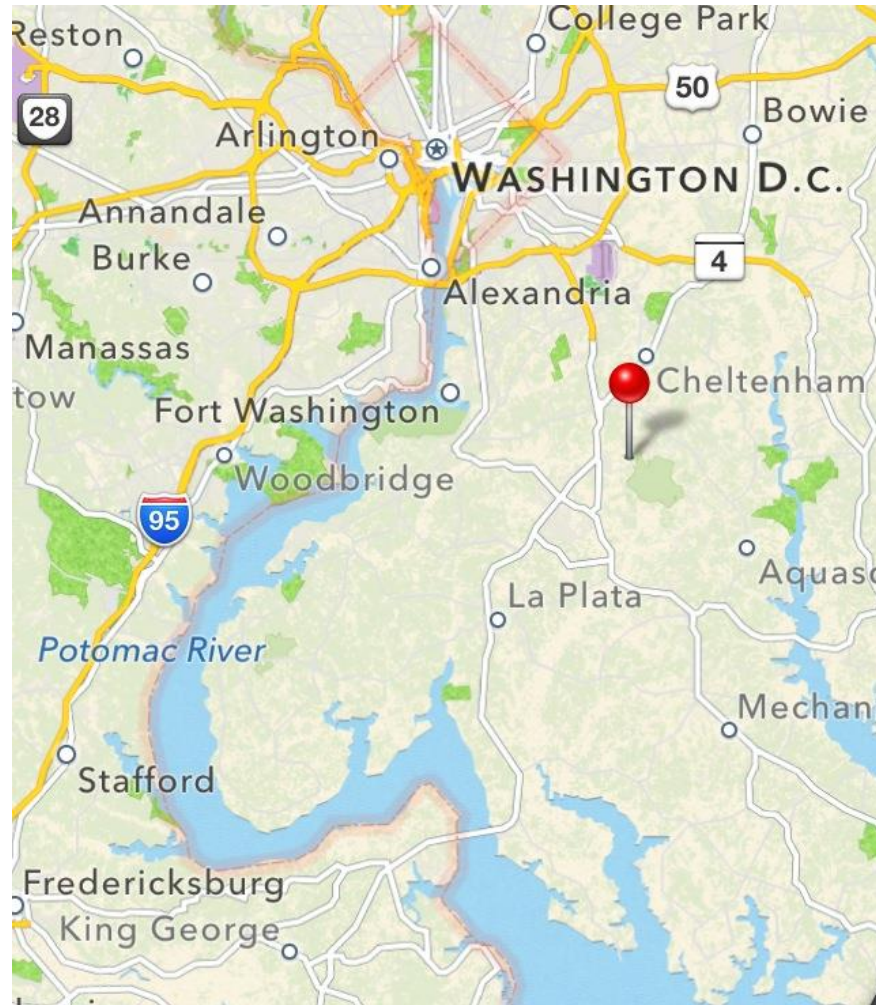
Phil Auld, CEO

- ▶ Over 30 years management experience in the solid waste business
- ▶ Managed operations for the 2nd largest and 4th largest waste companies in the US, and managed 15 hauling companies (>3100 trucks), and > 25 landfills and recycling facilities

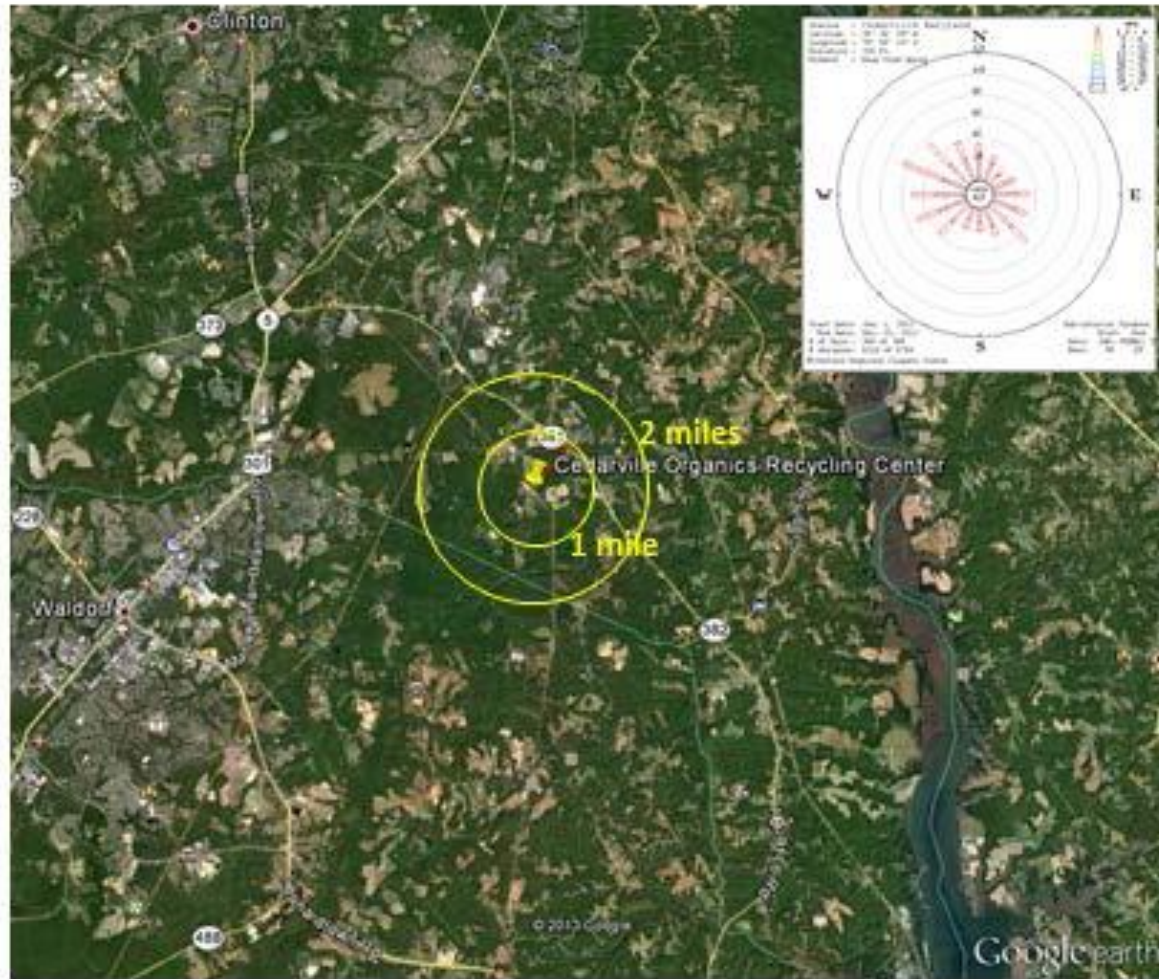
Nelson Widell, Co-Founder

- ▶ Over 30 years of experience in the composting industry
- ▶ Founding member of the US Compost Council
- ▶ Developed 12 compost facilities in the US.

CORC Site Location Map



CORC Vicinity Aerial Map



Site

- ▶ Reclaimed Sand and Gravel Pit
- ▶ Compatible Zoning – Agriculture
- ▶ Isolated from Residential Areas

CORC Site Aerial Map



Feedstocks



- ▶ **Yard Trim**
- ▶ **Wood Waste**
- ▶ **Pre- and Post- Consumer Food Scraps**
- ▶ **CORC will compost biodegradable waste materials**

Acceptable Waste



▶ PRODUCE

- ❖ Vegetables, fruits, salads, fruit bar wastes, fruit and vegetable trims

▶ FLORAL

- ❖ Spoiled flowers, trims, wrapping paper, paper towels

▶ BAKERY

- ❖ All types of old breads and bakery and bakery waste, excess batter, lining paper

▶ DAIRY - DELI - SEAFOOD

- ❖ Any dairy, deli, seafood waste, soiled paper

▶ GROCERY

- ❖ Post date and spilled items, all dry goods

(Pasta, beans, flour, rice, cereal, sugar, coffee, tea, etc)

Acceptable Waste



▶ FROZEN FOOD

- ❖ All frozen foods including vegetables, fruits, meats, fish, poultry, soiled paper

▶ PAPER

- ❖ Waxed and plain cardboard, cardboard tubing, tissue, paper towels, paper placemats, napkins, etc. coin wrappers, receipts

▶ WOOD WASTE

- ❖ Pallets, dimensional lumber, wood chips, sawdust, plywood, tree trimmings, etc.

(No Painted Wood, Creosote or Pressure Treated)

▶ YARD WASTE

- ❖ Brush, leaves, grass, clean wood, clearing debris, Christmas trees, stumps, bushes, flowers, etc.

Acceptable Waste



▶ PAPER MATERIALS

- ❖ Soiled or clean paper, cardboard waxed or plain, cardboard egg cartons and fruit trays, or any paper or cardboard product

▶ ANIMAL BEDDING

- ❖ Wood chip or straw horse or animal bedding

▶ CLEAN SOILS

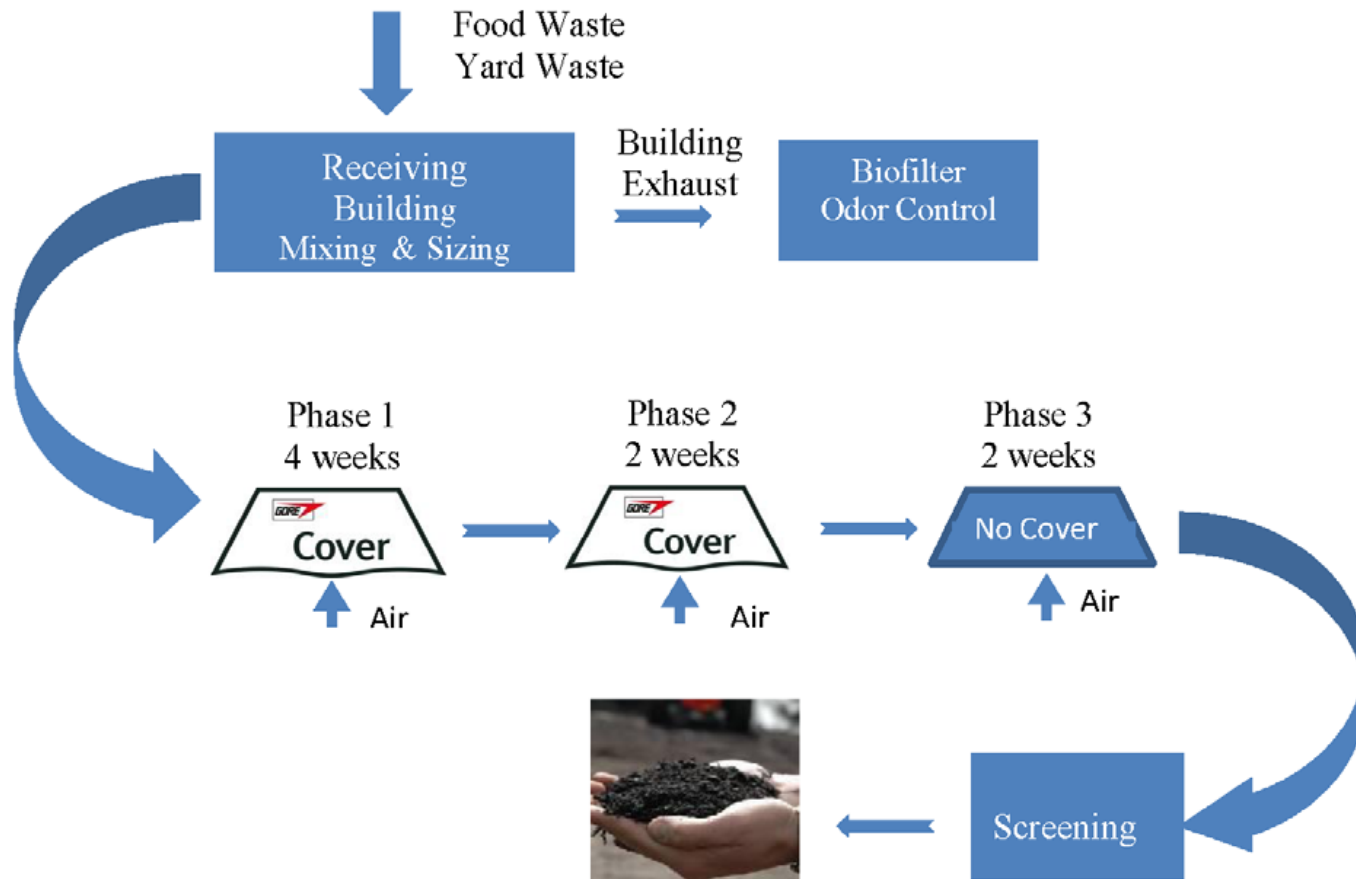
- ❖ Including... Potable Water Residuals from drinking water plants

▶ *NO METAL, GLASS, PLASTIC or other non biodegradables.*

Materials Processing

- ▶ **Inbound waste - 400 tons/day**
- ▶ **3-stage aerated Gore™- covered windrows with product screening – 100,000 tons/year**
- ▶ **Metal, glass, plastic, and other non-biodegradable materials will be screened from product**
- ▶ **Final product blending**

Compost Flow Diagram



Synergy with County Operations



- ▶ **Will provide capacity for emergency overflow**
- ▶ **Major increase in County landfill diversion**

Benefits to Region



- ▶ **Regional Facility**
 - ❖ **Serving Virginia, D.C. and Maryland**
- ▶ **Zero Waste Initiative**
 - ❖ **Recycle Organics**
 - ❖ **Greenhouse gas reduction**
- ▶ **Local Investment and Revenue**
 - ❖ **No taxpayer dollars required to construct or operate**
 - ❖ **No financial risk to Prince George's County**

► Employment and Training

- ❖ 12-15 permanent full time positions, plus 30-50 haulers, landscapers, distributors
- ❖ Local construction contractors and trades
- ❖ Visitor and Education Center
- ❖ Internships through Clozyergy
- ❖ Research and development – U of MD, BARC

Wilmington Organic Recycling Center



Weighing Inbound Organics



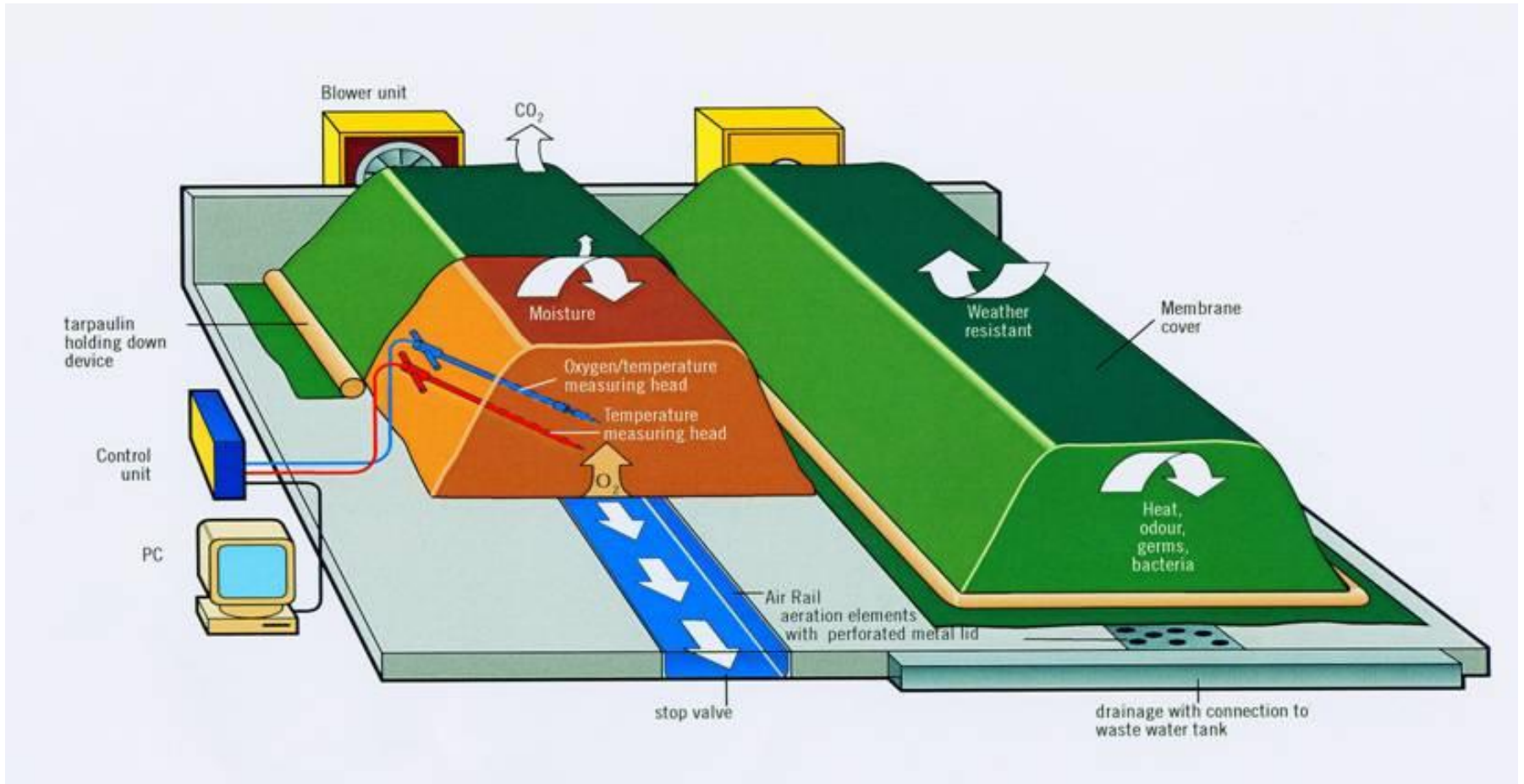
Blending, Sizing and Recipe Preparation



Biofilter Odor Control



GORE™ Cover System



Gore Cover



Aeration Blowers



Compost Screening



Finished Compost Product



Agriculture



Landscape



Horticulture



Additional Benefits from Compost



- ▶ **Special rates for participating counties and governments for:**
 - ❖ **Compost**
 - ❖ **Top soil**
 - ❖ **Bio Basin mix**
 - ❖ **Use on public parks, athletic fields and golf courses**

Conclusions



- ▶ **Recycling over 100,000 TPY of organic waste**
- ▶ **Reducing greenhouse gas**
- ▶ **Privately Financed**
- ▶ **Creating new local “green” jobs**
- ▶ **Operational by 2015**