

# Visualize 2045

**Request for Approval: Technical Inputs Solicitation: for LRTP 2022 Update, TIP and the Air Quality Conformity Analysis**

**Stacy Cook  
Principal Planner**

**Transportation Planning Board  
December 16, 2020**

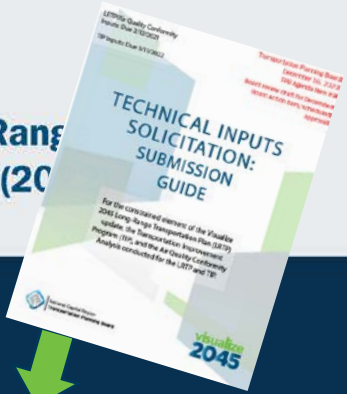
**Agenda Item #9**

**visualize  
2045** A long-range  
transportation plan  
for the National  
Capital Region



(Flickr/BeyondDC)

## TPB's Visualize 2045 Long-Range Transportation Plan Update (2020-2045)



**BEGIN  
PLAN**

**TECHNICAL  
AND POLICY  
WORK**

**TPB MEMBER  
TRANSPORTATION  
AGENCIES  
SUBMIT NEW  
PROJECTS**

**PLANNING, POLICY AND  
TECHNICAL ANALYSIS**

- Financial Constraint
- System Performance
- Air Quality Conformity
- Planning factors and emerging issues impacting transportation

**DEVELOP PLAN**

Prepare text and online materials

**2020**

**2021**

**2022**

**FINALIZE  
PLAN**

**PUBLIC  
PARTICIPATION**

**PUBLIC OUTREACH  
PHASE I**

Public opinion research

**PUBLIC COMMENT  
PERIOD**

Long-range transportation plan (LRTP) and air quality conformity inputs

**PUBLIC OUTREACH  
PHASE II**

Regional discussion on issues impacting transportation

**PUBLIC COMMENT  
PERIOD**

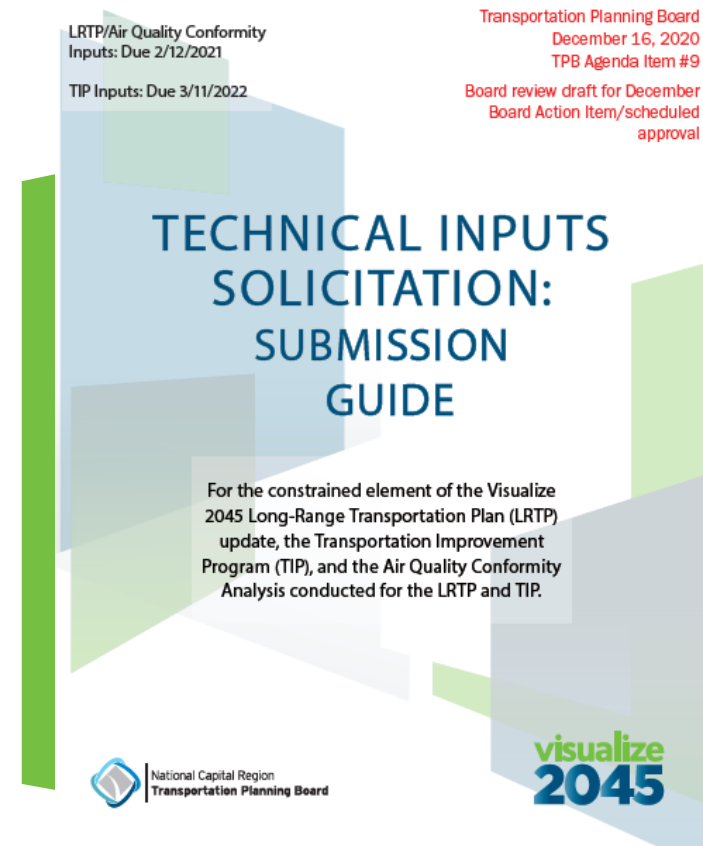
LRTP, transportation improvement program (TIP) and air quality conformity determination

**PLAN APPROVAL  
PROCESS**

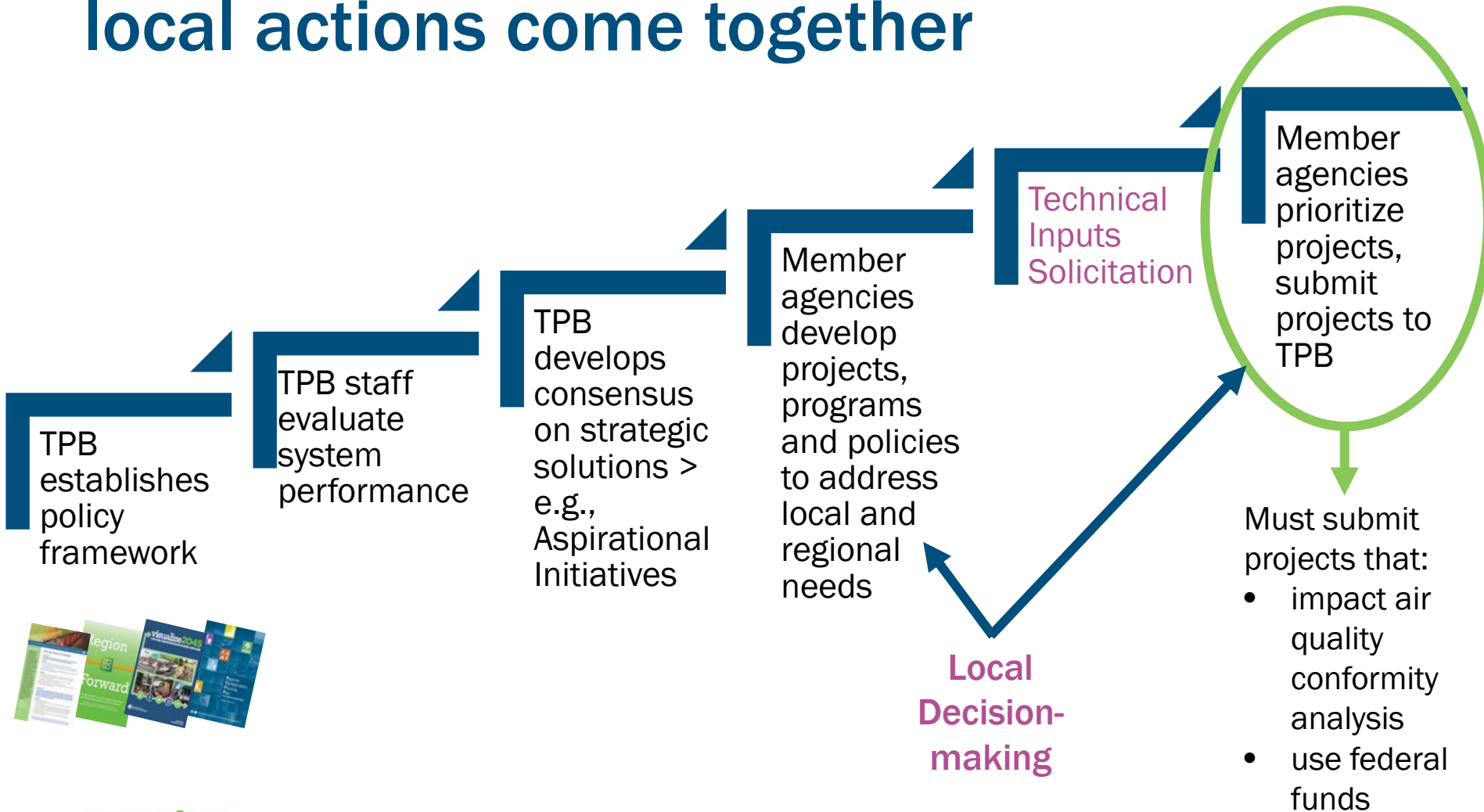
- April 2022: TPB review of Draft Plan
- May 2022: Board guidance on public comment response
- June 2022: Plan presented to TPB seeking approval
- Fall 2022: Anticipated federal approval

# Purpose of Technical Inputs Solicitation

- Provide transparency in process
- Provide instructions for project submission and updates to enable TPB to conduct required analyses
- Link TPB priorities and federal requirements to projects, programs, and policies submitted by member agencies



# The LRTP: where a regional vision and local actions come together



# Contents

- Introduction
- Requirements
- Project Inputs
- Plan and TIP Update Schedule
- Responsible Agencies
- Federal and Regional Policies
  - Regional Policy Framework and Priorities
  - Seven Transportation Initiatives for a Better Future
  - Shared Regional Goals and Priorities
  - Federal Requirements and Policy Considerations
  - Performance-Based Planning and Programming
- Basic Submission Instructions for Conformity Inputs
- Amendments to the LRTP and TIP
- Resources and Maps
- Detailed Appendix and form



Technical instructions



TPB  
Priorities



Technical instructions

# A Focus on TPB priorities

- Members that submit projects answer questions about if and how projects address TPB priorities:
  - A new emphasis on:
    - Aspirational Initiatives
    - Safety
    - Equity
    - Climate Change mitigation targets
      - **New question about promoting non-auto-travel**
- The MPO uses project information to communicate about what is in the plan to Board and public

# Summary of comments received and TPB response / corresponding activities

Comments include suggestions for:	x	TPB response/corresponding activities:
Planning and analysis that could inform the LRTP		New climate resilience strategy analysis – please see memorandum
Technical Inputs Solicitation: emphasis on Aspirational Initiatives and climate resiliency		Revisions that place additional emphasis on Aspirational Initiatives as policy priorities and climate resiliency
Performance measures and linkage to TPB’s Regional Transportation Priorities Plan		TPB has many performance measures that correspond to RTPP and has been developing additional performance measures

# Further emphasis on climate resiliency and Aspirational Initiatives

visualize  
2045



Regional and  
Federal Policies

## Regional Policy Framework and Priorities

The TPB's LRTP seeks to respond to both federal requirements and its own adopted set of policy goals and priorities. To a large extent, federal and regional goals intersect. The following pages summarize the federal requirements and the region's policy goals.

The TPB has worked continually to develop and adopt a set of consensus-based policy goals and priorities to inform local decision making on the types of projects, programs and policies it seeks for its LRTP and TIP. The [Vision](#), adopted in 1998, is the overarching policy document that describes regional goals and objectives as well as strategies to achieve them. This vision informed the 2014 [Regional Transportation Priorities Plan](#). The vision and goals focus on multimodal transportation solutions that give people greater choice in finding the travel

mode that works best for them. It emphasizes the important role of land-use, especially strengthening the region's Activity Centers by providing high-quality connections between centers and improving non-auto travel options within them. System maintenance is also paramount, recognizing that our existing roadways and transit systems must be in a state of good repair to be safe, efficient, and reliable.

## Climate Resiliency

In 2010, the TPB joined MWCOC's action to set greenhouse gas (GHG) reduction targets to mitigate the impact of climate change. Over the last decade the TPB completed two studies to evaluate strategies to address these targets, including the [What Would It Take](#) analysis and the [Multisector Working Group](#) study that identified the various types of projects, programs and policies that have the greatest potential to reduce GHG in the transportation sector.

In October 2020, the TPB endorsed new interim GHG reduction goals and new climate resiliency goals. These include a 2030 interim regional greenhouse gas reduction goal of 50% below 2005 levels by 2030; the region's climate resiliency goals of becoming a Climate Ready Region and making significant progress to be a Climate Resilient Region by 2030; and the need to incorporate equity principles and expand education on climate change into CEEPC, COG and TPB members' actions to reach the climate mitigation and resiliency goals.

## Equity

In 2020, the TPB established equity as its fundamental value and as an integral part of all its activities and decisions. TPB asks the member agencies explicitly consider the equity impacts of the projects, programs and policies that they sponsor and propose for inclusion in the TPB's LRTP.

## Strategies for our Future: Seven Aspirational Initiatives

In 2018, the TPB adopted seven transportation initiatives grounded in the TPB's Vision to advance the Regional Transportation Priorities Plan. TPB noted that these ideas, if funded and enacted, would have the potential to significantly improve the region's transportation system performance compared to current plans and programs. The realization of these initiatives would not only improve mobility, accessibility and air quality in the region it would also contribute to the region's greenhouse gas reduction and climate resiliency goals.

The seven Aspirational Initiatives are:

1. **Bring Jobs and Housing Closer Together** by having more housing and jobs in central locations to take advantage of underused Metro stations and reducing single occupant auto commute trips.
2. **Expand Bus Rapid Transit and Transitways** throughout the region to provide people not only more transit options but also a reliable and fast bus service for work and non-work trips.
3. **Move More People on Metrorail**, having restored it to an excellent state of good repair, provide more frequent services with longer trains and expanded stations that are accessible by non-motorized modes.
4. **Provide More Telecommuting and Other Options for Commuting** to take advantage of the many jobs suitable to telework and provide employees with transit and non-motorized travel benefits and disincentivize commute parking.

5. **Expand Express Highway Network** strategically, in an environmentally sensitive manner to create a network that connects much of the region, with express bus systems operating and where carpools and vanpools are exempt from tolls.
6. **Improve Walk and Bike Access to Transit**, as investments that remove barriers to walking and biking to transit stations not only help to reduce auto travel but also helps to fully utilize the investments already made in high capacity transit.
7. **Complete the National Capital Trail Network** to create an extensive network of trails that provides walk and bicycle access to jobs and other activities by connecting communities across the region to activity centers.

The project submission form seeks detailed project information that will help staff assess how the next set of projects in the LRTP and TIP address regional priorities and federal planning requirements.

Through this project technical input solicitation process the TPB urges its member agencies to prioritize investments on projects, programs and policies that support the regional planning priorities and advance the endorsed strategies as they submit their input for inclusion in the TPB's LRTP and TIP.

visualize  
2045



# Addressing Regional Transportation Priorities Plan Goals

**New:  
promoting  
non-auto  
travel in the  
region**



RTPP Goal	Questions
Provide a Comprehensive Range of Travel Options	<ul style="list-style-type: none"> <li>Does this project promote non-auto travel in the region? Identify all travel mode options that this project provides, enhances, supports or promotes</li> <li>Is this project physically in an Equity Emphasis Area (EEA)? How does it improve equity?</li> <li>Does this project improve accessibility for historically transportation-disadvantaged individuals (i.e., persons with disabilities, low incomes, and/or limited English proficiency)?</li> </ul>
Promote Regional Activity Centers	<ul style="list-style-type: none"> <li>Does this project begin or end in an Activity Center?</li> <li>Does this project connect two or more Activity Centers?</li> <li>Does this project promote non-auto travel within one or more Activity Centers?</li> <li>Does this project connect an Equity Emphasis Area to an Activity Center?</li> </ul>
Ensure System Maintenance, Preservation, and Safety	<ul style="list-style-type: none"> <li>Does this project contribute to enhanced system maintenance, preservation?</li> </ul>
Maximize Operational Effectiveness and Safety	<ul style="list-style-type: none"> <li>Is this project primarily designed to reduce travel time on highways and/or transit without building new capacity (e.g., ITS, bus priority treatments, etc.)?</li> <li>Is this project expected to significantly reduce fatalities or injuries among motorists, transit users, pedestrians, and/or bicyclists?</li> </ul>
Protect and Enhance the Natural Environment	<ul style="list-style-type: none"> <li>Is this project expected to contribute to reductions in emissions of criteria pollutants, specifically, to attainment of ozone levels consistent with the National Ambient Air Quality Standard (NAAQS)?</li> <li>Is this project expected to contribute to meeting the regional goal of reducing greenhouse gasses by 50% below 2005 levels by 2030?</li> </ul>
Support Interregional and International Travel and Commerce	<ul style="list-style-type: none"> <li>Does this project enhance, support, or promote the following freight carrier modes: long-haul truck, local delivery, rail, or air freight carrier modes?</li> <li>Does this project enhance, support, or promote the following passenger carrier modes: air, Amtrak intercity passenger rail, intercity bus?</li> </ul>

*New equity questions*



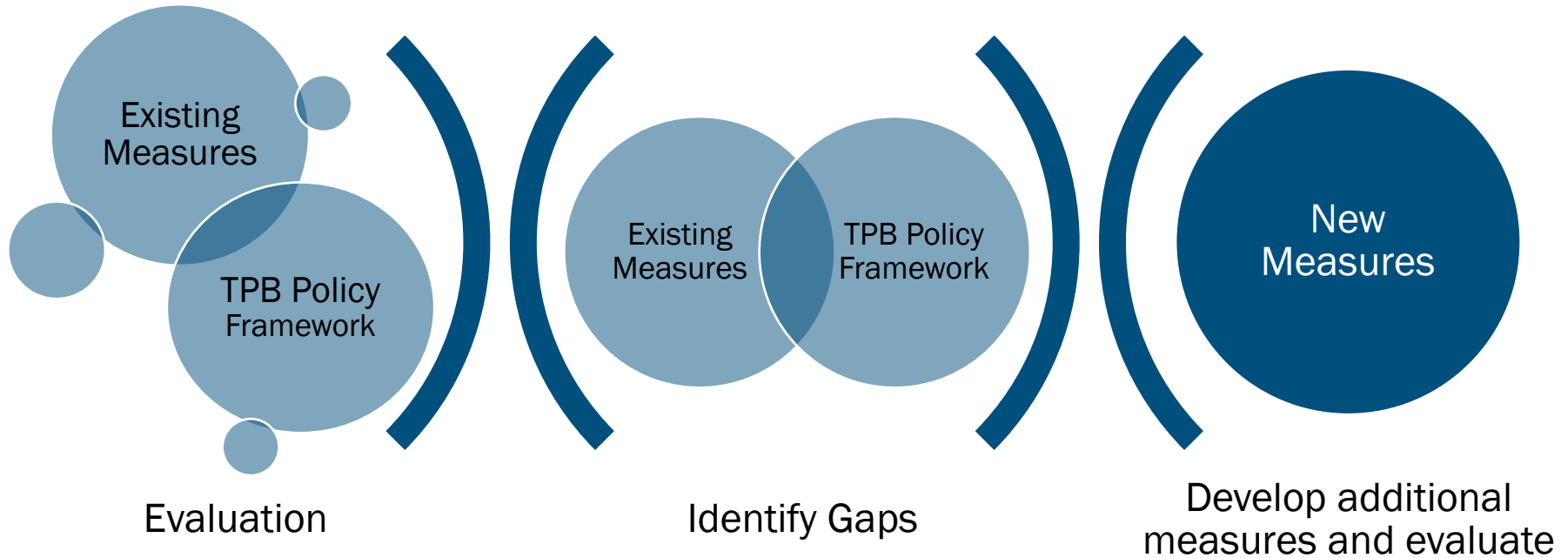
*Updated safety question*



*Updated climate questions*



# New LRTP Performance Measures



# Board - Proposed Change A

Page 13:

- Current text:
  - In October 2020, the TPB endorsed new interim GHG reduction goals and new climate resiliency goals. These include a 2030 interim regional greenhouse gas reduction goal of 50% below 2005 levels by 2030; the region's climate resilience goals of becoming a Climate Ready Region and making significant progress to be a Climate Resilient Region by 2030; and the need to incorporate equity principles and expand education on climate change into CEEPC, COG and TPB members' actions to reach the climate mitigation and resiliency goals.
- Add:
  - **This will require reduction in vehicle miles traveled and associated emissions in Visualize 2045.**

# Board - Proposed Change B

Page 14: Text box::

- Through this project technical input solicitation process the TPB **urges** its member agencies to prioritize investments on projects, programs and policies that support the regional planning priorities and advance the endorsed strategies as they submit their input for inclusion in the TPB's LRTP and TIP.

**Replace** box text with:

- Through this project technical input solicitation process the TPB **requires** its member agencies to prioritize investments on projects, programs, and policies **to reduce greenhouse gas emissions, prioritize the aspirational strategies, and achieve COG's land use and equity goals** as they submit their input for inclusion in the TPB's LRTP and TIP.

# Board - Proposed Change C

Page 17: **Add** note that:

- Additional performance measures beyond minimum federal requirements will be considered and developed for this CLRP to monitor progress in achieving regional priorities such as equity, greenhouse gas reductions, access to jobs and services, access to transit, vehicle miles traveled, and non-auto mode share.

If included, staff recommended revision:

- **TPB will continue to report and will add to existing** performance measures beyond minimum federal requirements will be considered and developed for this CLRP to monitor progress in achieving regional priorities such as equity, greenhouse gas reductions, access to jobs and services, access to transit, vehicle miles traveled, and non-auto mode share.

# Board - Proposed Change D

Form Question #34. Operations

- **Revise** title as Operations **and Travel Demand**
- **Add** question:
  - **Does this project reduce automobile Vehicle Miles Traveled?**

Staff recommendation: the current TIS updates now includes the question, under the RTPP goals, “does this promote non-auto travel’ this question could be revised to include VMT:

- Does this project promote non-auto travel **or can it be expected to reduce VMT?**

*(Staff believe the referenced is question 37):*

- *Current Question 37: Does this project reduce travel time on highways and/or transit without building new capacity, (e.g., ITS, bus priority treatments, etc.)?*

# Board - Proposed Change E

## Form Question #41. Additional Written Information on Aspirational Initiatives

- Clarify that additional written information is required specifically for Aspirational Initiatives by separating this into two narrative questions:
  - #41a. “Please provide additional written information that describes how this project further supports or advances the TPB Aspirational Initiatives” - please note that this requires a database change -
  - #41b. Please provide additional written information that describes how this project further supports or advances other regional goals or needs

# Board - Proposed Change F

## Form Question #43. Environmental Mitigations

- Add question regarding mitigation of climate impacts:
  - #43b If the answer to question #37 regarding contributing to greenhouse gas emission reductions was 'No', please describe how the project will mitigate increased greenhouse gas emissions or vehicle miles traveled.

*TPB Staff note: we believe the referenced question is #40: Is this project expected to contribute to reductions in emissions of greenhouse gases by 50% below 2005 levels by 2030?*



# TPB Members' role:

- **Today:** Board will be asked to discuss and approve final revisions to the Technical Inputs Solicitation
- **Ongoing:** Continue to prioritize and fund plans, programs and policies that implement the Aspirational Initiatives and that address other regional policy priorities



Flickr/BeyondDC

## Stacy M. Cook

Principal Planner

(202) 962-3335

scook@mwkog.org

[mwkog.org/TPB](http://mwkog.org/TPB)

Metropolitan Washington  
Council of Governments

777 North Capitol Street NE,  
Suite 300

Washington, DC 20002