



Metropolitan Washington Council of Governments Annual Winter Weather Briefing



Washington Metropolitan Area Transit Authority

November 1, 2018



Severe Weather Plan

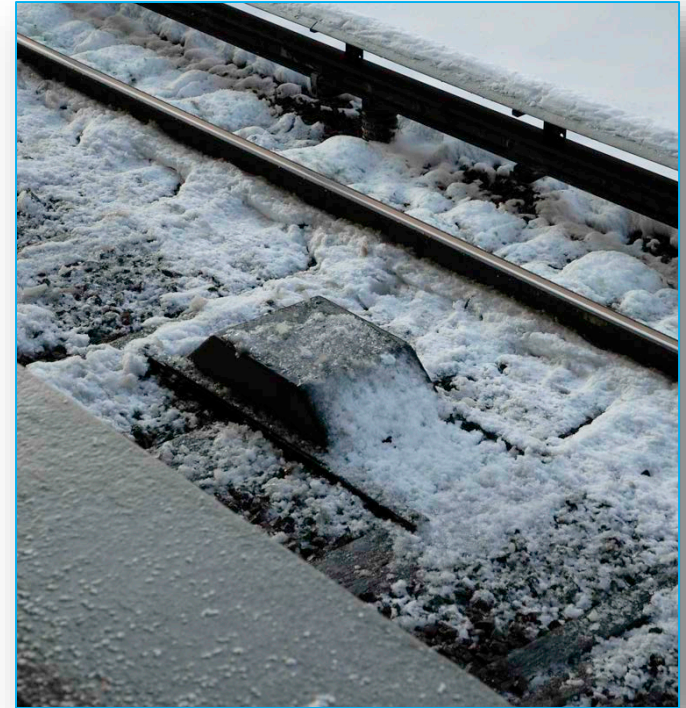
- **Winter Storms Season**
 - Snow
 - Ice
- **Tropical Storms Season**
 - Hurricanes
 - Winds
 - Flooding
 - Severe Thunderstorms
- **Heat Season**
 - Rail Kinks
 - Air Quality
- **Severe Storms**
 - Power Outages
 - Flooding





Severe Weather Teams

- **Severe Weather Commanders**
 - Joseph Leader
 - Metrorail: **Laura Mason**
 - Metrobus: Bob Potts
- **Director of the Office of Emergency Management**
 - Ron Bodmer
 - OEM Liaisons
- **Emergency Operations Center Teams**
 - Representatives from different departments
 - Red Team is a standing day shift
 - Blue Team is a standing night shift

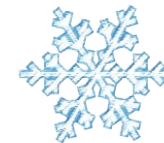




Severe Weather Notifications



- **Office of Emergency Management Liaison**
 - Tracks weather 24 hours a day, 365 days a year
 - Notifies Weather Teams concerning decisions related to the weather conditions and the activation of the Emergency Operations Center (EOC)
 - Represents WMATA on the MATOC Severe Weather Coordination Working Group





Severe Weather Phases



- **Alert**
 - Monitor weather forecasts, issue weather advisories
- **Readiness**
 - Mobilization of resources to include deployment to pre-designated locations
- **Operations**
 - Activities required to respond to weather condition
- **Recovery**
 - Provide and restore regular service to Metrorail, Metrobus and MetroAccess

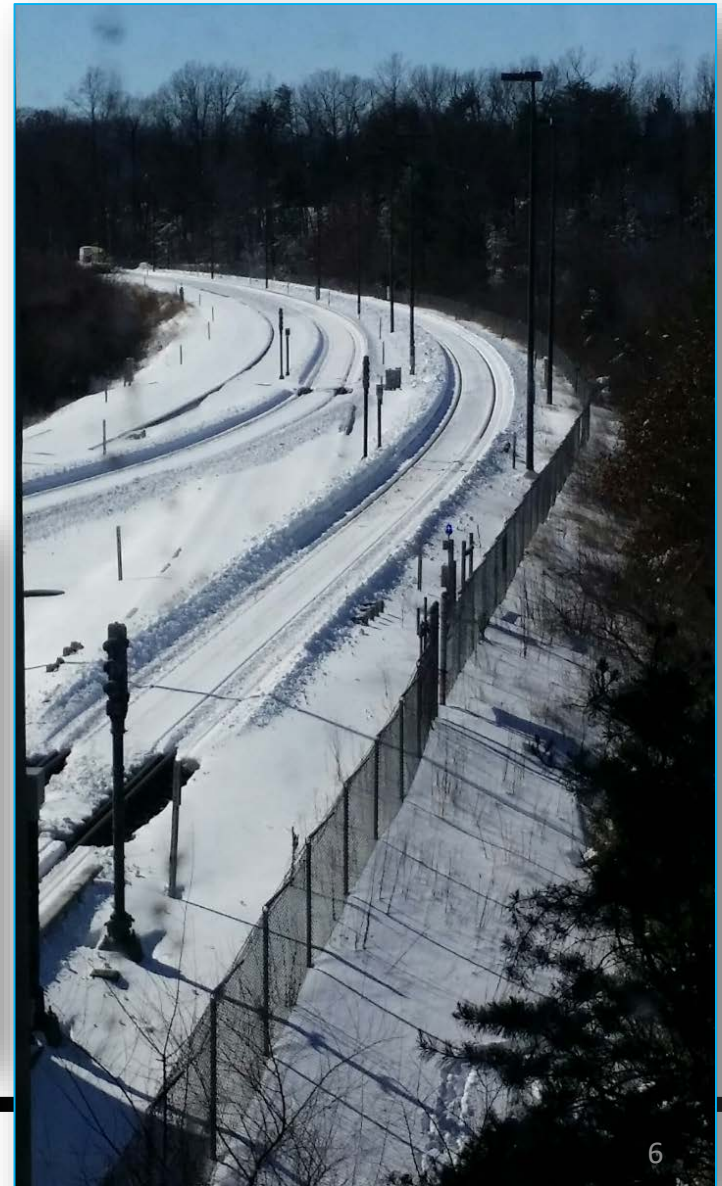




Winter Weather Readiness/Operations

- **Levels**

- Level 1 (0-2")
- Level 2 (2-4")
- Level 3 (4-8")
- Level 4 (8+")

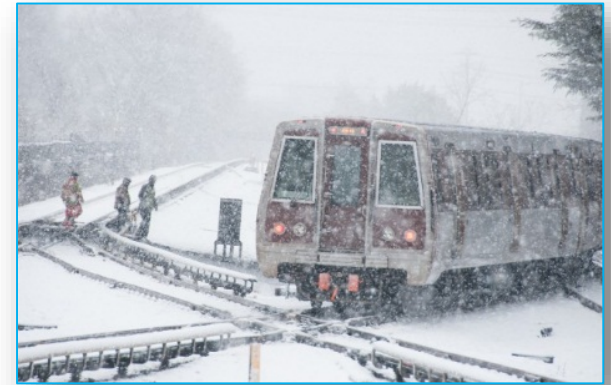




Level 1



- **Weather Conditions**
 - 0” to 2” of snow or light collection of snow on surfaces



Metrorail Service

Normal service schedule.

Metrobus Service

Normal schedule operating as roads and traffic permits.

MetroAccess Service

Normal schedule operating as roads and traffic permits.





Level 2



- **Weather Conditions**
 - 2” to 4” of snow

Metrorail Service

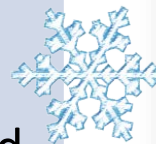
Adjusted service schedule with longer headways.

Metrobus Service

Service suspended on many routes. Operating routes on snow detours.

MetroAccess Service

Normal schedule operating as roads and traffic permit. Outbound trips may be curtailed.





Level 3



- **Weather Conditions**
 - 4” to 8” of snow



Metrorail Service

Limited service schedule with longer headways.

Metrobus Service

Service suspended on all but the busiest routes. Operating routes on snow detours.

MetroAccess Service

Non-essential trips are canceled.





Level 4



- **Weather Conditions**
 - 8+” of snow

Metrorail Service

No service or limited underground service.

Metrobus Service

Provide at least one hour notice before service suspension.

MetroAccess Service

Suspension of service.





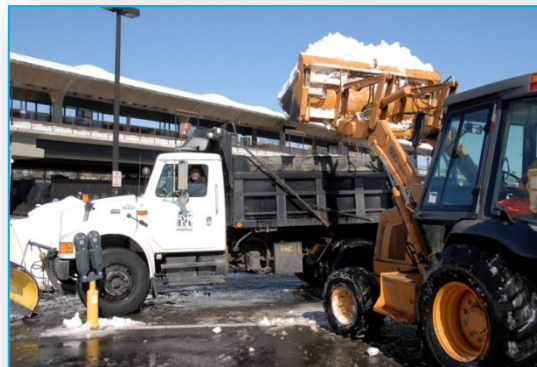
Recovery



- **3 phases**

As tracks and roads are cleared, Metro will reestablished service based on improved surface conditions

1. **Short-Term:** < 12 hours
2. **Intermediate:** 12-72 hours
3. **Long-Term:** > 72 hours





Snow Blowers





Dedicated De-Icers





Questions

