



# Freight & Real Estate Development

---

TRANSPORTATION PLANNING BOARD  
FREIGHT SUBCOMMITTEE

JULY 9, 2015

# Agenda

- › Introduction
- › JBG Overview
- › Property Map
- › Freight/Loading Considerations During Design
- › Freight/Loading Considerations During Construction
- › Questions?

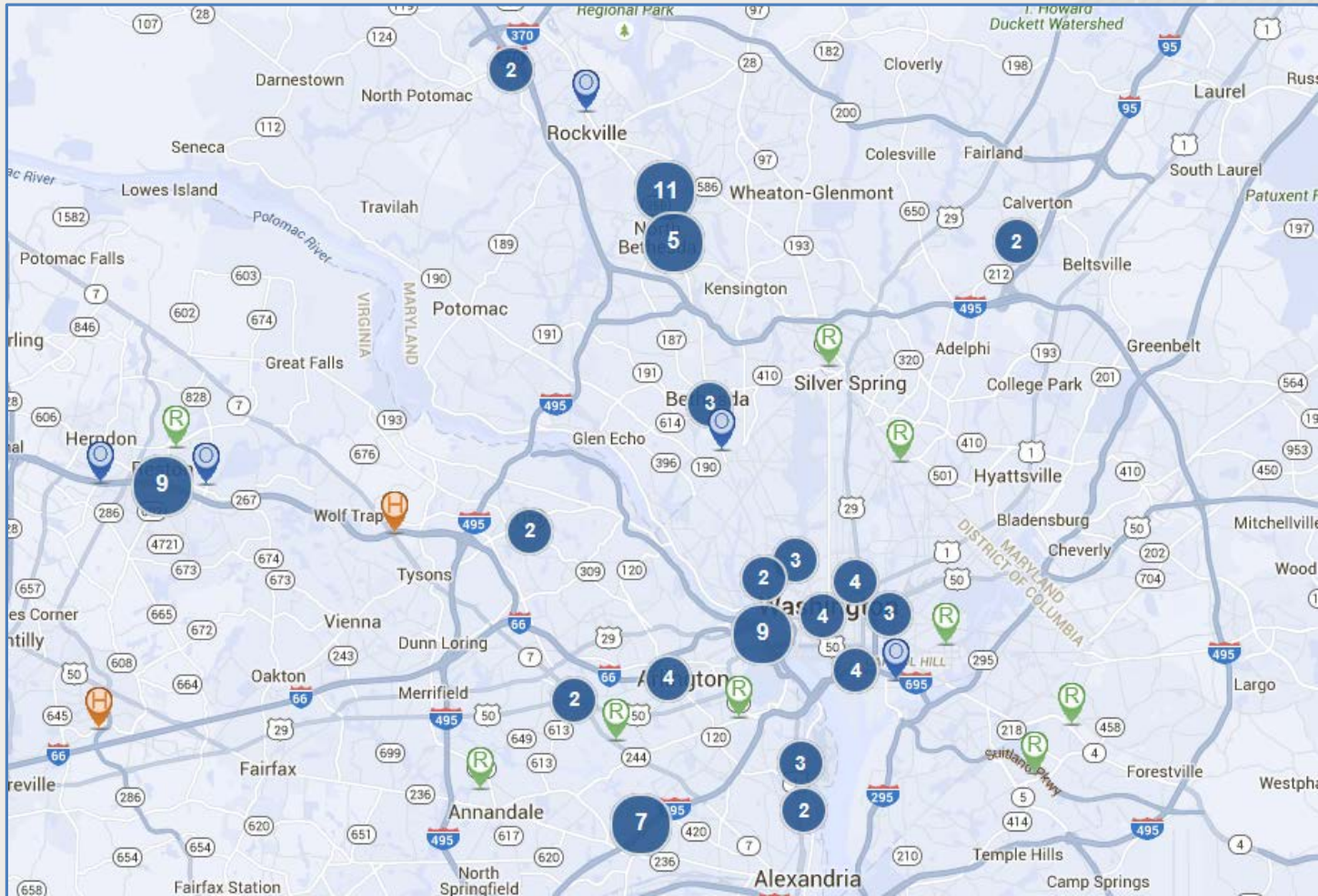
# Introduction

Emily Garofalo  
Associate, Development  
[egarofalo@jbg.com](mailto:egarofalo@jbg.com)

# JBG Overview

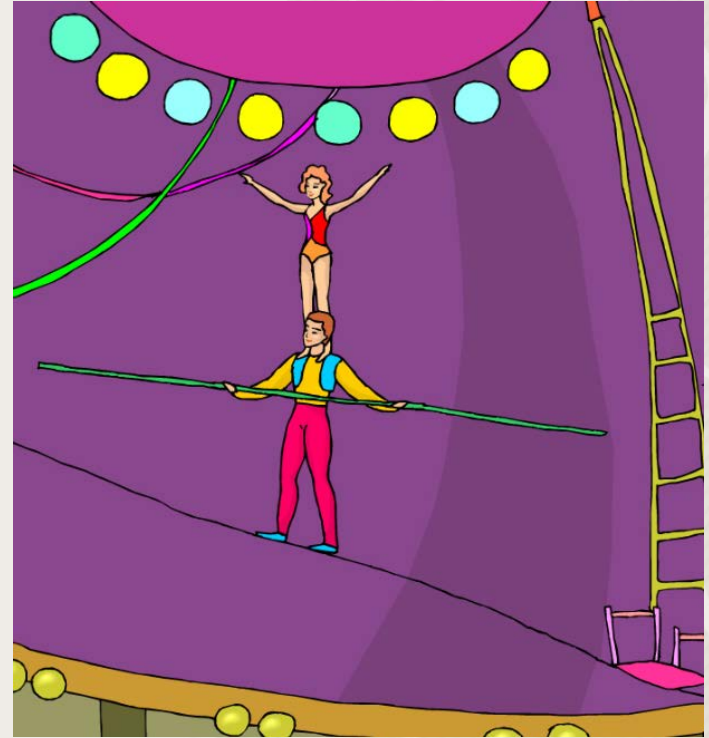
- › Founded in 1960
- › Investor, owner, developer and manager of real estate properties
- › Invest almost exclusively in urban-infill, transit-oriented developments in the Washington Metropolitan Area
- › Invest and develop a diverse amount of product types including office, residential, hotel and retail

# Property Map



# Freight/Loading Considerations During Design

- › Product type
- › Jurisdictional requirements
- › Community impact
- › Site Access
- › Space Planning



# Freight/Loading Considerations During Construction

- › Site location
- › Jurisdictional requirements
- › Community impact
- › Construction type
- › Project duration



Thank you for your time!

Any questions?