

# THE NATIONAL CAPITAL TRAIL INITIATIVE

---

## Of the TPB's 2018 Long-Range Transportation Plan *Visualize 2045*

Michael Farrell  
Transportation Planner

Bicycle and Pedestrian Subcommittee  
Item #5  
January 21, 2020



National Capital Region  
Transportation Planning Board

# 2018 Long-Range Plan

**UNFUNDED  
ELEMENT**

**ASPIRATIONAL  
ELEMENT**

**CONSTRAINED  
ELEMENT**

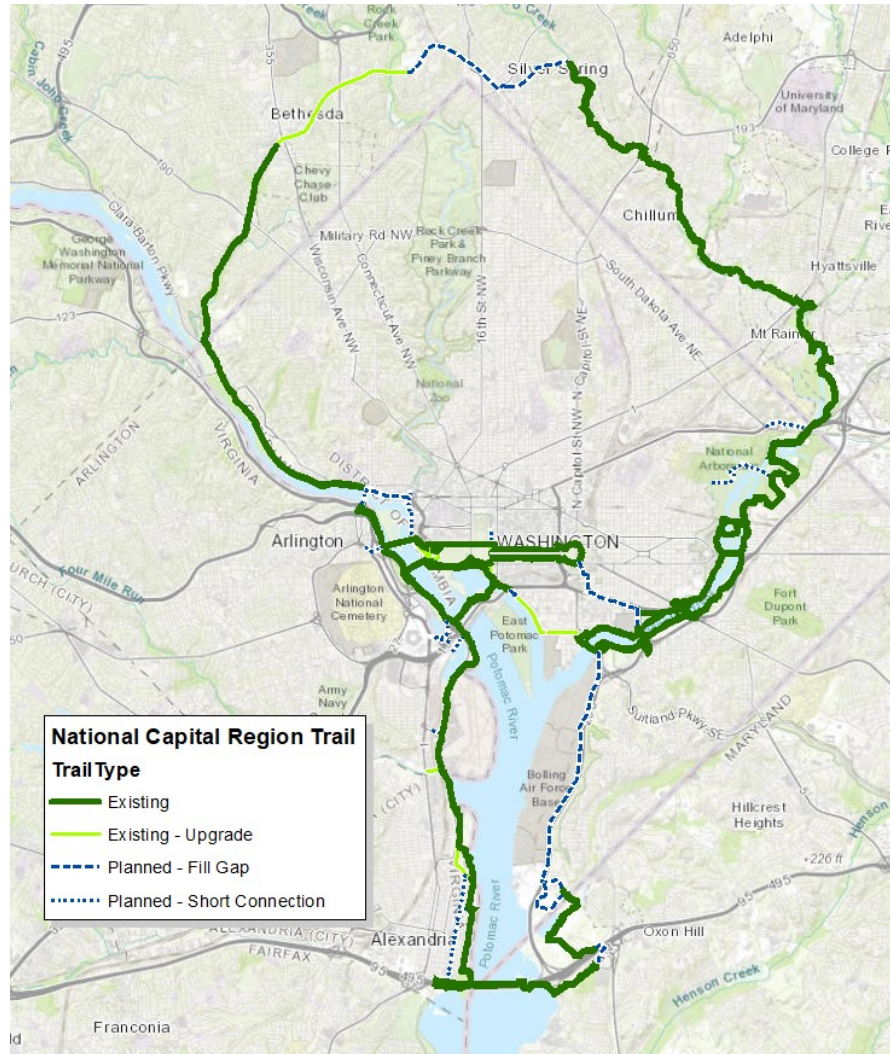
## visualize2045 A LONG-RANGE TRANSPORTATION PLAN FOR THE NATIONAL CAPITAL REGION



 National Capital Region  
Transportation Planning Board

**APPROVED  
OCTOBER 17, 2018**

# National Capital Trail



- 60 total miles total
- 21 miles unconstructed
- 3 miles need upgrading

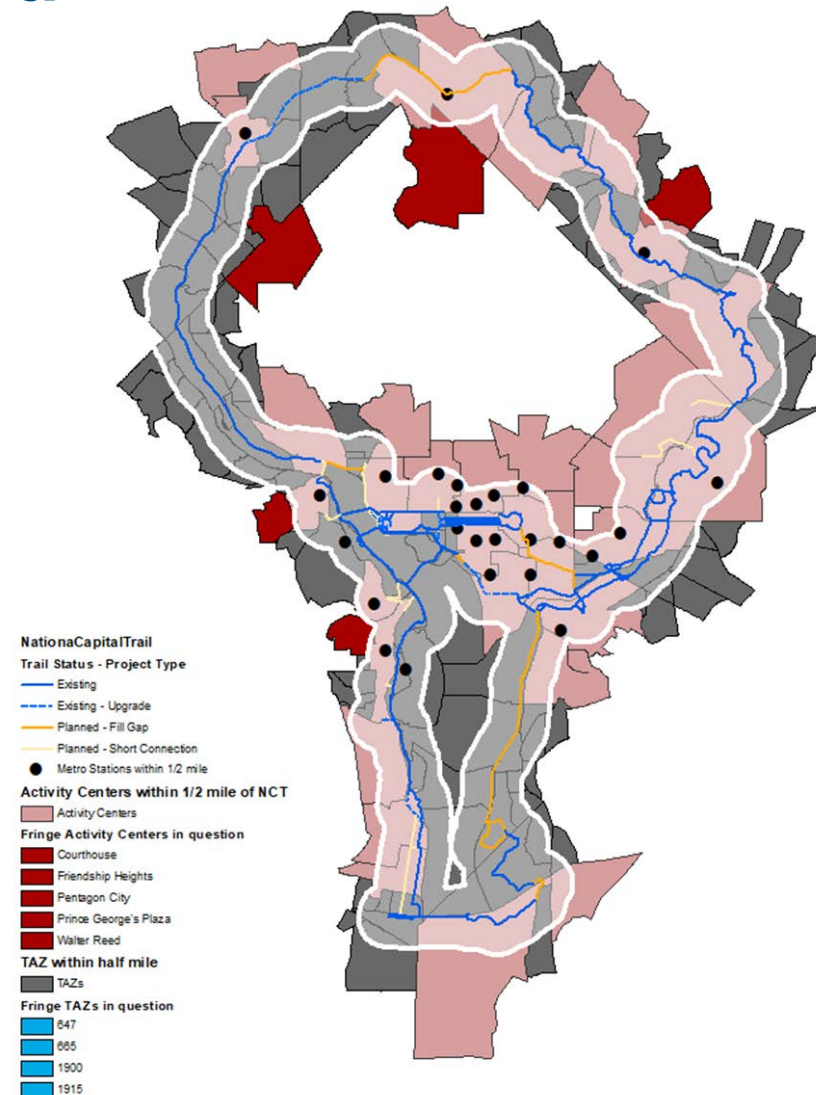


# People and Jobs Served

Within 1/2 mile of the National Capital Trail:

- 36 Activity Centers
- 26 Metro Station
- 817,983 jobs
- 498,161 people

	Activity Centers	Metro Stations	Employment	Population
1/2-mile Buffer	36	26	817983	498161
2-mile Buffer	57	58	1254344	1365260



# TPB calls for Expansion

---

- In Fall 2018, TPB Bicycle and Pedestrian Subcommittee recommended that the National Capital Trail be expanded to cover the entire TPB footprint
- Capital Trails Coalition urged the TPB to incorporate its newly adopted Capital Trails Network into Visualize 2045
- In December 2018, TPB adopted Resolution TPB R20-2019, which directed TPB staff to:

“Expand the TPB-endorsed National Capital Trail to provide connectivity to other major trails in the region thereby creating a regional trail network that extends into all TPB member jurisdictions, by building on **previous work done by TPB and others**, and to report on progress by end of June 2019...”

# Building on Previous Work

- TPB staff participated in four years of planning and consensus-building with the Capital Trails Coalition
- REI-funded 1.5 full time equivalent staff, housed at Washington Area Bicyclist Association and at Rails to Trails
- Vision: A continuous network of “all-ages, all-abilities” long distance multi-use trails, covering the entire region, connecting people to jobs, transit, and nature.



# Capital Trails Coalition Network



# Selection Criteria

- Long-distance, regional trail network
  - Many local trails will not be included
- Accessible for “**All Ages and Abilities**”
- Off-Street Multi-Use Paths:
  - 10'+ wide for new construction.
  - 8' minimum for existing facilities
  - Narrower in short segments if design constrains
  - Paved, or firm surface such as crushed limestone
- On-street:
  - Protected from moving traffic (i.e. parked cars, curb, flexposts)
  - Short unprotected connections where necessary
- Designed for non-motorized use
- Connectivity
  - Directly connected to the regional network
  - Suitable for both transportation and recreation
- Existing or Planned Facilities are acceptable
  - Planned facilities must be in an approved plan



Virginia Avenue SE





# Progress to Date

---

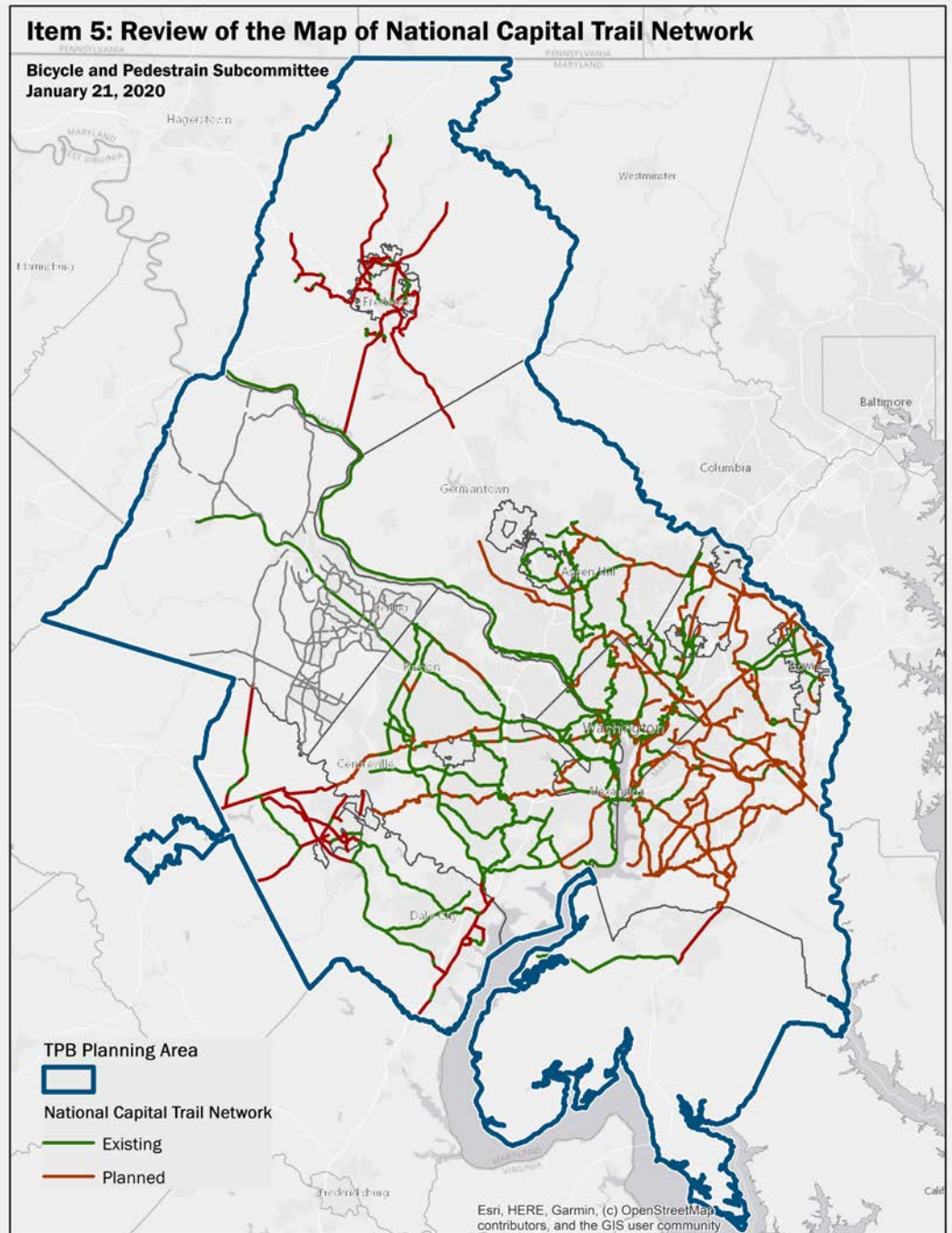
- Coordination/Planning
  - B/P Subcommittee
    - Endorsed Capital Trails Coalition Network – March 19
    - Endorsed Criteria for Network Inclusion – May 21
  - Site Visits
    - Capital Trails Coalition – March 8
    - Frederick County/City – April 30
    - Prince William/Manassas/Manassas Park – May 2
    - Loudoun – May 13
    - Charles – Met at COG, June 7
- Data Gathering/Mapping
  - GIS data gathered from all the major jurisdictions
  - Metadata to verify eligibility
    - Width, paved
    - Facility Name is helpful
  - Vetted for eligibility/density



# National Capital Trail Network



National Capital Region  
Transportation Planning Board



# Action Requested: Endorse the Network!

---

- Endorse the Network - Today
- Present to TPB Technical Committee – February 7
- TPB Adopts Network – March
- Follow-on Efforts:
  - Annual updates of the Network
    - Coordinate with Capital Trails Coalition
  - Update the regional Bicycle and Pedestrian Plan – Spring 2020



## Michael Farrell

Transportation Planner

(202) 962-3760

[mfarrell@mwkog.org](mailto:mfarrell@mwkog.org)

[mwkog.org/tpb](http://mwkog.org/tpb)

---

Metropolitan Washington Council of Governments

777 North Capitol Street NE, Suite 300

Washington, DC 20002



National Capital Region  
Transportation Planning Board