

PERFORMANCE BASED PLANNING & PROGRAMMING

2022-2025 Targets:

- Highway Assets (Pavement & Bridge Condition)
- Highway System Performance: Travel Time Reliability

Eric Randall, TPB Transportation Engineer

Transportation Planning Board
October 19, 2022



Contents of Presentation

- Highway Asset Four-year Targets
- Data Visualization: Bridge Condition
- Highway System Performance: Travel Time Reliability Four-year Targets
- Resolution



Performance Based Planning and Programming

As briefed at September meeting:

- Federal surface transportation regulations require the implementation of performance based planning and programming (PBPP) by State DOTs, MPOs, and transit agencies
- State DOTs, MPOs, and providers of public transportation must adopt targets in the each of the required performance areas and link investment priorities to the achievement of performance targets in the TIP and the LRTP
- Next round of 4-year targets for the two areas of Highway Assets and Highway Systems Performance for the period 2022-2025 are due for adoption



Highway Asset **DRAFT** 2022-2025 Targets for the NCR

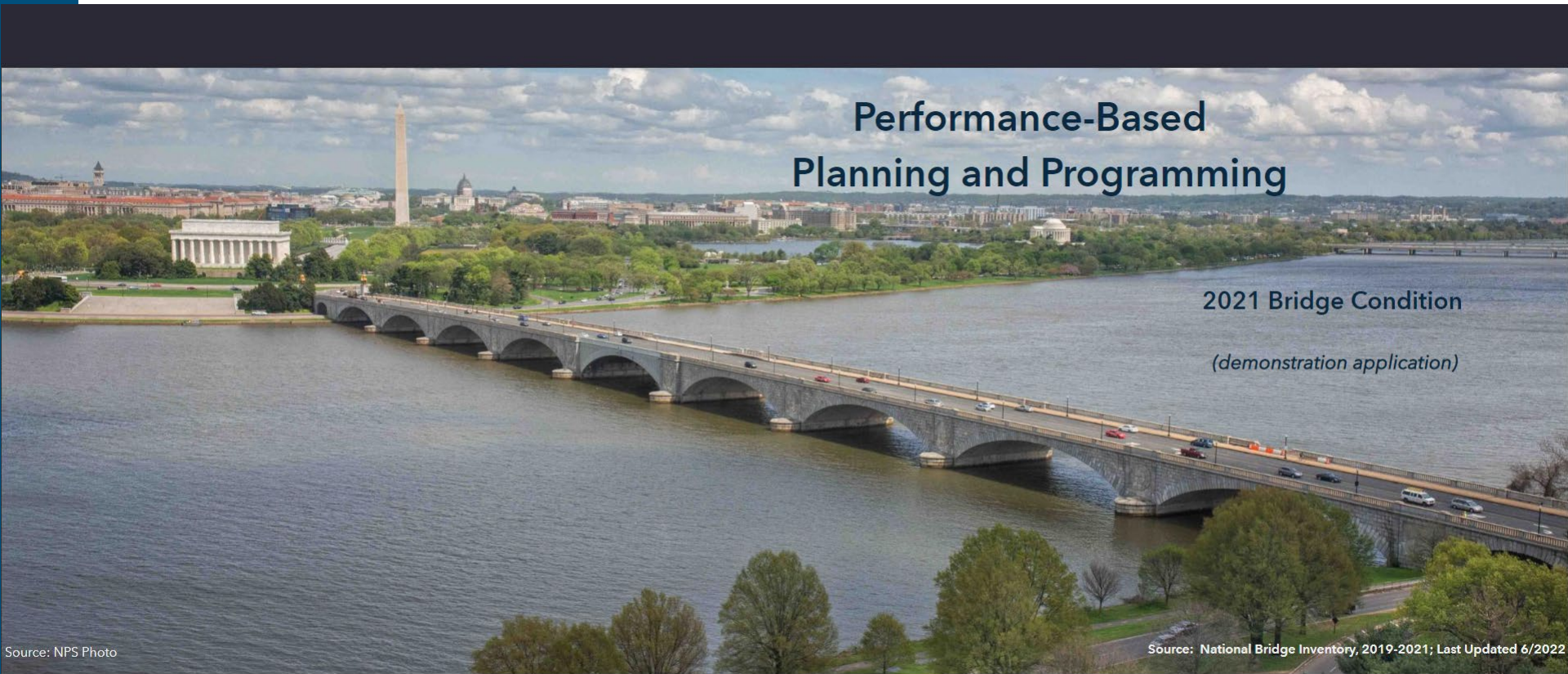
| Interstate Pavement | 2022 - 2025 Four Year Target |
|---|------------------------------|
| (1) Percentage of pavements on the Interstate System in Good condition | 44.8% |
| (2) Percentage of pavements on the Interstate System in Poor condition | 1.6% |
| NHS (Non-Interstate) Pavement | |
| (3) Percentage of pavements on the NHS (excl. Interstate) in Good condition | 26.3% |
| (4) Percentage of pavements on the NHS (excl. Interstate) in Poor condition | 7.3% |
| Bridges | |
| (5) Percentage of NHS Bridges Classified as in Good Condition | 25.7% |
| (6) Percentage of NHS Bridges Classified as in Poor Condition | 4.2% |



Data Visualization: Bridge Condition

https://gis.mwcog.org/webmaps/tpb/pbpp/highway_assets/

- Note: webmap still in development



Source: NPS Photo

Source: National Bridge Inventory, 2019-2021; Last Updated 6/2022

Next

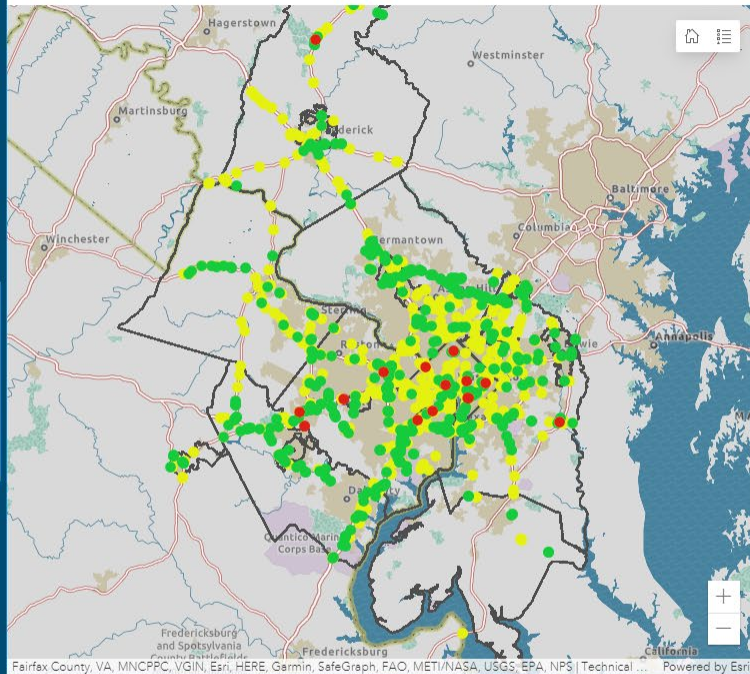
Data Visualization: Bridge Condition (2)

Performance Based Planning & Programming: Bridge Condition
2021 National Bridge Inventory

State
None

Jurisdiction
Selection required

2021 Bridges on the National Highway System



NHS Bridge Conditions by State

Selection required on one or more elements

State **Jurisdiction**

NHS Bridge Ownership by State

Selection required on one or more elements

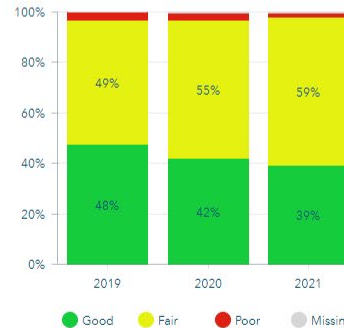
State **Jurisdiction**

Structurally Deficient NHS Bridges by State

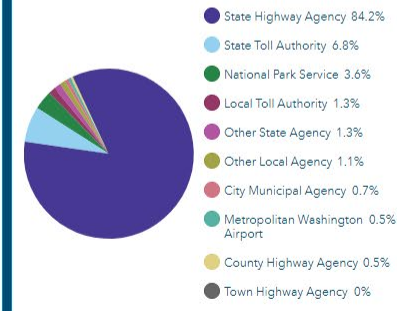
Selection required on one or more elements

State **Jurisdiction**

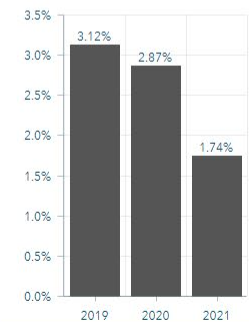
Regional NHS Bridge Conditions



Regional NHS Bridge Ownership



Regional Structurally Deficient NHS Bridges



| Good | Fair | Poor | Total Bridges |
|------------|------------|-----------|---------------|
| 584 | 849 | 15 | 1,448 |

Cover

Intro

Dashboard

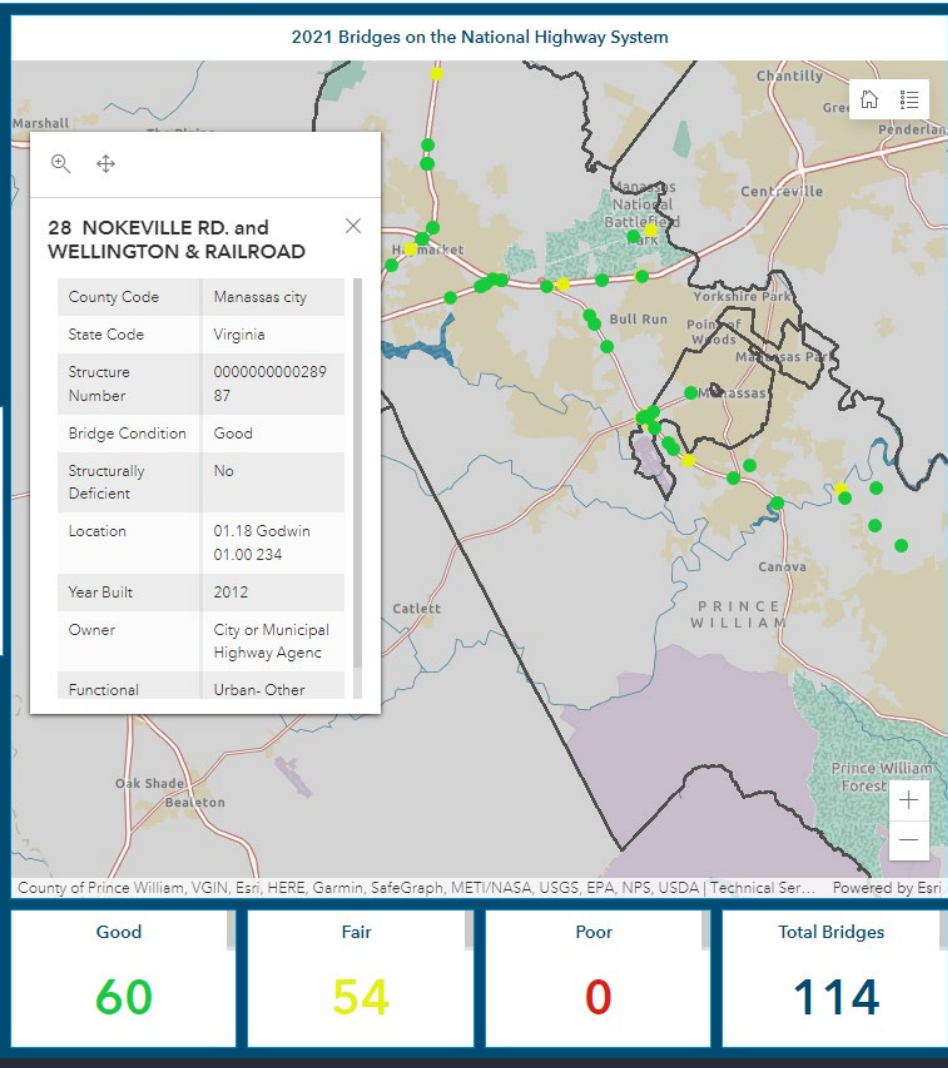
End



National Capital Region
Transportation Planning Board

Data Visualization: Bridge Condition (3)

Performance Based Planning & Programming: Bridge Condition
2021 National Bridge Inventory

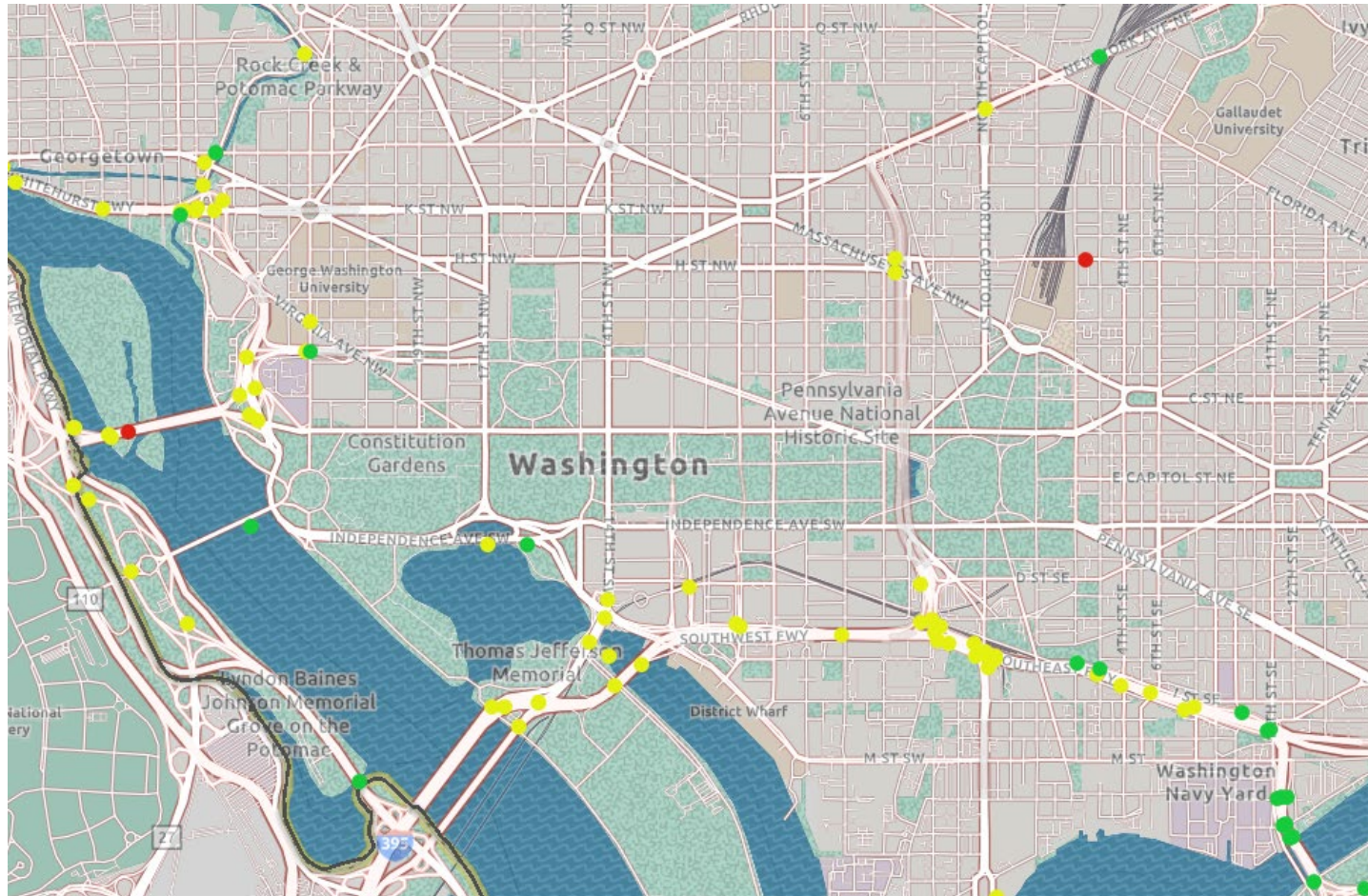


- Can also select state or jurisdiction for specific detail
 - Example: Prince William County and the City of Manassas
- Select specific bridge for more detail



Data Visualization: Bridge Condition (4)

- Can expand map for larger view
 - Example: two 'Poor' bridges: TR Bridge and H Street Bridge



Highway System Performance: Travel Time Reliability Targets



Highway System Performance: Travel Time Reliability

DRAFT 2022-2025 Targets for the NCR

| Highway System Performance: Travel Time Reliability for the NCR | 2022 – 2025 Four Year Target |
|---|------------------------------|
| Travel Time Reliability (TTR) – Interstate | 61.1% |
| Travel Time Reliability (TTR) – Non-Interstate NHS | 78.6% |
| Truck Travel Time Reliability (TTTR) Index | 2.56 |



Resolution R3-2023

TPB staff request approval of Resolution R3-2023

- To adopt targets for Highway Assets and Highway System Performance Travel Time Reliability performance measures for the period 2022-2025 for the National Capital Region metropolitan planning area



Eric Randall

TPB Engineer

(202) 962-3254

erandall@mwkog.org

mwkog.org/tpb

Metropolitan Washington Council of Governments

777 North Capitol Street NE, Suite 300

Washington, DC 20002



National Capital Region
Transportation Planning Board