

2022 Visualize 2045 Update

Performance Analysis Update

Sergio Ritacco
Transportation Planner

TPB Technical Committee
Agenda Item 10
March 6, 2020

visualize2045
A LONG-RANGE TRANSPORTATION PLAN FOR THE NATIONAL CAPITAL REGION



Performance Analysis Update

- What
- Why
- Steps and schedule
- What TPB has heard in the past
- Opportunity for TPB Technical Committee input



Performance Analysis Update

- What:
 - Review existing measures used to evaluate system performance
 - Identify and develop methodologies for a new set of performance measures that will be used to conduct the performance analysis for the financially constrained element of the 2022 long-range plan (LRP)



Performance Analysis Update

- Why:
 - TPB uses a lot of performance measures, from those federally mandated to other measures that TPB finds valuable in communicating about the transportation system
 - Some of the priorities in the TPB policy framework are underrepresented in what we measure (in part, as some priorities lend themselves to measures better than others)
 - Opportunity to address increasingly important topics relevant to the region's transportation system



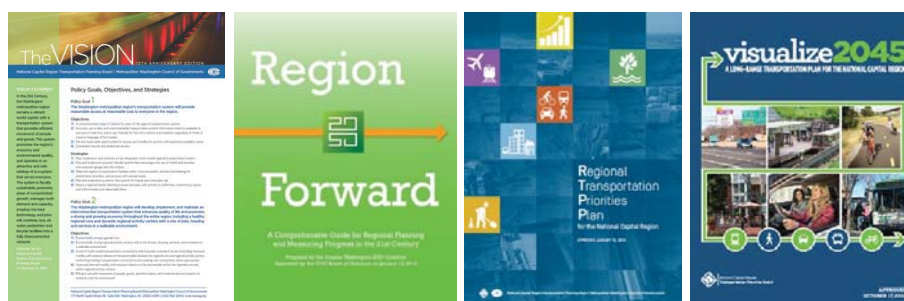
Steps and Schedule

Step	Schedule
Review existing measures and develop criteria for measure selection	March 2020
Identify potential measures	April 2020
Select measures and develop methodologies	May-June 2020
TPB staff tests the new measures	July-September 2020
Conduct performance analysis for the 2022 Visualize 2045 update	Summer 2022



Steps and Schedule

- **Step 1:** Review existing measures used to evaluate system performance against the TPB policy framework and identify opportunity for enhancement.



Steps and Schedule

- **Step 2:** Develop criteria for measure selection
 - Level of complexity to calculate/tools required.
 - The measures should follow best practices for performance management. (e.g., data availability and consistency)
 - The consultant to work with staff to define other criteria.



Steps and Schedule

- **Step 3:** Identify potential measures, select measures, and develop methodologies for a new set of performance measures used to conduct performance analysis for the financially constrained element of the 2022 update
 - Measures should be developed for the region, and for equity emphasis areas
 - Performance measures may be both quantitative and qualitative, but the majority of measures should be quantitative



Steps and Schedule

- Outcomes and Application
 - The new performance measures will be ‘tested’ by TPB staff against the financially constrained element of the 2018 long-range plan (Visualize 2045)
 - The updated set of performance measures will be used for the system performance analysis for the 2022 Visualize 2045 update



Previous Tech Feedback

- 2015 CLRP, 2016 CLRP, & Visualize 2045:
 - Measures can be difficult to understand without context or points of comparison
 - More explicitly consider the impact of TNCs, teleworking, and changing trends in modes of transportation
 - The importance of equity in the analysis
 - More details on geographic differences in the region
 - Provide more details as to why
 - Present more than just peak-period
 - Too much information is presented and need to pare down for public consumption
 - Ensure the messaging jives with other TPB and COG initiatives



Performance Analysis Update

- Suggestions or comments on potential criteria to consider?
- Suggestions on potential measures to consider?



Sergio Ritacco

TPB Transportation Planner
(202) 962-3232
sritacco@mwkog.org

Stacy Cook

TPB Transportation Planner
(202) 962-3335
scook@mwkog.org

mwkog.org/tpb

Metropolitan Washington Council of Governments
777 North Capitol Street NE, Suite 300
Washington, DC 20002

