



Rushern L. Baker, III
County Executive

GREEN/COMPLETE STREET PROGRAM

James D. Wilson, P.E.
Chief, Highways and Bridges Division
Prince George's County
Department of Public Works and
Transportation



AGER ROAD REPRESENTATIVE PROJECT

EXISTING CONDITIONS



EXISTING CONDITIONS

TYPICAL SECTIONS

- Two to Three Thru Lanes (Each Direction)
- Service Drive
- Dedicated Right and Left Turn Lanes
- Median
- Closed Section
- 30 mph Speed Limit
- Level of Service 'A'
Excellent Traffic Flow



EXISTING CONDITIONS

ON-STREET PARKING

- Parking by Residents
- Parking by Metro Patrons



EXISTING CONDITIONS

SIDEWALK AND PEDESTRIAN FACILITIES

- Narrow Sidewalk w/Obstructions
- Not ADA Compliant
- Lack of Connectivity to Other Trails



EXISTING CONDITIONS

BICYCLE ACCOMMODATIONS

- No Striped or Signed Bike Lanes
- Shoulders Used by Bicycles South of Ogelthorpe Street
- No Connection to Northwest Branch Trail



EXISTING CONDITIONS

TRANSIT USE

- Metro Bus
- Prince George's County TheBus
- Metro Station Access
- Bus Shelters



EXISTING CONDITIONS

STORM DRAINAGE

- To Sligo Creek and Northwest Branch with No Controls
- Numerous Inlets along Ager Road
- Areas with Surface Water Ponding



EXISTING CONDITIONS

UTILITIES

- Overhead Electric, Cable and Telephone Wires
 - Impacts to Pedestrian Facilities
- Underground Utilities
 - Water and Sanitary Sewer (WSSC)
 - Telephone and Cable
 - Gas
- Roadway Lighting on Utility Poles



GREEN /COMPLETE STREET DESIGN CONCEPTS

GREEN/COMPLETE STREET DESIGN

ALTERNATIVE INCORPORATING A ROAD DIET

2 Lanes in Each Direction

- Maintains Current Level of Service A w/Minimal Increase in Queue Lengths (Excellent Traffic Flow)
- Transit Stops in Travel Lane with Minimal Traffic Impact
- Provide Median to Maintain Left Turn Lanes
- No On-Street Parking – Maintain Parking on Service Road

GREEN/COMPLETE STREET DESIGN



GREEN/COMPLETE STREET DESIGN

INTERSECTIONS

- Signal Control
 - Maintain/Modernize Current Signals
 - Review Signal Timing and Systemization
- Roundabouts
 - Full Roundabout at Nicholson Street
 - Will Operate Adequately with Two-Lane Alternative



GREEN/COMPLETE STREET DESIGN

ENHANCE PEDESTRIAN FACILITIES

- Install 6' Sidewalks Throughout
- Add ADA Ramps at All Locations
- Remove "Pinch Points" at Utility Poles, Signs, etc.
- Complete Connections to Other Facilities
 - Northwest Branch Trail
 - Metro Station
 - Hyattsville Metro Station

PROMOTE PEDESTRIAN ACCESS TO SCHOOL, CHURCHES, PARKS AND PUBLIC TRANSPORTATION



GREEN/COMPLETE STREET DESIGN

INCORPORATE BICYCLE FACILITIES

- Include Bike Lanes in the Roadway for Commuter/Avid Cyclists
- Incorporate a Shared Use ("Hiker/Biker") Trail/Sidewalk for Recreational Cyclists

PROVIDE CONNECTIVITY TO SCHOOL, PARKS, TRAILS and HYATTSVILLE METRO STATION



GREEN/COMPLETE STREET DESIGN

ENHANCE TRANSIT FACILITIES

- Increase Accessibility to Existing Bus Stops
 - Metrobus Route F6
 - Prince George's County TheBus
- Enhance Connectivity to Hyattsville Metro Station
- Make Existing Stops More User Friendly
 - Install New Bus Shelters
 - Provide Adequate Standing Space
 - Provide 8' Depth to Allow for Bus Lift Deployment

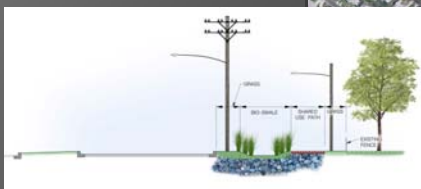


GREEN STREET CONCEPTS

GREEN STREET CONCEPTS

ADDRESS TMDL REQUIREMENTS THRU:

- Vegetated Swales
 - Bio-Swale and Bio-Filtration
 - Incorporate Into Median and Grass Buffer
- Open Sections



TYPICAL BIO-SWALE

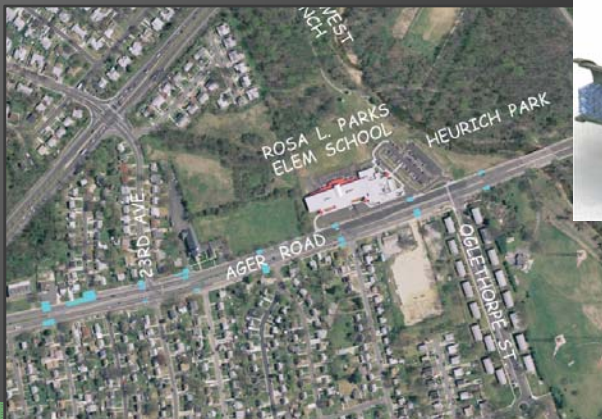


BIO-SWALE LOCATIONS

GREEN STREET CONCEPTS

ADDRESS TMDL REQUIREMENTS THRU:

- Inlet Filtration
 - Stormfilter Inlets
 - Triton Catch Basin Inserts
- Modular Wetlands
 - Incorporate into Median and Grass Buffer



GREEN STREET CONCEPTS

ADDRESS TMDL REQUIREMENTS UTILIZING:

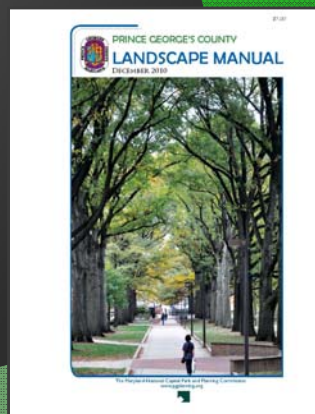
- Outfall Protection
 - Restore Failing Outfalls
 - Provide Coastal Plain Outfalls
- Stream Restoration
 - Look for Opportunities Along Sligo Creek and Northwest Branch
 - Riffle Grade Controls
 - Stream Bank Stabilization Using Natural Fiber Matting



GREEN STREET CONCEPTS

INCORPORATE LANDSCAPING

- Use Species from Recommended Plant Lists
- Use Soil Amendments in Planting Areas to Promote Growth
- Use Soil Amendments in Tree Pits
- Use Deeproot Silva Cells to Promote Tree Growth in Median and Sidewalk Areas

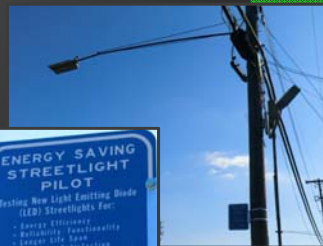


GREEN STREET MATERIALS

GREEN STREET MATERIALS

INCORPORATE OTHER INNOVATIVE MATERIALS

- Green Walls
 - Replace Chain Link Fence at School with Green Wall
- Specify Diamond Grade Sheeting for Signs
- Use LED Signal Heads at Traffic Signals
- Use LED Street Lights
 - Currently in Place Near Hamilton Street



CONCLUSION

AGER ROAD IS A PRIME CANDIDATE TO PILOT THE GREEN/COMPLETE STREET PROGRAM

- Opportunities to Incorporate a "Road Diet"
- Opportunities to Enhance Pedestrian, Bicycle and Transit Facilities
- Opportunities to Meet TMDL Requirements with Possibilities for Credits for WIP
- Opportunities to Incorporate "Green" Materials

