

Median Household Income in COG Region 60% Higher than National Average



Welcome to the fifth in a series of COG Census 2000 reports.

The fifth issue of "Our Changing Region" is based on Summary File 3 (SF3), which contains detailed tables of Census 2000 social, economic, and housing characteristics compiled from a sample of housing units (about one in six households) that received the Census 2000 long-form questionnaire. This issue is devoted to household income, public assistance income, and poverty data found in SF3 tables.

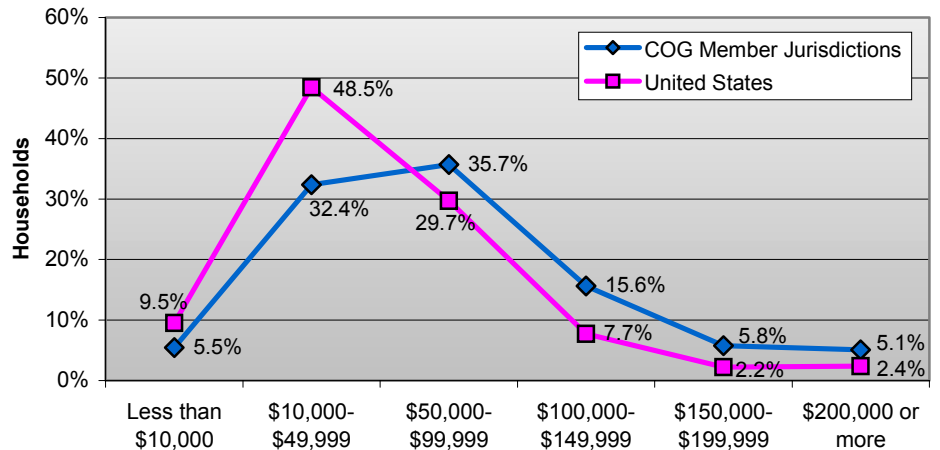
The "Our Changing Region" series is primarily limited to COG member jurisdictions, and thus will focus its analysis on what Census 2000 reveals about the COG region. For comparison purposes, this issue contains summary totals for the federally defined 2003 Washington-Arlington-Alexandria, DC-VA-MD-WV Metropolitan Statistical Area (MSA).

For more Census 2000 reports and data, go to COG's website: www.mwco.org/hspss/censusreports.html or to the Census Bureau's website: www.census.gov/

Inside this Issue:

Household Income by Jurisdiction	1
Poverty by Jurisdiction	4
Poverty by Race and Ethnicity	5
Poverty by Age & Household Type	8
Families in Poverty	9
Households with Public Assistance Income	10
Poverty by Native / Foreign Born Populations	12

Household Income Distribution -- COG Region and the United States



Jurisdiction	Median Household Income
District of Columbia	\$40,127
Frederick County	\$60,276
Montgomery County	\$71,551
City of Gaithersburg ¹	\$59,879
City of Rockville ¹	\$68,074
City of Takoma Park ¹	\$48,490
Prince George's County	\$55,256
City of Bowie ¹	\$76,778
City of College Park ¹	\$50,168
City of Greenbelt ¹	\$46,328
Suburban Maryland ²	\$66,026
City of Alexandria	\$56,054
Arlington County	\$63,001
Fairfax County	\$81,050
City of Fairfax	\$67,642
City of Falls Church	\$74,924
Loudoun County	\$80,648
Prince William County	\$65,960
City of Manassas	\$60,409
Northern Virginia ²	\$76,413
COG Member Jurisdictions²	\$67,042
Washington--Arlington--Alexandria, VA--MD--DC--WV Metropolitan Statistical Area²	\$68,656

¹Population in Maryland cities is included in appropriate county totals

²Figures for these totals are based on a calculated median household income

Note: Median household income is defined as the household income level in the middle of the income distribution

The median household income rose to \$67,042 in the COG region in 2000. This figure represents an increase of 43 percent from the 1990 median household income of \$46,944. The District of Columbia has a median household income of \$40,127, while suburban Maryland is \$66,026, and Northern Virginia is \$76,413. Fairfax County has the highest median household income in the COG region with \$81,050. Loudoun County follows closely with \$80,648, and the City of Bowie with \$76,778.

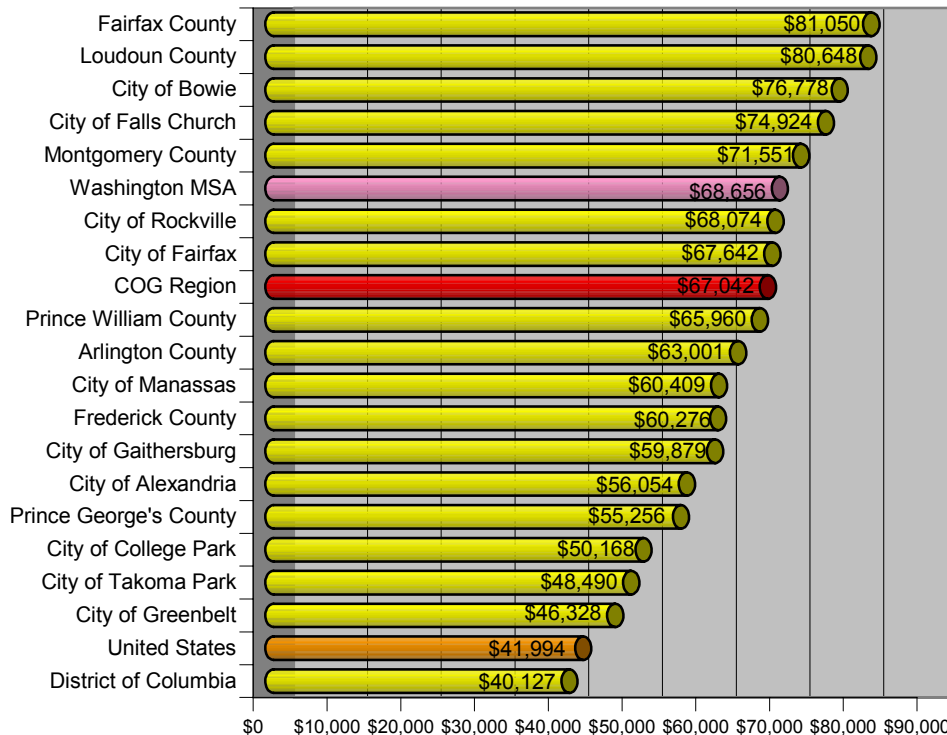
Median Household Income in COG Region More than \$67,000

Household Income Distribution in the Washington Region

Jurisdiction	Total Households	Less than \$10,000	\$10,000-\$29,999	\$30,000-\$49,999	\$50,000-\$99,999	\$100,000-\$149,999	\$150,000-\$199,999	\$200,000 or more
District of Columbia	248,590	14.9%	23.4%	20.4%	24.9%	8.4%	3.3%	4.7%
Frederick County	70,115	3.9%	15.4%	20.9%	40.9%	13.5%	3.2%	2.2%
Montgomery County	324,940	3.7%	11.5%	16.8%	35.6%	17.4%	7.4%	7.6%
City of Gaithersburg ¹	19,686	4.0%	13.4%	22.4%	38.5%	15.1%	3.6%	3.0%
City of Rockville ¹	17,222	4.8%	13.7%	15.8%	35.9%	18.0%	7.2%	4.6%
City of Takoma Park ¹	6,873	9.9%	20.8%	20.8%	30.4%	10.8%	4.2%	3.1%
Prince George's County	286,650	5.1%	16.3%	22.8%	38.8%	12.7%	3.0%	1.3%
City of Bowie ¹	18,155	1.5%	6.5%	14.7%	48.6%	20.7%	6.0%	2.1%
City of College Park ¹	6,003	10.9%	18.3%	20.7%	36.0%	9.8%	3.3%	1.1%
City of Greenbelt ¹	9,300	5.5%	18.2%	30.6%	33.3%	9.5%	1.8%	1.1%
Suburban Maryland	681,705	4.3%	13.9%	19.7%	37.5%	15.0%	5.1%	4.4%
City of Alexandria	61,968	5.5%	15.7%	22.4%	34.4%	12.2%	4.6%	5.2%
Arlington County	86,474	5.2%	13.1%	19.2%	35.7%	15.4%	5.9%	5.5%
Fairfax County	351,279	2.6%	8.7%	14.2%	36.9%	21.0%	9.0%	7.5%
City of Fairfax	8,013	2.9%	10.1%	18.6%	41.9%	16.1%	6.3%	4.1%
City of Falls Church	4,472	3.5%	11.0%	16.2%	33.4%	21.2%	6.9%	7.8%
Loudoun County	59,921	2.1%	8.0%	13.9%	40.7%	22.7%	7.4%	5.3%
Prince William County	94,662	2.7%	11.4%	19.6%	42.8%	17.0%	4.4%	2.2%
City of Manassas	11,785	3.0%	15.0%	20.9%	41.6%	13.9%	3.0%	2.6%
Northern Virginia	678,574	3.2%	10.3%	16.5%	37.8%	18.9%	7.3%	6.0%
COG Member Jurisdictions	1,608,869	5.5%	13.9%	18.5%	35.7%	15.6%	5.8%	5.1%
Washington--Arlington--Alexandria, VA--MD--DC--WV Metropolitan Statistical Area	1,801,849	5.4%	12.4%	18.7%	36.3%	15.4%	5.4%	4.8%

¹Population in Maryland cities is included in appropriate county totals

Median Household Income

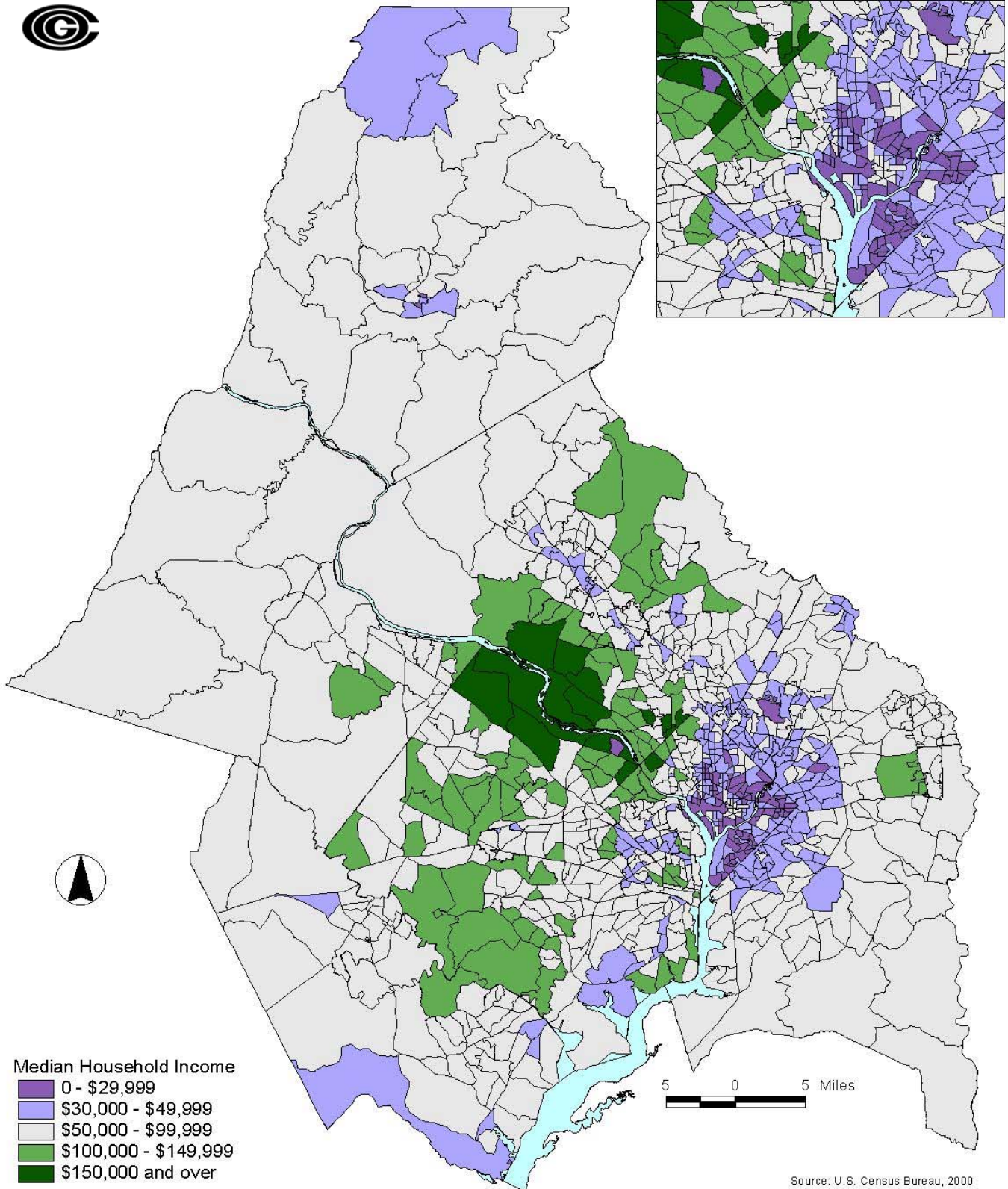


The COG region's median household income tracks nearly 60 percent higher than the U.S. median household income of \$41,994. More than one-third of the region's households earn between \$50,000 and \$99,999.

More than a quarter of the households earn \$100,000 or more. In Fairfax and Loudoun counties, more than one in three households earn \$100,000 or more.

Nearly one in five of the region's households earn less than \$30,000. In the District of Columbia, this figure increases to one in three households.

Median Household Income in the Washington Region, 2000



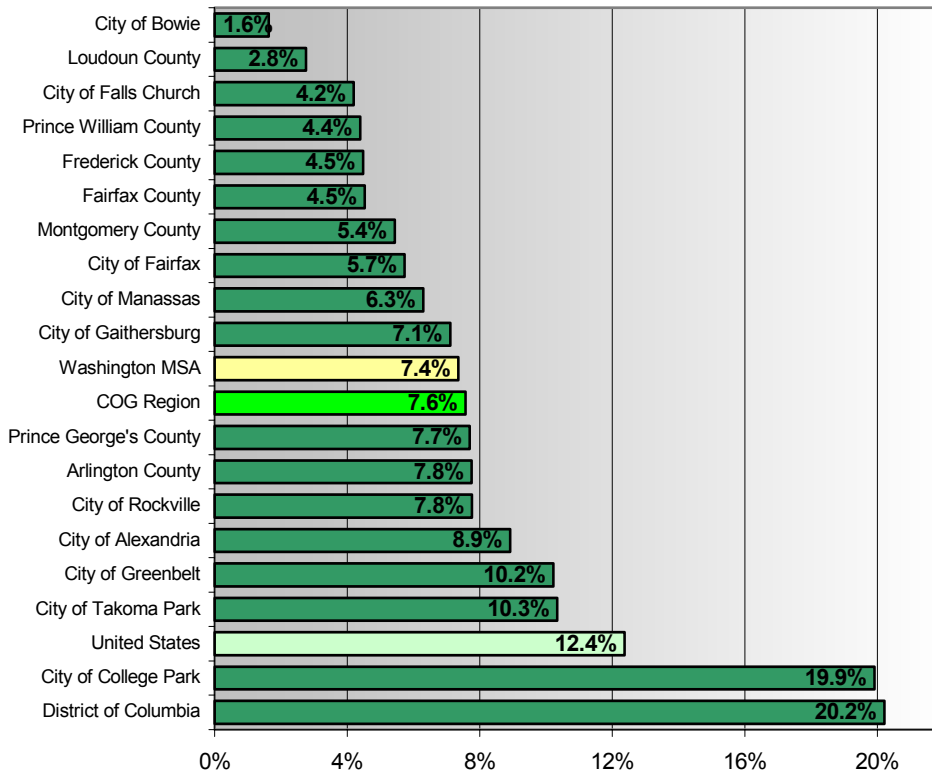
Nearly 315,000 People in Poverty in the COG Region

Change in Population in Poverty, 1990 and 2000

Jurisdiction	1990		2000		Change 1990 to 2000	Percent Change in People Below Poverty 1990 to 2000
	Population Below Poverty	Percent Below Poverty	Population Below Poverty	Percent Below Poverty		
District of Columbia	96,278	16.9%	109,500	20.2%	13,222	3.4%
Frederick County	7,055	4.8%	8,550	4.5%	1,495	-0.3%
Montgomery County	31,651	4.2%	47,024	5.4%	15,373	1.2%
City of Gaithersburg ¹	2,329	6.0%	3,718	7.1%	1,389	1.2%
City of Rockville ¹	2,519	5.8%	3,555	7.8%	1,036	2.0%
City of Takoma Park ¹	1,218	7.5%	1,722	10.3%	504	2.9%
Prince George's County	41,282	5.8%	60,196	7.7%	18,914	1.9%
City of Bowie ¹	420	1.1%	805	1.6%	385	0.5%
City of College Park ¹	2,695	17.1%	3,154	19.9%	459	2.8%
City of Greenbelt ¹	2,010	9.6%	2,177	10.2%	167	0.6%
Suburban Maryland	79,988	5.0%	115,770	6.3%	35,782	1.3%
City of Alexandria	7,732	7.1%	11,279	8.9%	3,547	1.8%
Arlington County	11,895	7.1%	14,371	7.8%	2,476	0.6%
Fairfax County	28,210	3.5%	43,396	4.5%	15,186	1.0%
City of Fairfax	1,161	6.0%	1,205	5.7%	44	-0.3%
City of Falls Church	493	5.2%	432	4.2%	-61	-1.0%
Loudoun County	2,625	3.1%	4,637	2.8%	2,012	-0.3%
Prince William County	6,854	3.2%	12,182	4.4%	5,328	1.2%
City of Manassas	1,028	3.8%	2,151	6.3%	1,123	2.5%
Northern Virginia	52,266	3.6%	78,374	5.0%	26,108	1.4%
COG Member Jurisdictions	236,264	6.5%	314,923	7.6%	78,659	1.0%
Washington--Arlington--Alexandria, VA--MD--DC--WV Metropolitan Statistical Area	260,075	6.5%	345,860	7.4%	85,785	0.9%

¹ Population in Maryland cities is included in appropriate county totals

Population Living in Poverty



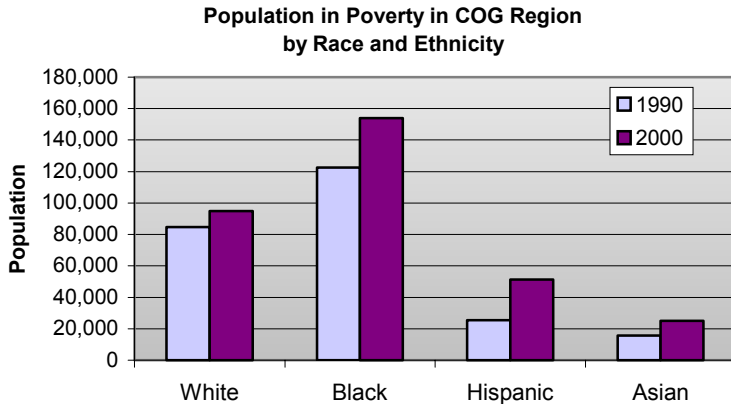
Nearly 315,000 people are living in poverty in the COG region, according to Census 2000 data.

The number of people living below the poverty line increased from 6.5 percent in 1990 to 7.6 percent in 2000. Nationally, the trend reflected a 0.7 percent decline in poverty, from 13.1 percent to 12.4 percent over the last decade.

In the District of Columbia and the City of College Park, one in five residents live below poverty. One in 10 residents live below poverty in the cities of Greenbelt and Takoma Park.

Most jurisdictions in the COG region experienced increases in poverty rates over the last decade. Poverty in the District of Columbia grew by 3.3 percent, with the cities of Takoma Park and College Park following closely behind. The cities of Fairfax and Falls Church, and the counties of Frederick and Loudoun experienced declining poverty rates from 1990 to 2000.

The Number of People in Poverty Increases Across All Races and Ethnicities



The number of people living in poverty increased across all races and ethnicities over the last decade. All races and ethnicities also saw a rise in the percentage of those living below poverty.

A Note on How the Census Bureau Measures Poverty

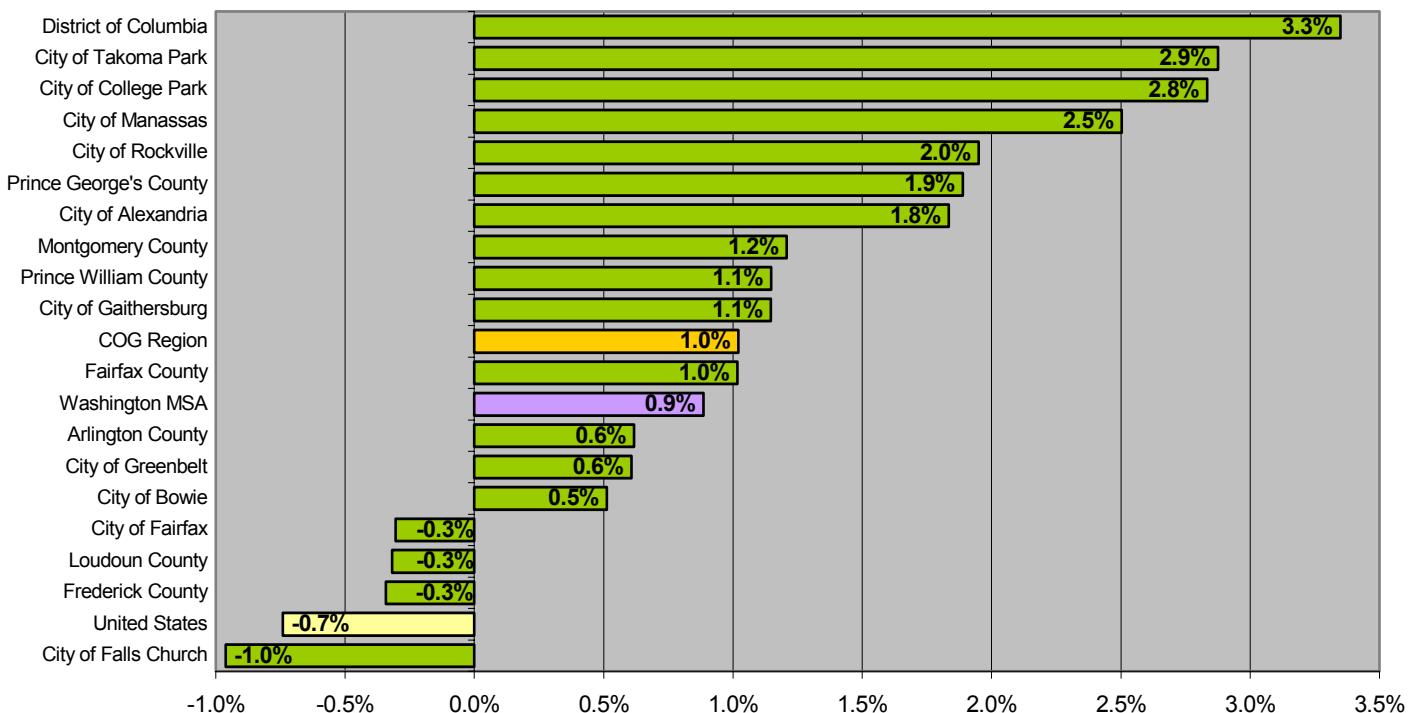
The following is an excerpt from the U.S. Census Bureau website:

“Following the Office of Management and Budget’s (OMB) Statistical Policy Directive 14, the Census Bureau uses a set of money income thresholds that vary by family size and composition to determine who is poor. If a family’s total income is less than that family’s threshold, then that family, and every individual in it, is considered poor. The poverty thresholds do not vary geographically, but they are updated annually for inflation using the Consumer Price Index (CPI-U). The official poverty definition counts money income before taxes and does not include capital gains and noncash benefits (such as public housing, Medicaid, and food stamps). Poverty is not defined for people in military barracks, institutional group quarters, or for unrelated individuals under age 15 (such as foster children). They are excluded from the poverty universe—that is, they are considered neither as ‘poor’ nor as ‘nonpoor.’”

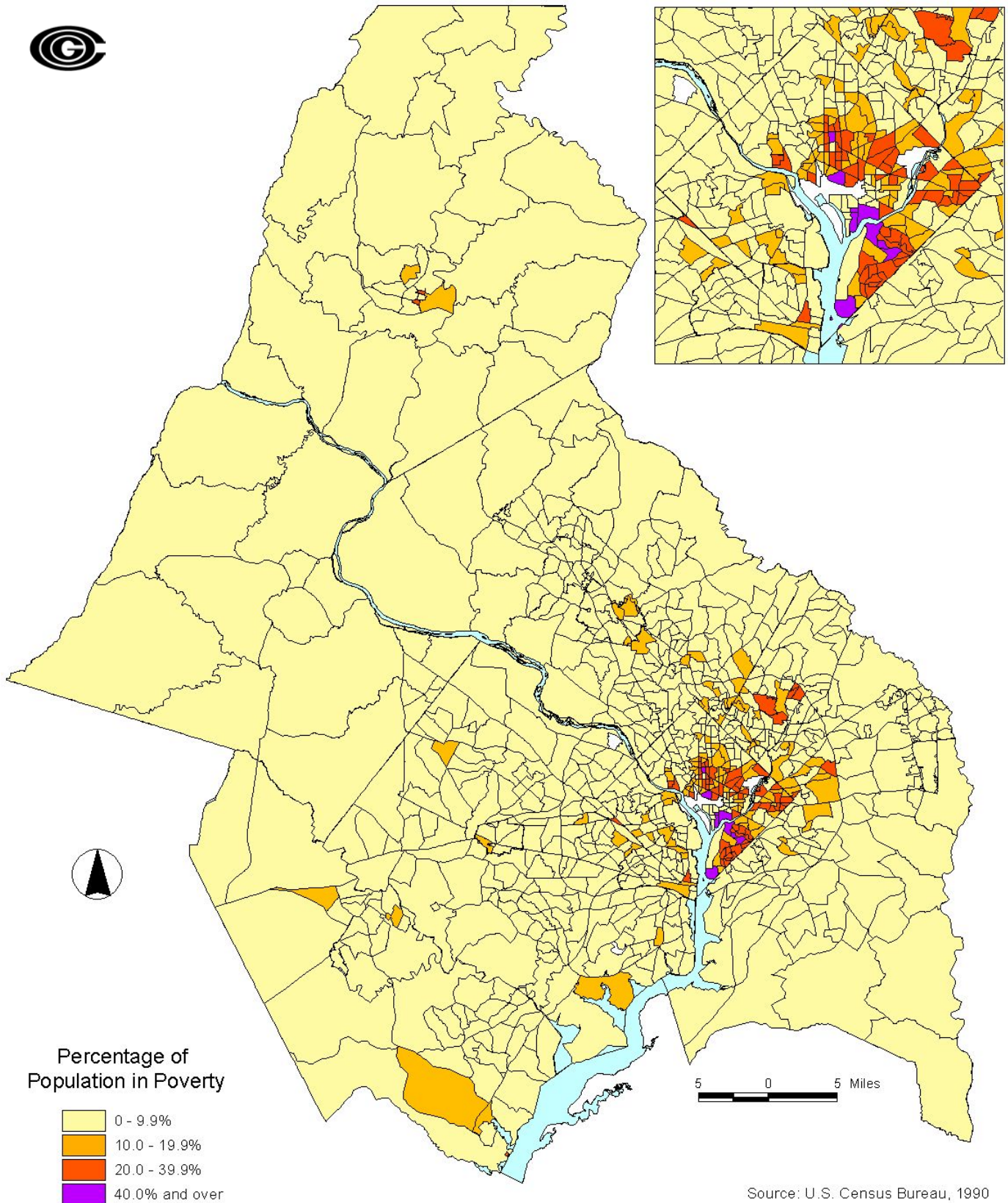
Poverty in the COG Region by Race and Ethnicity

	1990			2000		
	Total Population	Population in Poverty	Percent in Poverty	Total Population	Population in Poverty	Percent in Poverty
White	2,341,224	84,664	3.6%	2,351,756	94,980	4.0%
Black	975,374	122,593	12.6%	1,154,642	153,928	13.3%
Hispanic	209,882	25,455	12.1%	407,756	51,269	12.6%
Asian	196,625	15,643	8.0%	313,449	24,976	8.0%

Change in Poverty Rate by Jurisdiction 1990 to 2000

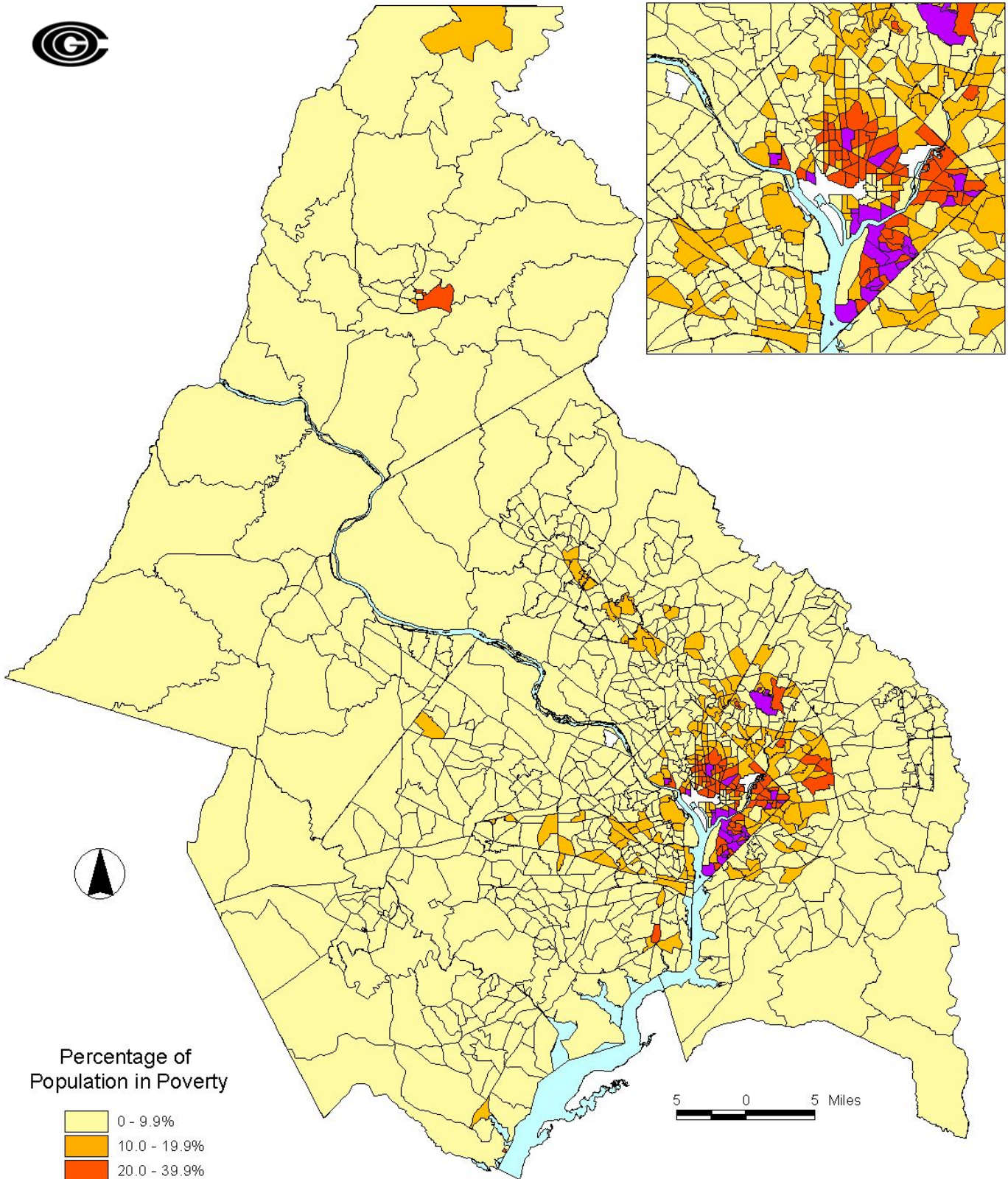


Poverty in the Washington Region, 1990



Source: U.S. Census Bureau, 1990

Poverty in the Washington Region, 2000



Source: U.S. Census Bureau, 2000

Married Couples Account for 26 Percent of People Living in Poverty

Population in Poverty by Age and Household Type in the Washington Region

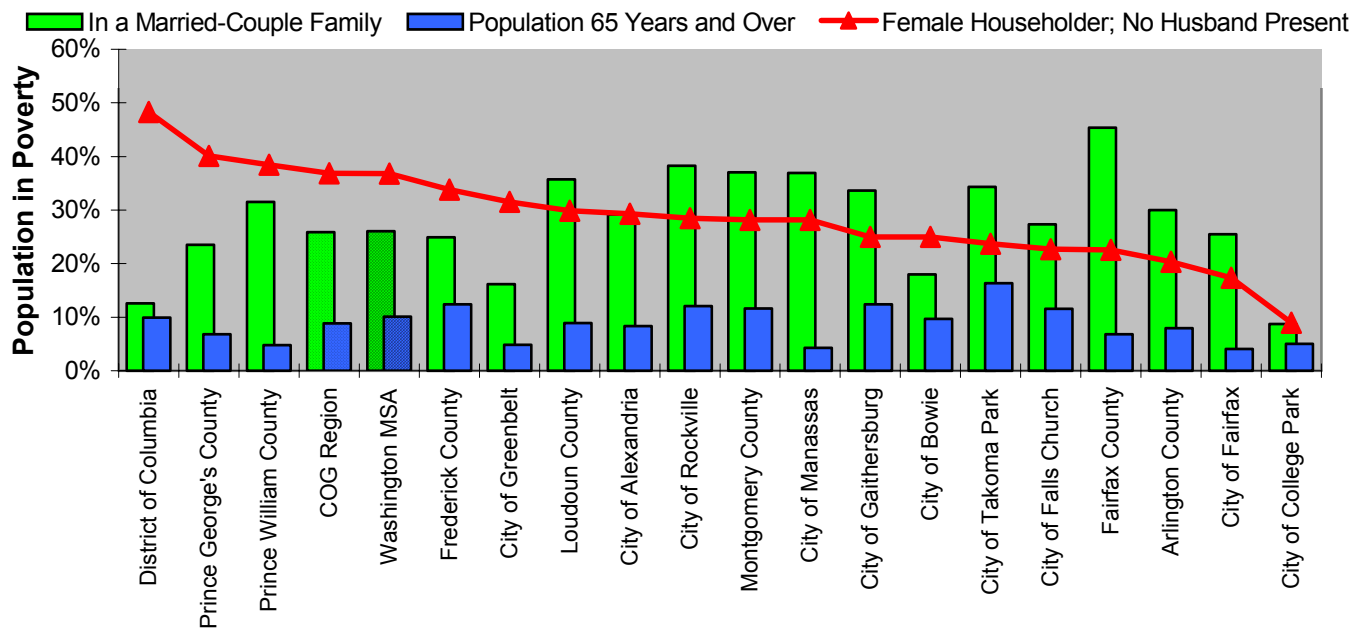
Jurisdiction	Population in Poverty	Population Under 65 Years	Population 65 Years and Over	Married-Couple Family	Female Householder; No Husband Present	Unrelated Individuals
District of Columbia	109,500	90.1%	9.9%	12.6%	48.3%	33.3%
Frederick County	8,550	87.6%	12.4%	24.9%	33.8%	32.9%
Montgomery County	47,024	88.4%	11.6%	37.1%	28.2%	26.6%
City of Gaithersburg ¹	3,718	87.6%	12.4%	33.6%	25.0%	30.8%
City of Rockville ¹	3,555	87.9%	12.1%	38.3%	28.5%	25.8%
City of Takoma Park ¹	1,722	83.7%	16.3%	34.3%	23.7%	35.9%
Prince George's County	60,196	93.2%	6.8%	23.5%	40.1%	27.1%
City of Bowie ¹	805	90.3%	9.7%	18.0%	25.0%	51.7%
City of College Park ¹	3,154	95.0%	5.0%	8.7%	9.0%	78.9%
City of Greenbelt ¹	2,177	95.2%	4.8%	16.1%	31.6%	45.5%
Suburban Maryland	115,770	90.8%	9.2%	29.1%	34.8%	27.4%
City of Alexandria	11,279	91.7%	8.3%	29.2%	29.3%	32.8%
Arlington County	14,371	92.0%	8.0%	30.0%	20.4%	41.1%
Fairfax County	43,396	93.2%	6.8%	45.4%	22.6%	23.5%
City of Fairfax	1,205	95.9%	4.1%	25.5%	17.3%	50.1%
City of Falls Church	432	88.4%	11.6%	27.3%	22.7%	32.6%
Loudoun County	4,637	91.1%	8.9%	35.7%	29.9%	27.2%
Prince William County	12,182	95.3%	4.7%	31.6%	38.5%	18.0%
City of Manassas	2,151	95.8%	4.2%	37.0%	28.1%	23.1%
Northern Virginia	89,653	80.1%	6.9%	38.0%	25.7%	27.3%
COG Member Jurisdictions	314,923	91.2%	8.8%	25.9%	36.9%	29.4%
Washington--Arlington--Alexandria, VA--MD--DC--WV Metropolitan Statistical Area	345,049	91.0%	10.1%	26.0%	36.8%	29.2%

¹Population in Maryland cities is included in appropriate county totals

Poverty cuts across all age groups and all household types in the COG region. While the majority of people living in poverty are under 65 years old, nearly one in 10 persons in poverty are elderly. The City of Takoma Park has the highest percentage of elderly who live in poverty: 16.3 percent. More than one-quarter of people in poverty in the COG region are married couples. In Fairfax County, married couples account for 45 percent of people living in poverty.

Nearly 37 percent of the population in poverty are female-headed householders. The District of Columbia has the highest rate, with female-headed householders accounting for 48 percent of people in poverty. More than 29 percent of the population in poverty are unrelated individuals. The Census Bureau defines unrelated individuals as persons sharing a housing unit, who are not related to the householder by birth, marriage or adoption (this includes foster children.) The population living in poverty in the City of College Park is nearly 79 percent unrelated individuals, presumably college students.

Population in Poverty by Age and Household Type



Nearly Half of All Families in Poverty are Headed by Single Mothers

Families in Poverty in the COG Region

Jurisdiction	Families in Poverty	Married-couple Families	Married-couple Families with Children Under 18 years	Families Not Married	Families with Female Householder; No husband present	Families with Female Householder; no husband present; with Children under 18 years
District of Columbia	19,365	17.2%	10.2%	82.8%	73.7%	62.9%
Frederick County	1,530	37.5%	20.0%	62.5%	53.3%	50.7%
Montgomery County	8,428	46.3%	28.2%	53.7%	44.6%	38.0%
City of Gaithersburg ¹	633	48.3%	28.1%	51.7%	45.0%	42.3%
City of Rockville ¹	668	49.6%	26.6%	50.4%	41.2%	38.6%
City of Takoma Park ¹	333	48.3%	24.3%	51.7%	41.1%	27.0%
Prince George's County	10,641	30.5%	19.7%	69.5%	59.3%	52.4%
City of Bowie ¹	94	25.5%	13.8%	74.5%	66.0%	57.4%
City of College Park ¹	131	40.5%	25.2%	59.5%	41.2%	28.2%
City of Greenbelt ¹	299	24.7%	19.7%	75.3%	63.2%	55.5%
Suburban Maryland	20,599	37.5%	21.7%	62.5%	52.8%	46.4%
City of Alexandria	1,921	39.6%	25.8%	60.4%	50.4%	44.0%
Arlington County	1,987	50.9%	31.1%	49.1%	37.3%	32.1%
Fairfax County	7,507	54.6%	40.1%	45.4%	36.4%	31.3%
City of Fairfax	131	54.2%	29.0%	45.8%	39.7%	33.6%
City of Falls Church	74	31.1%	16.2%	68.9%	43.2%	43.2%
Loudoun County	781	43.7%	29.6%	56.3%	51.3%	45.2%
Prince William County	2,406	34.0%	26.9%	66.0%	52.7%	49.3%
City of Manassas	316	42.1%	34.5%	57.9%	45.9%	38.6%
Northern Virginia	15,123	48.0%	34.1%	52.0%	41.9%	36.8%
COG Member Jurisdictions	55,087	33.2%	21.6%	66.8%	57.2%	49.6%
Washington--Arlington--Alexandria, VA--MD--DC--WV Metropolitan Statistical Area	60,774	33.6%	21.6%	66.4%	56.8%	49.4%

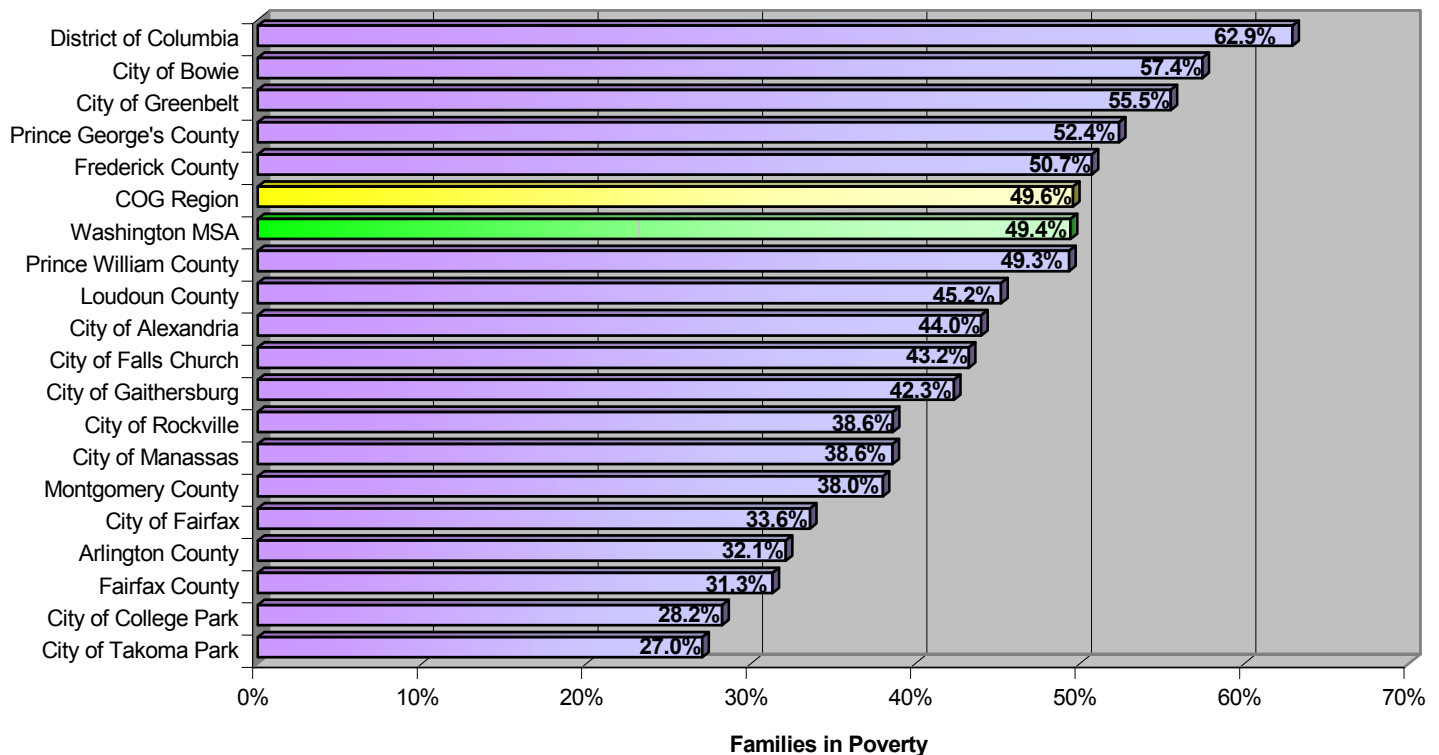
There are more than 55,000 families living in poverty in the COG region. One-third of families in poverty are comprised of married couples. Northern Virginia has the highest rate of married-couple families in poverty at 48 percent.

Families that are not married account for 67 percent of families in poverty in the COG region. The largest subset of this group is families with female householders. They account for more than 57 percent of families in poverty.

Families headed by single mothers with children under 18 make up nearly half of all families in poverty in the COG region. In the District of Columbia, single mothers make up the majority of families in poverty at 63 percent. The cities of Bowie and Greenbelt follow closely with 57 and 56 percent, respectively.

¹Population in Maryland cities is included in appropriate county totals

Families Headed by Single Mothers with Children Under 18 Years in Poverty



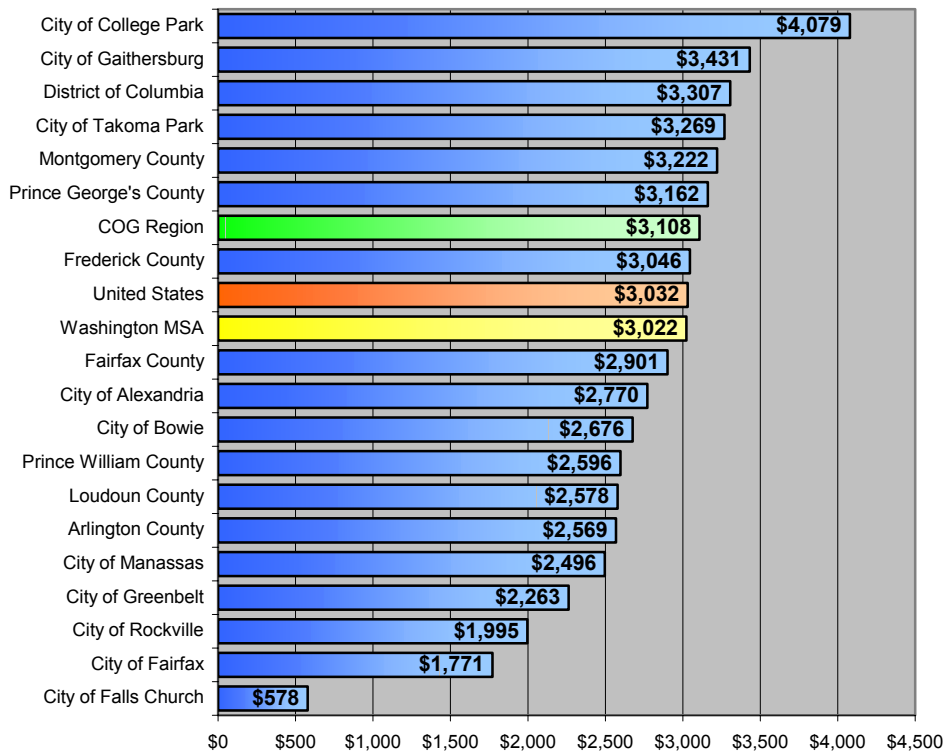
More than 33,000 Households with Public Assistance Income in the COG Region

Households Receiving Public Assistance Income

Jurisdiction	Households: Total	Households: With Public Assistance Income	Percent Households with Public Assistance Income	Aggregate Public Assistance Income in 1999	Public Assistance Income Per Household
District of Columbia	248,590	13,664	5.5%	\$45,181,500	\$3,307
Frederick County	70,115	978	1.4%	\$2,979,400	\$3,046
Montgomery County	324,940	4,258	1.3%	\$13,718,300	\$3,222
City of Gaithersburg ¹	19,686	417	2.1%	\$1,430,800	\$3,431
City of Rockville ¹	17,222	206	1.2%	\$411,000	\$1,995
City of Takoma Park ¹	6,873	170	2.5%	\$555,800	\$3,269
Prince George's County	286,650	5,600	2.0%	\$17,705,200	\$3,162
City of Bowie ¹	18,155	112	0.6%	\$299,700	\$2,676
City of College Park ¹	6,003	39	0.6%	\$159,100	\$4,079
City of Greenbelt ¹	9,300	133	1.4%	\$301,000	\$2,263
Suburban Maryland	681,705	10,836	1.6%	\$34,402,900	\$3,175
City of Alexandria	61,968	886	1.4%	\$2,454,100	\$2,770
Arlington County	86,474	1,485	1.7%	\$3,814,300	\$2,569
Fairfax County	351,279	4,021	1.1%	\$11,664,800	\$2,901
City of Fairfax	8,013	154	1.9%	\$272,800	\$1,771
City of Falls Church	4,472	60	1.3%	\$34,700	\$578
Loudoun County	59,921	463	0.8%	\$1,193,800	\$2,578
Prince William County	94,662	1,553	1.6%	\$4,032,200	\$2,596
City of Manassas	11,785	158	1.3%	\$394,300	\$2,496
Northern Virginia	678,574	8,780	1.3%	\$23,861,000	\$2,718
COG Member Jurisdictions	1,608,869	33,280	2.1%	\$103,445,400	\$3,108
Washington--Arlington--Alexandria, VA--MD--DC--WV Metropolitan Statistical Area	1,801,849	36,472	2.0%	\$110,211,700	\$3,022

¹Population in Maryland cities is included in appropriate county totals

Average Income Received by Households with Public Assistance Income¹



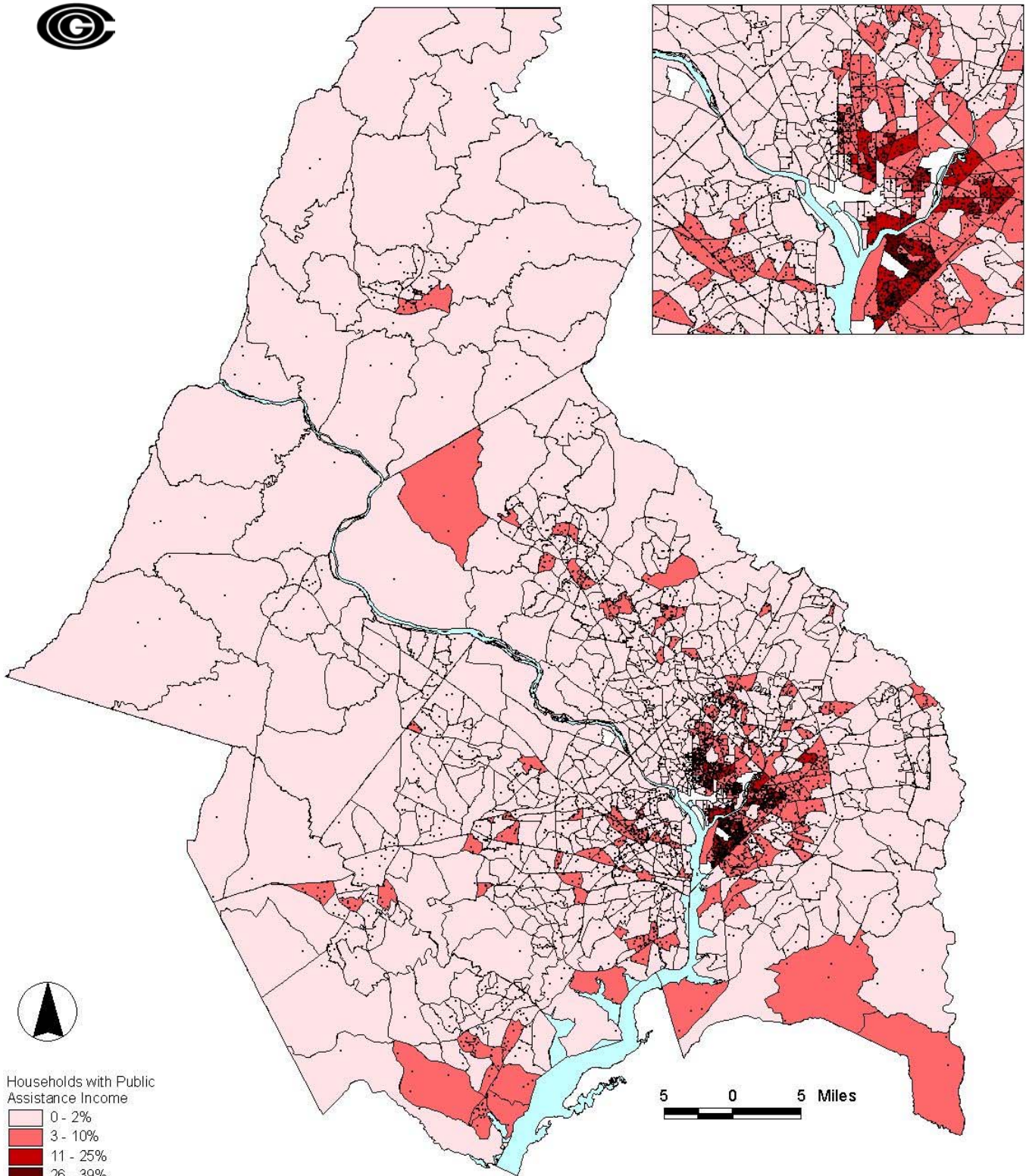
There are more than 33,000 households that receive public assistance income, according to Census 2000. In the COG region, households with public assistance income account for two percent of all households, compared with the national figure of three percent.

The aggregate amount of public assistance income reported in the region was more than \$103 million. The average amount of public assistance income is more than \$3,100 per household. This figure is slightly higher than the national average of \$3,032 per household.

The City of College Park has the fewest households receiving public assistance, but has the highest average public assistance income per household: \$4,079. The City of Gaithersburg and the District of Columbia follow closely behind with \$3,431 and \$3,307 in average public assistance income.

¹Based on aggregate public assistance income from 1999

Households with Public Assistance Income in the Washington Region



Households with Public Assistance Income

- 0 - 2%
- 3 - 10%
- 11 - 25%
- 26 - 39%

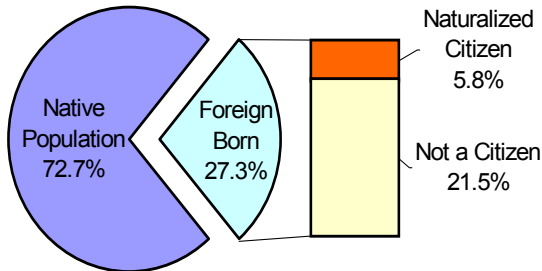
1 Dot = 10 Households with Public Assistance Income

Source: U.S. Census Bureau, 2000



Nearly Three Quarters of People in Poverty are Native Born

Native / Foreign Born Population in Poverty in the COG Region



Native / Foreign Born Population Living Below Poverty in the COG Region

	Population in Poverty	Percent Share
Native Population	228,990	72.7%
Foreign Born	85,933	27.3%
Naturalized Citizen	18,162	5.8%
Not a Citizen	67,771	21.5%
Total Population in Poverty	314,923	100.0%

In the COG region, 229,000 — nearly three in four — people in poverty are native born citizens. More than one quarter of people in poverty in the region are foreign born. The percentage of foreign-born people in poverty in the COG region is higher than the national figure of 16 percent. Of the people in poverty, 67,771 people, or one in five persons, are not U.S. citizens.

Washington—Arlington—Alexandria, DC—VA—MD—WV MSA

DISTRICT OF COLUMBIA*	Prince George's County*	City of Fairfax*	WEST VIRGINIA
MARYLAND	City of Bowie*	City of Falls Church*	Jefferson County
Calvert County	City of College Park*	Fauquier County	
Charles County	City of Greenbelt*	City of Fredericksburg	
Frederick County*	VIRGINIA	Loudoun County*	
Montgomery County*	City of Alexandria*	City of Manassas*	
City of Gaithersburg*	Arlington County*	City of Manassas Park	
City of Rockville*	Clarke County	Prince William County*	
City of Takoma Park*	Fairfax County*	Spotsylvania County	
		Stafford County	
		Warren County	*Indicates COG Members

The Metropolitan Washington Council of Governments (COG) is the regional organization of the Washington region's 18 major local governments.

COG provides a focus for action and develops sound regional responses to such issues as the environment, affordable housing, economic development, health and family concerns, human services, population growth, public safety, and transportation. In addition, COG is an official Census Bureau State Data Center Affiliate and maintains printed Census data and reports from the 1940 Census through Census 2000.

For more information on this and other COG publications, contact COG's Information Center:

Metropolitan Washington Council of Governments
 777 North Capitol Street, NE, Suite 300
 Washington, DC 20002
 Phone: (202) 962-3256
 e-mail: infocntr@mwvcog.org

