

**Briefing on Draft
Congestion Management Process
Elements for the 2007 CLRP**

Andrew J. Meese, AICP
COG/TPB Staff

October 9, 2007

Introduction

- A Congestion Management Process (CMP) is a requirement in metropolitan transportation planning
 - SAFETEA-LU
 - March 2006 Federal certification of the TPB process
- Metropolitan long-range plans developed after July 1, 2007 must have a CMP
 - Need to develop the CMP in concert with CLRP update anticipated for Fall 2007
- New federal regulations for metropolitan planning issued February 14, 2007 address CMP requirements

Federal Regulation Overview

“The transportation planning process shall address congestion management...

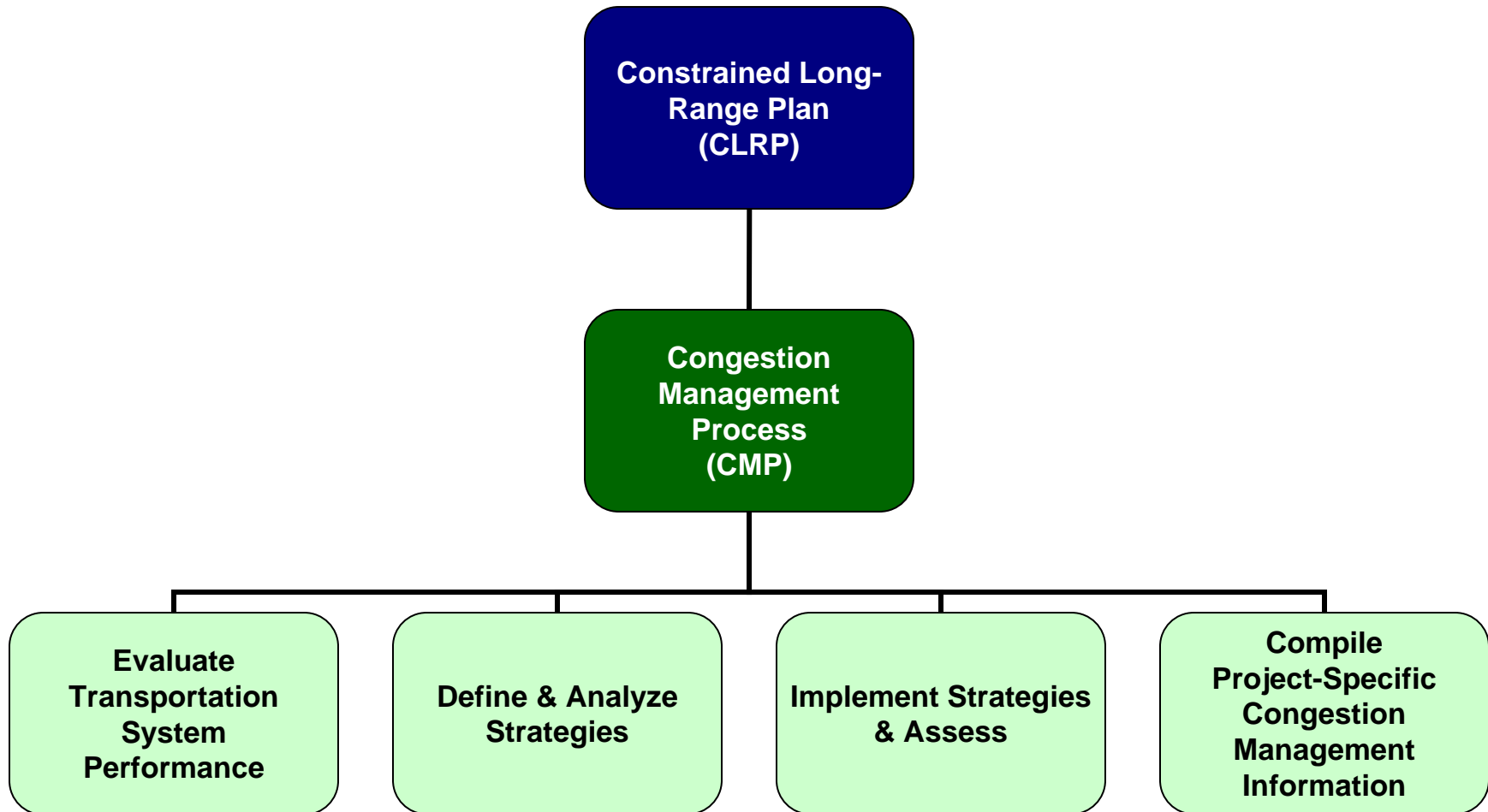
- ...through a process that provides for safe and effective integrated management and operation of the multimodal transportation system...
- ...based on a cooperatively developed and implemented metropolitan-wide strategy...
- ...of new and existing transportation facilities...
- ...through the use of travel demand reduction and operational management strategies.”

[\$450.320(a), Metropolitan Transportation Planning, Final Rule, Federal Register, February 14, 2007 – emphasis added.]

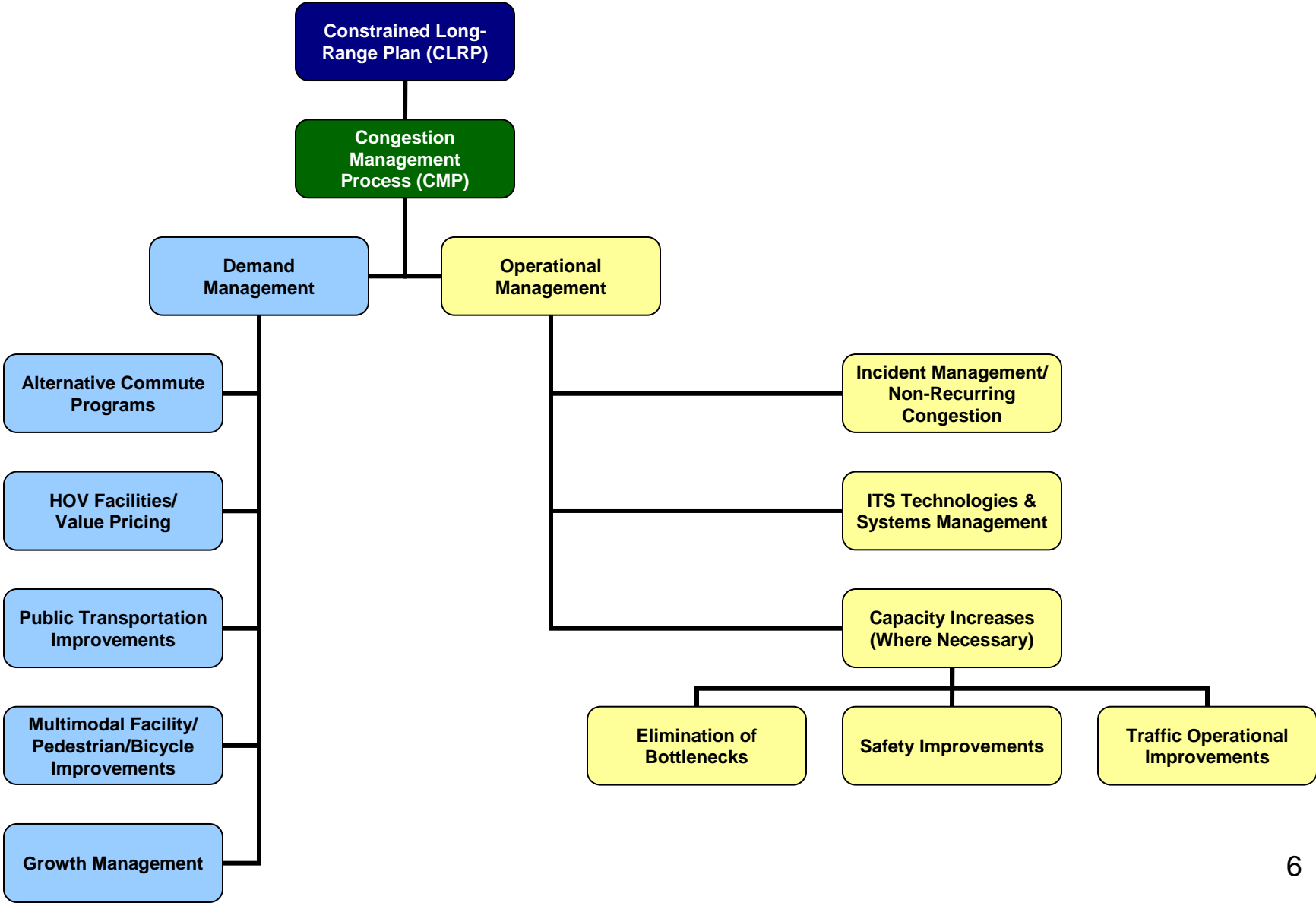
Federal Planning Rule

- Congestion management process requires a systematic approach
- Must be part of the regional transportation plan and include:
 - Methods to monitor and evaluate system performance
 - Objectives and performance measures
 - Data collection
 - Identification and evaluation of the anticipated performance and expected benefits of Congestion Management strategies, including:
 - Demand management
 - Traffic operational improvements
 - Public transportation improvements
 - ITS technologies
 - Where necessary, additional system capacity
 - Assessment of the effectiveness of previously implemented strategies
- SOV-capacity-increasing projects must be in conjunction with a CMP
- The metropolitan transportation plan must include consideration of the results of the CMP

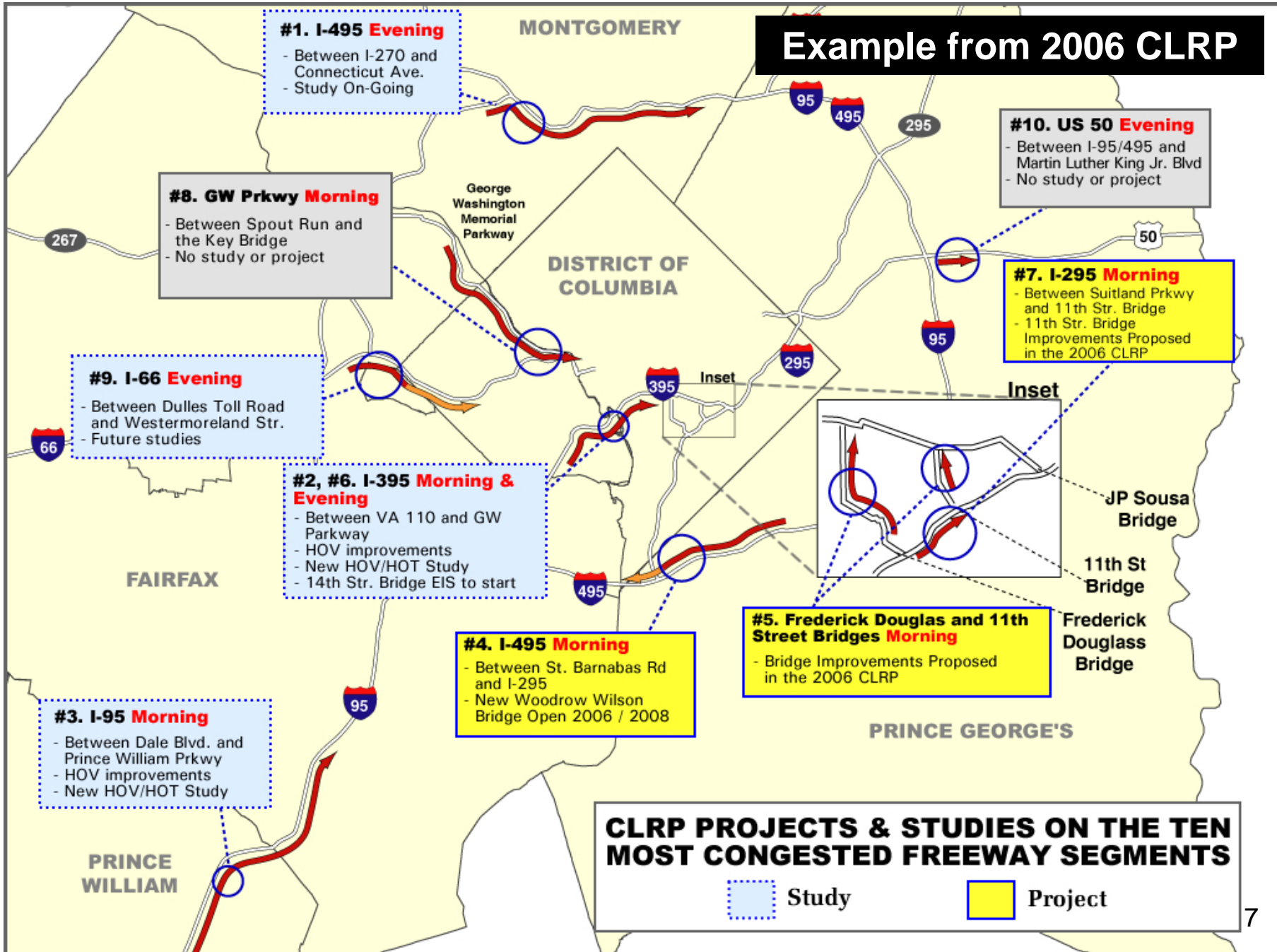
CMP Components



Major CMP Strategies



Example from 2006 CLRP



#1. I-495 Evening
 - Between I-270 and Connecticut Ave.
 - Study On-Going

#8. GW Prkwy Morning
 - Between Spout Run and the Key Bridge
 - No study or project

#9. I-66 Evening
 - Between Dulles Toll Road and Westermoreland Str.
 - Future studies

#2, #6. I-395 Morning & Evening
 - Between VA 110 and GW Parkway
 - HOV improvements
 - New HOV/HOT Study
 - 14th Str. Bridge EIS to start

#4. I-495 Morning
 - Between St. Barnabas Rd and I-295
 - New Woodrow Wilson Bridge Open 2006 / 2008

#3. I-95 Morning
 - Between Dale Blvd. and Prince William Prkwy
 - HOV improvements
 - New HOV/HOT Study

#10. US 50 Evening
 - Between I-95/495 and Martin Luther King Jr. Blvd
 - No study or project

#7. I-295 Morning
 - Between Suitland Prkwy and 11th Str. Bridge
 - 11th Str. Bridge Improvements Proposed in the 2006 CLRP

#5. Frederick Douglas and 11th Street Bridges Morning
 - Bridge Improvements Proposed in the 2006 CLRP

CLRP PROJECTS & STUDIES ON THE TEN MOST CONGESTED FREEWAY SEGMENTS

Study
 Project

Example: 2006 CLRP Projects and Studies on the Ten Most Congested Segments on the Freeway System (2005)

	Route		From	To	Current Status
1	I-495	IL PM	I-270	Connecticut Ave	Beltway Study on-going
2	I-395	NB PM	VA 110	GW Pkwy	HOV improvements New HOV/HOT lane study 14 Street Bridge EIS to start
3	I-95	NB AM	Dale Blvd	Prince William Pkwy	HOV improvements New HOV/HOT lane study
4	I-495	IL AM	St Barnabas Rd	I-295	New Woodrow Wilson Bridge open 2006/08
5	Frederick Douglass WB & 11 th Street Bridges	AM	Anacostia Bridges		Bridge improvements submitted for 2006 CLRP
6	I-395	NB AM	VA 110	GW Pkwy	HOV improvements New HOV/HOT lane study 14 Street Bridge EIS to start
7	I-295	NB AM	Suitland Pkwy	11 th Street Bridge	11 th Street improvements submitted for 2006 CLRP
8	GW Pkwy	AM	Spout Run	Key Bridge	No study or project
9	I-66	EB PM	Dulles Toll Rd	Westmoreland St	Idea 66 Study (WB only) suggested future studies
10	US 50	EB PM	I-95/I-495	ML King Jr. Blvd.	No study or project

CMP Interactions

Program or Committee	CMP- Related Activities
TPB Technical Committee	Long-range plan; interaction with necessary subcommittees – CMP lead
Travel Monitoring Program (in conjunction with the Travel Forecasting Subcommittee)	Travel monitoring and forecasting of future recurring congestion
Management, Operations, and Intelligent Transportation Systems (MOITS) Program	Non-recurring congestion, traffic management, ITS technologies
Commuter Connections Program	Implementation and assessment of regional demand management alternatives
Travel Management Program	Strategy identification and analysis

Development of the CMP

- Two tracks
 - “Initial” CMP components of the December 2007 CLRP
 - Identify congestion in the region (through Skycomp and other available data)
 - Develop and document proposed CM Process
 - “Later” CMP Technical Report
 - Proposed outline was reviewed by Tech Committee in May
 - Development ongoing now, but will continue and be completed after committee review and consensus (by June 2008)
- Travel Management Subcommittee expressed interest in process development

Process Components

- Congestion Monitoring
 - Initial: Existing Skycomp, example arterial information
 - Later: Compilation and analysis of data from additional sources
- Strategy Analysis
 - Initial: Describe proposed process to identify and analyze strategies
 - Later: Use defined process to develop options (e.g. “short lists”)
- Strategy Implementation
 - Initial: Describe existing implemented strategies, particularly through Commuter Connections
 - Later: Review status of those and later-implemented strategies
- SOV Project-Related Strategy Documentation
 - Compile and analyze information gathered through Call for Projects’ Congestion Management Documentation Forms

Schedule

May 4, 2007	CMP Report outline endorsed by TPB Technical Committee
July 1	New FY2008 resources began (separate UPWP task)
Summer/Fall 2007	Staff CMP development & discussions with subcommittees
October 5	Tech Committee review of process framework
Early October	First draft of CLRP CMP components available for review
October 23	Deadline for comments on first draft CLRP CMP components
November 2	Final draft CLRP CMP components
December 2007	Approval of CLRP including CMP components
Winter/Spring 2008	Completion of CMP Technical Report; follow-up/enhancement activities

Outlook

- Document regional status
 - Congested conditions
 - Implementation of CMP-type strategies
- Get committee input and consensus on the new process and integration into overall planning process; document in 2007 CLRP
- Coordinate with overall CLRP development and schedule