



## Tree Canopy at MWCOG






Department of Environmental Programs

Amanda Campbell

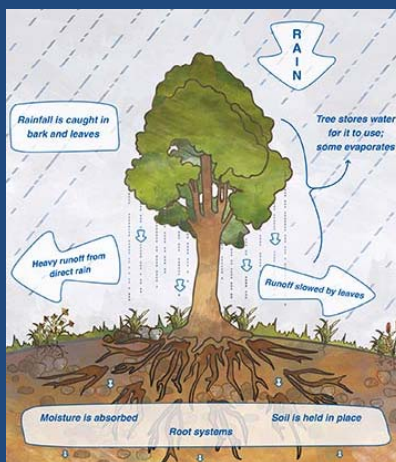
acampbell@mwcog.org

ACPAC December 12, 2011

### *Benefit Summary for Pittsburgh's Street Trees*

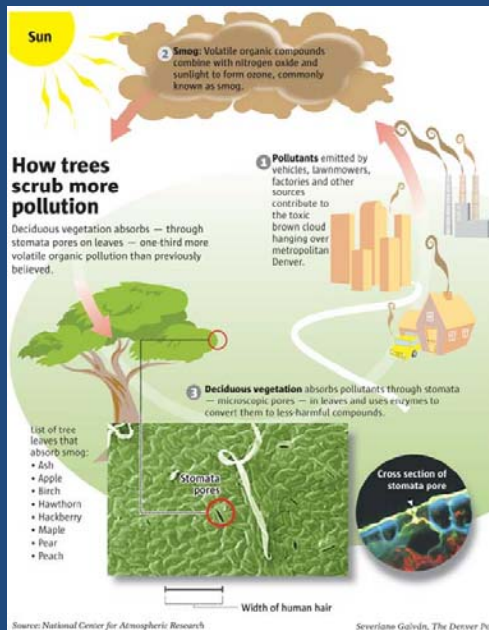
<b>+</b> Benefits	Total (\$)
 Energy	\$1,205,133
 CO2	\$35,424
 Air Quality	\$252,935
 Stormwater	\$334,601
 Aesthetic/Other	\$572,882
<b>➡ Total Benefits</b>	<b>\$2,400,975</b>

## Additional Benefits



## Trees and Air Quality

- **Cooling:** Shade & Evapotranspiration  
Cooling 1-2 degrees could reduce ozone 2-4 ppb
- **Pollutant up-take:** ozone  
nitrogen oxides  
sulfur oxides  
carbon monoxide  
fine particulates
- **Dust deposition**
- **Indirect:** reduced cooling demand from power plants





**Urban Heat Island**

Lighter shades represent higher surface temperatures  
Image source: G. Allen

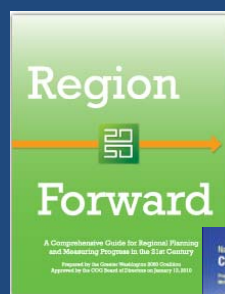




Forests and street trees provide different benefits

## COG Connection

- COG Board
- CEEPC
- Region Forward
- National Capital Climate Change Report



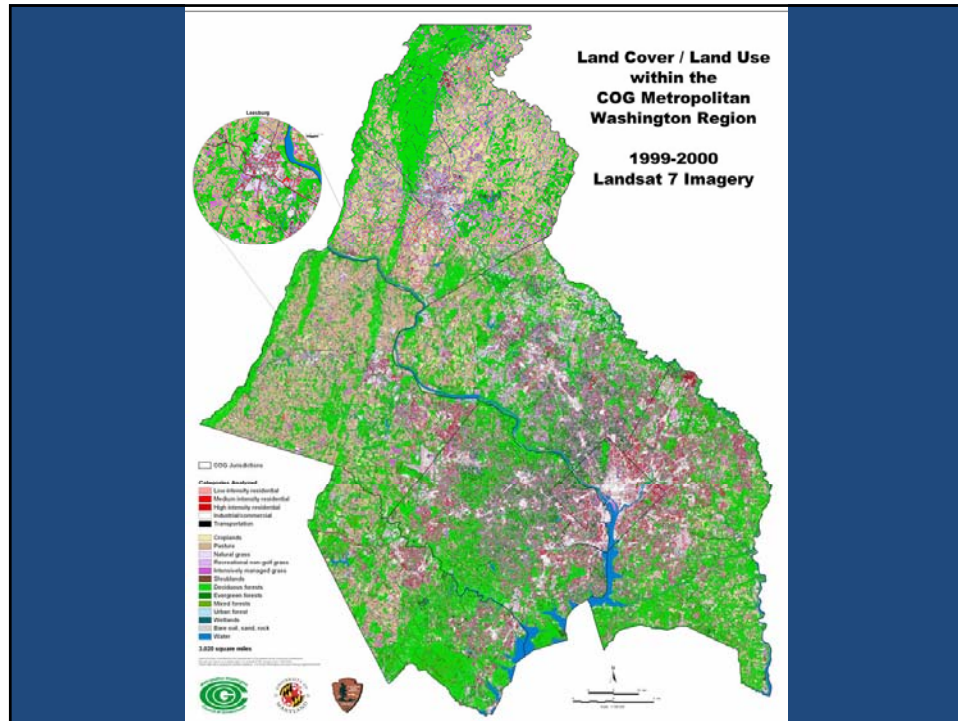


## The Trend

- Population growth in the COG region projected to grow 24% from 4.5 to 5.6 million by 2030.
- Conservatively the region is losing at least 28 acres per day (16 mi<sup>2</sup>/yr) of open space.\* (*Losing the equivalent land cover area of DC every four years*)
- Funding for major park acquisition programs is expensive and generally not growing.

\* Source: Margaret Maizel One Image, LLC—Green More or Less (Washington Post).

Slide Credit: Brian LeCouteur - MWCOG



## The Challenge of the Regional Tree Canopy Working Group

*In what ways can the region accommodate growth while maintaining and enhancing forests and tree canopy and other green infrastructure?*

- Preserving forest cover, parkland and open space
- Elevate the value of forests / forest cover in local and regional planning .

*Slide Credit: Brian LeCouteur - MWCOG*

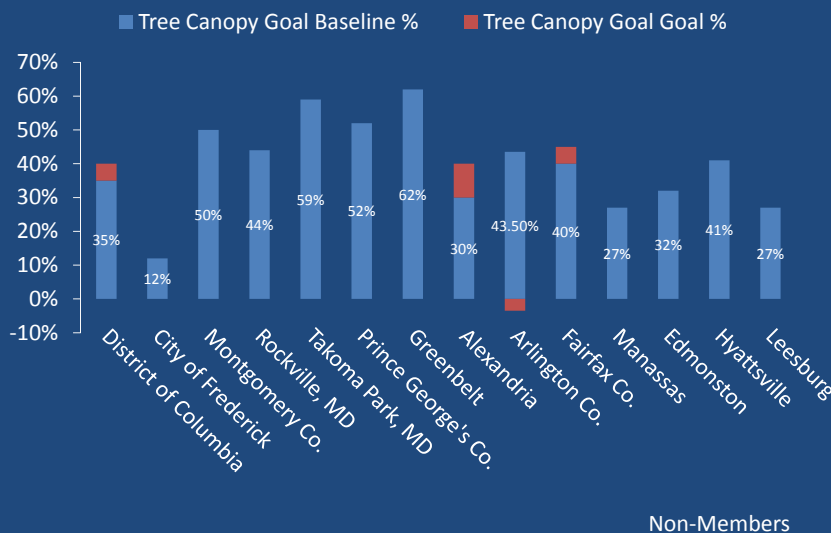
## The Strategy

- Land Use Planning and Regulation (including dedicated forested lands or districts)
- Landowner Education
- Maintaining Forest Health
- Funded Annual Reforestation Programs (Tracking, database management, etc.)
- Management of Exotic and Invasive Plants
- Management of Nuisance Wildlife Species (Deer, Voles, Beaver)

Slide Credit: Brian LeCouteur - MWCOG

13

## Percent Tree Canopy and Goal



# Questions

**For more  
information  
contact:**

Brian LeCouteur  
[blecouteur@mwkog.org](mailto:blecouteur@mwkog.org)