

A REGION UNITED: GOALS & ACTIONS FOR 2030

Metropolitan Washington Planning Framework to Advance Equity, Transportation, Housing, and Climate Goals

Chuck Bean
COG Executive Director

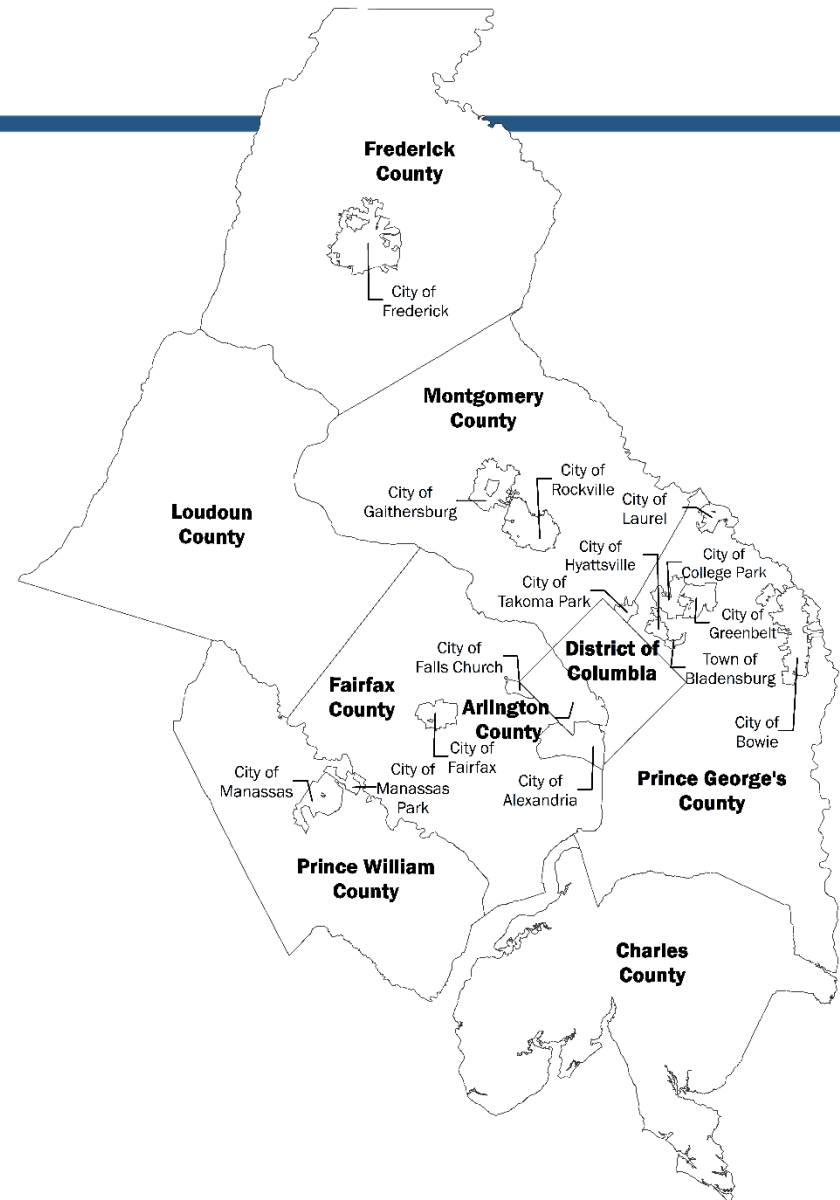
Chief Equity Officers Committee
February 24, 2022



Metropolitan Washington
Council of Governments

About COG

- An independent, nonprofit association founded in 1957.
- Brings area leaders together to address regional issues.
- 300 elected officials from 24 local governments, the Maryland and Virginia state legislatures, and U.S. Congress.
- 125+ staff



Region Forward Vision



Regional Mojo

Over the last decade, our region's achievements include:

- Unprecedented cooperation on economic development
- Historic investments in transit
- National recognition for walkable communities
- Significant air quality improvements



COG Board Planning Priorities

If the challenges are interrelated, so are the solutions.

1. Housing Targets (2019)
2. Climate Goal & Action Plan (2020)
3. High-Capacity Transit Station Areas (2021)
4. Equity Emphasis Areas (2021)

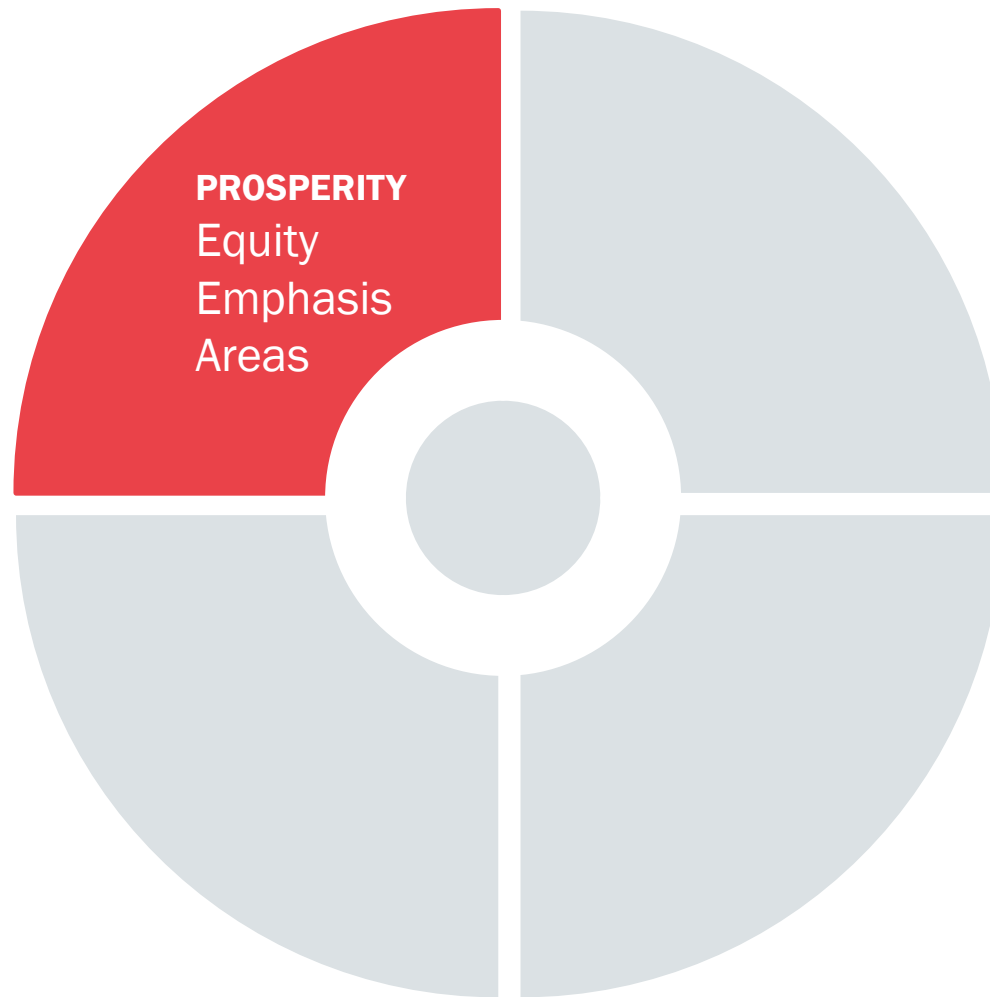


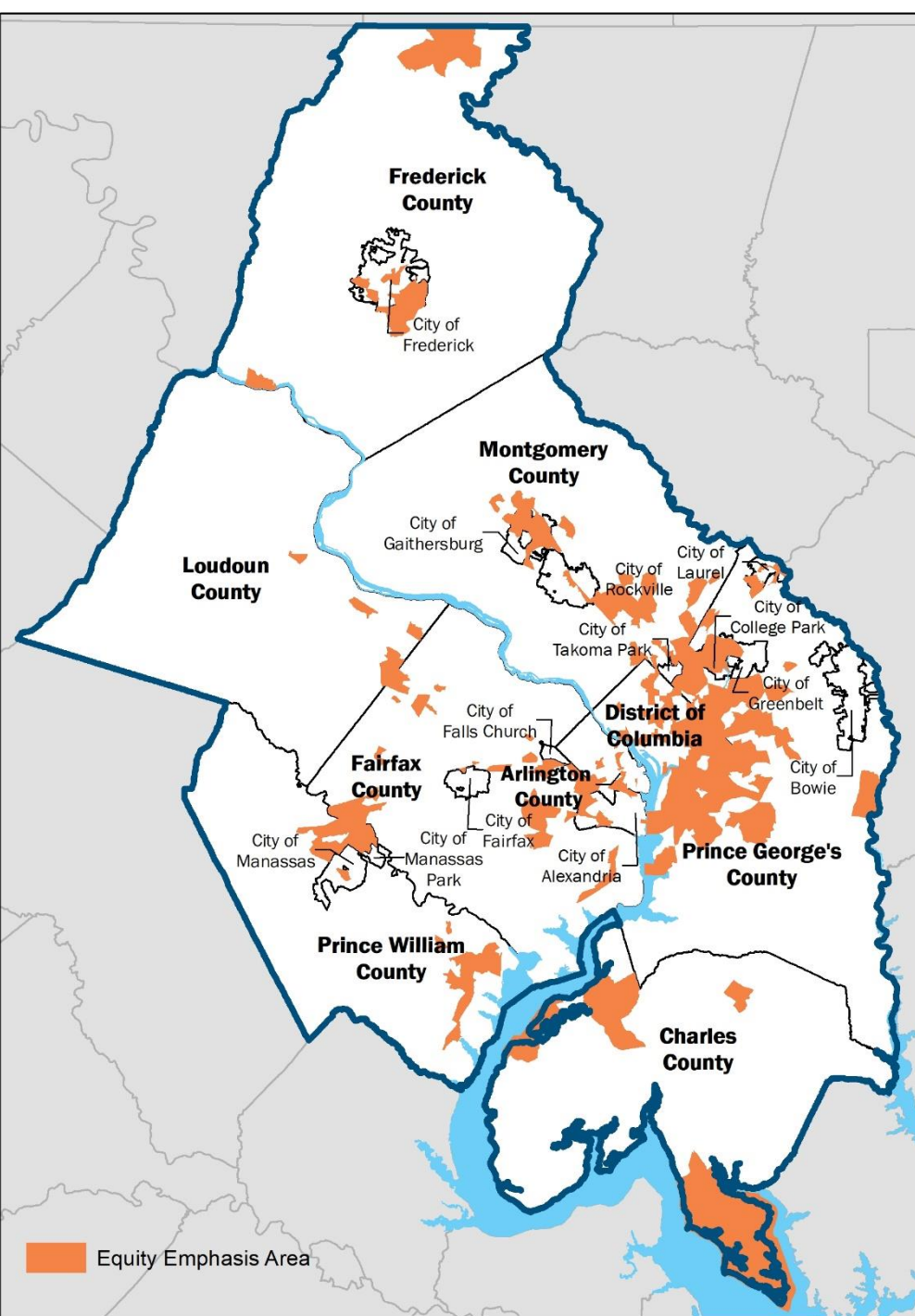
West Falls Church rendering (WMATA)

Framework for 2030



Advancing Shared Prosperity





Elevate 350 Equity Emphasis Areas (EEAs)

Areas with high concentrations of underserved residents.

mwcog.org/equityemphasisareas

EEAs Located Regionwide



Gaithersburg (Dave McKenzie/[Flickr](#)); 11th Street Bridge Park (Elvert Barnes/[Flickr](#)); Columbia Pike (BeyondDC/[Flickr](#))

EEAs Located Regionwide

- Nearly **30 percent** of the region's population resides within EEAs.

Equity Emphasis Areas per Jurisdiction					
TPB Planning Area Jurisdiction	Number of EEAs	Total Population		Population within EEAs	
		#	%	#	%
District of Columbia	97	692,625	12.4%	373,236	24.0%
Charles County	5	159,428	2.9%	17,979	1.2%
Frederick County	9	251,422	4.5%	40,271	2.6%
Montgomery County	49	1,043,530	18.7%	259,093	16.6%
Prince George's County	103	908,670	16.3%	413,340	26.5%
Maryland Subtotal	166	2,363,050	42.3%	730,683	46.9%
City of Alexandria	9	157,613	2.8%	45,274	2.9%
Arlington County	12	233,460	4.2%	47,013	3.0%
Fairfax County	43	1,145,857	20.5%	215,246	13.8%
City of Fairfax	0	23,531	0.4%	0	0.0%
City of Falls Church	0	14,128	0.3%	0	0.0%
Loudoun County	5	395,134	7.1%	27,437	1.8%
City of Manassas	1	41,174	0.7%	7,609	0.5%
City of Manassas Park	1	16,986	0.3%	7,291	0.5%
Prince William County	17	467,886	8.4%	103,940	6.7%
Fauquier Co. UZA portion	0	35,928	0.6%	0	0.0%
Virginia Subtotal	88	2,531,697	45.3%	453,810	29.1%
Total	351	5,587,372	100.0%	1,557,729	100.0%

Cross-cutting: Broader EEAs Application

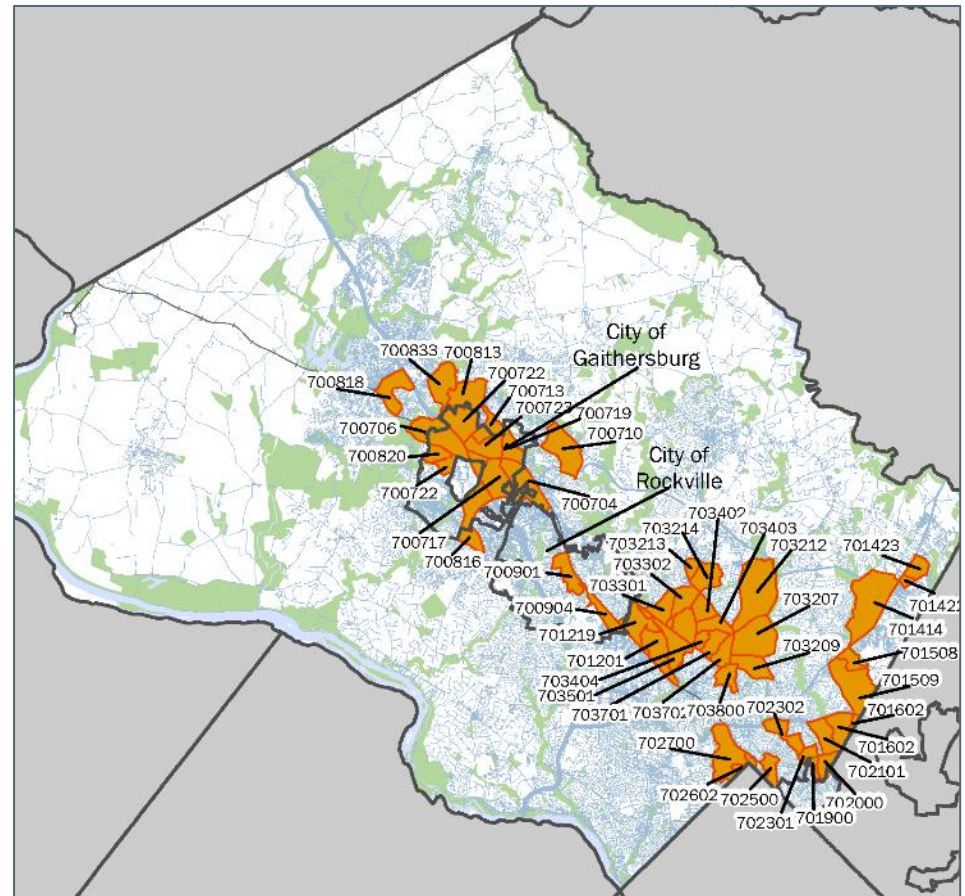
- EEAs to be used broadly in local/regional planning activities:
 - Housing
 - Community Planning
 - Health
 - Public Safety
 - Transportation
 - Climate and Energy
 - Education
 - Economic Opportunities



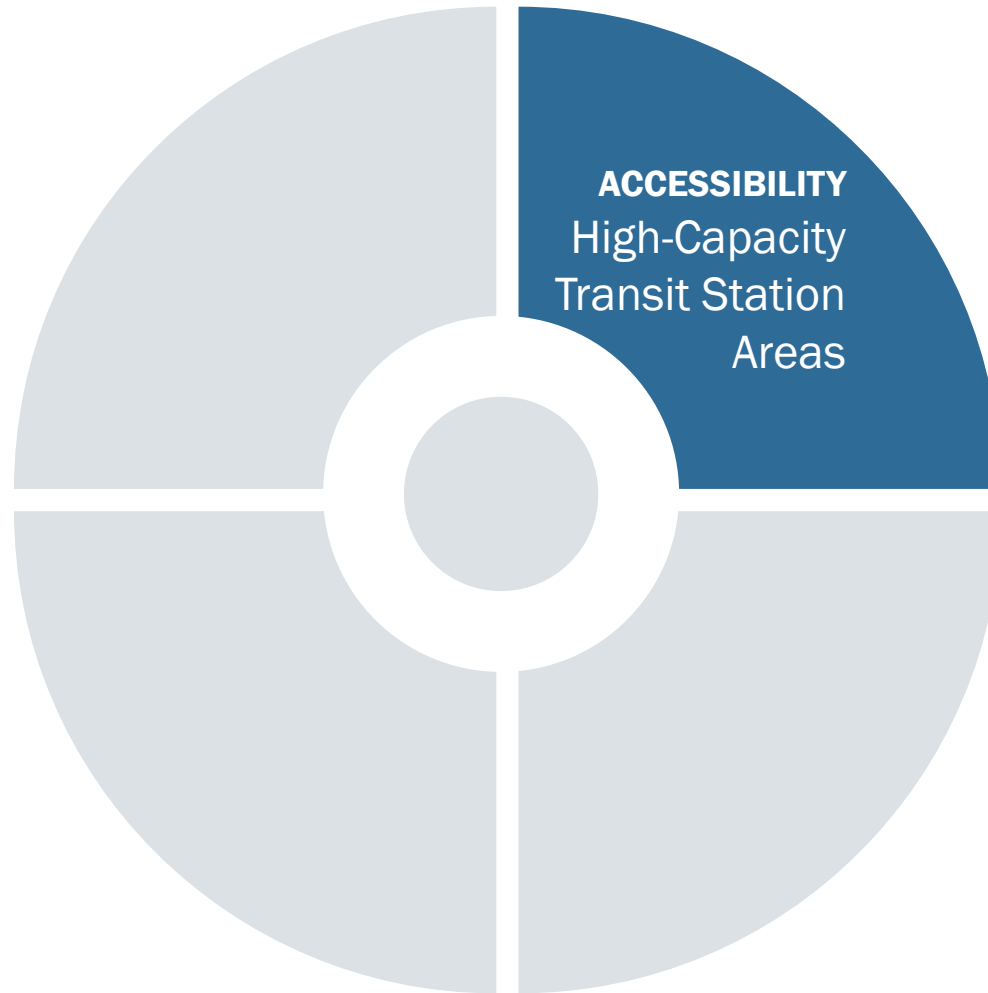
Virginia Commonwealth University: Health Equity Brief for COG

EEAs/Montgomery County

- Montgomery County application of EEAs
 - Council endorsement as planning concept
 - CIP budget – prioritizes projects
 - Green Bank
 - Shovel Our Sidewalks Act
 - Transit access planning (Purple Line)



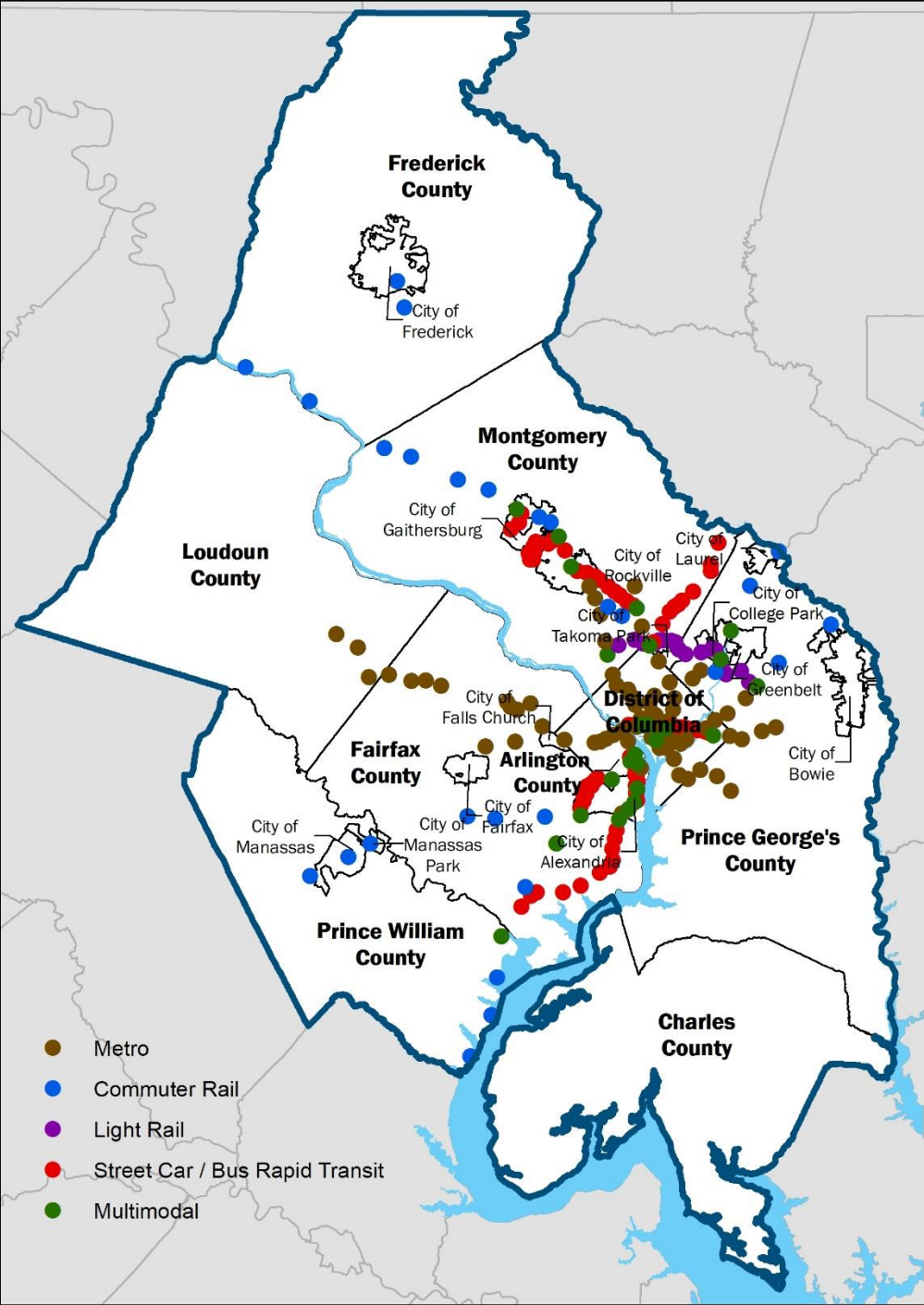
Advancing Accessibility



Optimize 225 High-Capacity Transit Station Areas (HCTs)

Locations around Metrorail, Commuter Rail, Light Rail, Bus Rapid Transit (BRT), and Streetcar.

mwcog.org/highcapacitytransit



HCTs Located Regionwide



Wheaton Metro (WMATA); Route 1/Richmond Highway (COG); DC Streetcar (BeyondDC/[Flickr](#))



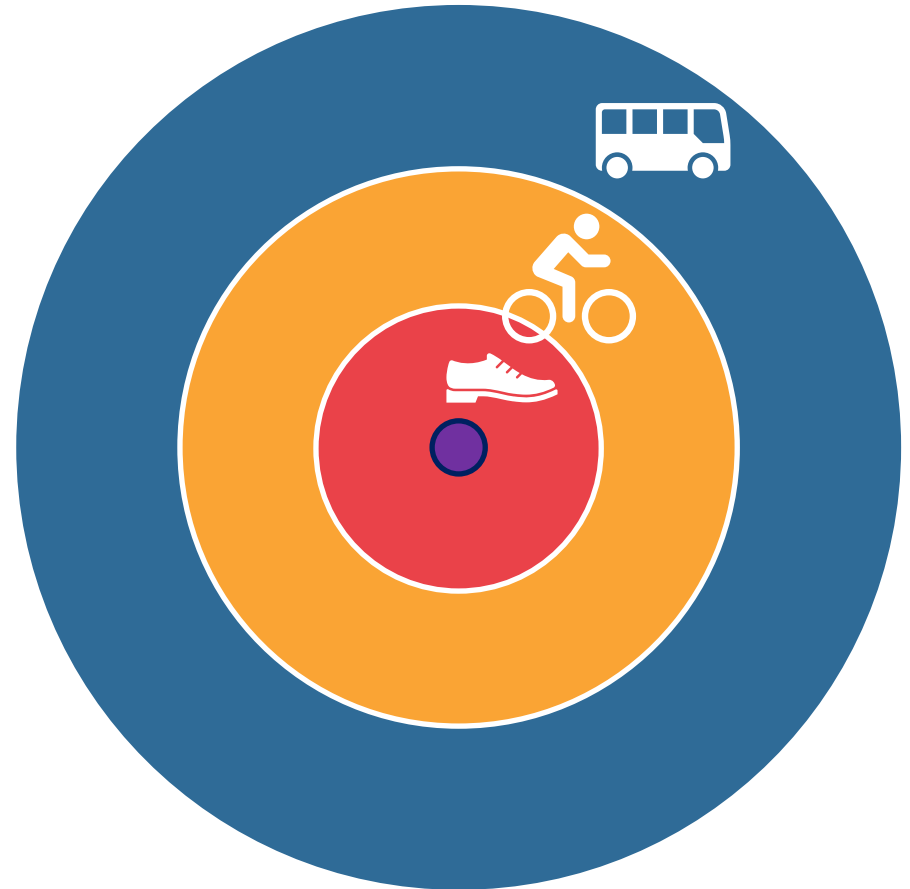
HCTs by Jurisdiction/Mode

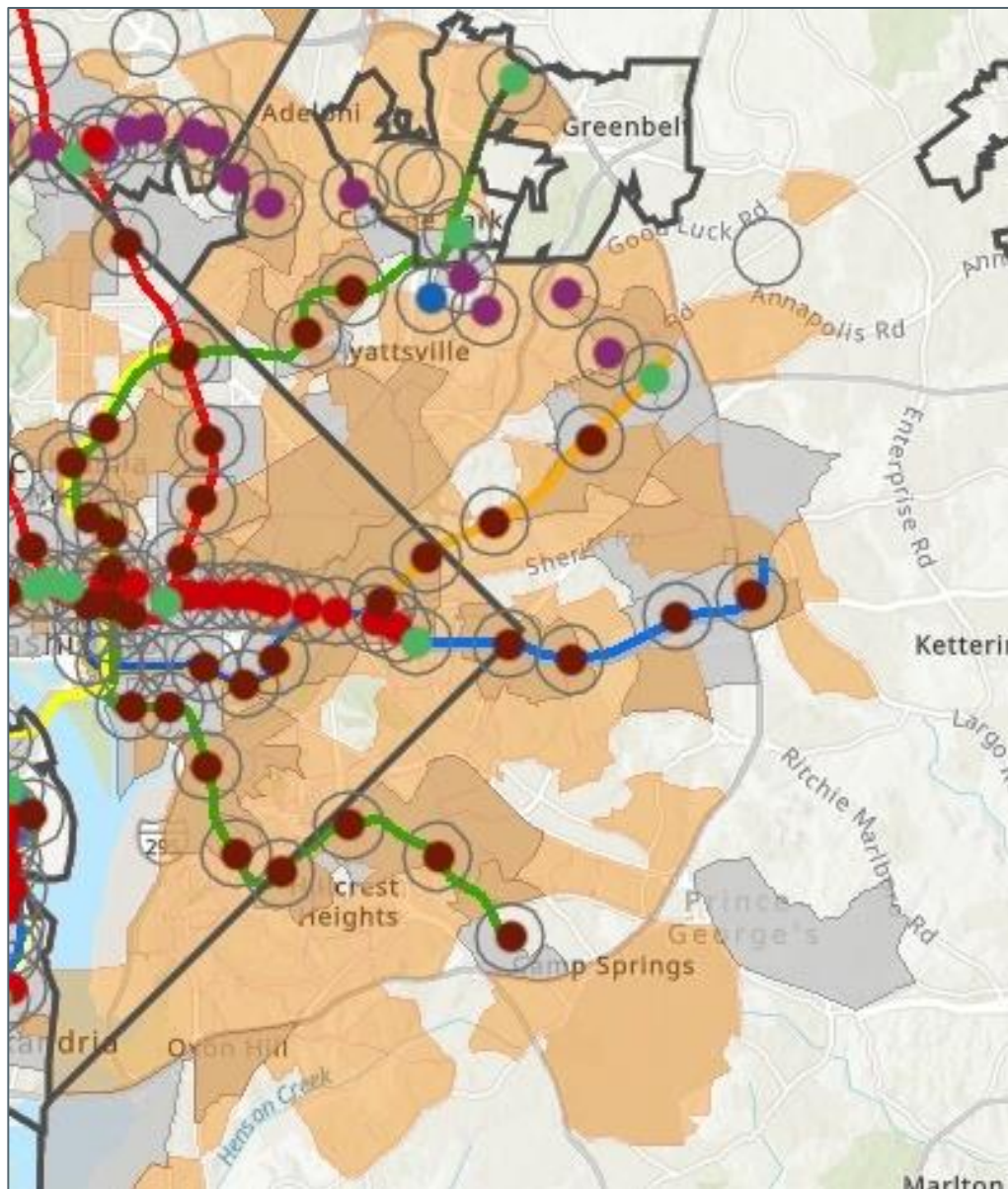
JURISDICTION	Total	Commuter Rail	Light Rail	Metro Rail	Multi System	Streetcar / BRT
City of Alexandria	21			1	4	16
Arlington County	19			8	3	8
City of College Park	5		3		2	
District of Columbia	55			34	6	15
Fairfax County	29	4		11	3	11
Frederick County	3	3				
City of Frederick	1	1				
City of Gaithersburg	6	1			1	4
City of Greenbelt	1				1	
City of Laurel	1	1				
Loudoun County	3				3	
City of Manassas	1	1				
City of Manassas Park	1	1				
Montgomery County	46	7	8	5	4	22
Prince George's County	23	4	6	12	1	
Prince William County	5	4			1	
City of Rockville	7	1			1	5
City of Takoma Park	1		1			
Regional Total	225*	27*	17*	75*	26*	80*

* The Greenbelt, Takoma/Langley Transit Center and Van Dorn HCTs are located on jurisdictional boundaries. The Greenbelt HCT is in the cities of Greenbelt and College Park, Takoma/Langley Transit Center HCT is in the City of Takoma Park and Prince George's County and Van Dorn Street HCT is in the City of Alexandria and Fairfax County. These stations appear in their respective jurisdictional totals but are not double counted in the regional totals. (Updated January 3, 2022)

Optimize HCTs = Transit-Oriented Communities

- Enhance land use around stations:
 - Housing, offices, and shopping.
- Improve access to stations and nearby amenities:
 - Pedestrian and bicycle projects.
 - Bikeshare, e-scooter.
 - Microtransit services.



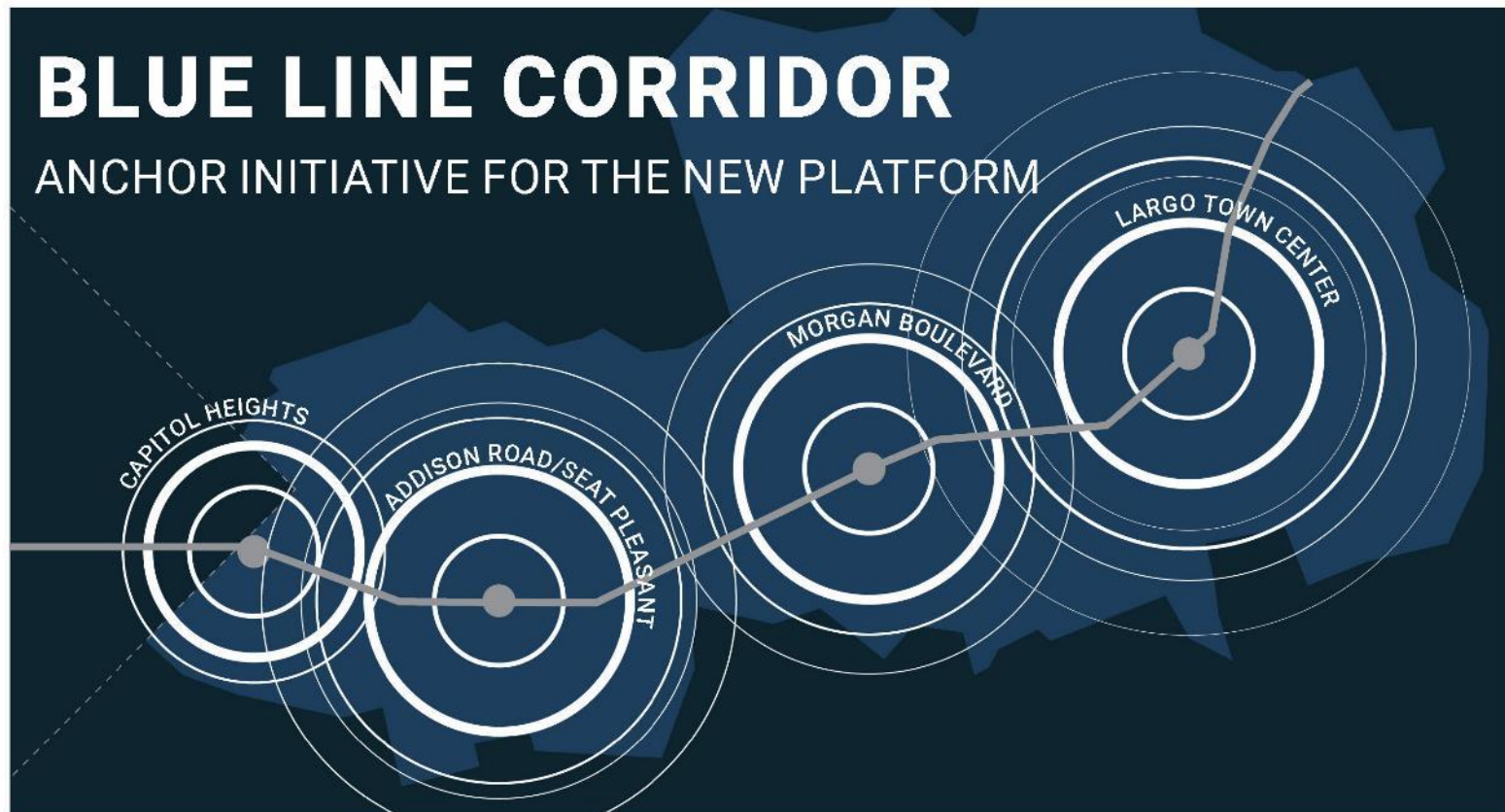


Cross-cutting: Transit & Equity

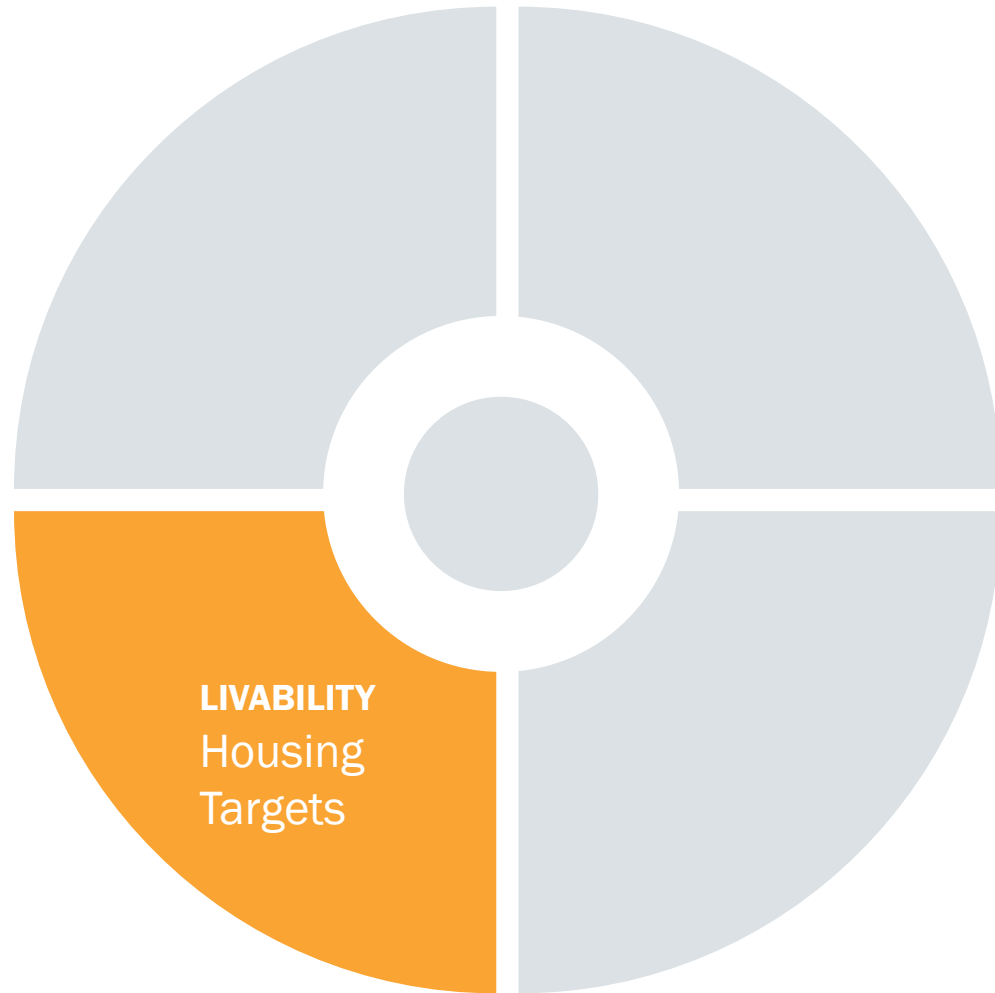
Many HCTs (168) overlap with an Equity Emphasis Area.



HCTs/Prince George's County

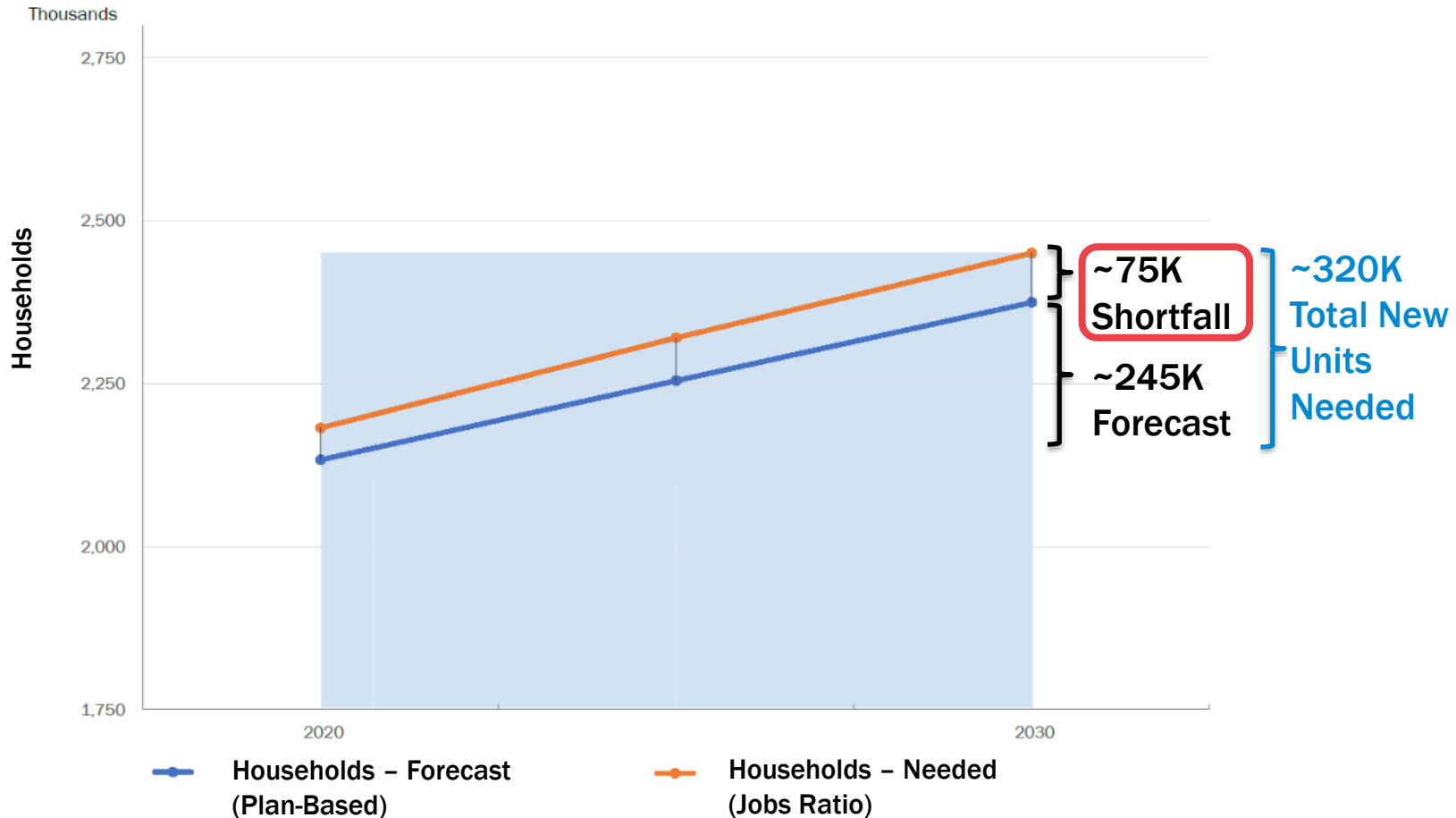


Advancing Livability



Housing Needs, 2020-2030

COG REGIONAL HOUSING NEEDS (AMOUNT)
Planned vs. Estimated (Need)



Regional Housing Targets

Regional Target 1:

AMOUNT

At least 320,000 housing units should be added in the region between 2020 and 2030. This is an additional 75,000 units beyond the units already forecast for this period.

Regional Target 2:

ACCESSIBILITY

At least 75% of all new housing should be in Activity Centers or near high-capacity transit.

Regional Target 3:

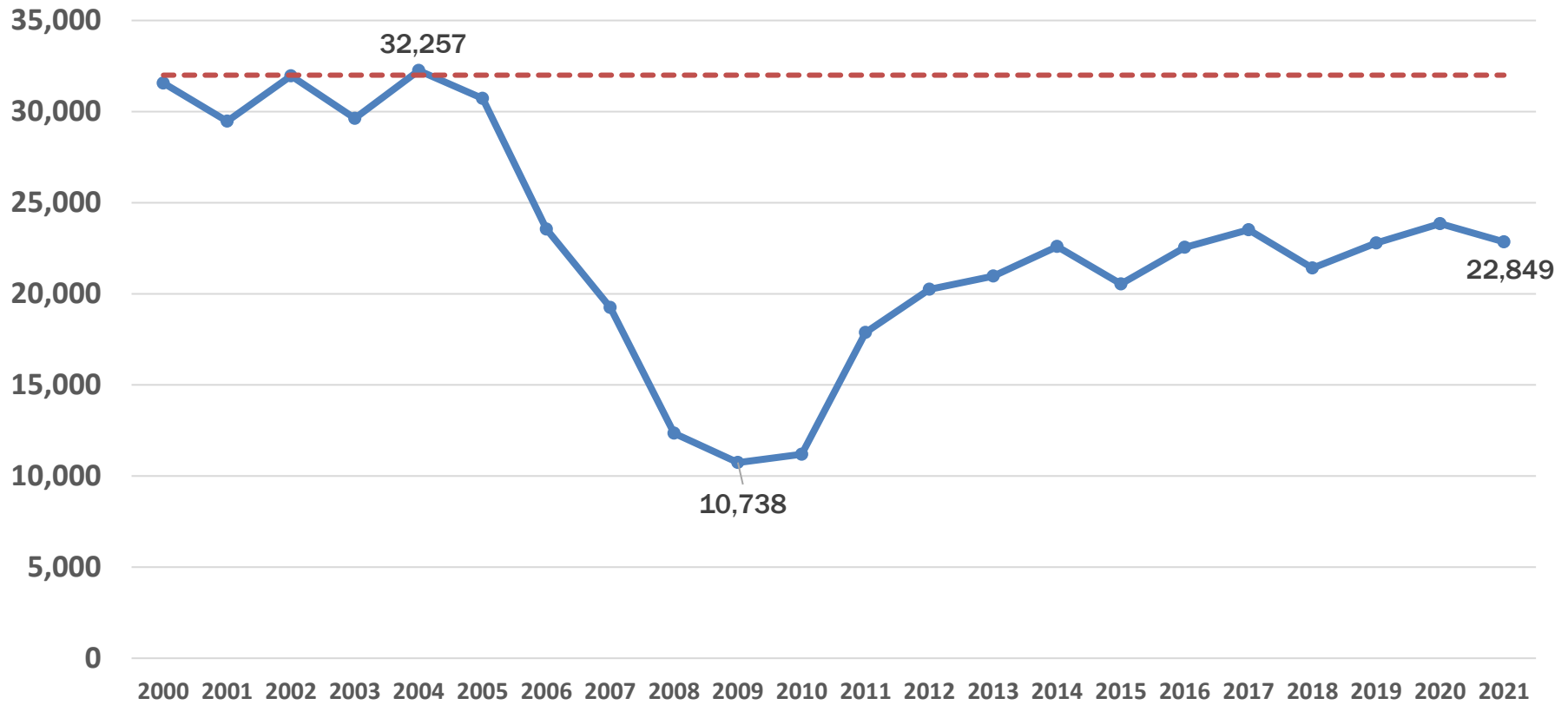
AFFORDABILITY

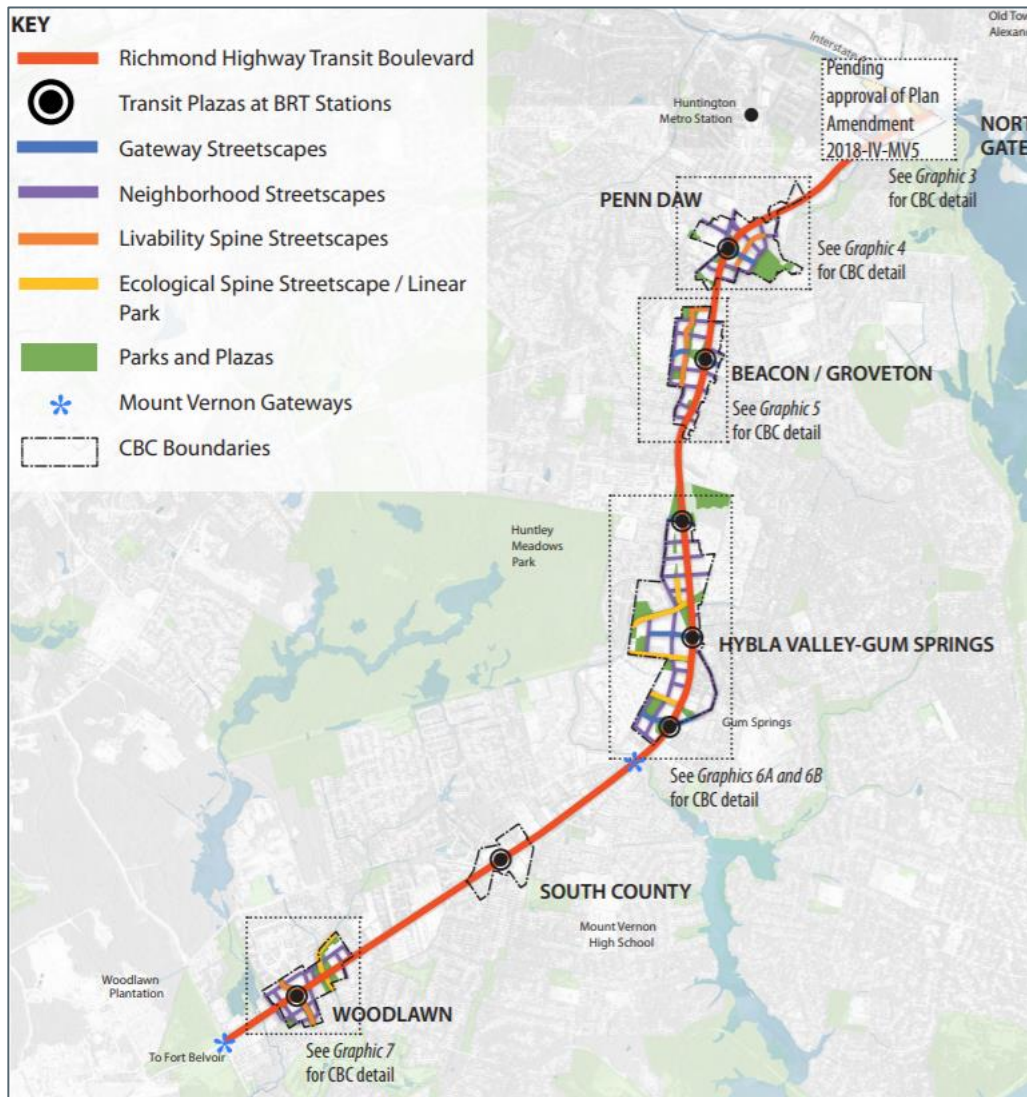
At least 75% of new housing should be affordable to low- and middle-income households.



The region still needs more housing

Total Housing Units Authorized by Building Permits
by Year In Metropolitan Washington





Embark Richmond Highway/Fairfax County

Cross-cutting: Transit, Equity, & Housing

Fairfax County

Fort Belvoir and
Embark Richmond Highway

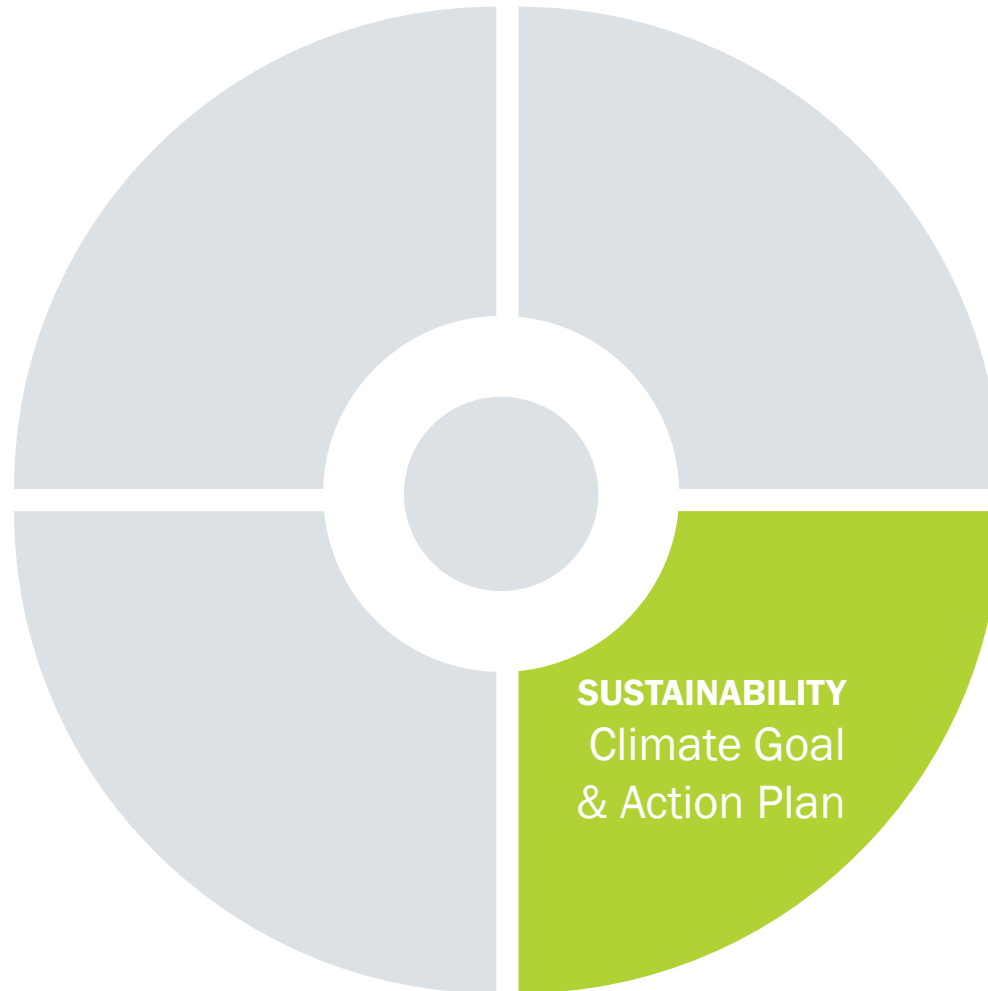
Housing Targets/D.C. & Alexandria

- District of Columbia
 - Mayor's Order on housing – 36K new units by 2025
- City of Alexandria
 - Adoption of regional share of housing targets - 11,500 new units by 2030



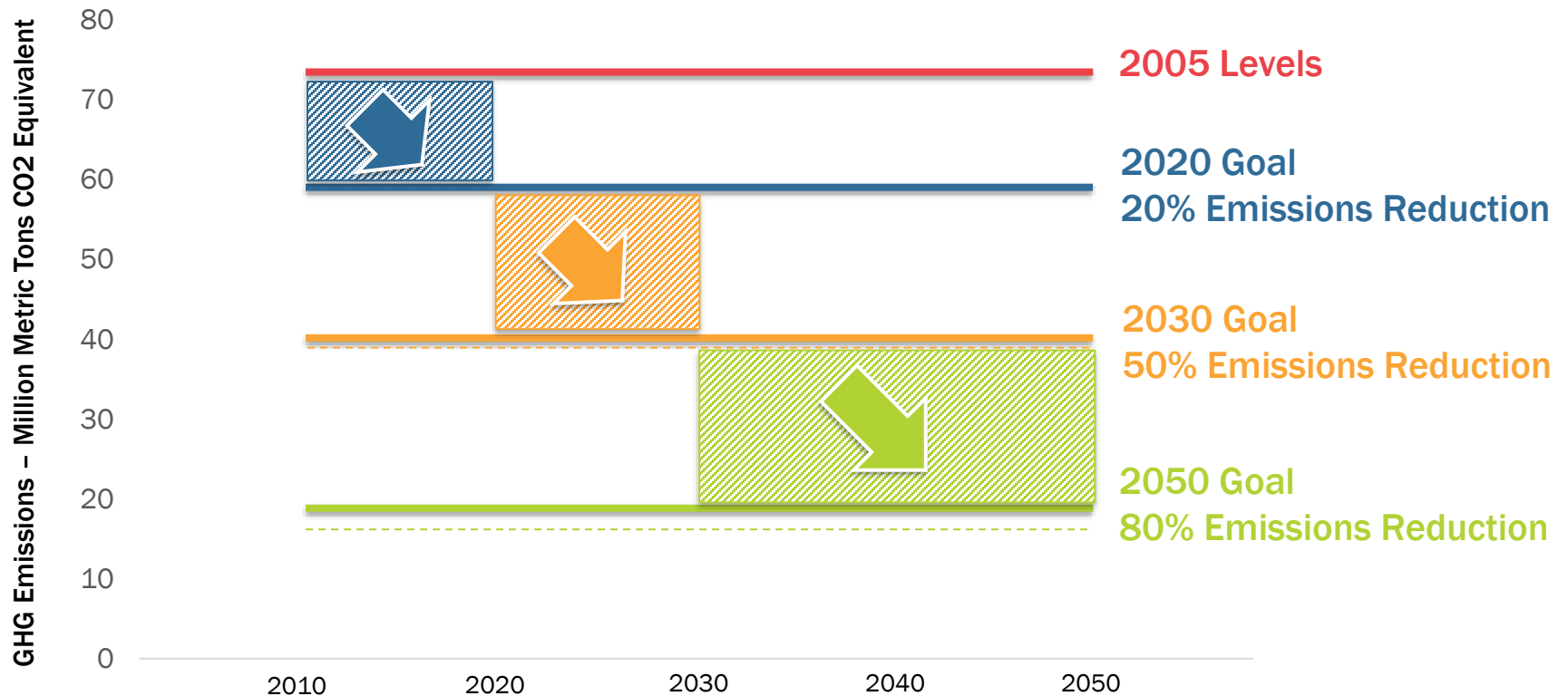
H Street NE (Ted Eytan/Flickr)

Advancing Sustainability



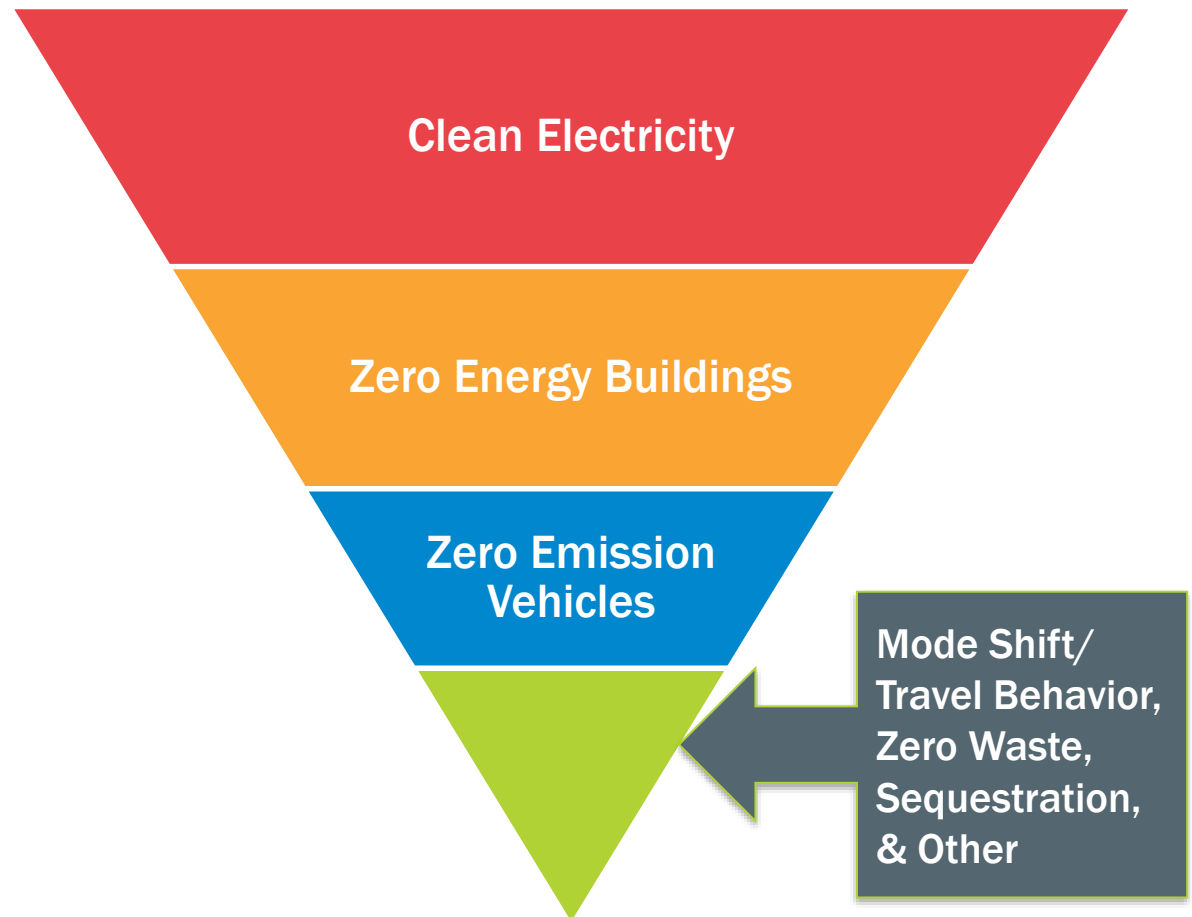
Regional Climate Goals

Metropolitan Washington GHG Reduction Goals



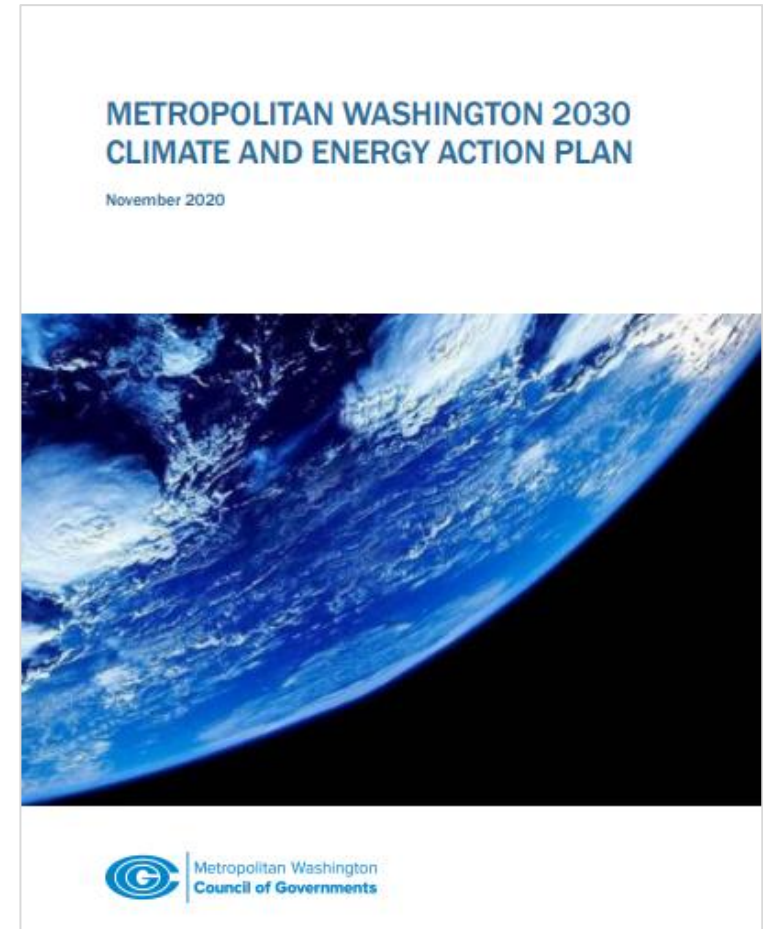
What would it take to meet the 2030 goal?

- Scenarios analyzed in *2030 Climate and Energy Action Plan*.
- Clean Electricity, Zero Energy Buildings and Zero Emission Vehicles account for most potential emission reductions.
- Action needed by all levels of government.

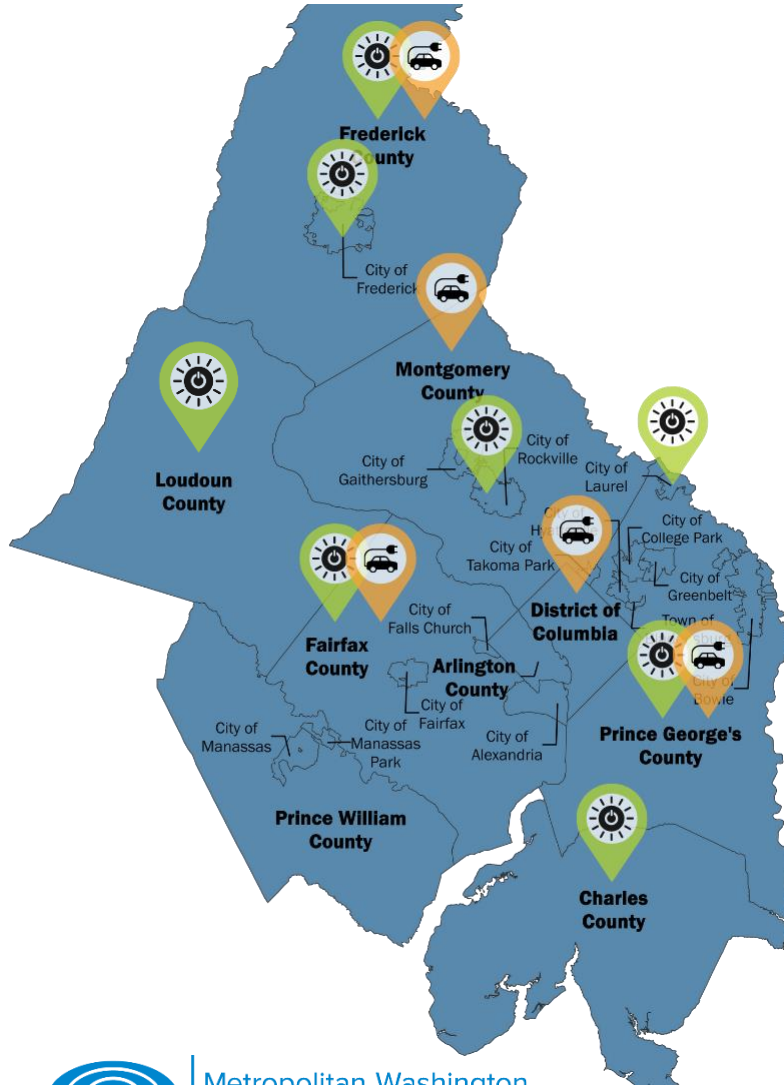


Cross-cutting: Climate, Equity, Transit, and Housing

- *2030 Climate and Energy Action Plan* identified equity-focused actions the region must take in pursuit of its climate goals.
 - Prioritizing sustainable energy access for all residents.
 - Increased transit use and fewer solo drivers.
 - More housing options that use less energy.



Supporting Local Climate/Energy Action



- COG helping governments, agencies develop climate and energy action plans.
- COG coordinating local/regional electric vehicle and zero emission fleet plans & policies.



Accelerating Action

- Targeted Grants/Technical Assistance
 - Housing Affordability Planning Program; Transit Within Reach; Transportation Land-Use Connections (TLC) Program.
 - Climate/energy planning; Zero emission vehicles coordination.
- Forward-focused Strategies
 - Climate and Energy Action Plan; Housing Equity Plan; Visualize 2045 Aspirational Initiatives.
- Maps/Tools/Professional Development
 - Maps and data; Housing Messaging Playbook; Climate Partners website; Racial equity professional development.

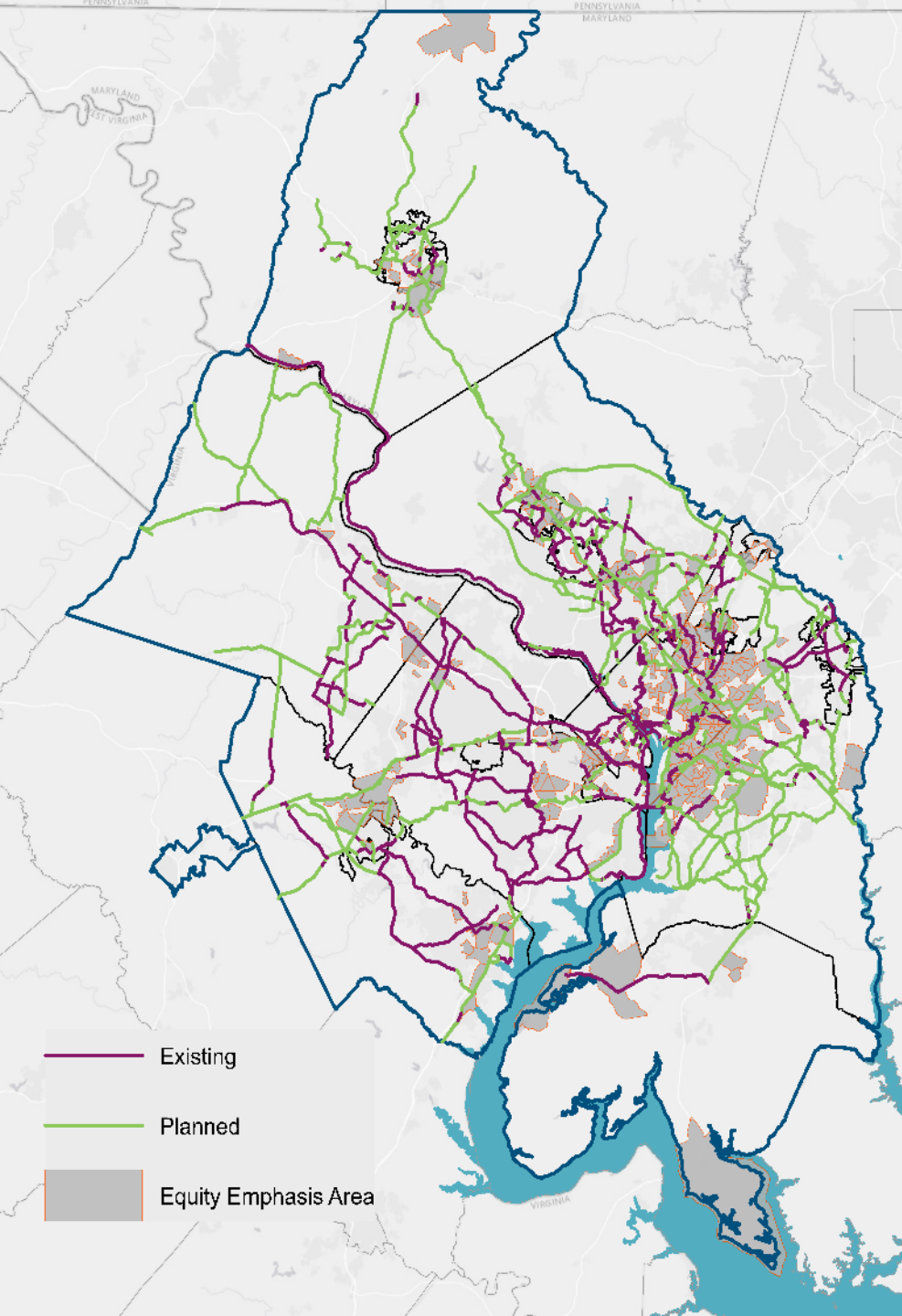
Housing Affordability Planning Program

- Made possible with \$500,000 from Amazon Housing Equity Fund.
- \$75,000 grants to local governments and non-profit developers engaged in affordably-priced housing near transit.
 - Toward design work, feasibility studies, and zoning analyses to help jumpstart developments.



National Capital Trail Network (NCTN)

- Long-distance, off-street trails accessible for people of all ages and abilities and suitable for both transportation and recreation.
- 180 of 225 HCTs are within half a mile.
- 55% of the network is unbuilt.



Bipartisan Infrastructure Bill

- Region to receive about \$20B/5 years.
 - \$3B (DC), \$7.6B (MD) and \$9.7B (VA)
- Additional \$30B available - competitive grant programs that our members individually, or collectively thru COG/TPB, can pursue.
- Alignment with COG framework - climate and equity goals.



VRE at Potomac River (Leandro Neumann Ciuffo/Wikimedia Commons)

Chuck Bean

COG Executive Director

(202) 962-3260

cbean@mwcog.org

777 North Capitol Street NE, Suite 300

Washington, DC 20002

[mwcog.org/2030 framework](https://mwcog.org/2030-framework)



Metropolitan Washington
Council of Governments