



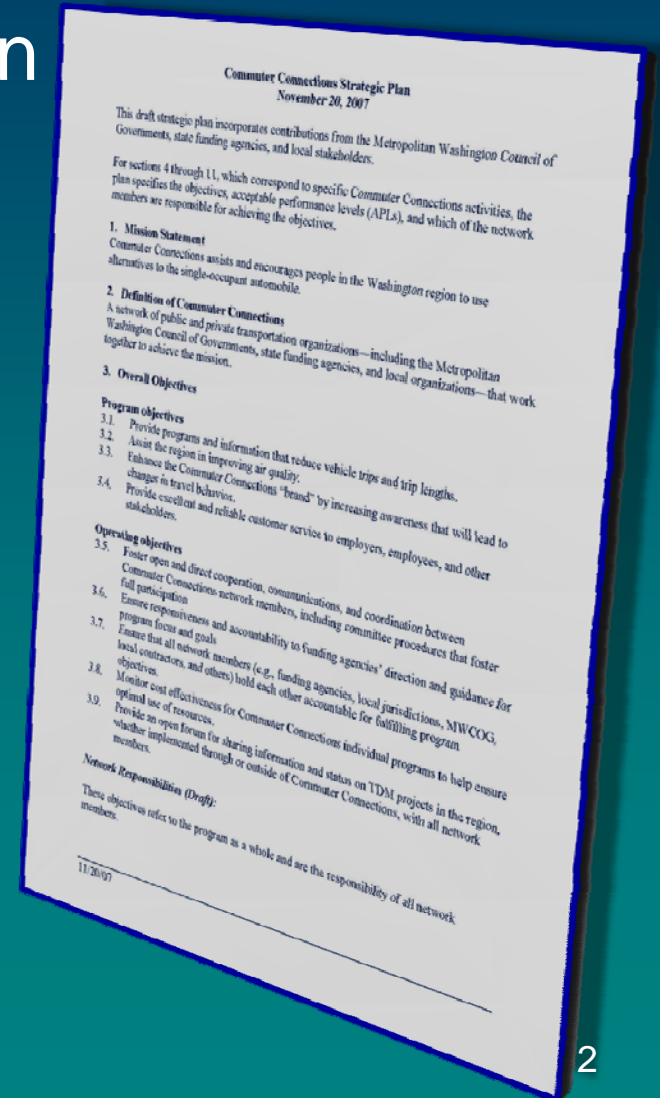
# Commuter Connections FY 2011 Work Program

---

TPB Technical Committee  
February 5, 2010

## Definition from Strategic Plan

- Network of public and private transportation organizations, including COG, state funding agencies, and local organizations, that work together to assist and encourage people in the Washington region to use alternatives to the single-occupant automobile.



# Benefits of Commuter Connections



## ■ Jurisdictions

- Helps reduce and manage commuter congestion, goods movement, tourist travel
- Helps reduce emissions
- Supports local efforts to attract and retain employers

## ■ Employers

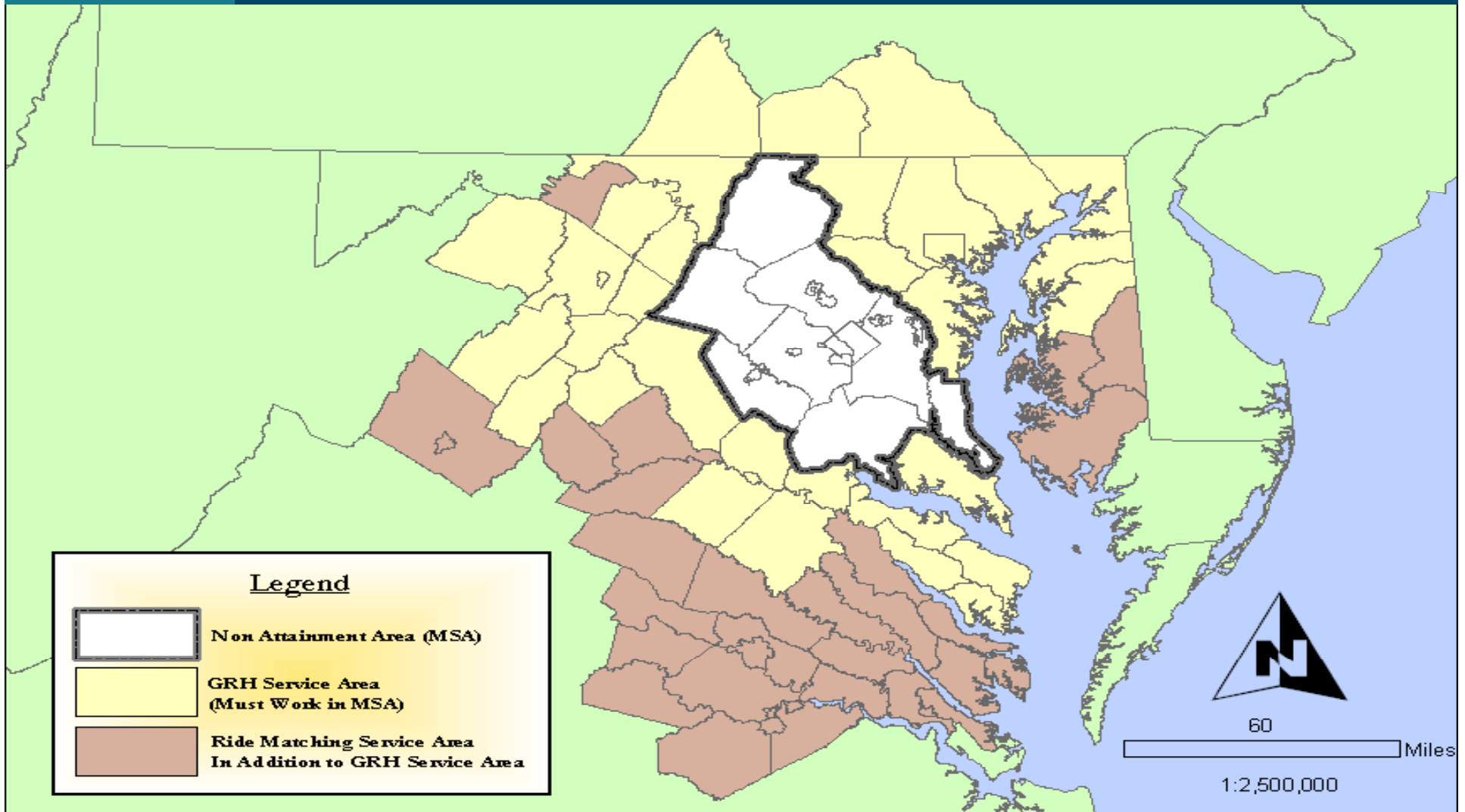
- Recruitment/Retention

## ■ Workers

- More commute options
- Reduced stress/costs/time
- Improved quality of life



# Geographic Areas Serviced by Commuter Connections



## Benchmarking Carpooling -- Census Rankings for Carpools



Metropolitan Statistical area	Workers Carpooled	Total Workers	% Carpool
LA/Long Beach	690,500	6,000,057	11.5%
NYC/Long Island/N NJ/PA	663,286	9,080,260	7.3%
Chicago/Naperville/Joliet	422,827	4,627,103	9.1%
Dallas/Ft. Worth/Arlington	369,641	3,117,005	11.9%
Houston Metro Area	350,337	2,762,378	12.7%
<b>Washington DC Metro</b>	<b>319,052</b>	<b>2,893,548</b>	<b>11.0%</b>
Atlanta Metro Area	299,215	1,980,966	11.3%
Phoenix-Mesa	262,505	1,466,000	13.3%
Riverside-San Bern.	240,584	1,728,020	13.9%
San Francisco-Oakland	224,906	2,137,930	10.5%

# Commuter Connections Daily Program Impacts



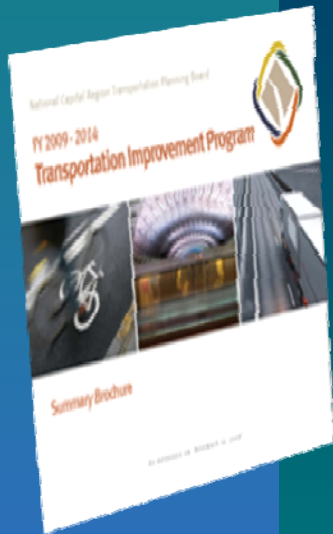
Measure	Reductions
Vehicle Trips	113,000
Vehicle Miles of Travel	2,300,000
Nitrogen Oxides (NOx)	1.0 Tons
Volatile Organic Compounds (VOC)	0.5 Tons

# Commuter Connections' Role in the Regional Planning Process

- The TPB is required by Federal regulations to approve a congestion management process which includes TDM as part of the metropolitan transportation plan.
  - Commuter Connections constitutes the major demand management component of the region's congestion management process.



# Commuter Connections' Role in the Regional Planning Process



- Commuter Connections also provides transportation emission reduction measure (TERM) benefits for inclusion in the air quality conformity determination approved by the TPB. This is part of the annual update of the region's Constrained Long Range Plan (CLRP) and Transportation Improvement Program (TIP).





# Commuter Connections' Role in the Regional Planning Process

- Commuter Connections programs may be needed to meet Climate Change and Green House Gas emission targets that may be set for the transportation sector in the region.



# Cost Effectiveness of Commuter Connections

- Cost per Vehicle Trip Reduced \$0.15
- Cost per Vehicle Mile of Travel Reduced \$0.01
- Cost per ton of NOx Reduced \$16,000
- Cost per ton of VOC Reduced \$28,000



# Proposed FY 2011 CCWP Budget

<b>Program</b>	<b>Cost FY10</b>	<b>Cost FY11</b>
Commuter Operations	\$419,032	\$431,966
GRH	\$584,443	\$604,898
Mass Marketing	\$2,520,933	\$2,410,466
Program Evaluation	\$800,000	\$436,490
Employer Outreach	\$794,695	\$473,425
Telework	\$81,063	\$81,063
<b>TOTAL</b>	<b>\$5,200,166</b>	<b>\$4,438,288</b>

# Proposed FY 2011 CCWP Budget

- Overall 15% decrease from FY 2010
- Budget Breakdown: \$4,438,288
  - **COG/TPB Staff & Overhead:** \$1,406,774 or 32% of the overall budget.
  - **Private Sector Services:** \$2,273,223 or 51% of the overall budget
  - **Local Jurisdiction Pass-Thru:** \$318,956 or 7% of the overall budget
  - **Direct Costs:** \$439,335 or 10% of the overall budget



# What's New In FY 2011 CCWP-continued



- Summary section updated with section titles (Funding, Planning Process Requirements, Description of Committees, Key Elements and Highlights)
- Program Background was updated to include most recent TERM impacts for transportation and emissions and cost effectiveness.
- “Products and Services” section in each project show the parties delivering the product and/or service.

# What's New In FY 2011 CCWP

- Each project has a tie in to a committee group relating to oversight. This is consistent with the Strategic Plan.
- Carpool Incentive Demonstration Project – may continue or expand based on FY 2010 Evaluation Results



# What's New In FY 2011 CCWP - continued

- Monitoring and Evaluation (con't)
  - 2010 State of the Commute Final Technical Report and draft General Public Report
  - Employer Telework Survey (MD and VA)
  - Employer Outreach analysis
  - Bike to Work Day Survey
  - Draft TERM Analysis Report



# Next Steps



- State funding agencies have provided initial comments/edits on Draft FY 2011 CCWP.
- Commuter Connections Subcommittee reviews draft CCWP on November 17<sup>th</sup> and a comment period will be established through December 4<sup>th</sup>.
- State funding agencies will review document and submitted comments in December and will provide additional comments by December 18 for final review and approval in January.
- A revised document will be available for the January Subcommittee for further review and endorsement for release.



# Next Steps - continued



- Tech Committee will receive a briefing of the Work Program at its February 5<sup>th</sup> meeting and will be briefed again on March 5th.
- TPB will receive draft of the FY 2010 CCWP at its February meeting and will release the CCWP for public comment. Will be asked to approve at its March meeting.
- TIP adjustments, if any, will be made and funding commitments secured by June.
- Program begins July 1.



Questions?

Nicholas W. Ramfos

Director, Commuter Connections

[nramfos@mwcog.org](mailto:nramfos@mwcog.org)

Or

202-962-3313