



# Developing the Ver. 2.3 travel model on the new zone system: Updated timeline

Presented to the Travel Forecasting Subcommittee  
September 18, 2009

Mark S. Moran  
Metropolitan Washington Council of Governments (COG)  
National Capital Region Transportation Planning Board (TPB)



# Updates since Sept. meeting: Air quality conformity determinations

- 2010 CLRP & FY 2011-2016 TIP
  - Was: January to July 2010
  - Now: March to October 2010
  - Announced at 11/6/09 Tech. Comm. meeting and 11/18/09 TPB meeting
- 2011 CLRP & FY 2012-2017 TIP
  - Still assumed to be: January to July 2011



# Updates since Sept. meeting: Preparing surveys

- 2007 Household Travel Survey
  - Completion date for cleaned survey and documentation slipped from mid Sept. to mid Nov. 2009
- 2008 Bus Survey
  - Completion date shifted from Sept. 2009 to April 2010



# Updates since Sept. meeting: Network development

- Completed in Oct. 2009
  - DCI/ArcGIS application to update transit and highway networks (TPBMAN)
  - Conflation of master highway network to NAVTEQ
- Following tasks are still on schedule
  - Code highway and transit networks using DCI/ArcGIS application on the new (3,722 TAZ) area system
    - Calibration (Year-2007) networks: End of Dec. 2009
      - Note that review of zone centroids by state and local governments is slated for Jan. 2010, so some work will have to be done in parallel.
    - Forecast (Year-2030 or 2040) networks: End of Feb. 2010



# Updates since Sept. meeting: Land activity forecasts

- Some delay in one item
  - Round 7.2 Coop. Forecast on existing TAZ system
    - Completed June 2009
  - Round 7.2a Coop. Forecast on existing TAZ system
    - Initially released: July 2009
    - Prepared for use in travel model: Aug. 2009
  - Round 7.2a Coop. Forecast on 3,722-TAZ system (area pro-ration), base year only
    - Oct. 2009 is now Dec. 2009
  - Round 8.0 Coop. Forecast on 3,722-TAZ system: Still on schedule for end of Jan. 2010



# Updates since Sept. meeting: Model calibration

- Due to delays in various precursors, the models calibration work has also been delayed
  - Was: Oct. 2009 to April 2010
  - Now: End of Dec. 2009 to August 2010



# Updates since Sept. meeting: Model testing and refinement

- Due to delays in various precursors, the models testing and refinement work has been delayed and shortened in duration
  - Was: Oct. 2009 to July 2010 (10 months)
  - Now: July 2010 to Nov. 2010 (5 months)



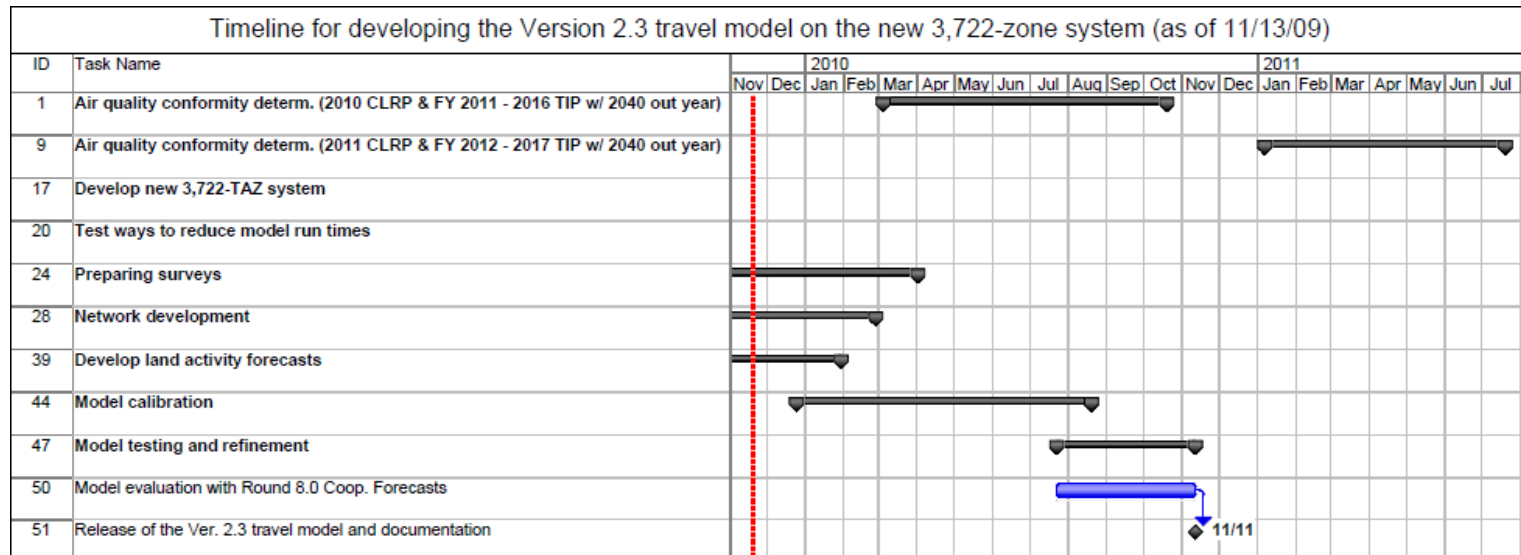
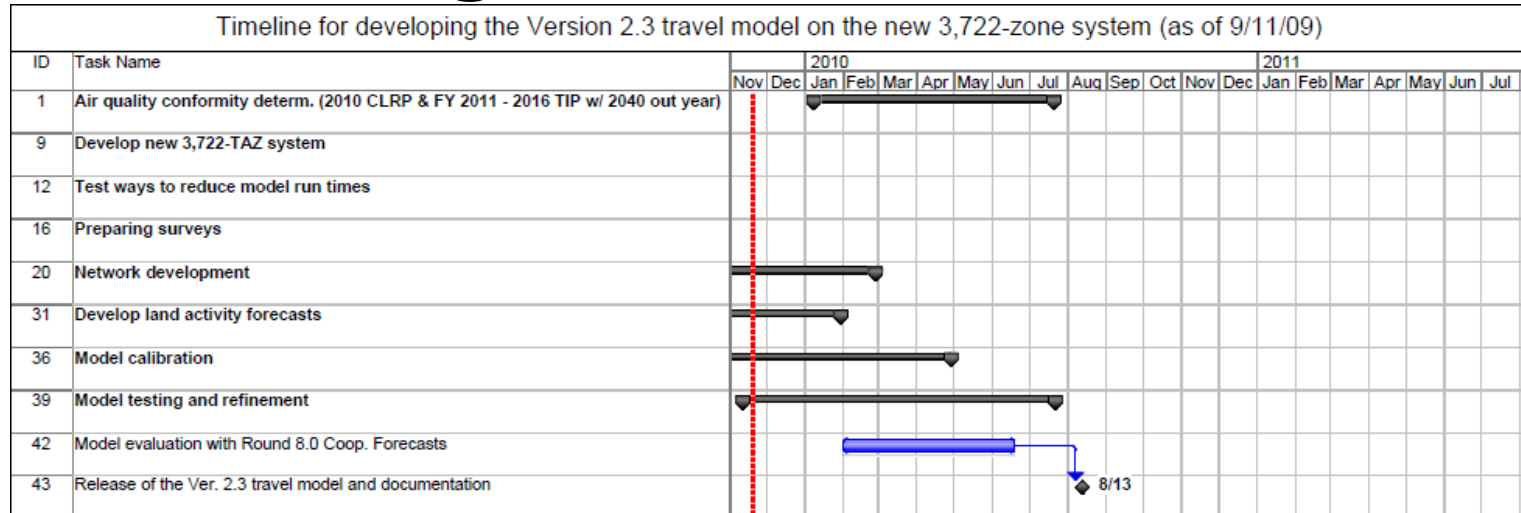
# Updates since Sept. meeting: Release of the Ver. 2.3 model on new zone system

- Was: Aug. 2010
- Now: Nov. 2010
- Despite this delay, the new model should still be ready in time for use in the 2011 air quality conformity determination (see next two slides)





# Changes in the timeline





# Detailed timeline

Timeline for developing the Version 2.3 travel model on the new 3,722-zone system (as of 11/13/09)

