

visualize2045

A LONG-RANGE TRANSPORTATION PLAN FOR THE NATIONAL CAPITAL REGION

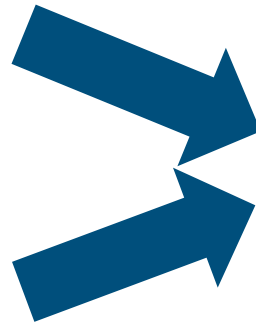
Document Outline and Timeline

Lori Zeller
Transportation Planner

Transportation Planning Board
March 23, 2018

Big changes from past practice

Financially Constrained Element
(formerly known as CLRP)



Seven Endorsed Initiatives
Unmet Needs (All-Build)

Long-Range Transportation Plan

visualize2045

A LONG-RANGE TRANSPORTATION PLAN FOR THE NATIONAL CAPITAL REGION



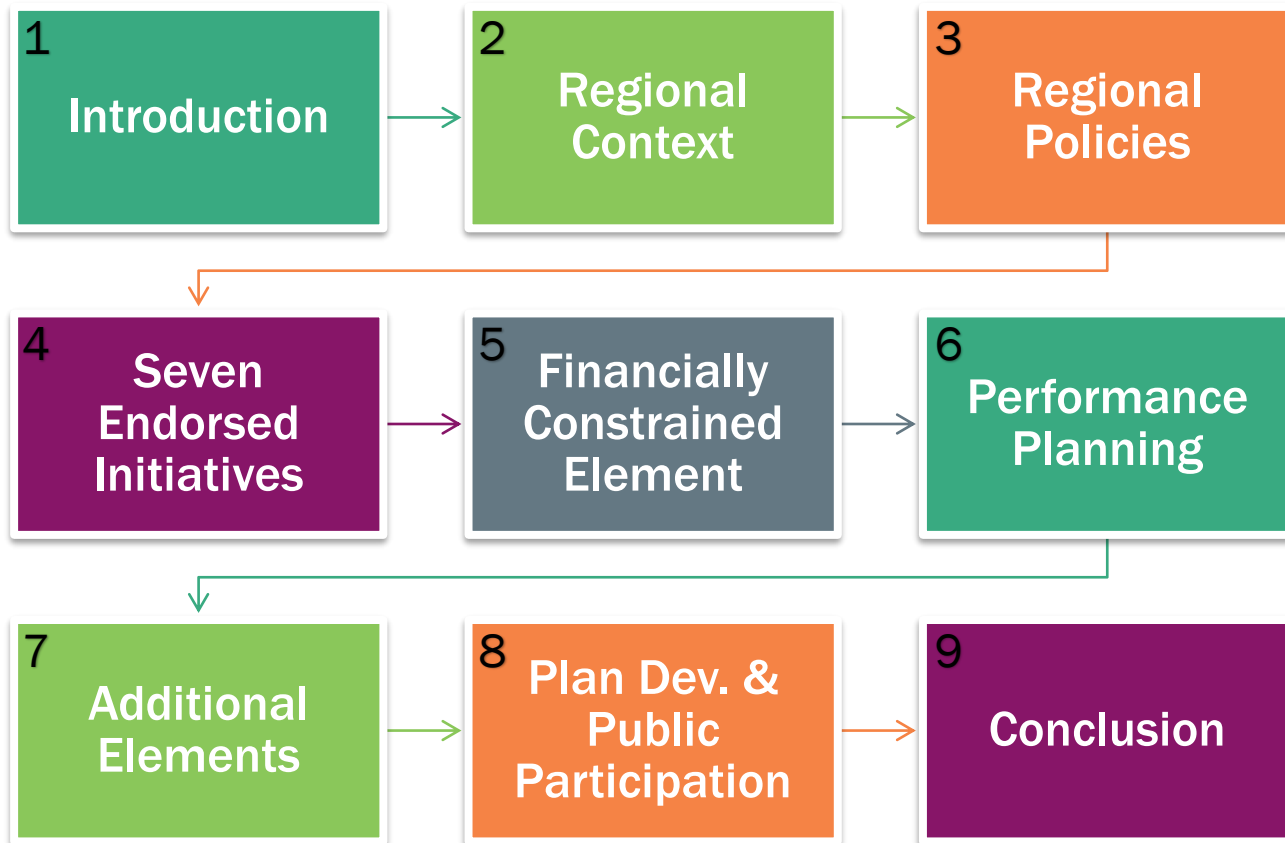
During the presentation think about...

- What do you want to see in this new iteration of the TPB's long-range transportation plan?
- Is there anything else that you want the plan to highlight?

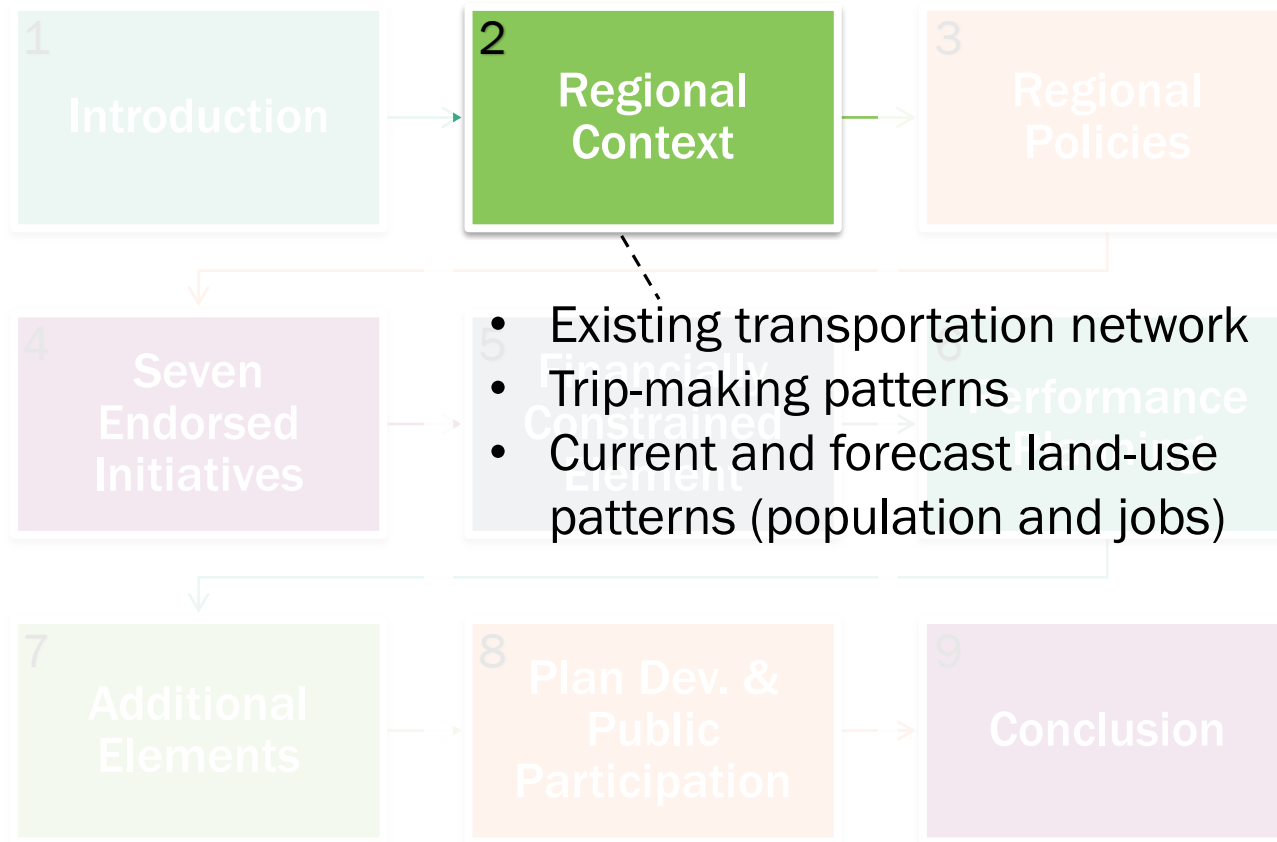
We'll open it up for discussion and questions after the presentation portion of this item.



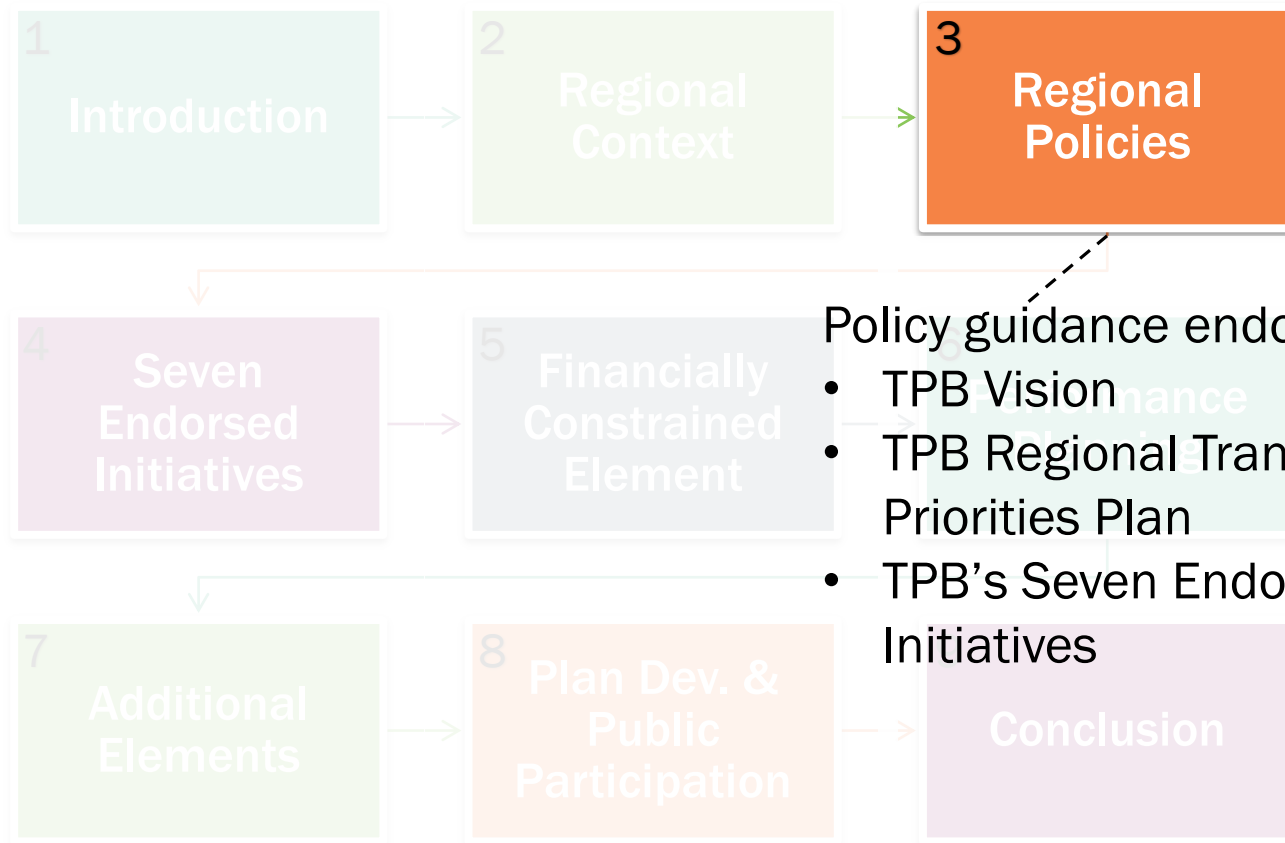
Plan Outline



Plan Outline



Plan Outline

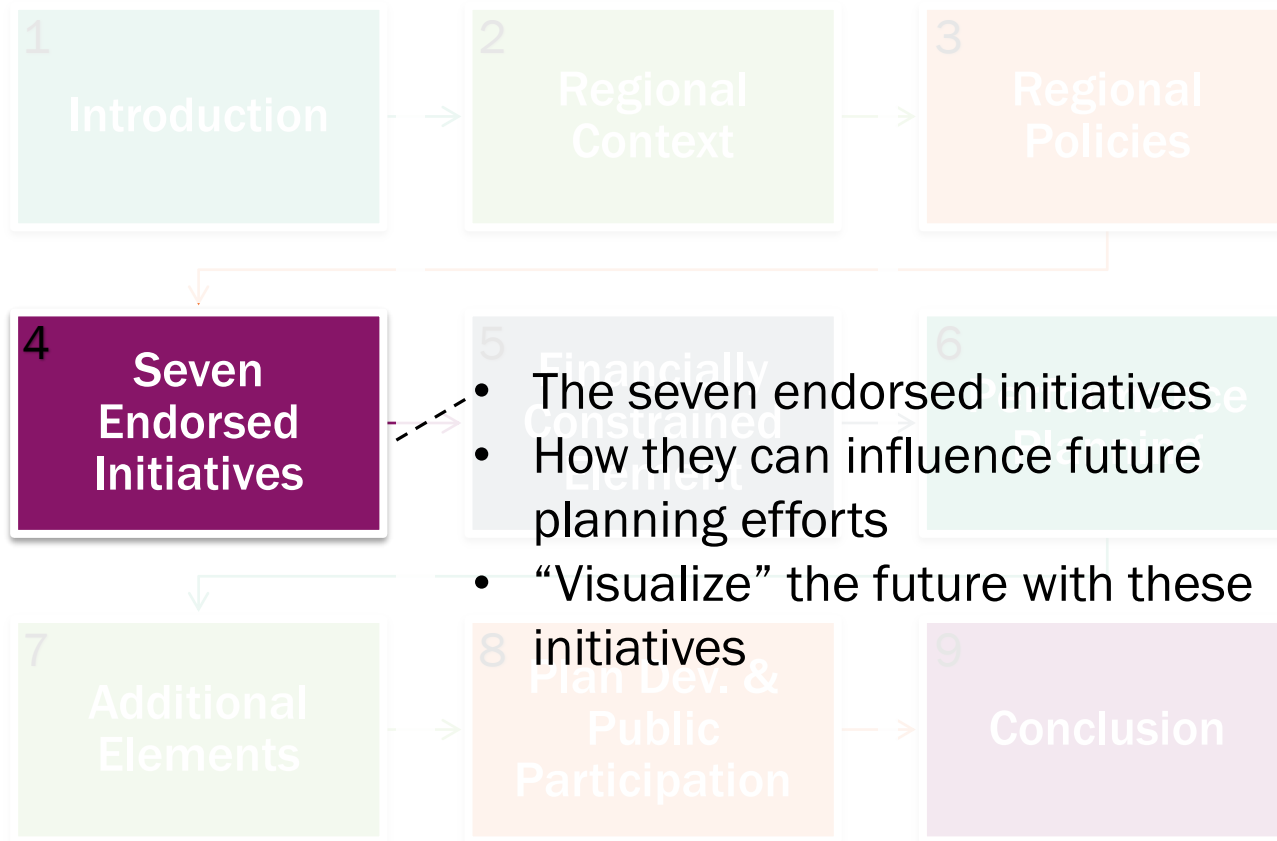


Policy guidance endorsed by TPB

- TPB Vision
- TPB Regional Transportation Priorities Plan
- TPB's Seven Endorsed Initiatives



Plan Outline



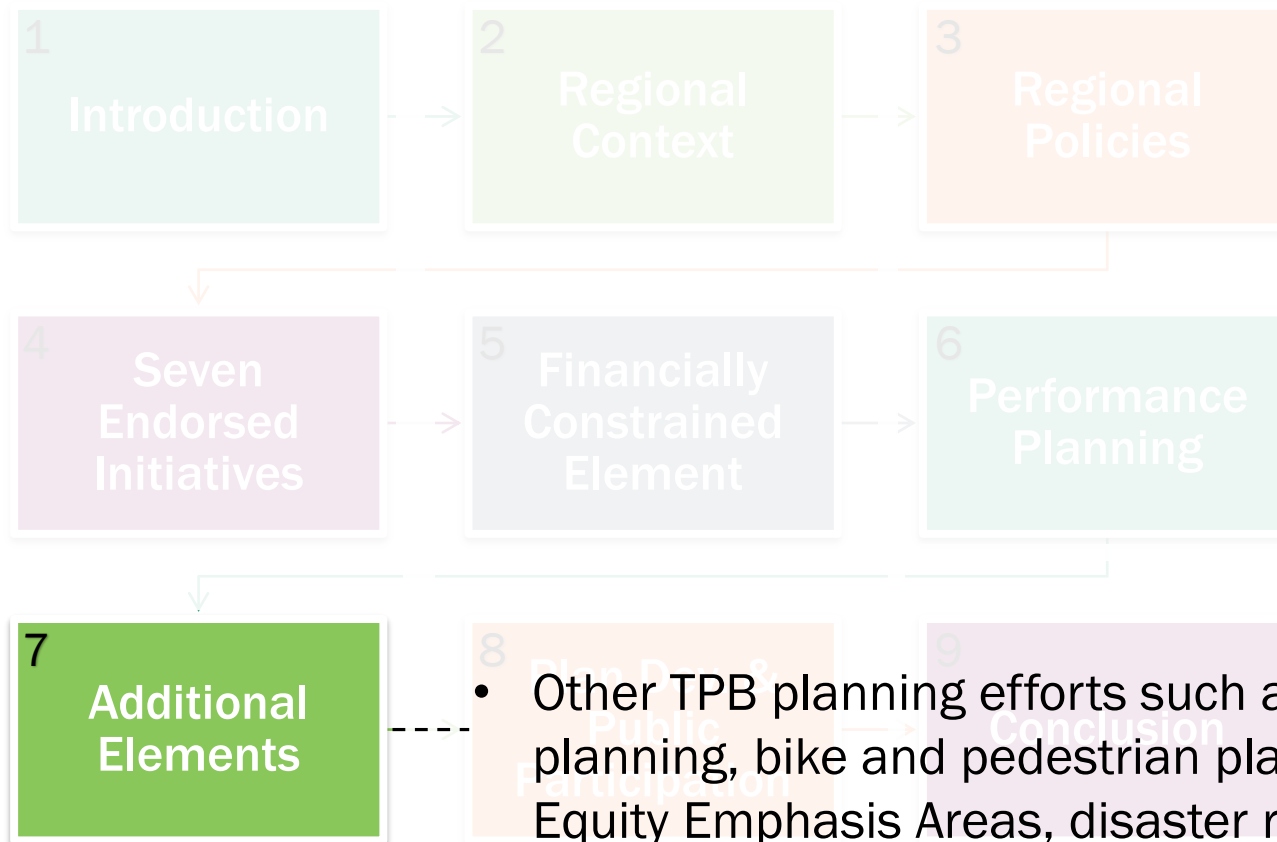
Plan Outline



Plan Outline



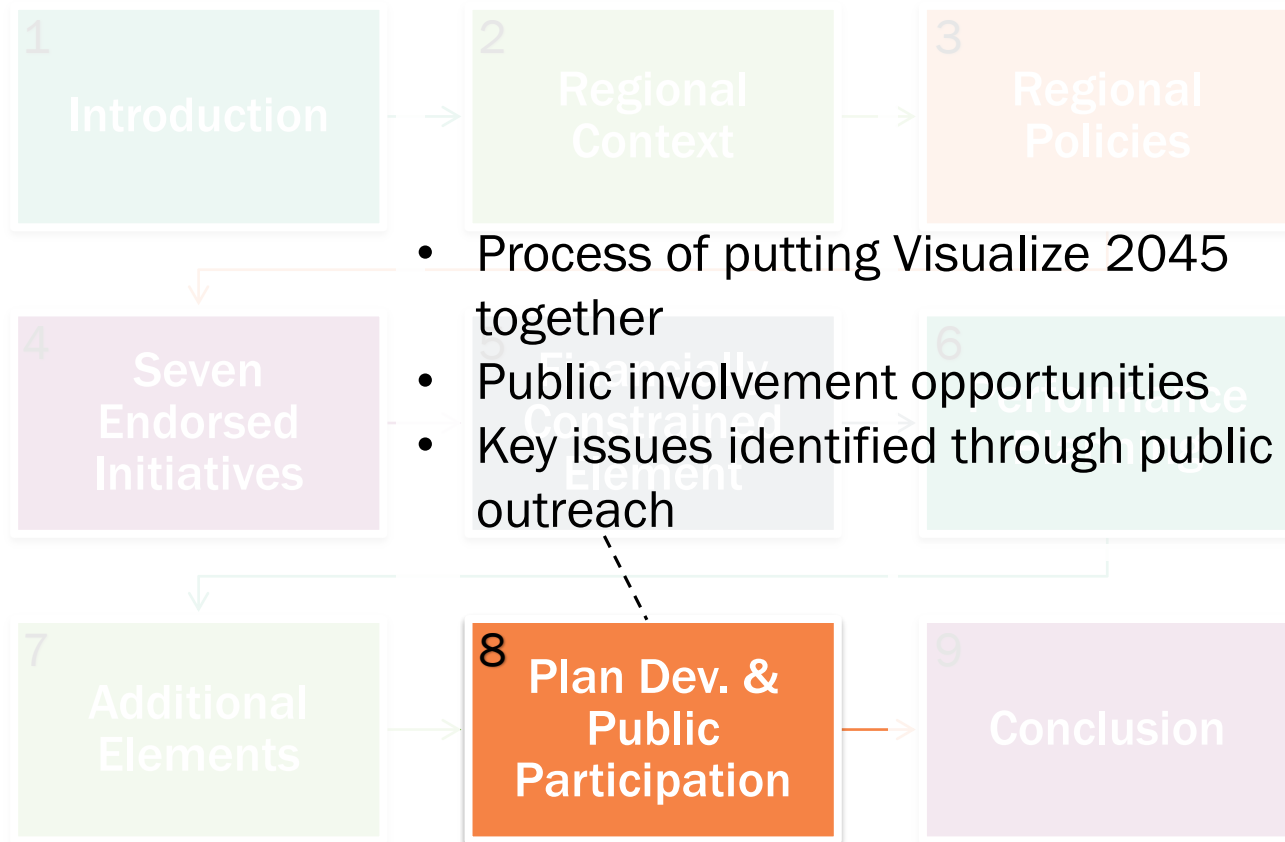
Plan Outline



- Other TPB planning efforts such as freight planning, bike and pedestrian planning, Equity Emphasis Areas, disaster risk reduction, etc.



Plan Outline



Visualize 2045 Timeline

Winter/Spring 2018	Preparing Content for Visualize 2045 Plan Document
Spring 2018	Public Forums
Summer 2018	Technical Analysis
September 2018	Draft Plan Released for Public Comment and Public Open Houses
October 2018	Final TPB Approval



Discussion and Q&A

- Is what we are presenting today on track with what you have been envisioning that this plan would include?
- Is there anything else that you want the plan to highlight?

If you have any feedback after today please feel free to call or email Lori (contact info on next slide)

Lori Zeller, AICP

Transportation Planner

(202) 962-3290

Lzeller@mwkog.org

mwkog.org/tpb

Metropolitan Washington Council of Governments

777 North Capitol Street NE, Suite 300

Washington, DC 20002



National Capital Region
Transportation Planning Board