

# Anne Arundel County Transit

TPB-Public Transit Subcommittee, March 26th, 2024

Anne Arundel County Seal

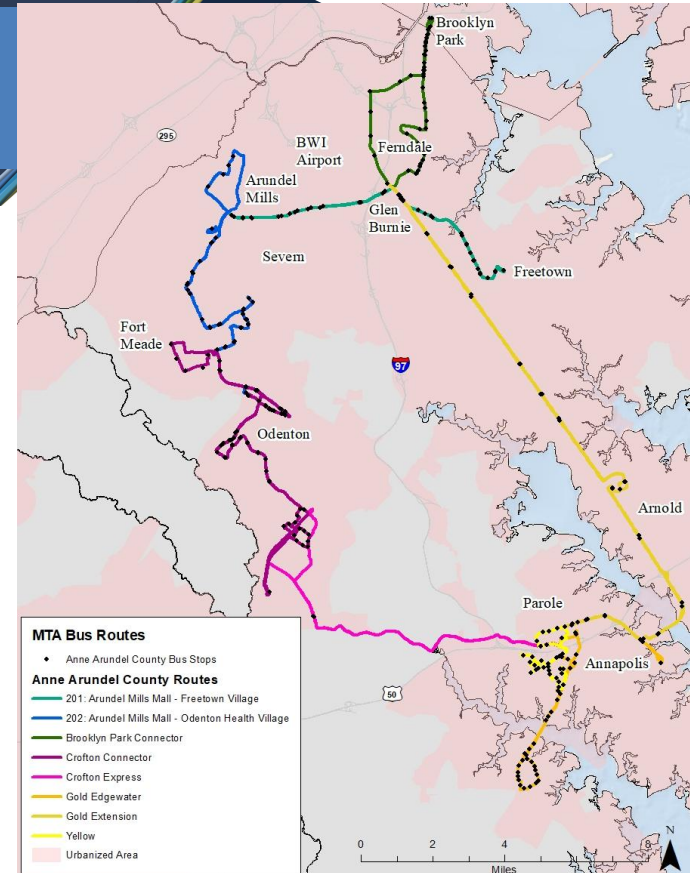


# Overview

- Current Services
- Recent Rider Upgrades
- Planned Improvements

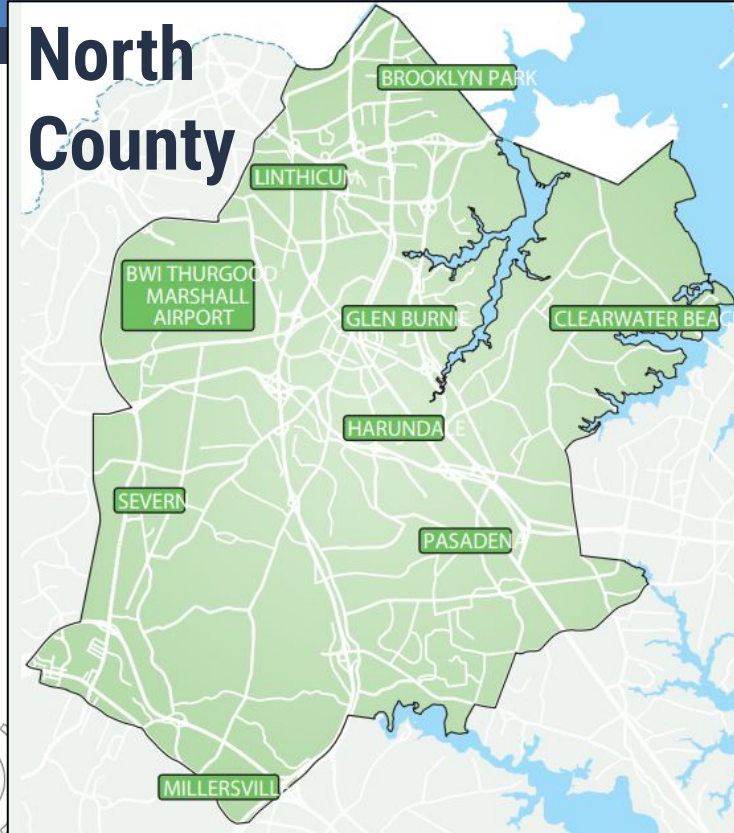
# Current Service Overview

- Fixed Routes
- North County / South County Call N'Ride Services
- ADA Complementary Paratransit
- General Paratransit Services
  
- All services are fare-free

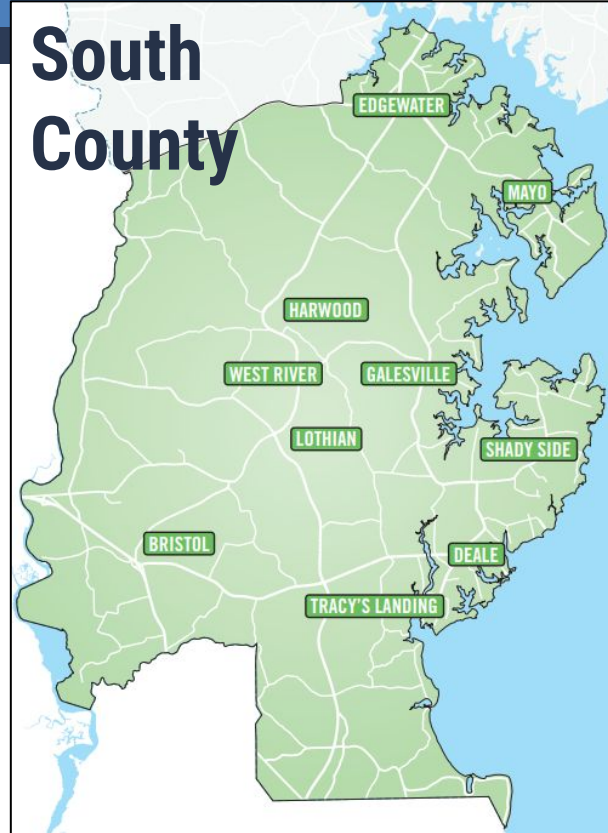


# Call N'Ride Services

## North County

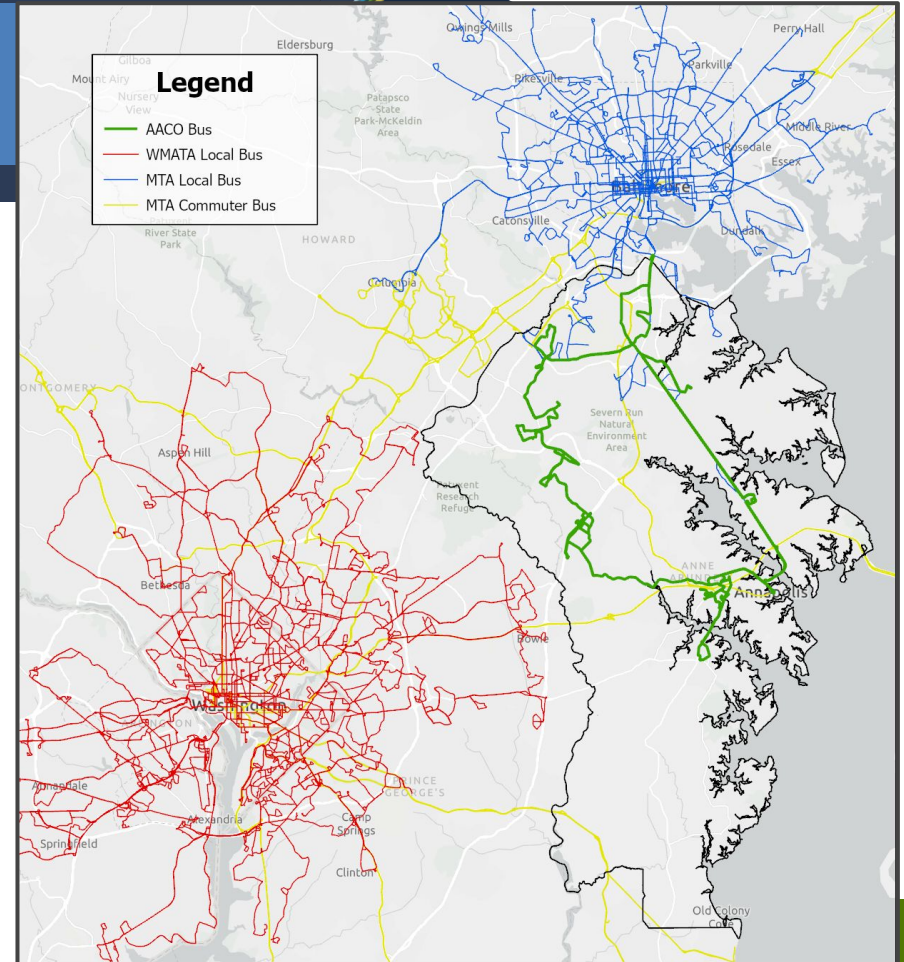


## South County



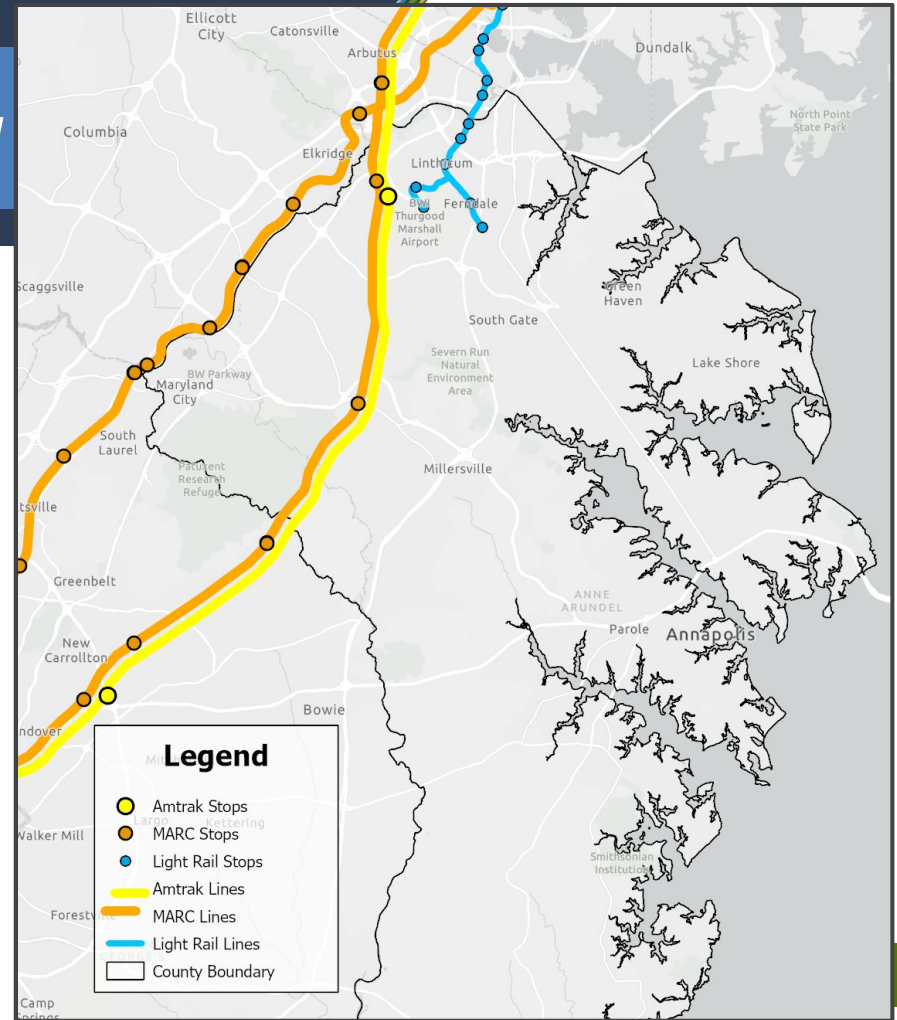
# Regional Bus Service Overview

- MDOT MTA
- RTA
- Annapolis Transit
- County Connector
- Department of Aging and Disabilities
- Private and Non-Profit Providers
- Ridesharing



# Regional Rail Service Overview

- Amtrak - Northeast Corridor
- Baltimore Light RailLink
- Maryland Area Rail Commuter (MARC)
- Baltimore & DC Metro Systems



# Technology Updates



- Passio Go!- Allows riders to see buses in real-time and provides updates on delays and schedule changes.



- Pingo - Allows riders to schedule trips with our Call N' Ride service ahead of time.



- Transit App - Links our fixed route services with MTA, DC, and Annapolis.

# Approved Capital Projects

- Parole Transportation Center: \$17.2 million
- Odenton MARC Garage: \$35.6 million
- Transportation Operations Facility: \$6.98 million
- Arundel Mills Bus Shelter Enhancements: \$1.8 million
- Transit Improvements \$50,000 annually
- Safe Routes to Transit \$500,000 annually





# Transit Development Plan

- Adoption as a component of County's Transportation Masterplan
- Draft at Planning Board
- County Council this Spring



## Anne Arundel County Transit Development Plan

*Draft Final Plan – January 2024*



**KFH Group, Inc.**  
Bethesda, MD | Austin, TX

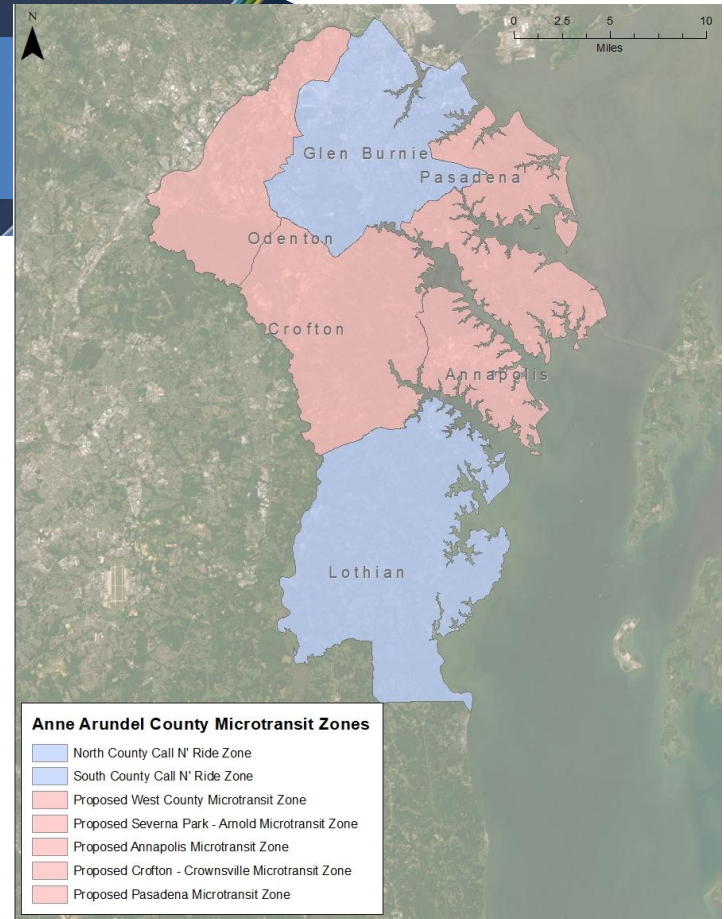
# Proposed Service Plan

- Expanded On-Demand Services
- New Fixed Route Service
- Expanded Regional Services
- Ongoing Review of Current Routes for Consideration of Increased Frequency
- Coordination with Regional Transit Partners



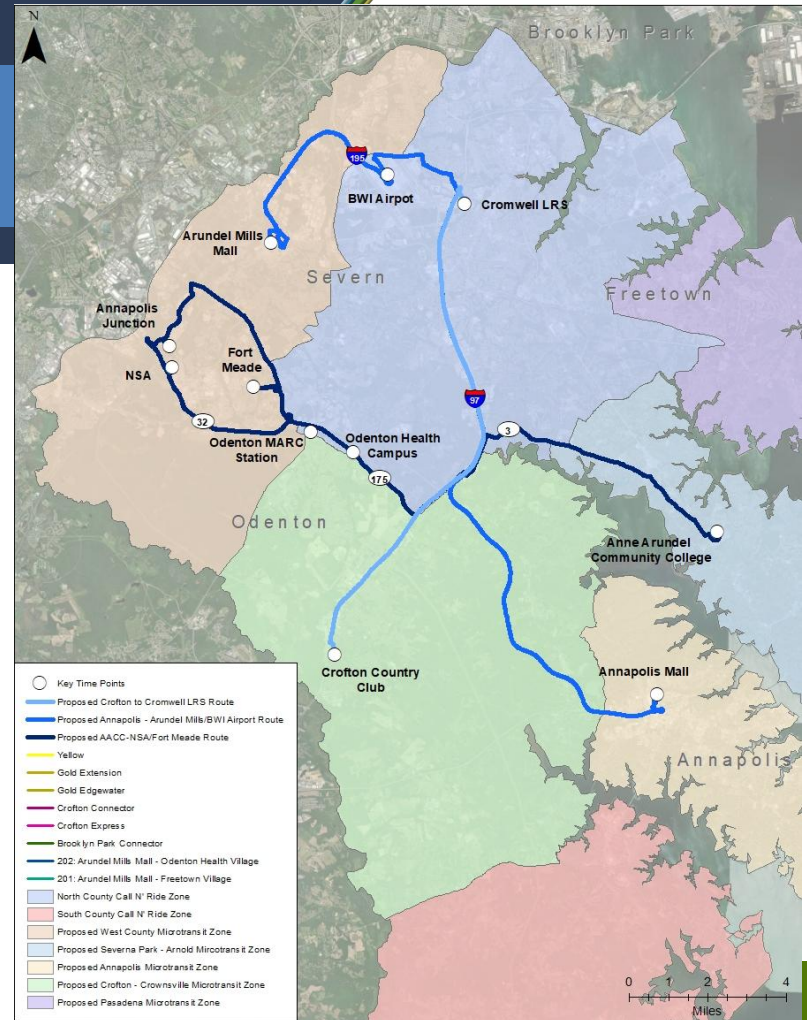
# Proposed On-Demand Microtransit Service

- Real-time service that uses dynamic routing and scheduling
- Trips primarily requested via smartphone/app
- Features:
  - ▷ Smaller vehicles
  - ▷ Geofenced service area
  - ▷ First mile/last mile connections with existing transportation services



# Potential Future Network

- On-Demand Services – Existing and Planned
- New County Routes
- Note: Does not show potential regional services



# Phased Improvement Plan

Proposed Operating Hours  
for On-Demand Services:  
Monday -Saturday:  
7:00 a.m. - 7:00 p.m.

## Year 1

- West County On-Demand Service
- Annapolis /Parole On-Demand Service

## Year 2

- Severna Park/Arnold On-Demand Service
- Pasadena On-Demand Service

## Year 3

- Crofton/Crownsville On-Demand Service
- Community College/Severna Park – Fort Meade/NSA Route

## Year 4

- Laurel – NSA/Fort Meade Service
- Crofton-Bowie Service
- Annapolis – Arundel Mills/BWI Airport
- Crofton – Cromwell Light Rail

## Year 5 and Beyond

- Parole – New Carrollton Express Service
- I-97 Express: Cromwell Light Rail – Parole Transportation Center
- Pasadena – NSA
- Glen Burnie – Fort Meade

# Comments or Questions

