



CDI Medical Systems, Inc.



CDI Medical Systems, Inc.

Surge Capacity Response Utility Base Systems (SCRUBS)

SCRUBS: The Integrated Solution

- Shelters
- Lights & power generation/distribution
- Environmental control
- Medical Equipment & Supply Sets (ESS)
- Training & Capabilities Integration



"A System of Services for Operational Medicine."



Surge Capacity Response Utility Base Systems (SCRUBS)

Company Overview: CDI Medical Systems, Inc.

- **Certified Service Disabled Veteran-owned (SDV) small business**
- **“Boots on the Ground” medical experience**
- **Certified Experts in Operational Medicine**

- **Specializing in Operational Medicine Support to:**
 - **Department of Defense**
 - **Department of Homeland Security**
 - **State and Local governments**
 - **Hospitals and Clinics**
 - **Local municipalities (Fire/EMS/Police)**

"A System of Services for Operational Medicine."



CDI Medical Systems, Inc.

Surge Capacity Response Utility Base Systems (SCRUBS)



"A System of Services for Operational Medicine."



CDI Medical Systems, Inc.

Surge Capacity Response Utility Base Systems (SCRUBS)



CDI Medical Systems, Inc.

Shelters are available in four colors:

- green

- blue

- tan

- white

"A System of Services for Operational Medicine."



CDI Medical Systems, Inc.

Surge Capacity Response Utility Base Systems (SCRUBS)

CDI's FIRST RESPONDER (SCRUBS FR) Systems
provides the Fire/EMS/Police community with:

1. **A cost-effective, multi-functional infrastructure** that can be used for an Incident Command Post, On-scene recovery, Triage, or almost any other purpose.
2. **A rapid set-up/rapid tear down** shelter system that can be set up almost anywhere by 3-4 people.
3. **Power, lights, and environmental control** for the shelter system to allow complete operations in any type of weather.
4. **A system that can expand or contract** as the incident response ramps up or down.

"A System of Services for Operational Medicine."



Surge Capacity Response Utility Base Systems (SCRUBS)

SCRUBS: Infrastructure Systems

FR-1 (First Responder 1)

- One (1) transport trailer
- One (1) 35kvA sound attenuated generator
- One (1) environmental control unit (5 ton ruggedized heat pump)
- One (1) soft sided shelter (approx.500 sq. ft. each)



"A System of Services for Operational Medicine."



Surge Capacity Response Utility Base Systems (SCRUBS)

SCRUBS: Infrastructure Systems

FR-2 (First Responder 2)

- One (1) transport trailer
- One (1) 70kVA sound attenuated generator
- Two (2) environmental control units (5 ton ruggedized heat pump)
- Two (2) soft sided shelter (approx.500 sq. ft. each)



"A System of Services for Operational Medicine."



Surge Capacity Response Utility Base Systems (SCRUBS)

SCRUBS: Infrastructure Systems

FR-3 (First Responder 3)



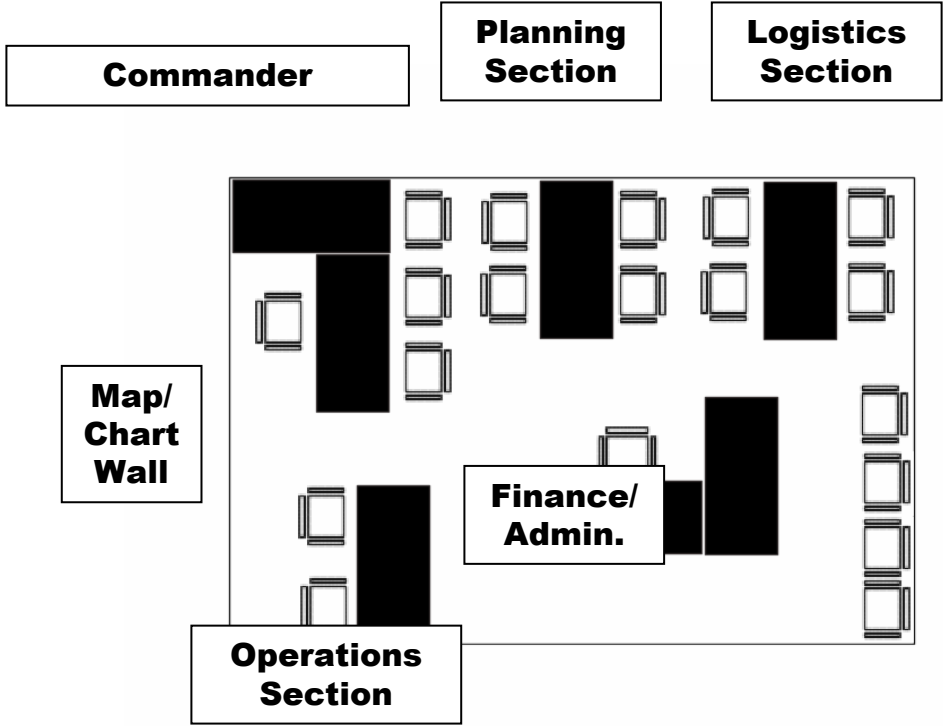
- One (1) transport trailer
- One (1) 70kvA sound attenuated generator
- One (1) environmental control units (12 ton ruggedized heat pump)
- Three(3) soft sided shelter (approx.500 sq. ft. each)

"A System of Services for Operational Medicine."



Surge Capacity Response Utility Base Systems (SCRUBS)

SCRUBS: Incident Command (*sample configuration*)



"A System of Services for Operational Medicine."



Surge Capacity Response Utility Base Systems (SCRUBS)

CDI's **SURGE CAPACITY (SCRUBS SC) Systems** provides the Health Department or Hospital based responder community with:

1. **A cost-effective, multi-functional infrastructure** that can be used for Isolation of contagious patients, treating/staging of Mass Casualty Incident (MCI) patients, or almost any other purpose.
2. **A rapid set-up/rapid tear down** shelter system that can be set up almost anywhere by 3-4 people.
3. **Power, lights, and environmental control** for the shelter system to allow complete operations in any type of weather.
4. **A system that can expand or contract** as the incident response ramps up or down.

"A System of Services for Operational Medicine."



Surge Capacity Response Utility Base Systems (SCRUBS)

SCRUBS: Infrastructure Systems

SC-50 (Surge Capacity- 50 bed)



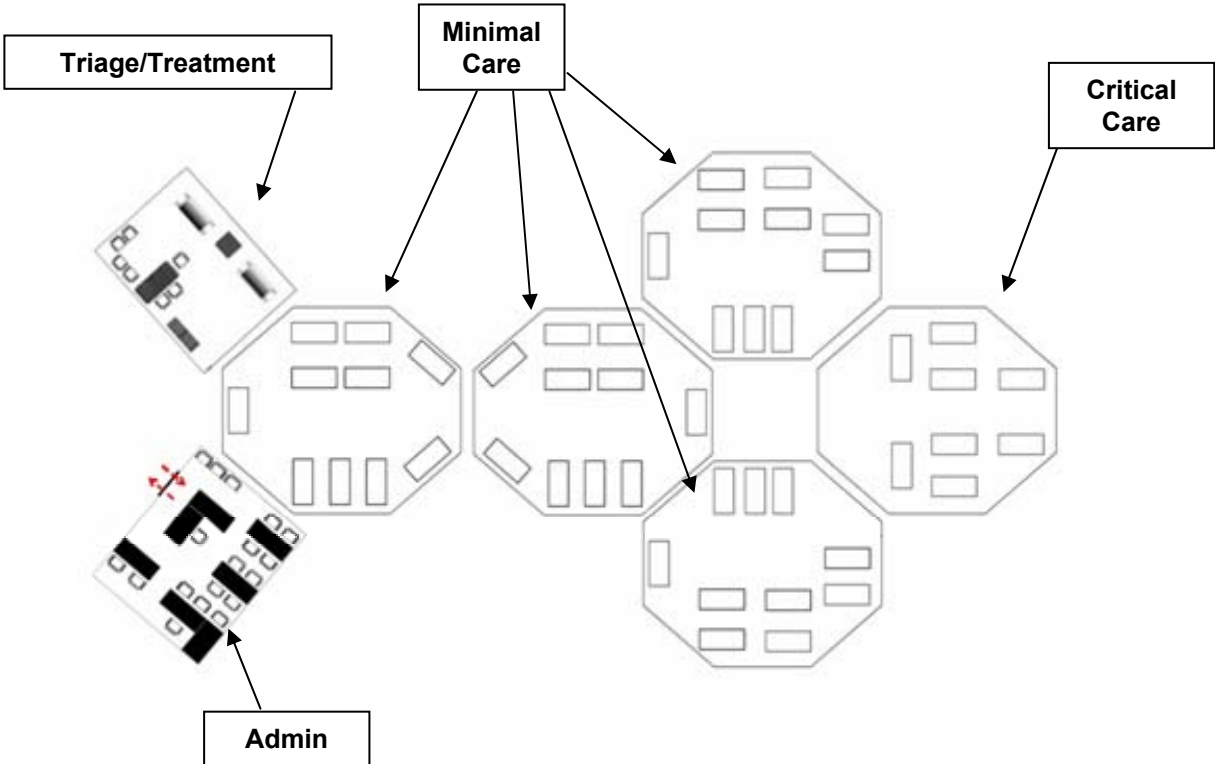
- Six (6)** transport trailers
- Five (5)** 70kVA sound attenuated generators
- Five (5)** environmental control units (12 ton ruggedized heat pump)
- Two (2)** soft sided shelter (approx. 500 sq. ft. each)
- Five (5)** Dome shelters (approx. 1000 sq. ft. each)

"A System of Services for Operational Medicine."



Surge Capacity Response Utility Base Systems (SCRUBS)

Surge Capacity- 50 bed: (sample configuration)



"A System of Services for Operational Medicine."



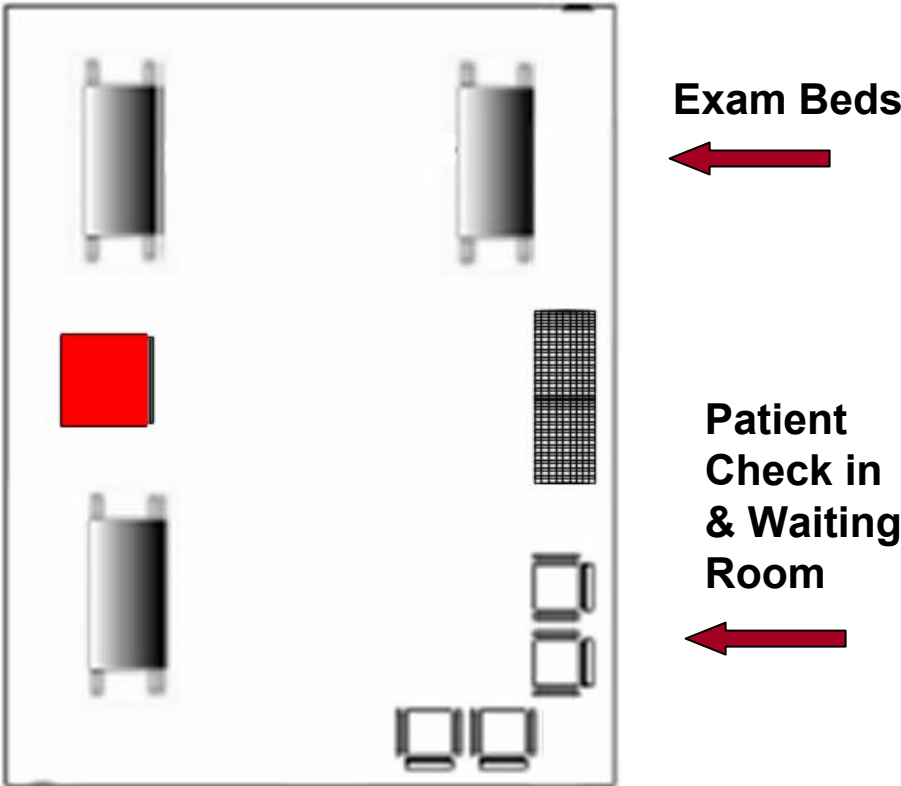
Surge Capacity Response Utility Base Systems (SCRUBS)

SCRUBS: Triage ESS (*sample configuration*)

Triage

An emergency Triage medical Equipment & Supply Set (ESS) that can support a thru put of up to 500 patients over a 72 hour period without resupply.

Sample Triage Setup



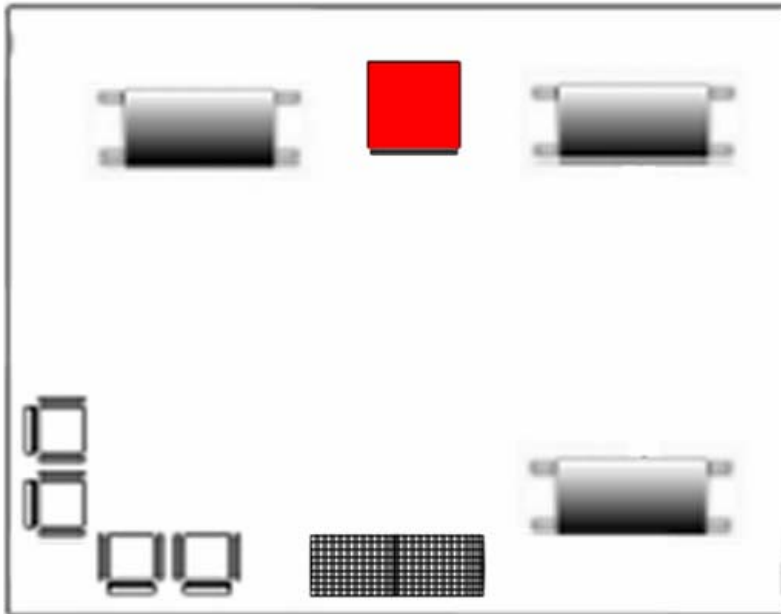
"A System of Services for Operational Medicine."



CDI Medical Systems, Inc.

Surge Capacity Response Utility Base Systems (SCRUBS)

SCRUBS: Outpatient Care ESS (*sample configuration*)



Sample Outpatient Care Setup

Outpatient Care:

An Outpatient Care (Ambulatory Care) medical Equipment & Supply Set (ESS) that can support a thru put of up to 500 patients over a 72 hour period without resupply.

"A System of Services for Operational Medicine."

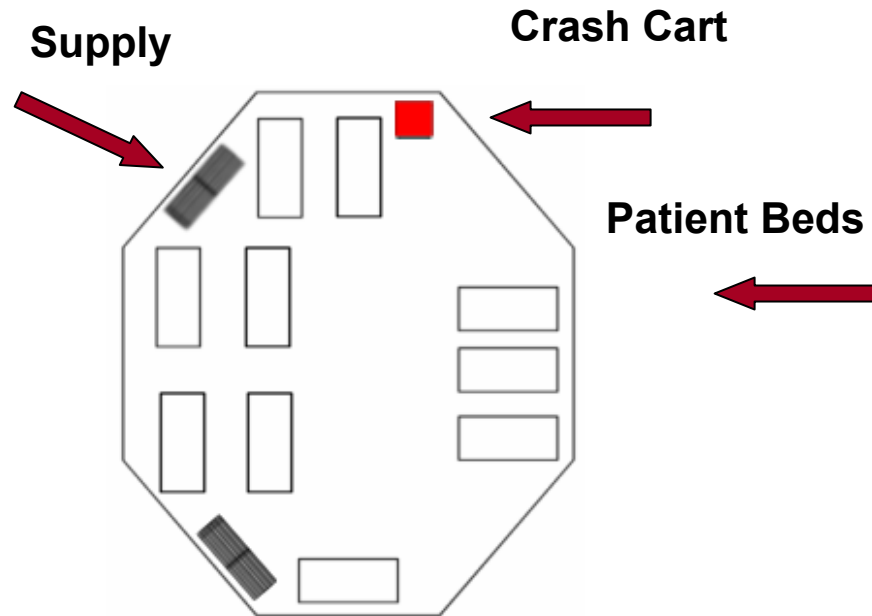


Surge Capacity Response Utility Base Systems (SCRUBS)

SCRUBS: Essential Care ESS (*sample configuration*)

Essential Care:

Each Essential Care medical Equipment & Supply Set (ESS) is capable of providing a minimal care/med-surg type setting for up to five patients at a time for up to 72 hours without resupply.



Sample Essential Care Setup

(with 2 ESS's shown)

"A System of Services for Operational Medicine."



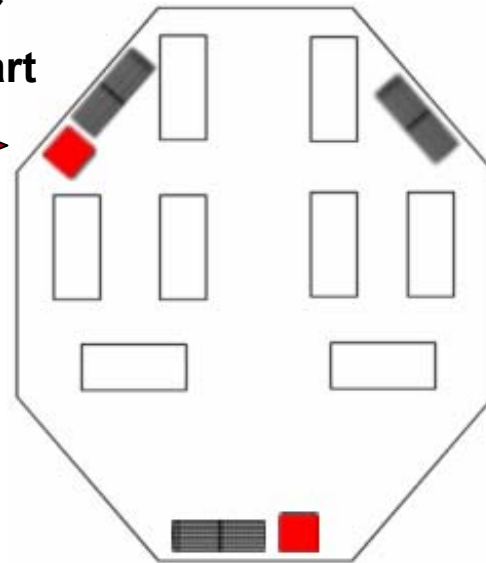
Surge Capacity Response Utility Base Systems (SCRUBS)

SCRUBS: Critical Care ESS (*sample configuration*)

Critical Care:

Each Critical Care medical Equipment & Supply Set (ESS) is capable of providing ICU like support (ventilators, O₂, monitors, etc) for up to four patients at a time for up to 72 hours without resupply.

Supply &
Crash Cart



Patient Beds



Sample Critical Care Setup

(with 2 ESS's shown)

"A System of Services for Operational Medicine."



CDI Medical Systems, Inc.

Surge Capacity Response Utility Base Systems (SCRUBS)

POINT OF CONTACT:

**CDI Medical Systems, Inc.
5235 Westview Drive, Suite 100
Frederick, MD 21703**

**Gary L. Cagle, President and CEO
Office: (301) 698-5757
Direct: (240) 674-8404**

Email: gary.cagle@cdimedical.com

"A System of Services for Operational Medicine."