

CHARGING AND FUELING INFRASTRUCTURE (CFI) PROGRAM

Maryland Clean Energy
Center Round 1B Award
& Round 2 Proposal

9/25/2024

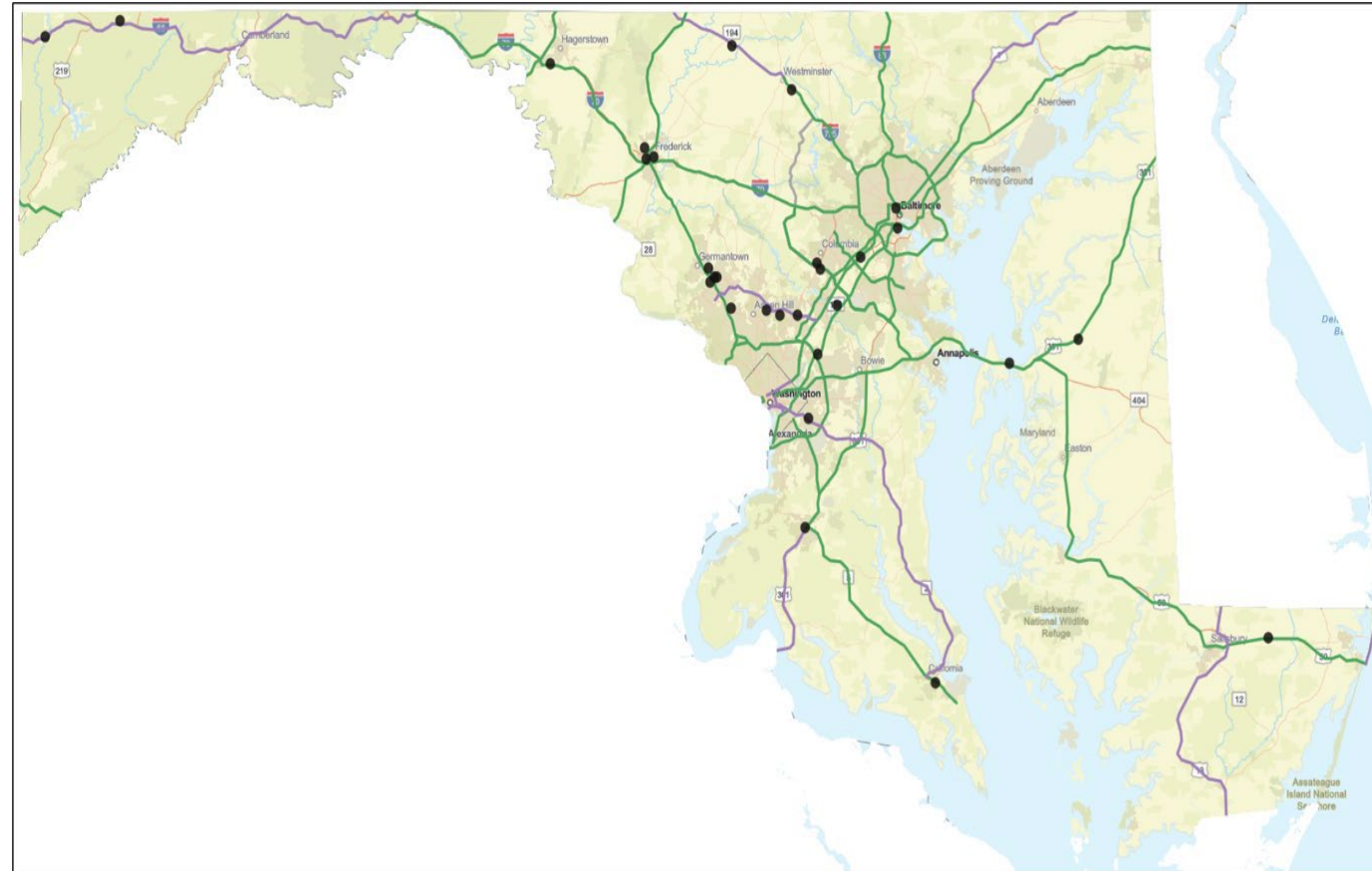
Amy Gillespie, Grants Administrator &
Compliance Officer



MECIP 1B CORRIDOR SITES

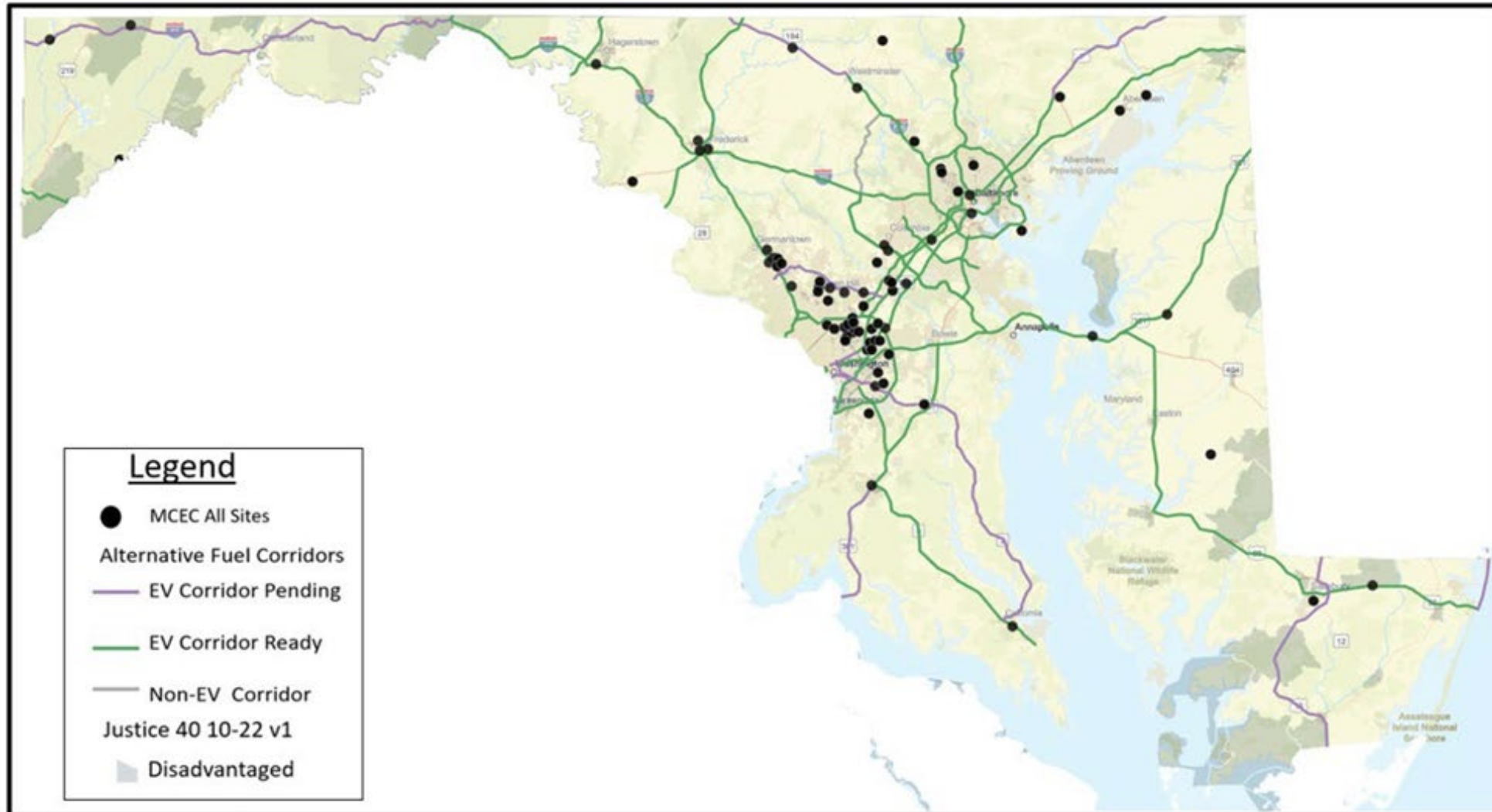
ROUND 1B AWARD:

- \$33.4 Million Awarded for Corridor sites
- Installation of an additional 29 EV Corridor Compliant Sites—statewide
- Sites include:
 - Car Dealerships
 - Fleet Use Sites
 - Urban Parking
 - Gas Stations
 - Libraries
 - Municipal Fleet/Public Safety Complexes
 - Tourism Sites



Community & Corridor Sites (1A & 1B)

87 Total Sites Across Maryland



Greenhouse Gas Reductions/Deliverables (Across both Community & Corridor sites)

- Fuel use by 9,119.6 barrels annually
- Greenhouse gas (GHGs) emissions by 2,894.6 metric tons annually
- Other pollutants CO, NOx, PM10, PM2.5, VOC, and Sox by 44,121.4 lb. annually

Annual Charging Calculator Output - Energy Use and Emissions Benefits

Venue	Petroleum Use (barrels)	GHGs (metric tons)	CO (lb)	NOx (lb)	PM10 (lb)	PM2.5 (lb)	VOC (lb)	SOx (lb)	Electricity Dispensed (kWh)
Level 2 Chargers									
Parking Lot									
Retail & Leisure	1,201.5	381.4	5,054.3	70.0	7.9	7.9	666.2	6.6	537,238
Education	951.6	302.0	4,002.9	55.5	6.3	6.3	527.6	5.2	425,486
Healthcare	42.7	13.5	179.5	2.5	0.3	0.3	23.7	0.2	19,084
Workplace	318.4	101.1	1,339.2	18.6	2.1	2.1	176.5	1.7	142,350
Multi-Unit Dwelling	4,457.0	1,414.7	18,749.1	259.8	29.4	29.4	2,471.4	24.4	1,992,900
Single-Unit Dwelling									
L2 Charger Total	6,971.2	2,212.7	29,325.1	406.4	46.1	46.1	3,865.4	38.1	3,117,058
DC Fast Chargers									
Parking Lot	56.4	17.9	237.4	3.3	0.4	0.4	31.3	0.3	25,229
Retail & Leisure	1,265.6	401.7	5,323.9	73.8	8.4	8.4	701.8	6.9	565,891
Education	246.6	78.3	1,037.6	14.4	1.6	1.6	136.8	1.3	110,286
Healthcare	36.9	11.7	155.1	2.1	0.2	0.2	20.4	0.2	16,489
Workplace	464.3	147.4	1,953.1	27.1	3.1	3.1	257.4	2.5	207,597
Multi-Unit Dwelling	78.6	24.9	330.6	4.6	0.5	0.5	43.6	0.4	35,140
Single-Unit Dwelling									
DC Fast Charger Total	2,148.4	681.9	9,037.6	125.3	14.2	14.2	1,191.3	11.7	960,632
Total	9119.6	2894.6	38362.6	531.7	60.3	60.3	5056.7	49.9	4077689.9

Installation Partnering Agencies

Partner 1A	Partner 1B
MCEC	MCEC
Apexx Adams Transportation	BGE
Baltimore County	City of Baltimore
BGE	City of Rockville
Citizen Energy	Francis Energy
City of Havre de Grace	Frederick County
City of Salisbury	Garrett County
Francis Energy	Howard County
Garrett County	Lightility
Howard County	Montgomery County
Lightility	Queen Anne's County
Shell/Volta/Equilon	

Workforce Development & Education/Outreach (1A & 1B)

Workforce Development Programming	Education & Outreach Programming
Apexx Adams Transportation	Apexx Adams Transportation
IBEW Local 24 JATC	Build America Center (BAC @ UMD)
	Citizen Energy
	MCEC

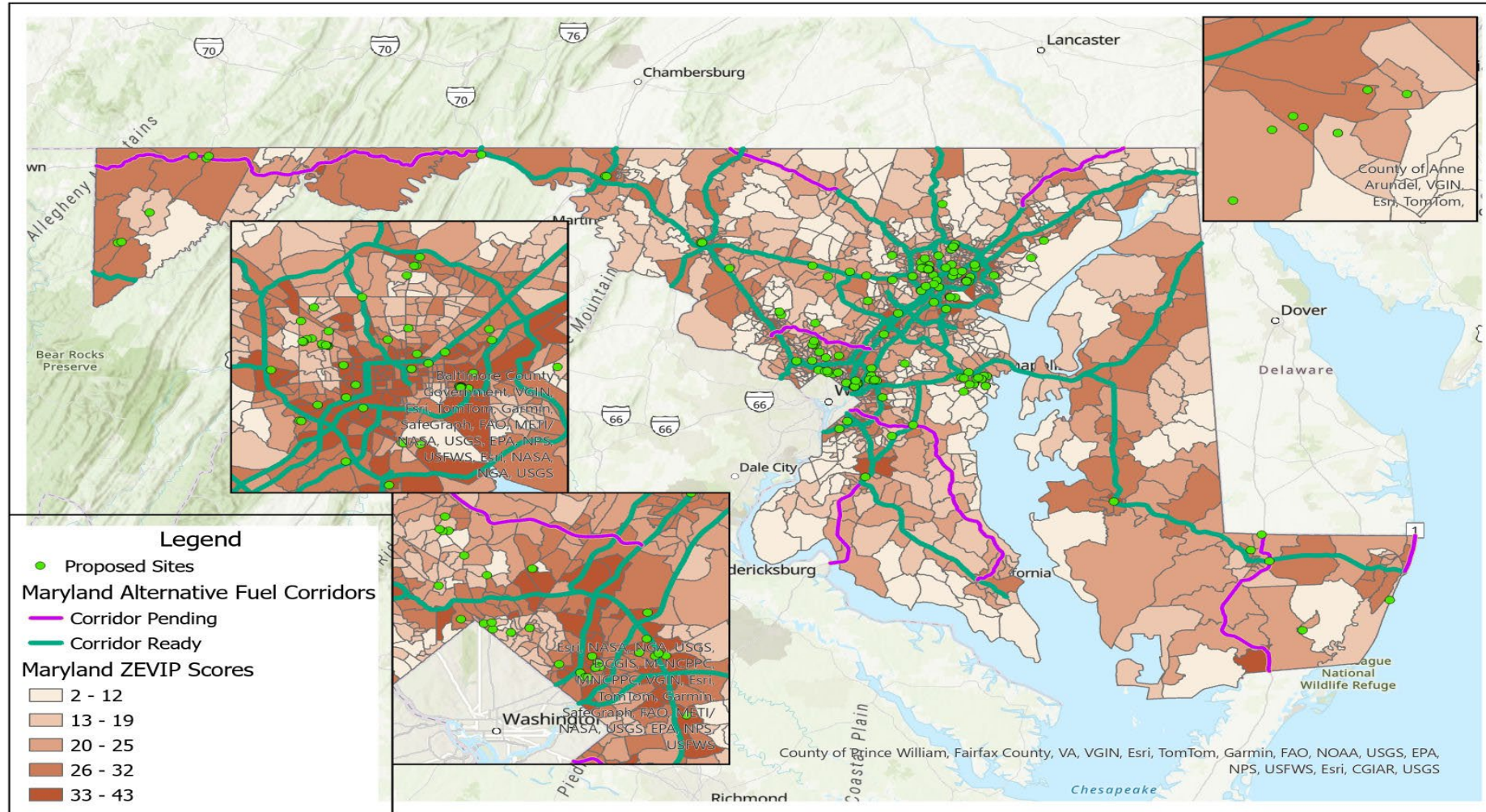
- 600 Apprentices and Journey Persons Electricians to be trained in EV installation
- Registered Apprenticeship Programming for BIOPIC Communities/Clean Energy/EV Installation
- Avanza Outreach to LIDAC Hispanic Communities
- Outreach and Education Programming for Clean Energy from MCEC

CFI Round 1A & 1B Totals

1A Totals--Award \$15M, Cost Share/Match \$4.4M
58 Community Sites—Statewide

1B Totals—Award \$33.4M, Cost Share/Match \$6.6M
29 Community Sites—Statewide

Charging and Fueling Infrastructure (CFI Round 2)



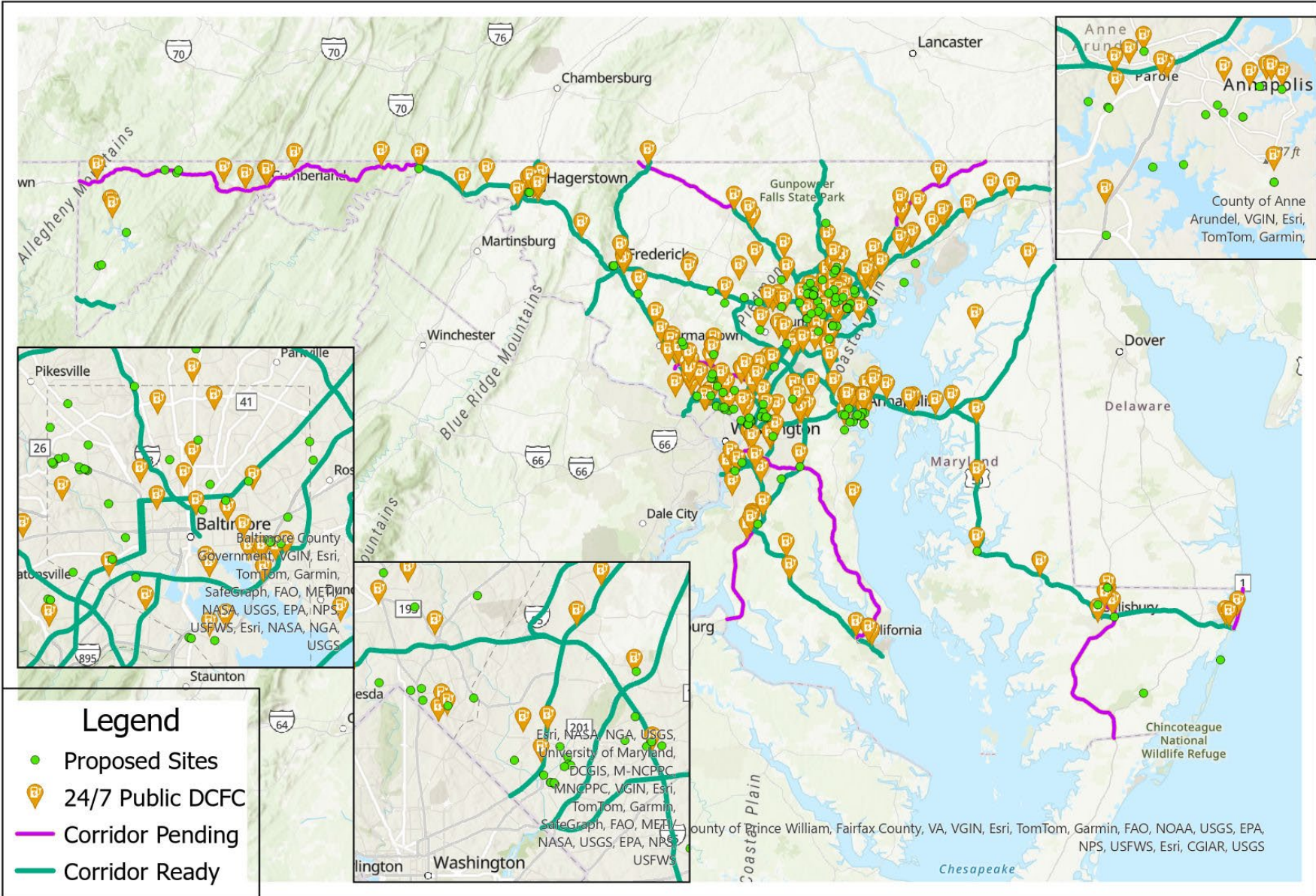
All Proposed Locations

Date Exported: 9/4/2024 2:32 PM

0 50 100 200 Miles

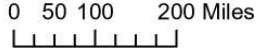


Round 2 Sites



24/7 Public DC Fast Chargers

Date Exported: 9/4/2024 3:06 PM



COMMUNITY SITE AFLEET NUMBERS:

- Fuel use by 1442 barrels annually
- Greenhouse gas (GHGs) emissions by 500.50 short tons annually
- Other pollutants CO, NO_x, PM₁₀, PM_{2.5}, VOC, and Sox by 5,407.6 lb. annually

CORRIDOR SITE AFLEET NUMBERS:

- Fuel use by 2093.5 barrels annually
- Greenhouse gas (GHGs) emissions by 726.7 short tons annually
- Other pollutants CO, NO_x, PM₁₀, PM_{2.5}, VOC, and Sox by 7,850.6 lb. annually

Venue	Petroleum Use (barrels)	GHGs (short tons)	CO (lb)	NO _x (lb)	PM ₁₀ (lb)	PM _{2.5} (lb)	VOC (lb)	SO _x (lb)	Fuel Dispensed (fuel unit)	Fuel Unit
Level 2 Chargers										
Parking Lot	162.5	56.4	538.0	10.4	1.4	1.2	57.4	0.9	70,393	kWh
Retail & Leisure	198.6	68.9	657.5	12.8	1.7	1.5	70.1	1.1	86,036	kWh
Education	65.0	22.6	215.2	4.2	0.6	0.5	22.9	0.4	28,157	kWh
Healthcare										kWh
Workplace	10.8	3.8	35.9	0.7	0.1	0.1	3.8	0.1	4,693	kWh
Multi-Unit Dwelling	849.2	294.8	2,811.9	54.5	7.4	6.3	299.8	4.6	367,920	kWh
Single-Unit Dwelling										kWh
L2 Charger Total	1,286.1	446.4	4,258.4	82.6	11.2	9.5	454.0	7.0	557,199	kWh
DC Fast Chargers										
Parking Lot	31.2	10.8	103.3	2.0	0.3	0.2	11.0	0.2	13,515	kWh
Retail & Leisure	124.8	43.3	413.2	8.0	1.1	0.9	44.0	0.7	54,062	kWh
Education										kWh
Healthcare										kWh
Workplace										kWh
Multi-Unit Dwelling										kWh
Single-Unit Dwelling										kWh
DC Fast Charger Total	156.0	54.1	516.5	10.0	1.4	1.2	55.1	0.9	67,577	kWh
Total	1,442.0	500.5	4,774.9	92.6	12.5	10.6	509.1	7.9	624,775.7	

Venue	Petroleum Use (barrels)	GHGs (short tons)	CO (lb)	NO _x (lb)	PM ₁₀ (lb)	PM _{2.5} (lb)	VOC (lb)	SO _x (lb)	Fuel Dispensed (fuel unit)	Fuel Unit
Level 2 Chargers										
Parking Lot										kWh
Retail & Leisure	31.8	11.0	105.2	2.0	0.3	0.2	11.2	0.2	13,766	kWh
Education	14.4	5.0	47.8	0.9	0.1	0.1	5.1	0.1	6,257	kWh
Healthcare										kWh
Workplace										kWh
Multi-Unit Dwelling	222.4	77.2	736.4	14.3	1.9	1.6	78.5	1.2	96,360	kWh
Single-Unit Dwelling										kWh
L2 Charger Total	268.6	93.2	889.5	17.2	2.3	2.0	94.8	1.5	116,383	kWh
DC Fast Chargers										
Parking Lot	436.7	151.6	1,446.1	28.0	3.8	3.2	154.2	2.4	189,216	kWh
Retail & Leisure	701.9	243.6	2,324.1	45.1	6.1	5.2	247.8	3.8	304,097	kWh
Education	62.4	21.7	206.6	4.0	0.5	0.5	22.0	0.3	27,031	kWh
Healthcare										kWh
Workplace	623.9	216.6	2,065.9	40.1	5.4	4.6	220.2	3.4	270,309	kWh
Multi-Unit Dwelling										kWh
Single-Unit Dwelling										kWh
DC Fast Charger Total	1,824.9	633.4	6,042.6	117.2	15.9	13.5	644.2	10.0	790,653	kWh
Total	2,093.5	726.7	6,932.1	134.4	18.2	15.5	739.0	11.4	907,035.4	

Partnering Agencies CFI Round 2

Partners	Partners	Partners	Workforce Development Partners/E & O Partners
MCEC	BGE	City of Hyattsville	Apexx Adams Transportation
City of New Carrollton	Citizen Energy	Francis Energy	Build America Center (BAC @ UMD)
Lightility	Voltpost/ZipCar	MD Department of Natural Resources	Bowie State University
City of Takoma Park	Equilon (Shell/Volta)	Montgomery County	IEC-Chesapeake
Town of Bladensburg	Town of Riverdale Park	Garrett County	
Howard County	Montgomery County	Washington County	

CFI Round 2 Totals

Round 2 Totals:

Community Application \$13.2M/\$4.1M Cost Share/Match

- 110 Community Sites

Corridor Application \$27.7M/\$6.9M Cost Share/Match

- 42 Corridor Sites

45% (68 of 152 total sites) of our COMMUNITY and CORRIDOR project sites reside in LMI/EJ/Disadvantaged Transportation Zones and increase economic opportunity

Get In Touch

Amy Gillespie
Grants Administration &
Compliance Officer

Phone: 301-314-6091

Email: agillespie@mdcleanenergy.org

