

visualize2045

A LONG-RANGE TRANSPORTATION PLAN FOR THE NATIONAL CAPITAL REGION

UPDATE TO THE EQUITY EMPHASIS AREAS

Wendy Klancher
TPB Transportation Planner

TPB Technical Committee
May 4, 2018



Purpose

- Briefing and request for comments on updated Equity Emphasis Areas (EEAs)
- Review of comments from the Planning Directors Technical Advisory Committee

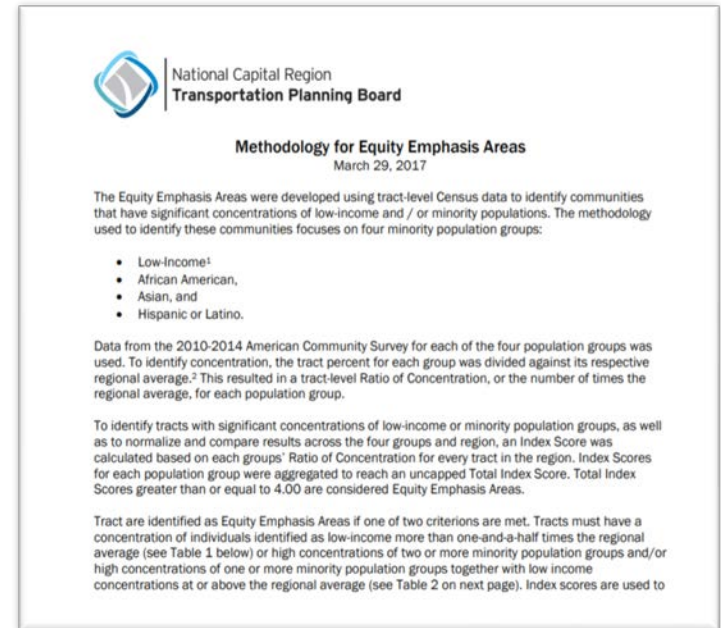
Background

- The TPB adopted EEA methodology in March 2017 to enhance how the long-range plan is analyzed for Title VI and Environmental Justice (EJ) considerations
- Using the TPB-approved methodology, the EEAs were updated with the most recent American Community Survey data
- The EEAs will be used to analyze Visualize 2045 for disproportionate impacts on low-income and minority populations
- TPB staff will update the EEAs with the latest data in conjunction with each major plan update (every 4 years)



TPB-Approved Methodology

- American Community Survey data by Census tract for 4 groups: Low-Income, African-American, Asian, and Hispanic/Latino
- Index scores determined for every tract based on regional averages for the 4 groups
- Index scores are totaled and a tract is an EEA if the total score exceeds established thresholds
- Income is weighted more heavily than race or ethnicity



For more detail: <https://www.mwcog.org/transportation/planning-areas/fairness-and-accessibility/environmental-justice/equity-emphasis-areas/>

EEAs for Visualize 2045

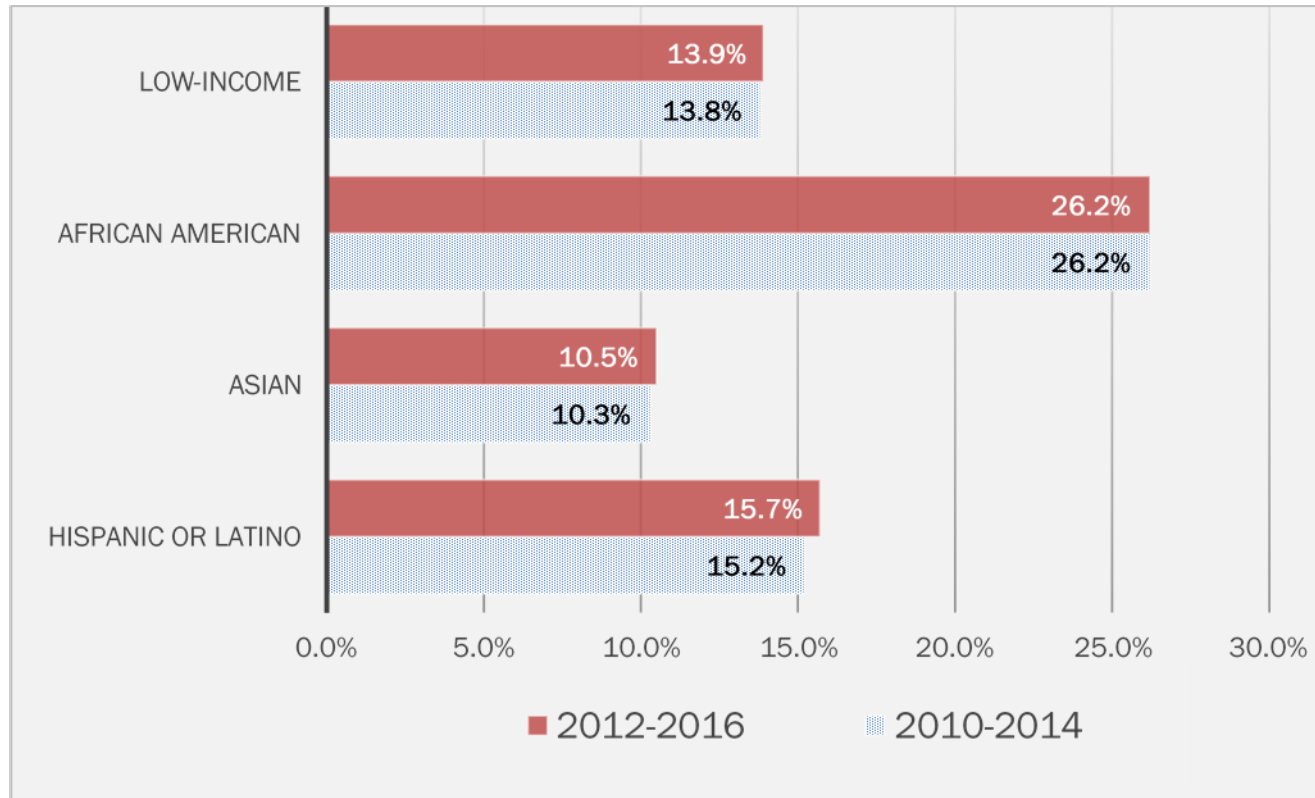
- The original EEA map produced in 2017 used 2010-2014 5-year estimates from the American Community Survey (ACS)
- In preparation for Visualize 2045 analysis, staff updated the EEAs using the latest ACS data - 2012-2016 5-year estimates
- The updated EEA map shows:
 - Some localized changes because values already were close to thresholds
 - Minimal change at the regional level; clusters remain largely the same



Changes in Regional Averages

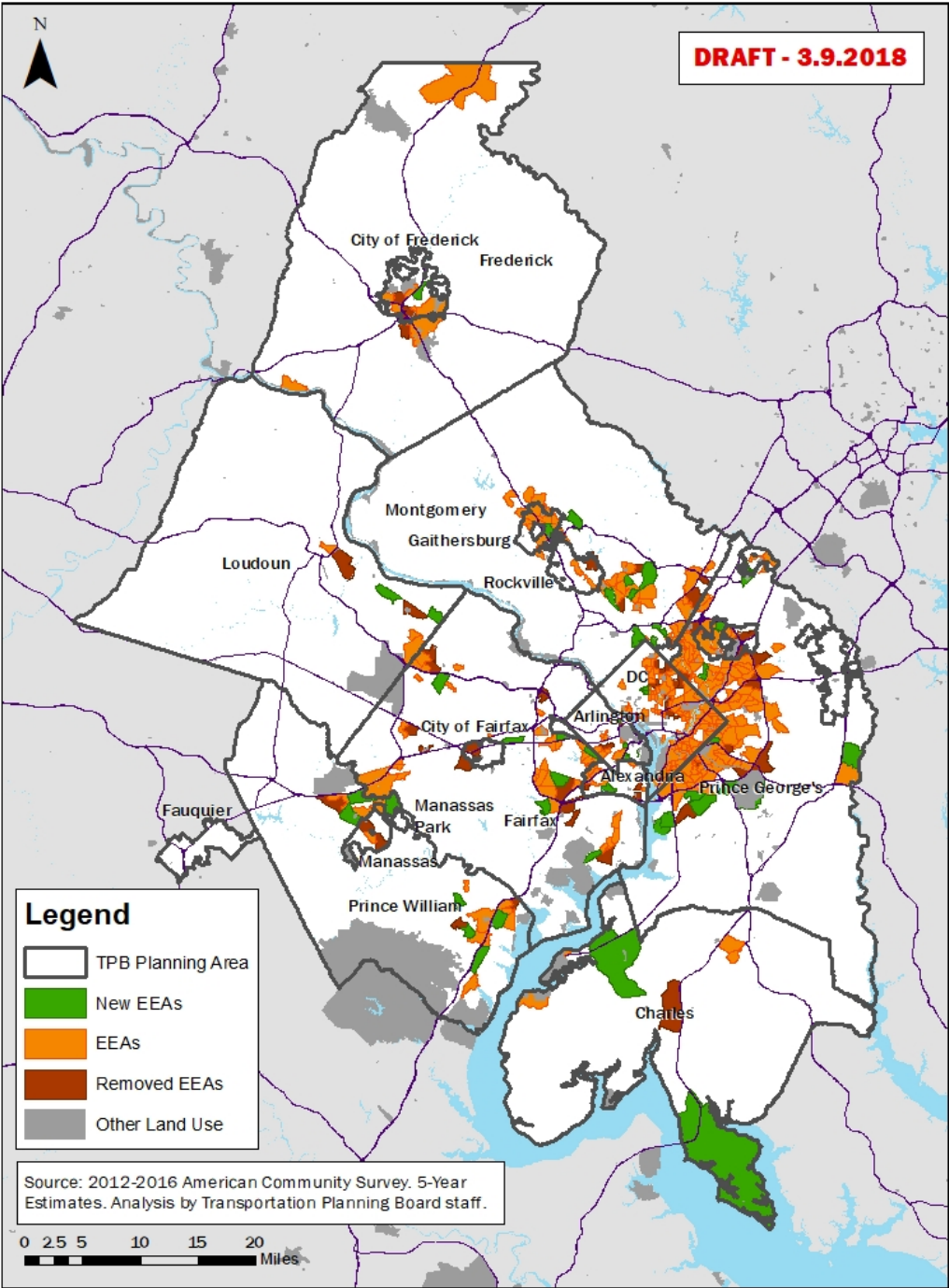
Between American Community Survey datasets

2010-2014 versus 2012-2016 American Community Survey 5-Year Estimates



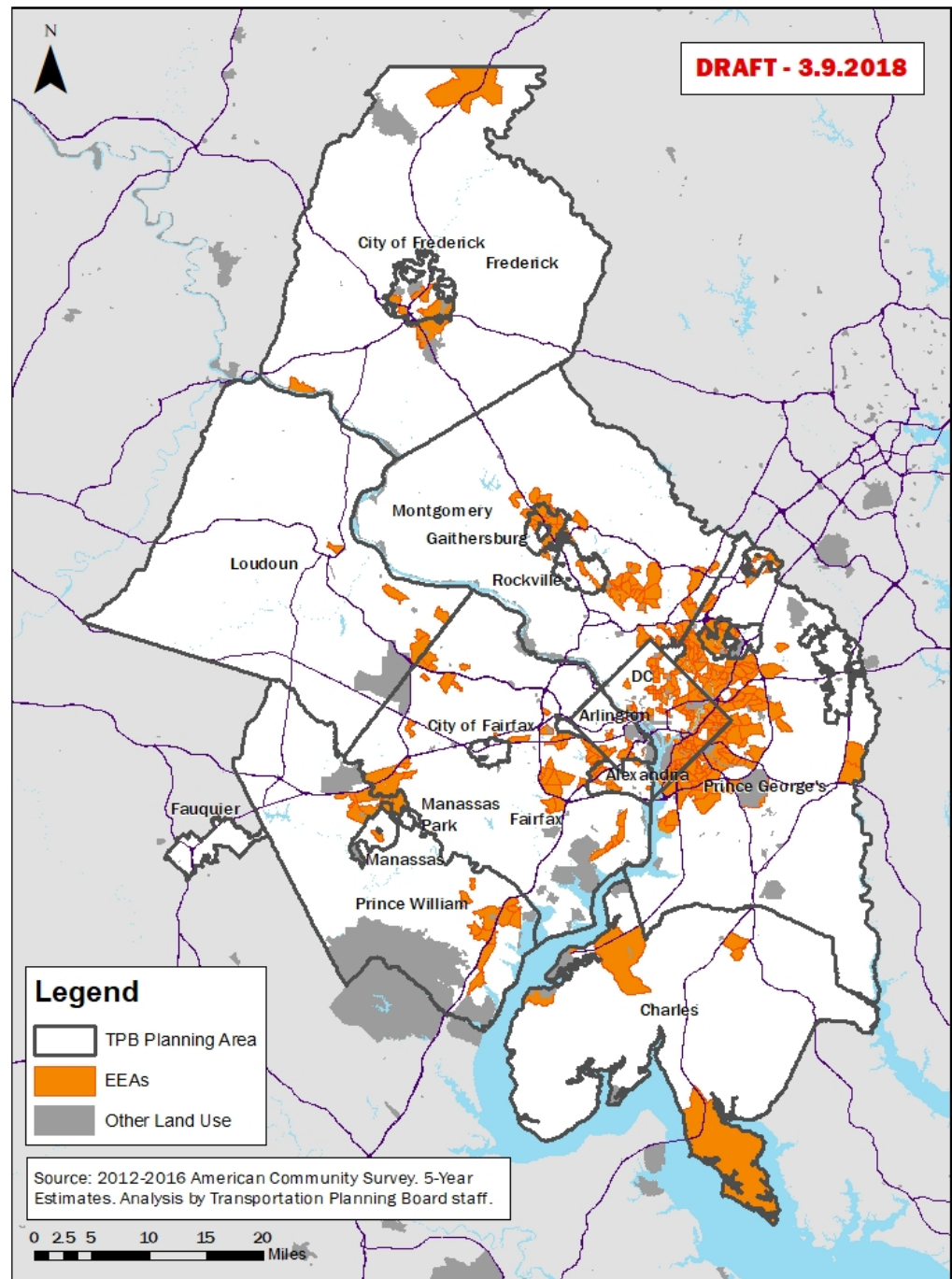
Changes to the EEAs

Between Original and Updated EEAs



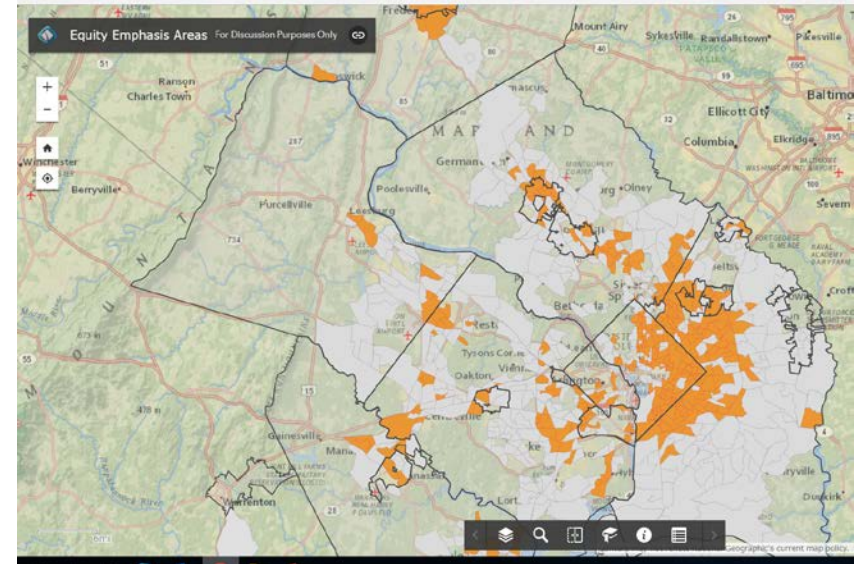
Updated EEAs

Based on 2012- 2016
ACS 5-Year Estimates
and TPB-Approved
Methodology



Next Steps

- Comments from Tech Committee due May 18
- After Tech and Planning Directors' review, staff will revise the online interactive map
- Staff will conduct the EJ analysis of Visualize 2045 and compare regional accessibility and mobility in EEAs versus the rest of the region
- Tech and TPB will be briefed on the results in the Oct/Nov/Dec timeframe



Online interactive map: gis.mwcog.org/webmaps/tpb/clrp/ej/



Wendy Klancher, AICP

Principal Transportation Planner

(202) 962-3321

wklancher@mwkog.org

Sergio Ritacco

Transportation Planner

(202) 962-3232

sritacco@mwkog.org

mwkog.org/tpb

Metropolitan Washington Council of Governments

777 North Capitol Street NE, Suite 300

Washington, DC 20002



National Capital Region
Transportation Planning Board