



Metropolitan Washington
Council of Governments



Mixed Waste Processing (or whatever it's called)

Shawn State

Today



- **Briefly about Pratt**
- **Recovered Fiber Demands**
- **Recovered Fiber Quality**
- **Myths, Issues and Facts**
- **Conclusions**
- **Questions**

Pratt Industries Overview



- **\$1.6 Billion, privately-held company**
- **Recycle 1.6 Million tons of recycled materials annually, saving...**
 - **20+ million trees**
 - **1 million tons of greenhouse gas emissions**
- **5th largest U.S. paper and packaging company - 4,000 employees**
- **Largest 100% recycled containerboard company in U.S.**
- **State of the art alternative energy generation**
- **16 Recycling Centers/MRFs**
- **3 - 100% Recycled Paper Mills...+ Coming Soon - 4th (Valpo)**
- **1 Clean Energy Plant**
- **12 Corrugating Plants**
- **26 Converting Plants**
- **6 Display Facilities**
- **9 Specialty Retail DCs**



Metropolitan Washington
Council of Governments



Our Locations





OUR CUSTOMERS

PRATT INDUSTRIES IS KNOWN BY THE COMPANIES WE KEEP



Curbside Recycling – Traditional MRFs



Shreveport, Louisiana



Greenville, South Carolina



Atlanta, Georgia



Fayetteville, North Carolina



Curbside Recycling – Examples Public/Private Partnerships



New York City



Only paper mill in NYC

Columbus, Georgia



Pratt Equipped,
County Operated

Located @
correctional facility

Denton, Texas



Located at
landfill

Conyers (Atlanta, Georgia)



MSW and
Recycling
Contract

Commercial/Industrial Recycling Facilities



Memphis, Tennessee



Nashville, Tennessee



Rock Hill, South Carolina

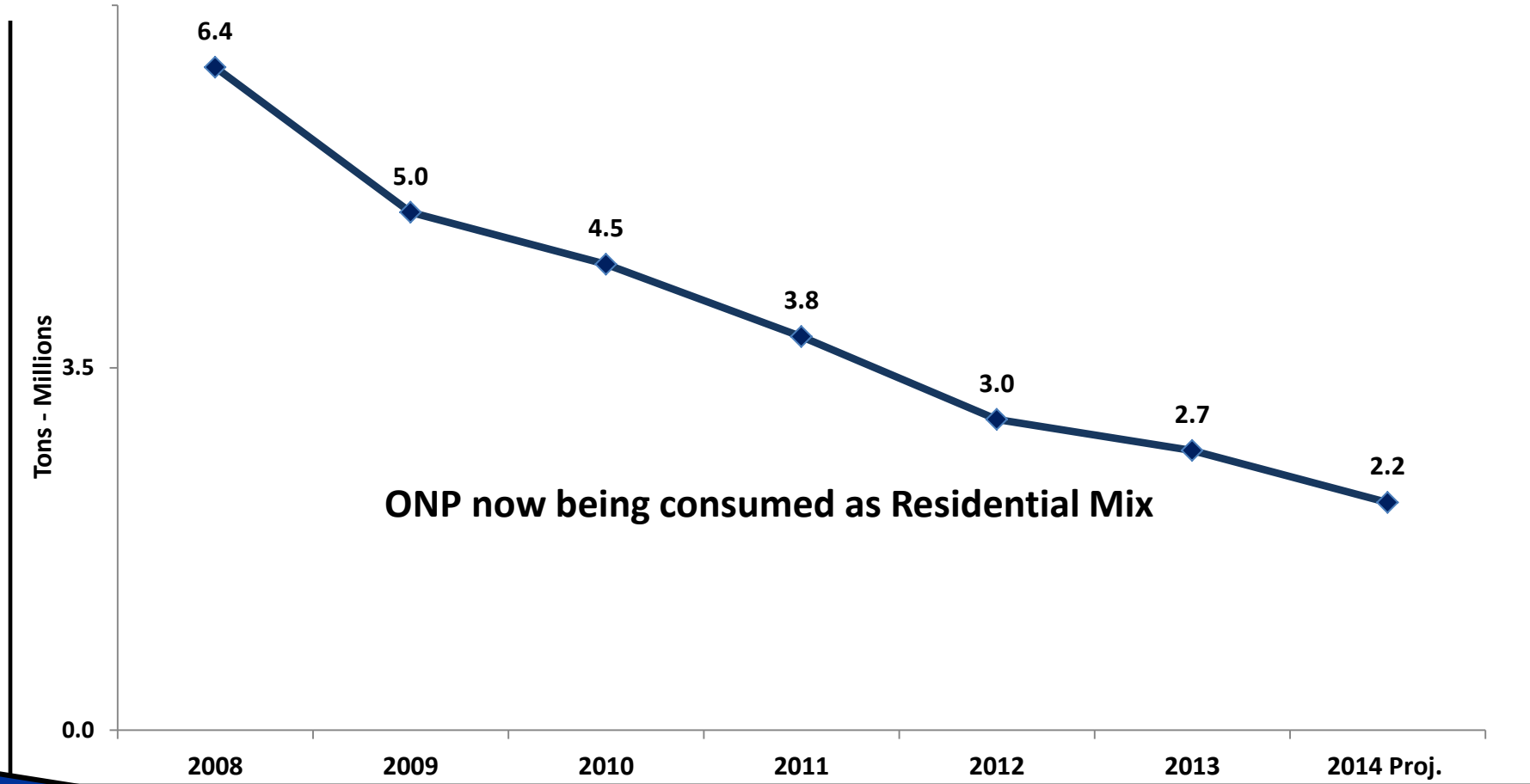


Winston-Salem, North Carolina



ONP - It's NOT Coming back...ever

Tons-Millions - North American Consumption



Global Paper Mill Requirements – Clean, Contaminant Free Recovered Fiber

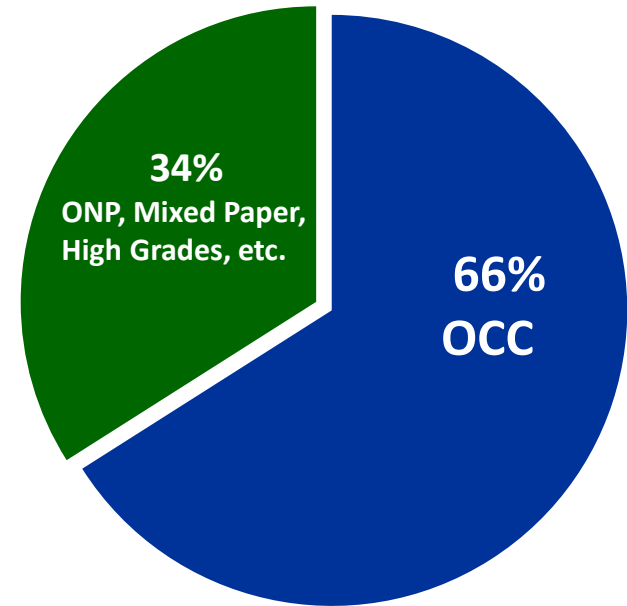


~ 20 Million Tons

~ 30 Million Tons



N.A. Paper Mill Consumption



The need is Quality, Quality, Quality

Mixed Waste Processing??



- Let's be frank...what are we really talking about?

DIRTY MRFs

- Not “Mixed Waste Processing” Facilities
- Not “Advanced Recycling Centers” (ARCs)

You can put lipstick on a pig...
but it's still a pig



Myth: Once recyclables are mixed with solid waste, they can effectively be recovered.

Fact: Paper is easily contaminated and you can't unscramble an egg

You can't make thisinto this



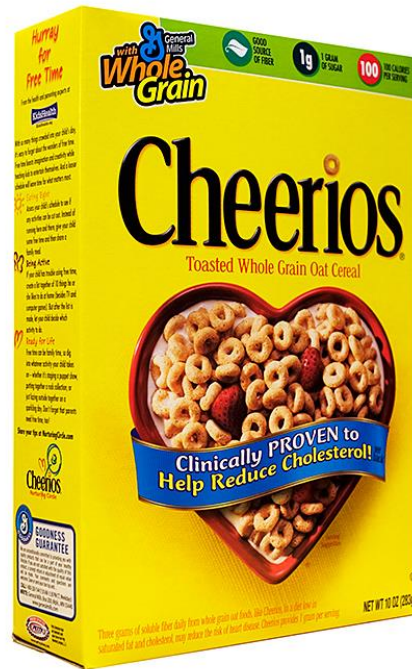
Some of the packaging made from Recovered Fiber



Pizza Boxes



Folding Cartons



Food Service Take-out



A Few of the things that should NOT be part of the recipe for your pizza box



WHY?

Because once an egg is scrambled,
you can't UNSCRAMBLE it



Dirty Little Secrets of Dirty MRFs



Myth: Once recyclables are mixed with solid waste, they can effectively be recovered.

Fact: A recent characterization study the Emerald Coast Utilities Authority (ECUA) revealed the following results:

Number Component Category (% by weight) of 10 Largest Subcategories of MSW

- 1 Soiled Paper Organic 10.8 %
- 2 Food Waste Organic 9.46%
- 3 Corrugated cardboard Paper 6.72%
- 4 Fines 1 to 2 inches Residual 5.44%
- 5 Other plastic films Plastic 5.37%
- 6 Fines <1 inch Residual 5.23%
- 7 Diapers and sanitary waste Organic 3.81%
- 8 Yard Waste Organic 3.58%
- 9 Pasteboard Paper 2.93%
- 10 Clear PET #1 Plastic 2.73%



Metropolitan Washington
Council of Governments

Dirty Little Secrets of Dirty MRFs



Myth: Separation Technology has advanced significantly to enable contamination-free recovered materials

Fact: No leap-frog technology has emerged in the past 20 years. Still use conveyors, optical sorting, screens, trommels, with lots of hand sorting for quality.

- Slight “evolution” only; nothing revolutionary...don’t get sucked in with terms like “optical sorters” and “ballistic separators”



Metropolitan Washington
Council of Governments

Dirty Little Secrets of Dirty MRFs



Myth: Recovery rates from Dirty MRFs (or Mixed Waste processing facilities) are pretty high

Fact: Contaminants, Prohibitives and Outthrows are just taking a MUCH longer ride to the landfill, with a bigger carbon footprint, and dirty MRFs are counting these tons as “diversion”.





Metropolitan Washington
Council of Governments

Dirty Little Secrets of Dirty MRFs



Myth: Incineration, fuel pellets, and other waste to energy “counts” as recycling.

Facts: The value achieved from using commodities such as paper to create energy pales in comparison to the commodity value of recycling and reusing it.



Myth: The one-bin collection system ensures 100% household participation.

Facts: YEAH RIGHT!

(and by the way, what are we teaching the next generation about recycling)



Metropolitan Washington
Council of Governments

Dirty Little Secrets of Dirty MRFs



Myth: The One Bin Program results in high recycling rates.

Fact: Covanta Projected Recover Rate - Indianapolis

- 50% - 58% of incoming Paper will be recycled
 - AF & PA numbers show 63.5% of all Paper is currently being recycled.
- 25% of Plastic will be recycled
- 0% (ZERO) of Glass will be recycled

- **TOTAL PROJECTED RECOVERY RATE - 18 - 22%...remaining material will be incinerated**

****\$16.0 MM dollars of recyclable material will be incinerated.****



Metropolitan Washington
Council of Governments

Dirty Little Secrets of Dirty MRFs



Myth: *“You can put it in your green can, and magically it all gets bundled and sold into the commodities market.”* – Mayor Todd Strange – City of Montgomery, Alabama

Facts: Paper commingled “wadded up” with a tin can and plastic bottle **CAN BE** separated with today’s sorting technology. (Single Stream -or- Two Bin Program)

Facts: Paper commingled “wadded up” with a plastic bottle, tin can, last night’s dinner, and last night’s cat poop, **CANNOT** be separated with today’s sorting technology. (One Bin Program)

DO THE “GRADE SCHOOL” TEST



Myth: Industry standards say mills can accept 5% contamination in bales of paper

Facts:

- P.S.I. standards state: “recovered paper stock must be free of food debris, medical or hazardous wastes, an poisonous or other hazardous substances or liquids”
- In certain paper grades, “prohibitives” can be “up to” 2%, but prohibitives in most paper grades are not permitted at all, or are allowed at 1/2 of 1% or 1%.

Acceptable Recovered Fiber



Unacceptable Recovered Fiber



Conclusion

I love my daughter's cat



But keep his “business” separated from recyclable materials



Metropolitan Washington
Council of Governments



Thank You

ssstate@prattindustries.com