

NATIONAL CAPITAL REGION FREIGHT PLAN

Jon Schermann
Transportation Planner

Transportation Planning Board Meeting
July 20, 2016



Overview

- The draft Plan was reviewed during the June meeting
- Released for 30 day public comment – no comments received
- No substantive changes made to the plan since June



The NCR Freight Plan

Two separate documents:

Full Document	Executive Summary
<p>Seven sections and two Appendices</p> <ul style="list-style-type: none">• Introduction• The Multimodal Freight System• Freight Demand• Freight Trends and Issues• Regional Freight Policies• National Capital Region Projects Important to Freight• Recommendations and Next Steps	<p>Summary review of the full document</p> <ul style="list-style-type: none">• Summary information from sections of the Plan• No project lists or appendices
118 pages	24 pages



Topic Areas Addressed in Freight Policies

- Prioritized advancement of freight projects
- State of good repair
- Best practices
- Bottlenecks
- Rail options
- Environmental justice
- Economic development
- Activity centers
- Safety education, enforcement, and engineering

- Hazardous materials routing
- Hazardous materials information sharing
- Collaboration regionally and with the private sector
- Performance measurement
- Sustainability
- Land use/rail capacity collaboration
- New technologies and emerging business practices



Freight Plan Recommendations

- Active freight subcommittee including private sector participation
- “Freight Around the Region” outreach
- Regional freight forums
- Data analysis and sharing
- Coordination with partners/ stakeholders
- MAP-21/FAST activities including performance measurement

- Collaboration with local jurisdictional planning including infrastructure and economic development considerations
- Monitoring of autonomous and connected vehicle developments
- Monitoring of industry trends
- Progress tracking



Staff Recommendation

- Adopt resolution R1-2017 approving the National Capital Region Freight Plan.



Jon Schermann

Transportation Planner

(202) 962-3317

jschermann@mwkog.org

mwkog.org/TPB

Metropolitan Washington Council of Governments

777 North Capitol Street NE, Suite 300

Washington, DC 20002



National Capital Region
Transportation Planning Board

Background Slides

The following slides are background material and will not be covered during the presentation...



Why do Freight Planning?

- Freight transportation is vital to the economy of the Region and to the quality of life of its residents
- Hundreds of millions of tons of freight worth \$ billions move over the Region's roadways and railways and pass through its airports each year
- Growing employment, population, and wealth will continue to drive demand for freight
- Economic growth will result in greater quantities of goods moving into, out of, and through the Region
- Evolving supply chain practices, expansion of the Panama Canal, and increasing urbanization are some of the factors impacting freight flows
- Ensuring the safe transport of freight is a primary concern of the TPB



Top Commodities

Top Commodities by Weight

Rank	Commodity Class	Total (thousands of tons)	Cumulative Share
1	Gravel & crushed stone	41,277	19%
2	Waste & scrap	32,319	35%
3	Nonmetallic mineral products	25,212	47%
4	Petroleum products	14,421	53%

Top Commodities by Value

Rank	Commodity Class	Total (millions of \$)	Cumulative Share
1	Electronic & electrical equip.	31,848	13%
2	Machinery	27,578	25%
3	Mixed freight	22,584	34%
4	Pharmaceutical products	19,225	42%



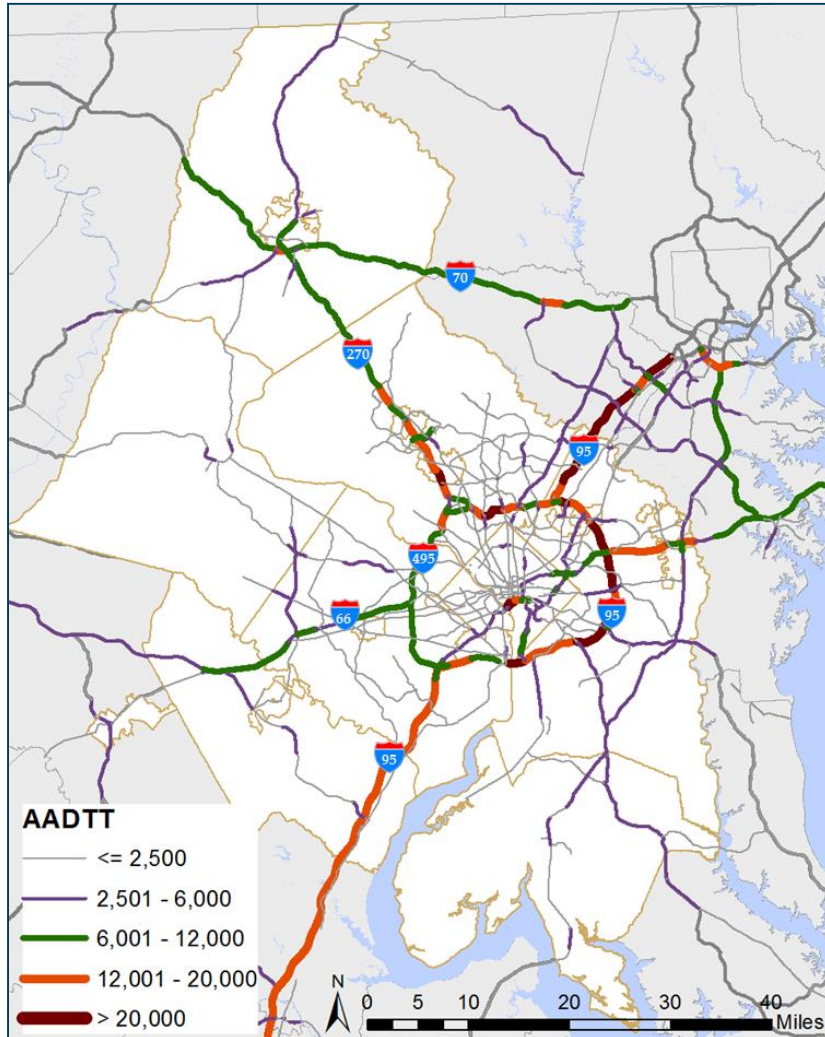
The NCR Freight Plan...

- Builds on the 2010 edition
- Supports MAP-21 and FAST requirements
- Is a technical reference and a guide to future TPB planning activities
- Describes the role of freight in the Region
- Defines a regional freight-significant network
- Describes the drivers of freight demand and resulting freight flows
- Identifies significant freight issues
- Includes regional freight policies
- Identifies projects that are important to goods movement
- Recommends future freight planning actions

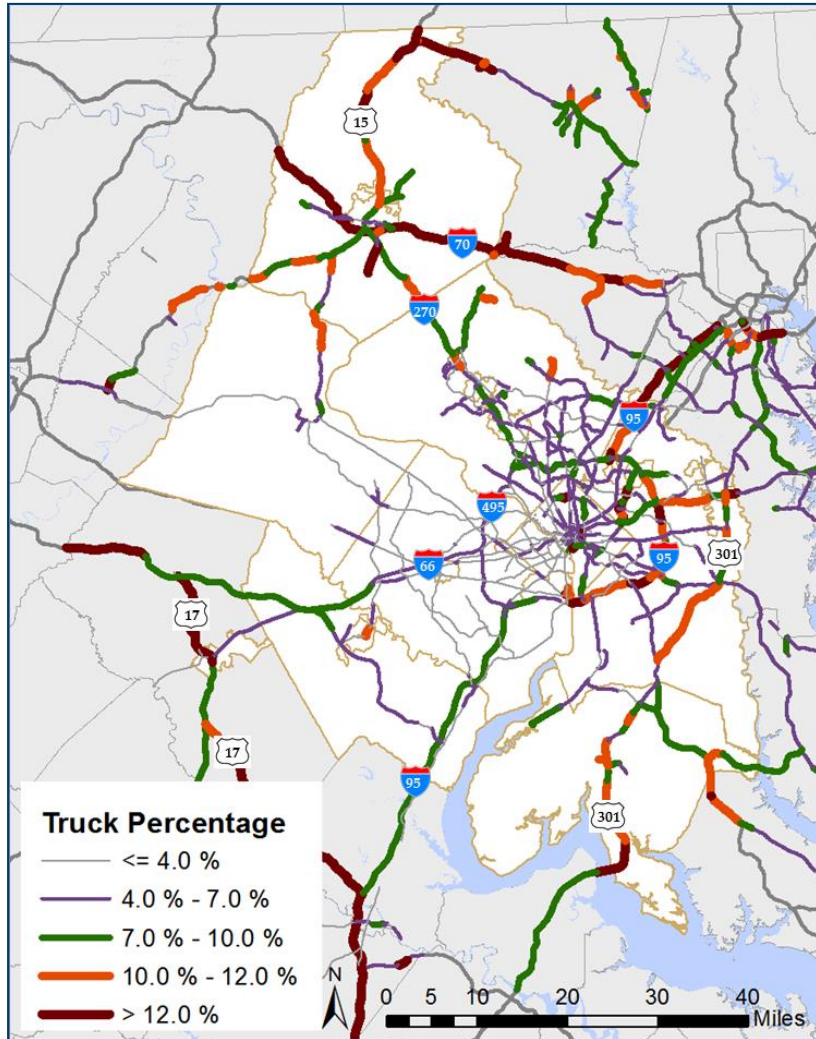


Freight Transportation System: Roadways

Truck Volumes



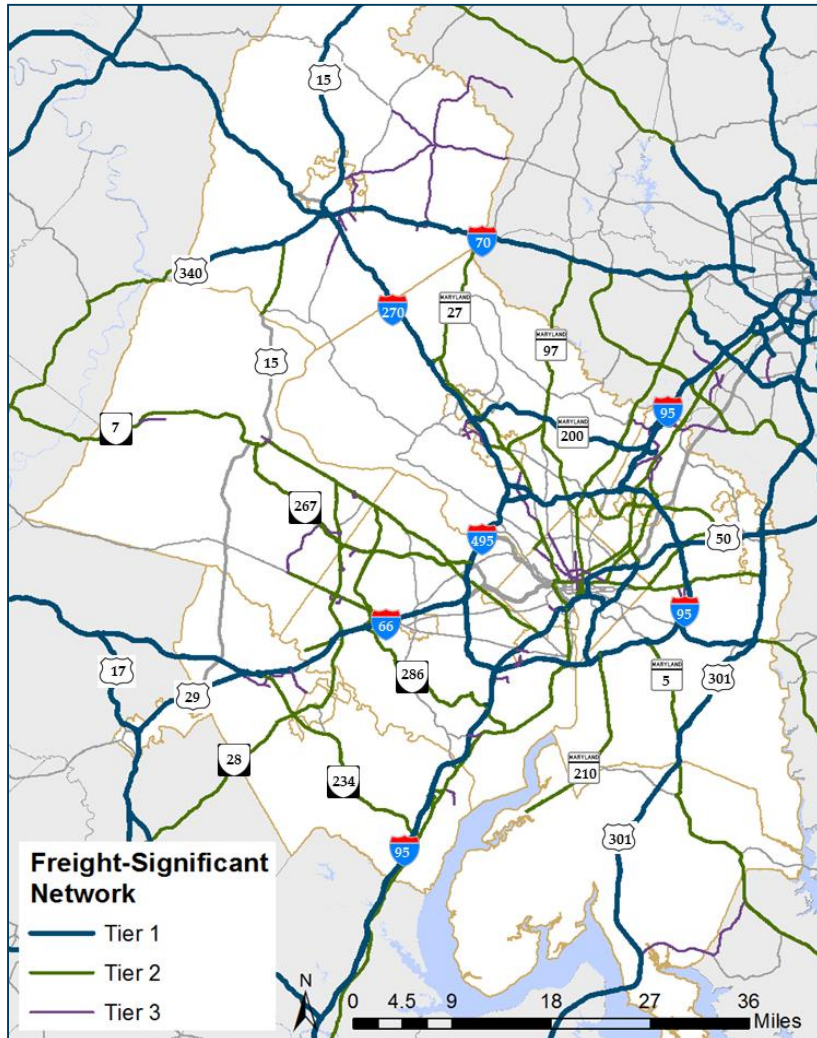
Freight Transportation System: Roadways



- Truck Percentages



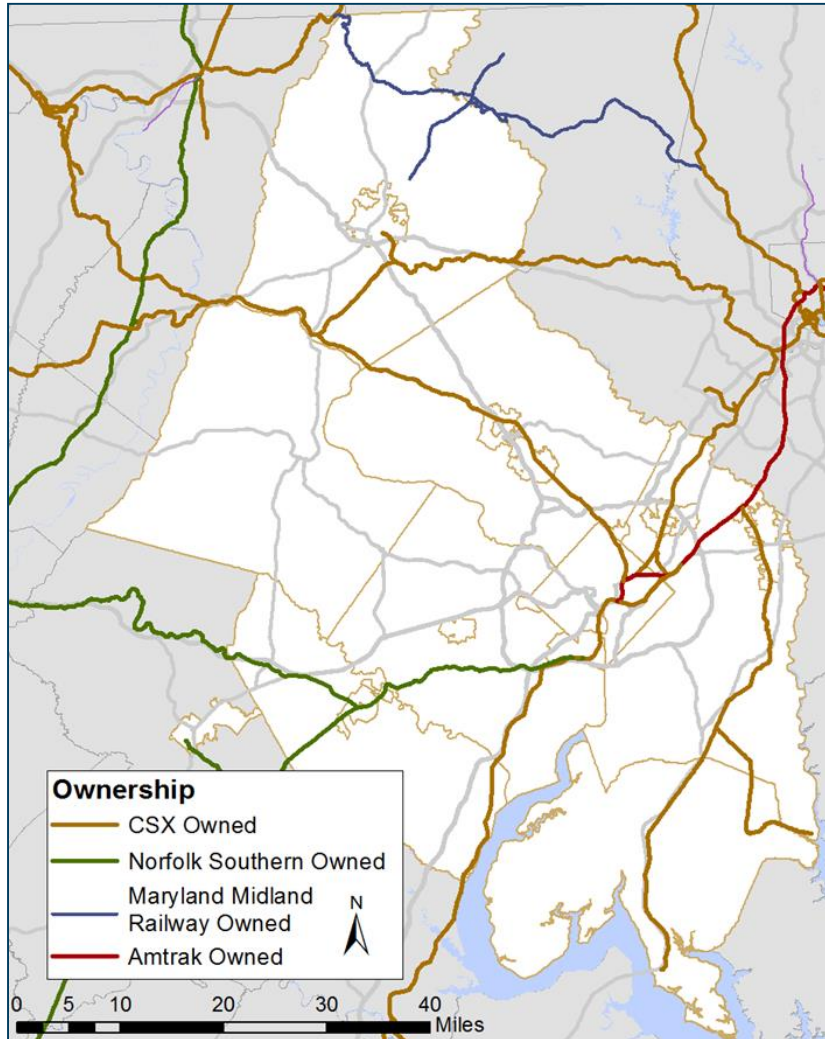
Freight-Significant Network



- **Tier 1:** state-designated truck routes, interstates, and other high volume roadways
- **Tier 2:** allows trucks to permeate the Region and provide access to important freight generators and attractors
- **Tier 3:** last mile connectivity



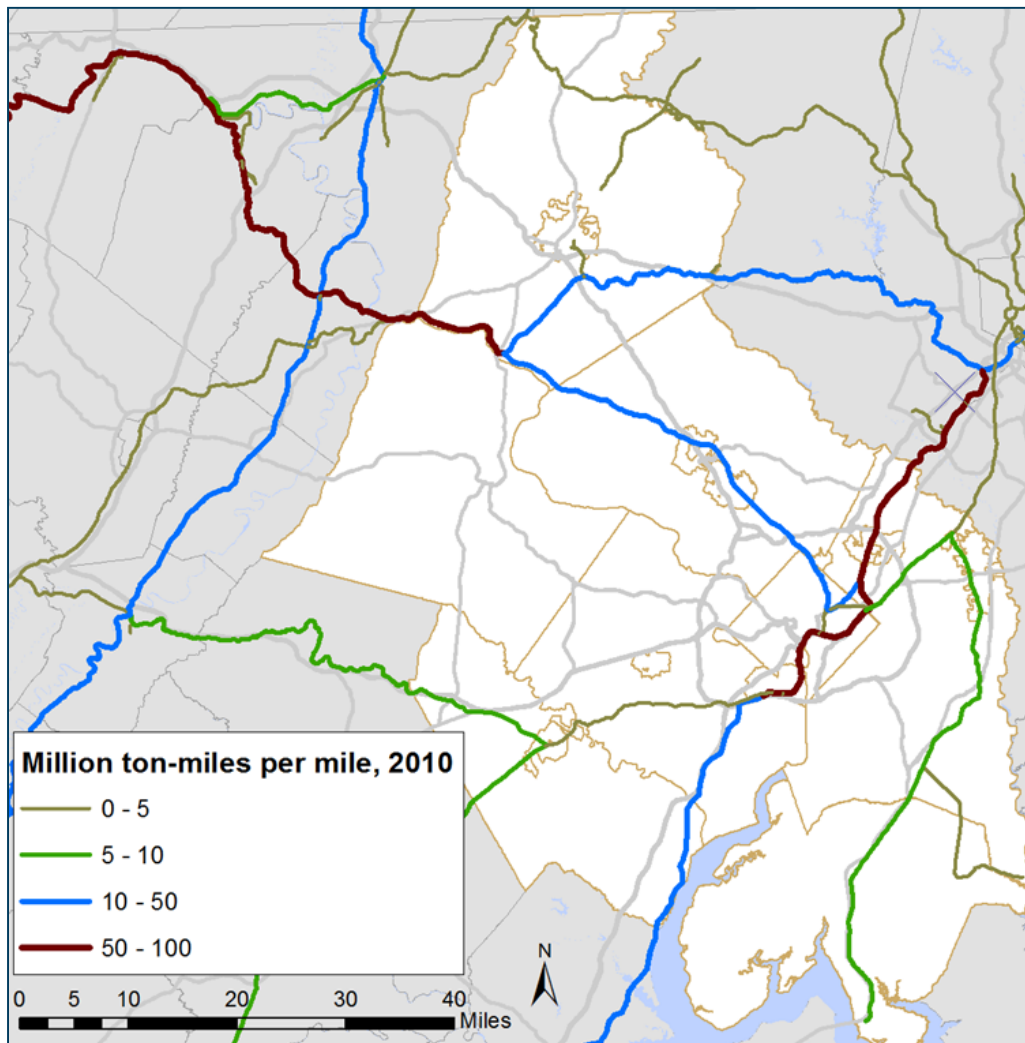
Freight Transportation System: Railroads



- Rail Ownership



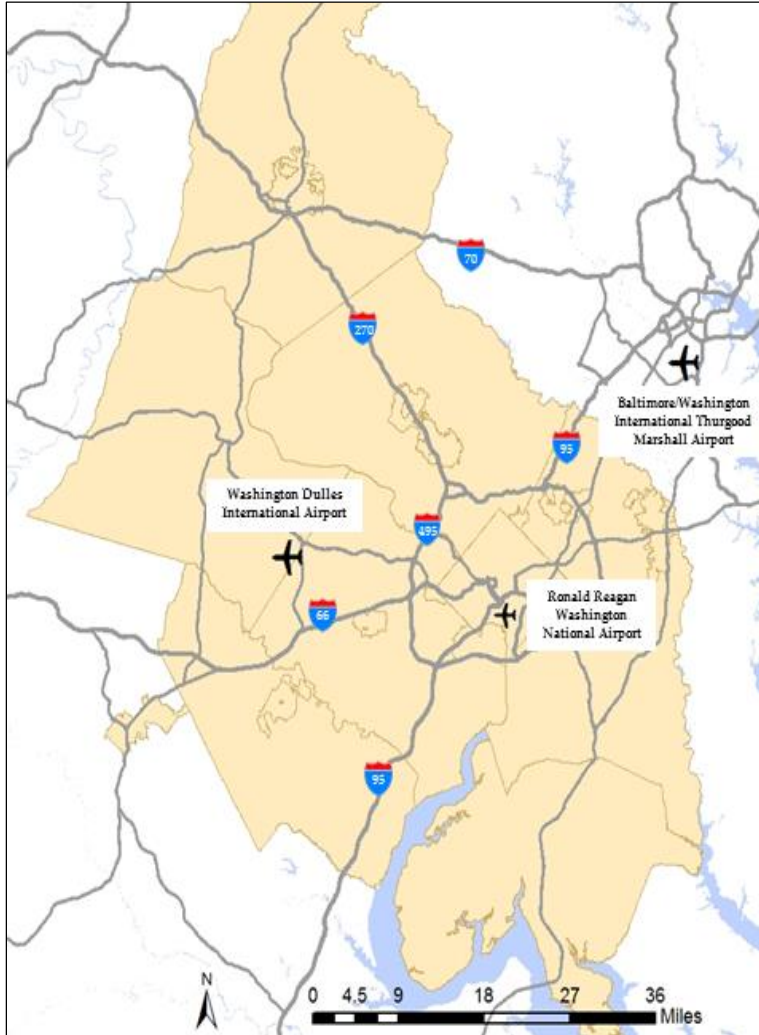
Freight Transportation System: Railroads



- Rail Density



Freight Transportation System: Airports



- Dulles and BWI handle nearly all reported air cargo tonnage
- 23rd and 36th respectively according to ACI rankings of North American cargo airports



Rail Safety

- TPB has expressed particular concerns on the topic of rail safety
 - Recent incidents - such as the May 1 CSX derailment –highlight the need for improved safety on the freight rail system
- The Freight Plan addresses this through the regional freight policies
- The Plan also provides an overview of the freight rail safety regulatory structure



Regional Freight Policies

The Transportation Planning Board...

1. supports the prioritized advancement of freight-related transportation projects that provide maximum value, efficiency, and safety with particular emphasis on those that improve freight access to activity centers.
2. supports investments that maintain a state of good repair for the Region's freight transportation system.
3. supports the use of best practices for safety, engineering, and maintenance, of freight-related transportation infrastructure.



Regional Freight Policies

The Transportation Planning Board...

4. supports the alleviation of roadway bottlenecks where feasible to improve travel times and reliability for trucks and passenger vehicles.
5. supports maximizing opportunities to expand transportation options, address roadway congestion, and reduce pollution by increasing the use of passenger and freight rail.
6. supports the consideration of potential social, economic, and environmental effects of freight-related programs, policies, and activities on minority populations, low-income populations, and people with disabilities.



Regional Freight Policies

The Transportation Planning Board...

7. recognizes freight's role in economic development and supports efforts to maximize the use of important economic drivers, including airports, ports, and intermodal facilities serving the Region's residents and businesses.
8. supports the safe and community-friendly accommodation of freight deliveries within the Region's activity centers.
9. supports improvements in truck safety using education, enforcement, and engineering strategies.



Regional Freight Policies

The Transportation Planning Board...

10. supports efforts to route hazardous materials away from the National Capital Region; for hazardous materials that must be transported to, from, within, and through the Region, the TPB supports the selection of the safest and most secure modes and routes.
11. encourages information sharing on explosive, toxic by inhalation, and radioactive materials being shipped to, from, within, and through the Region, including real-time notifications and long-term planning information.
12. supports robust first responder training and exercise activities regarding freight in general and hazardous materials transport in particular.



Regional Freight Policies

The Transportation Planning Board...

13. supports collaboration among agencies and with the private sector on freight planning and operations concerns to support mutual goals.
14. supports the proactive analysis of freight-related performance measures in the context of overall regional performance measurement to identify lessons learned and promote regional goals.
15. promotes sustainable methods of freight operations that are sensitive to environmental, cultural, and community resources.



Regional Freight Policies

The Transportation Planning Board...

16. encourages collaboration among transportation planners, land use planners, private railroads, elected officials, and other stakeholders to find creative ways to facilitate community-beneficial land use development (residential, commercial, or industrial as appropriate) while providing space for necessary future rail expansion along key rail corridors.
17. supports the review and study of new freight-related technologies, emerging business practices, and evolving commodity mixes and mode shares to advance regional goals.



Recommendations and Next Steps

Actions Related to Maintaining and Strengthening the Regional Freight Planning Process

- Continue to Support the TPB Freight Subcommittee
- Maintain and Strengthen Private-Sector Participation in the TPB Freight Subcommittee
- Create Opportunities to Hold Joint Meetings with Other TPB Subcommittees
- Develop “Freight Around the Region” Brochures in Coordination with Member Jurisdictions



Recommendations and Next Steps

Actions Related to Maintaining and Strengthening the Regional Freight Planning Process (continued...)

- Organize Periodic Regional Freight Forums
- Collect and Analyze Freight Data and Make Available to Member Jurisdictions and the Public
- Continue Coordination with Federal, State, Local, and Private-Sector Freight Partners
- Coordinate TPB's MAP-21/FAST Freight-Related Activities – Including Performance Measures



Recommendations and Next Steps

Actions Related to Maintaining and Strengthening the Regional Freight Planning Process (continued...)

- Identify and Communicate Freight-Related Infrastructure Issues to Member Agencies to Address in their Planning and Programming Activities
- Strengthen Relationships with Local Jurisdiction Planners
- Highlight Economic Development Aspects of Freight with Local Jurisdiction Planners



Recommendations and Next Steps

Strategic Regional Freight Planning Activities

- Identify and Communicate Freight-Related Infrastructure Issues to Member Agencies to Address in their Planning and Programming Activities
- Strengthen Relationships with Local Jurisdiction Planners
- Highlight Economic Development Aspects of Freight with Local Jurisdiction Planners
- Monitor Developments of Autonomous and Connected Freight Vehicles



Recommendations and Next Steps

Strategic Regional Freight Planning Activities (continued...)

- Monitor Key Economic and Industry Trends Impacting Goods Movement
- Monitor the Development of New and Emerging Freight-Relevant Data Sources and Incorporate them into Transportation Planning Activities as Appropriate
- Provide Information to the TPB and Freight Stakeholders on the Status or Progress on this Plan's Identified Freight Policies When Such Information Becomes Available

