



Financially Constrained
**Long-Range
Transportation Plan**
For the National Capital Region

CLRPP 2015

BRIEFING ON PROPOSED ADDITIONS AND CHANGES

Additions and Changes to Projects Proposed
for Inclusion in the 2015 CLRPP Update

January 23, 2015

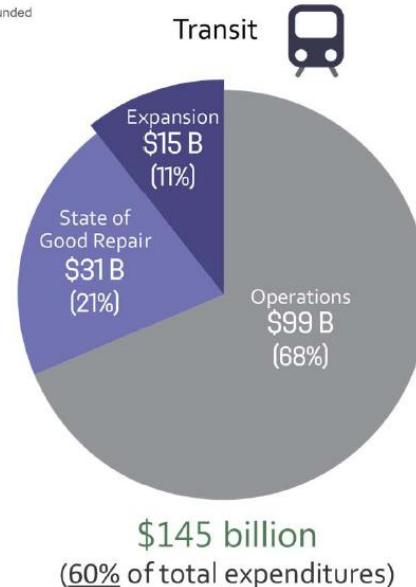
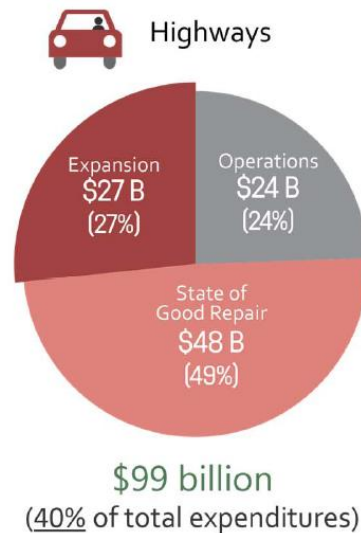
Travel Forecasting Subcommittee

What is the CLRP?

- Federally required long-range transportation plan
- Includes all regionally significant highway, bridge, and transit projects currently planned through 2040
- Funding must be “reasonably expected to be available” to build, operate, and maintain the planned system
- Must conform with federal air quality standards

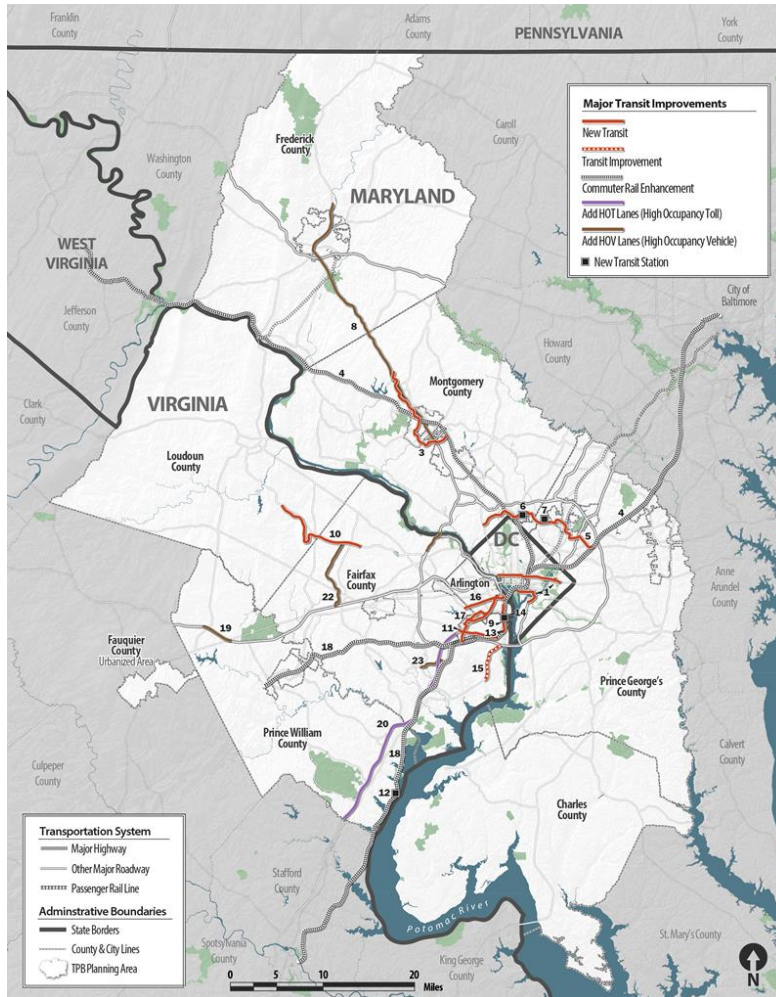
What's Already in the CLRP?

- **500+** regionally significant highway, bridge, transit, bicycle, and pedestrian improvement projects
- **1,188 new lane-miles** of roadway (7% increase from today)
- **44 new miles** of rail transit (15% increase from today)
- **\$244 billion** in spending

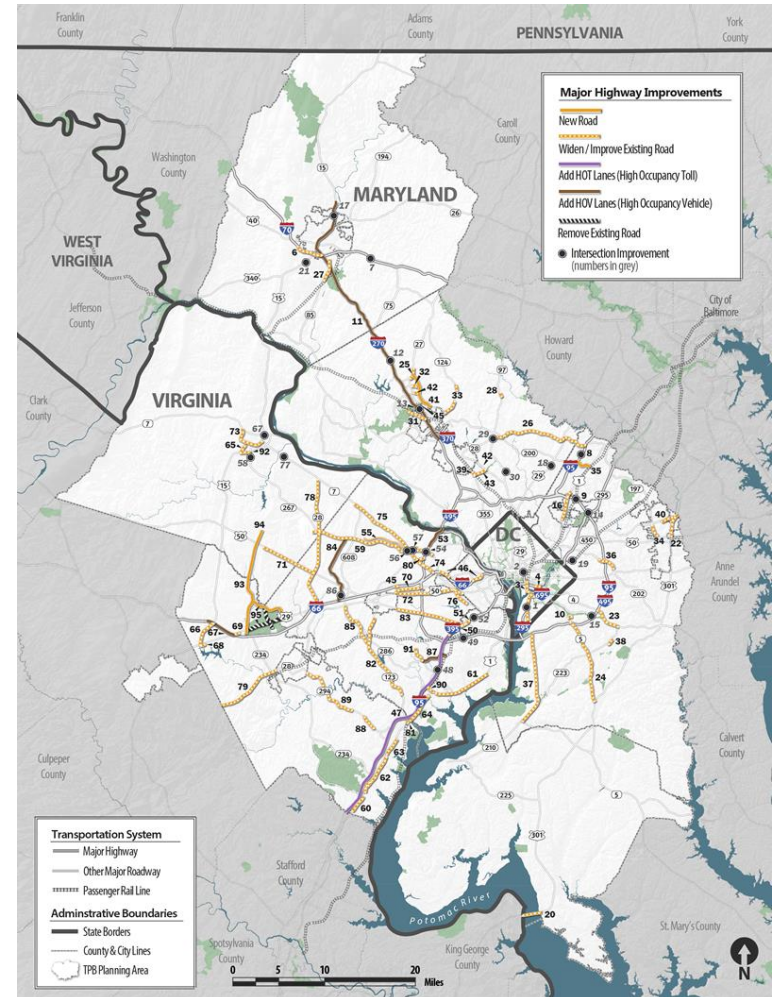


What's Already in the CLRP?

Major Transit Improvements

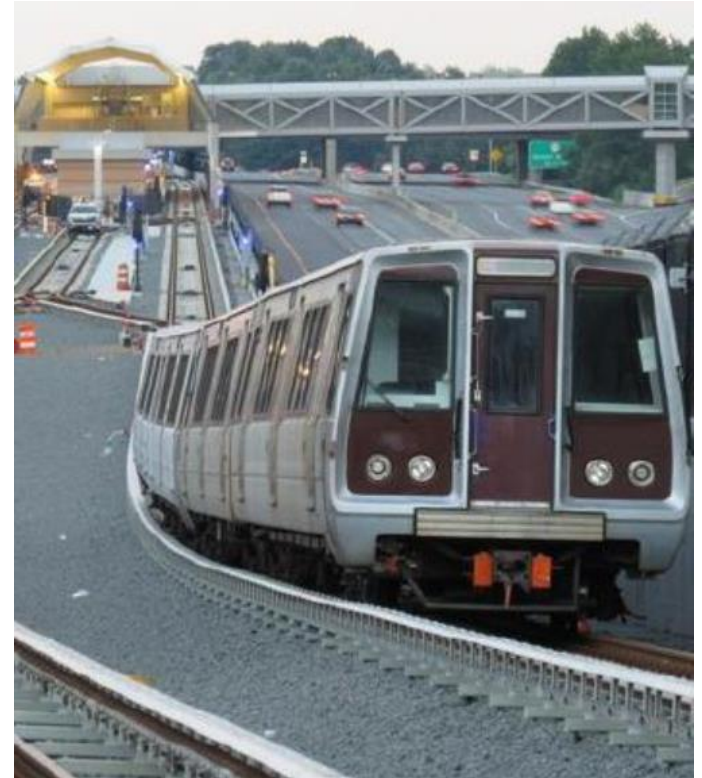


Major Highway Improvements



What's Already in the CLRP?

- Silver Line, Phase II
- Corridor Cities Transitway (CCT)
- I-270/US 15 Corridor
- Purple Line
- DC Streetcars
- South Capitol Street Bridge

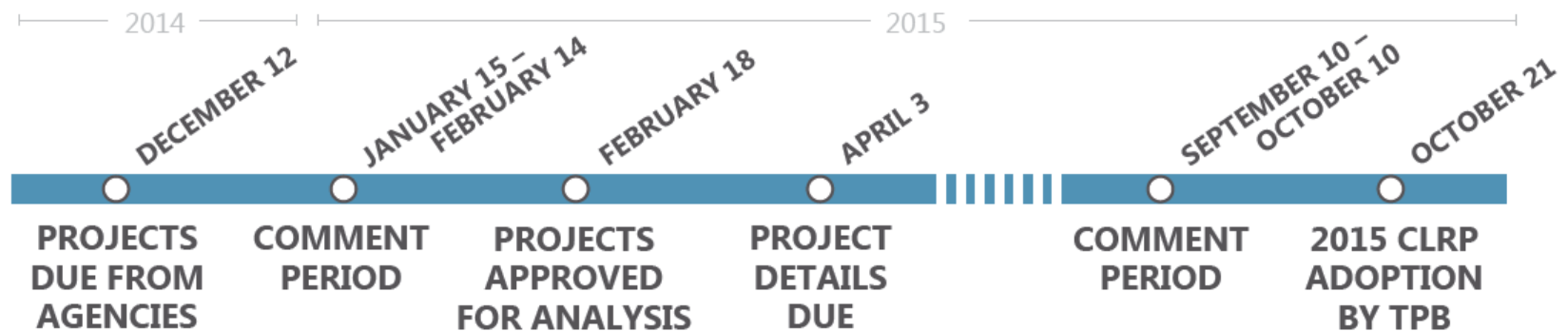


For a complete listing of projects, visit www.mwcog.org/CLRP/projects.

2015 CLRP Update

- Six major new projects or changes to existing projects submitted by VDOT and DDOT
- Projects to be approved for Air Quality Conformity Analysis and Performance Analysis on February 18

SCHEDULE FOR DEVELOPMENT & ADOPTION OF THE 2015 CLRP UPDATE



Find the complete 2015 CLRP update schedule at www.mwcog.org/CLRP2015.

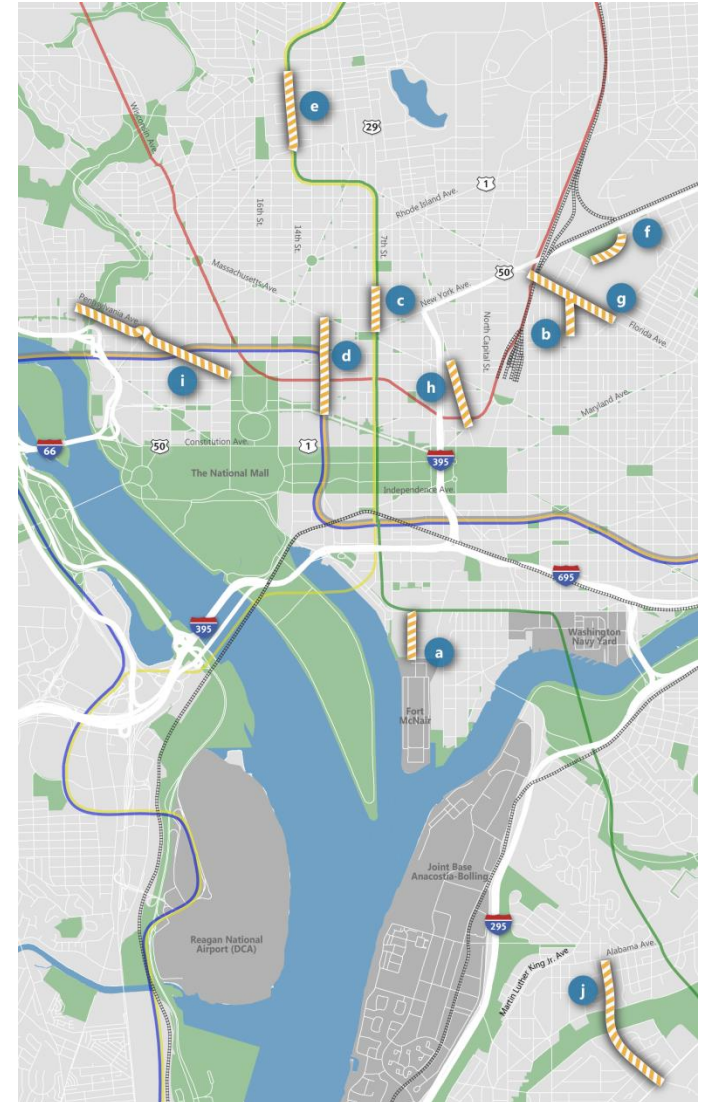
2015 CLRP Update: Additions and Changes

District of Columbia

Dedicated Bike Lanes, Citywide

Length: 9 miles
Complete: 2015
Cost: \$470,000

- a) 4th St. SW, M St. to P St. - 4 to 2 lanes
- b) 6th St. NE, Florida Ave. to K St.- 2 to 1 lane
- c) 7th St. NW, New York Ave. to N St. - 4 to 2 lanes
- d) 12th St. NW, Penn. Ave. to Mass. Ave. - 4 to 3 lanes
- e) 14th St. NW, Florida Ave. to Columbia Rd. - 4 to 2 lanes
- f) Brentwood Pkwy. NE, 6th St./Penn St. to 9th St. - 4 to 2 lanes
- g) Florida Ave. NE, 2nd St. to W. Virginia Ave. - 6 to 4 or 5 lanes
- h) New Jersey Ave. NW, H St. to Louisiana Ave. - 4 to 2 lanes
- i) Pennsylvania Ave. NW, 17th St. to 29th St. - 4/6 to 2 or 4 lanes
- j) Wheeler Rd. SE, Alabama Ave. to Southern Ave. - 4 to 2 lanes



2015 CLRP Update: Additions and Changes

Virginia

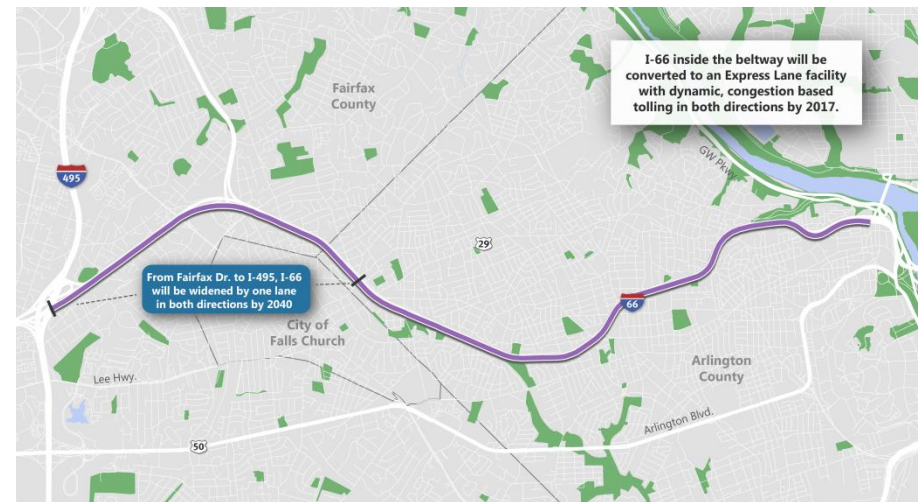
I-66 Corridor Improvements inside the Beltway US Route 29 in Rosslyn to I-495

Length: 10 miles

Complete: 2017 (tolling, multimodal), 2040 (widening)

Cost: \$75-100 million

- Convert I-66 to a managed express lanes facility with dynamic, congestion-based tolling for all vehicles with less than 3 occupants in both directions, during peak periods only by 2017
- Implement enhanced bus service and complete elements of the bicycle and pedestrian network by 2017
- Widen from 2 to 3 lanes in both directions between Fairfax Dr. and I-495 by 2040.

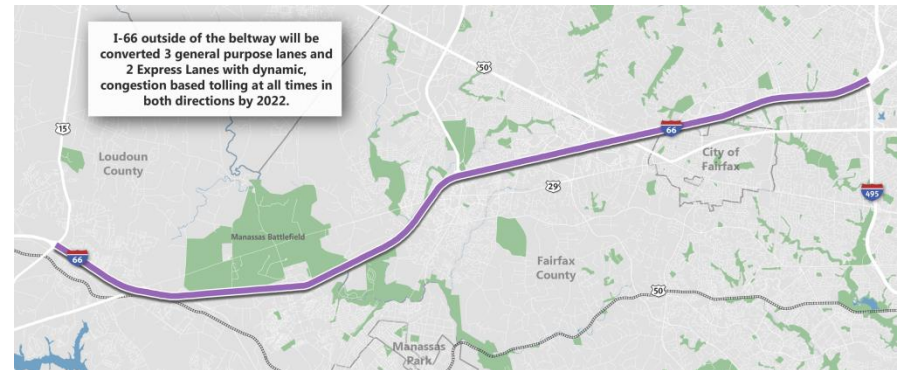


2015 CLRP Update: Additions and Changes

I-66 Corridor Improvements outside the Beltway I-495 to US Route 15 in Prince William County

Length: 25 miles
Complete: 2022
Cost: \$2-3 billion

- Reconfigure I-66 to have 2 managed express lanes and 3 general purpose lanes in each direction.
- Express lanes use dynamic, congestion-based tolling for vehicles with less than 3 occupants at all times to maintain free-flow conditions
- New high-frequency bus service and construction of new or expanded commuter park-and-ride lots
- Two alternatives for access and egress points between the general purpose and express lanes will be analyzed separately



2015 CLRP Update: Additions and Changes

Project Removals

District of Columbia

- Benning Road Streetcar Spur
from Benning Rd., to Minnesota Ave. Metro Station
 - In CLRP since 2014

Virginia

- Columbia Pike Streetcar
from Skyline Center to Pentagon City
 - In CLRP since 2008
- Crystal City Streetcar
from Pentagon City Metro Station to Four Mile Run/Alexandria City Line
 - In CLRP since 2011

2015 CLRP Update: Additions and Changes

For complete project descriptions, and a listing of all proposed additions and changes, visit www.mwcog.org/CLRP2015.

Comment on Additions and Changes

- Find all documents available for public comment at www.mwcog.org/TPBcomment.
- Submit comments:
 - On the web at www.mwcog.org/TPBcomment
 - By email at TPBcomment@mwkog.org

- **In writing:**

Chairman Phil Mendelson
National Capital Region Transportation Planning Board
777 North Capitol Street, NE Suite 300
Washington, DC 20002-4239

- **Deadline is February 14, 2015.**