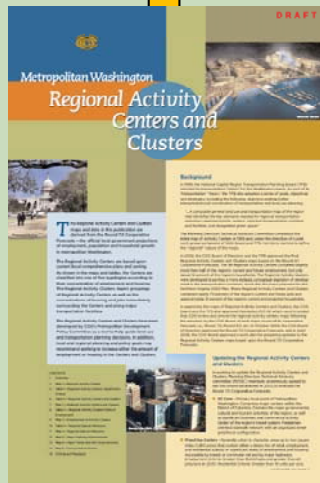
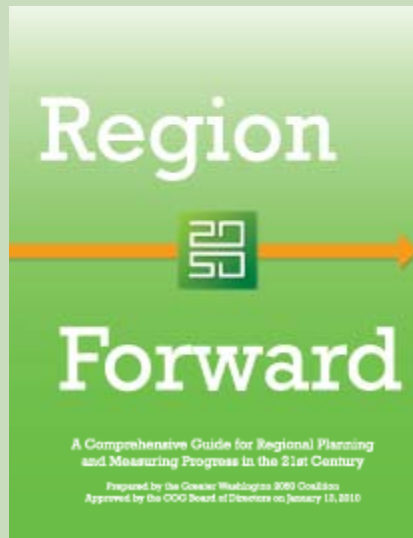
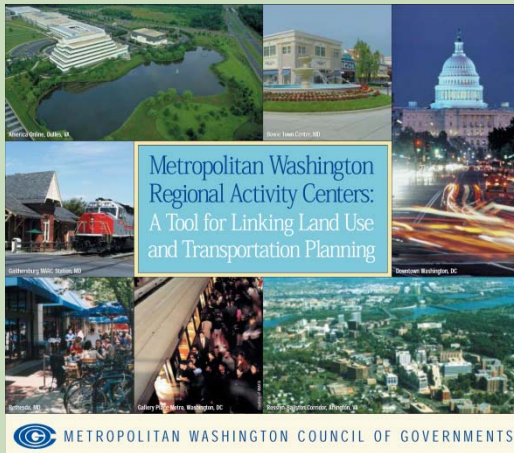


Round 8.0 Cooperative Forecast and Greater Washington 2050 – Update to the Regional Activity Centers and Clusters



Cooperative Forecasting and Data Subcommittee
November 9, 2010

National Capital Region Transportation Planning Board Vision (1998)

“In the 21st Century, the Washington metropolitan region remains a vibrant world capital, with a transportation system that provides efficient movement of people and goods. This system promotes the region's economy and environmental quality, and operates in an attractive and safe setting--it is a system that serves everyone. The system is fiscally sustainable, promotes areas of concentrated growth, manages both demand and capacity, employs the best technology, and joins rail, roadway, bus, air, water, pedestrian and bicycle facilities into a fully interconnected network.”

...(2) Better coordination of transportation and land use planning, including the creation of a composite regional map that identifies and integrates a system of regional transportation corridors and facilities, the regional core, regional activity centers, and "green space," and which will serve as the basis for future transportation planning and funding priorities

TPB Vision Action Agenda, Goal 2



Existing Regional Activity Center Typologies and Criteria

DC Core – Primary focal point of Metropolitan Washington. Comprises major centers within the District of Columbia. Contains the major governmental, cultural and tourism activities of the region, as well as significant business and commercial activity. Center of the region’s transit system. Pedestrian oriented sidewalk network with an organized street grid/block configuration.

Mixed Use Centers – Generally urban in character, areas **up to two square miles** (1,280 acres) that contain either a dense mix of retail, employment, and residential activity or significant levels of employment and housing. Accessible by transit or commuter rail and by major highways. ***Employment Criteria: Greater than 15,000 jobs and greater than 25 jobs per acre in 2025. Residential Criteria: Greater than 10 units per acre.***

Employment Centers – Higher-density areas **up to 3.5 square miles** (2,240 acres) that contain significant concentrations of employment. Generally urban or becoming more urban in character. ***Employment Criteria: Greater than 20,000 jobs and greater than 30 jobs per acre in 2025.***

Suburban Employment Centers – More-dispersed, lower-density areas, **less than 6 square miles** (3,840 acres). ***Employment Criteria: Greater than 15,000 jobs and greater than 10 jobs per acre in 2025.***

Emerging Employment Centers – Rapidly developing “campus-style” suburban employment areas **less than 6 square miles** (3,840 acres) in total area. ***Employment Criteria: Greater than 15,000 jobs in 2025, and greater than 50 percent job growth between 2000 and 2025 OR less than 50 percent commercial buildout in 2025.***



Considerations from Region Forward Targets:

Definition or Implementation Around Regional Activity Centers (RAC)

- By 2020 Housing + Transportation Cost in RACs will not exceed 45% of AMI
- All RACs will have transit access
- Beginning in 2012 at least 80% of new or preserved affordable housing units will be in RACs
- Transportation investments will link RACs
- Beginning in 2010, capture 75% of the sq. ft. of new commercial construction and 50% of new households in RACs

Other Targets and Goals?

First Step:

- **Align Regional Activity Centers boundaries with new COG 3722 TAZ System boundaries**
- **Evaluate current Regional Activity Centers criteria with Round 8.0 Cooperative Forecast**

Second Step:

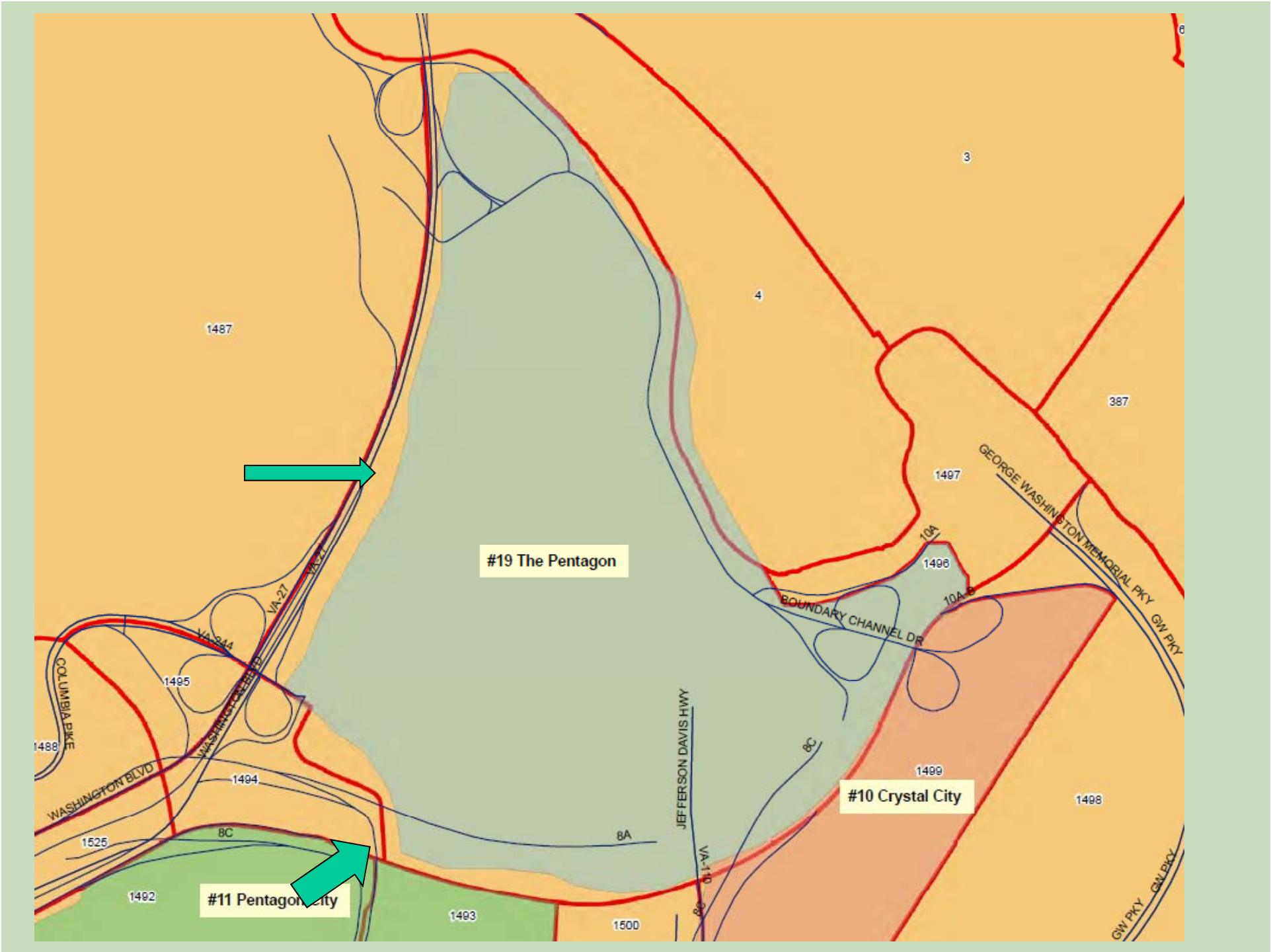
- **Region Forward Baseline Analysis**
Timeframe: November 2010 – April 2011

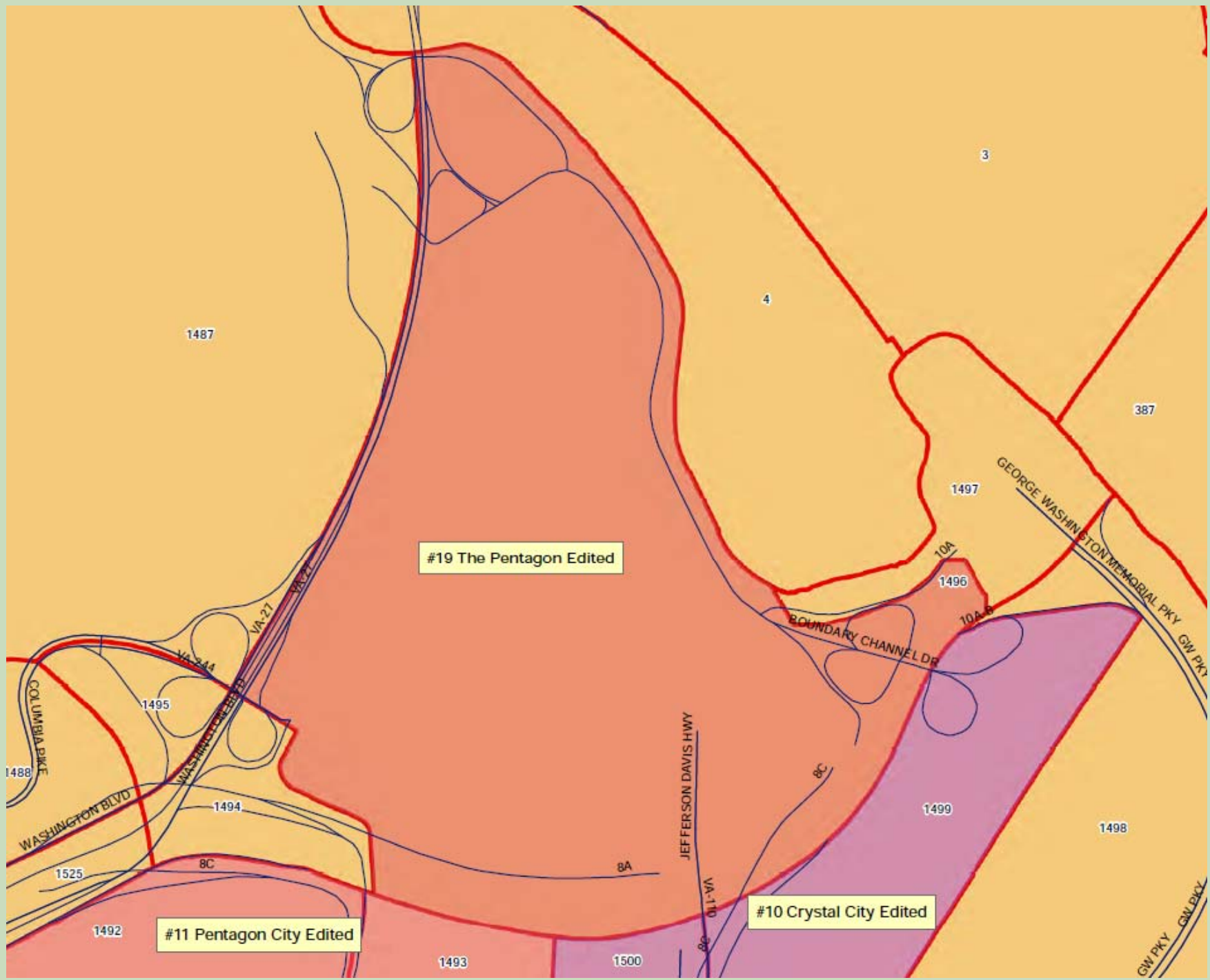
Third Step:

- **Review goals, targets, and indicators of Region Forward to determine of how we define a “Complete Community” and the relationship to current Regional Activity Centers (Re-evaluate and Redefine)**
Timeframe: April 2011 - To be determined

Examples of Possible Boundary Adjustments (COG Staff Edits) to Regional Activity Centers:

- Arlington County - #19 The Pentagon
- Fairfax County – #29 Beltway South
- District of Columbia – #5 New York Avenue
- Frederick County - #51 Airport/Monocacy Blvd.
- Montgomery County – #43 Shady Grove/King Farm/Life Sciences Center
- City of Fairfax/Fairfax County - #36 City of Fairfax/GMU





#19 The Pentagon Edited

#11 Pentagon City Edited

#10 Crystal City Edited

WASHINGTON BLVD

JEFFERSON DAVIS HWY

BOUNDARY CHANNEL DR

GEORGE WASHINGTON MEMORIAL PKY

GW PKY

1487

3

4

387

1497

10A

1496

10A.5

1495

1494

1499

1498

1492

1493

1500

1525

8C

8A

8C

VA-110

COLUMBIA PIKE

1488

VA-244

VA-27

VA-77

GW PKY

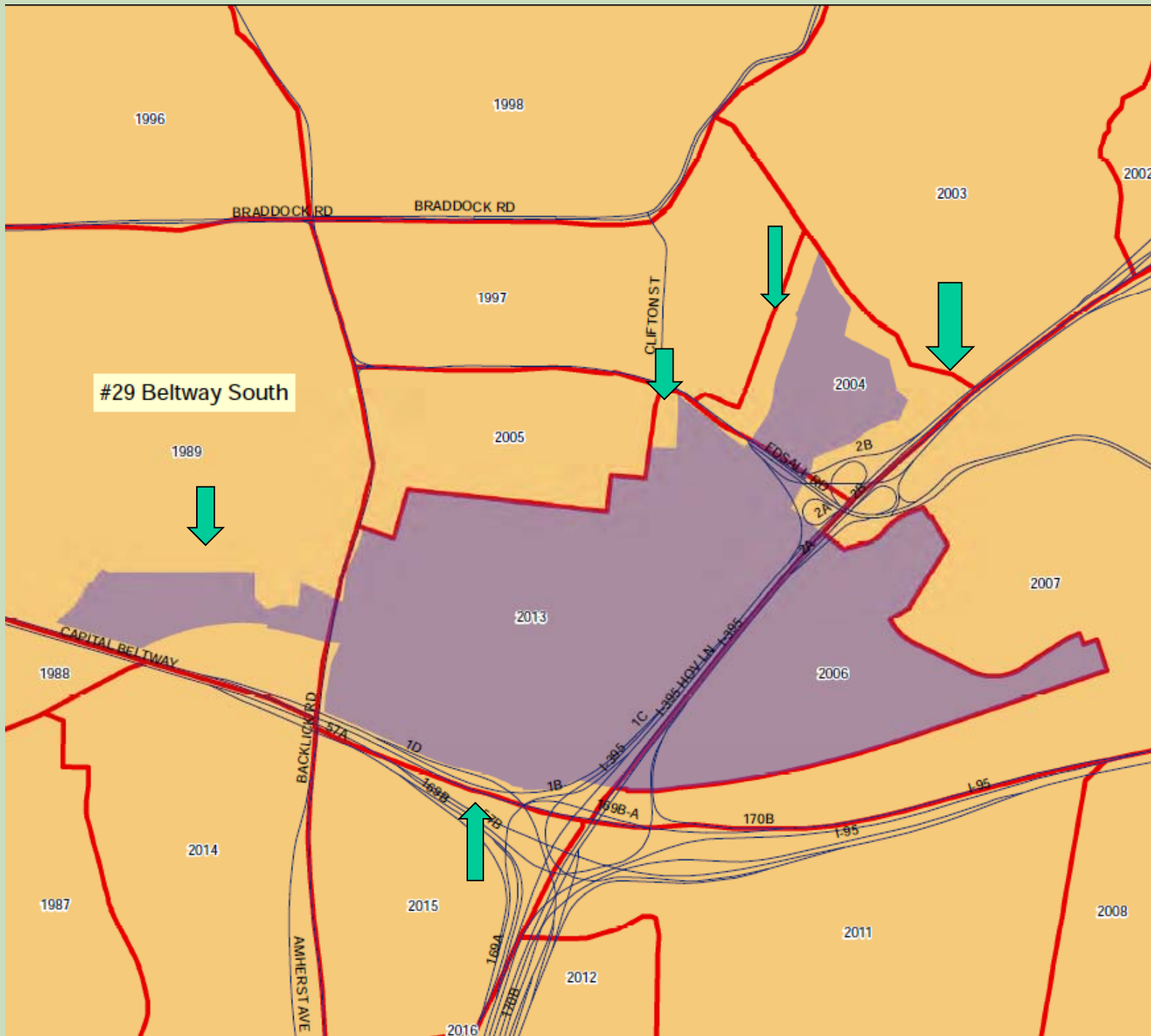


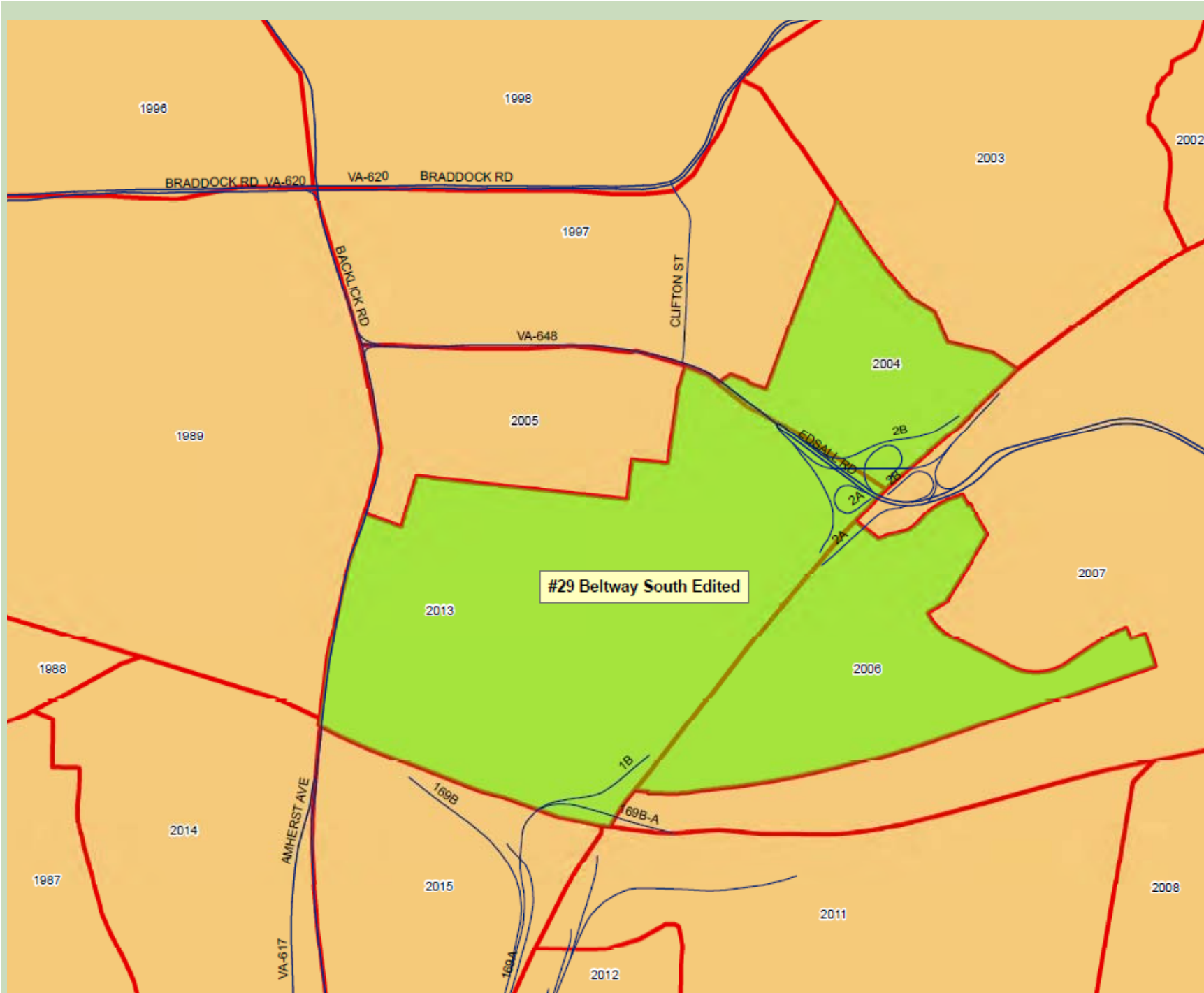
#19 The Pentagon Edited

#11 Pentagon City Edited

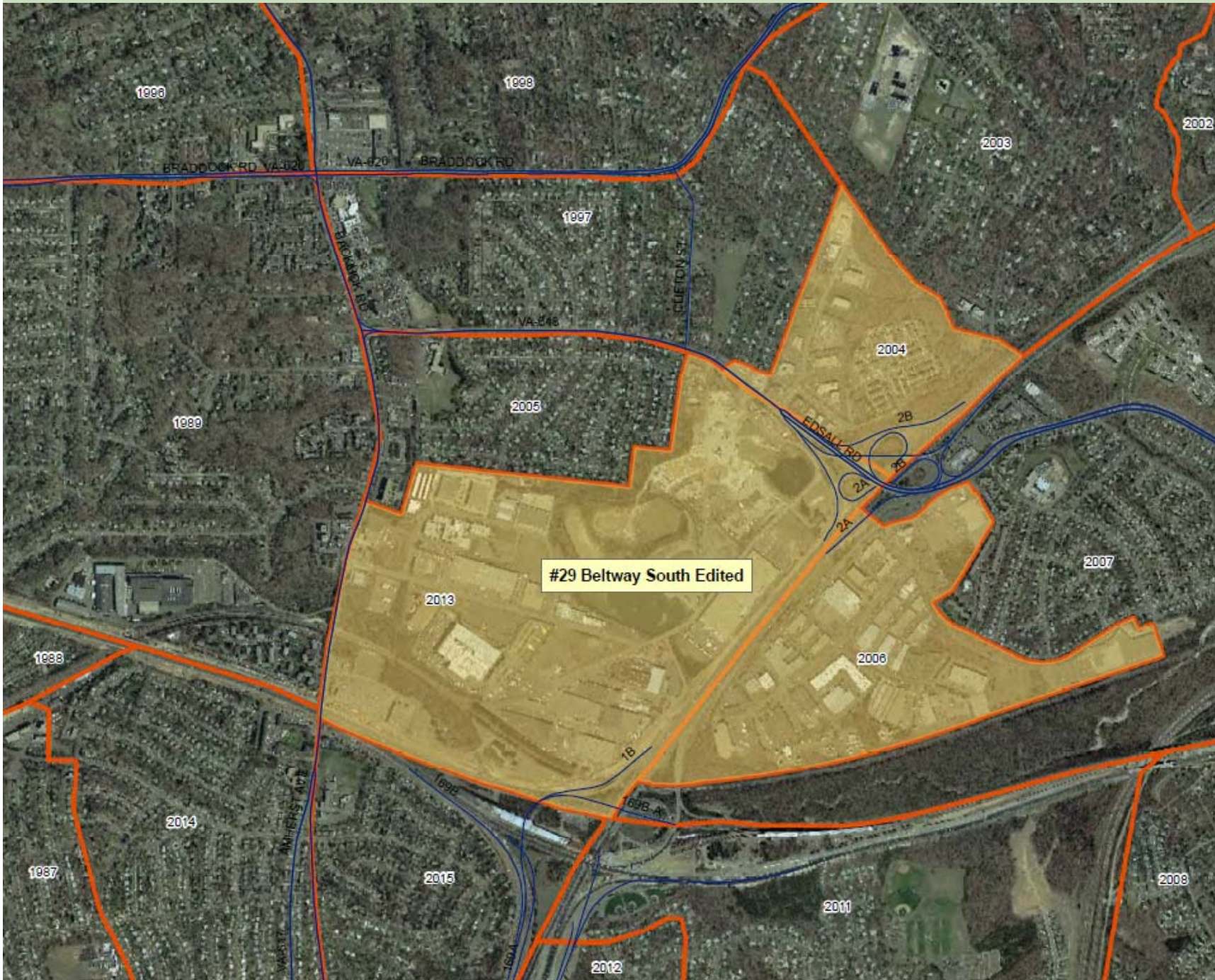
#10 Crystal City Edited

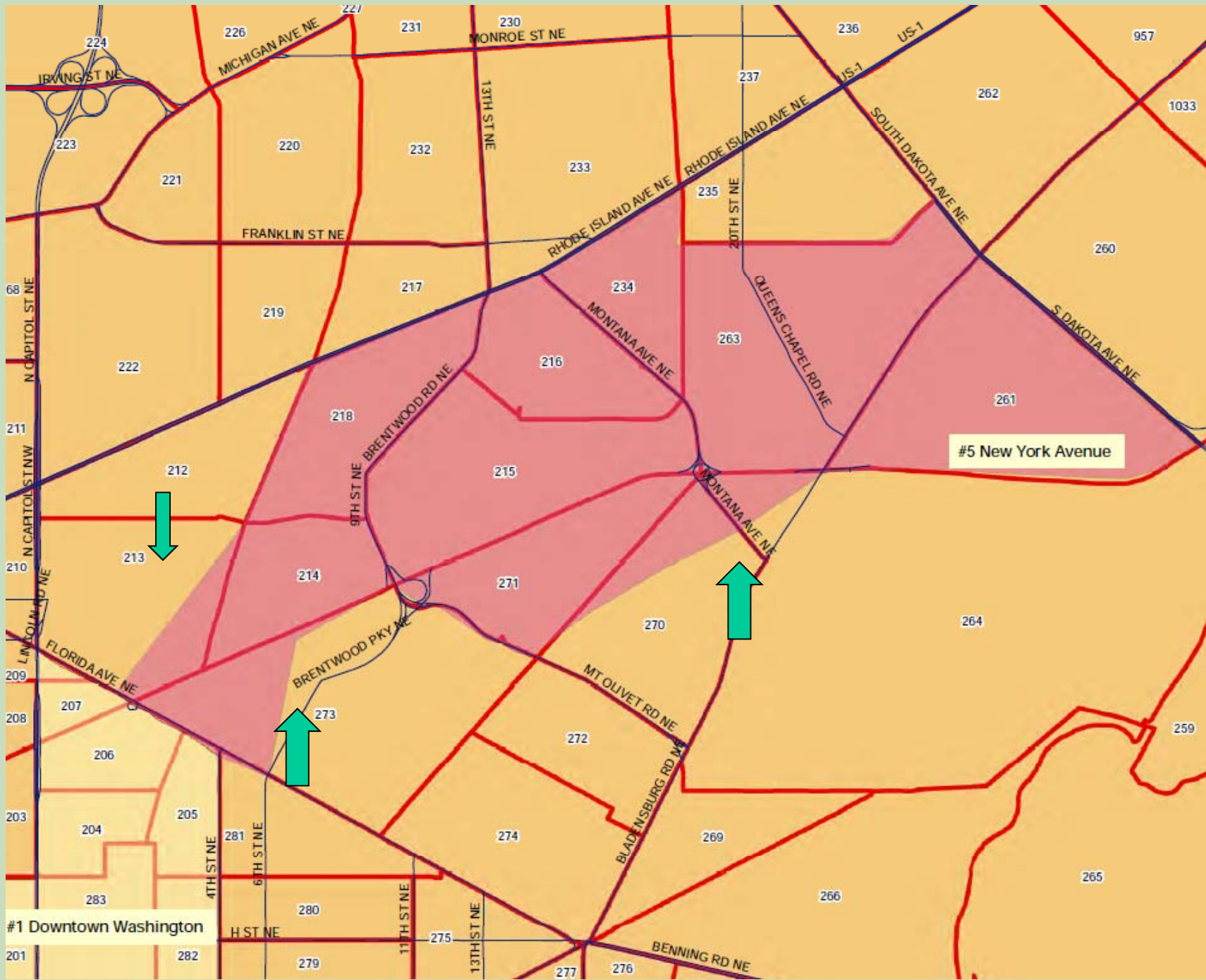


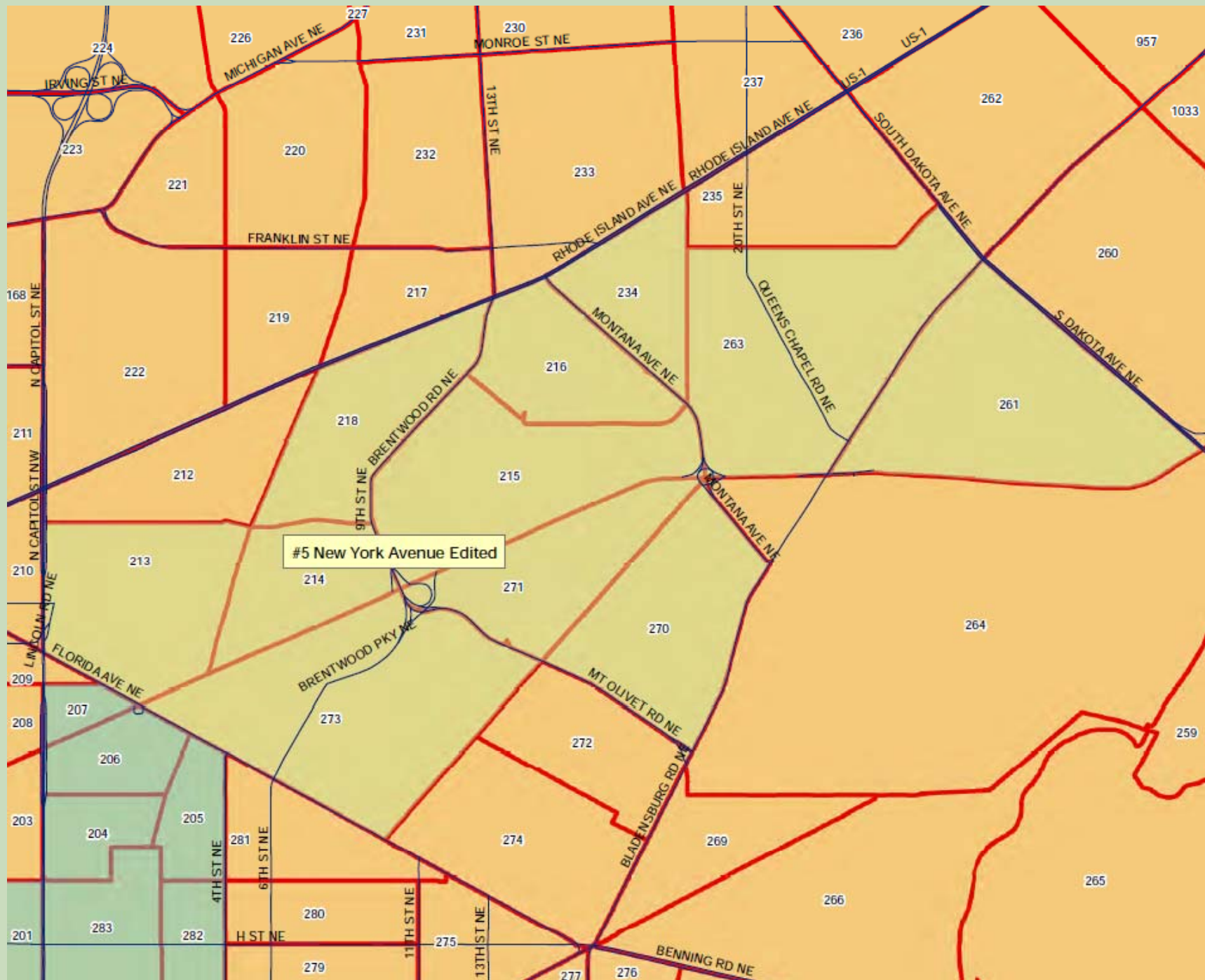


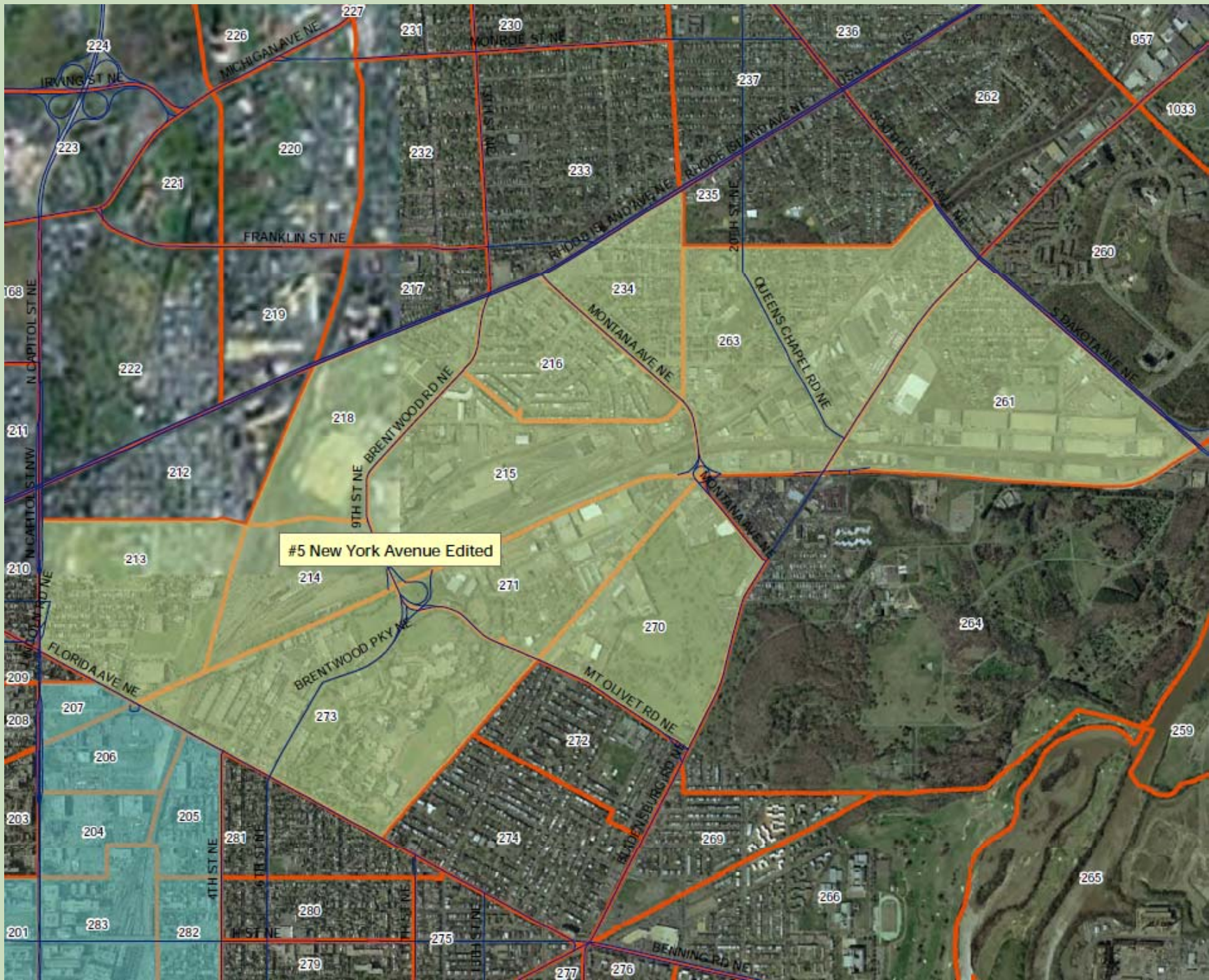


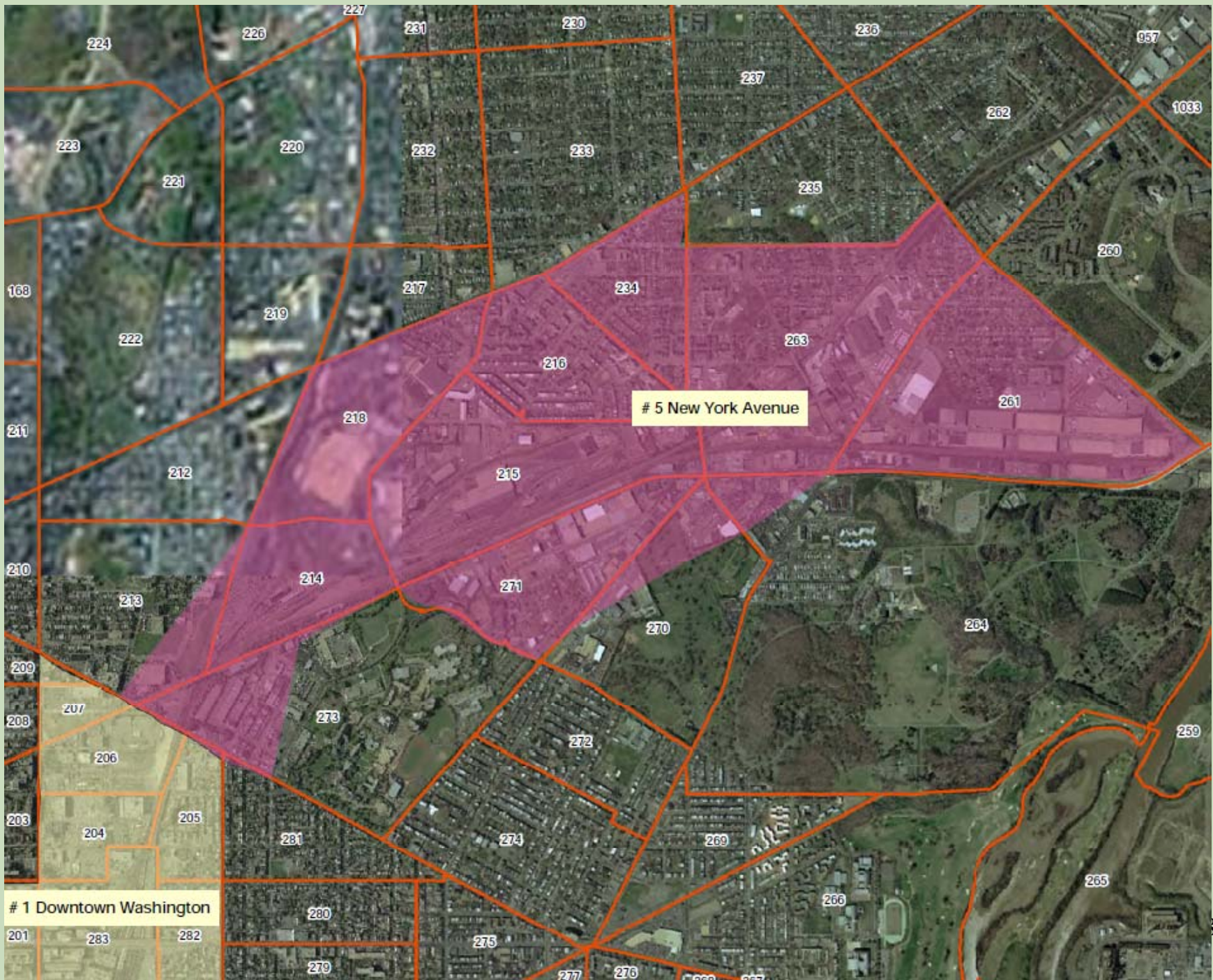






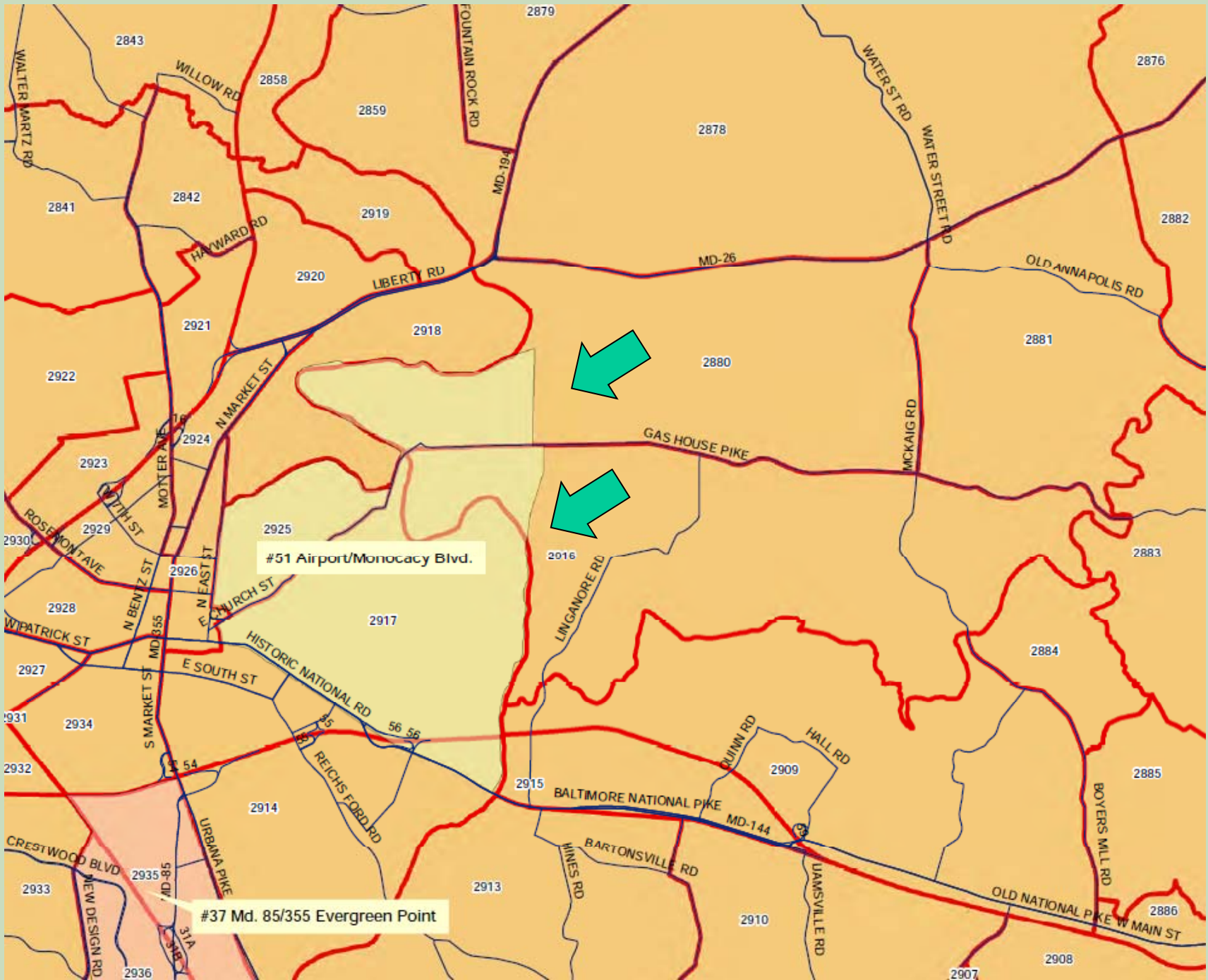






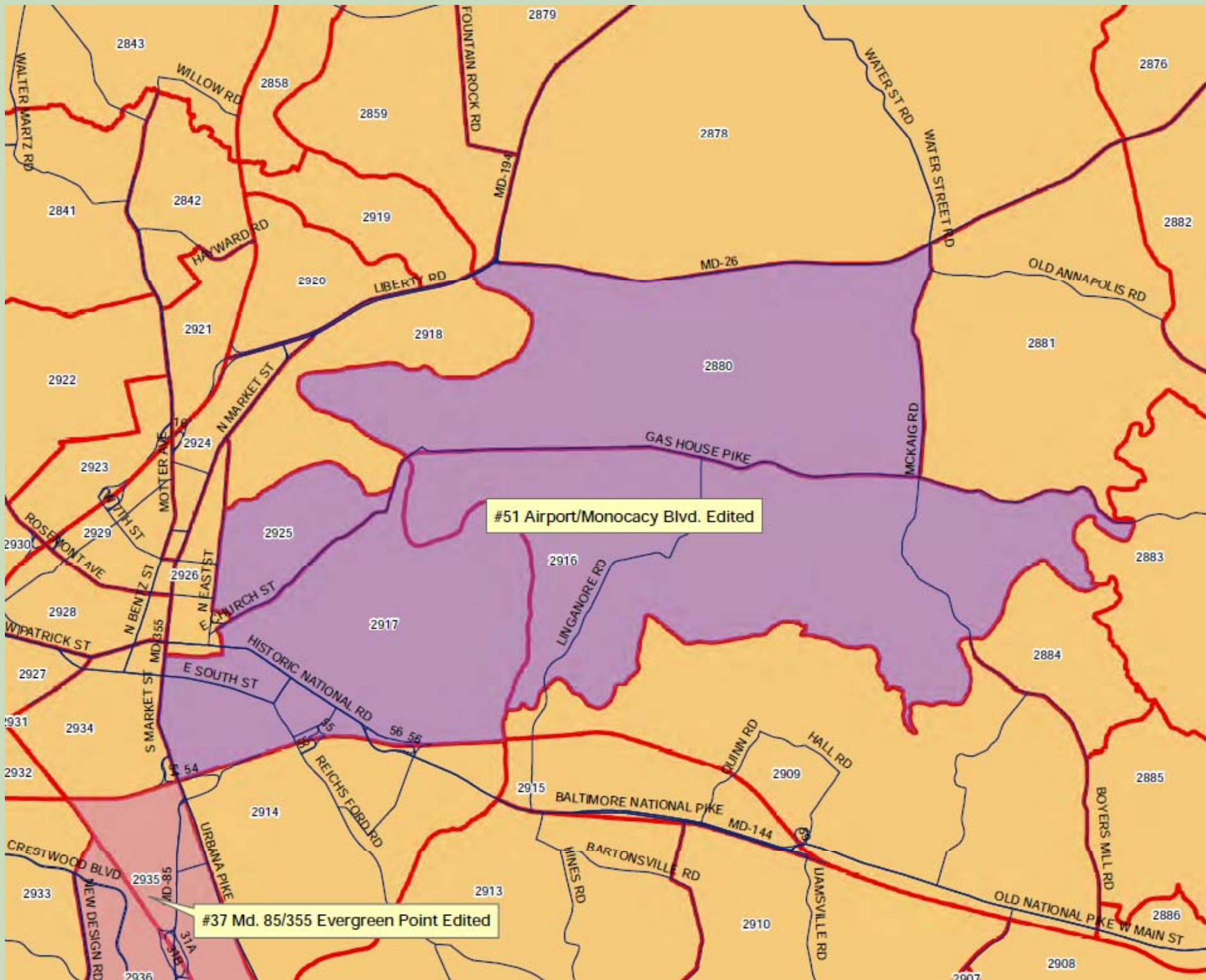
5 New York Avenue

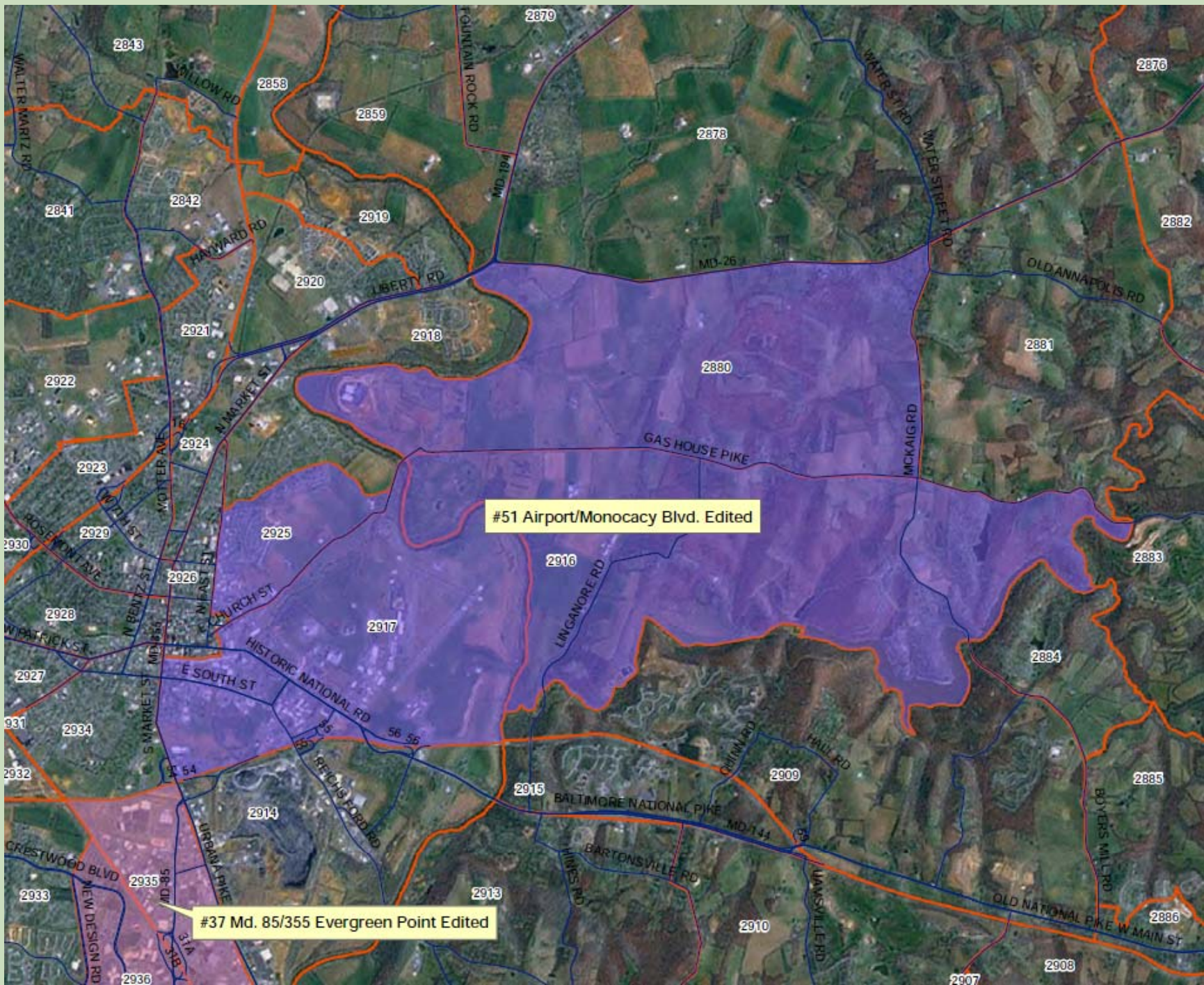
1 Downtown Washington



#51 Airport/Monocacy Blvd.

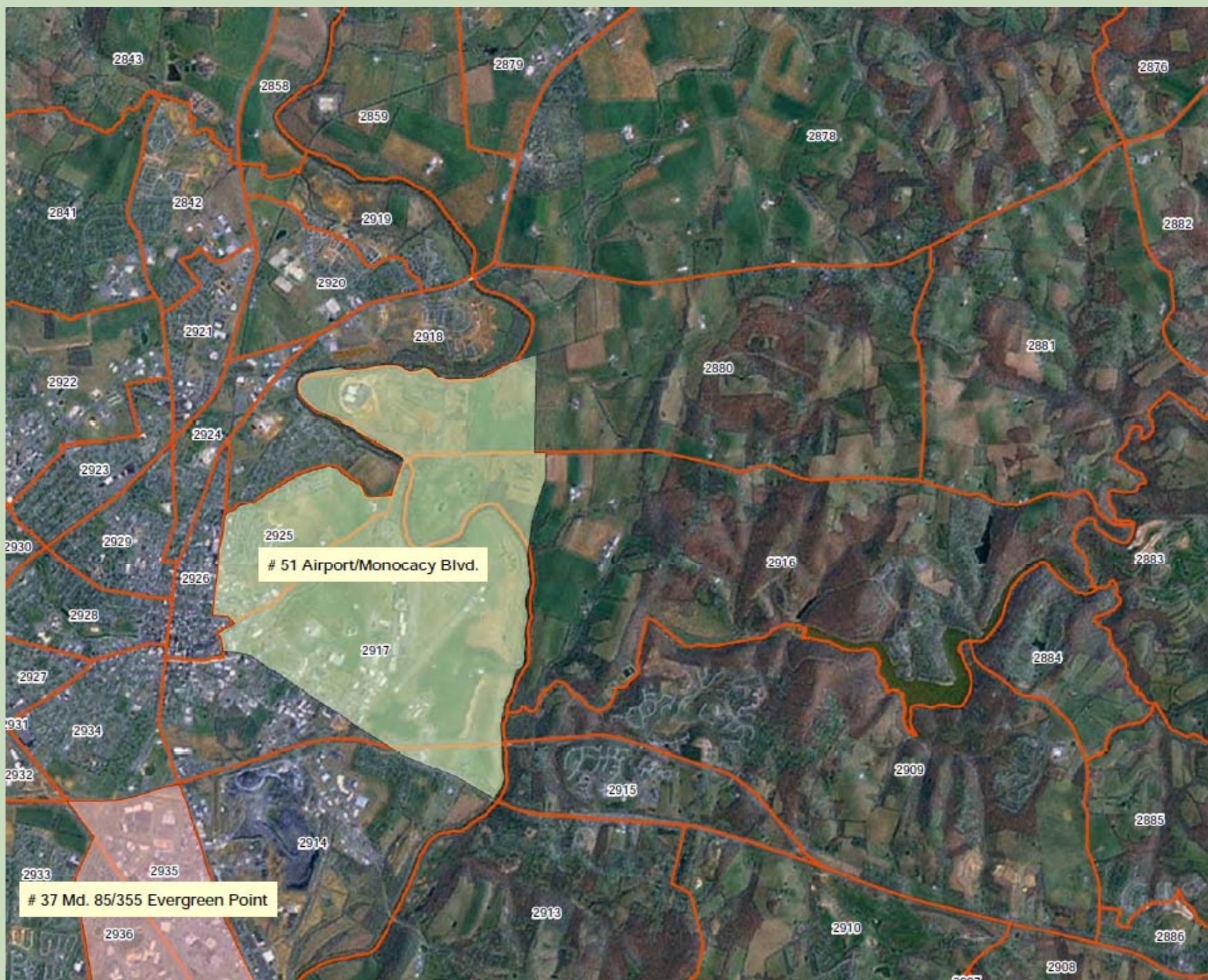
#37 Md. 85/355 Evergreen Point

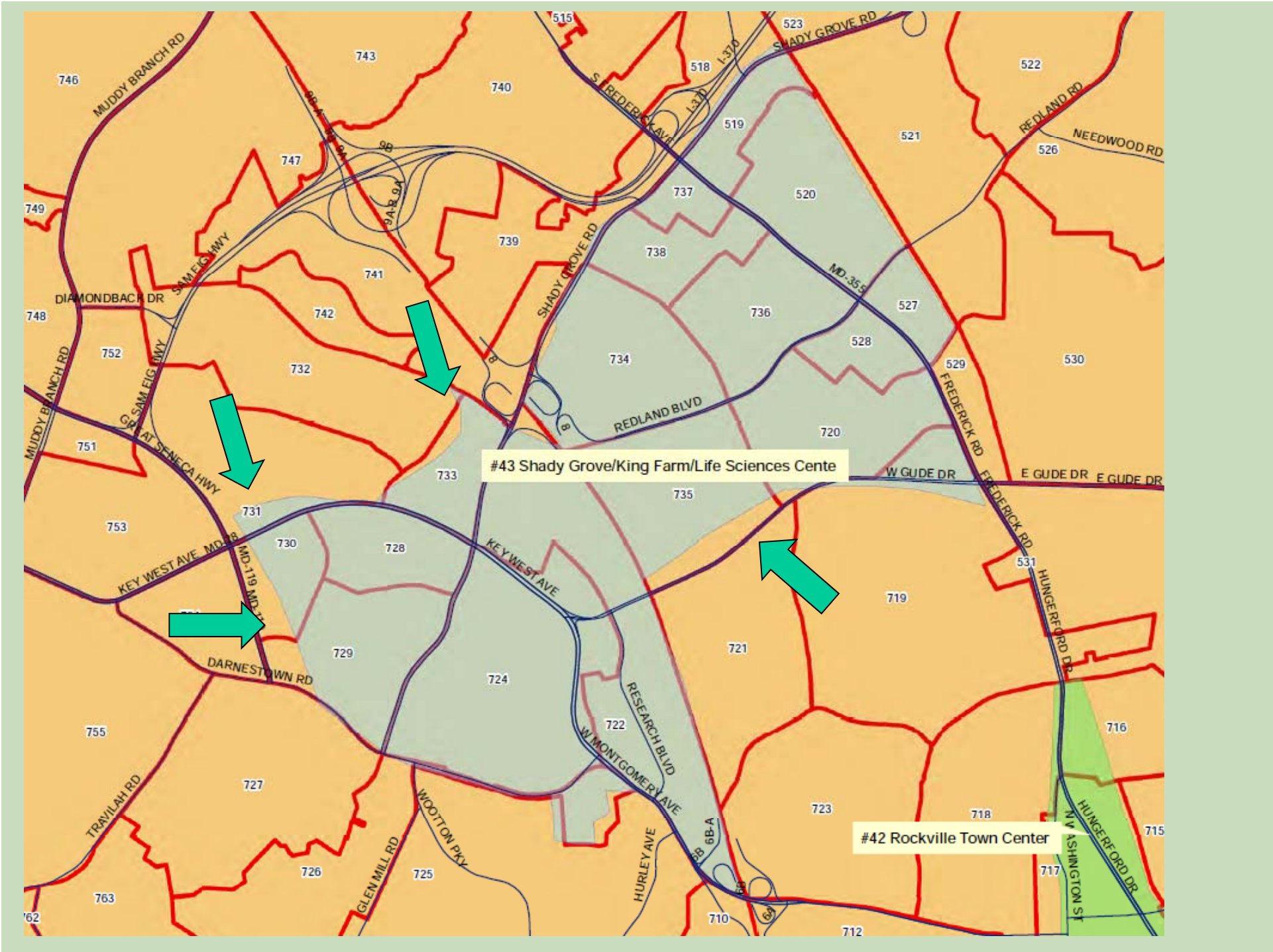




#51 Airport/Monocacy Blvd. Edited

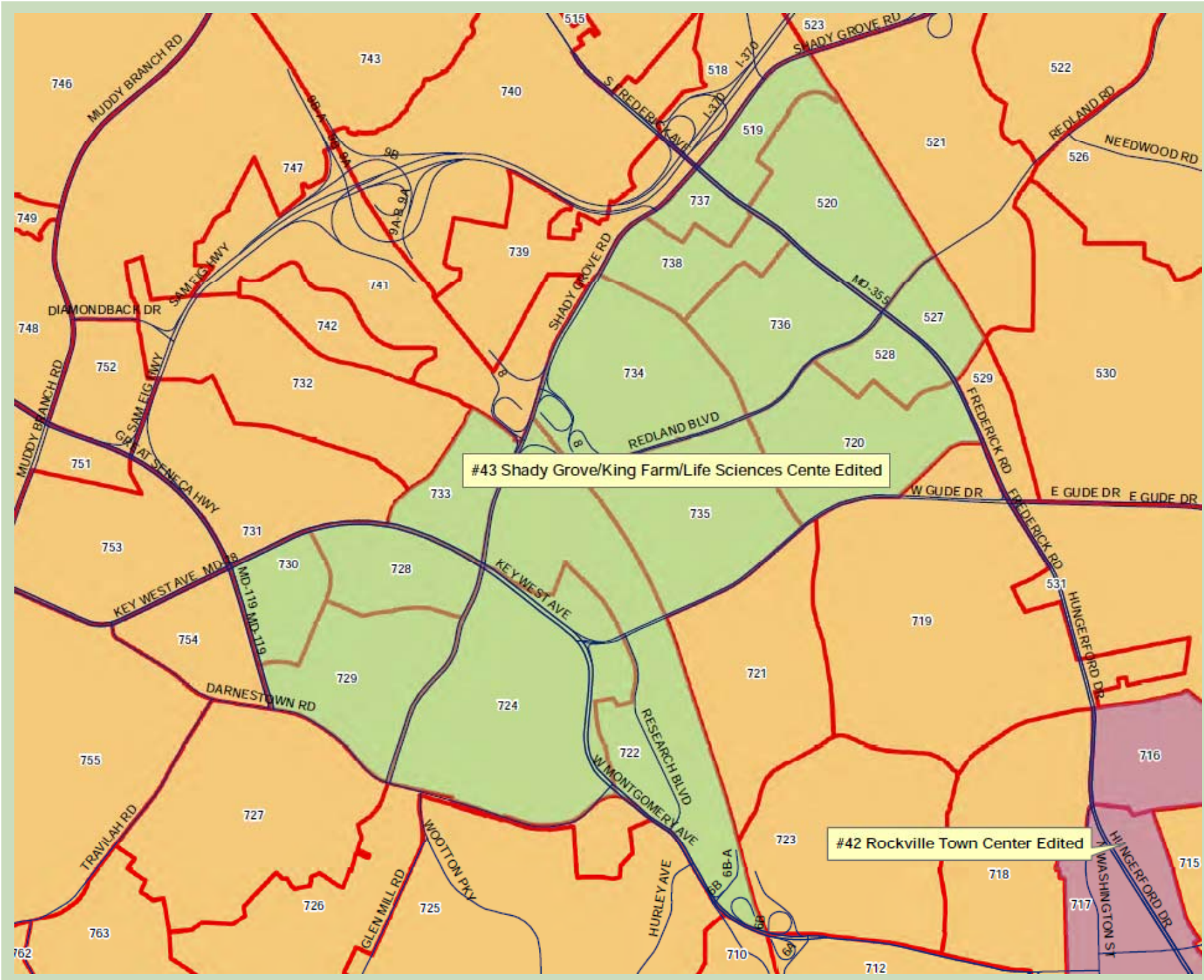
#37 Md. 85/355 Evergreen Point Edited





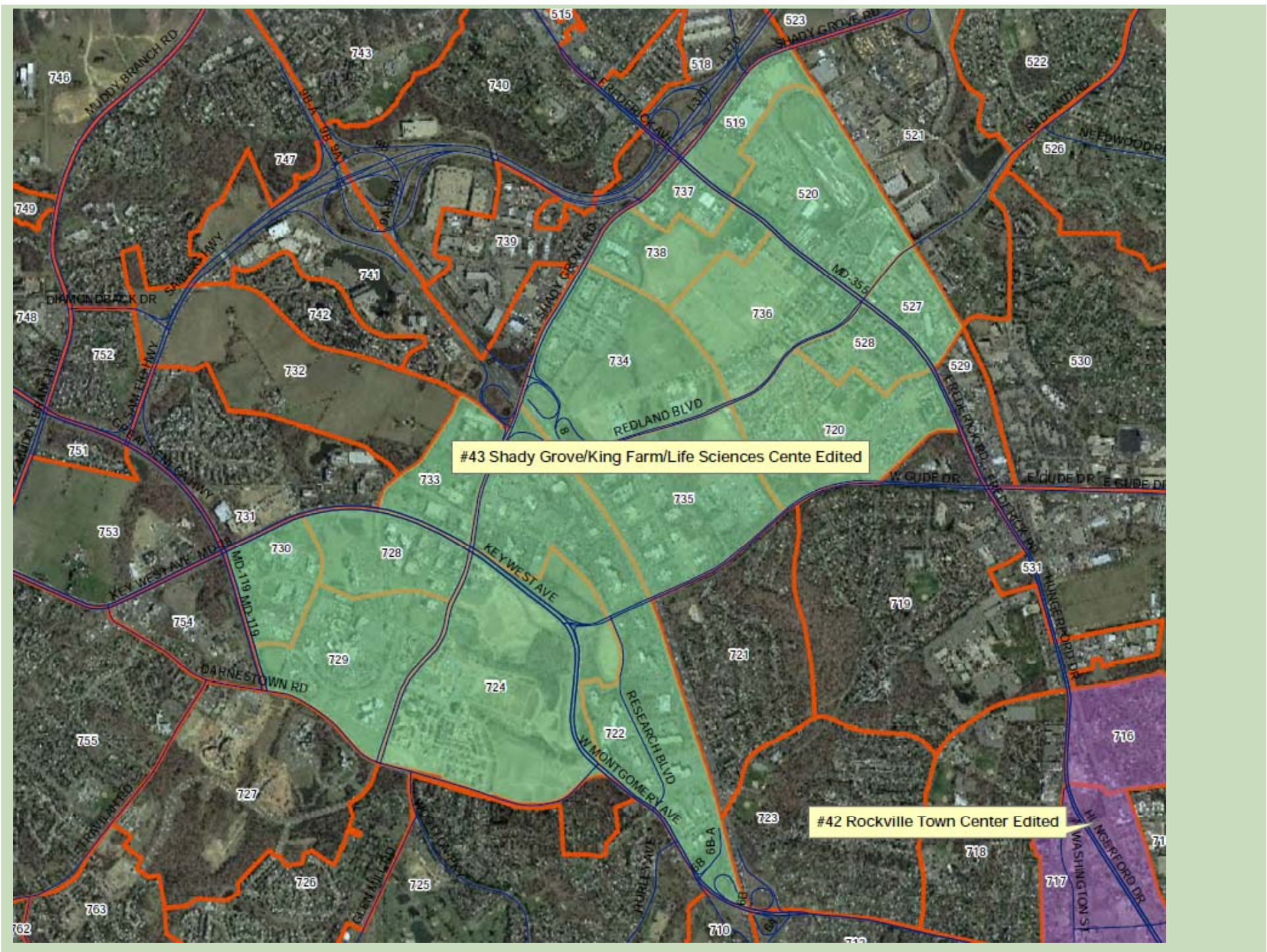
#43 Shady Grove/King Farm/Life Sciences Center

#42 Rockville Town Center



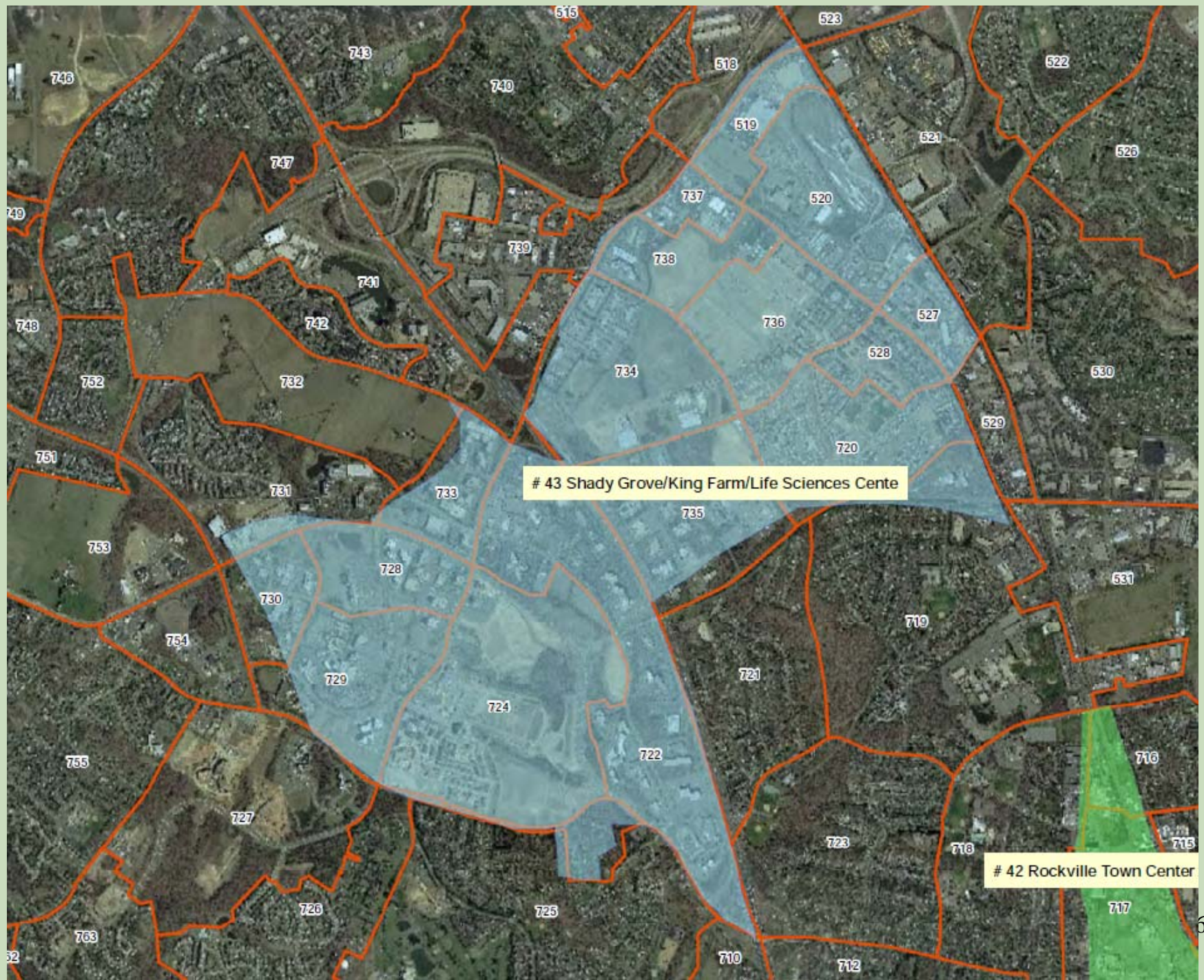
#43 Shady Grove/King Farm/Life Sciences Cente Edited

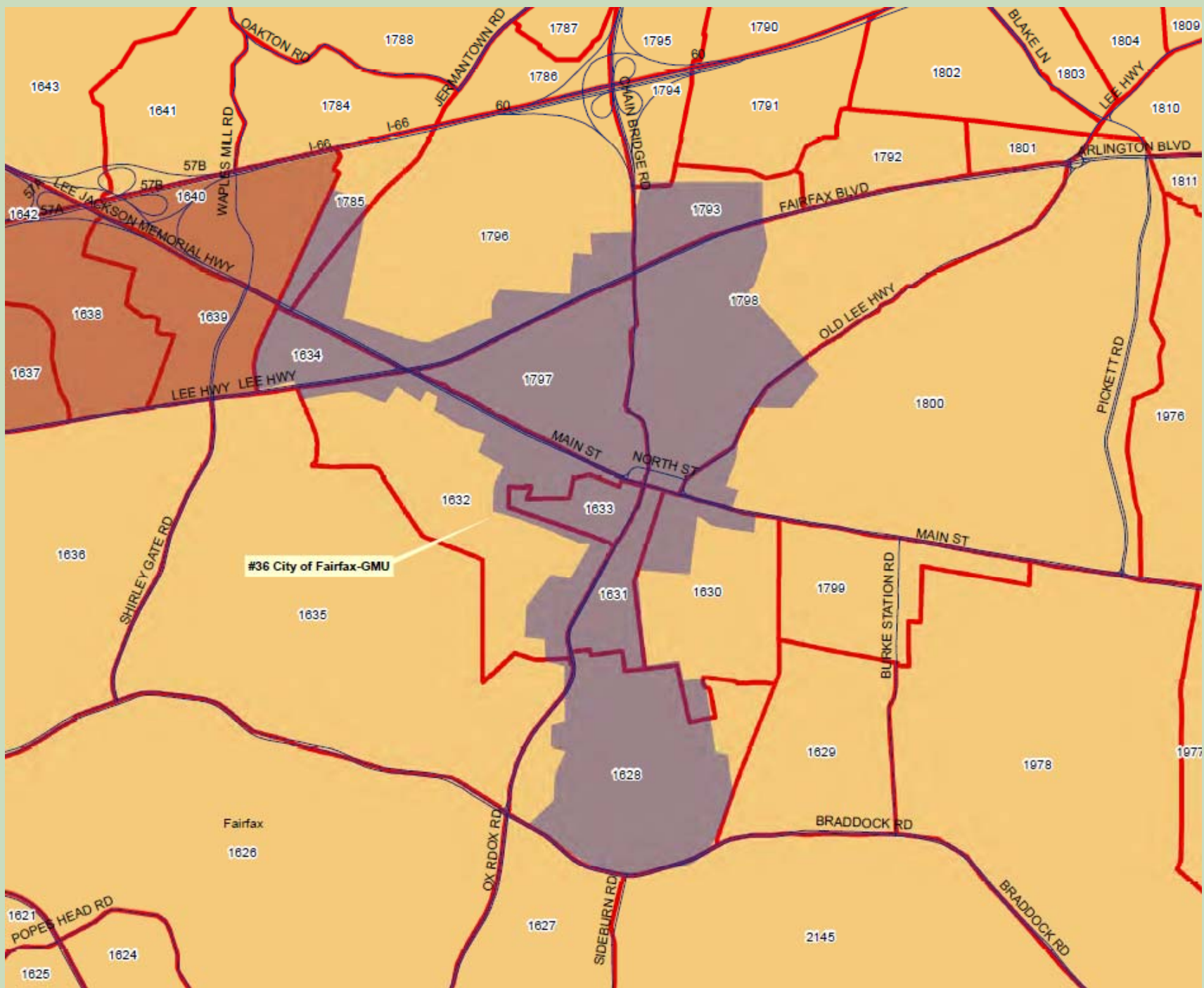
#42 Rockville Town Center Edited

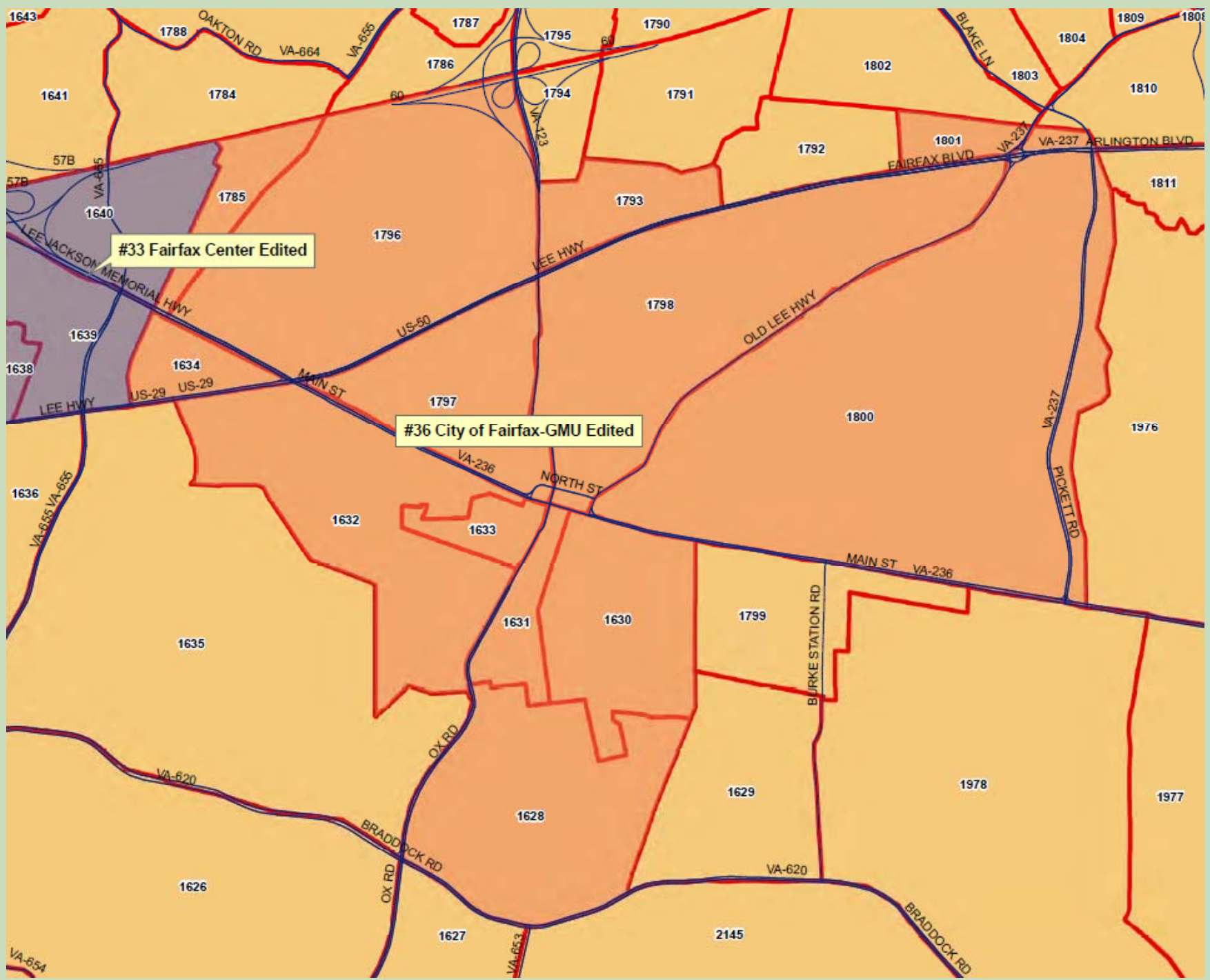


#43 Shady Grove/King Farm/Life Sciences Cente Edited

#42 Rockville Town Center Edited







#33 Fairfax Center Edited

#36 City of Fairfax-GMU Edited

