

# **CRITICAL INFRASTRUCTURE AND WATER SUPPLY IN THE NCR**

---

**November 18, 2022**

**Mark Scott, DC HSEMA**

# Critical infrastructure in the NCR

---

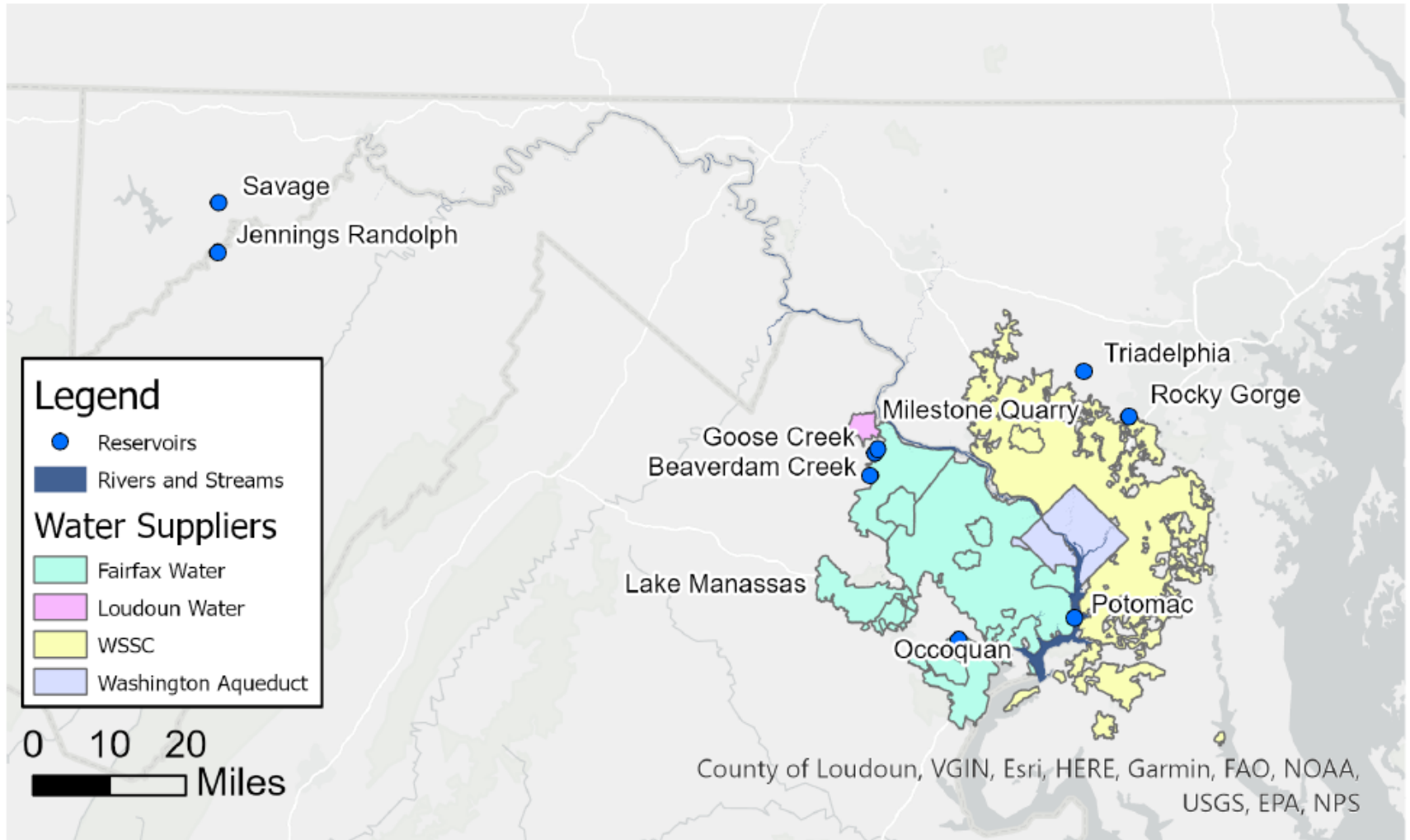
- HSEMA has an established program to address critical infrastructure in the District of Columbia
  - Aligns with federal homeland security and emergency preparedness doctrine
  - Focuses on both protection and resilience
  - Includes emphasis on critical supply chains
- MWCOCG supports regional collaboration on infrastructure
  - NCR Critical Infrastructure Protection Working Group includes jurisdictions and partners from across the NCR
  - Serves as a forum for addressing infrastructure issues with regional impact

# Preparing for water supply disruptions

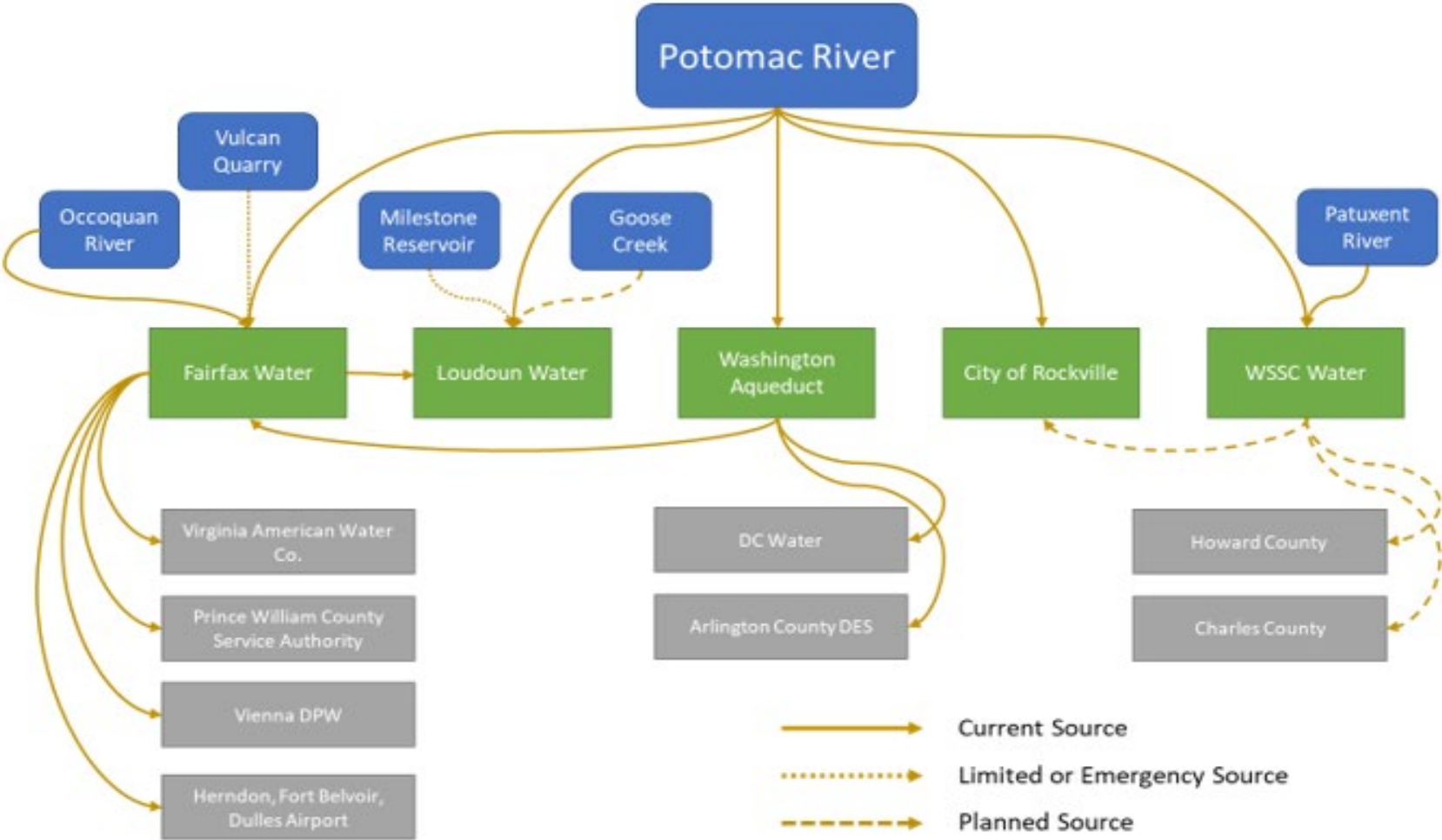
---

- HSEMA in partnership with MWCOCG has been addressing food and water supply impacts from a catastrophic event
  - FEMA grant-funded
  - Includes all NCR jurisdictions
  - Not related to a specific threat or hazard
- This work is intended to strengthen the region's capability to prepare for, respond to, and recovery from supply disruptions
  - Builds on existing planning efforts in the region
  - Based on understanding existing supply chains
  - Provides a preparedness framework for NCR jurisdictions

# Water supply chain in the NCR

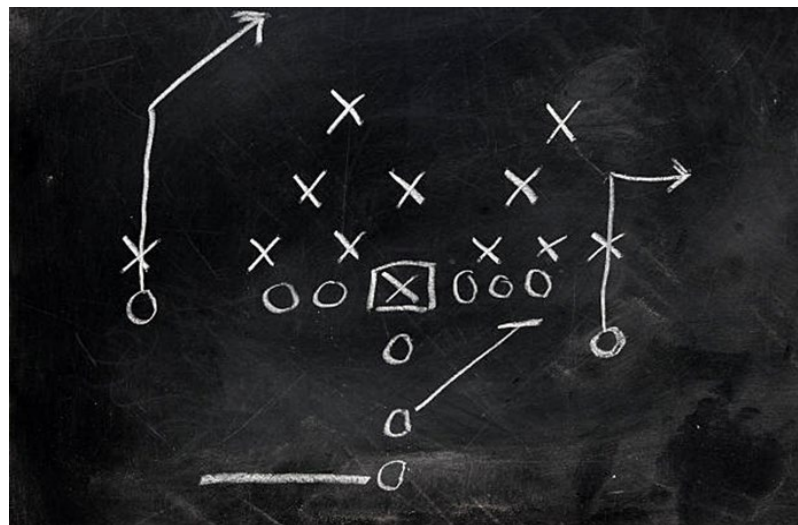


# Relationships between suppliers and wholesale customers (ICPRB 2020)



# A strategic framework for managing water supply disruptions

- Our project identified gaps across the region in addressing food and water supply disruptions
- This framework identifies opportunities to improve regional preparedness for these disruptions
- Each jurisdiction can adapt the framework to strengthen capabilities based on its unique circumstances and needs



# Framework goals and objectives

| <b>Preparedness</b>  | <b>Response</b>  | <b>Recovery</b>  |
|--|--|--|
| Establish relationships with key stakeholders  | Implement coordination structure to support response efforts | Restore food and water services  |
| Understand and facilitate key information flows  | Assess food and water impacts                                | Ensure access  |
| Improve supply chain resilience and responsiveness   | Coordinate the relief supply chain                           | Plan for redevelopment of impacted food and water infrastructure systems |
| Enhance education and training among government, private sector partners, NGOs, and the public | Distribute food and water to impacted population             |  |
|  | Provide timely, accurate public information                  |  |



# Path forward

---

- Socialize this framework with all water utilities in the NCR
- Work with all NCR jurisdictions to identify ways to integrate the framework with their existing plans and procedures
- Monitor the effectiveness of the framework during actual events, and adjust as needed