

COG WINTER WEATHER MEETING



ASSETS

- 28 Maintenance Shops in 7 Districts
- 17,417 Lane Miles
- 5,212 Centerline Miles
- 37.1 Billion Annual Vehicle Miles of Travel
- Annual Average Daily Traffic
 - 50,000+: 3,048 Lane Miles (17%)
 - 10,000-49,999: 7,484 Lane Miles (43%)
 - <9,999: 6,885 Lane Miles (40%)

RESOURCES

- ~1,100 Maintenance Shop Employees
 - ~760 Field Employees (173 hired in the past year)
 - ~110 Managers
 - ~190 Administrative Staff and Mechanics
 - ~40 Winter Volunteers
- ~600 MDOT SHA Dump Trucks
- ~2,500 Hired Equipment Contractors
- \$80 Million Winter Budget

SNOW FIGHTING MATERIALS

Rock Salt

- 87 salt storage facilities across the state
- ~390,000 tons of salt available
- Used as a deicer during active frozen precipitation
- Most used chemical for snow fighting
- Effective on pavement temperatures of 20° F

Salt Brine

- 15 brine making facilities across the state
- 77 storage sites across the state
- ~1.7 million gallons of salt brine storage
- Used for anti-icing prior to winter events
- Used as a deicer during active winter precipitation and on hard pack
- Effective on pavement temperatures of -6° F

Liquid Magnesium Chloride

- 16 sites across the state
- ~100,000 gallons
- Effective on pavement temperatures of -26° F



TOP ACCOMPLISHMENTS

- Continuing Salt Reduction Education
 - 50% reduction in salt usage from 11 years ago
 - Savings of ~\$95 million
- Average 2.1 Hours to Bare Pavement the past 5 Winter Seasons

SNOW FIGHTING EQUIPMENT

SALT BRINE APPLICATOR TRUCK



- 23 units across the state
- 1,800 to 2,600 gallons of brine application capacity

DUMP TRUCK WITH BUTTERFLY AND WING PLOW



- 310 units across the state
- 14 feet of clearing width for interstates and wide roadway sections

DUMP TRUCK WITH DUAL WING PLOW



- 4 units in Garrett, Allegany, Frederick, and Montgomery Counties
- 18 feet of clearing width for interstates and wide roadway sections

TOW PLOW



- 2 units in Western Maryland
- 22 feet of clearing width for interstates

OSH KOSH



- 7 units in Frederick, Washington, Allegany, and Garrett Counties available for deployment statewide
- Allows us to operate in extreme conditions due to four-wheel drive



SNOW BLOWER



- 2 units in Garrett County available for deployment statewide
- 3,500 tons of snow removal capacity per hour



LOADER-MOUNTED BLOWER



- 4 units in Montgomery, Frederick, Allegany, and Garrett Counties available for deployment statewide
- 2,000 tons of snow removal capacity per hour

GREEN LIGHTS

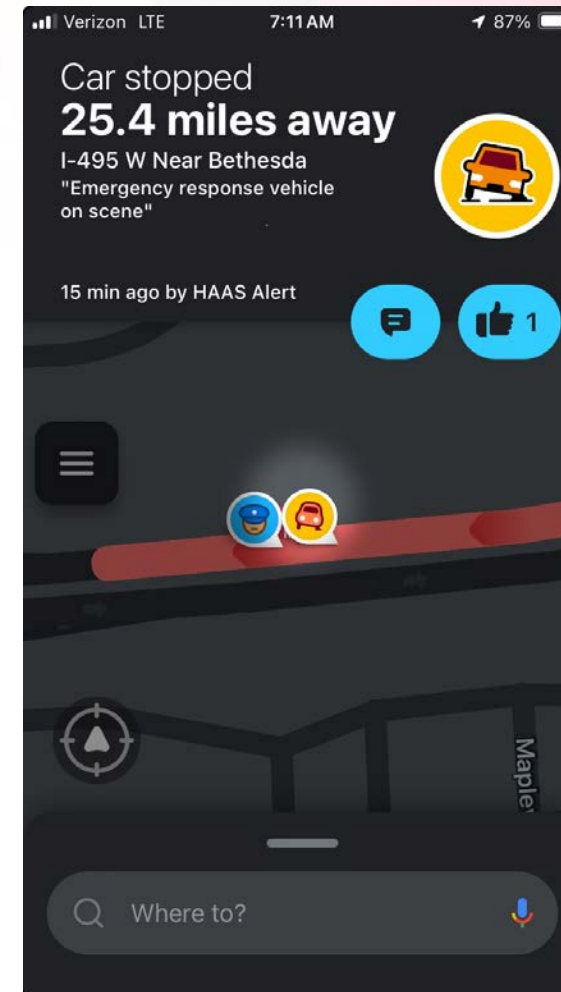


- House Bill 1150 passed October 2022 allowing the use of green lights on snow fighting equipment



HAAS ALERTS

- ~50 units
 - CHART vehicles
 - Team Leader trucks
 - Protection vehicles
- Vehicle onsite
 - Work zone
 - Accident
 - Disabled vehicle





AVL

Winter

- Materials spread
- Route completion
 - Route decay
- MARWIS integration?
- Loader scale data?

Fleet Management

- “Check Engine Light”
- Fueling reports
- Usage reports
- Vehicle idling
- Accident reconstruction
- Pre/post-trip inspection?
- Vehicle emissions compliance?

CHART ON THE WEB

<https://traffic.maryland.gov>

← → ↻ 🏠 <https://chart.maryland.gov/> 🔍 ☆ 📱 D Update ⋮

📁 Work 📁 Home 📁 Football

 Maryland.gov

📞 State Directory 🏢 State Agencies 🌐 Translate

Search 🔍

Home

Traveler Information ▾

Severe Weather Information ▾

Data Feeds



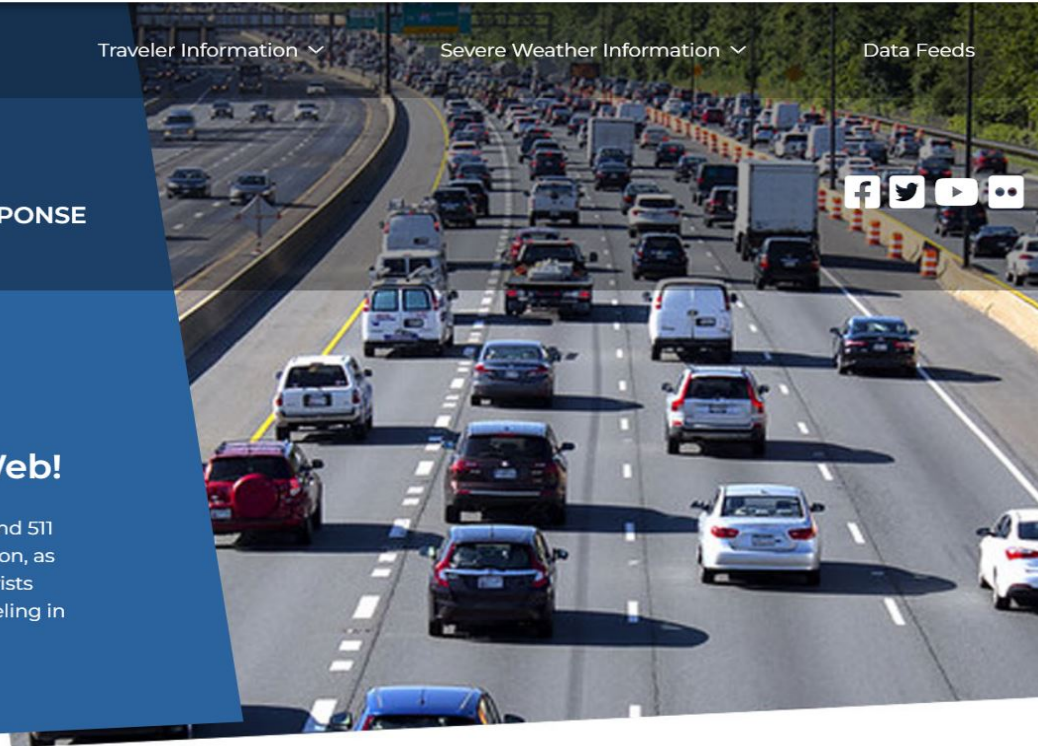
MARYLAND DEPARTMENT OF
TRANSPORTATION
COORDINATED HIGHWAYS ACTION RESPONSE
TEAM



Welcome to Maryland 511 and CHARTWeb!

CHART Web is Maryland's official 511 Traveler Information service. Maryland 511 provides travelers with reliable, current traffic and road closure information, as well as weather related traffic events and conditions. MD 511 helps motorists reach their destination in the most safe and efficient manner when traveling in Maryland.

LEARN MORE



ONLINE TRAVELER INFORMATION FOR 25 YEARS

Baltimore County: I-695 INNER LOOP PRIOR TO EXIT 43 MD 157 PENINSULA EXPWY (SB) MM 44.1-46.0					
Type	Incident (Emergency Roadwork)				
Location	Baltimore County [I-695 INNER LOOP PRIOR TO EXIT 43 MD 157 PENINSULA EXPWY (SB) MM 44.1-46.0]				
Direction	Inner Loop				
Details	1 of 1 Inner Loop Shoulders Closed 1 of 2 Inner Loop Traffic Lanes Closed All Outer Loop Lanes Open Created: 05/17/2020 10:08 PM by ACC Central				
Lane Configuration Data	<table border="1"><tr><td>Inner Loop</td><td>Outer Loop</td></tr><tr><td></td><td></td></tr></table>	Inner Loop	Outer Loop		
Inner Loop	Outer Loop				

Traffic Incidents and Events

View reported traffic incidents, weather road closures, active construction and maintenance closures information

SEE MORE



Live Cameras

View the live traffic cameras from different locations around the state of Maryland

SEE MORE



Interactive Mapping

View live Maryland roadway conditions through our Interactive GIS Mapping Application.

SEE MORE



Local Weather Stations

View current weather data from CHART System Weather Stations

SEE MORE



Speed Sensor Data

View current traffic speeds from CHART system Speed Sensors.

SEE MORE

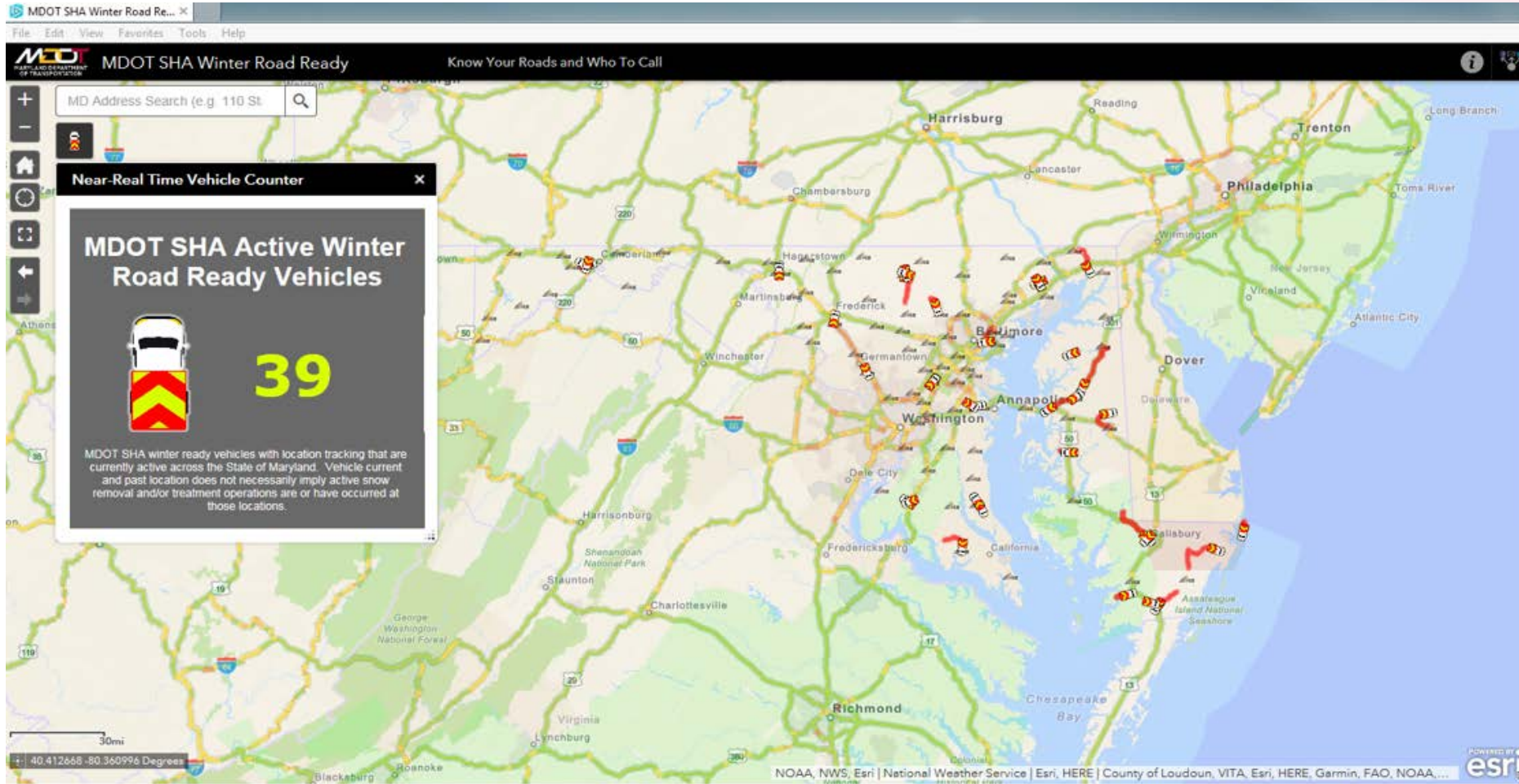


Highway Message Signs

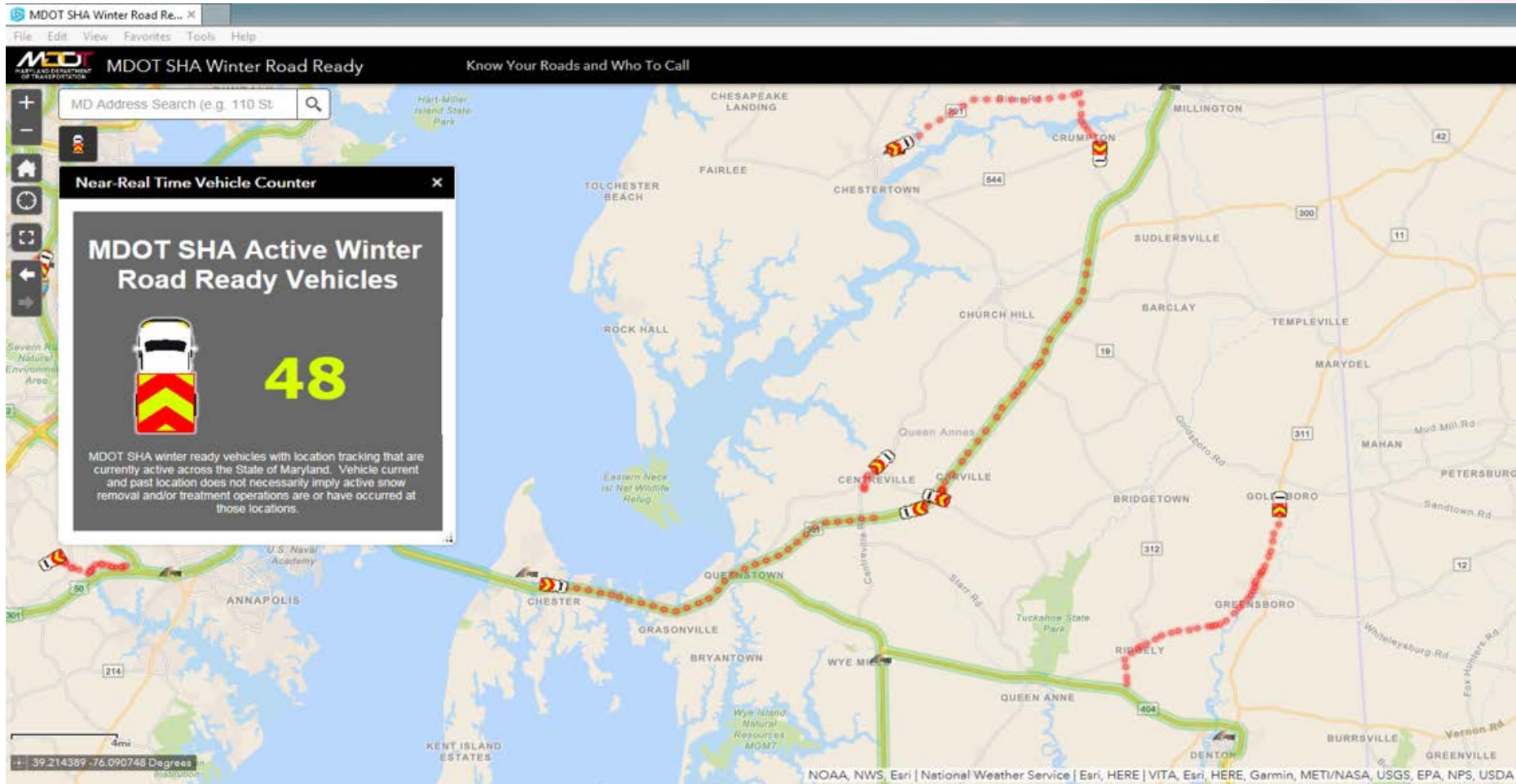
View current highway advisory messages from CHART dynamic message signs.

SEE MORE

S.T.O.R.M. – PUBLIC



S.T.O.R.M. – PUBLIC



MEDIA MESSAGING

MOVE OVER LAW REMINDER



- Passed in 2010 for emergency responders, law enforcement personnel, and CHART trucks who provide roadside assistance
- In 2014, the law was extended to include tow truck drivers
- In 2022, the law was expanded to include all stopped, standing, or parked vehicles

STAY BEHIND THE PLOWS

It's snowing just as hard in front of the plows as it is behind the plows, and the roads are worse!



QUESTIONS?

DC AREA MANAGEMENT – MDOT SHA

Montgomery County

- Greg Edwards, ADE-M
 - 301.513.7331
- Kola Fadairo, RME Gaithersburg
 - 301.948.2477
- Sidney Proctor, RME Fairland
 - 301.572.5166

Prince George's County

- Justin Sosebee, ADE-M
 - 301.513.7320
- Rick Shagogue, RME Laurel
 - 301.776.7619
- Ernie Johnson, RME Marlboro
 - 301.952.0555

SANDI SAUTER

Office of Maintenance

Deputy Director, Operations

410.582.5535

ssauter@mdot.maryland.gov