

BRIEFING ON MODIFIED EQUITY EMPHASIS AREAS

for TPB's Title VI/Environmental Justice Analysis

Wendy Klancher and Sergio Ritacco
TPB Transportation Planners

TPB Technical Committee
March 3, 2017



Structure of Presentation

- Provide an overview of:
 - Phase 1 and 2 of the Enhanced Title VI/Environmental Justice (EJ) Analysis
 - Changes to the Equity Emphasis Areas (EEAs)
 - Consultation conducted to date
- Detail the modified EEA methodology and show the new map

TPB will be asked to endorse the modified EEA's at its
March 15 meeting



Purpose of the Enhanced Title VI/EJ Analysis

Federal Requirement: The TPB must examine the Constrained Long-Range Transportation Plan for any disproportionately high and adverse impacts on low-income and minority populations.

Enhanced Title VI/EJ Analysis – Two Phases:

1. Identification of concentrations of low-income and/or minority populations (“Equity Emphasis Areas”)
2. Analysis of the 2016 CLRP amendment using multiple accessibility and mobility measures

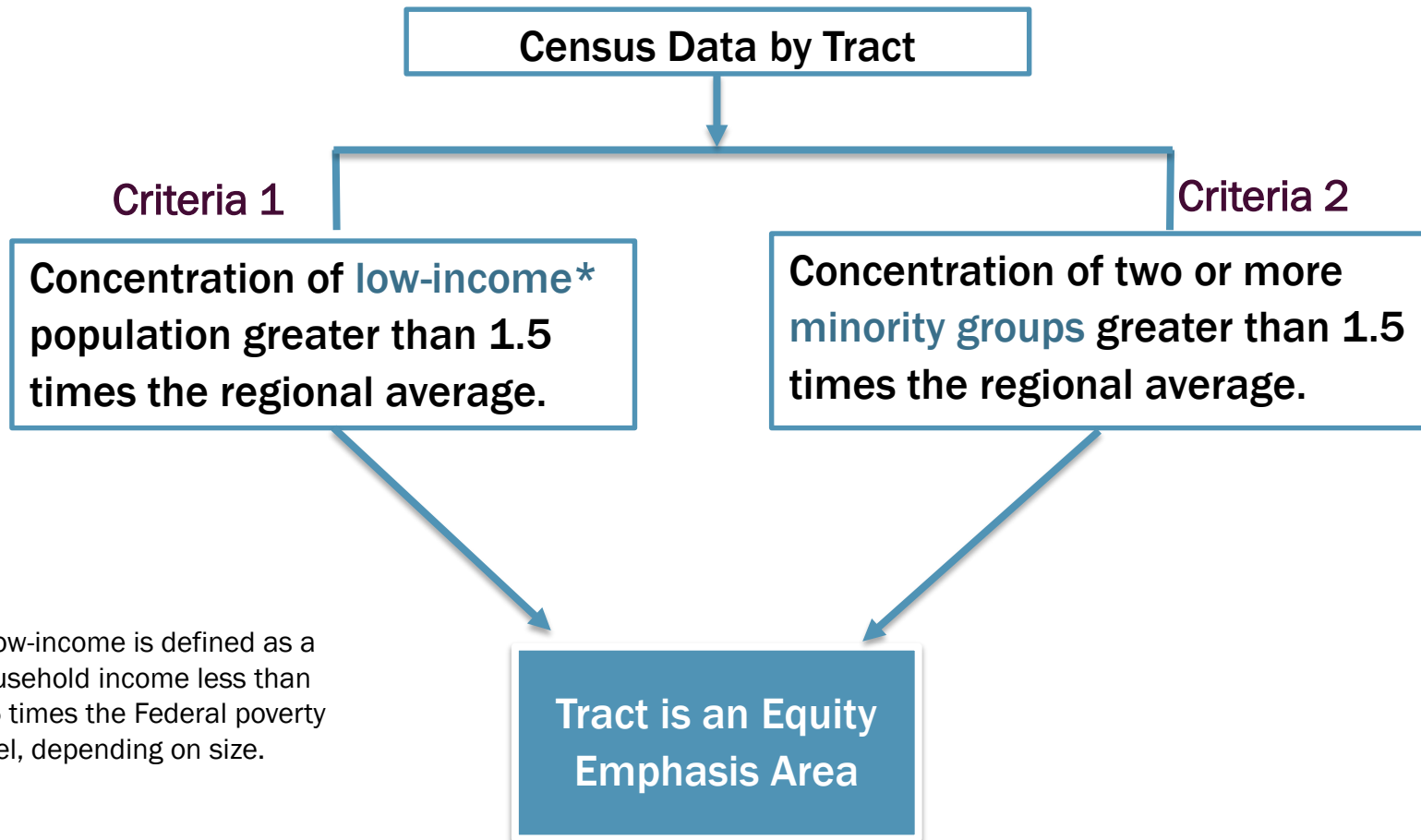


Modification to the Methodology for the Equity Emphasis Areas (EEAs)

- During the January TPB meeting, concerns were expressed that areas with **high concentrations of a single minority group were not included as EEAs**
- Staff re-examined the methodology and conducted sensitivity tests to identify a modified method to address the concerns



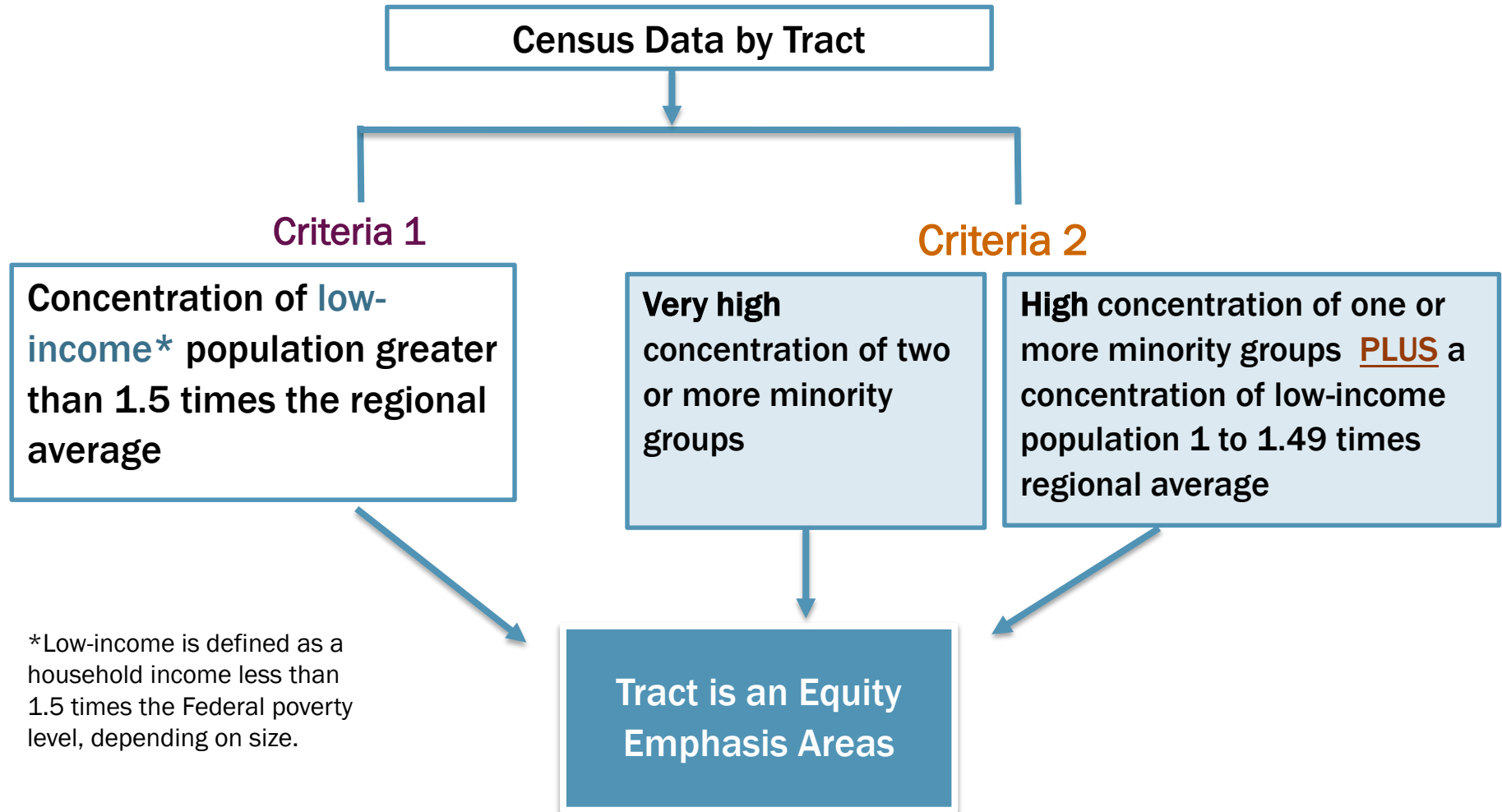
Original Approach for EEAs



*Low-income is defined as a household income less than 1.5 times the Federal poverty level, depending on size.



Modified Approach for EEAs



*Low-income is defined as a household income less than 1.5 times the Federal poverty level, depending on size.



Consultation on the Modified Methodology

- Planning Directors Technical Advisory Committee: **Feb 17**
- Webinar for TPB members and Technical Committee: **Feb 22**
- *Technical Committee: **March 3***

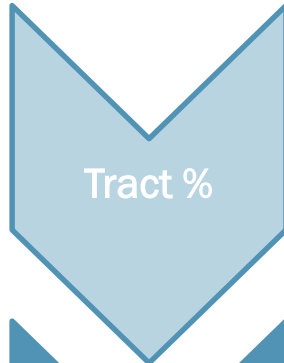
- Advisory Committee Briefings
 - Access for All Advisory Committee: **Feb 23**
 - *Citizens Advisory Committee: **March 8***



Modified Equity Emphasis Areas: Revised Scoring and Map



Quantitative Method (Index scores)



1. Determine the % of each Census tract's population for the following four groups:

- Low-Income
- African-American
- Asian
- Hispanic or Latino



2. Calculate the **Ratio of Concentration** ("times regional average) for each group in each Census tract; (Tract-level % divided by the total regional %)



3. Assign **Index Scores** corresponding to the Ratio of Concentration for low-income and minority populations



Criteria 1: Low-Income

Criteria 1 does not change and identifies tracts with concentration of low-income populations greater than or equal to 1.5 times the regional average and applies an index score

RATIO OF CONCENTRATION (ROC or times the regional average)	INDEX SCORE
	Low-Income
Between 1.5 and 3.0	4.5 to 9.0
Greater than 3.0	9.0
Index Score	4.5 to 9.0
<input checked="" type="checkbox"/> Equity Emphasis Area (Total Index \geq 4.00) <input type="checkbox"/> Not an Equity Emphasis Area (Total Index $<$ 4.00)	



Criteria 2: Minority Population and Secondary Low-Income

Criteria 2 was modified to identify tracts with:

- **Very high** concentrations of *two or more* minority population groups, OR
- **High** concentrations of *one or more* minority population groups with a low-income concentration at or above the regional average (secondary threshold)

RATIO OF CONCENTRATION (ROC or times the regional average)	INDEX SCORE			
	Low-Income	African American	Asian	Hispanic or Latino
Less than 1.0	0	0	0	0
Between 1.0 and 1.49	1.0 to 1.49			
Between 1.5 and 3.0	See Criteria 1 (4.5 to 9.0)	1.5 to 3.0	1.5 to 3.0	1.5 to 3.0
Greater than 3.0	See Criteria 1 (9.0)	3.0	3.0	3.0
Total Index Score	Index scores are totaled (ranging from 0 to 10.49)			
<input checked="" type="checkbox"/> Equity Emphasis Area (EEA) (Total Index \geq 4.00) <input type="checkbox"/> Not an Equity Emphasis Area (EEA) (Total Index $<$ 4.00)				

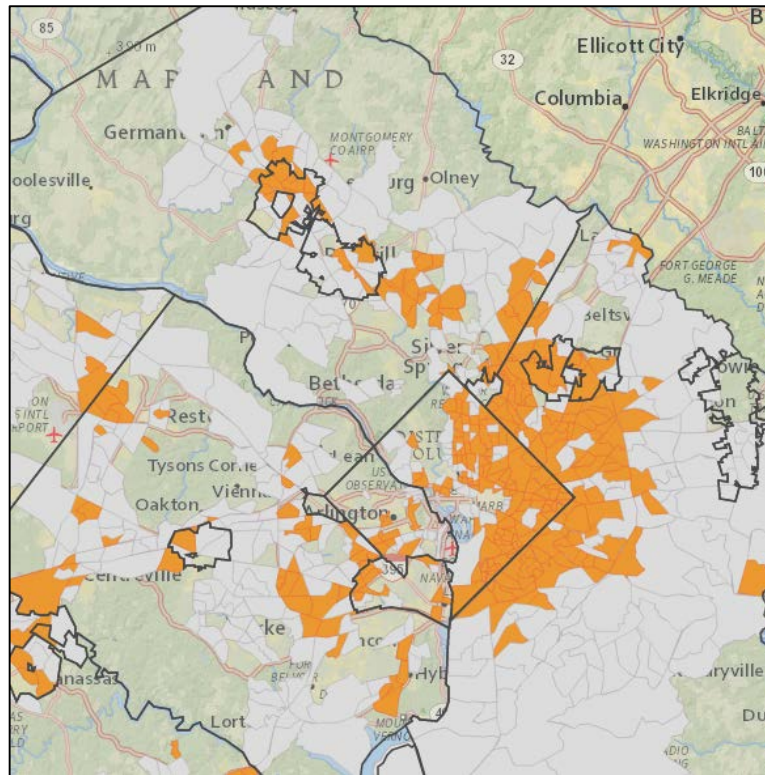


Equity Emphasis Areas

<https://gis.mwcog.org/webmaps/tpb/clrp/ej/>

Username: review

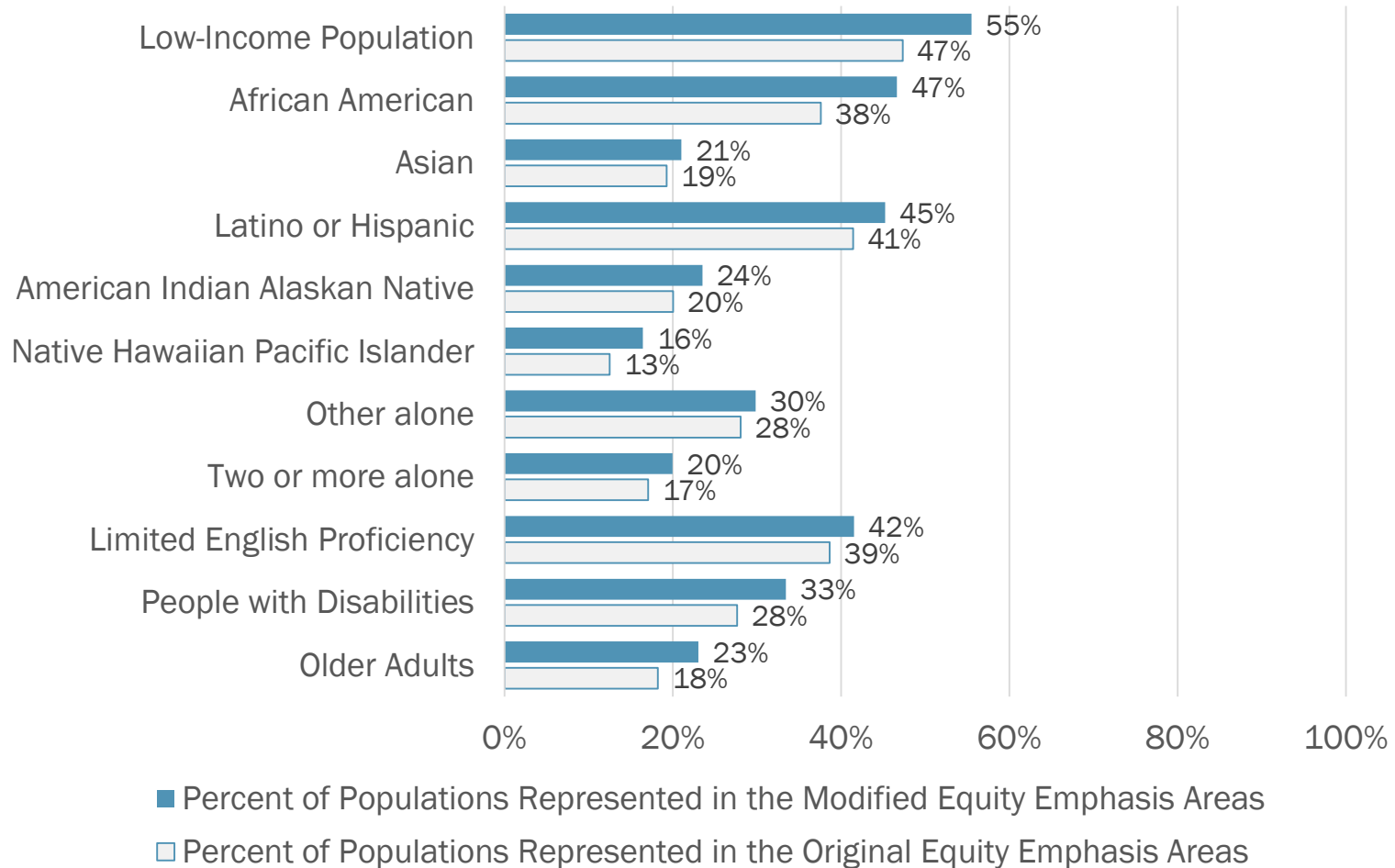
Password (case sensitive): draft.map



Right click on map to open hyperlink to interactive version



Population's Represented



Next Steps

After TPB endorsement of the Equity Emphasis Areas, TPB staff will:

- Revise Interactive Online Tool with additional data and make widely available (late March)
- Conduct the Title VI/EJ analysis of the 2016 CLRP (late March-May)
- Develop and review draft findings (May-June)
- Brief the TPB (June-July)
- Develop a report documenting methodology and findings (June-July)



Wendy Klancher

TPB Principal Transportation Planner

(202) 962-3321

wklancher@mwkog.org

Sergio Ritacco

Transportation Planner

(202) 962-3232

sritacco@mwkog.org

mwkog.org/TPB

Metropolitan Washington Council of Governments

777 North Capitol Street NE, Suite 300

Washington, DC 20002



National Capital Region
Transportation Planning Board