



THE FINANCIALLY CONSTRAINED LONG-RANGE TRANSPORTATION PLAN (CLRTP)

Sept. 11, 2012

Cooperative Forecasting and Data Subcommittee

Agenda

- The CLRP: Basics
- Factors Shaping the CLRP
- Selected Projects in the CLRP
- Schedule for the 2013 CLRP

The CLRP: Basics

- Updated annually with regionally significant projects and programs planned through 2040
- Policy Framework: Goals and objectives of the TPB Vision, adopted in 1998
- Must meet federal regulations, including financial constraint: Includes only projects for which funding is “reasonably expected to be available”.
- Developed by state, regional and local transportation agencies and approved by the Transportation Planning Board (TPB)
- Most recent update approved July 18, 2012

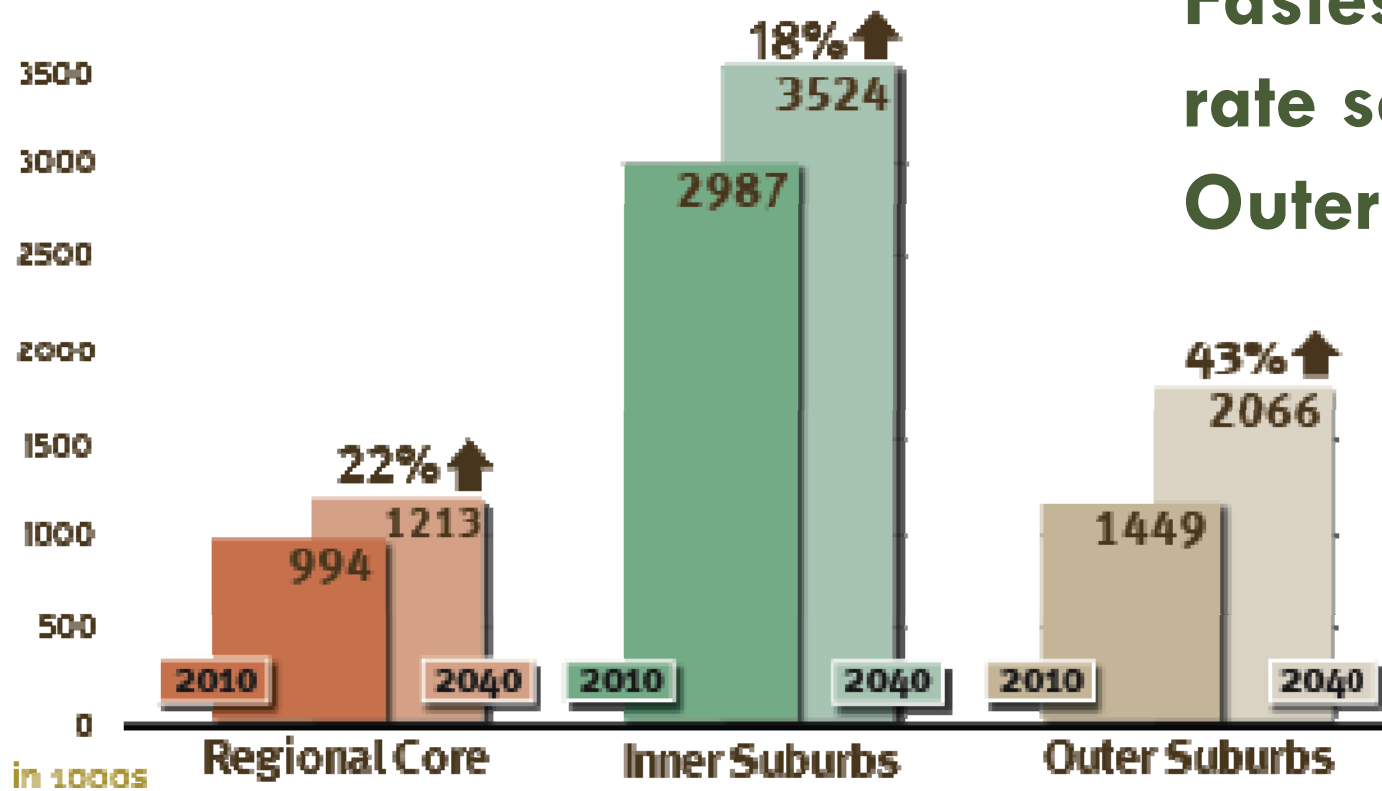
Factors Shaping the CLRP

- **Land Use Forecasts**
- **Financial Constraint**
- **Transit Fares and Constraint**

Factors Shaping the CLRP

Land Use Forecasts

Change in Regional Population, 2013 to 2040
5.4 to 6.8 Million People (25%↑)

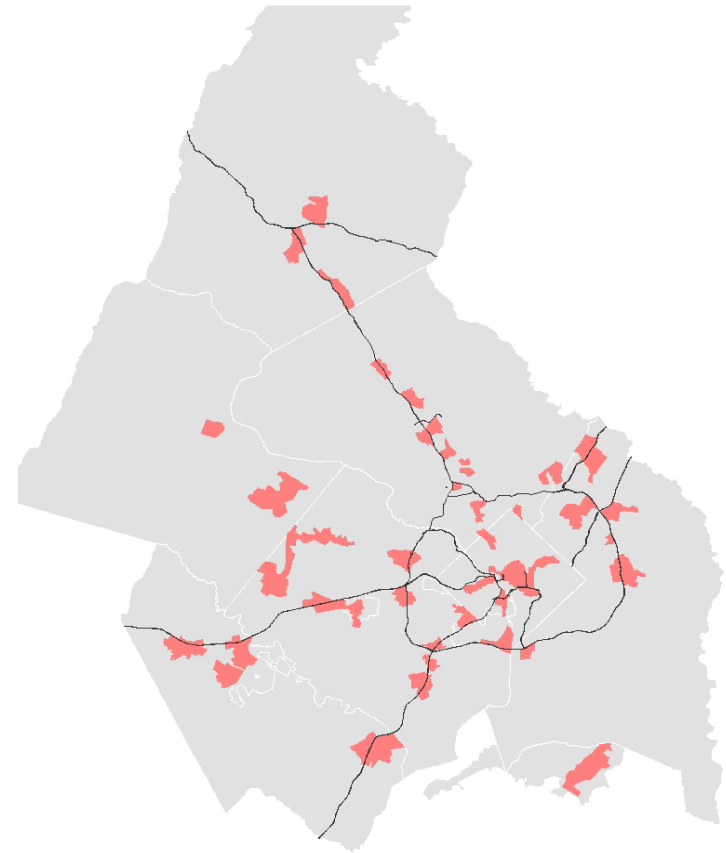


Fastest growth rate seen in the Outer Suburbs

Factors Shaping the CLRP

Households and Jobs in Regional Activity Centers

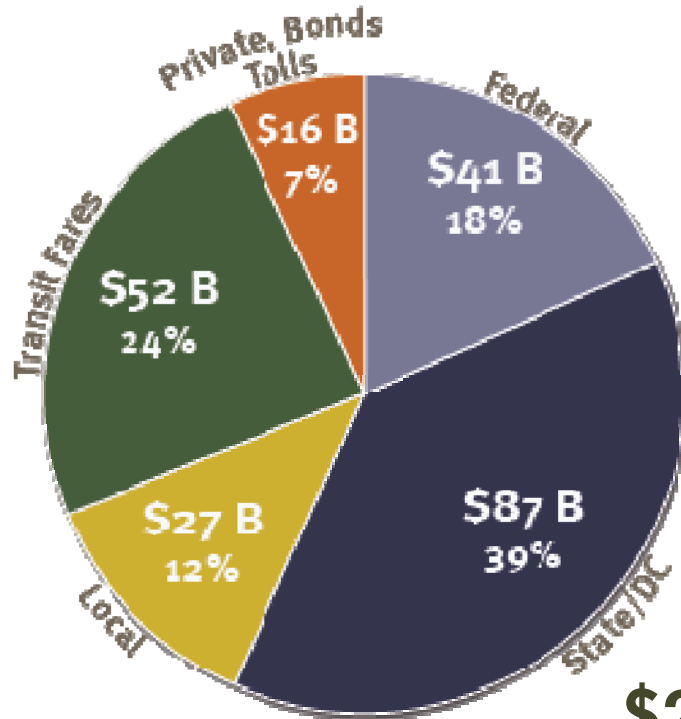
- From 2005 to 2040, households in Regional Activity Centers will increase by 107% - more than twice the rate for the region as a whole.
- By 2040, 55% of the region's jobs and 19% of the region's households are forecast to be concentrated in the Regional Activity Centers that make up less than 5% of the region's total land area.



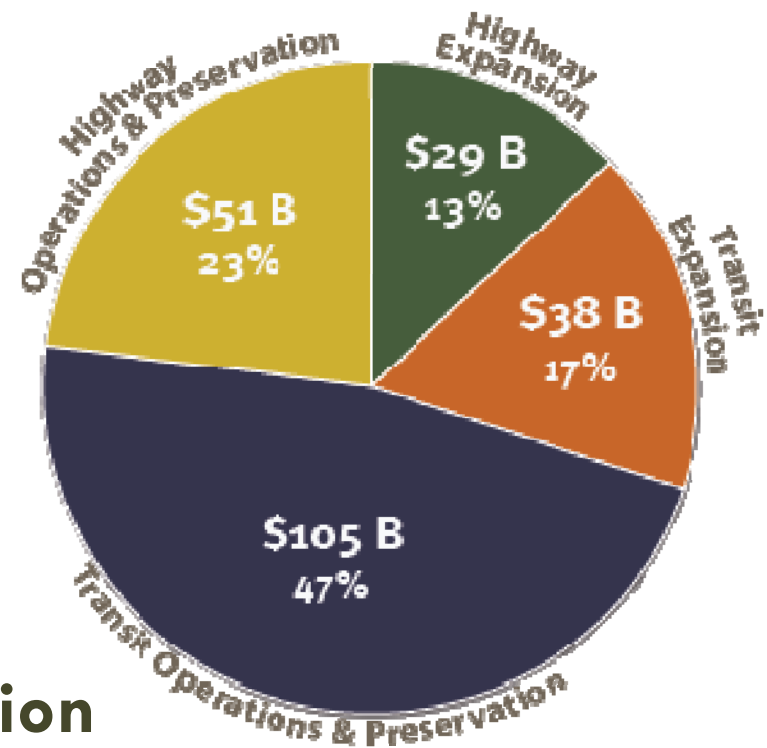
Factors Shaping the CLRP

Financial Constraint

Revenues by Funding Source



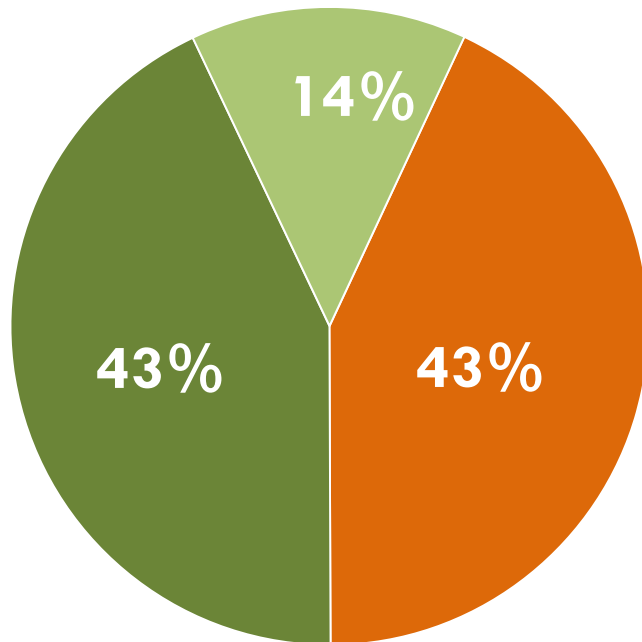
CLRP Expenditures, 2010 to 2040



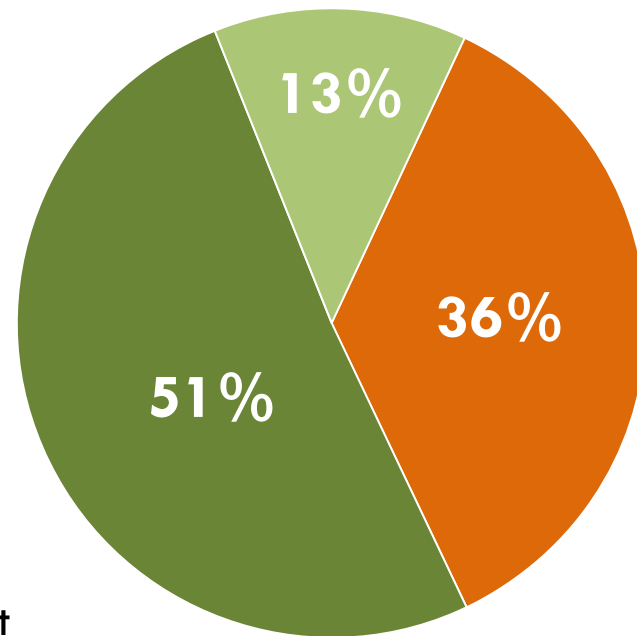
\$222.9 Billion

Factors Shaping the CLRP

Financial Constraint



2006 CLRP



2010 CLRP

Factors Shaping the CLRP

Transit Fares and Constraints

- Transit fares increased in 2010.
- Federal and local funding for Metro Rehabilitation expires in 2020.
- Transit ridership will be constrained at 2020 service levels.

Selected Projects in the CLRP

1. Dulles Corridor Rapid Transit
2. Corridor Cities Transitway
3. I-270/US 15 Corridor
4. Intercounty Connector
5. Capital Beltway HOT Lanes
6. DC Streetcar
7. South Capitol Street Bridge
8. 11th Street Bridge
9. I-95 HOV/HOT Lanes
10. Potomac Yards Transitway
11. Columbia Pike Streetcar
12. Purple Line



Dulles Corridor Rapid Transit

- In CLRP since 1999
- Covers a 23.1-mile extension of the Metrorail system from Fairfax County to Washington Dulles International Airport.
- Cost: \$5.6 billion
- \$3.6 billion programmed in the FY2013-2018 TIP
- Phase I under construction
- Completion: 2014 and 2015



Corridor Cities Transitway

- ❑ In CLRP since 2003
- ❑ Covers a 14-mile corridor from Rockville to Clarksburg, and will be an LRT or BRT line.
- ❑ Cost: \$871 million
- ❑ \$5 million programmed for PE in FY 13-18 TIP
- ❑ Completion: 2020



I-270/US 15 Corridor

- ❑ In CLRP since 2003
- ❑ Widen I-270 from Shady Grove Metro Station to Biggs Ford Rd., possibly including HOV and/or express toll lanes.
- ❑ Cost: \$3.4 billion
- ❑ Not currently in the TIP
- ❑ Completion: 2030



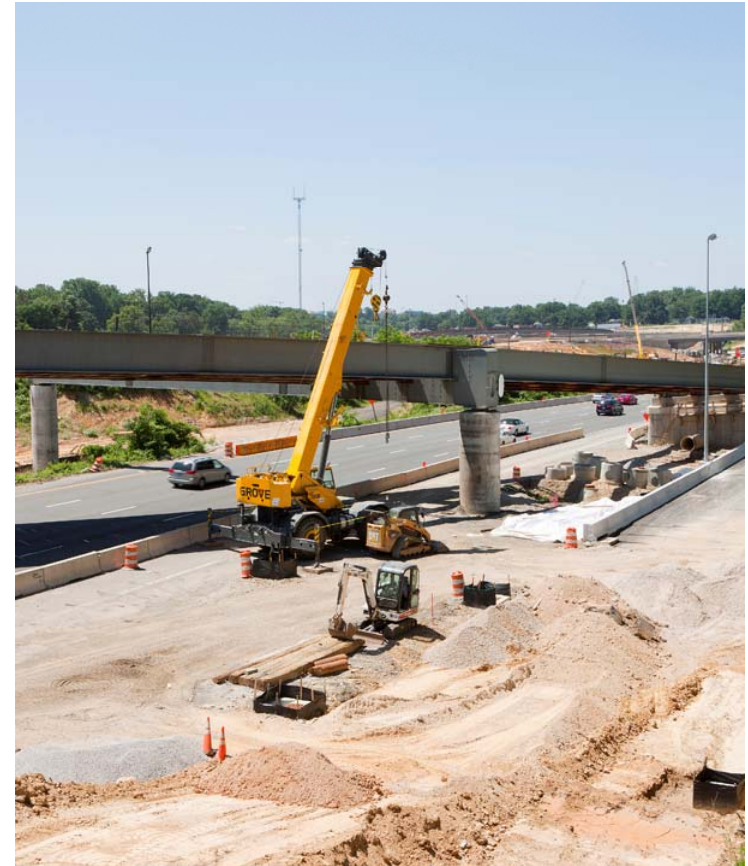
Intercounty Connector

- In CLRP since 2004
- Construct a new 18-mile east-west highway in Montgomery and Prince George's Counties between I-270 and I-95/US 1.
- Cost: \$2.5 billion
- I-270 to I-95 Complete, I-95 to US 1 – 2014



Capital Beltway HOT Lanes

- ❑ In CLRP since 2005
- ❑ Widen I-495 to 12 lanes with 4 HOT lanes for 15 miles from VA 193 connecting to I-95/ I-395 at the Springfield Interchange.
- ❑ Cost: \$1.6 billion
- ❑ Under construction
- ❑ Completion: 2013, 2030



DC Streetcar Project

- In CLRP since 2006
- Implement streetcar service from Firth Sterling Ave. and South Capitol St. to Howard Rd. and Martin Luther King Jr. Ave. and on H St./Benning Road from Union Station to Oklahoma Ave. NE
- Cost: \$42 million (\$4.7 million programmed in FY13-18 TIP)
- Under construction
- Completion: 2013, 2016



South Capitol Street Bridge

- ❑ In CLRP since 2006
- ❑ Covers a 7.5-mile corridor, including four interchanges and two new drawbridges.
- ❑ Cost: \$822.5 million (\$519 million in FY 13-18 TIP)
- ❑ Completion: 2015



11th Street Bridges

- ❑ In CLRP since 2006
- ❑ Upgrade of the existing 11th St. bridges and ramps, connecting the Anacostia and Southeast Freeways.
- ❑ Cost: \$475 million (\$125 million programmed in FY 13-18 TIP)
- ❑ Under construction
- ❑ Completion: 2013



I-95 HOV/HOT Lanes

- In CLRP since 2007
- Widen existing HOV lanes from 2 to 3 and convert to HOT lanes between Prince William Pkwy and 2 miles north of I-495. Convert existing 2 HOV lanes between PW Pkwy and Dumfries Rd. to HOT lanes.
- Cost: \$889million
- \$1 billion programmed in FY13-18 TIP
- Under construction
- Completion: 2015

Potomac Yards Transitway

- In CLRP since 2007
- Buses will run on a combination of dedicated transitway and mixed traffic between Four Mile Run and the Braddock Road Metro Station.
- Cost: \$18.1 million
- Completion: 2013



Columbia Pike Streetcar

- In CLRP since 2008
- From Skyline to Pentagon City Metro Station.
- Cost: \$135 million (\$10 million programmed in FY13-18 TIP for PE)
- Completion: 2017



Purple Line

- In CLRP since 2009
- A 16-mile corridor from the Bethesda to New Carrollton Metro Stations.
- Cost: \$1.79 billion (\$100 million programmed in TIP for PE/ROW)
- Completion: 2020



Schedule for the 2012 CLRP



24

2012

- Oct. 17 TPB Releases Final Call for Projects
- Dec. 4 Deadline for Project Submissions

2013

- Jan. 10-Feb. 9 Public Comment Period
- Feb. 20 TPB Approves Project Submissions for Air Quality Conformity Analysis
- June 13-July 13 Final Public Comment Period
- July 17, 2013 TPB Approves Air Quality Analysis and CLRP