



# PRESTO!

Plan for Regional  
Sustainability Tomorrow

Briefing to WashCOG Planning Directors

January 16 , 2015

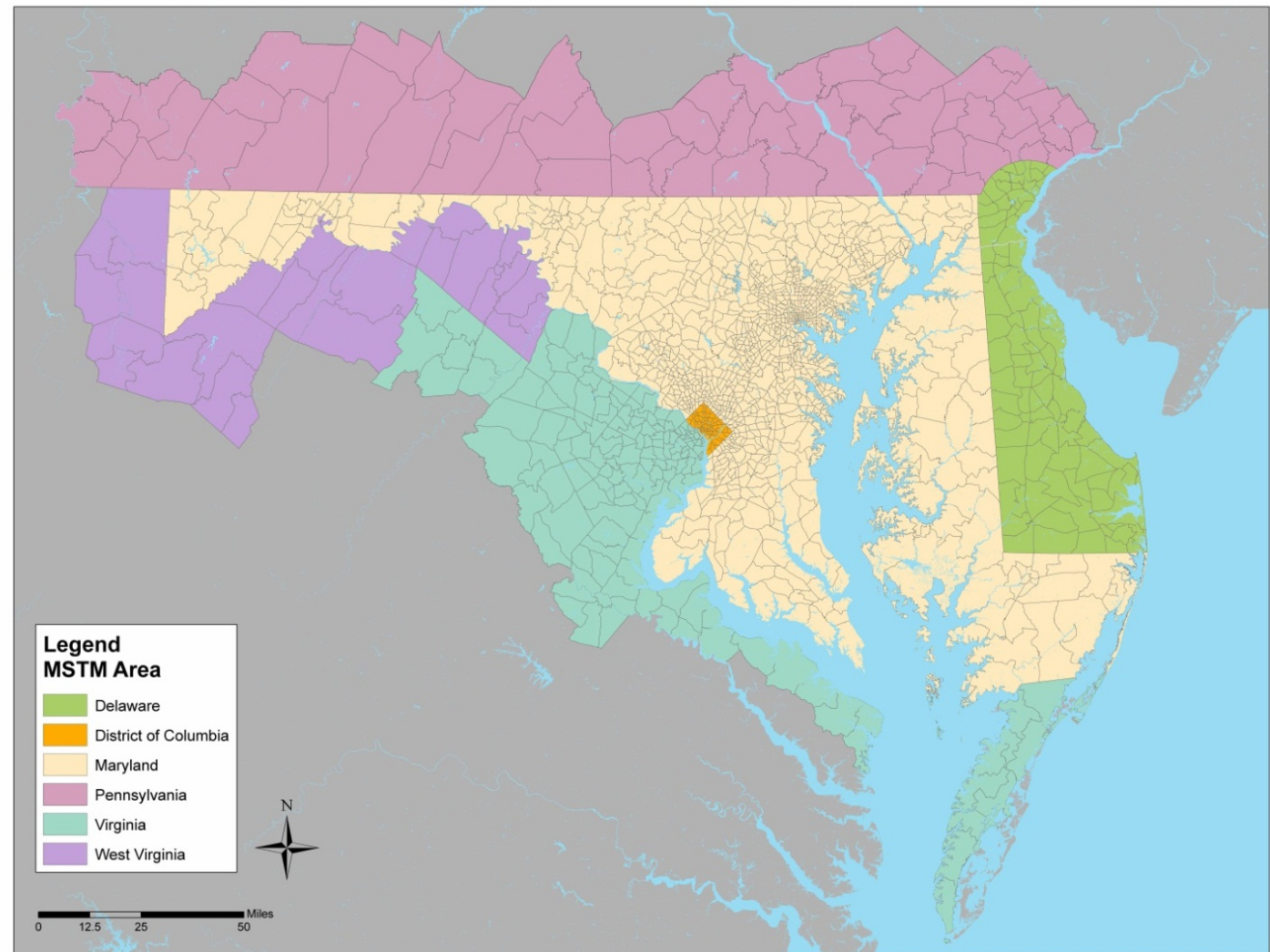
Uri Avin FAICP



# NCSG Travel and Land Use Modeling Geography

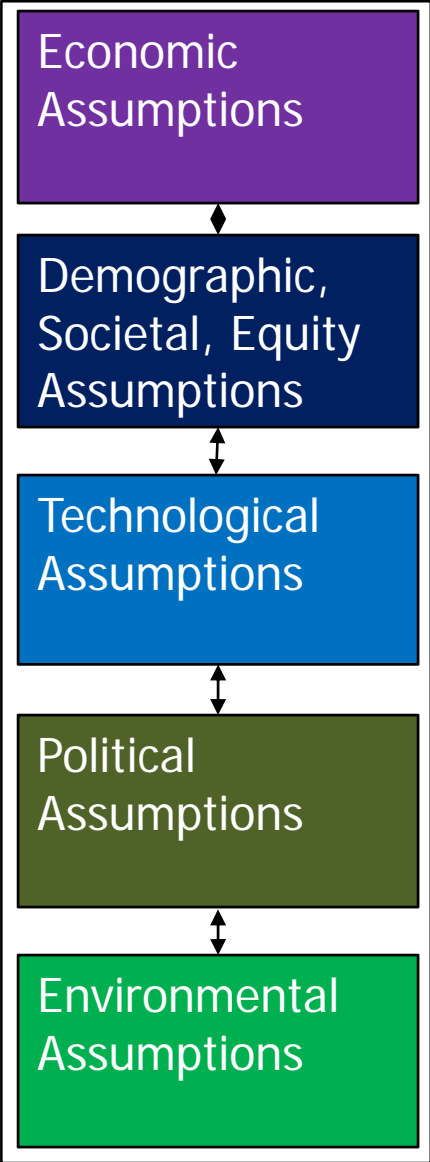


- Incorporates both MPO models
- Use CLRP for baseline
- Statewide modeling but focusing on the Balto-Wash region
- Development capacity data gaps for Va.

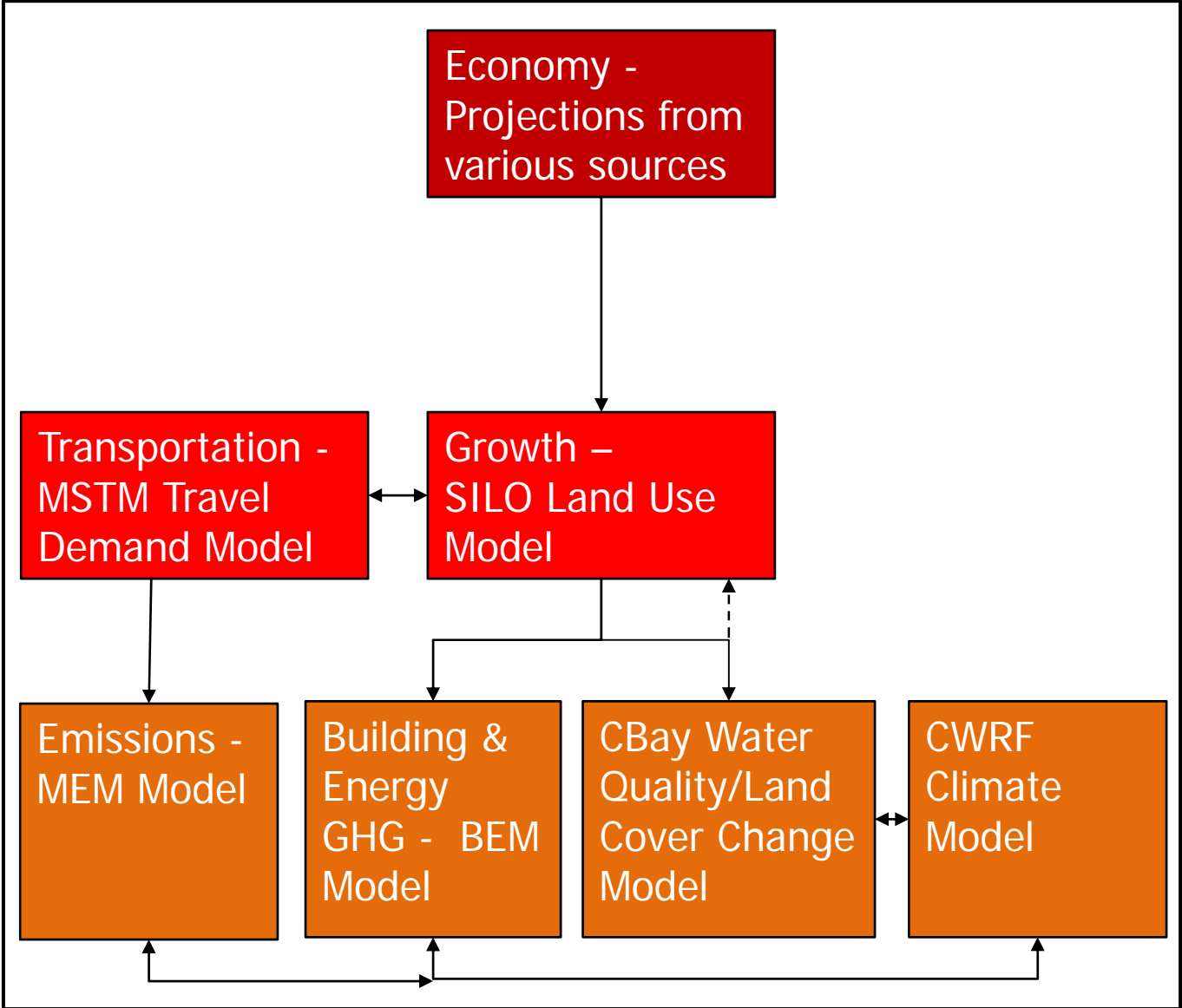


# Scenario Drivers and Modeling Framework

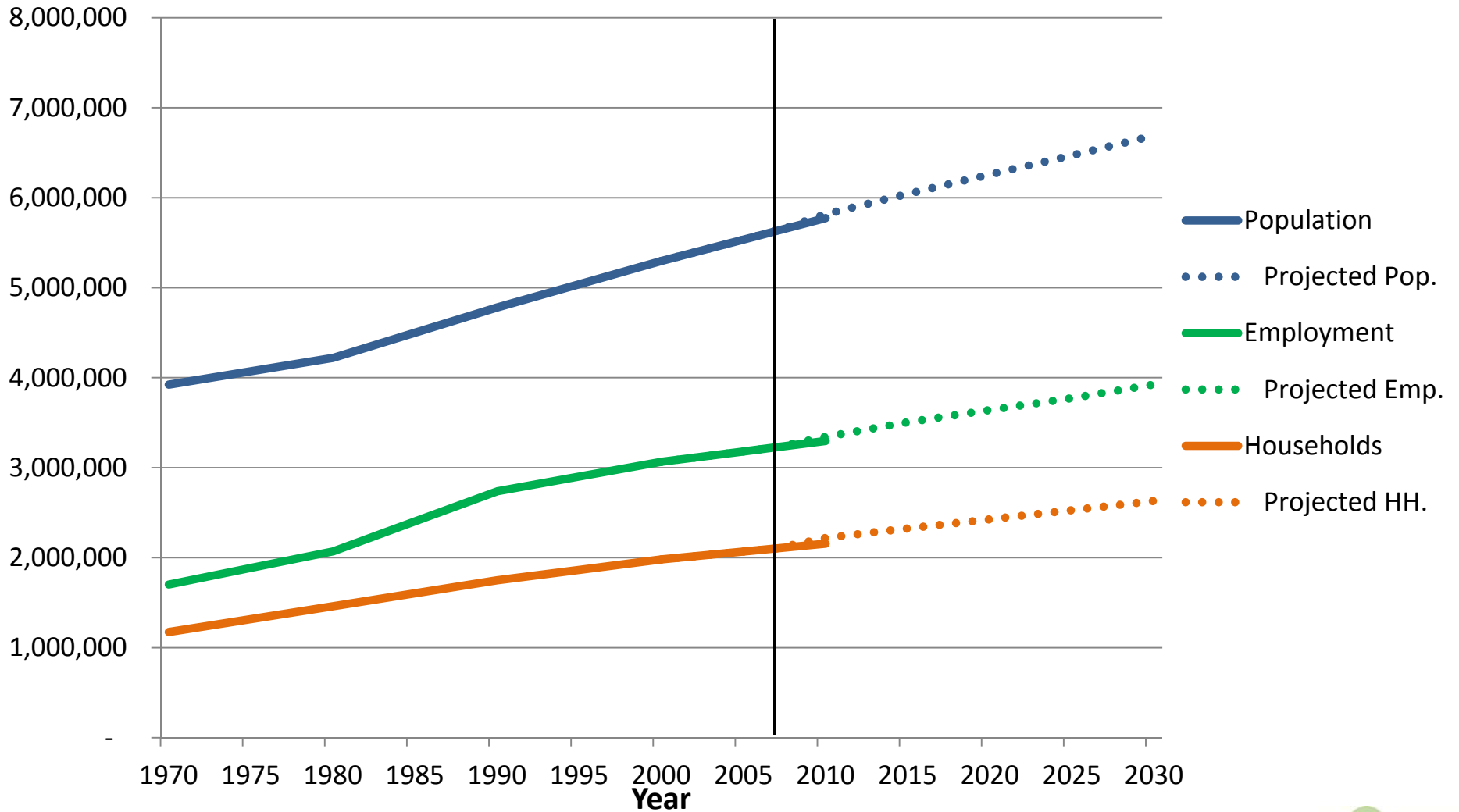
## Scenario Drivers



## Scenario Models



# Job, Household, Population Growth Remains Steady

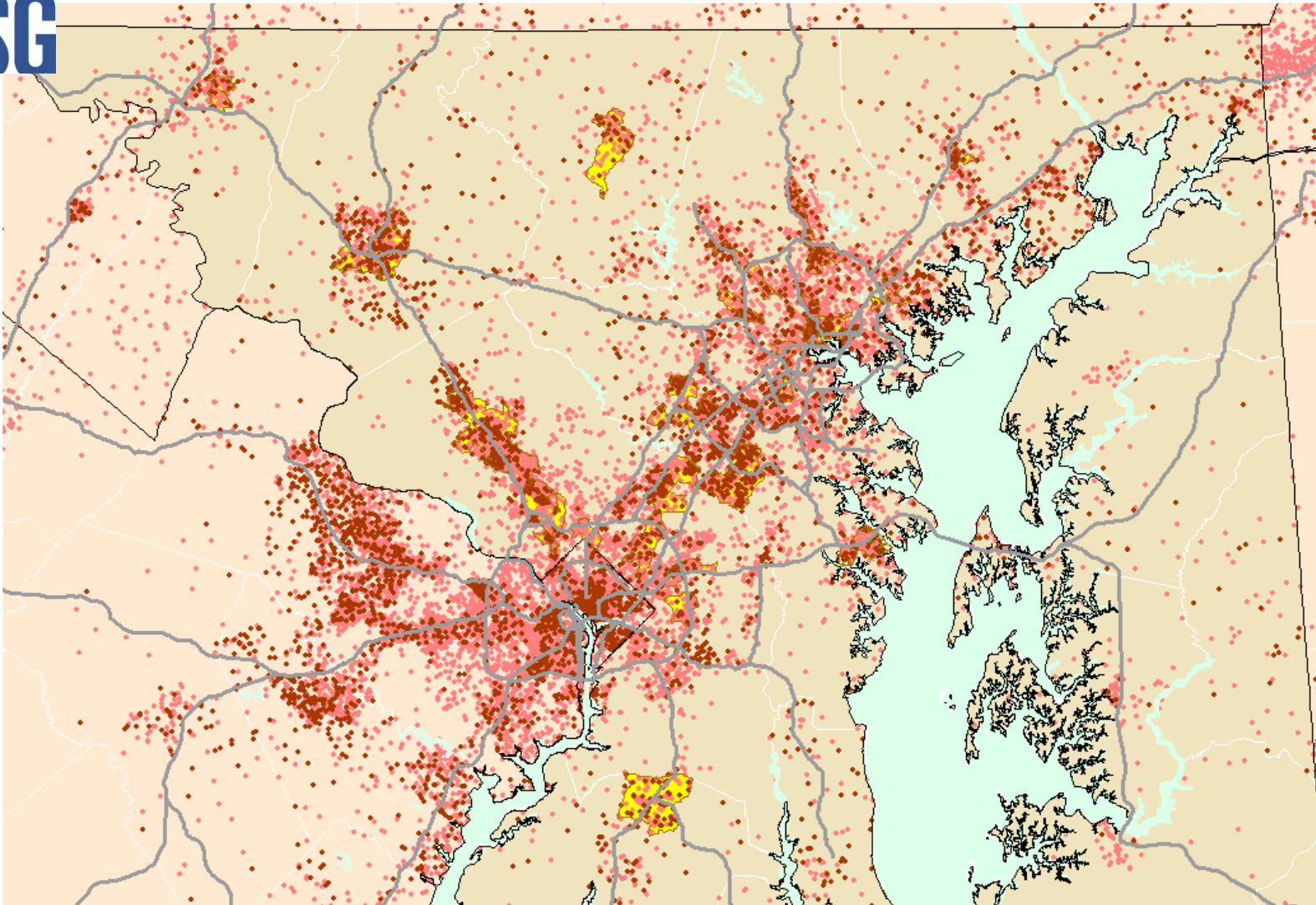


Results

Source: US Census, BLS, CLRP



# Employment Grows In and Near Job Centers



- 1 Dot = 300 Employment in 2007
- 1 Dot = 300 New New Employment in 2030
- Employment Centers

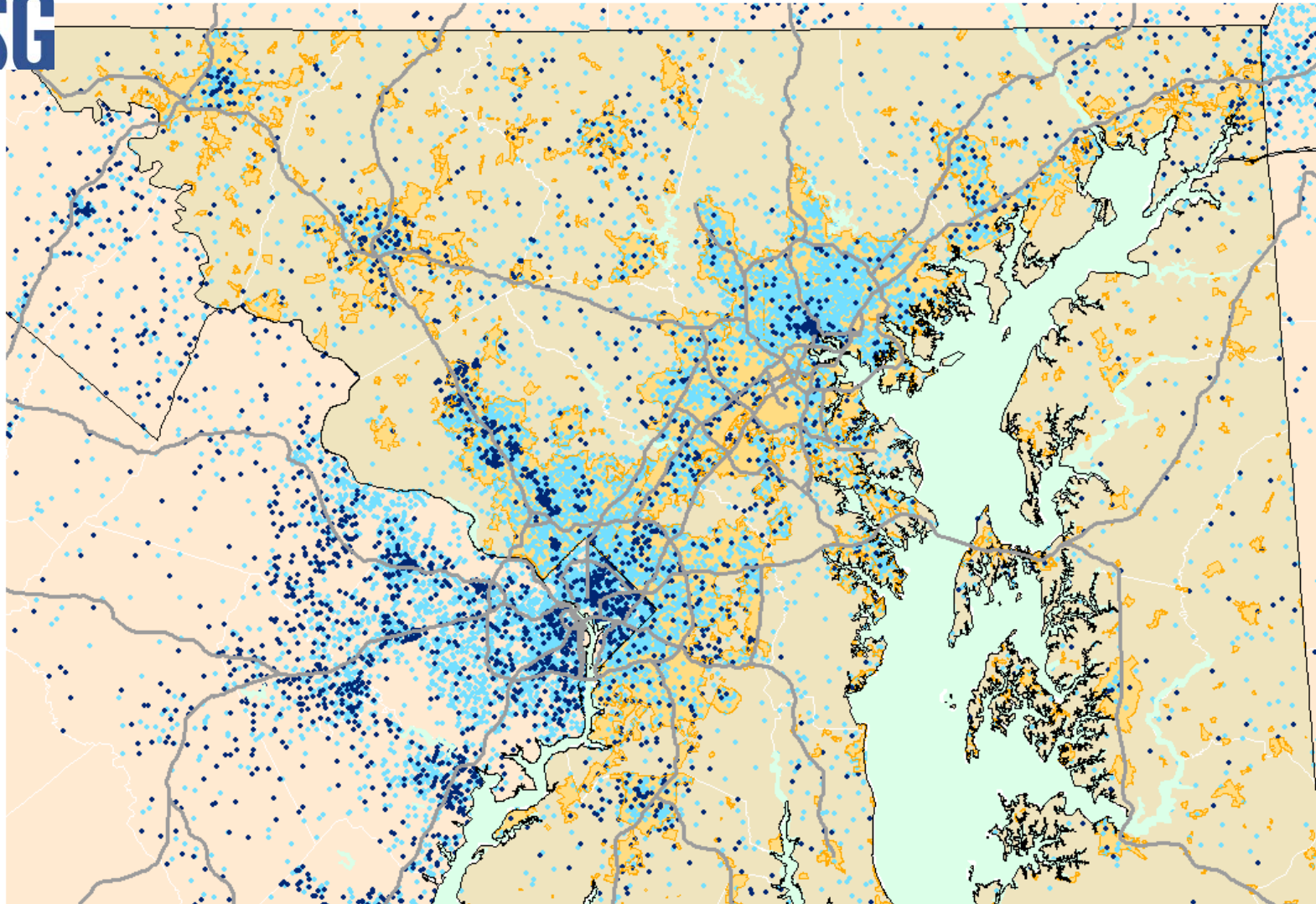


Results

Source: CLRP



# New Households Locate Primarily Within Priority Funding Area



- 1 Dot = 300 Households in 2007
- 1 Dot = 300 New Households in 2030
- Priority Funding Area

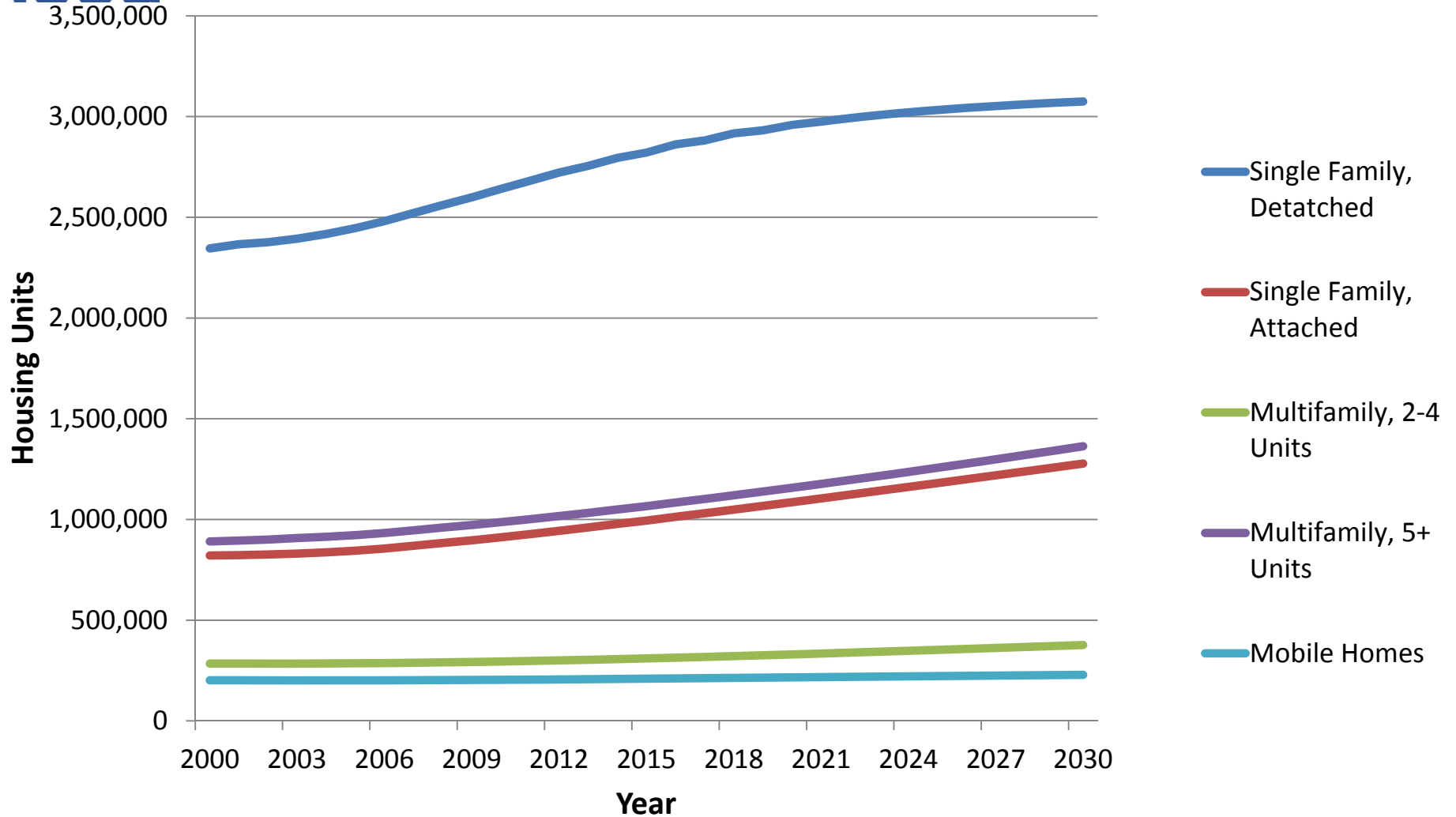


Results

Source: CLRP



# Single Family Homes Remains Dominant Housing Choice

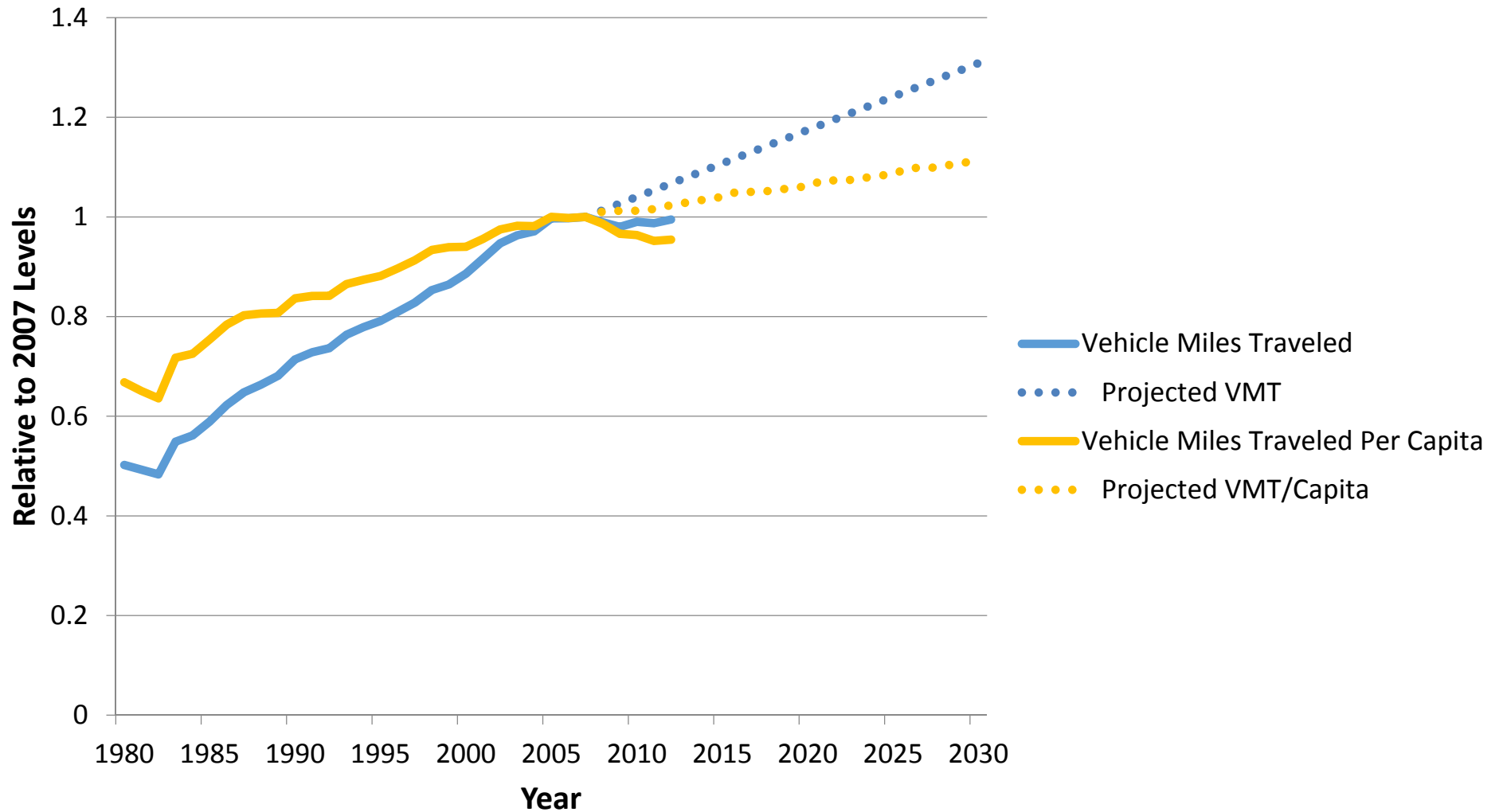


Results

Source: SILO Model

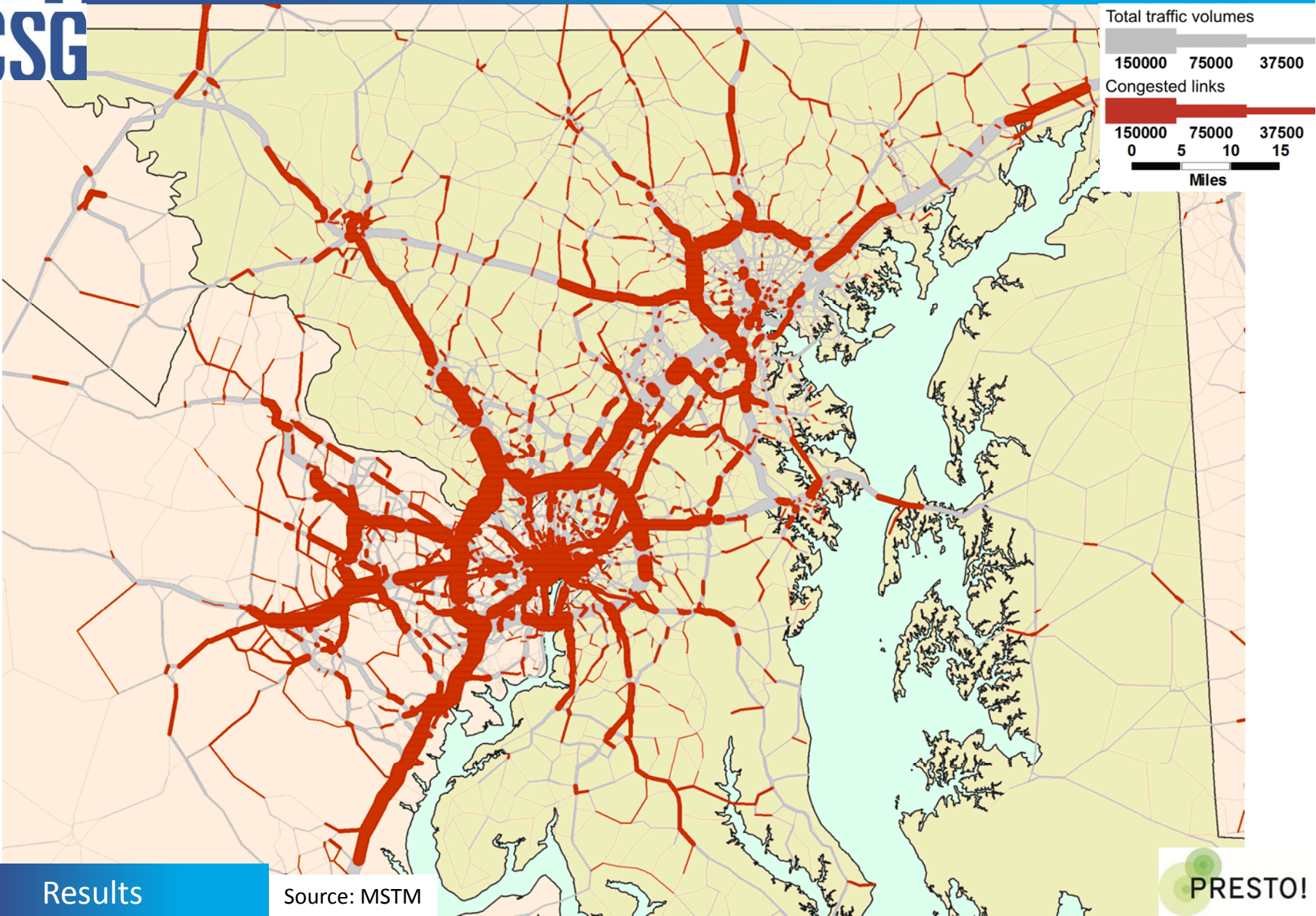


# Model Projects Increased Driving





# Congestion Worsens Almost Everywhere

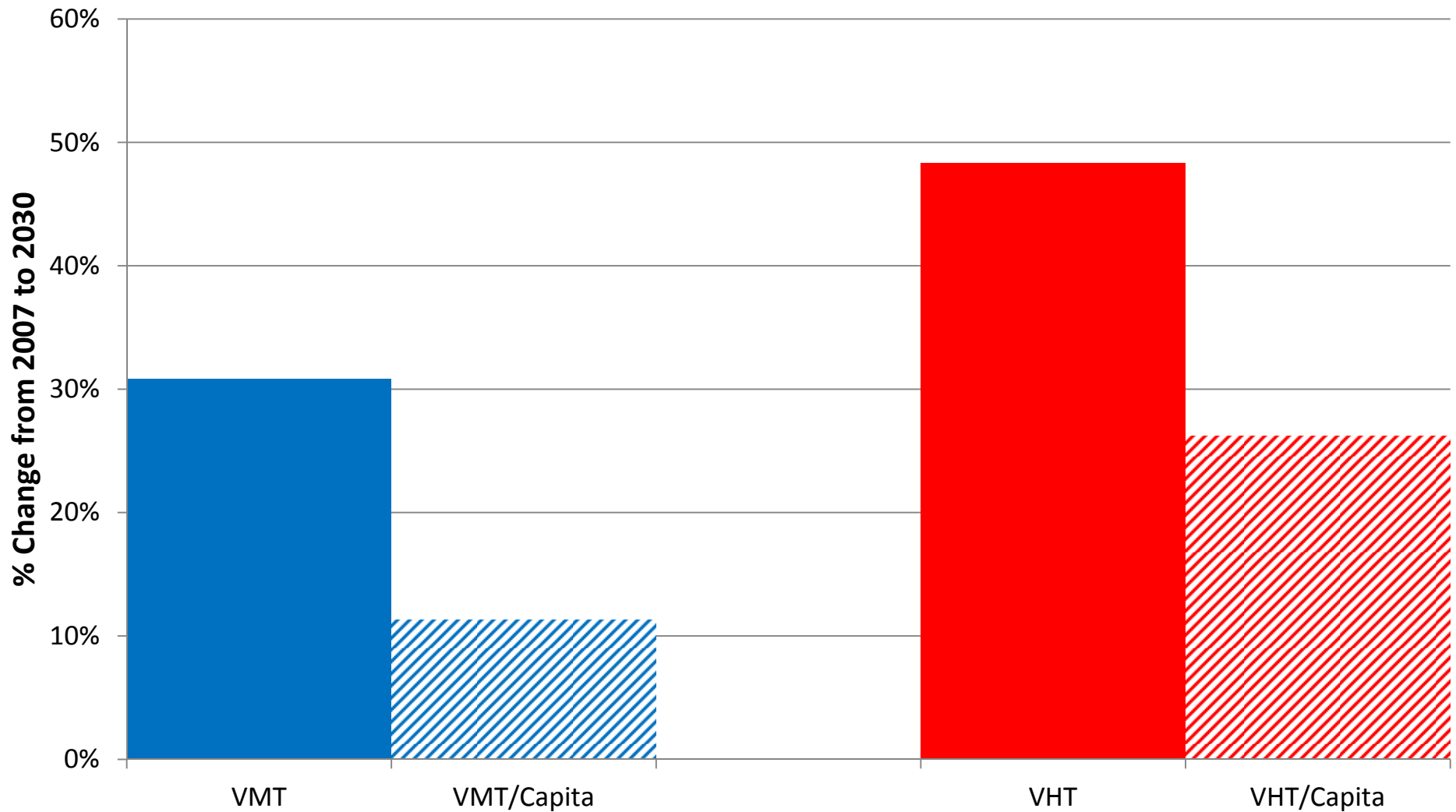


Results

Source: MSTM



# A Few More Miles for Each Driver; Much More Time Spent Driving

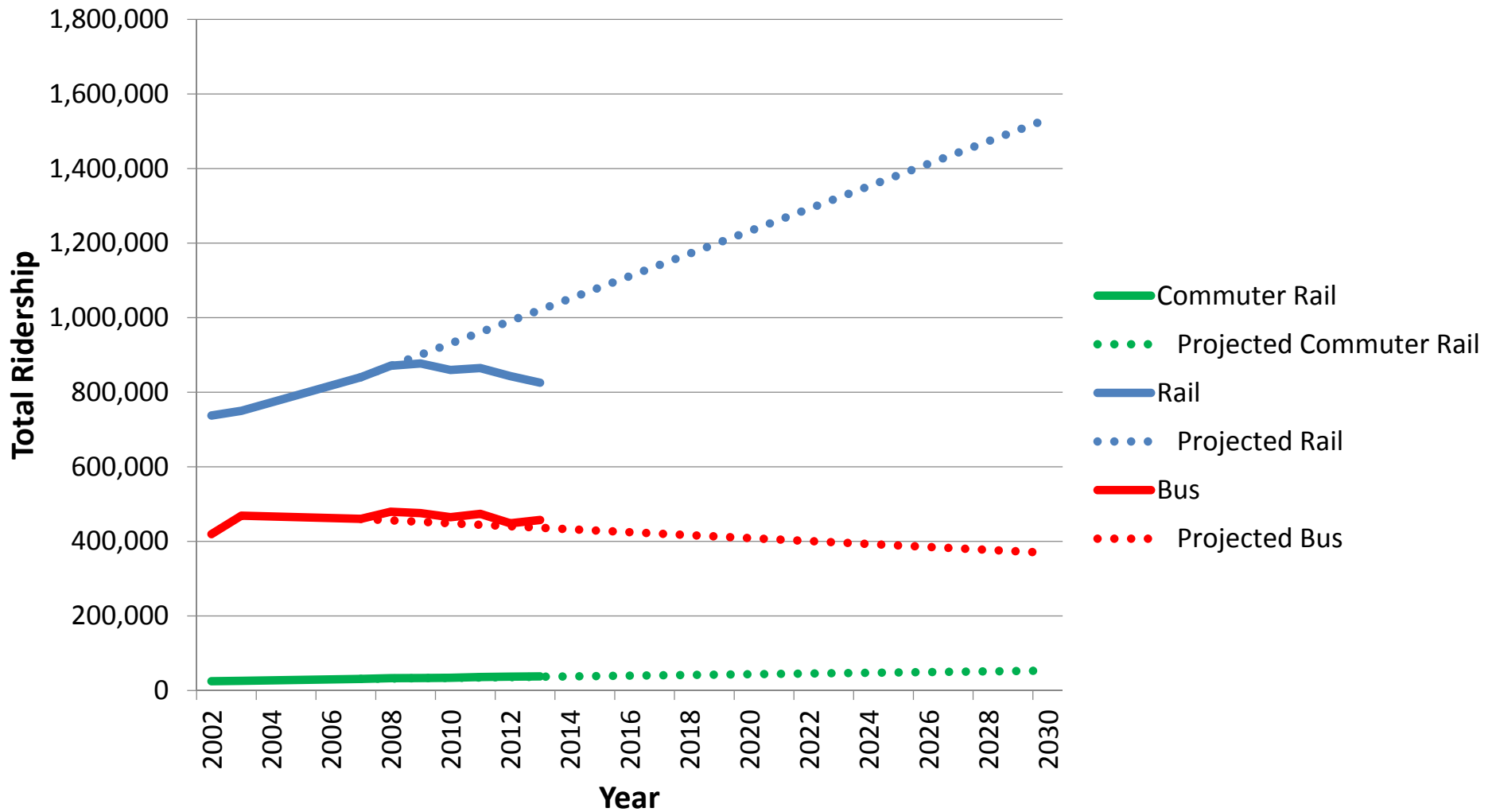


Results

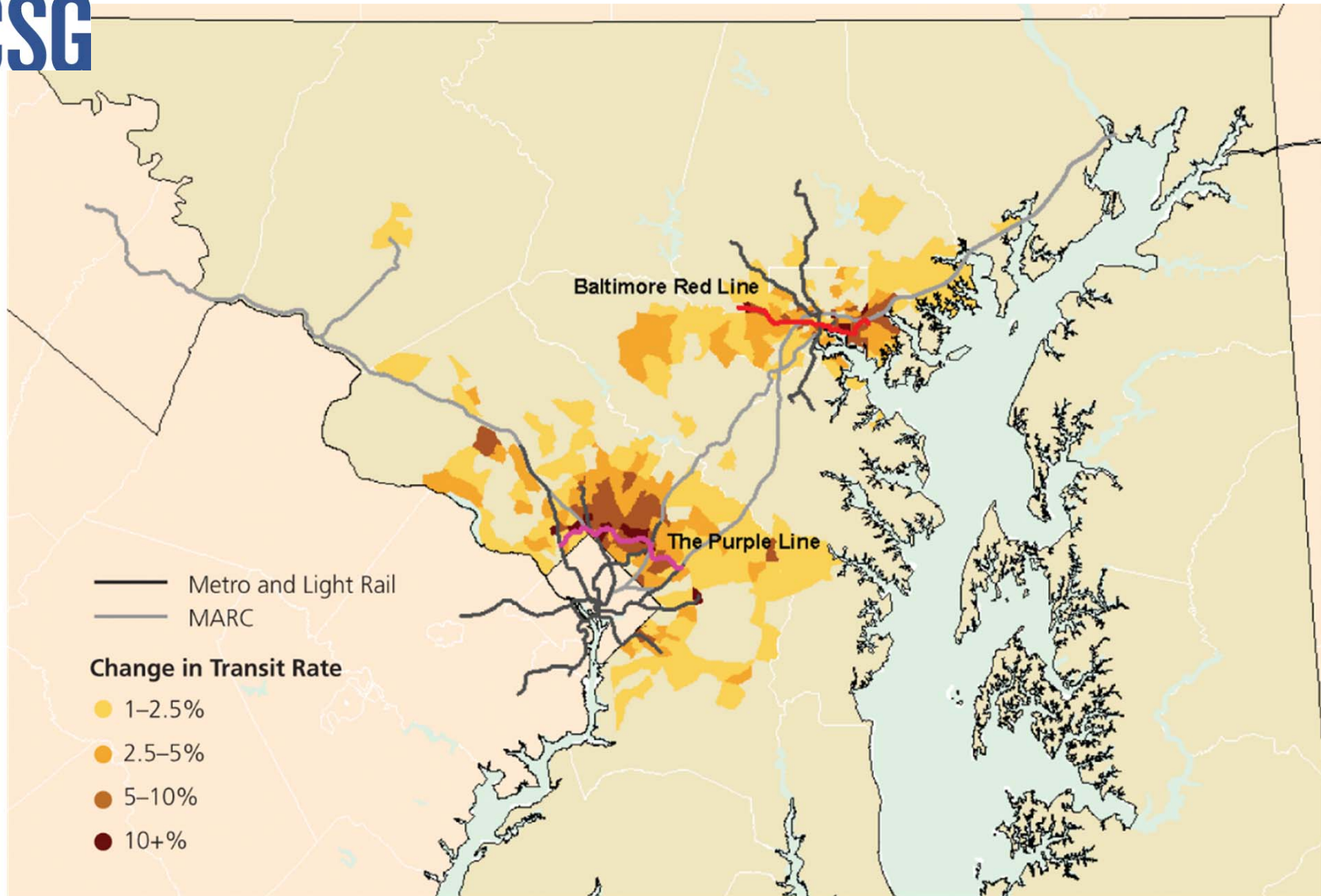
Source: MSTM



# Metro and Light Rail Demand Double



# Transit Use Increases Near Red and Purple Line



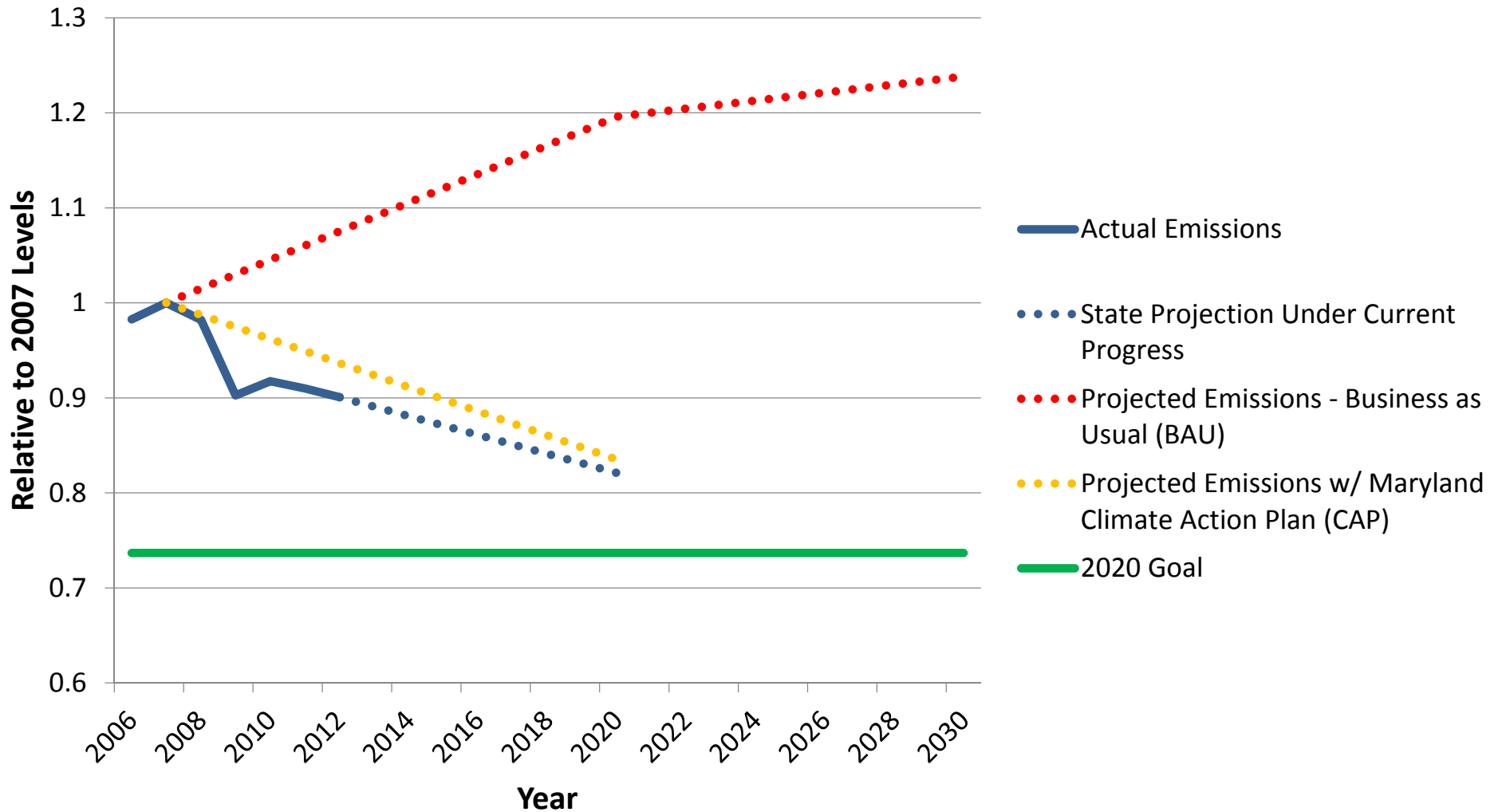
Results

Source: MSTM



PRESTO!

# Future GHG Emissions Very Policy Dependent

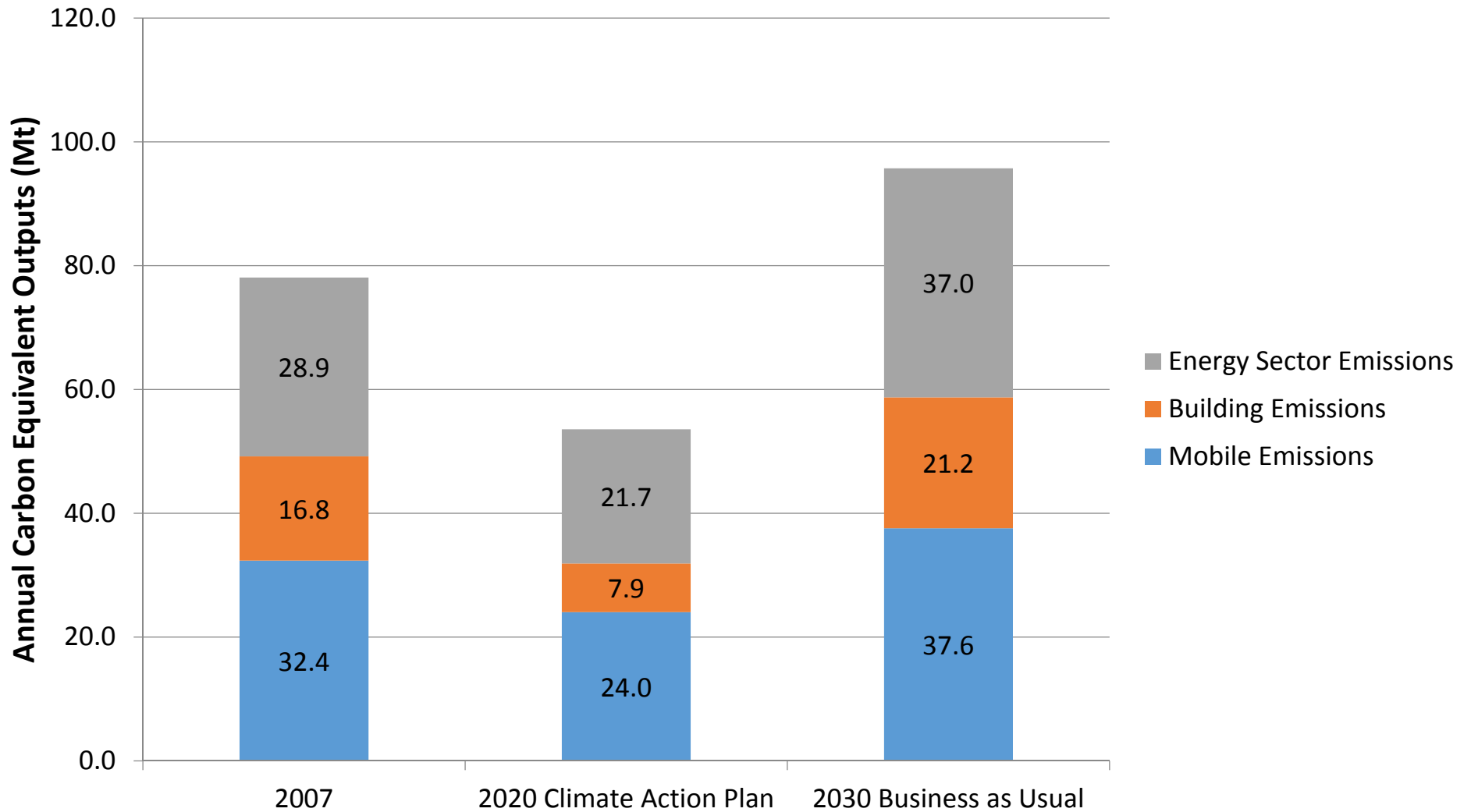


Results

Source: MS State Stat, BEM and MEM Models



# Reduction in From All Sectors Necessary to Approach GHG Targets



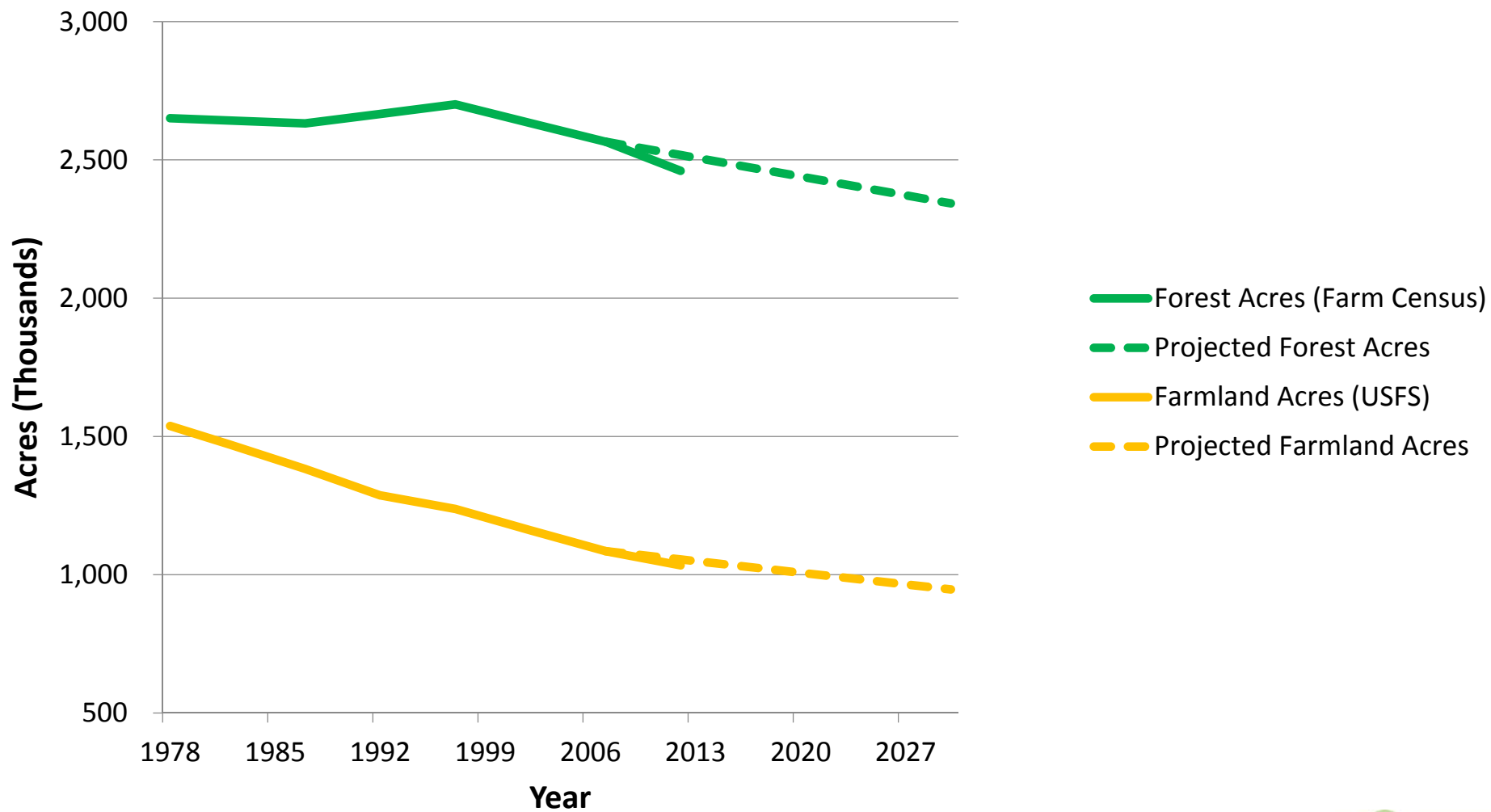
Results

Source: MD State Stat, BEM and MEM Models





# Forests and Farms Continue to Decline

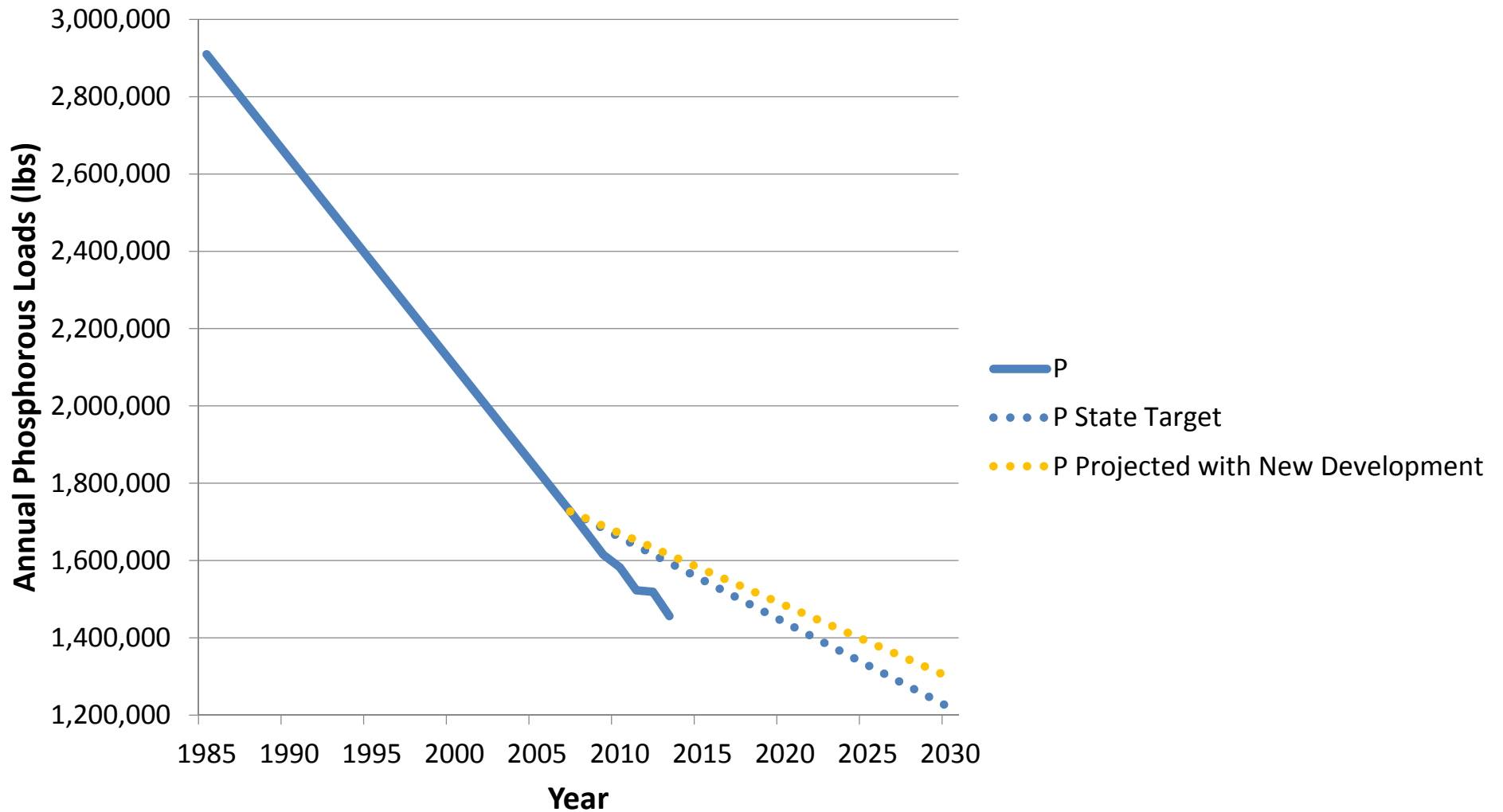


Results

Source: USFS, BEM and MEM Models



# Development Adds New Phosphorous Loads; Achieving Targets More Challenging



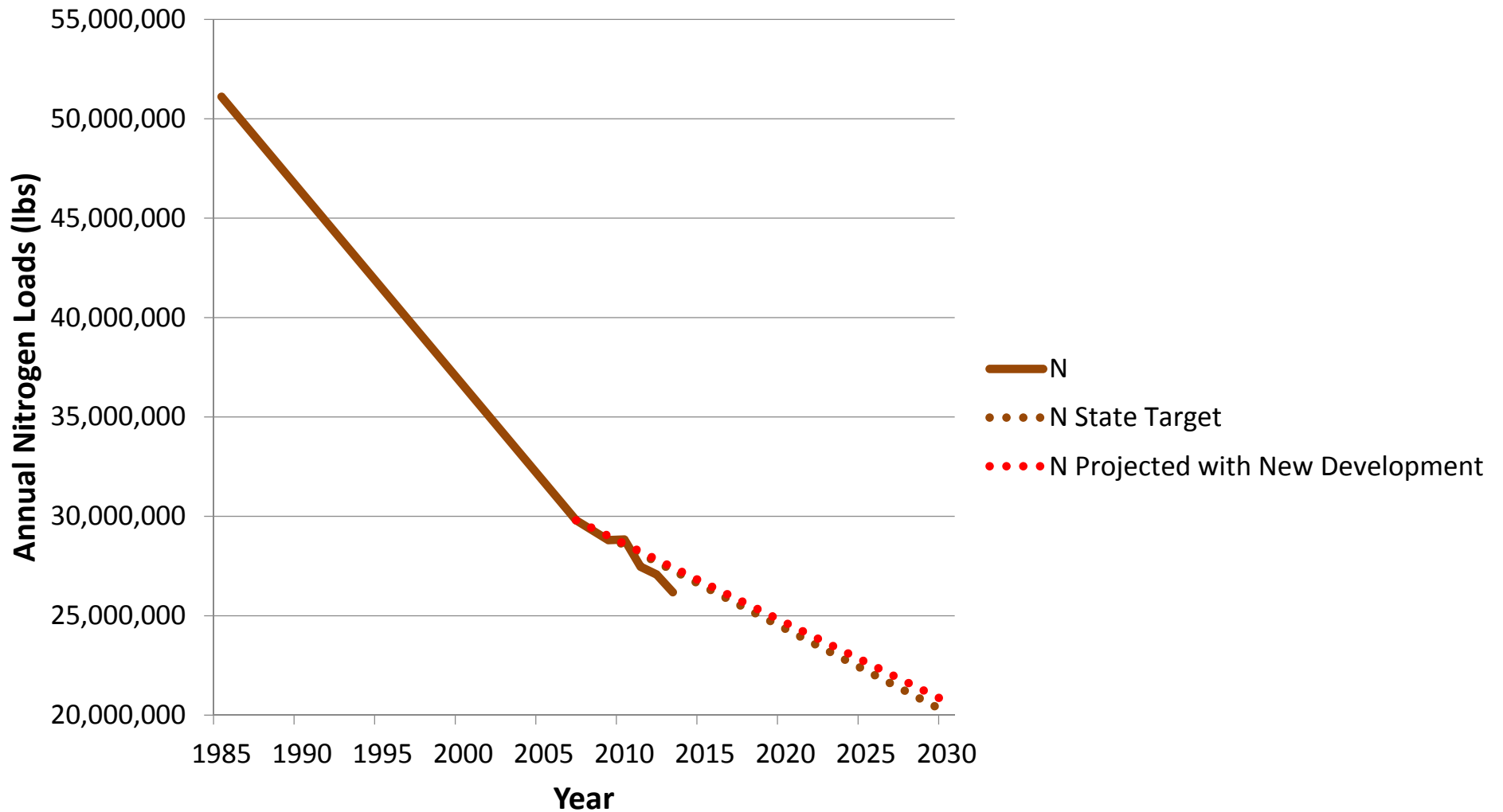
Results

Source: MD State Stat, Chesapeake Bay Land Cover Model





# New Development Less Impactful on Nitrogen Loads

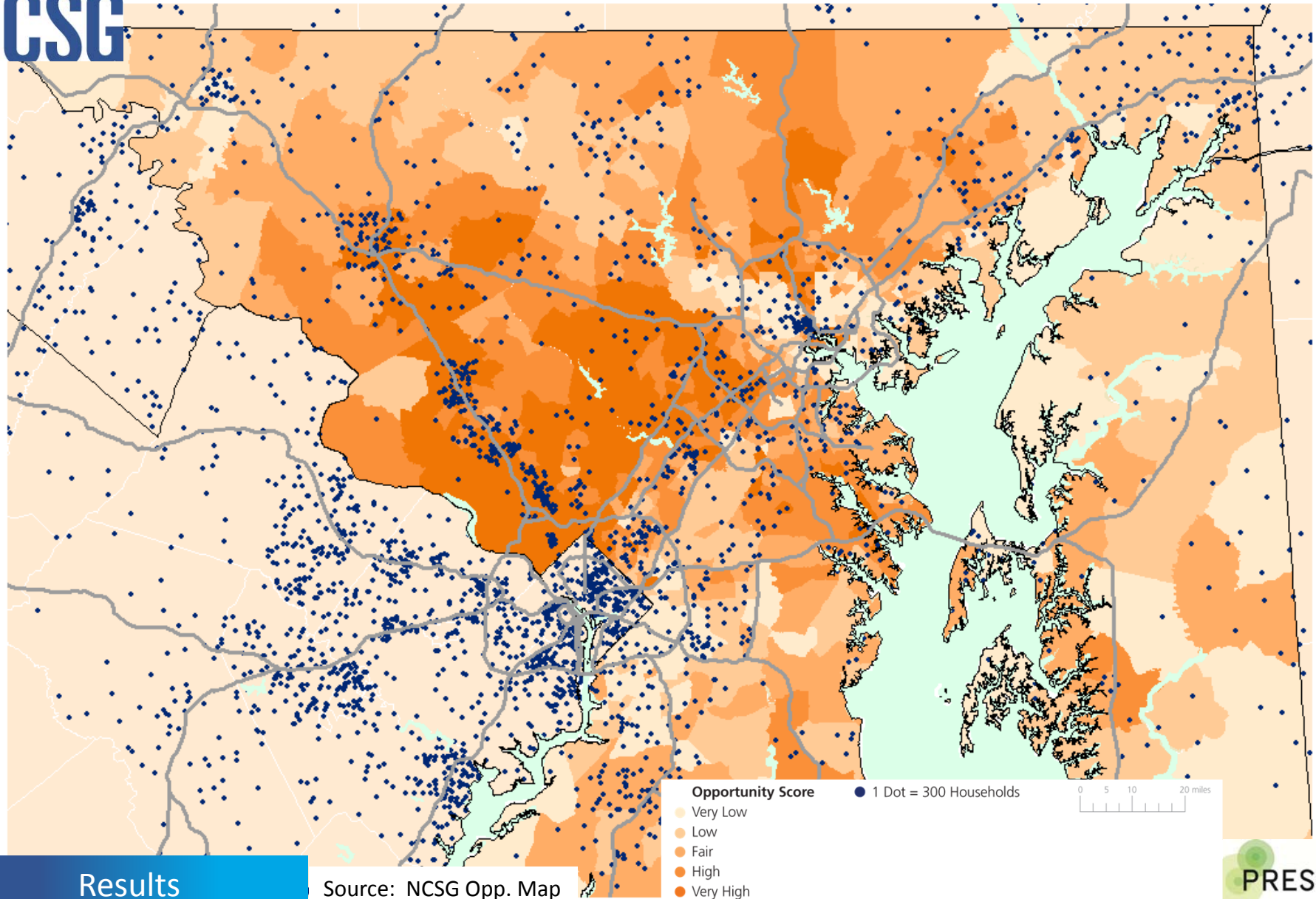


Results

Source: MD State Stat, Chesapeake Bay Land Cover Model



# New Families Move to All Levels of Opportunity



Results

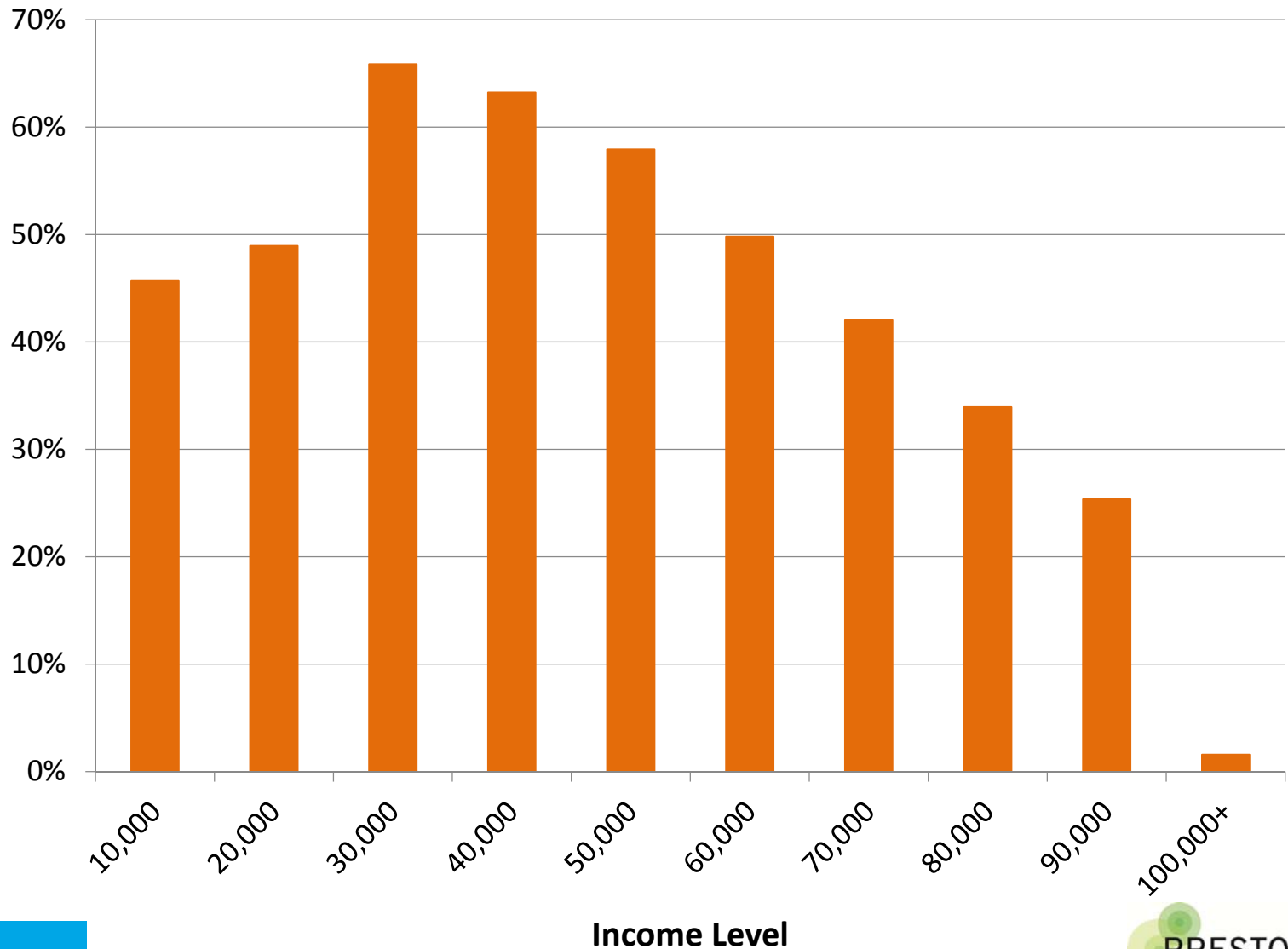
Source: NCSG Opp. Map

PRESTO!

# Middle Income Household Particularly Burdened



**Housing Cost  
Increase From 2007  
to 2030**



Results

Source: SILO Model



# Development Capacity Data Needed for Northern Virginia



- Dev. Cap. = analysis of how much development can be absorbed, based on current zoning/plans *at buildout* (NOT projections)
- Needed for
  - Fairfax Co
  - Loudoun Co
  - PW Co
  - Arlington Co (Redvpt?)
  - Alexandria (Redvpt?)



# PRESTO!

Plan for Regional  
Sustainability Tomorrow

Briefing to WashCOG

January , 2015

College Park, MD

