

# Briefing on the Round 8.0 Cooperative Forecasts

Cooperative Forecasting and Data Subcommittee

Gregory Goodwin  
COG Staff

November 10, 2009

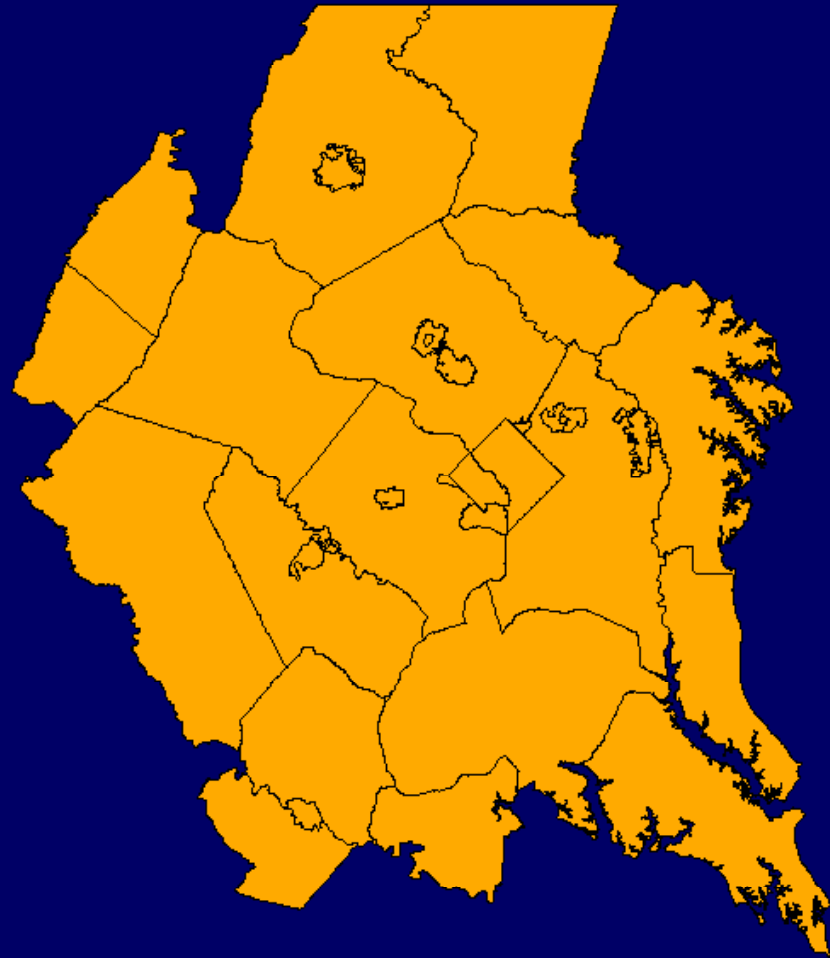
# Background

# The Round 8.0 Cooperative Forecasts . . .

- . . . will be used in conjunction with a new Household Travel Survey and a new Transportation Model
- . . . include a new econometric benchmark forecasts based on revised assumptions of the U.S. economy.
- . . . will include a new Traffic Analysis Zones (TAZs) structure (TPB TAZ 3,722) almost doubling the number of TAZs from the previous Round 7 series.
- . . . will be used in upcoming Air Quality Conformity Analysis through the 2040 forecast period.
- . . . will be the basis for the next schedule update to the COG Regional Activity Centers and Clusters.

# Forecasts for all jurisdictions in the TPB Modeled Area are included in Round 8.0.

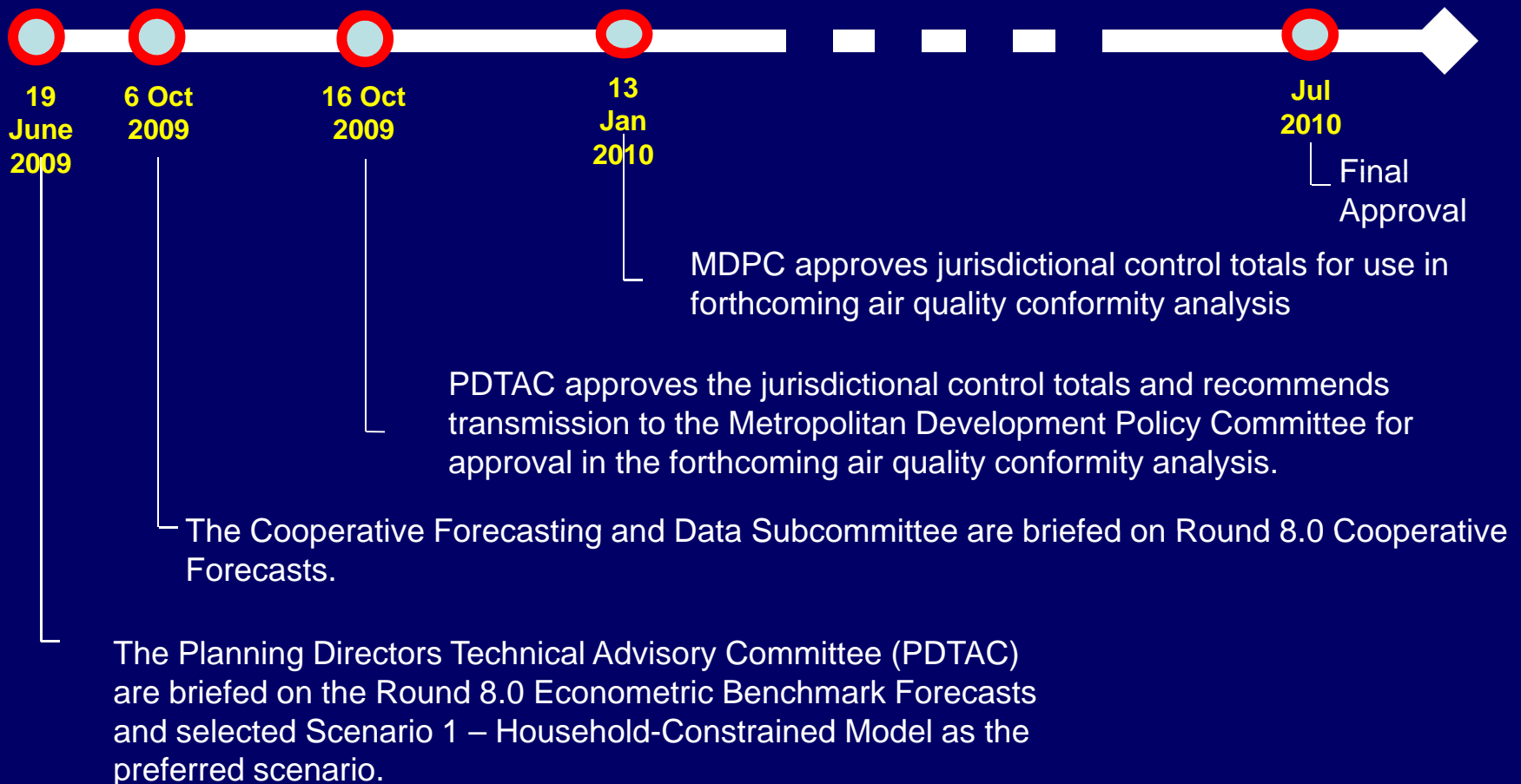
- **COG Members**
- **BMC Counties in TPB Modeled Area**
  - Anne Arundel, Carroll & Howard
- **Tri-County Council**
  - Calvert, Charles & St. Mary's
- **FAMPO**
  - Fredericksburg, King George, Spotsylvania & Stafford
- **Others**
  - Clarke, Fauquier & Jefferson



# Jurisdictions modeled by TPB are grouped geographically for analysis purposes.

Central Jurisdictions	Inner Suburbs	Outer Suburbs	Outer Ring
<ul style="list-style-type: none"><li>• District of Columbia</li><li>• Arlington</li><li>• Alexandria</li></ul>	<ul style="list-style-type: none"><li>• Montgomery</li><li>• Prince George's</li><li>• Fairfax (County)</li><li>• Fairfax (city)</li><li>• Falls Church</li></ul>	<ul style="list-style-type: none"><li>• Loudoun</li><li>• Prince William</li><li>• Manassas</li><li>• Manassas Park</li><li>• Calvert</li><li>• Charles</li><li>• Frederick County (MD)</li><li>• Stafford</li></ul>	<ul style="list-style-type: none"><li>• Anne Arundel</li><li>• Carroll</li><li>• Howard</li><li>• Fredericksburg</li><li>• King George</li><li>• Spotsylvania (portion)</li><li>• Clarke</li><li>• Fauquier</li><li>• Jefferson (WV)</li><li>• St. Mary's</li></ul>

# Round 8.0 approval timeline



# Key Findings

# Employment (jobs) Comparison Throughout Forecast Period

TPB Modeled Area

Persons (In Thousands)

	2005	2010	2015	2020	2025	2030	2035	2040
Round 7.2A	3,785.5	4,079.7	4,406.1	4,740.0	5,024.9	5,272.3	5,465.8	5,656.7
Round 8.0	3,786.1	4,043.0	4,348.1	4,676.5	4,960.5	5,201.0	5,414.4	5,603.7
Change (#)	0.6	-36.7	-58.0	-63.5	-64.4	-71.3	-51.4	-53.1
Percent Change (%)	0.0%	-0.9%	-1.3%	-1.3%	-1.3%	-1.4%	-0.9%	-0.9%



# Population Comparison Throughout Forecast Period

TPB Modeled Area

Persons (In Thousands)

	2005	2010	2015	2020	2025	2030	2035	2040
Round 7.2A	6,276.4	6,666.0	7,081.3	7,496.9	7,858.2	8,157.5	8,429.9	8,704.9
Round 8.0	6,262.7	6,625.7	7,012.9	7,396.8	7,754.7	8,068.4	8,344.2	8,598.6
Change (#)	-13.8	-40.1	-68.4	-100.1	-103.5	-89.1	-85.7	-106.3
Percent Change (%)	-0.2%	-0.6%	-1.0%	-1.3%	-1.3%	-1.1%	-1.0%	-1.2%

# Household Comparison Throughout Forecast Period

TPB Modeled Area

Persons (In Thousands)

	2005	2010	2015	2020	2025	2030	2035	2040
Round 7.2A	2,340.3	2,520.4	2,714.3	2,895.9	3,049.5	3,182.9	3,299.3	3,408.0
Round 8.0	2,334.6	2,491.3	2,672.7	2,842.3	3,000.1	3,136.9	3,256.1	3,362.8
Change (#)	-5.7	-29.1	-41.5	-53.6	-49.3	-46.0	-43.2	-45.2
Percent Change (%)	-0.2%	-1.2%	-1.5%	-1.9%	-1.6%	-1.4%	-1.3%	-1.3%

# Comparison with Round 8.0 Econometric Benchmark Forecasts

1983 Washington MSA – Scenario #1–Household-Constrained

REVISED 10/15/09

(In Thousands)

	2005	2010	2015	2020	2025	2030	2035	2040
Total Jobs	3,145.4	3,231.7	3,442.2	3,656.1	3,846.1	4,045.3	4,236.0	4,428.3
Total Pop	4,927.2	5,141.1	5,400.0	5,691.3	5,985.6	6,280.2	6,564.8	6,849.5
Total HHS	1,845.9	1,917.8	2,024.8	2,150.6	2,262.4	2,379.6	2,491.8	2,604.9

	2005	2010	2015	2020	2025	2030	2035	2040
Total Jobs	-88.1 -2.8%	10.8 0.3%	33.9 1.0%	80.8 2.2%	116.6 3.0%	108.8 2.7%	94.1 2.2%	68.9 1.6%
Total Pop	23.8 0.5%	85.1 1.7%	127.9 2.4%	139.7 2.5%	128.3 2.1%	72.0 1.1%	-11.1 -0.2%	-112.4 -1.6%
Total HHS	13.1 0.7%	52.7 2.7%	81.2 4.0%	86.8 4.0%	96.9 4.3%	84.3 3.5%	59.5 2.4%	25.5 1.0%

# Projected Jobs/Households Ratios Throughout Forecast Period

1983 Washington MSA and TPB Modeled Area

	2005	2010	2015	2020	2025	2030	2035	2040
1983 Washington MSA Region	1.64	1.65	1.65	1.67	1.68	1.69	1.70	1.71
TPB Modeled Area	1.62	1.62	1.63	1.65	1.65	1.66	1.66	1.67

# Next Steps . . .

- MDPC approves Round 8.0 forecast control totals for testing in FY2010 Air Quality Conformity Analysis
- COG staff will receive TAZ-level forecasts (October – Mid-January 2010) from jurisdictions
- TAZ-level Round 8.0 data provided to TPB staff for Air Quality Conformity Analysis (End of January – Beginning of February)
- Final COG Board approval of 8.0 made concurrently with TPB approval of Air Quality Conformity Assessment for the 2010 CLRP and FY2011-2016 TIP in July 2010.

Questions . . .