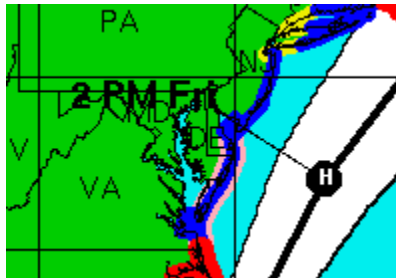


2010 Hurricane Season for the National Capital Region

National Weather Service - Baltimore/Washington Forecast Office

Chris Strong – Warning Coordination Meteorologist

- The 2010 hurricane season is forecast to be an active one for the Atlantic Ocean. That increases our odds for remnant storms (which make landfall elsewhere and carry over us), as well as the much rarer direct hit. That means we should all be ready for the 4 threats tropical systems bring. Each storm is a varying combination of these 4 threats:
 - Rain flooding – typically our biggest threat
 - Tidal flooding
 - Winds – mainly for storms that make landfall nearby with a path near the NCR
 - Tornadoes
- Ensure you know where to get your information, and who you will call to dispel misinformation.
- Hurricane Earl (Category 4) was our first major tropical threat of 2010.



- center about 100 miles east of our Atlantic coastline
 - battered the coast with waves & erosion, but largely a 'near miss' for our area
- 'Core' of hurricane season for our area is mid-August – mid-October.
- Likely more tropical events for the NCR this year. Be ready!

<http://www.weather.gov/washington>

Emergency Management webpage
<http://www.weather.gov/washington/em.php>

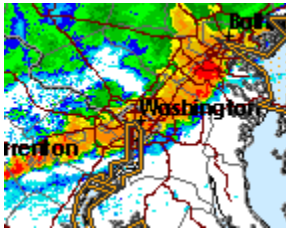
2010 Severe Thunderstorms for the National Capital Region

National Weather Service - Baltimore/Washington Forecast Office

Chris Strong – Warning Coordination Meteorologist

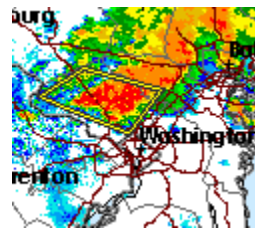
- 2010 has been a particularly damaging & deadly year for severe thunderstorms in the NCR. Three of these happened within a 2 week period:

- **July 25th** (north NCR)



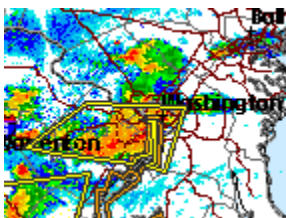
- Montgomery County/Northern Prince Georges/Northern DC
- Hundreds of trees down
- Four killed (2 tree, 2 lightning)
- Winds w/ start or ahead of rain

- **Aug 5th – AM** (north NCR)



- Rare early AM storm developed rapidly south from PA
- Microbursts in Gaithersburg and Silver Spring MD
- 80-90 mph winds down hundreds of trees
- Phenomenal amount of rain in short period of time (~ 2-4"/1.5 hour)
 - Large scale urban flash flooding
 - Rock Creek / Sligo Creek flash flooding
 - Rush Hour

- **Aug 5th** (south NCR)



- Microbursts in Alexandria VA and Oxon Hill MD
- 80-90 mph winds down scores of trees

- Peak for these types of storms has passed, but always a threat in our area!
- Severe Thunderstorms = Damaging Thunderstorms with strong gusty winds.
- Warnings = take cover.

<http://www.weather.gov/washington>

Emergency Management webpage
<http://www.weather.gov/washington/em.php>