

WMATA 2020 Platform Improvement Project

COG Commuter Connections Subcommittee
July 21, 2020



Project overview

- Making platforms at Metrorail stations safer & more accessible
- Utilizing extended shutdowns to improve safety and efficiency
- First phase completed in 2019; six stations successfully reconstructed on BL/YL south of National Airport station
- Using time to enhance customer experience (e.g. slip resistant tiles, LED lighting, large digital displays, new shelters)

BEFORE



AFTER



Regional Coordination Efforts



Rail service information

Effective: Saturday, May 23

- All stations west of Ballston-MU on the Orange and Silver lines are closed
- All trains begin and end service at Ballston-MU
- Orange Line service will run from Ballston-MU to New Carrollton
- There will be no Silver Line service



Effective: Sunday, June 28, 2020

Alternative travel options – free shuttles

OR **SV** Free Shuttle Service

Effective: Sunday, June 28, 2020

Orange Line Local

Service between **Vienna**, **Dunn Loring**, **West Falls Church** & **Ballston-MU**

Orange Line Express

Direct service between **Vienna** & **Ballston-MU**
(no intermediate stops)

East Falls Church–Ballston-MU Express

Direct service between **East Falls Church**
& **Ballston-MU**

Silver Line Local

Service between **Wiehle-Reston East**, **Spring Hill**,
Greensboro, **Tysons Corner**, **McLean** & **Ballston-MU**

ADA shuttles provided upon request
between impacted stations



Shuttle Hours & Frequencies

Weekdays

- 5 a.m. – 9 p.m.
- Approx. every 10 min.

Weekends

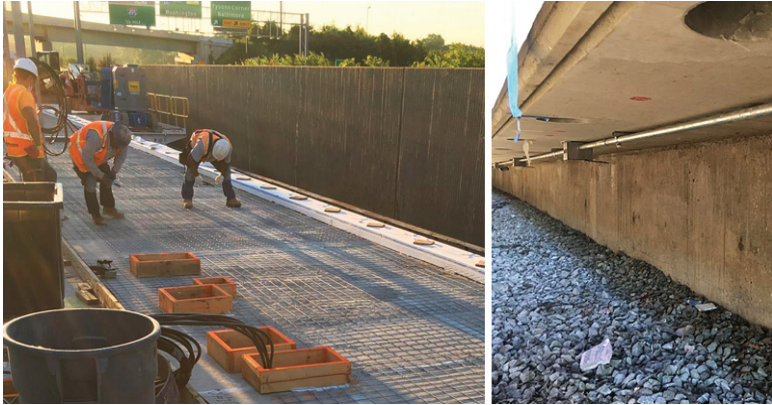
- 8 a.m. – 9 p.m.
- Approx. every 15 min.

On June 28, the Greensboro, McLean and East Falls Church stations received free shuttles

Silver Line and West Falls Church to Re-open on August 16

- On June 24, WMATA announced that the Silver Line will be restored on August 16
 - This includes the five Silver Line stations west of Ballston: McLean, Tysons Corner, Greensboro, Spring Hill, and Wiehle-Reston East
- WMATA also announced that the West Falls Church station on the Orange Line will re-open to customers on August 16
 - East Falls Church will remain closed to customers, with Silver and Orange Line trains passing through
- WMATA expects to re-open the remaining Orange Line stations (Vienna, Dunn Loring, East Falls Church) around Labor Day
- Work will begin on National Airport Station platform on August 8 and last through December 25; no significant impact to weekday service

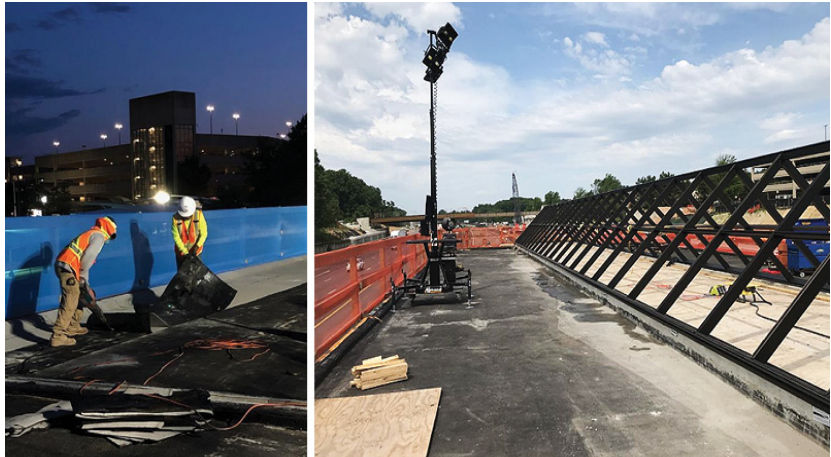
Construction Progress



Dunn Loring



East Falls Church



West Falls Church



Vienna

Thank You!

Continue checking wmata.com/platforms
for the most up to date information

