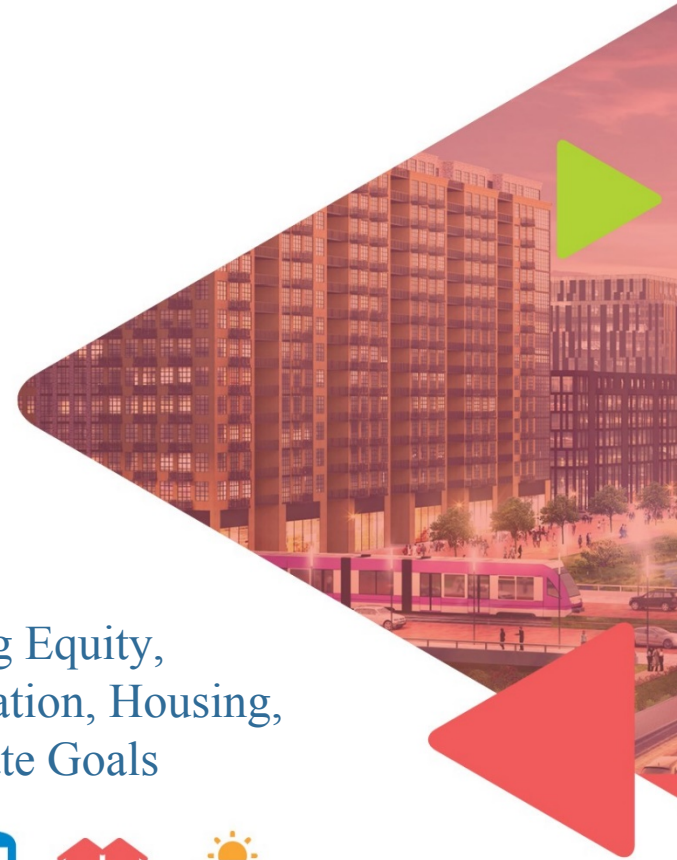


REGION UNITED

Metropolitan Washington Planning Framework for 2030

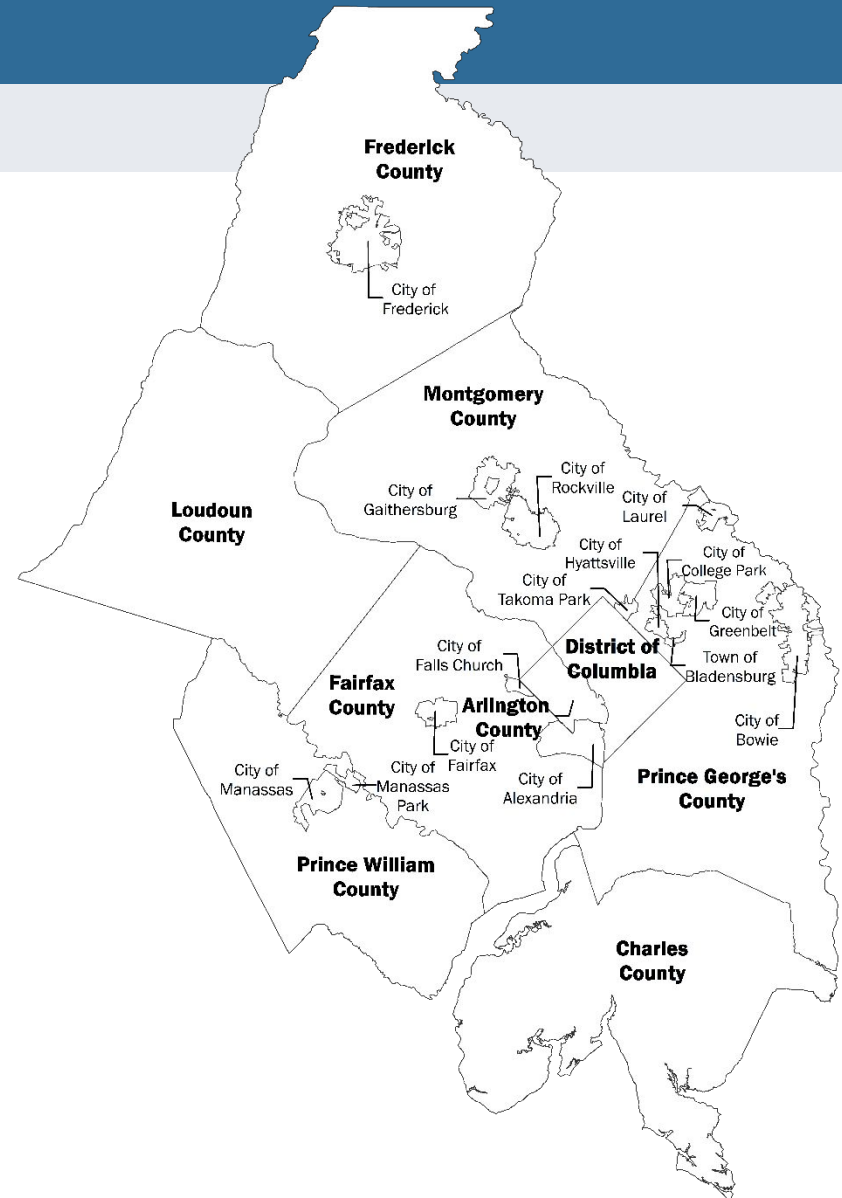


Advancing Equity,
Transportation, Housing,
and Climate Goals



About COG

- An independent, nonprofit association founded in 1957.
- Brings area leaders together to address regional issues.
- 300 elected officials from 24 local governments, the Maryland and Virginia state legislatures, and U.S. Congress.
- Home of the TPB, the region's Metropolitan Planning Organization.
- 125+ staff.



Region Forward Vision



COG Board Planning Priorities

“If the challenges are interrelated, so are the solutions.”

1. Housing Targets (2019)
2. Climate Goal & Action Plan (2020)
3. High-Capacity Transit Station Areas (2021)
4. Equity Emphasis Areas (2021)

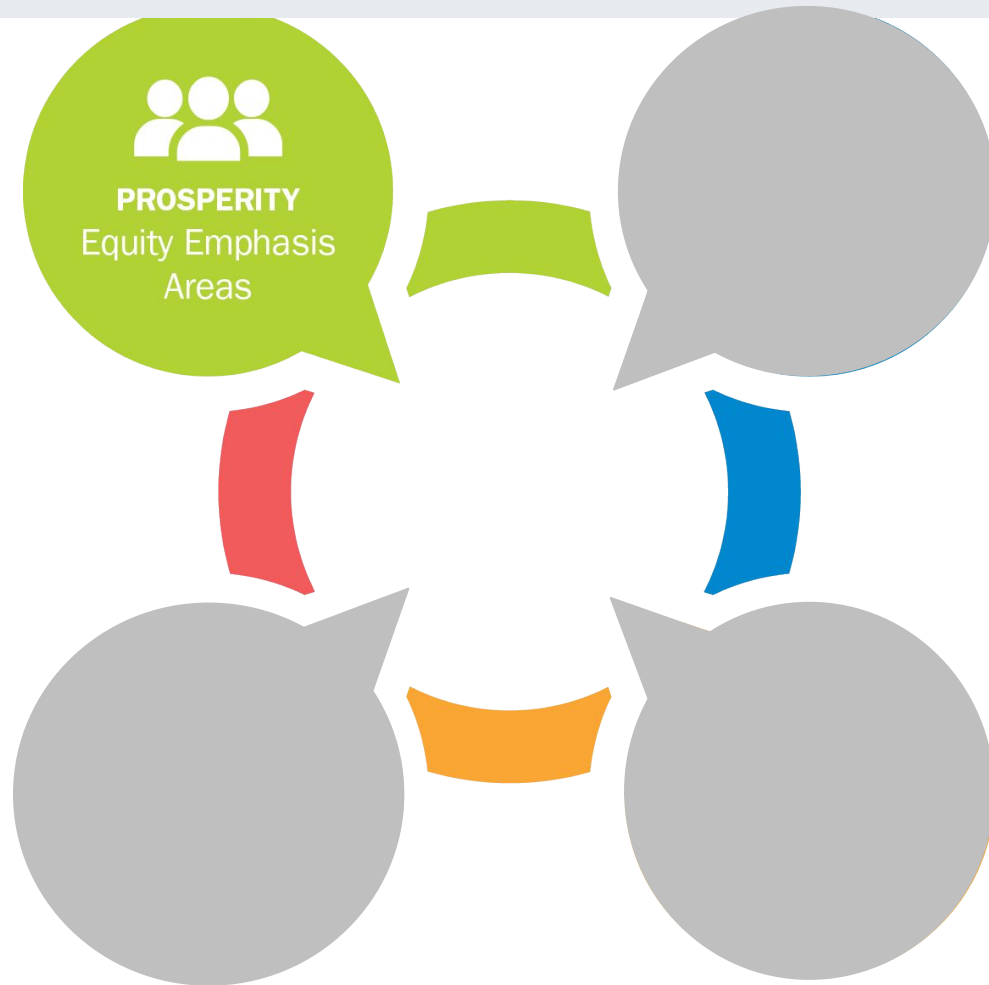


West Falls Church rendering (WMATA)

Framework for 2030



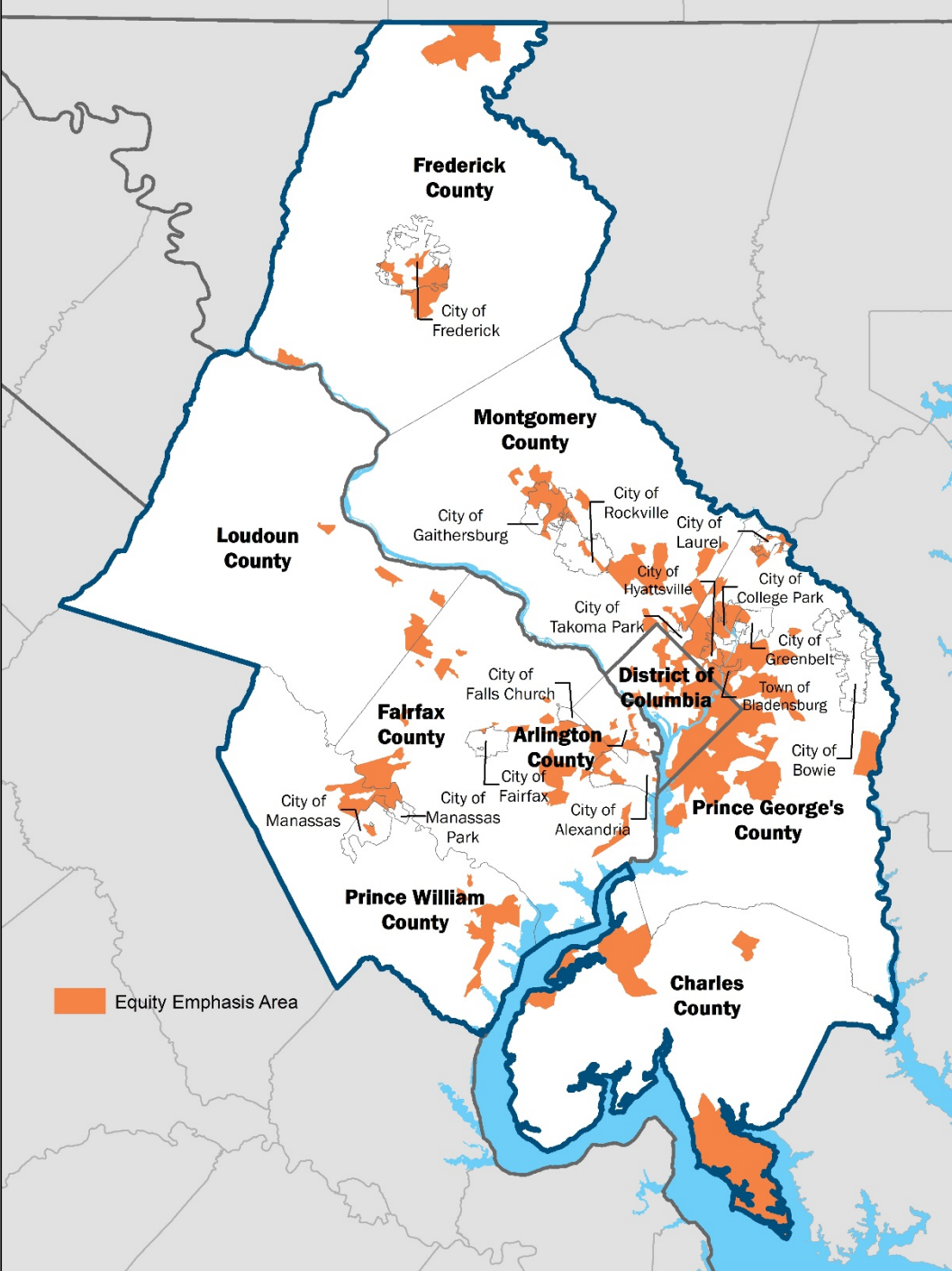
Advancing Shared Prosperity



Elevate 350 Equity Emphasis Areas (EEAs)

Areas with high concentrations
of underserved residents.

mwcog.org/equityemphasisareas



Equity Emphasis Area

EEAs Located Regionwide

- Nearly **30 percent** of the region's population resides within EEAs.

Equity Emphasis Areas per Jurisdiction

TPB Planning Area Jurisdiction	Number of EEAs	Total Population		Population within EEAs	
		#	%	#	%
District of Columbia	97	692,625	12.4%	373,236	24.0%
Charles County	5	159,428	2.9%	17,979	1.2%
Frederick County	9	251,422	4.5%	40,271	2.6%
Montgomery County	49	1,043,530	18.7%	259,093	16.6%
Prince George's County	103	908,670	16.3%	413,340	26.5%
Maryland Subtotal	166	2,363,050	42.3%	730,683	46.9%
City of Alexandria	9	157,613	2.8%	45,274	2.9%
Arlington County	12	233,460	4.2%	47,013	3.0%
Fairfax County	43	1,145,857	20.5%	215,246	13.8%
City of Fairfax	0	23,531	0.4%	0	0.0%
City of Falls Church	0	14,128	0.3%	0	0.0%
Loudoun County	5	395,134	7.1%	27,437	1.8%
City of Manassas	1	41,174	0.7%	7,609	0.5%
City of Manassas Park	1	16,986	0.3%	7,291	0.5%
Prince William County	17	467,886	8.4%	103,940	6.7%
Fauquier Co. UZA portion	0	35,928	0.6%	0	0.0%
Virginia Subtotal	88	2,531,697	45.3%	453,810	29.1%
Total	351	5,587,372	100.0%	1,557,729	100.0%



Cross-cutting: Broader EEAs Application

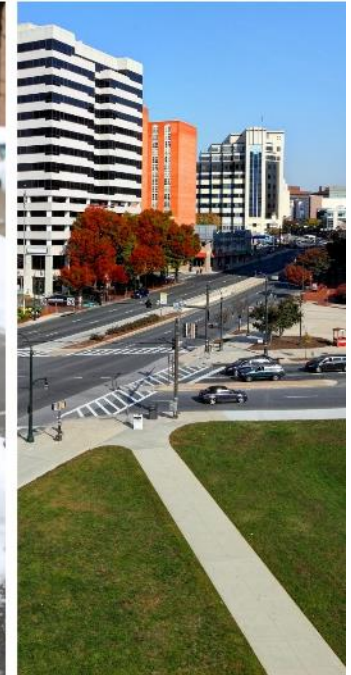
- EEAs to be used broadly in local/regional planning activities:
 - Climate and Energy
 - Housing
 - Community Planning
 - Health
 - Public Safety
 - Transportation
 - Education
 - Economic Opportunities



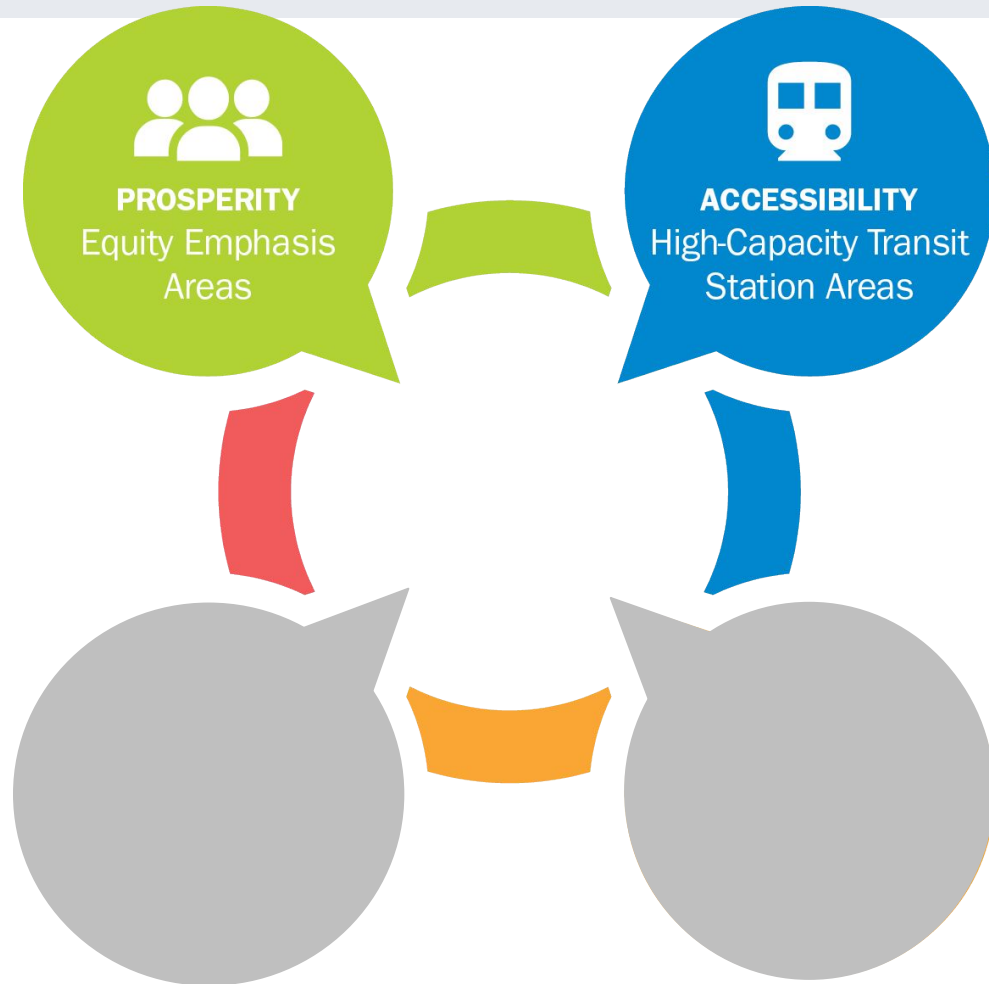
Virginia Commonwealth University: Health Equity Brief for COG

EEAs/Montgomery County

- Montgomery County application of EEAs
 - Council endorsement as planning concept
 - Capital Improvement Program (CIP) budget – prioritizes projects
 - Green Bank
 - Shovel Our Sidewalks Act
 - Transit access planning (Purple Line)



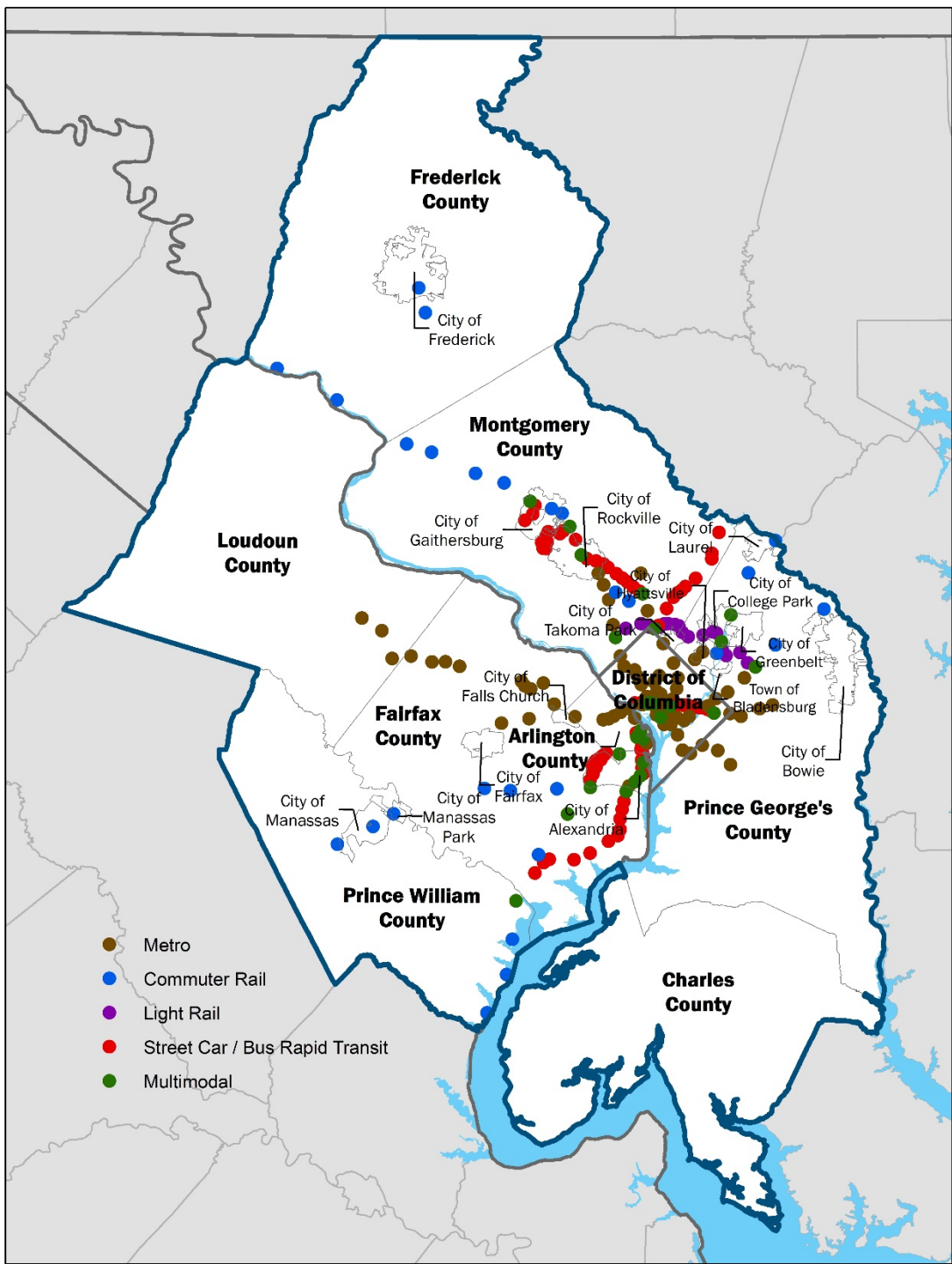
Advancing Accessibility



Optimize 225 High-Capacity Transit Station Areas (HCTs)

Locations around Metrorail, Commuter Rail, Light Rail, Bus Rapid Transit (BRT), and Streetcar.

mwcog.org/highcapacitytransit



HCTs by Jurisdiction/Mode

JURISDICTION	Total	Commuter Rail	Light Rail	Metro Rail	Multi System	Streetcar / BRT
City of Alexandria	21			1	4	16
Arlington County	19			8	3	8
City of College Park	5		3		2	
District of Columbia	55			34	6	15
Fairfax County	29	4		11	3	11
Frederick County	3	3				
City of Frederick	1	1				
City of Gaithersburg	6	1			1	4
City of Greenbelt	1				1	
City of Laurel	1	1				
Loudoun County	3				3	
City of Manassas	1	1				
City of Manassas Park	1	1				
Montgomery County	46	7	8	5	4	22
Prince George's County	23	4	6	12	1	
Prince William County	5	4			1	
City of Rockville	7	1			1	5
City of Takoma Park	1		1			
Regional Total	225*	27*	17*	75*	26*	80*

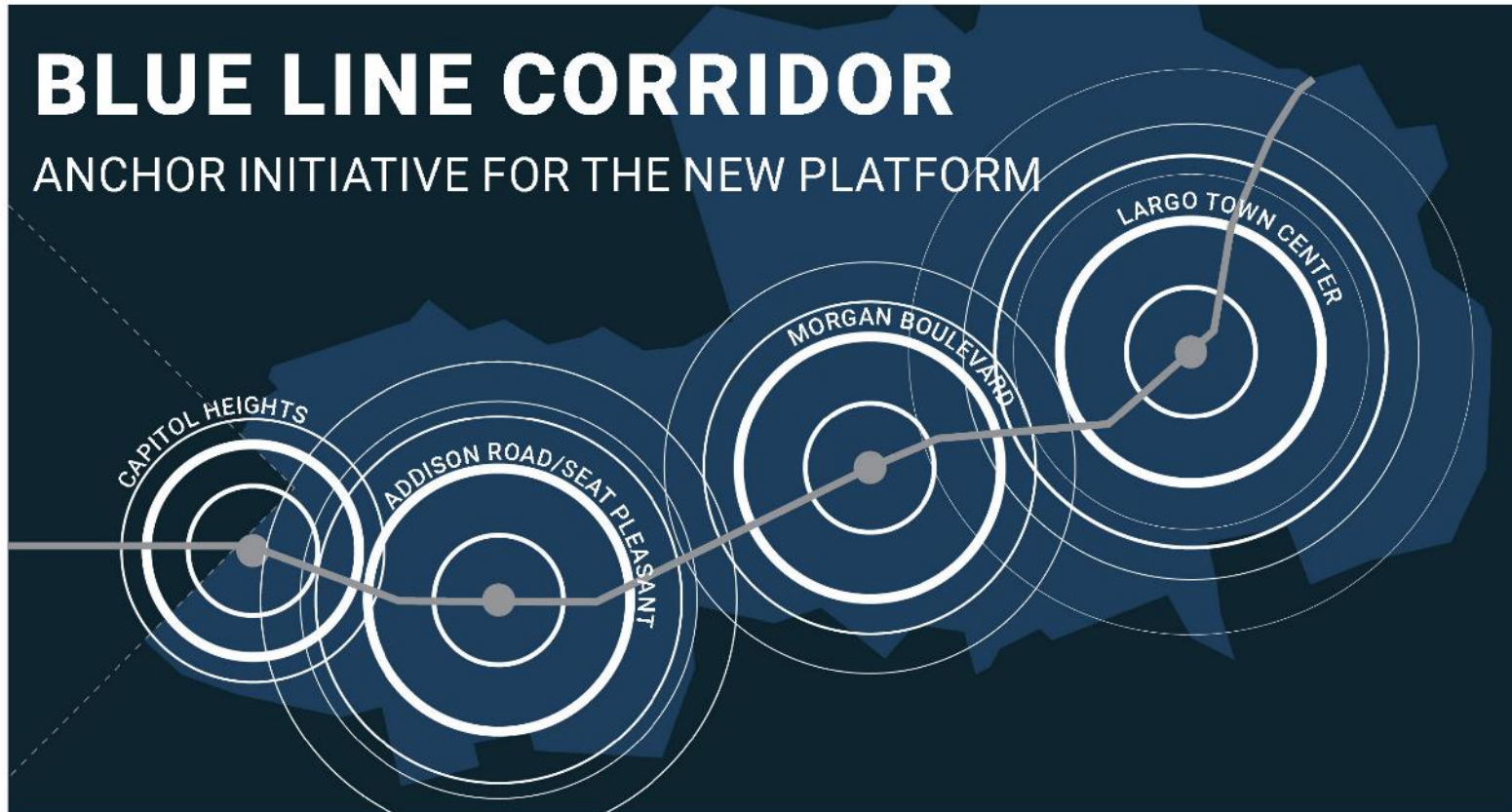
* The Greenbelt, Takoma/Langley Transit Center and Van Dorn HCTs are located on jurisdictional boundaries. The Greenbelt HCT is in the cities of Greenbelt and College Park, Takoma/Langley Transit Center HCT is in the City of Takoma Park and Prince George's County and Van Dorn Street HCT is in the City of Alexandria and Fairfax County. These stations appear in their respective jurisdictional totals but are not double counted in the regional totals. (Updated January 3, 2022)

Optimize HCTs = Transit-Oriented Communities

- Enhance land use around stations:
 - Housing, offices, and shopping.
- Improve access to stations and nearby amenities:
 - Pedestrian and bicycle projects.
 - Bikeshare, e-scooter.
 - Microtransit services.



HCTs/Prince George's County



Blue Line Corridor (Prince George's County)



Advancing Livability



The Region Still Needs More Housing

Total Housing Units Authorized by Building Permits
by Year In Metropolitan Washington



Regional Housing Targets

Amount

At least 320,000 housing units should be added in the region between 2020 and 2030. This is an additional 75,000 units beyond the units already forecast for this period.

TARGET 1

Accessibility

At least 75% of all new housing should be in Activity Centers or near high-capacity transit.

TARGET 2

Affordability

At least 75% of new housing should be affordable to low- and middle-income households.

TARGET 3



Housing Targets/D.C. & Alexandria

- District of Columbia
 - Mayor's Order on housing – 36K new units by 2025
- City of Alexandria
 - Adoption of regional share of housing targets - 11,500 new units by 2030



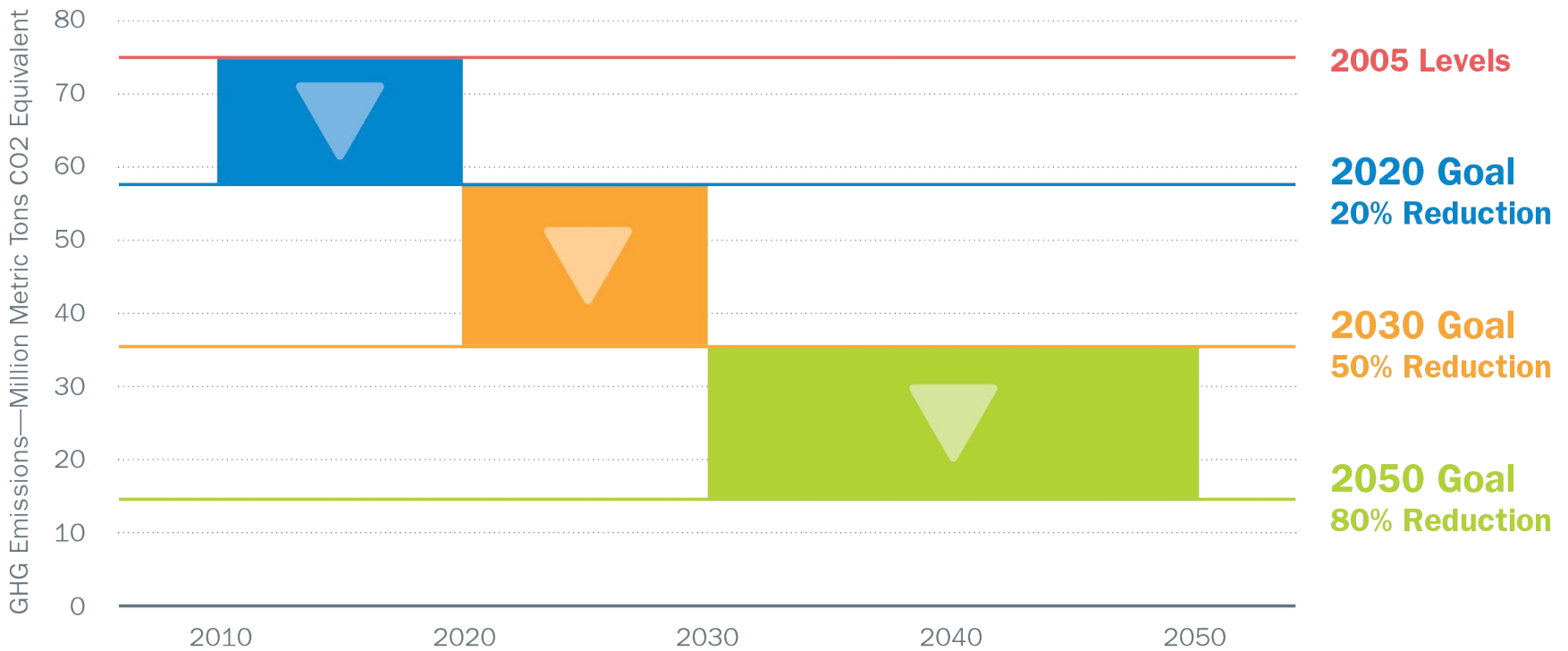
The Residences at St. Elizabeths East (Flaherty & Collins Properties)

Advancing Sustainability

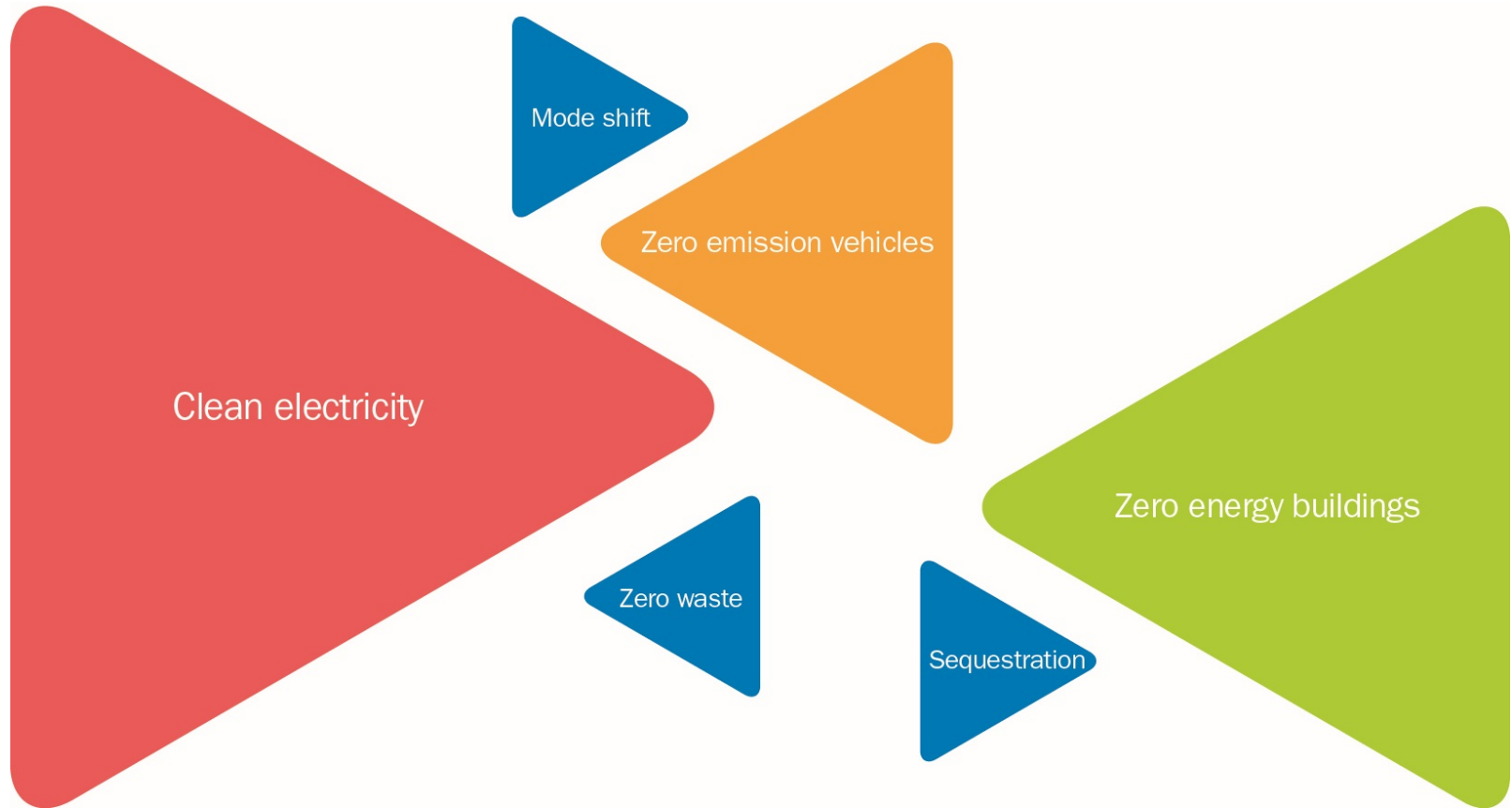


Regional Climate Goals

Metropolitan Washington GHG Emissions Reduction Goals

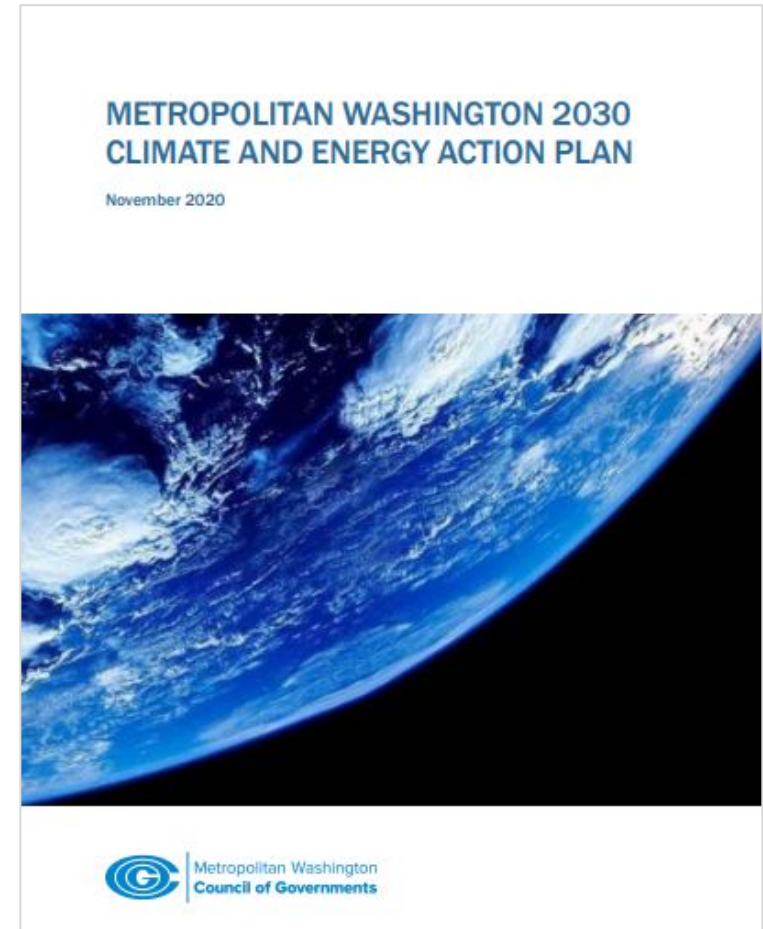


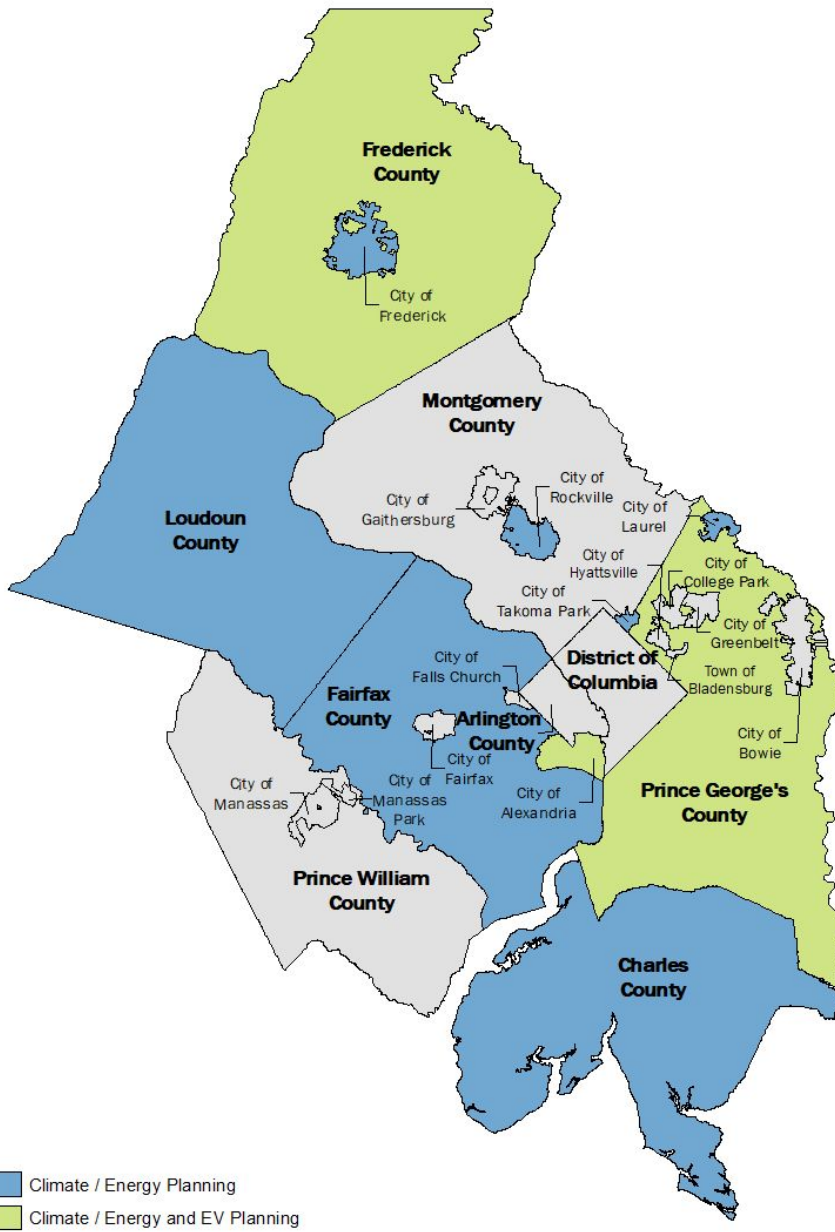
What Would It Take to Meet the 2030 Goal?



Cross-cutting: Climate, Equity, Transit, and Housing

- *2030 Climate and Energy Action Plan* identified equity-focused actions the region must take in pursuit of its climate goals.
 - Prioritizing sustainable energy access for all residents.
 - Increased transit use and fewer solo drivers.
 - More housing options that use less energy.





Local Climate & Energy Technical Assistance

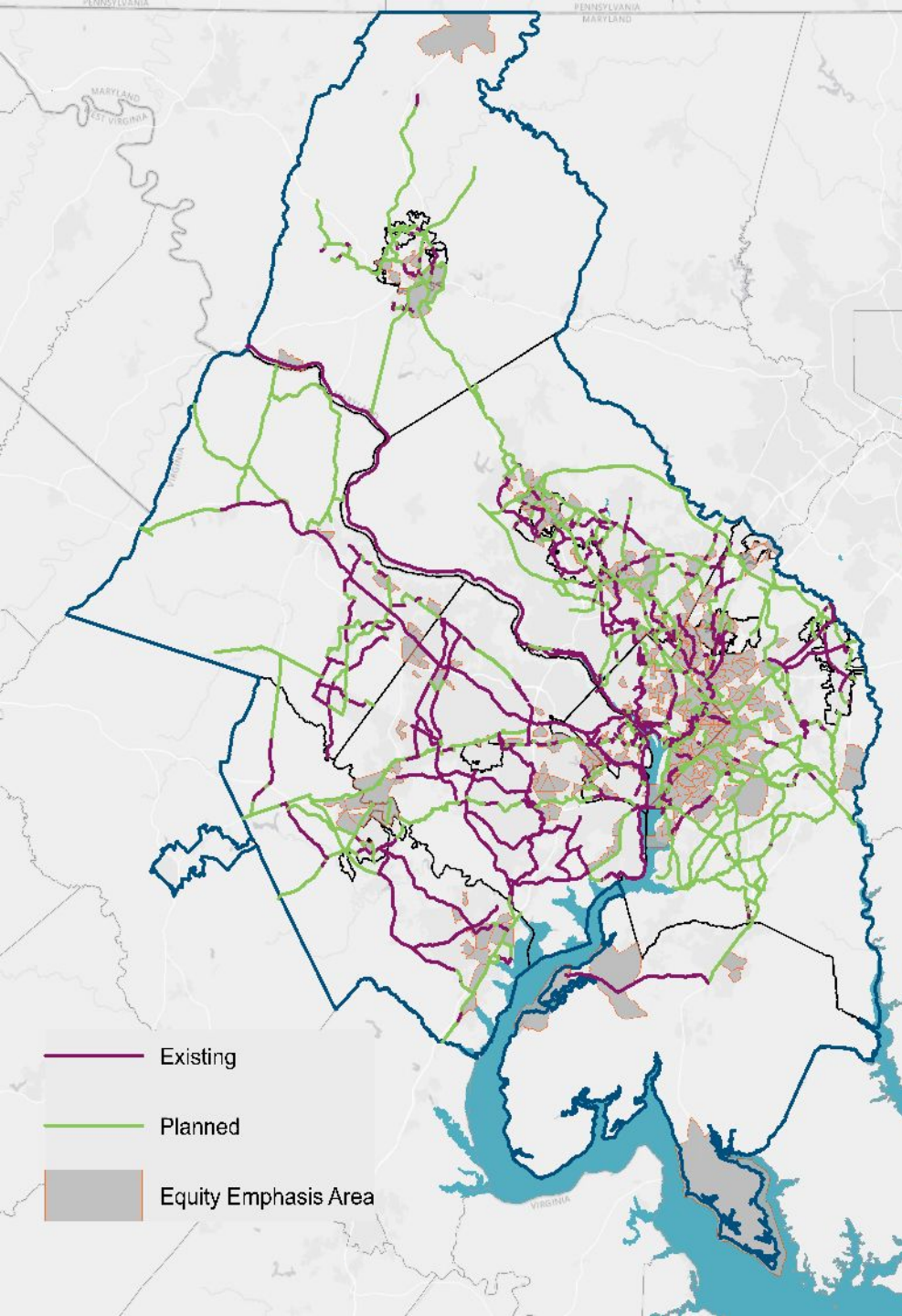
COG is supporting local climate and energy action plans and electric vehicle (EV) fleet policies and plans.

Accelerating Action

- Targeted Grants/Technical Assistance
 - Housing Affordability Planning Program; Transit Within Reach; Transportation Land-Use Connections (TLC) Program.
 - Climate/energy planning; Zero emission vehicles coordination.
- Forward-focused Strategies
 - Climate and Energy Action Plan; Housing Equity Plan; Visualize 2045 Aspirational Initiatives.
- Maps/Tools/Professional Development
 - Maps and data; Housing Messaging Playbook; Climate Partners website; Racial equity professional development.

National Capital Trail Network (NCTN)

- Long-distance, off-street trails accessible for people of all ages and abilities and suitable for both transportation and recreation.
- 180 of 225 HCTs are within half a mile.
- 55% of the network is unbuilt.



Bipartisan Infrastructure Bill

- Region to receive about \$20B/5 years.
 - \$3B (DC), \$7.6B (MD) and \$9.7B (VA)
- Additional \$30B available - competitive grant programs that our members individually, or collectively thru COG/TPB, can pursue.
- Alignment with COG framework - climate and equity goals.



VRE at Potomac River (Leandro Neumann Ciuffo/Wikimedia Commons)



Chuck Bean

COG Executive Director
(202) 962-3260
cbean@mwcog.org

777 North Capitol Street NE, Suite 300
Washington, DC 20002

mwcog.org/2030 framework



Metropolitan Washington
Council of Governments