



Freight Around the Region

TPB Freight Subcommittee

Karin Foster

Freight Transportation Planner

Metropolitan Washington Council of Governments

April 11, 2013

Overview

- What is “Freight”?
- Regional Freight Mode Split 2011
- Freight in the National Capital Region
- TPB Freight Program
- Inspiration for the Freight Around the Region project
- TPB Freight Around the Region Overview
- TPB Freight Around the Region Tasks
- TPB Freight Around the Region Timeline
- How can we use the “Freight Story”?
- Trending Freight Topics



What is “Freight”

What is Freight?

- Freight Definition
 - “Goods and cargo transported for pay, whether by water, land, or air.”

(Source: Cambridge Dictionary)

What Drives Freight?

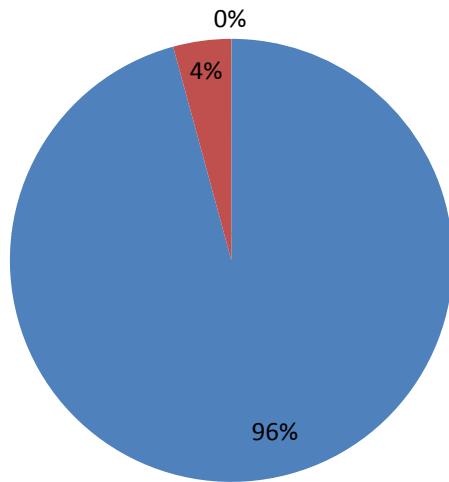
- Demand from People and Businesses drives Freight
- U.S. consumption requires the movement of 50 tons of freight per person each year!

Example: 777 North Capital Street receives 15 trucks per day

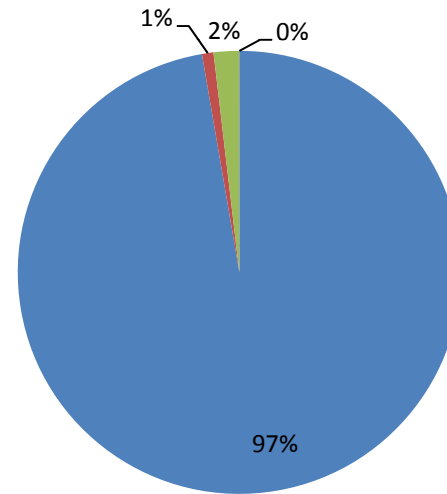
Regional Freight Mode Split 2011

Trips To, From, Within Region

Total KTONs in 2011

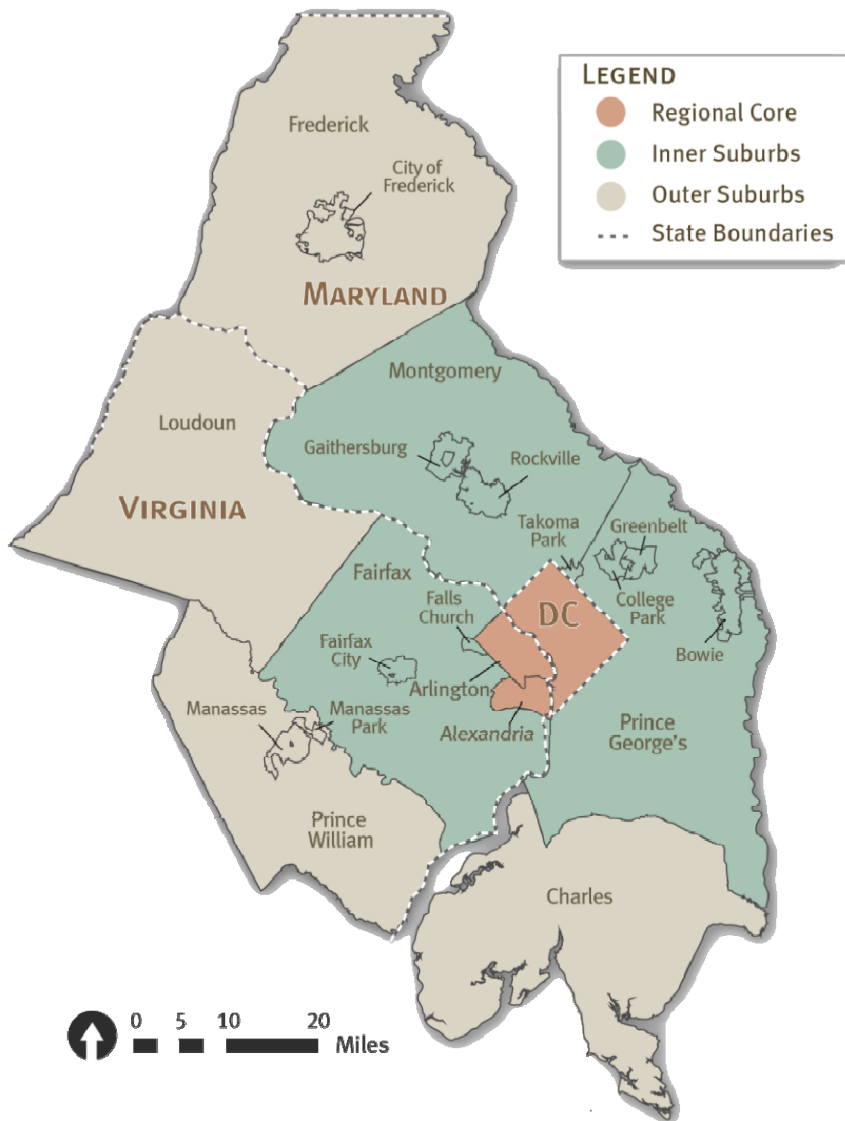


Total M\$ in 2011



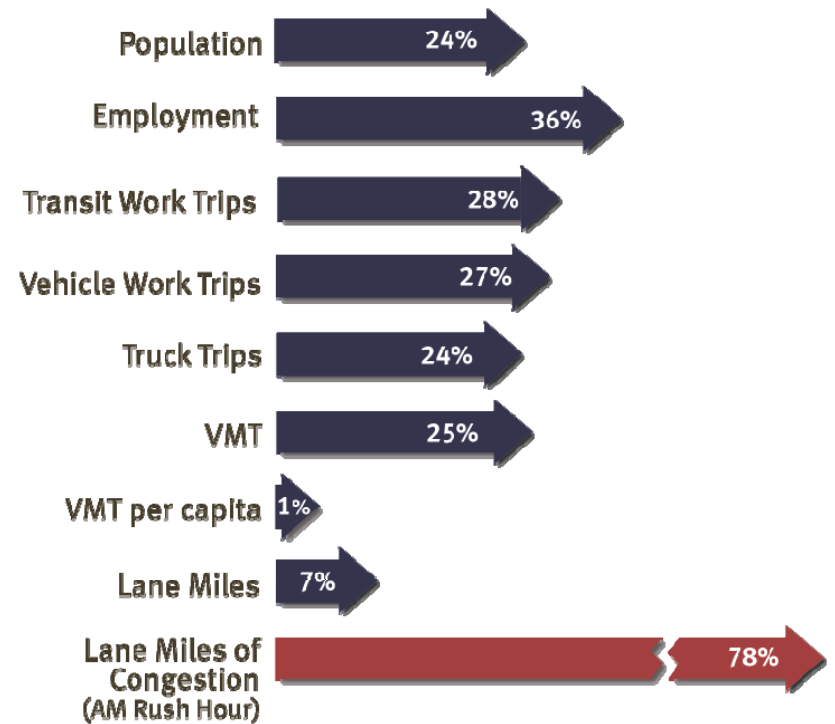
Source: FHWA Freight Analysis Framework, 2013

Freight in the National Capital Region



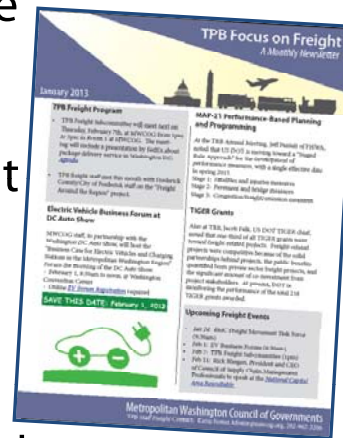
Our Region's Unique Freight Story

Change in Land Use and Travel Forecast 2013-2040



TPB Freight Program

- TPB Freight Program Components
 - TPB Freight Subcommittee
 - National Capital Region Freight Plan, 2010
 - Top 10 Highlighted Freight Projects, 2011
 - *Focus on Freight* Monthly Newsletter
 - www.mwcog.org/freight
 - Content to the Constrained Long-Range Plan/Transportation Improvement Program/TPB Publications
 - TPB Freight Around the Region project, underway



- TPB Freight Program Products
 - TPB Washington-Baltimore Air Cargo Study, 2008
 - Integrate Freight Report, 2009
 - TPB Freight Project Database, 2010
 - National Capital Region Freight Plan, 2010
 - Top 10 Highlighted Freight Projects, 2011
 - National Capital Region Freight Forum, 2011



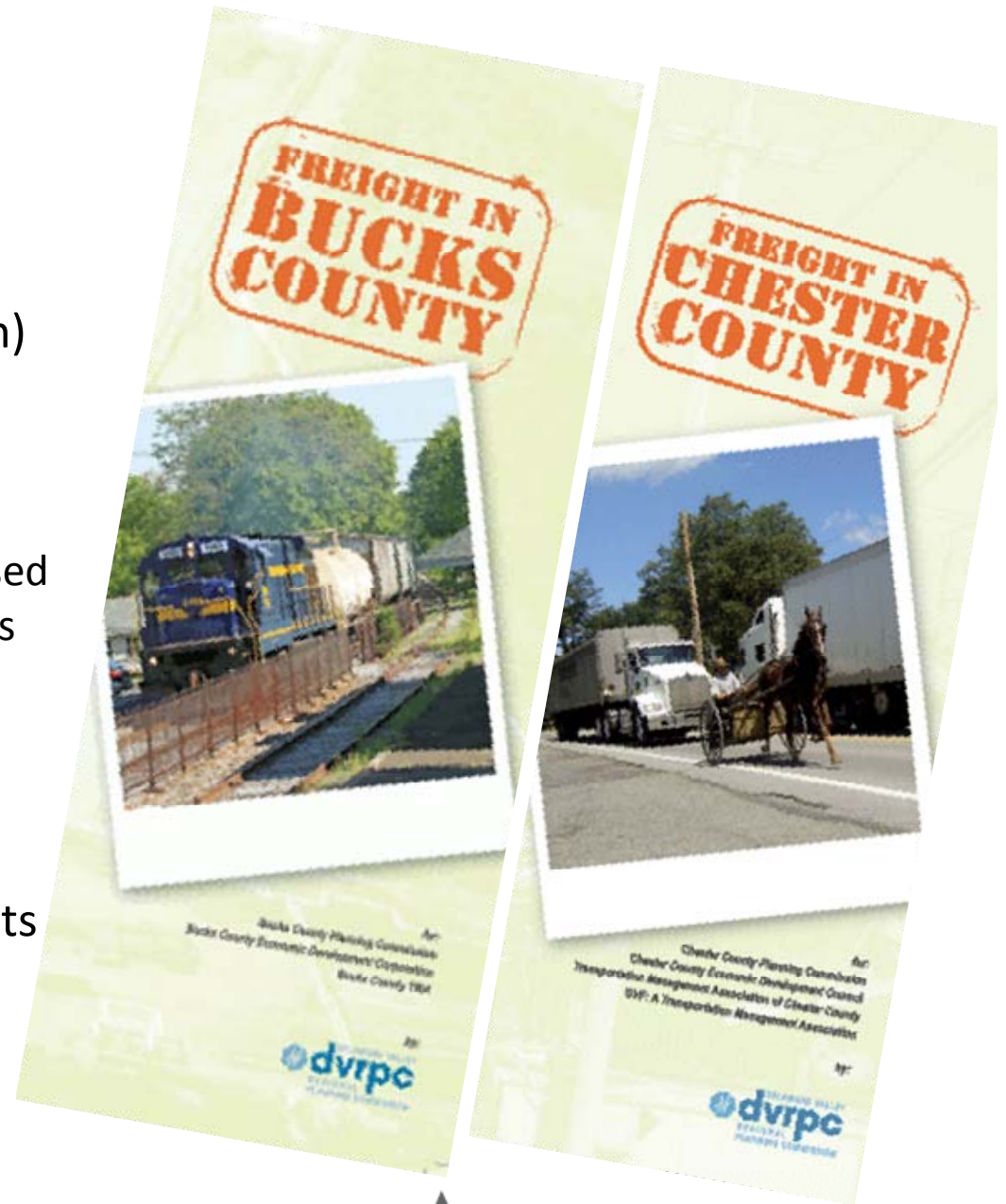
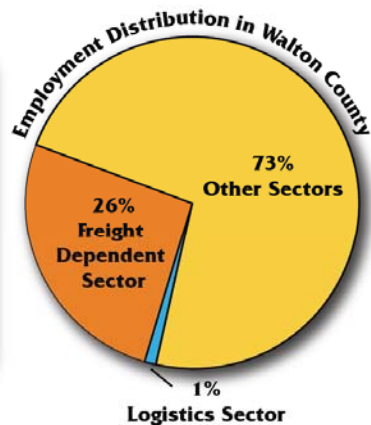
TPB Freight Program Cont.

- TPB Freight Subcommittee Role
 - Brief stakeholders on regional/national freight topics
 - TPB Freight Program products vetted by TPB Freight Subcommittee members
 - Inform/involve members about complementary MPO programs/policy
 - Complete Streets Policy input
 - Transportation Land-Use Connections Grant Program (Frederick County Freight and Land-Use Plan, 2011)
 - Electric Vehicle Business Forum participation
- Members approach TPB via Freight Subcommittee for Letters of Support
 - CSX TIGER Grant
 - NS TIGER Grant
 - DDOT Off-Hours FHWA Grant



Inspiration...

- DVRPC (Philadelphia region)
 - The primary purpose of the County Freight Scans was to equip the staffs of county planning agencies with increased understanding of freight trends and with greater capacity to address freight issues.
- ARC (Atlanta region)
 - County Economic Fact Sheets



TPB Freight Around the Region

Overview

- Reveal the unique freight story of each of our jurisdictions
 - Identify traditional freight assets...Who are the major generators/attractors?
 - How many jobs are in the goods movement transportation and freight-dependent sectors?
 - How much contribution does this sector make to our local economies?
 - Freight community contributions?



TPB Freight Around the Region

Tasks

- TPB staff visit each jurisdiction planners, economic development, airport representatives
- Share collected information, discuss freight issues, community contribution examples
 - Frederick County/City of Frederick
 - District of Columbia
 - Fairfax County/City of Fairfax/Falls Church

Products

- County Freight Story profiles summer 2013
- Freight Around the Region Summary Report, fall 2013

2012-2013 Freight Scan Database
Roadways
Roadway Vehicle Data
Roadway Rest Stops/Weigh Stations
Safety Data
Railroad
Airports
Maritime
Intermodal Terminals (truck, marine, air, rail, pipeline)
Jurisdiction Freight Topics/Issues
Land Use
Demographics
Freight Community Contributions/Freight Stories
County Contacts (name, department, %time, contact info)



TPB Freight Around the Region

Timeline

Freight Around the Region Project: Proposed Jurisdiction Meeting Schedule	
1/24/13	Frederick
2/4/13	DC
3/21/13	Fairfax/City of Fairfax/City of Falls Church
April date TBD	Prince George's
13-Apr	Charles
13-Apr	Loudoun
13-May	Montgomery
13-May	Alexandria/Arlington
13-Jun	Prince William/City of Manassas/Manassas Park



How can we use the “Freight Story”?

- Jurisdictions
 - Freight Education Resource/Economic Development-PR Resource
 - County “Freight Story” is a resource to support member agencies to explain the role of goods movement and freight-dependent sectors of the economy
 - Attract new businesses
 - Example: DVRPC “Freight Scan” reprinted in NJ State Economic Newsletter, other county/state publications
 - Example: DVRPC “Freight Scan” shared among businesses with businesses partners in other parts of the country to encourage them to locate in the Philadelphia region
- Metropolitan Planning
 - TPB will better understand how freight specifically contributes to the local economies of this region
 - Identify new freight issues important to TPB members



Thank You Questions?

Karin Foster
Freight Transportation Planner
Metropolitan Washington Council of Governments
National Capital Region Transportation Planning Board

kfoster@mwkog.org
www.mwkog.org/freight

