

Briefing on the

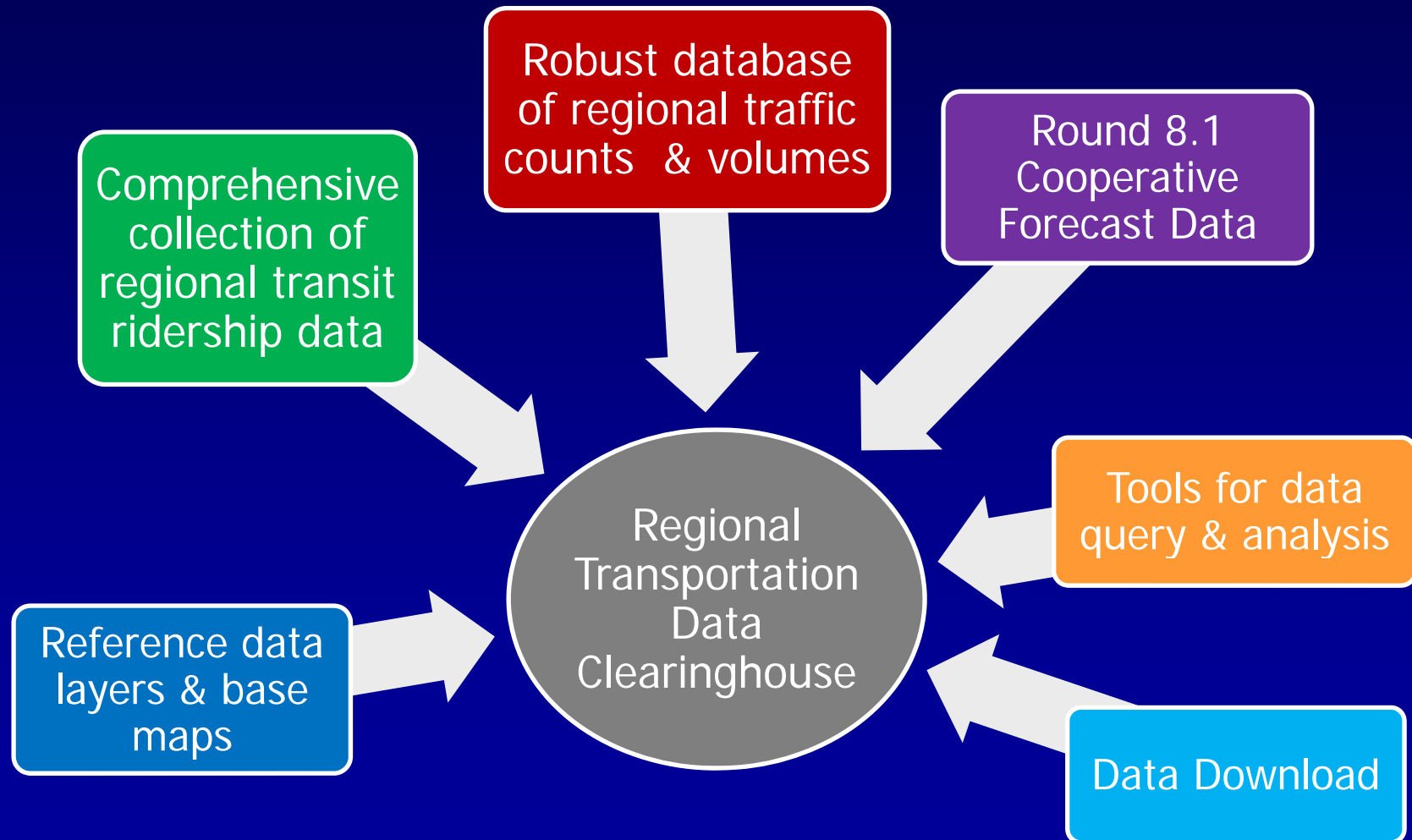
**Regional Transportation Data
Clearinghouse**

Charlene Howard
TPB Staff

TPB Technical Committee
11 January 2013

What is the RTDC?

A web-based transportation data viewer



The RTDC at a glance

Query layers & display related data tables

Perform queries & export results

Slash screen/ login with credentials

Download RTDC data for use in other applications

Improved and additional popup menus

Download Data by County

Query Data

Advanced Query/Show related data

Search Results

| Relate(s) | Station ID | ANode-Bnode pair | Direction of Counts | State | Available # of Counts in 2011 |
|-----------|------------|------------------|---------------------|-------|-------------------------------|
| | B160015 | 2617826178 | S | MD | 48 |
| | B160015 | 2617826166 | N | MD | 48 |

Related HourlyCountsMD Features

| Station ID | Direction | Date & Time | Measured Volume of Vehicle |
|------------|-----------|-------------------|----------------------------|
| B160015 | N | 12/08/08 11:00:00 | 71 |
| B160015 | N | 12/10/08 4:00:00 | 293 |
| B160015 | S | 12/10/08 2:00:00 | 341 |
| B160015 | S | 12/10/08 7:00:00 | 254 |
| B160015 | S | 07/12/11 11:00:00 | 315 |
| B160015 | S | 07/12/11 4:00:00 | 173 |
| B160015 | N | 12/10/08 11:00:00 | 258 |
| B160015 | N | 12/10/08 4:00:00 | 108 |
| B160015 | N | 07/13/11 10:00:00 | 252 |

Query Data

Selection Results: Round 8.1 Coop. Forecast Data (141)

| Households 200 | Population 2005 | Employment |
|----------------|-----------------|------------|
| 293 | 762 | 63 |
| 551 | 1434 | 271 |
| 885 | 2277 | 612 |
| 1913 | 5260 | 347 |
| 722 | 1965 | 574 |
| 591 | 1444 | 97 |
| 25 | 75 | 119 |
| 182 | 413 | 540 |
| 529 | 509 | 4603 |

Download Data by County

Feature Format: File Geodatabase - GDB - .gdb

Layers to Clip:

- Metro Stations - Entries
- Metro Lines
- Hourly Traffic Counts
- Annualized Traffic Volumes
- Transit - Avg. Weekday Ridership
- Screenlines
- Activity Centers
- Activity Clusters
- Round 8.1 Coop Forecast Data
- TPB Modeled Area
- TPB Member Jurisdictions
- MWCOC Members

Counties: District of Columbia

Download Data

- Download Data
- Download Data by County
- Download Hourly Count Tables

Sign In

Please sign in to access RTDC data.

Username: _____

Password: _____

TPB National Capital Region

Regional Transportation Data Clearinghouse

Advanced Query/Show related data

Features Selected: 2

B160015
ANode-Bnode pair: 2617826166
Direction of Counts: N
State: MD
Available # of Counts in 2011: 49
Available # of Counts in 2010: 48
Available # of Counts in 2009: 48
Available # of Counts in 2008: 49

B160015
ANode-Bnode pair: 2616626179
Direction of Counts: S
State: MD
Available # of Counts in 2011: 49
Available # of Counts in 2010: 48
Available # of Counts in 2009: 48
Available # of Counts in 2008: 49

Download RTDC data for use in other applications

Improved and additional popup menus

Name/Route = Clara Barton Pkwy GV0006

Station number: B150077

Route Name: Clara Barton Pkwy

Route ID: GV0006

Facility Type: Freeway

Jurisdiction: Montgomery County

2005 AADT: 10,838

AAWT: 11,738

Count Type: Volume from a program count done in the current year

2005 AADT: 10,838

2005 AADT: 11,738

2005 AADT: 10,838

2005 AADT: 11,738

Components of the RTDC

Widgets- the tools that provide application functionality

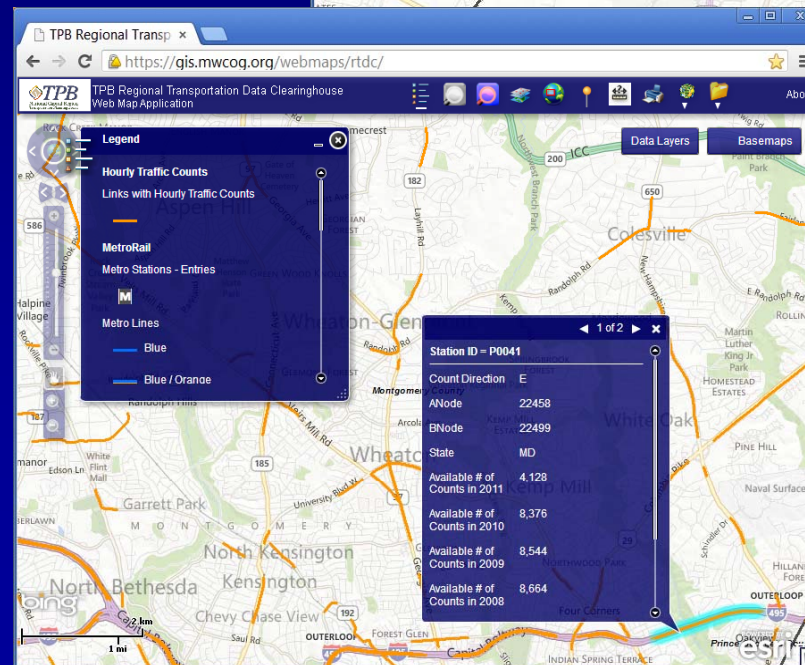
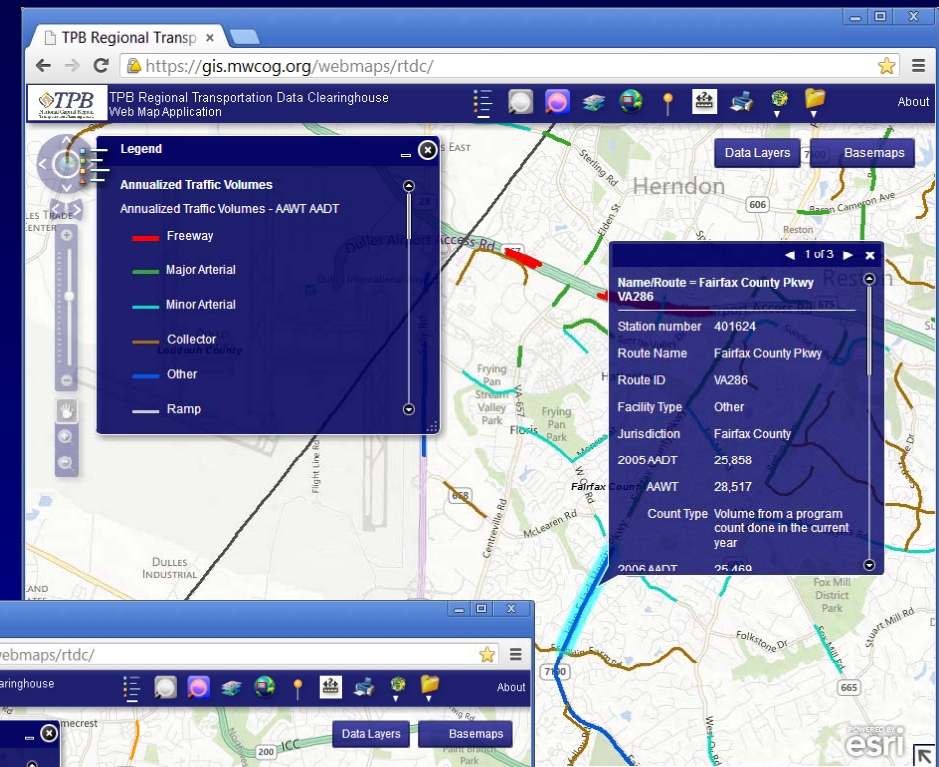
- Query ('select by attribute')
- Advanced Query- show related data tables
- Download Data
- Documents (User's Guide)
- General
 - Legend – show symbology for data layers
 - Zoom to Jurisdictions
 - Find an Address
 - Draw and Measure
 - Print

Available data layers

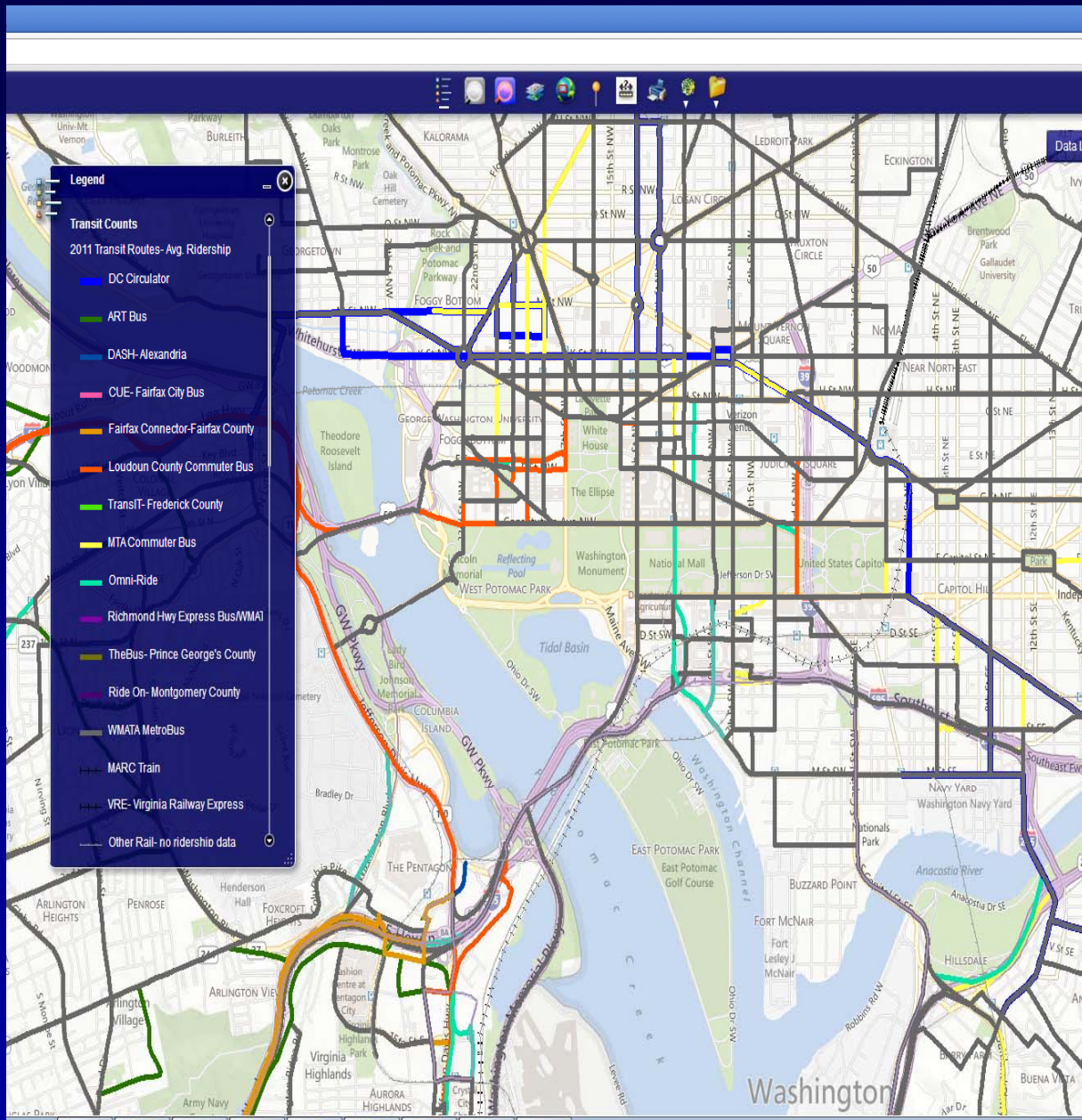
- Highway network (traffic related)
 - Annualized Annual Volumes
 - AADT
 - AAWDT
 - Hourly Traffic Counts
- Transit Routes- Average Ridership
- WMATA
 - Metro Stations
 - Metro Lines
- Round 8.1 Cooperative Forecast by TAZ
- Version 2.3 Screenlines
- Activity Centers & Clusters (Round 7)
- Regional Boundaries

Highlights- Traffic Counts/Volumes

- Improved traffic count/volume information for TPB regional highway network links
- Updated Annualized Traffic Volumes layer to include 2005-2011 data
- Updated Hourly Traffic Counts layer to include 2008-2011 data
- Utilized TPB highway network (dual link) for counts layers
- Added 2.3 version traffic screenlines



Highlights- Transit ridership data

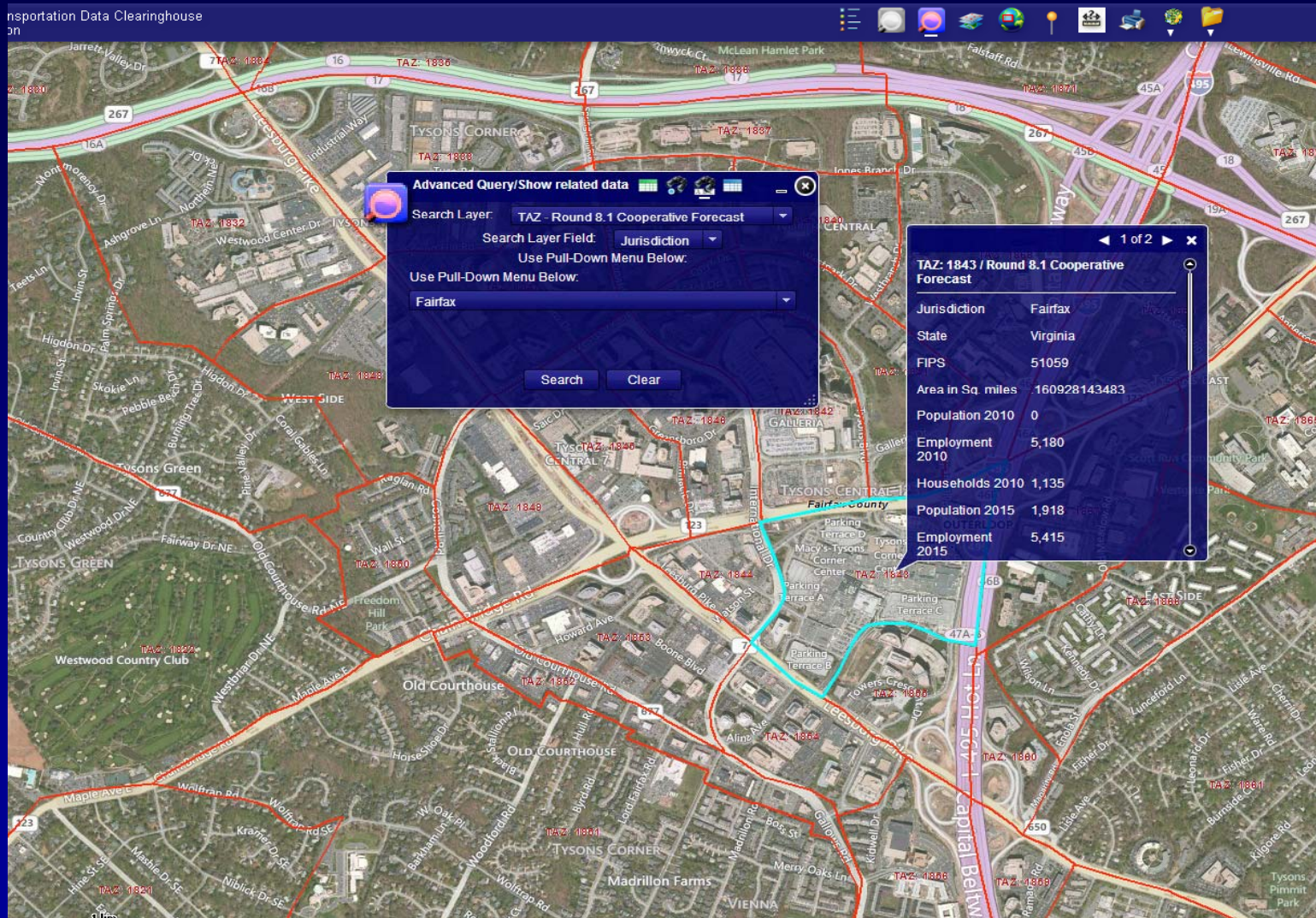


New & existing transit ridership data joined to the 2011 year TPB regional transit network.

Improvements include

- Added DC Circulator routes and ridership data
- Added CUE ridership data
- Added REX routes and ridership data
- Monthly ridership totals through September 2012 (where available)

Highlights- Cooperative Forecast



- Round 8.1 Cooperative Forecast land use data by Transportation Analysis Zone (TAZ)

Demonstration

Looking ahead

- Currently the RTDC team is focusing on application improvements and refinements
- Longer term improvements
 - Data: additional datasets- what can we add to the RTDC?
 - Capital Bikeshare Stations
 - Metro Station entry/exit data
 - Other WMATA survey data
 - Data: update current RTDC layers with current data as it becomes available
 - Application: additional ways to access the data via the interface

The RTDC team

Charlene Howard

John Kent

Martha Kile

Nicole McCall

Yew Yuan

**For more questions or comments regarding data,
please contact**

Charlene Howard

Principal GIS Analyst

202/ 962.3384

charlene@mwkog.org

<https://gis.mwkog.org/webmaps/rtdc>