

PlanMaryland

*PlanMaryland
Briefing*

*Metropolitan Washington
Council of Governments
PDTAC*

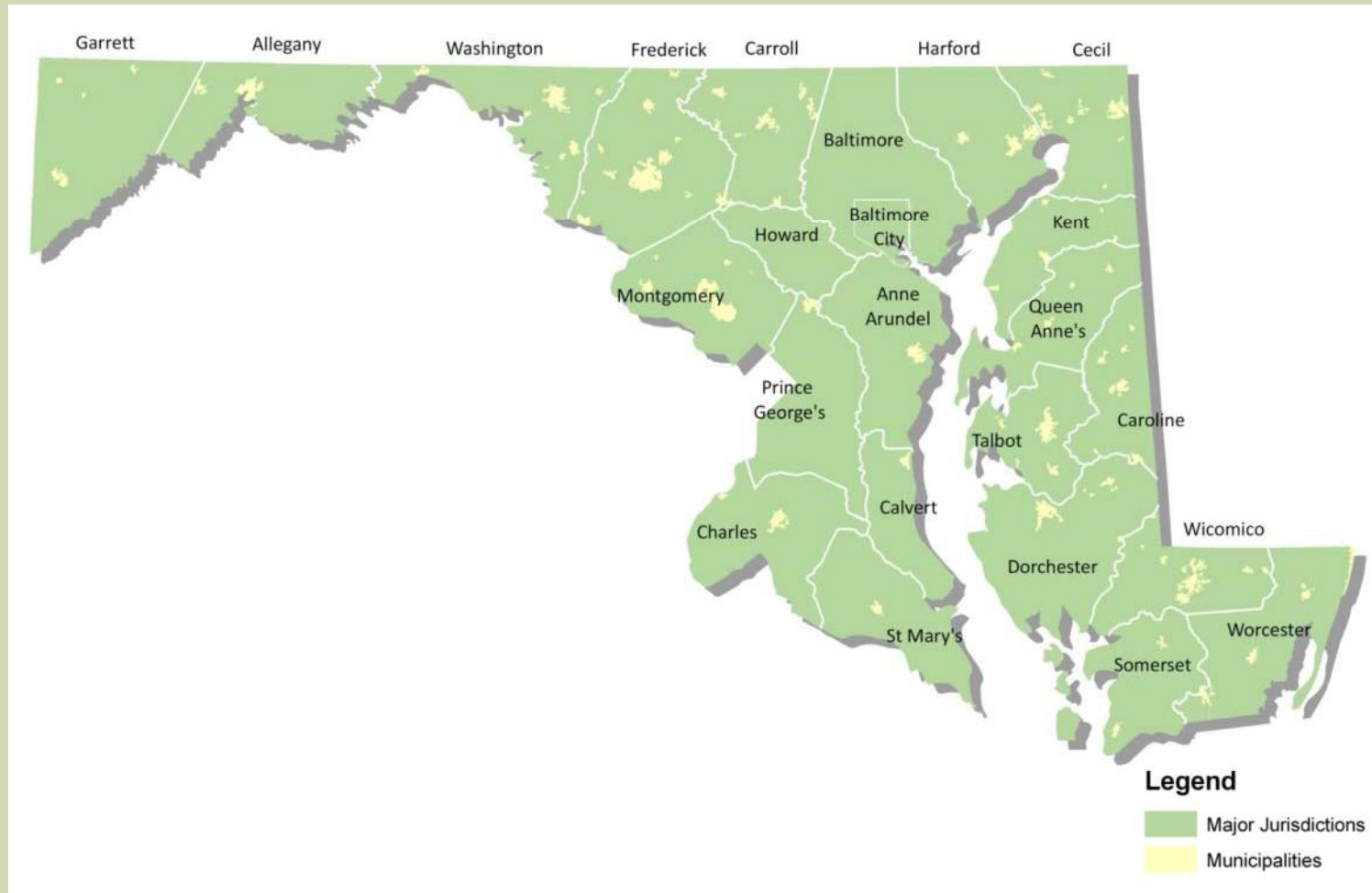
October 21, 2011



Why A State Development Plan?



Planning – Land Use Authority in Maryland



What PlanMaryland does

- **Informs choices for the future**
- **Provides a smart growth strategy for Maryland that protects our Bays and keeps our communities vibrant**
- **Enhances long-term economic development and job creation**
- **Leads to more efficient use of tax dollars for infrastructure, other public services, and programs**
- **Provides a structure to coordinate State agencies with local governments**
- **Helps to implement the 12 Planning Visions**



PlanMaryland can save money

Public Infrastructure Costs: Current Trend vs. Smart Growth by 2030

	Current Policy Scenario	Smart Growth Scenario	% Savings with Smart Growth
Roads			
Miles of Road	12,349	7,896	36%
New Construction Costs	\$103 billion	\$74 billion	28%
Maintenance/Repair Costs	\$1,063 million	\$680 million	36%
Water/Sewer			
Total Costs	\$2.17 billion	\$2.11 billion	3%
Schools			
Construction Costs	\$3.54 billion	\$3.19 billion	10%

Source: Maryland Department of Planning

Potential to:

- **Save \$29 billion in new road construction costs**
- **Save \$383 million in road maintenance costs**
- **Save \$406 million in water/sewer and school construction costs**



What PlanMaryland will NOT do:

Be a substitute for local comprehensive plans

Be a top-down approach that forces compliance

Be a silver bullet to solve all problems

Be a “one size fits all” approach to state planning

Be a mandate to spend more money

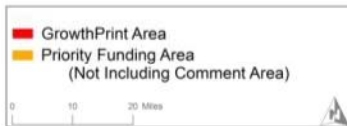
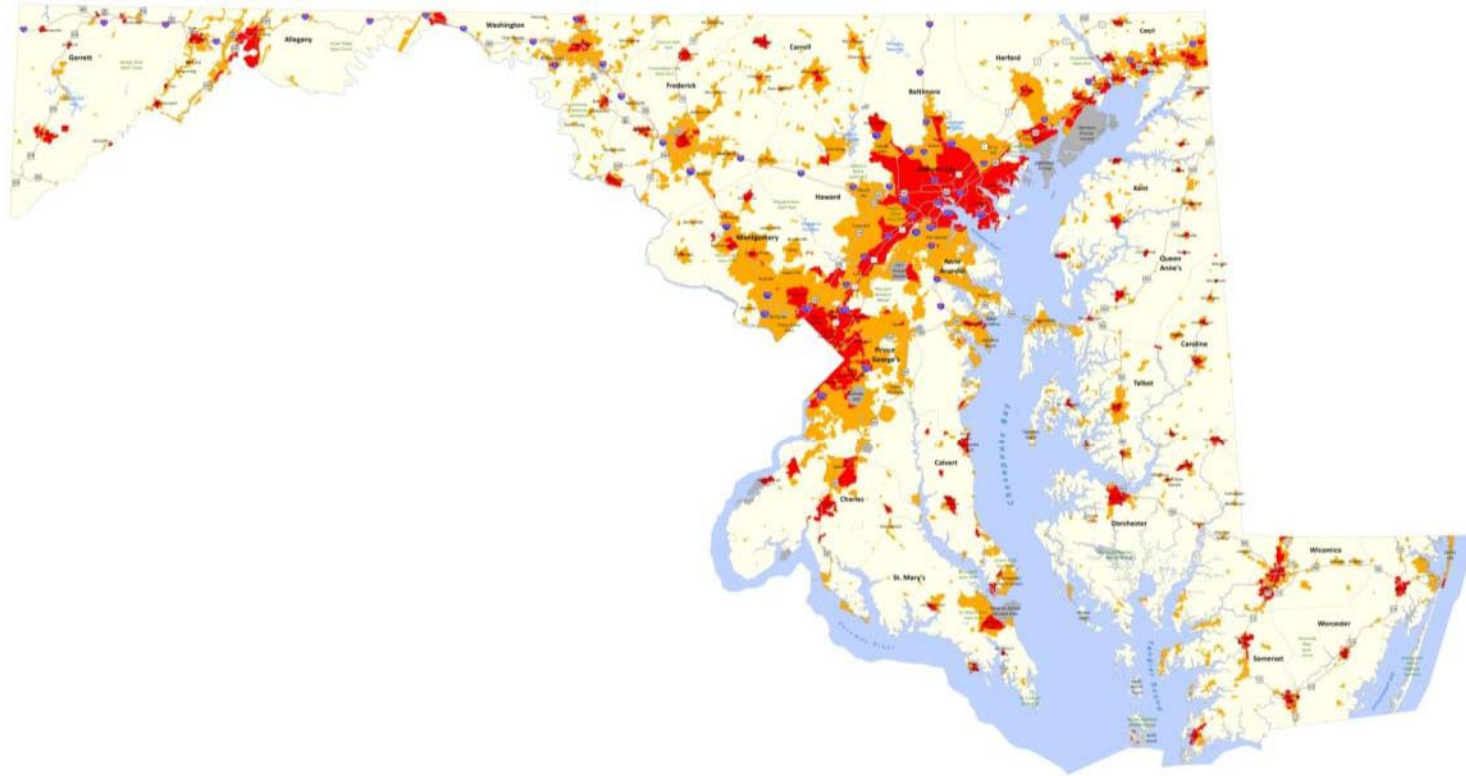


Land Use Trends – 2010 Update

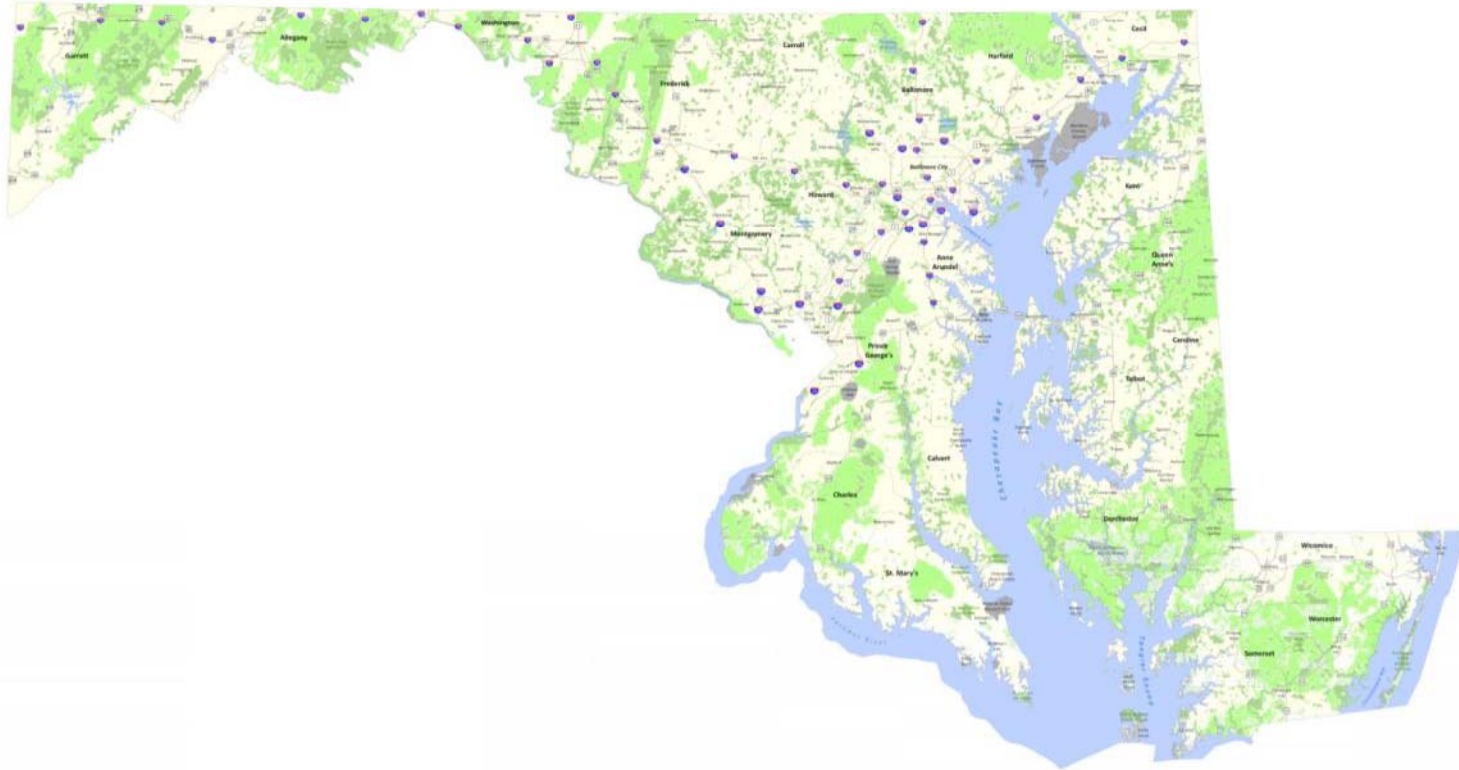
- Rate of development outpaced population growth between 1973 and 2010 - developed lands increased by 154% while the population grew by 39%.
- Large-lot development dominates the landscape – more than 50% of developed land holds 15% of State's housing units.
- More than 1 million acres of agriculture and forest lands lost since 1973.



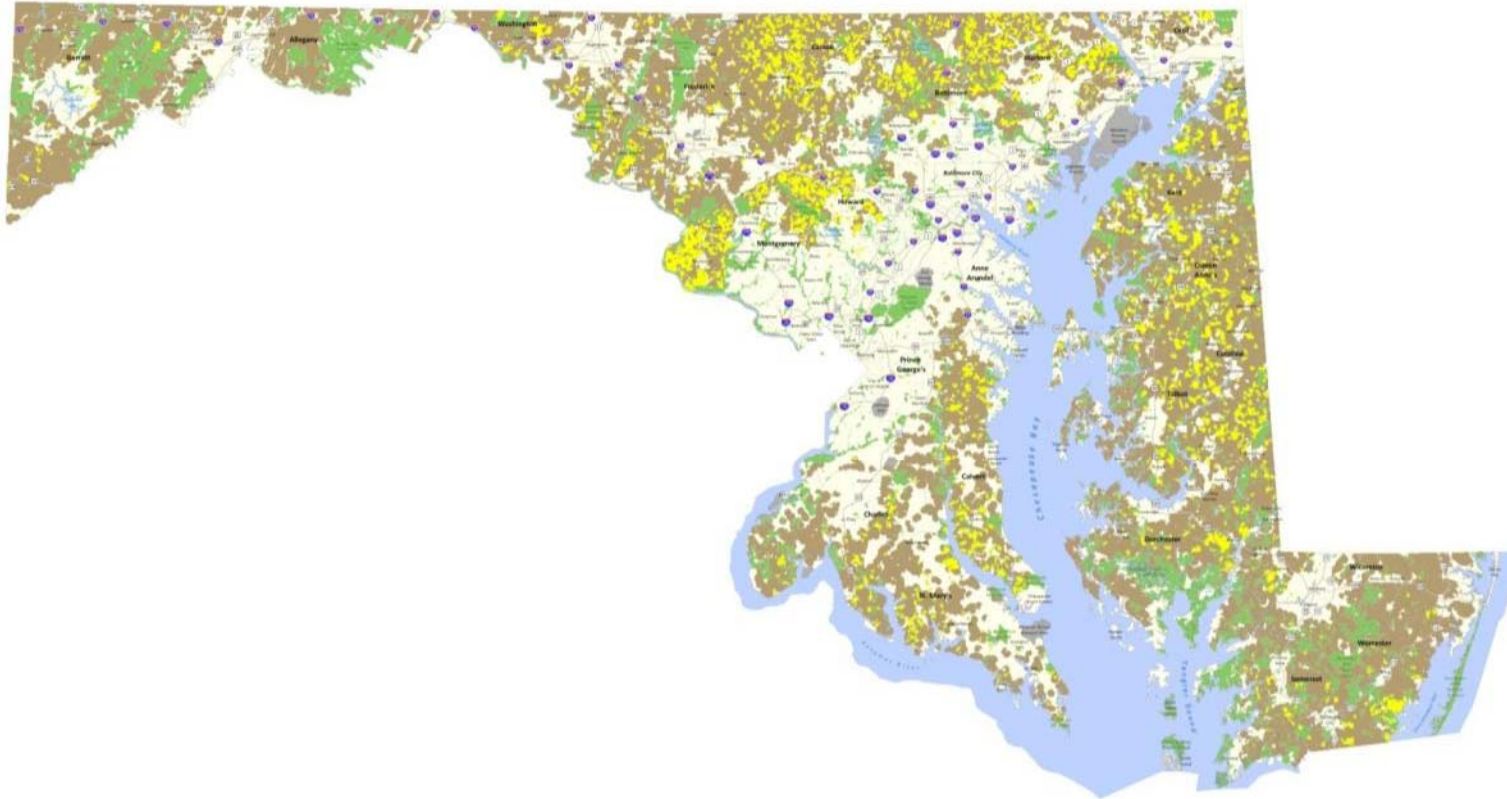
GrowthPrint

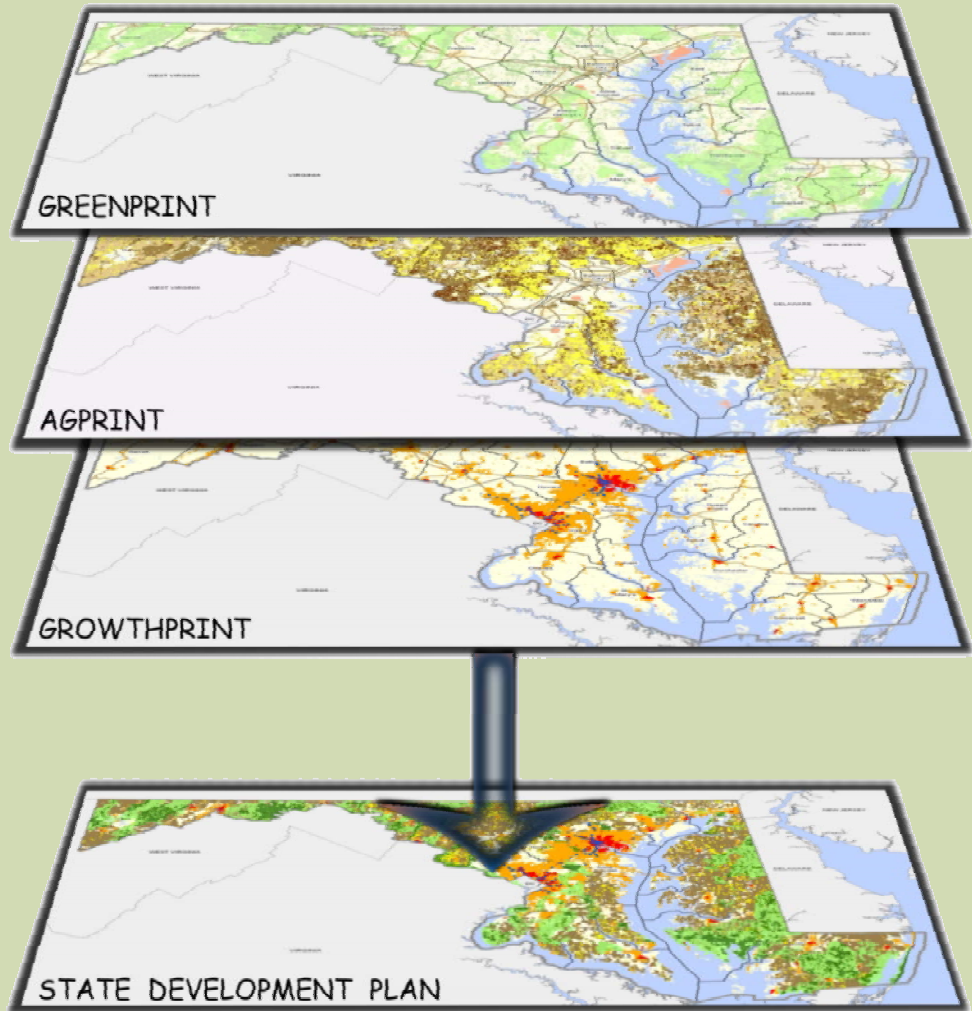


GreenPrint



AgPrint





Key points about the Plan

- Policy & process plan
- Staged process
- Ongoing stakeholder involvement



PlanMaryland Framework

Process to establish clearly defined targeted geographies – Designated Places and Special Areas

Process to guide state agencies – Implementation Strategies

Align/ focus State capital and noncapital plans, programs, and procedures

Align state and local places with local plans and implementation mechanisms



How PlanMaryland works

Improve coordination and required collaboration:

Among State agencies; and
Between State and Locals

Collaborative Process to:

Formulate criteria for Designated Places
and Special Areas
Identify areas for growth and preservation
and target assistance
Help implement local comprehensive plans



PlanMaryland Benchmarks

Growth

- Focus 90% of new dwelling units in PFAs between 2010 – 2030.

Protect

- Save 300,000 acres from being convert to development between 2010 - 2030

Sustainable Communities

- Double transit ridership by 2020
- Reduce Maryland's Greenhouse Gas Emissions by 25% by 2020.



Public Involvement



Completion Process - How PlanMaryland will be completed and updated

- **Completion of the 120 day comment period on the April 2011 Draft Plan ended on September 1, 2011**
- **Revised Draft PlanMaryland issued on September 9, 2011**
- **Additional 60 day comment period on September Revised Draft, through November 9, 2011**
- **Plan to be provided by the Secretary of Planning to the Governor**
- **Plan will be updated as needed**



Visit Plan.Maryland.gov



More than 500 followers on Facebook at www.facebook.com/plan.maryland

Nearly 1000 followers on Twitter at www.twitter.com/SmartGrowthMD

