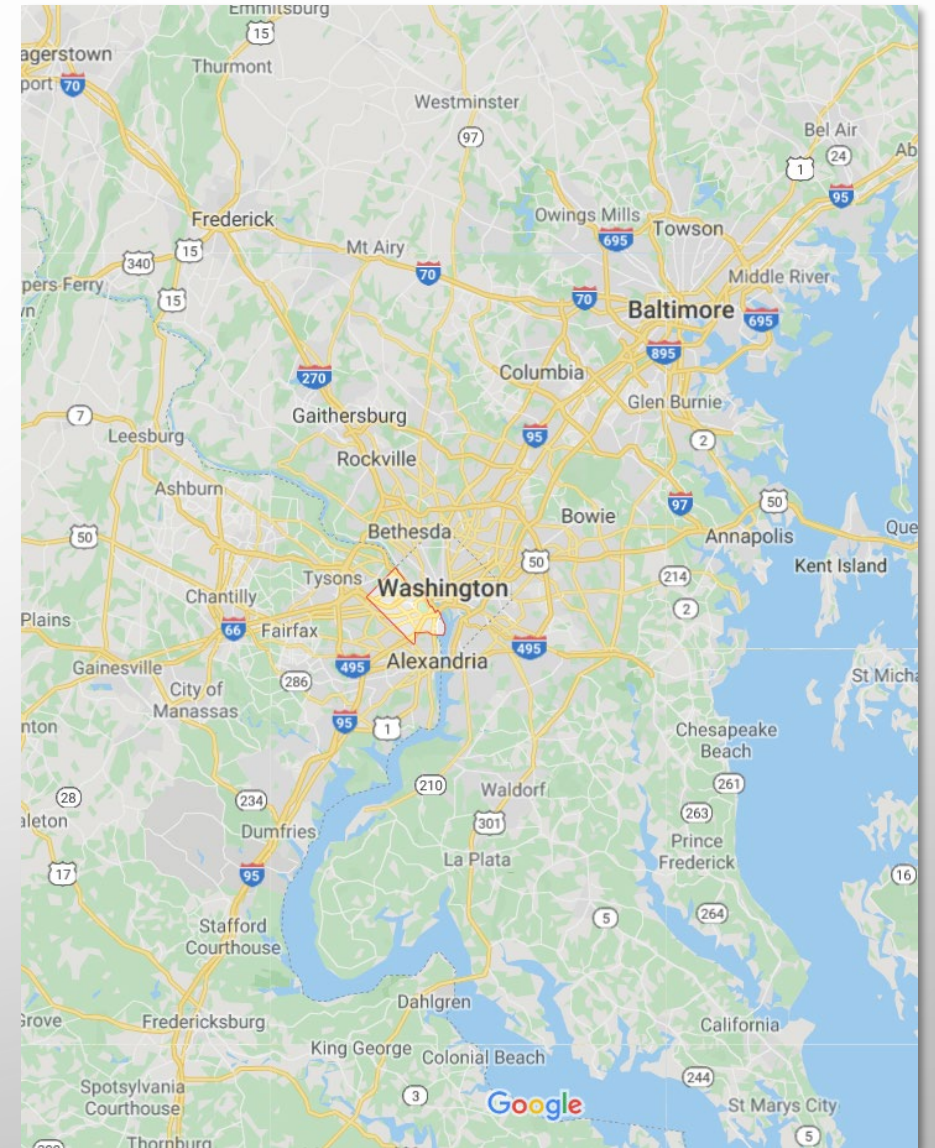


MANAGING WATER FROM THE FRONT LINES IN ARLINGTON, VA

COG CHESAPEAKE BAY AND WATER RESOURCES
POLICY COMMITTEE
ANNUAL FORUM WITH EPA, MD, VA, AND DC
SEPTEMBER 25, 2020

LIBBY GARVEY
CHAIR, ARLINGTON COUNTY BOARD

JASON PAPACOSMA
WATERSHED PROGRAMS MANAGER
DEPARTMENT OF ENVIRONMENTAL SERVICES

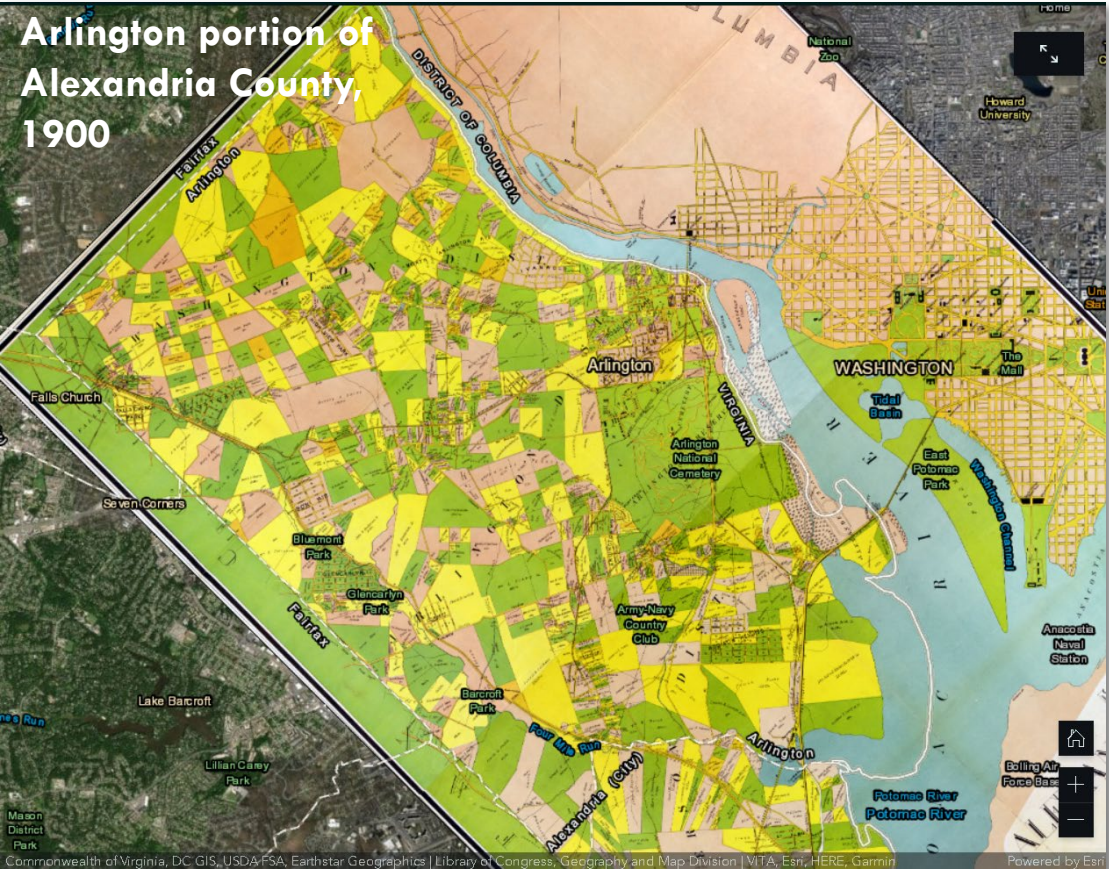


**MANAGING WATER IS A
PRIORITY NEED AND
GROWING CHALLENGE FOR
LOCAL GOVERNMENTS IN
THE COG REGION**

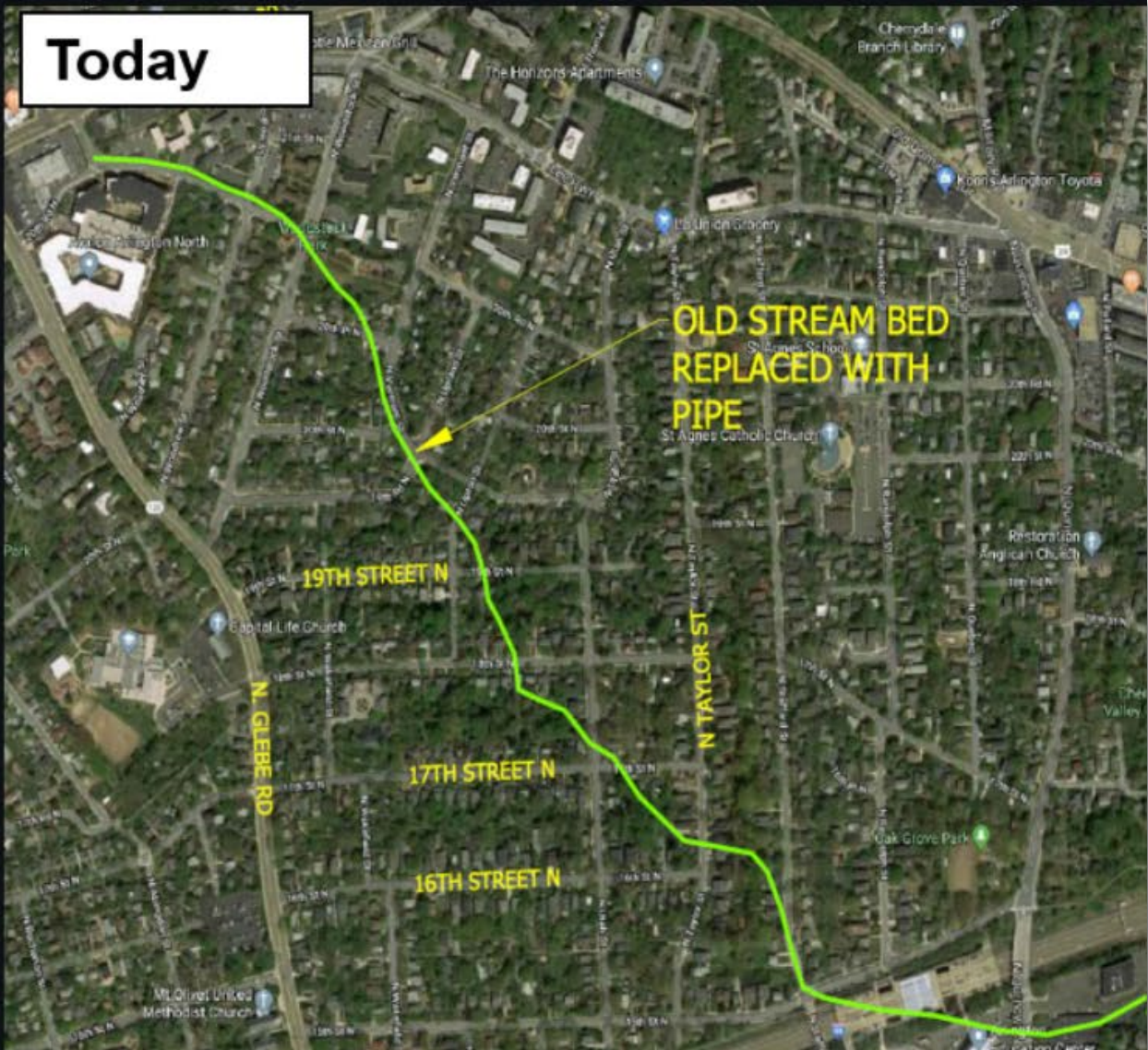
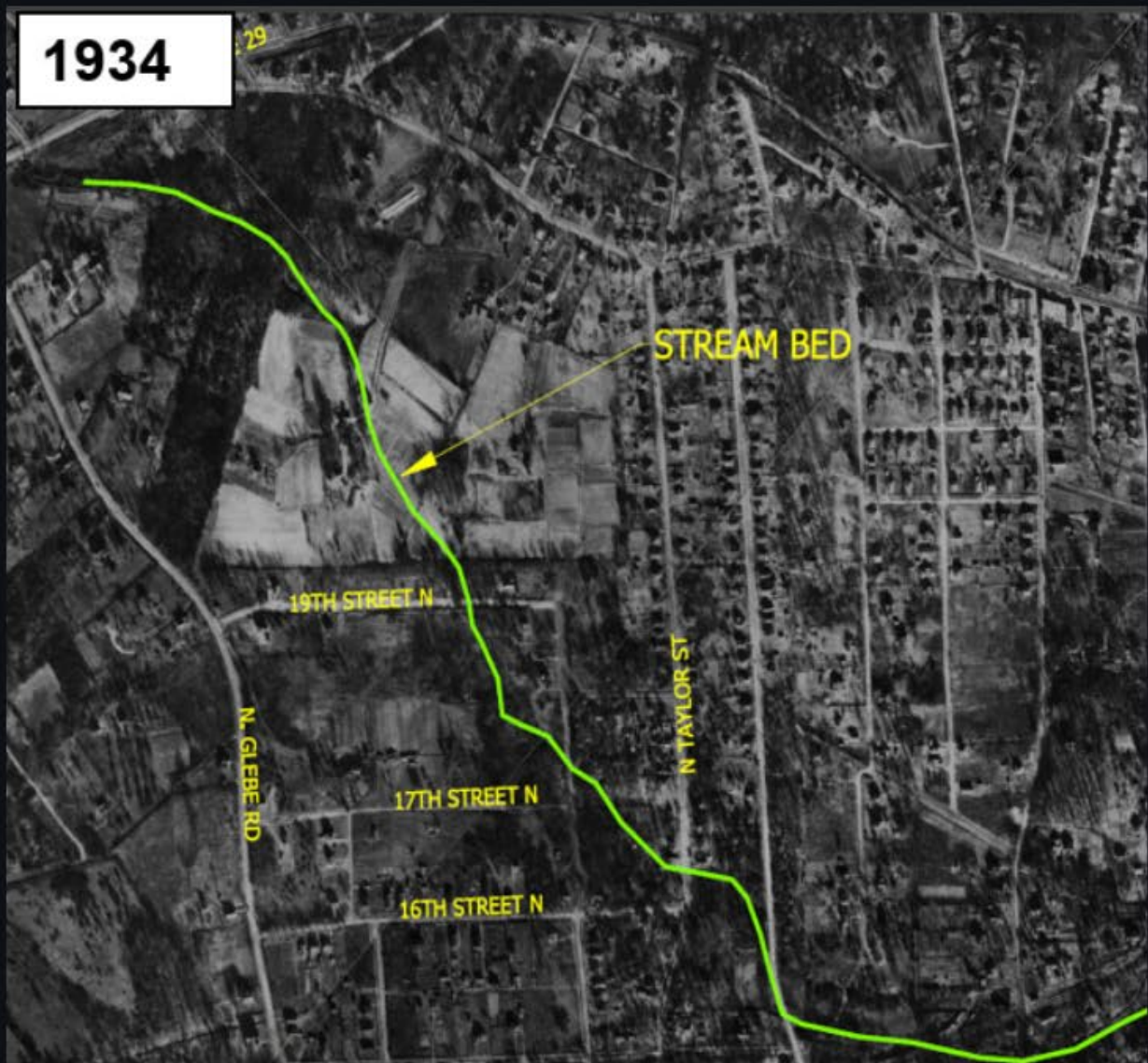


Development
Flooding
Regulations
Wastewater
Climate change
Water quality
Water
Population growth
Stormwater
Drinking water
Sea level rise

ARLINGTON, THEN AND NOW



CHALLENGE: ACUTE FLOODING



**FLOODING
WITHOUT
'OVERLAND
RELIEF' TO
CONVEY
FLOODWATERS
SAFELY**

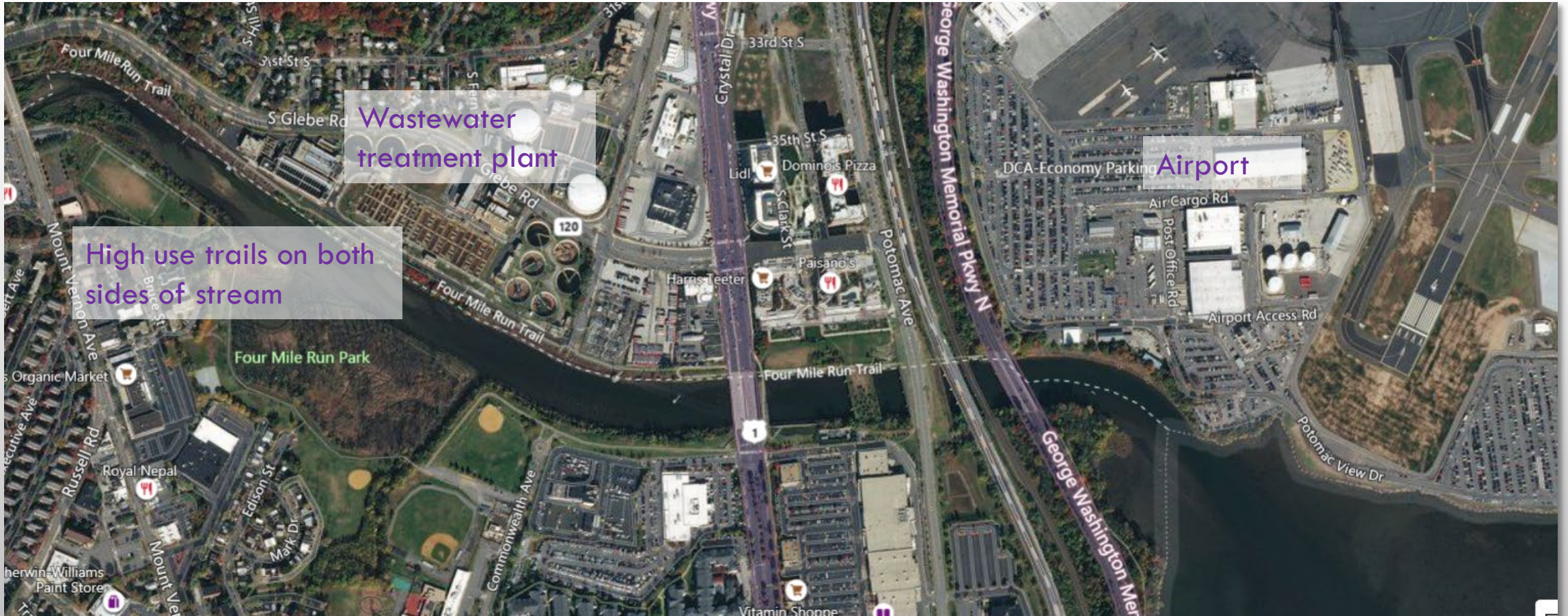


**INUNDATION FROM
INTERIOR FLOODING**



*July 8, 2019
100 to 500+ year rainfall*

CHALLENGE: SEA LEVEL RISE



CHALLENGE: STREAMS, WATER QUALITY, AND REGULATORY COMPLIANCE

- CONTINUED EROSION THREATENING INFRASTRUCTURE, PUBLIC SAFETY, AND WATER QUALITY
- GROWING CHEMICAL AND BIOLOGICAL IMPAIRMENTS (E.G., SALT, AQUATIC ECOLOGY)
- BAY TMDL



WE'RE MAKING SIGNIFICANT INVESTMENTS

- RISK ASSESSMENT PLANNING AND FLOOD RISK REDUCTION PROJECTS
- STREAM RESTORATION AND REPAIR
- GREEN INFRASTRUCTURE
- MITIGATING DEVELOPMENT ACTIVITY IMPACTS
- STATE LEADER IN ADVANCED WASTEWATER TREATMENT



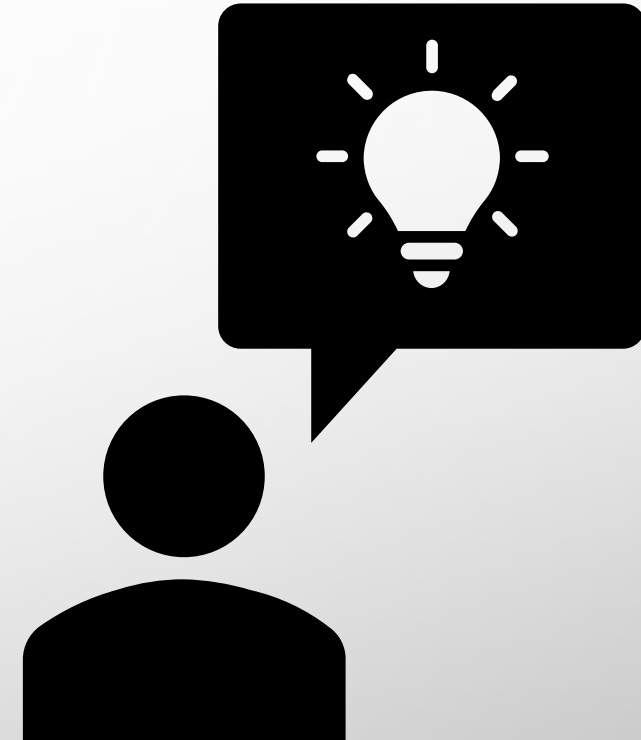
WHERE WE GO FROM HERE

- ARE AGENCIES THAT MANAGE WATER IN SYNC WITH EACH OTHER?
- IS THE GROWING URGENCY OF ADDRESSING CLIMATE CHANGE TAKEN INTO ACCOUNT IN REGULATORY TIMELINES?
- HOW CAN LOCAL GOVERNMENTS BE GIVEN THE FLEXIBILITY TO BALANCE MULTIPLE PRIORITIES?
- ARE WE TAKING ADVANTAGE OF OPPORTUNITIES FOR SMARTER INVESTMENTS?



NEW REALITIES REQUIRE CHANGE TO RE-POSITION FOR SUCCESS

- **INTEGRATION.** OF WATER AND RISK MANAGEMENT AT ALL LEVELS OF GOVERNMENT.
- **TIME.** REGULATORY FRAMEWORKS AND TIMELINES NEED TO ADAPT.
- **LOCAL CUSTOMIZATION.**
- **FUNDING AND SMART INVESTMENTS.**
 - MORE FEDERAL AND STATE RESOURCES
 - TARGET INCREASED EFFORTS FOR MAXIMUM BENEFIT FOR PEOPLE AND THE ENVIRONMENT



QUESTIONS

