

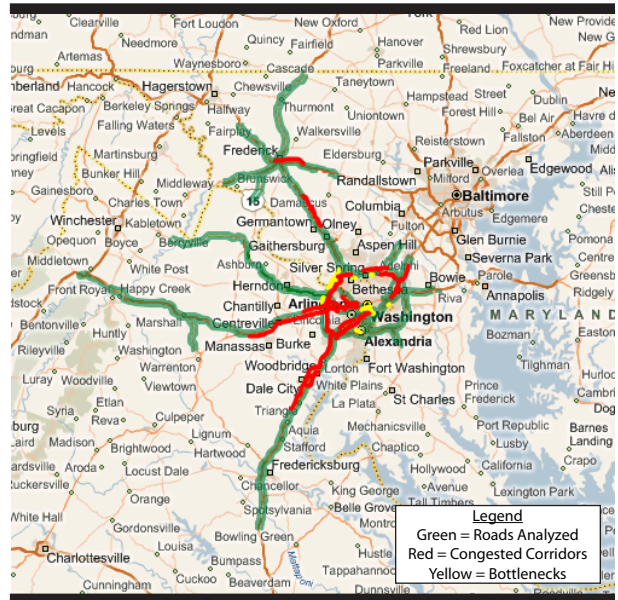
## #4

# Washington Metropolitan Area

### National Congestion Rank: #4

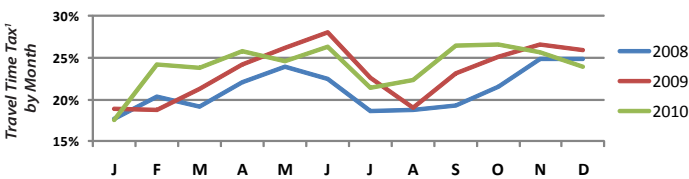
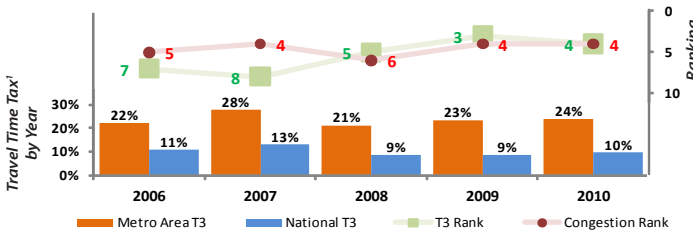
—40% of Peak Period<sup>2</sup> Congestion of Nation's Worst Metro Area (L.A.)

### Population Rank: #8 (5,476,000)

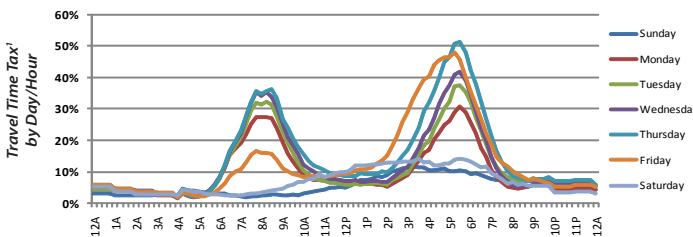


CBSA<sup>4</sup>: Washington-Arlington-Alexandria DC-VA-MD-WV

### Trends for Peak Period<sup>2</sup> Congestion in Metro Area



### Patterns for 2010 Congestion in Metro Area



What Was the Worst Time? **Thursday, 5:30-5:45 PM [51% Travel Time Tax']**

### Impact of Employment Changes

	Total Employment		Change		Travel Time Tax <sup>1</sup>		Change	
	2006	2010	Total	%	2006	2010	Total	%
<b>Metro Area</b>	3013 K	3007 K	-6 K	-0.2%	22.2%	24.0%	1.8%	8.2%
<b>Top 100 Metros</b>	93.3 M	87.9 M	-5.4 M	-5.8%	11.1%	9.7%	-1.4%	-12.7%
<b>National</b>	136.9 M	130.7 M	-6.2 M	-4.5%	N/A			

## Congested Corridors and Bottlenecks

across Metro Area in 2010

### Congested Corridors<sup>5</sup> (14 Total in Metro Area)

Regional Rank	National Rank	Road/Direction	From	To	Uncongested		Peak Period <sup>2</sup>		Worst Hour			
					Length (miles)	Travel Time (min)	(AM/PM)	Travel Time (min)	Tax <sup>1</sup> (%)	(Day & Hour)	Travel Time (min)	Tax <sup>1</sup> (%)
1	14	I-95 SB	I-395	RUSSELL RD/EX 148	23.9	23	PM	52	129%	F, 4-5pm	86	275%
2	19	Capital Beltway/I-495 Inner Loop	I-95/I-395/EX 57	MD-650/NEW HAMPSHIRE AVE/EX28	20.7	20	PM	47	129%	F, 4-5pm	68	233%
3	28	Capital Beltway/I-495 Outer Loop	US-1/BALTIMORE AVE/EX 25	MD-97/GEORGIA AVE/EX 31	6.3	6	AM	19	210%	Th, 8-9am	29	372%
4	52	Custis Mem Pkwy/I-66 EB	VA-234/PR WM PKWY/EX 44	MD-355/WISCONSIN AVE/EX 34	24.4	24	AM	44	87%	Th, 8-9am	58	144%
5	78	Shirley Hwy/I-395 NB	I-95/I-495	SOUTHWEST FWY	10.8	11	AM	24	110%	Th, 8-9am	35	211%
6	82	MD 295/ Balt Wash Pkwy NB	MD-450	POWDER MILL RD	7.7	7	PM	17	134%	F, 5-6pm	22	205%
7	101	Custis Mem Pkwy/I-66 WB	US-29/LEE HWY/EX 73	VA-123/EX 60	14.8	15	PM	28	88%	Th, 6-7pm	32	115%
8	147	George Washington Pkwy SB	VA-123/CHAIN BRIDGE RD	US-29	4.5	5	AM	10	124%	T, 8-9am	20	348%
9	225	Shirley Hwy/I-395 SB	QUAKER LN/EX 6	VA-236/DUKE ST/EX 3	3.6	4	PM	7	105%	W, 5-6pm	10	170%
10	241	John Hanson Hwy/US-50 WB	GARDEN CITY DR/EX 6	COLUMBIA PARK RD	3.0	3	AM	6	109%	W, 7-8am	10	231%

### Bottlenecks (72 Total in Metro Area)

Regional Rank	National Rank 2010	National Rank 2009	Road/Direction	Segment/Interchange	County	State	Length (miles)	Hours of Congestion <sup>3</sup>	Average Speed when Congested <sup>3</sup> (mph)
1	168	140	Custis Mem Pkwy/I-66 WB	FAIRFAX DR/EXIT 71	Arlington	VA	0.57	52	18.7
2	174	127	Custis Mem Pkwy/I-66 EB	VA-267/EXIT 67	Fairfax	VA	0.22	43	15.7
3	227	198	Shirley Hwy/I-395 NB	BOUNDARY CHANNEL DR/10TH ST/EXIT 10	Arlington	VA	0.24	43	14.6
4	230	270	Capital Beltway/I-495 EB	I-270/EXIT 35	Montgomery	MD	0.70	35	13.2
5	257	290	Capital Beltway/I-495 EB	MD-355/WISCONSIN AVE/EXIT 34	Montgomery	MD	0.73	35	14.4
6	287	234	Shirley Hwy/I-95 SB	VA-7100/EXIT 166	Fairfax	VA	1.81	42	19.8
7	350	309	Shirley Hwy/I-395 NB	VA-110/EXIT 9	Arlington	VA	0.34	30	13.9
8	353	523	Shirley Hwy/I-95 SB	VA-123/EXIT 160	Fairfax	VA	0.84	42	22.3
9	360	408	Custis Mem Pkwy/I-66 WB	VADEN DR/EXIT 62	Fairfax	VA	0.67	37	19.4
10	398	365	Custis Mem Pkwy/I-66 EB	US-29/VA-237/EXIT 69	Arlington	VA	0.36	43	23.8

- 1 - **Travel Time Tax** is the percentage of extra travel time (vs. "free flow") a random trip takes in the specific region and time period analyzed. A 10% tax means 10% additional trip time due to congestion.
- 2 - **Peak hours** are Monday to Friday, 6 to 10 AM and 3 to 7 PM.
- 3 - **"Hours of Congestion"** is defined as times of the week when a road segment's average hourly speed is half or less than its uncongested speed.
- 4 - **CBSA** stands for "Core Based Statistical Area," the official term for a functional region based around an urban center of at least 10,000 people, based on standards published by the U.S. Government's Office of Management and Budget (OMB).
- 5 - **Corridors** are composed of multiple contiguous bottlenecks totaling at least 3 miles in length.

Additional information on the methodologies used in this report are available at <http://scorecard.inrix.com>.