

## **ITEM 10 - Information**

July 18, 2007

### Briefing on Visualization of the Constrained Long Range Transportation Plan (CLRP) and Land Use Information

#### **Staff**

**Recommendation:** Receive briefing on new Web-based capabilities to facilitate visualization of the projects and land use information associated with the CLRP.

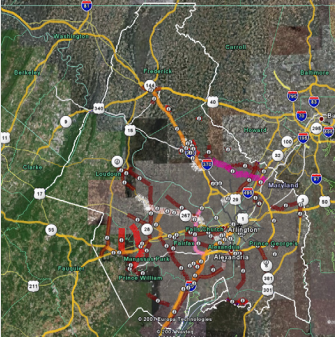
**Issues:** None

**Background:** This briefing was deferred from the June 20 meeting. The US DOT final planning regulations issued in February 2007 to implement the Safe, Accountable, Flexible, and Efficient Transportation Equity Act - A Legacy for Users (SAFETEA-LU) require MPOs to employ visualization techniques to depict metropolitan transportation plans. A Web-based visualization has been developed of the projects and land use information for the current 2006 CLRP that utilizes the dynamic mapping features available in the free geo-spatial software technology in Google Earth™. Test versions of this visualization were presented to the TPB Technical Committee for its review and comment in February, March, April and June.



# Visualization of the CLRP

Advanced visualization of the Constrained Long-Range Transportation Plan using Google Earth.™



## How do projects planned for 2030 support the regional transportation network?

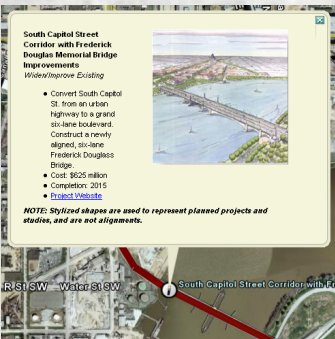
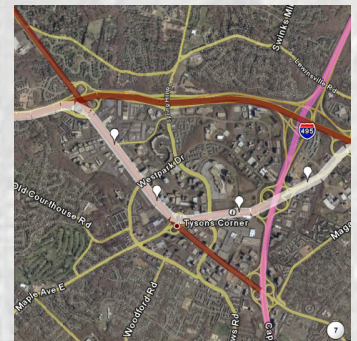
Regional view displays planned transportation projects and land use data, including:

- Highway projects
- Transit, HOV and HOT lane projects
- Studies of new facilities
- Existing facilities, such as commuter rail and Metro rail

## How does the region look from satellite photography?

Dynamic mapping, using Google Earth™:

- Aerial and satellite photography
- Easy navigation: zoom in and out, pan side to side
- Existing roads, jurisdictional boundaries and place names



## What's in the plan for 2030 around the region and in your neighborhood?

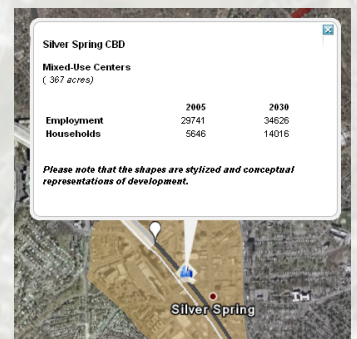
Detailed project information, including:

- Facility name and type
- Project cost
- Completion date
- Links to project websites and other available information

## Where will jobs and housing will be in 2030?

Activity Center land-use data from the Round 7.0a Cooperative Forecast:

- Activity Center name, type and size
- Households and jobs data from 2005
- Projections of households and jobs for 2030



Available now at [http://www.mwcog.org/clrp\\_viz](http://www.mwcog.org/clrp_viz)

National Capital Region Transportation Planning Board

777 North Capitol Street, NE Suite 300  
Washington, DC 20002-4239

Image © 2007 Sanborn