



Financially Constrained
**Long-Range
Transportation Plan**
For the National Capital Region

CLRPP
2015

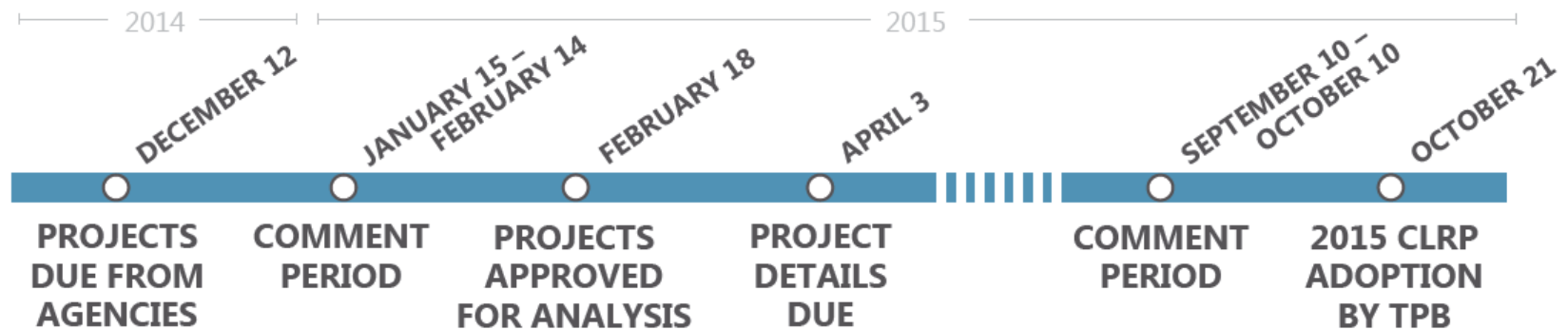
**BRIEFING ON PROPOSED
ADDITIONS AND CHANGES**
Additions and Changes to Projects Proposed
for Inclusion in the 2015 CLRPP Update

January 21, 2015

The Annual CLRP Update

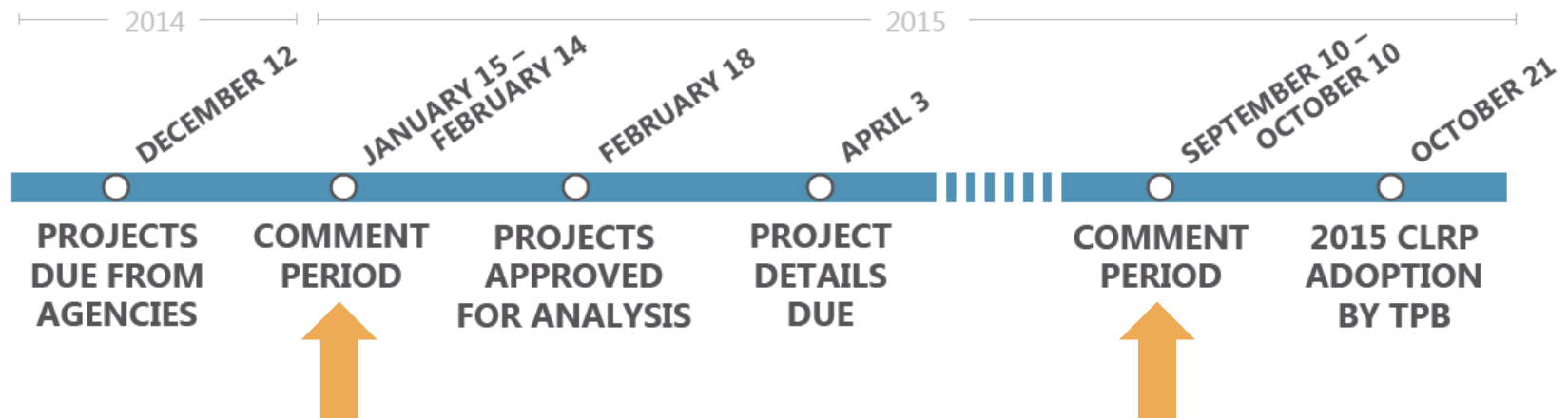
- Add new projects to the plan or make changes to projects already in the plan
- Conduct Air Quality Conformity Analysis and Performance Analysis prior to adoption by TPB

SCHEDULE FOR DEVELOPMENT & ADOPTION OF THE 2015 CLRP UPDATE



Public Involvement

- Additions and changes submitted for inclusion in the CLRP have been developed by local, state, and/or regional agencies with input from the public.
- Two 30-day comment periods during the annual CLRP update process provide additional opportunities for input:

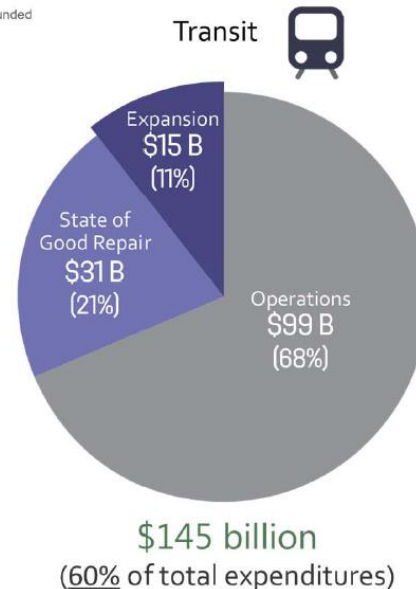
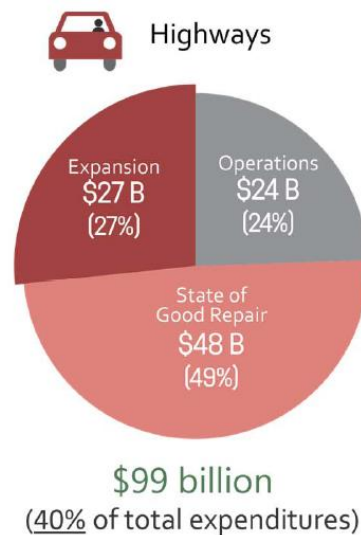


What is the CLRP?

- Federally required long-range transportation plan
- Includes all regionally significant highway, bridge, and transit projects currently planned through 2040
- Funding must be “reasonably expected to be available” to build, operate, and maintain the planned system
- Must conform with federal air quality standards

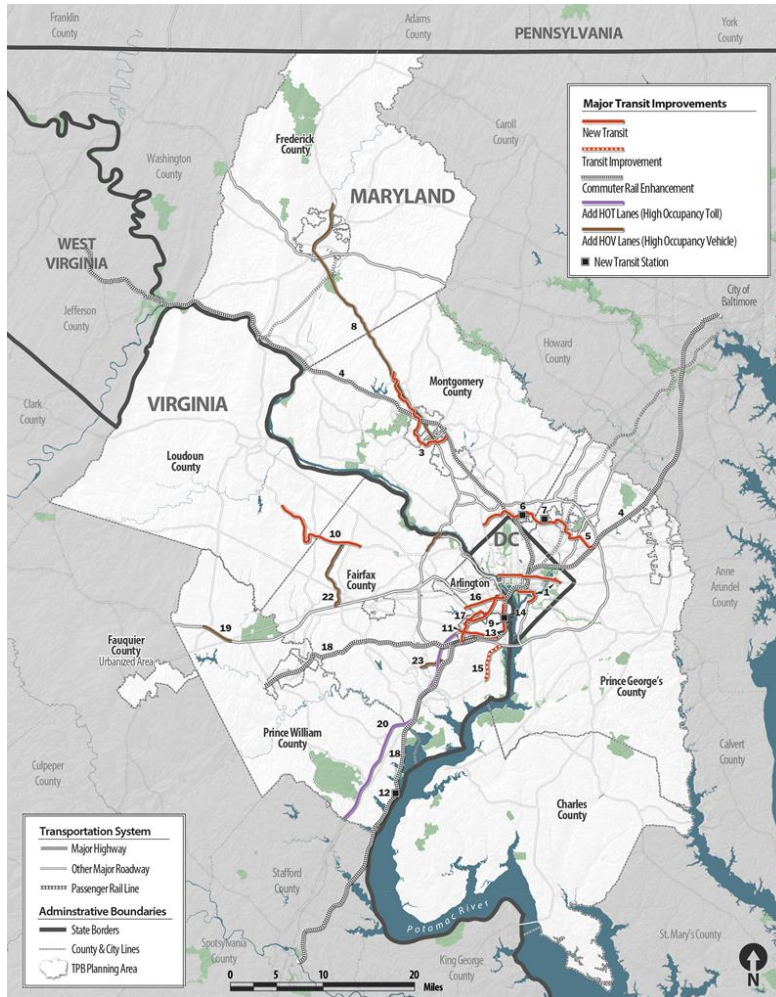
What's Already in the CLRP?

- **500+** regionally significant highway, bridge, transit, bicycle, and pedestrian improvement projects
- **1,188 new lane-miles** of roadway (7% increase from today)
- **44 new miles** of rail transit (15% increase from today)
- **\$244 billion** in spending

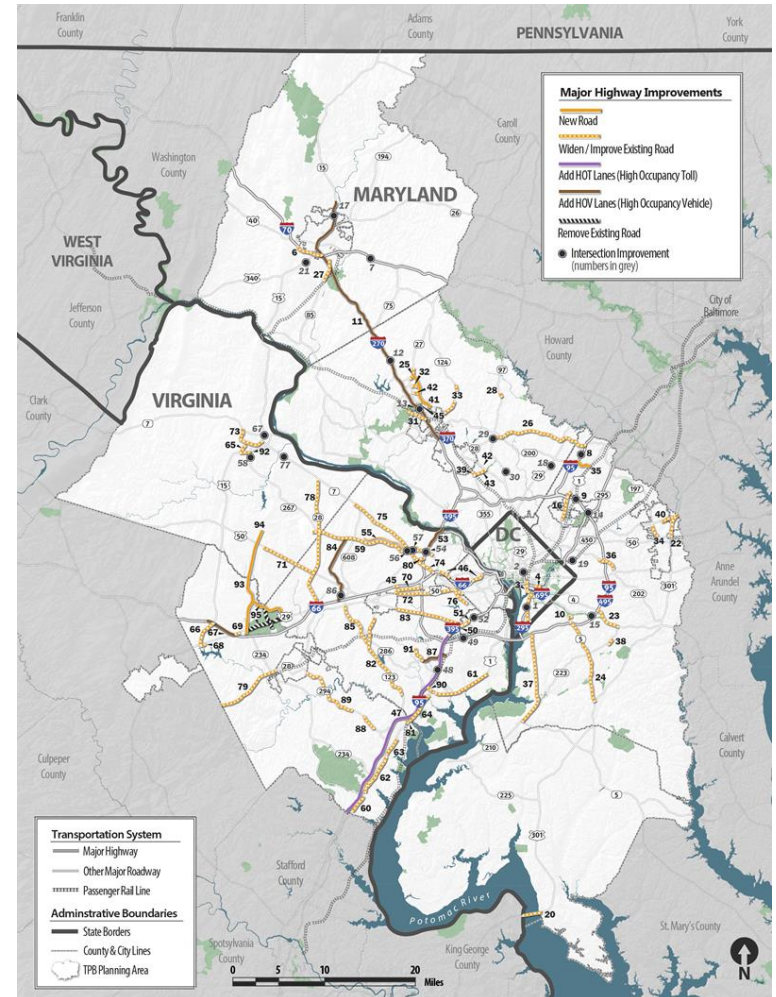


What's Already in the CLRP?

Major Transit Improvements

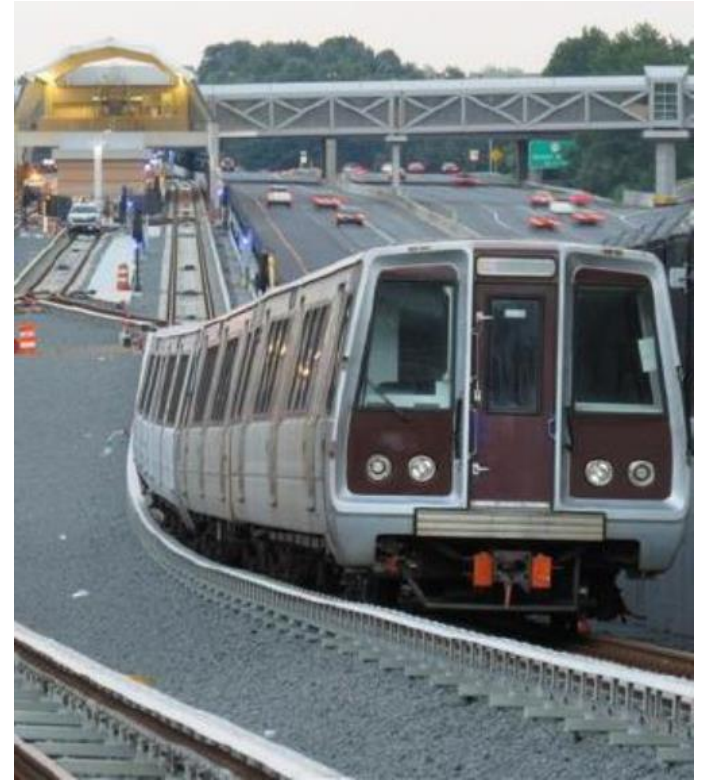


Major Highway Improvements



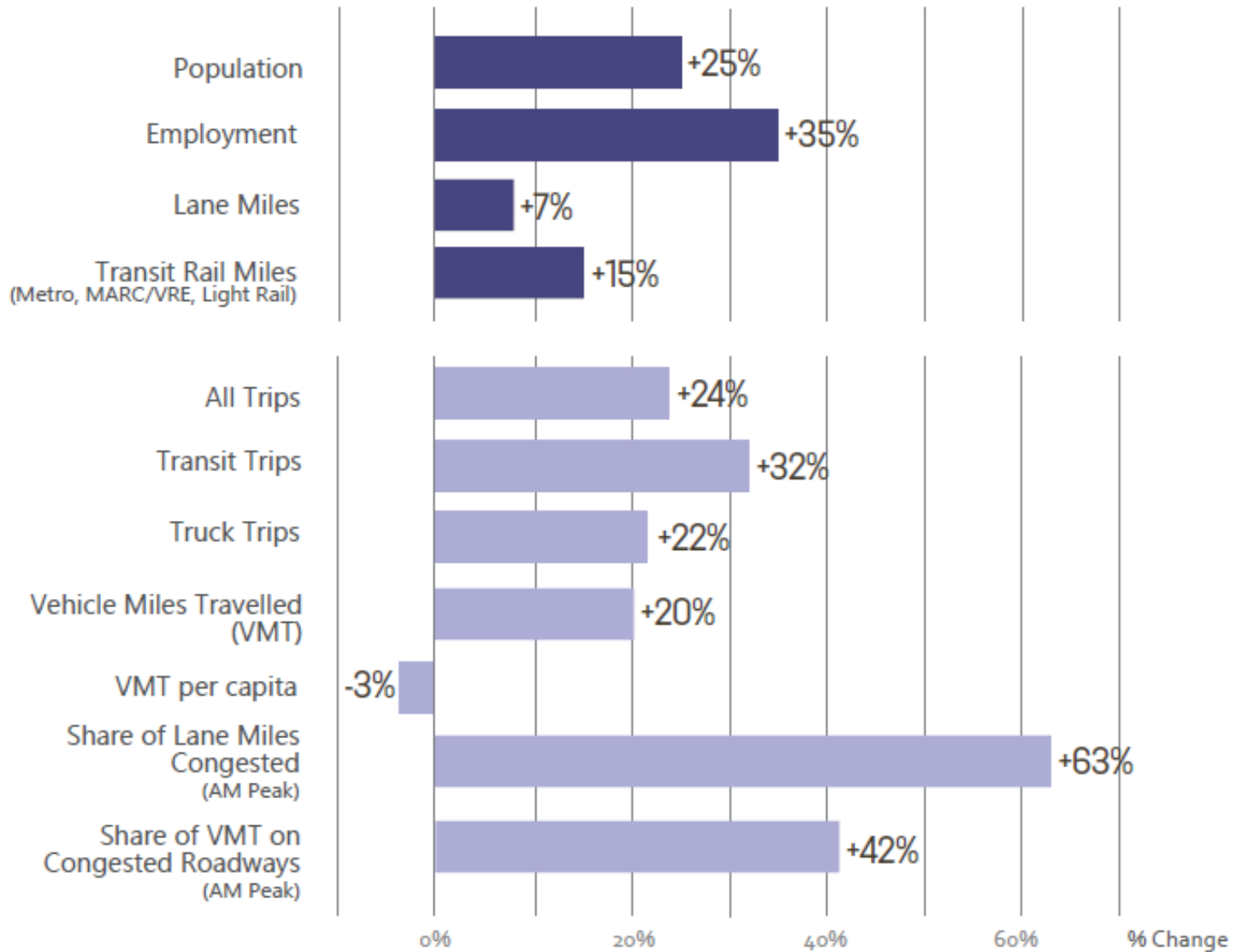
What's Already in the CLRP?

- Silver Line, Phase II
- Corridor Cities Transitway (CCT)
- I-270/US 15 Corridor
- Purple Line
- DC Streetcars
- South Capitol Street Bridge



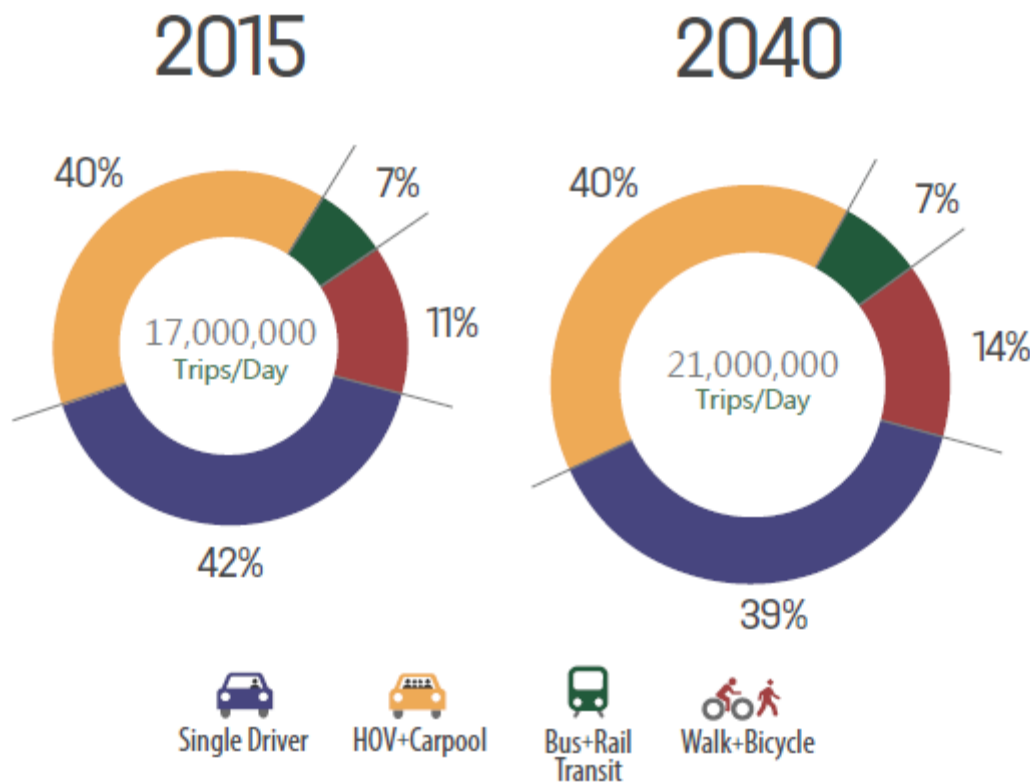
For a complete listing of projects, visit www.mwcog.org/CLRP/projects.

Our Future Under the 2014 CLRP



Our Future Under the 2014 CLRP

Daily Travel – Mode Share and Trips by Mode (2015-2040)



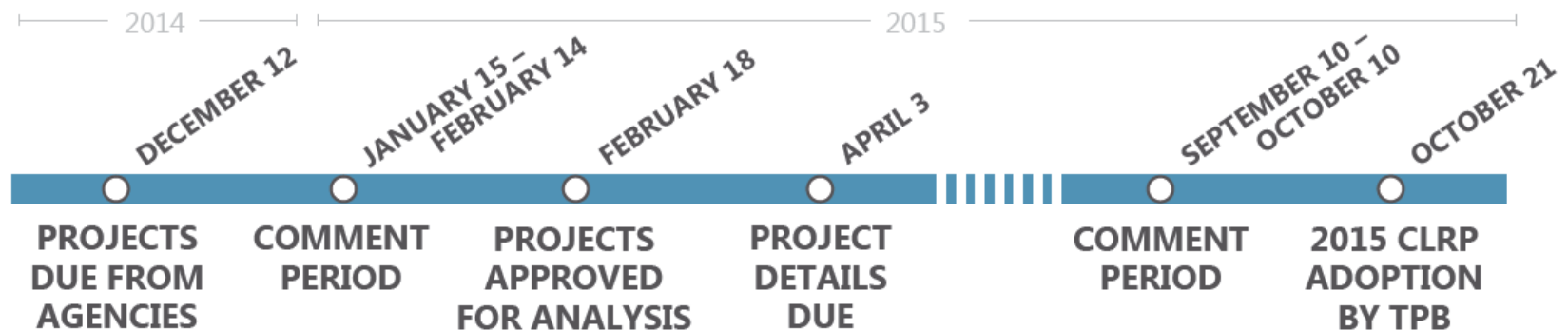
957,000 more trips	Walk+Bicycle	+49% From 2015
372,000 more trips	Transit	+32% From 2015
1,690,000 more trips	HOV+Carpool	+25% From 2015
1,076,000 more trips	Single Driver	+15% From 2015

Find the full results of the 2014 CLRP Performance Analysis at www.mwcog.org/CLRP2014.

2015 CLRP Update

- Six major new projects or changes to existing projects submitted by VDOT and DDOT
- Projects to be approved for Air Quality Conformity Analysis and Performance Analysis on February 18

SCHEDULE FOR DEVELOPMENT & ADOPTION OF THE 2015 CLRP UPDATE



Find the complete 2015 CLRP update schedule at www.mwcog.org/CLRP2015.

2015 CLRP Update: Think Regionally, Act Locally

- 2015 CLRP Call for Projects: “Agencies should consider regional goals, priorities, and needs when developing and selecting projects to submit for inclusion in the CLRP.”
 - **TPB Vision: Goals, Objectives, Strategies**
 - **Regional Priorities: Maintenance, Fairness, Efficiency**
 - **Additional Policy Context**
 - National Capital Region Climate Change Report (2008)
 - Region Forward (2010)
 - CLRP Aspirations Scenario (2010)
 - “What Would It Take?” Scenario Study (2010)

2015 CLRP Update: Think Regionally, Act Locally

THE REGION'S GREATEST NEEDS

- **Reduce congestion on the roadway and/or transit system**
- **Improve the operational efficiency of the existing roadway and/or transit system**
- **Provide high-quality transportation options between and/or within Activity Centers**
- **Reduce vehicle-miles traveled (VMT) per capita**
- **Reduce emissions of criteria pollutants**
- **Reduce emissions of greenhouse gases**
- **Increase use of travel modes other than driving alone**

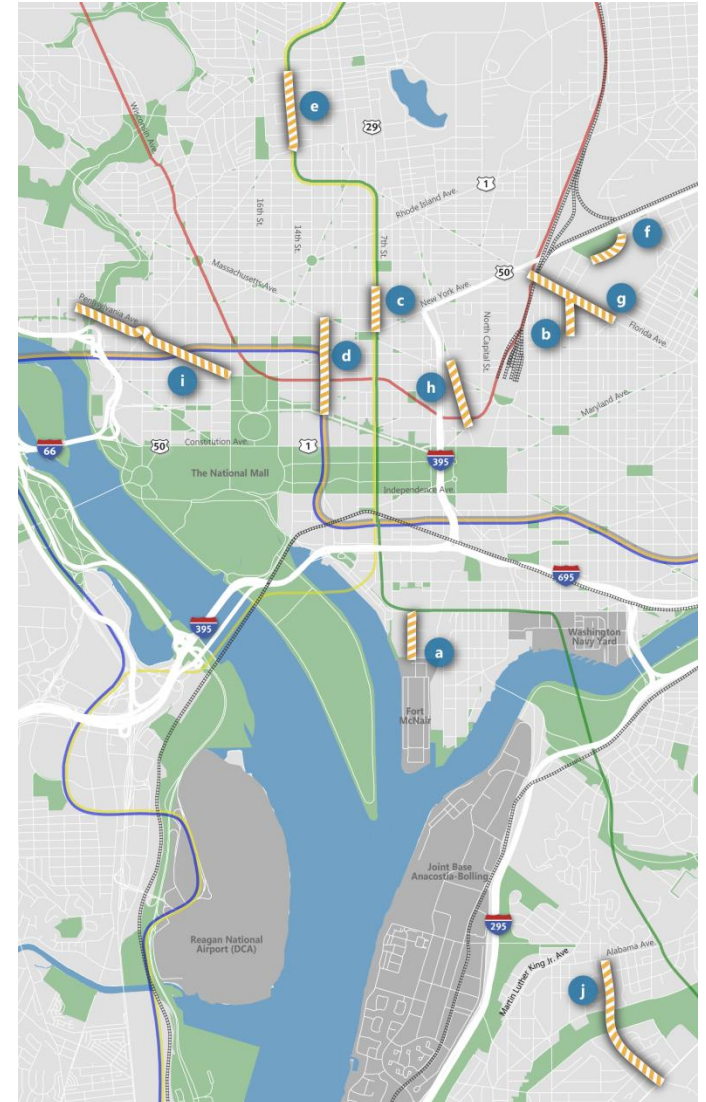
2015 CLRP Update: Additions and Changes

District of Columbia

Dedicated Bike Lanes, Citywide

Length: 9 miles
Complete: 2015
Cost: \$470,000

- a) 4th St. SW, M St. to P St. - 4 to 2 lanes
- b) 6th St. NE, Florida Ave. to K St.- 2 to 1 lane
- c) 7th St. NW, New York Ave. to N St. - 4 to 2 lanes
- d) 12th St. NW, Penn. Ave. to Mass. Ave. - 4 to 3 lanes
- e) 14th St. NW, Florida Ave. to Columbia Rd. - 4 to 2 lanes
- f) Brentwood Pkwy. NE, 6th St./Penn St. to 9th St. - 4 to 2 lanes
- g) Florida Ave. NE, 2nd St. to W. Virginia Ave. - 6 to 4 or 5 lanes
- h) New Jersey Ave. NW, H St. to Louisiana Ave. - 4 to 2 lanes
- i) Pennsylvania Ave. NW, 17th St. to 29th St. - 4/6 to 2 or 4 lanes
- j) Wheeler Rd. SE, Alabama Ave. to Southern Ave. - 4 to 2 lanes



2015 CLRP Update: Additions and Changes

Virginia

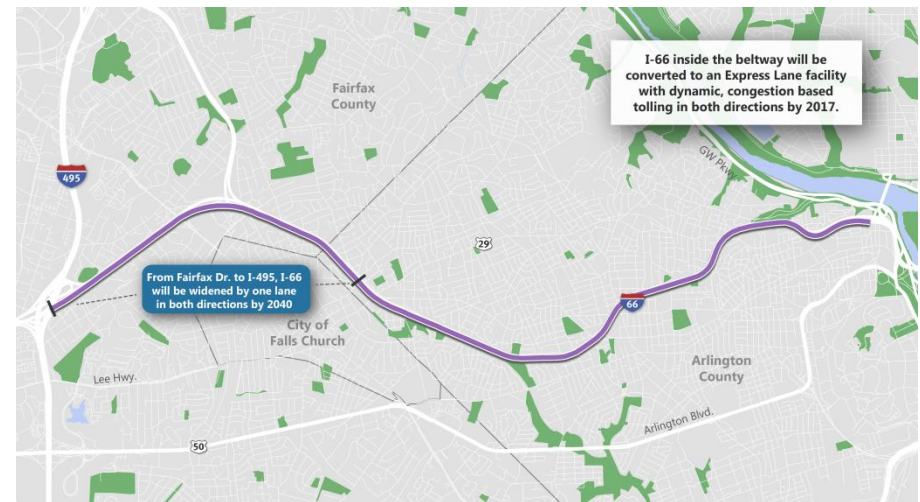
I-66 Corridor Improvements inside the Beltway US Route 29 in Rosslyn to I-495

Length: 10 miles

Complete: 2017 (tolling, multimodal), 2040 (widening)

Cost: \$75-100 million

- Convert I-66 to a managed express lanes facility with dynamic, congestion-based tolling for all vehicles with less than 3 occupants in both directions, during peak periods only by 2017
- Implement enhanced bus service and complete elements of the bicycle and pedestrian network by 2017
- Widen from 2 to 3 lanes in both directions between Fairfax Dr. and I-495 by 2040.

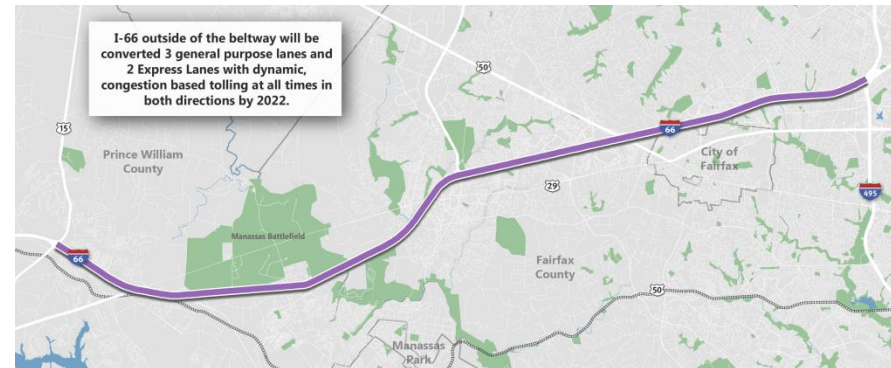


2015 CLRP Update: Additions and Changes

I-66 Corridor Improvements outside the Beltway I-495 to US Route 15 in Prince William County

Length: 25 miles
Complete: 2022
Cost: \$2-3 billion

- Reconfigure I-66 to have 2 managed express lanes and 3 general purpose lanes in each direction.
- Express lanes use dynamic, congestion-based tolling for vehicles with less than 3 occupants at all times to maintain free-flow conditions
- New high-frequency bus service and construction of new or expanded commuter park-and-ride lots
- Two alternatives for access and egress points between the general purpose and express lanes will be analyzed separately



2015 CLRP Update: Additions and Changes

Project Removals

District of Columbia

- Benning Road Streetcar Spur
from Benning Rd., to Minnesota Ave. Metro Station
 - In CLRP since 2014

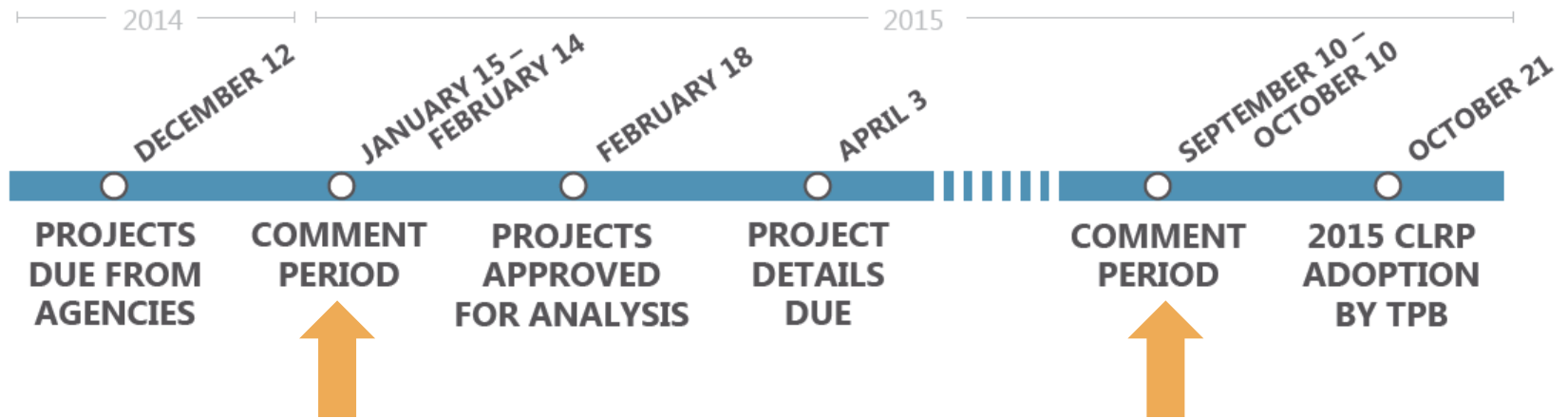
Virginia

- Columbia Pike Streetcar
from Skyline Center to Pentagon City
 - In CLRP since 2008
- Crystal City Streetcar
from Pentagon City Metro Station to Four Mile Run/Alexandria City Line
 - In CLRP since 2011

2015 CLRP Update: Additions and Changes

For complete project descriptions, including information from agencies about how the projects they submit help support or advance regional goals, priorities, and needs, visit www.mwcog.org/CLRP2015.

Comment on Additions and Changes



Comment on additions and changes to projects

Comment on draft plan and analysis results

Comment on Additions and Changes

- Find all documents available for public comment at www.mwcog.org/TPBcomment.
- Submit comments:
 - On the web at www.mwcog.org/TPBcomment
 - By email at TPBcomment@mwkog.org

- **In writing:**

Chairman Phil Mendelson
National Capital Region Transportation Planning Board
777 North Capitol Street, NE Suite 300
Washington, DC 20002-4239

- **Deadline is February 14, 2015.**

Getting the Word Out

- E-mail blast to TPB stakeholders and subscribers
- Ads placed in The Washington Post, Afro-American, and Washington Hispanic
- Featured in TPB Weekly Report and TPB News
- Outreach via Facebook and Twitter