

**WRAP** Washington Regional  
Alcohol Program

# How Safe Are Our Roads?

**Annual Data Report on the Impact of Drunk Driving on  
Road Safety in the Washington D.C. Metropolitan Region**

**December 2007**

**Prepared by the  
Metropolitan Washington Council of Governments**



# How Safe Are Our Roads?

Annual Data Report on the Impact of Drunk Driving on  
Road Safety in the Washington D.C. Metropolitan Region

**December 2007**

## **Washington Regional Alcohol Program**

1420 Spring Hill Road, Suite 250  
McLean, VA 22102  
(703) 893-0461  
[www.wrap.org](http://www.wrap.org)

Prepared by

## **Metropolitan Washington Council of Governments**

777 North Capitol Street, NE  
Washington D.C. 20002  
(202) 962-3200  
[www.mwcog.org](http://www.mwcog.org)

# TABLE OF CONTENTS

|  |           |
|--|-----------|
| <b>Executive Summary .....</b>   | <b>1</b>  |
| <b>A National and State Perspective .....</b>  | <b>3</b>  |
| <b>The Washington D.C. Metropolitan Region .....</b>   | <b>5</b>  |
| Figure 1:    Map of Washington Metro region .....  | 5         |
| <b>Methodology .....</b>   | <b>6</b>  |
| <b>Population Census Data .....</b>  | <b>9</b>  |
| Table 1:    Total Estimated Population by Jurisdiction, as of July 2000-2006 .....   | 10        |
| <b>Traffic Fatalities, Overall and Alcohol-related .....</b>   | <b>11</b> |
| Table 2:    Alcohol-related Traffic Fatalities by Jurisdiction, 1996-2006.....   | 14        |
| Table 3:    Total Traffic Fatalities by Jurisdiction, 1996-2006 .....  | 15        |
| Figure 2:    Number of Alcohol-related Traffic Fatalities Over Time, By Region,<br>1996-2006 .....                             | 16        |
| Figure 3:    Total Number of Motor Vehicle Fatalities Over Time, By Region,<br>1996-2006 .....                                 | 16        |
| Table 4:    Percentage of All Traffic Fatalities that were Alcohol-related<br>by Jurisdiction, 1996-2006 .....                 | 17        |
| Figure 4:    Percentage of Total Fatalities Due to Crashes Involving Impaired Drivers<br>Over Time, By Region, 1996-2006 ..... | 18        |
| Table 5A:    SNAPSHOT! Motor Vehicle Fatalities in 2006 .....  | 19        |
| Figure 5A.1: SNAPSHOT! Number of Total and Alcohol-related Motor Vehicle<br>Fatalities, By Region, 2006 .....                  | 20        |
| Figure 5A.2: SNAPSHOT! Percentage of Fatalities: Alcohol-related and<br>Change 2002-2006 .....                                 | 20        |
| Table 5B:    SNAPSHOT! Motor Vehicle Fatalities for Persons Under 21 Years of Age<br>by Jurisdiction, 2006 .....               | 21        |

**Traffic Crashes, Overall and Alcohol-related ..... 22**

Table 6: Alcohol-related Traffic Crashes by Jurisdiction, 1996-2006..... 25

Table 7: Total Traffic Crashes by Jurisdiction, 1996-2006 ..... 26

Figure 6: Number of Alcohol-related Traffic Crashes Over Time, By Region, 1996-2006 ..... 27

Figure 7: Total Number of Motor Vehicle Crashes Over Time, By Region, 1996-2006 ..... 27

Table 8: Percentage of All Traffic Crashes that were Alcohol-related, 1996-2006..... 28

Figure 8: Percentage of Total Crashes Due to Crashes Involving Impaired Drivers Over Time, By Region, 1996-2006 ..... 28

Table 9: SNAPSHOT! Motor Vehicle Crashes in 2006 ..... 29

Figure 9A: SNAPSHOT! Number of Total and Alcohol-related Motor Vehicle Crashes, By Region, 2006..... 30

Figure 9B: SNAPSHOT! Percentage of Crashes: Alcohol-related and Change 2002-2006 ..... 30

**Traffic Injuries, Overall and Alcohol-related ..... 31**

Table 10: Alcohol-related Traffic Injuries by Jurisdiction, 1999-2006..... 33

Table 11: Total Traffic Injuries by Jurisdiction, 1999-2006..... 34

Figure 10: Number of Alcohol-related Traffic Injuries Over Time, By Region, 1999-2006 ..... 35

Figure 11: Total Number of Motor Vehicle Injuries Over Time, By Region, 1999-2006 ..... 35

Table 12: Percentage of All Traffic Injuries that were Alcohol-related, 1999-2006 ..... 36

Figure 12: Percentage of Total Injuries Due to Crashes Involving Impaired Drivers Over Time, By Region, 1999-2006 ..... 36

Table 13: SNAPSHOT! Motor Vehicle Injuries in 2006 ..... 37

Figure 13A: SNAPSHOT! Number of Total and Alcohol-related Motor Vehicle Injuries, By Region, 2006..... 38

Figure 13B: SNAPSHOT! Percentage of Injuries: Alcohol-related and Change 2002-2006 ..... 38

**Traffic Arrests, Alcohol-related ..... 39**

Table 14: Total Alcohol-related Driving Arrests by Jurisdiction, 1994-2006 ..... 41

Figure 14: Total Alcohol-related Arrests, All Ages, By Region, 1994-2006 ..... 42

Table 15: Total Alcohol-related Driving Arrests of Juveniles and Adults By Jurisdiction, 1999-2006 ..... 43

|   |           |
|---|-----------|
| <b>Impact on Our Youth .....</b>  | <b>44</b> |
| Table 16: Motor Vehicle Fatalities for Persons Under 21 Years of Age, 2002-2006.....  | 45        |
| Table 17: Alcohol-related Motor Vehicle Injuries for Persons Under 21 Years of Age, 2002-2006 .....                                   | 46        |
| Table 18: Alcohol-related Motor Vehicle Arrests for Persons Under 21 Years of Age By Region, 2002-2006 .....                          | 47        |
| Table 19A: SNAPSHOT! Motor Vehicle Fatalities for Persons Under 21 Years of Age, 2006.....  | 48        |
| Table 19B: SNAPSHOT! Alcohol-related Crashes, Injuries, and Arrests for Persons Under 21 Years of Age, 2006.....                      | 49        |
| <br>  |           |
| <b>Summary.....</b>   | <b>50</b> |
| Table 20: Washington Metro region Percentage Change in Alcohol-related Incidents by Year, 1996-2006.....                              | 50        |
| Figure 20: Washington Metro region Percentage Change in Alcohol-related Incidents by Year, 1996-2006.....                             | 50        |
| Table 21: District of Columbia Percentage Change in Alcohol-related Incidents by Year, 1996-2006.....                                 | 51        |
| Figure 21: District of Columbia Percentage Change in Alcohol-related Incidents by Year, 1996-2006.....                                | 51        |
| Table 22: Montgomery and Prince George’s Counties, Maryland, Percentage Change in Alcohol-related Incidents by Year, 1996-2006 .....  | 52        |
| Figure 22: Montgomery and Prince George’s Counties, Maryland, Percentage Change in Alcohol-related Incidents by Year, 1996-2006 ..... | 52        |
| Table 23: Northern Virginia Percentage Change in Alcohol-related Incidents by Year, 1996-2006.....                                    | 53        |
| Figure 23: Northern Virginia Percentage Change in Alcohol-related Incidents by Year, 1996-2006.....                                   | 53        |
| <br>  |           |
| <b>Final Comments .....</b>   | <b>54</b> |
| <br>  |           |
| <b>Acknowledgements.....</b>  | <b>55</b> |
| <br>  |           |
| <b>Definition of Terms .....</b>  | <b>56</b> |

## EXECUTIVE SUMMARY

Efforts are underway nationwide to curb alcohol-related motor vehicle crashes, injuries, and fatalities. The Washington Metro region is no exception. The Washington Regional Alcohol Program has once again commissioned *How Safe Are Our Roads?* to provide insight into the progress made in 2006. Data are presented on alcohol and non-alcohol traffic related fatalities, crashes, and injuries within the Washington-metropolitan area. For purposes of this report, any data that refer to “total” or “all” indicate people of all ages, i.e. both adults and juveniles.

### 2006 Overview

- The total number of alcohol-related crashes and fatalities in the Washington Metro region showed a moderate increase of 18.4% for crashes and 31.5% for fatalities in 2006 compared to 2005.
- However, 13.3% percent of juvenile traffic fatalities in 2006 were alcohol-related; about half the percentage in 2005 (26.5%).
- The percentage of all alcohol-related fatalities increased from 25.4% in 2005 to 32.3% in 2006.
- The Washington Metro region saw a decrease of 2.5% in the number of alcohol-related driving arrests in 2006.

### 2006 Traffic Fatalities

- The Washington Metro region saw a 31.5% increase in alcohol-related fatalities, though there were significant differences within the region; the District of Columbia reported a moderate decrease in alcohol-related fatalities (-16.7%), while Maryland reported a moderate increase (+14.6%) and the Virginia Region reported a dramatic increase of 103.7%.
- The percentage of alcohol-related traffic fatalities increased to 32.3% in 2006.
- The Washington Metro region continues to experience a lower percentage of alcohol-related motor vehicle fatalities than the nation (32.3% vs. 41.3% nationally).
- Total motor vehicle fatalities were up in 2006 in the region (+3.1%) and down in the nation (-2%)

## **2006 Traffic Crashes**

- The number of alcohol-related driving crashes in the Washington Metropolitan region increased in 2006, reversing two years of decreases. This year's increase was 18.4%.
- The percentage of alcohol-related crashes in the Washington Metro region was 6.2% in 2006, indicating a slight increase from 2005 (5.2%).
- The District of Columbia saw a decrease in the number of crashes (-7.0%), but a dramatic increase in alcohol-related crashes (75.5%).
- Six of the ten jurisdictions in Northern Virginia posted significant increases (20% to 1000%) in alcohol-related crashes.

## **2006 Traffic Injuries**

- Total regional traffic injuries were up in 2006 by 9% compared to 2005. The District of Columbia and Maryland saw declines of 14.8% and 2.4% respectively, while Northern Virginia reported an increase of 30.7%.
- Alcohol-related injuries are difficult to compare 2006 to 2005 because data for 2005 was not available for the District of Columbia. In the part of the region that can be compared, the number of alcohol-related injuries increased by 29.1%. Maryland reported a 6.1% increase in alcohol-related driving injuries; however, Virginia reported a significant increase of 47.5% in alcohol-related driving injuries.

## **2006 Alcohol-Related Traffic Arrests**

- The Washington Metro region did report a slight decrease in the number of impaired driving arrests (-2.5%).
- Arlington County, VA and Falls Church, VA saw the biggest percentage increase in arrest rates (19.9% and 58.8% respectively).

## **Impact on Our Youth**

- In 2006 13.3% percent of juvenile fatalities were alcohol-related, half of the percentage in 2005 (26.5%).
- In 2006, 6.8% of all alcohol-related motor vehicle fatalities involved people under 21 years of age. Alcohol-related fatalities represented 13.3% of all juvenile traffic fatalities – down from 2005.
- Alcohol-related injuries (306) in 2006 in the Washington Metro region involving youth under the age of 21 were 0.9% higher than reported in 2005 (303).

## A NATIONAL AND STATE PERSPECTIVE

Traffic safety continues to be a local and national concern. Alcohol-related crashes, injuries, and fatalities are so designated if at least one driver or non-occupant (pedestrian or cyclist) involved is determined to have a Blood Alcohol Concentration (BAC) of 0.01 g/dl or higher. Despite concerted efforts at local, state, and national levels to stabilize incidences of alcohol-related injuries and fatalities, 17,602 people died in alcohol-related traffic incidents in 2006 alone; there is plenty of work to be done.

### Fatalities

---

“Alcohol-related crashes kill someone every 31 minutes and non-fatally injure someone every two minutes”

*National Highway  
Traffic Safety  
Administration*

---

- Motor vehicle crashes are the leading cause of death for persons between the ages of 3 and 33 years.
- About 3 in every 10 Americans will be involved in an alcohol-related crash at some time in their lives. (NHTSA, 2001).
- Each year, alcohol-related crashes in the United States cost about \$51 billion (Blincoe, 2002).
- In 2004, about 1.4 million drivers were arrested for driving under the influence of alcohol or narcotics (Department of Justice, 2004); that’s less than one percent of the 159 million self-reported episodes of alcohol-impaired driving among U.S. adults each year (Quinlan et al. 2005).
- Nationwide, fatalities in alcohol-related crashes increased by 0.1%.
- The total number of alcohol-related fatalities has increased to 17,602 in 2006. Of those, 15,121 occurred in crashes where the highest BAC was .08 or above. (NHTSA 2007).
- The rate of fatalities per vehicle miles of travel (VMT) remained flat in 2006 at 0.45 fatalities per 100 million VMT. (NHTSA 2007).



## Crashes, Injuries and Arrests

Alcohol use continues to significantly impact the safety of our roads. These statistics demonstrate the continued severity of the problem:

---

“About three in every ten Americans will be involved in an alcohol-related crash at some time in their lives.”

*National Highway  
Traffic Safety  
Administration*

---

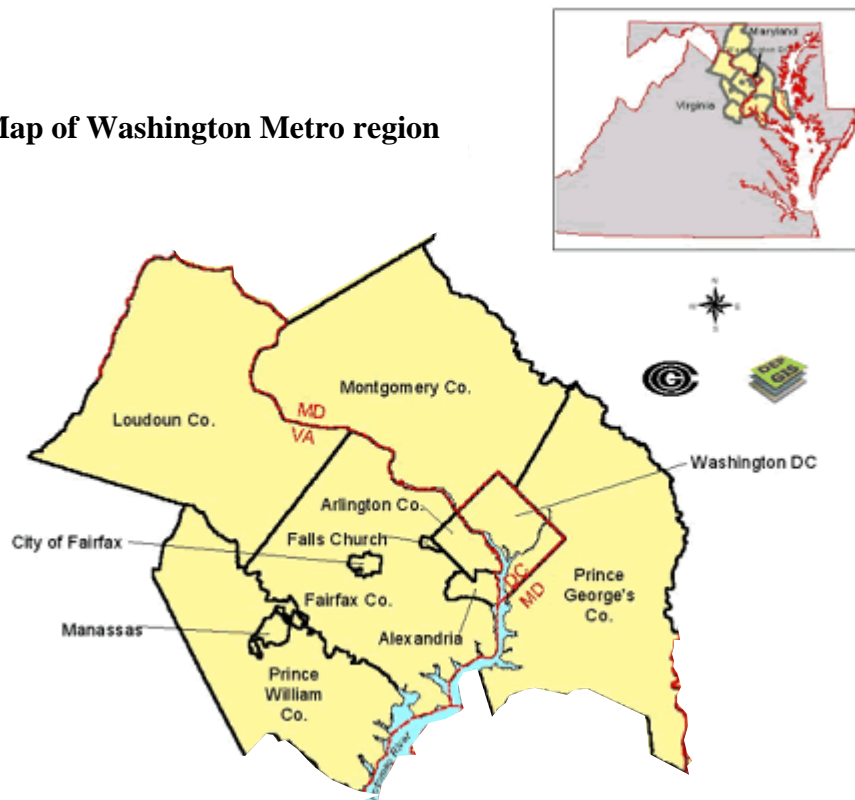
- Alcohol is a major factor in traffic crashes. Crashes involving alcohol are more likely to result in injuries and deaths than crashes where alcohol is not a factor.
- Alcohol-related motor vehicle crashes injure someone every two minutes (and kill someone every 31 minutes).
- More than 1.4 million people nationwide were arrested in 2004 for driving under the influence (Federal Bureau of Investigation’s Uniform Crime Report).
- The number of arrests is small in comparison to the number of self-reported alcohol-impaired driving trips, which nationally was more than 159 million (University of Chicago).
- One-third of all DUI arrestees are repeat offenders.

## THE WASHINGTON D.C. METROPOLITAN REGION

For the purposes of this report, “Washington Metro region” consists of the following twelve jurisdictions:

- District of Columbia
- Maryland Counties
  - Prince George’s County
  - Montgomery County
- Northern Virginia Counties & Cities
  - Arlington County
  - Fairfax County
  - Loudoun County
  - Prince William County
  - City of Alexandria
  - City of Fairfax
  - City of Falls Church
  - City of Manassas
  - City of Manassas Park

**Figure 1: Map of Washington Metro region**



## METHODOLOGY

### Data Sources

Data compiled in this report comes from national, state, and local sources. Secondary sources include the U.S. Census Bureau, National Highway Traffic Safety Administration (NHTSA), and Virginia and Maryland Departments of Transportation. Primary data was collected from the local police departments of each jurisdiction.

It should be noted that the jurisdictional data in this report does not always include State Police data. The State Police in Maryland and Virginia are charged with enforcing traffic laws on state highways and interstate expressways; inclusion of this data would likely increase the number of incidents in all categories. Two exceptions to this are Prince George's County, Maryland which does include State Police data in its reporting, and Fairfax County Virginia which includes State Police data in the reporting of fatalities only. Even given these qualifiers, it is possible that some jurisdictional data may include State Police figures because local police often respond to highway incidents when State Police are unavailable. In some jurisdictions the data reported were provided by local police departments, which most likely include state police data.

Adapted from a map created by Metropolitan Washington Council of Governments, Washington, DC on July 14, 1999.

Following is a listing of the agencies providing local jurisdictional data:

- District of Columbia:
  - o Metropolitan Police Department
  - o U.S. Park Police
- Maryland
  - o State of Maryland: Maryland State Police
  - o Prince George's County Police Department
  - o Montgomery County Department of Police
- Virginia
  - o State of Virginia: Virginia Department of Motor Vehicles, 2006 Crash Facts
  - o Arlington County Police Department
  - o Fairfax County Police Department
  - o Loudoun County Sheriff's Office
  - o Prince William County Police Department
  - o City of Alexandria Police Department
  - o City of Fairfax Police Department
  - o City of Falls Church Police Department
  - o City of Manassas Police Department
  - o City of Manassas Park Police Department

## **Data Analysis**

The findings in this report are based on data collected from organizations and agencies from across the Washington Metro region. Data tables provide totals within the Washington Metro region as well as individual jurisdictions. Analysis focuses on changes in motor vehicle fatalities, injuries, crashes, and arrests. Results are reported as numbers and percentage of alcohol-related incidents to total numbers across time.

## **Data Limitations**

It is important to note limitations that affected collection and analysis of this data, as they may limit comparability across jurisdictions and influence the level of reasonable analysis. Whenever possible, limitations are noted within the tables and figures. It is important that the reader keep the following in mind:

- It should be noted that Montgomery County, Maryland has recently changed and enhanced their database system. While these changes allow them to capture data more accurately, comparisons to previous year's data should be made with caution. In addition, because this report tracks just two jurisdictions in Maryland, regional totals could also be affected.
- There is no standardization for data definitions, collection, or recording within the Washington Metro region. Each agency has its own system of data collection, coding, and management. In addition, the range and type of data collected may not be consistent across jurisdictions. The data reported and analyzed in this report reflect data as reported by contact agencies. Independent verification of data to ensure accuracy is not within the scope of this report.
- Information on data collection and management systems and changes within jurisdictions was not solicited. In addition, changes in laws or judicial priorities may result in increased attention to specific data (e.g. blood alcohol level in driver fatalities related to stricter server laws). In some cases, this may result in missing data or data that appears inconsistent when examined against the same values for previous years. It is beyond the scope of this report to identify data methodology or priority changes for each jurisdiction.
- Data on impaired driver involvement in motor vehicle fatalities, injuries, crashes and arrests was requested for alcohol-impairment only. Therefore, data are assumed to reflect only alcohol impairment and are reported in this way.
- The number of incidents, total and related to alcohol impairment, is very small for some jurisdictions. Due to the small numbers, jurisdictional analysis might easily misrepresent the problem. For example, an increase of one alcohol-related fatality would have little impact in a jurisdiction that saw 50 alcohol-related fatalities the previous year, but would appear to represent a significant change in a small jurisdiction with only one or two alcohol-related fatalities the previous year.
- Data are reported and analyzed by absolute numbers only. At this time, information that would allow identification of comparable rates is unavailable. It is assumed that

people involved in motor vehicle crashes and arrests may live within or outside the Washington Metro region. Collection of data on driver or passenger residence versus jurisdiction of accident is beyond the scope of this report. Calculating rates based on the Washington Metro region's population or number of licensed drivers would not accurately represent the problem since drivers may be from outside the jurisdiction.

- Data on people under the age of 21 years is collected in an inconsistent manner among jurisdictions. Caution must be used in evaluation of this data due to varied definitions and missing data.
- Many charts display two regional total numbers. The first, "DC Regional Total" is the total of the District of Columbia, the Maryland Region, and the Northern Virginia Region. The second regional number, "Regional Total Adjusted" includes data from the United States Park Police. Because the Park Police information has only been recently collected, it is shown separately and the two regional totals are shown so that comparisons with previous years can be done.

## **POPULATION CENSUS DATA**

Population data was obtained from the U.S. Census Bureau Population Division. Jurisdictional population figures are provided as of July 1 of each year reported.

The Washington Metro region's population rose by 2.6% over the past year. The State of Maryland's population showed only a slight increase of 2.2%, similar to the State of Virginia's increase of 2.3% with national totals showing a 1% increase. The local jurisdiction with the largest increase in population is Manassas Park, VA (19.6%) compared to a 2.3% increase for Northern Virginia as a whole. The District of Columbia showed an increase in population of 6% over the past year.

The impact of changing population on motor vehicle crashes and arrests is not clear from the data obtained for this report. The location of residence, employment, and social venues continues to drive daily commutes. Growth of employment in the suburban regions, opening of suburban shopping and eating venues, and expansion of commuter options via bus or rail may significantly impact the movement of people in the region. Evaluation of the impact of these components on regional volume of motor vehicle traffic is beyond the scope of this report.

**Table 1: Total Estimated Population by Jurisdiction, as of July, 2000-2004**

|                                | 2000               | 2001               | 2002               | 2003               | 2004               | 2005               | 2006               | Percent Change in Population 2005-2006 | Percent Change in Population 2000-2006 |
|--------------------------------|--------------------|--------------------|--------------------|--------------------|--------------------|--------------------|--------------------|--|--|
| <b>District of Columbia</b>    | <b>571,437</b>     | <b>572,716</b>     | <b>569,157</b>     | <b>563,384</b>     | <b>553,523</b>     | <b>550,521</b>     | <b>581,500</b>     | <b>6%</b>                              | 1.8%                                   |
| Maryland                       |                    |                    |                    |                    |                    |                    |                    |  |  |
| State Total                    | 5,311,531          | 5,383,377          | 5,450,525          | 5,508,909          | 5,558,058          | 5,600,388          | 5,615,727          | 0.3%                                   | 5.7%                                   |
| Montgomery County              | 877,781            | 894,449            | 908,831            | 918,881            | 921,690            | 927,583            | 952,000            | 2.6%                                   | 8.5%                                   |
| Prince George's County         | 803,649            | 818,119            | 829,372            | 838,716            | 842,967            | 846,123            | 860,300            | 1.7%                                   | 7.0%                                   |
| <b>MD Regional Total</b>       | <b>1,681,430</b>   | <b>1,712,568</b>   | <b>1,738,203</b>   | <b>1,757,597</b>   | <b>1,764,657</b>   | <b>1,773,706</b>   | <b>1,812,300</b>   | <b>2.2%</b>                            | 7.8%                                   |
| Virginia                       |                    |                    |                    |                    |                    |                    |                    |  |  |
| State Total                    | 7,104,033          | 7,185,522          | 7,273,572          | 7,365,284          | 7,459,827          | 7,567,465          | 7,642,884          | 1.0%                                   | 7.6%                                   |
| Arlington County               | 189,323            | 189,661            | 189,090            | 187,873            | 186,117            | 195,965            | 201,000            | 2.6%                                   | 6.2%                                   |
| Fairfax County                 | 975,304            | 987,030            | 994,121            | 1,000,405          | 1,003,157          | 1,006,529          | 1,010,400          | 0.4%                                   | 3.6%                                   |
| Loudoun County                 | 173,940            | 190,134            | 204,042            | 221,746            | 239,156            | 255,518            | 263,000            | 2.9%                                   | 51.2%                                  |
| Prince William County          | 283,837            | 298,135            | 311,630            | 325,324            | 336,586            | 348,588            | 371,200            | 6.5%                                   | 30.8%                                  |
| City of Alexandria             | 127,147            | 130,403            | 129,938            | 128,923            | 128,206            | 135,337            | 138,300            | 2.2%                                   | 8.8%                                   |
| City of Fairfax                | 21,581             | 21,853             | 21,905             | 22,031             | 22,062             | 21,963             | 22,500             | 2.4%                                   | 4.3%                                   |
| City of Falls Church           | 10,439             | 10,561             | 10,602             | 10,485             | 10,781             | 10,781             | 11,100             | 3.0%                                   | 6.3%                                   |
| City of Manassas               | 35,392             | 35,887             | 36,726             | 37,166             | 37,615             | 37,569             | 38,100             | 1.4%                                   | 7.7%                                   |
| City of Manassas Park          | 10,333             | 10,757             | 10,924             | 10,990             | 11,519             | 11,622             | 13,900             | 19.6%                                  | 34.5%                                  |
| <b>Northern Virginia</b>       | <b>1,827,296</b>   | <b>1,874,421</b>   | <b>1,908,978</b>   | <b>1,944,943</b>   | <b>1,975,199</b>   | <b>2,023,872</b>   | <b>2,069,500</b>   | <b>2.3%</b>                            | 13.3%                                  |
| <b>DC Metro Regional Total</b> | <b>4,080,163</b>   | <b>4,159,705</b>   | <b>4,216,338</b>   | <b>4,265,924</b>   | <b>4,293,379</b>   | <b>4,348,099</b>   | <b>4,463,300</b>   | <b>2.6%</b>                            | 9.4%                                   |
| <b>National</b>                | <b>282,192,162</b> | <b>185,102,075</b> | <b>287,941,220</b> | <b>290,788,976</b> | <b>293,655,404</b> | <b>296,410,404</b> | <b>299,398,884</b> | <b>1.0%</b>                            | 6.1%                                   |

Data Source: Annual Estimates of the population, Population Division, U.S. Census Bureau.

## **TRAFFIC FATALITIES, OVERALL AND ALCOHOL-RELATED**

### **National Comparison**

Over the past year, the total number of traffic fatalities nationwide decreased slightly while the percentage of fatalities in alcohol-related crashes increased slightly (0.1%). In 2006, compared to 2005, alcohol-related fatalities increased 0.1% while all traffic fatalities decreased by 2%. Twelve more people died in 2006 from alcohol-related crashes than in 2005 (17,602 vs.17,590).

Nationally, the percentage of alcohol-related traffic fatalities rose slightly (0.9%) from 2005 (40.4%) to 2006 (41.3 %).

### **State Comparisons**

#### *Maryland*

The state of Maryland saw the percentage of alcohol-related motor vehicle fatalities in the metro region slightly increase from 23.8% in 2005 to 28% in 2006, which is lower than the national average of 41.3%. State-wide total traffic fatalities increased 6%, and alcohol-related fatalities increased 14%.

It should be noted that Montgomery County has recently changed and enhanced their database system. While these changes allow them to capture data more accurately, comparisons to previous years' data should be made with caution. In addition, because this report tracks just two jurisdictions in Maryland, regional totals could also be affected.

#### *Virginia*

The Commonwealth of Virginia saw a moderate state-wide decrease of 15.8% in total traffic fatalities in 2006, going from 947 in 2005 to 797 in 2006. Alcohol-related fatalities also decreased moderately by 11.5% since 2005. Northern Virginia alcohol-related fatalities more than doubled, making up 39% of the total fatalities in the region. State-wide the percentage of alcohol-related fatalities increased slightly from 36.6% in 2005 to 38.5% in 2006 which is slightly below the national percentage of 41.3%.



## Washington Metro Region

Despite the reduction of alcohol-related fatalities in some parts of the National Capitol Region, alcohol continues to be a significant factor in motor vehicle fatalities.

The Washington Metro region saw an overall slight increase in motor vehicle accident fatalities of 3.1% compared to 2005, but a significant increase in alcohol-related fatalities to 31.5% since last year. The percentage of alcohol-related fatalities rose slightly from 25.4% in 2005 to 32.3% in 2006.

---

The percentage of traffic fatalities related to alcohol rose slightly in the Washington Metro region

---

Alcohol-related fatalities have increased by 13.6% compared to 1996 in the Washington Metro Region. Total motor vehicle fatalities increased by 11.1% since 1996. The percentage of alcohol-related traffic fatalities has varied from a low of 25.4% in 1998 to a high of 37.4% in 2004.

## Regional Jurisdictions

### *District of Columbia*

In 2006, the District of Columbia saw moderate decreases in both motor vehicle fatalities (-16.3%) and in alcohol-related traffic fatalities (-16.7%).

---

36.6% of traffic fatalities in the District of Columbia were related to alcohol.

---

In the District of Columbia, the number of alcohol-related traffic fatalities decreased from 18 in 2005 to 15 in 2006. 36.6% of all traffic fatalities were related to alcohol use in 2006; a marked decrease from 2004 which saw a high of 75.6%. Since 1996, alcohol-related fatalities have increased by 87.5%, while total traffic fatalities have decreased by 36.9% over the same period.

*Montgomery and Prince George's Counties, Maryland*

The total number of traffic fatalities in 2006 increased in Montgomery County by 50% while Prince George's County saw a decrease 17.2%. Montgomery County saw an 88.9% increase in alcohol-related fatalities compared to 2005, while Prince George's County had a slight (-6.3%) decline in alcohol-related fatalities. Montgomery County's increase in alcohol-related traffic fatalities is dramatically higher than that of the nation, which rose by 0.1% compared to last year.

---

The Maryland & Virginia regions both saw increases in alcohol-related fatalities in 2006.

---

The Maryland region saw a slight decrease in overall traffic fatalities from 2005 to 2006 (-2.3%); however, alcohol-related fatalities increased by 14.6% in the metro region of Maryland. The two counties in the Maryland region saw the percentage of motor vehicle fatalities reported to be alcohol-related increase slightly from 23.8% in 2005 to 28% in 2006. In comparison, the percent of fatalities related to alcohol nationally stands at 41.3% for 2006.

*Northern Virginia*

Northern Virginia saw fatalities related to alcohol increase significantly by 103.7%, which was significantly greater than the national increase of 0.1%. The percentage of alcohol-related fatalities increased notably from 23.5% in 2005 to 39.0% in 2006. Northern Virginia's percentage of alcohol-related fatalities is below the national percentage of 41.3%. The Northern Virginia region saw an increase in total traffic fatalities in 2006 (+22.6%) over last year.

Within Northern Virginia, Prince William County saw the most significant increase in total traffic fatalities, from 23 in 2005 to 46 in 2006, and a significant increase in alcohol-related fatalities (from 4 in 2005 to 22 in 2006). In Virginia, the Cities of Alexandria, Falls Church, Manassas and Manassas Park, reported no alcohol-related fatalities.

**Table 2: Alcohol Related Traffic Fatalities by Jurisdiction, 1996-2006**

|                                 | 1996        | 1997      | 1998      | 1999      | 2000      | 2001       | 2002       | 2003       | 2004       | 2005      | 2006       | Percent Change |                            |
|---------------------------------|-------------|-----------|-----------|-----------|-----------|------------|------------|------------|------------|-----------|------------|----------------|----------------------------|
|                                 |             |           |           |           |           |            |            |            |            |           |            | 2005-<br>2006  | 1996-<br>2006 <sup>^</sup> |
| <b>District of Columbia</b>     | <b>8</b>    | <b>10</b> | <b>16</b> | <b>14</b> | <b>9</b>  | <b>14</b>  | <b>9</b>   | <b>34</b>  | <b>11</b>  | <b>18</b> | <b>15</b>  | <b>-16.7%</b>  | <b>87.5%</b>               |
| Maryland                        |             |           |           |           |           |            |            |            |            |           |            |                |                            |
| <i>State Total</i>              | -           | -         | -         | -         | -         | -          | 276        | 281        | 289        | 235       | 268        | 14.0%          | -                          |
| Montgomery County               | 7           | 17        | 8         | 12        | 13        | 18         | 11         | 12         | 16         | 9         | 17         | 88.9%          | 142.9%                     |
| Prince George's County          | 50          | 29        | 26        | 25        | 27        | 28         | 35         | 26         | 37         | 32        | 30         | -6.3%          | -40.0%                     |
| <b>MD Regional Total</b>        | <b>57</b>   | <b>46</b> | <b>34</b> | <b>37</b> | <b>40</b> | <b>46</b>  | <b>46</b>  | <b>38</b>  | <b>53</b>  | <b>41</b> | <b>47</b>  | <b>14.6%</b>   | <b>-17.5%</b>              |
| Virginia                        |             |           |           |           |           |            |            |            |            |           |            |                |                            |
| <i>State Total</i>              | -           | -         | -         | -         | -         | -          | 379        | 361        | 342        | 347       | 307        | -11.5%         | -                          |
| Arlington County                | 3           | 5         | 1         | 2         | 9         | 5          | 7          | 2          | 1          | 0         | 1          | n/a            | -66.7%                     |
| Fairfax County                  | 16          | 17        | 13        | 20        | 23        | 18         | 25         | 29         | 26         | 20        | 24         | 20.0%          | 50.0%                      |
| Loudoun County                  | 7           | 5         | 7         | 1         | 2         | 4          | 9          | 9          | 8          | 3         | 5          | 66.7%          | -28.6%                     |
| Prince William County           | 9           | 10        | 5         | 7         | 9         | 16         | 10         | 8          | 10         | 4         | 22         | 450.0%         | 144.4%                     |
| City of Alexandria              | 1           | 0         | 2         | 1         | 2         | 3          | 2          | 0          | 1          | 0         | 0          | 0.0%           | -100.0%                    |
| City of Fairfax                 | 1           | 0         | 0         | 0         | 0         | 0          | 0          | 2          | 0          | 0         | 3          | n/a            | 200.0%                     |
| City of Falls Church            | 1           | 0         | 0         | 0         | 0         | 0          | 0          | 0          | 0          | 0         | 0          | 0.0%           | -100.0%                    |
| City of Manassas                | -           | 0         | 0         | 0         | 1         | 0          | 0          | 0          | 0          | 0         | 0          | 0.0%           | -                          |
| City of Manassas Park           | -           | 0         | 0         | 0         | 0         | 0          | 0          | 0          | 0          | 0         | 0          | 0.0%           | -                          |
| <b>Northern Virginia Total</b>  | <b>38*</b>  | <b>37</b> | <b>28</b> | <b>31</b> | <b>46</b> | <b>46</b>  | <b>53</b>  | <b>50</b>  | <b>46</b>  | <b>27</b> | <b>55</b>  | <b>103.7%</b>  | <b>44.7%</b>               |
| <b>DC Metro Regional Total</b>  | <b>103*</b> | <b>93</b> | <b>78</b> | <b>82</b> | <b>95</b> | <b>106</b> | <b>108</b> | <b>122</b> | <b>110</b> | <b>86</b> | <b>117</b> | <b>36.0%</b>   | <b>13.6%</b>               |
| <b>National Parks in Region</b> | --          | --        | --        | --        | --        | --         | 8          | --         | 0          | 3         | 0          | -100.0%        | --                         |
| <b>Regional Total Adjusted</b>  | --          | --        | --        | --        | --        | --         | 116        | --         | 110        | 89        | 117        | 31.5%          | --                         |
| <b>National</b>                 | --          | --        | --        | --        | --        | --         | 17,524     | 17,013     | 16,628     | 17,590    | 17,602     | 0.1%           | --                         |

<sup>^</sup>Percent change not calculated for all jurisdictions due to missing data elements.

\*Data for cities of Manassas and Manassas Park not included in regional totals.

Source for National and state data: National Highway Traffic Safety Administration, U.S. Department of Transportation

Source for local data: Jurisdictional contacts, see specific contact in Methodology

**Table 3: Total Traffic Fatalities by Jurisdiction, 1996-2006**

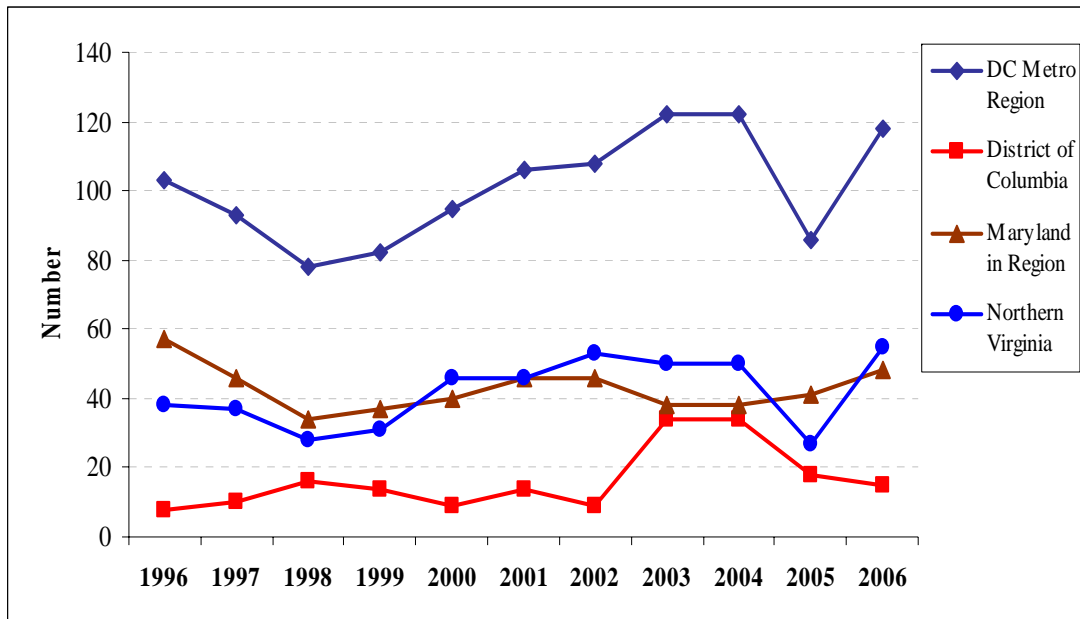
|                                 | 1996        | 1997       | 1998       | 1999       | 2000       | 2001       | 2002       | 2003       | 2004       | 2005       | 2006       | Percent Change |               |
|---------------------------------|-------------|------------|------------|------------|------------|------------|------------|------------|------------|------------|------------|----------------|---------------|
|                                 |             |            |            |            |            |            |            |            |            |            |            | 2005-2006      | 1996-2006^    |
| <b>District of Columbia</b>     | <b>65</b>   | <b>63</b>  | <b>59</b>  | <b>46</b>  | <b>50</b>  | <b>72</b>  | <b>50</b>  | <b>67</b>  | <b>45</b>  | <b>49</b>  | <b>41</b>  | <b>-16.3%</b>  | <b>-36.9%</b> |
| Maryland                        |             |            |            |            |            |            |            |            |            |            |            |                |               |
| <i>State Total</i>              | -           | -          | -          | -          | -          | -          | 661        | 649        | 643        | 614        | 651        | 6.0%           | --            |
| Montgomery County               | 49          | 55         | 46         | 49         | 58         | 59         | 71         | 50         | 59         | 38         | 57         | 50.0%          | 16.3%         |
| Prince George's County          | 112         | 85         | 111        | 79         | 91         | 128        | 141        | 122        | 121        | 134        | 111        | -17.2%         | -0.9%         |
| <b>MD Regional Total</b>        | <b>161</b>  | <b>140</b> | <b>157</b> | <b>128</b> | <b>149</b> | <b>187</b> | <b>212</b> | <b>172</b> | <b>180</b> | <b>172</b> | <b>168</b> | <b>-2.3%</b>   | <b>4.3%</b>   |
| Virginia                        |             |            |            |            |            |            |            |            |            |            |            |                |               |
| <i>State Total</i>              | -           | -          | -          | -          | -          | -          | 914        | 942        | 919        | 947        | 797        | -15.8%         | --            |
| Arlington County                | 10          | 7          | 3          | 8          | 14         | 9          | 12         | 7          | 3          | 4          | 4          | 0.0%           | -60.0%        |
| Fairfax County                  | 42          | 59         | 45         | 49         | 70         | 53         | 64         | 62         | 64         | 61         | 67         | 9.8%           | 59.5%         |
| Loudoun County                  | 17          | 13         | 21         | 11         | 9          | 15         | 16         | 24         | 11         | 20         | 19         | -5.0%          | 11.8%         |
| Prince William County           | 14          | 32         | 19         | 24         | 27         | 31         | 23         | 32         | 20         | 23         | 46         | 100.0%         | 228.6%        |
| City of Alexandria              | 2           | 2          | 3          | 4          | 5          | 5          | 6          | 2          | 3          | 2          | 1          | -50.0%         | -50.0%        |
| City of Fairfax                 | 2           | 1          | 0          | 0          | 0          | 1          | 1          | 2          | 0          | 2          | 3          | 50.0%          | 50.0%         |
| City of Falls Church            | 2           | 0          | 0          | 0          | 0          | 1          | 1          | 0          | 0          | 0          | 0          |                | -100.0%       |
| City of Manassas                | -           | 0          | 0          | 1          | 1          | 2          | 1          | 1          | 0          | 3          | 1          | -66.7%         | --            |
| City of Manassas Park           | -           | 0          | 0          | 1          | 0          | 0          | 0          | 0          | 0          | 0          | 0          |                | --            |
| <b>Northern Virginia Total</b>  | <b>89*</b>  | <b>114</b> | <b>91</b>  | <b>98</b>  | <b>126</b> | <b>117</b> | <b>124</b> | <b>130</b> | <b>101</b> | <b>115</b> | <b>141</b> | <b>22.6%</b>   | <b>57.3%</b>  |
| <b>DC Metro Regional Total</b>  | <b>315*</b> | <b>317</b> | <b>307</b> | <b>272</b> | <b>325</b> | <b>376</b> | <b>386</b> | <b>369</b> | <b>326</b> | <b>336</b> | <b>350</b> | <b>4.2%</b>    | <b>11.1%</b>  |
| <b>National Parks in Region</b> | -           | --         | --         | --         | --         | --         | 21         | --         | 16         | 15         | 12         | <b>-20.0%</b>  | --            |
| <b>Regional Total Adjusted</b>  | --          | --         | --         | --         | --         | --         | 407        | --         | 342        | 351        | 362        | <b>3.1%</b>    | --            |
| <b>National</b>                 | --          | --         | --         | --         | --         | --         | 43,005     | 42,643     | 42,636     | 43,510     | 42,642     | <b>-2.0%</b>   | --            |

^Percent change not calculated for all jurisdictions due to missing data elements.

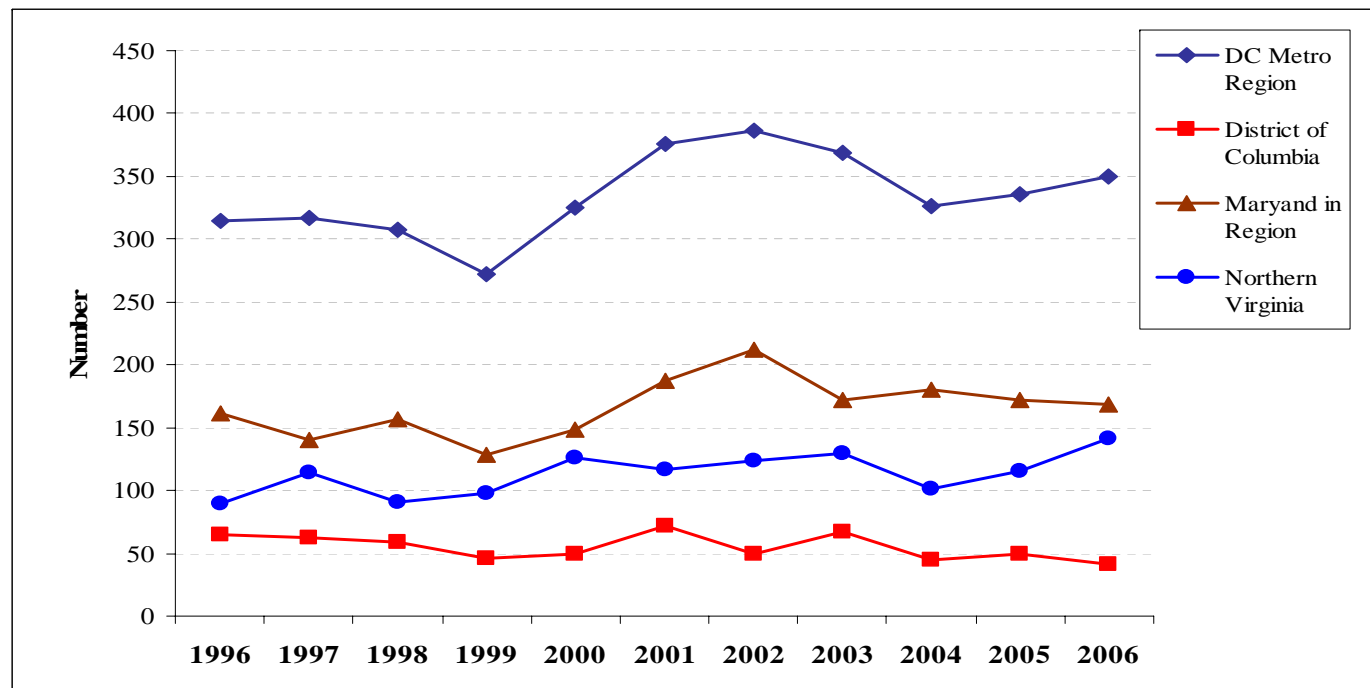
\*Data for cities of Manassas and Manassas Park not included in regional totals.

Source for National and state data: National Highway Traffic Safety Administration, U.S. Department of Transportation

Source for local data: see jurisdictional contacts in Methodology



**Figure 2: Number of Alcohol-related Traffic Fatalities Over Time, By Region, 1996-2006**



**Figure 3: Total Number of Motor Vehicle Fatalities Over Time, By Region, 1996-2006**

**Table 4: Percentage of All Traffic Fatalities that were Alcohol Related by Jurisdiction, 1996-2006**

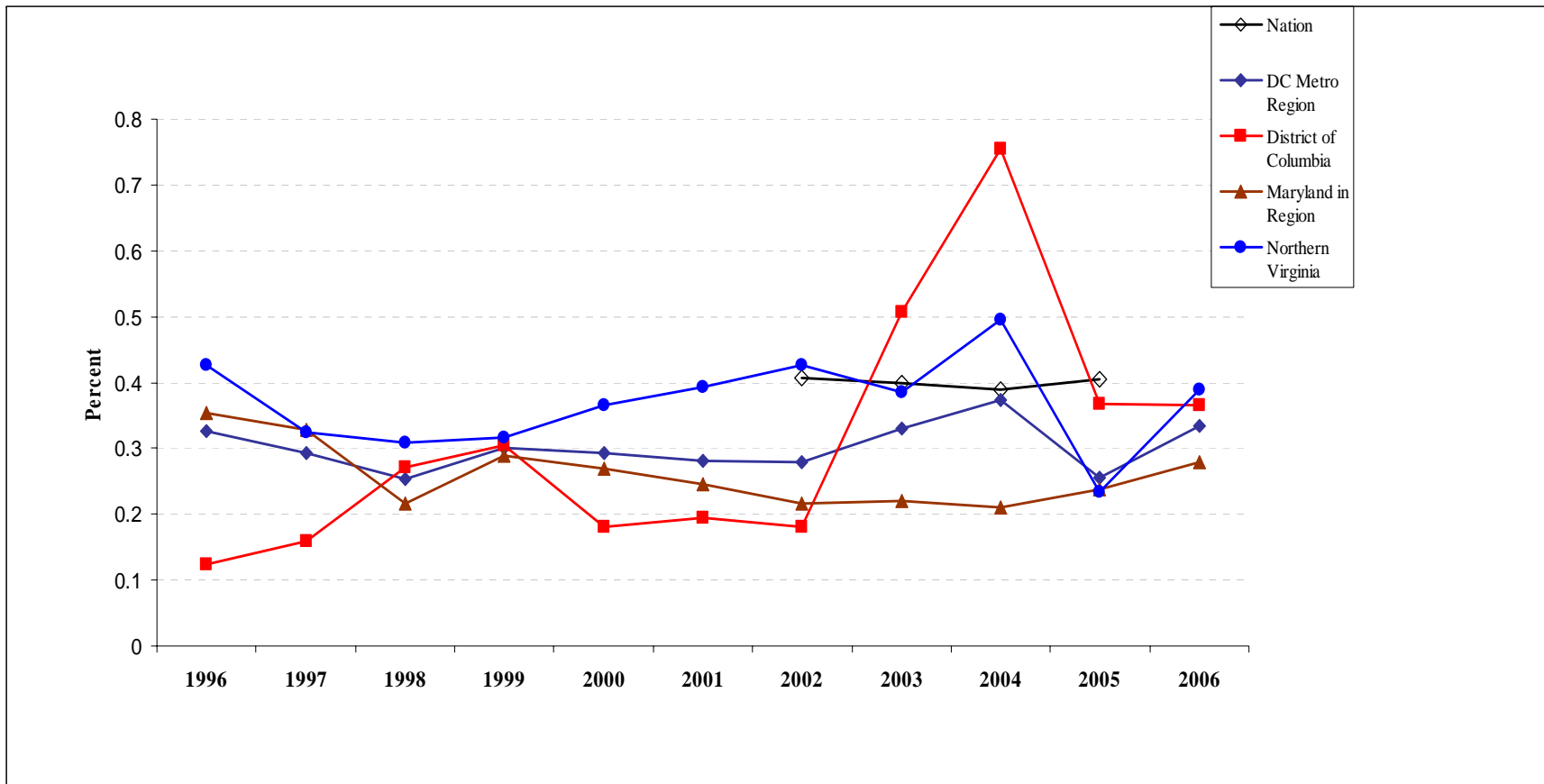
|                                 | 1996          | 1997         | 1998         | 1999         | 2000         | 2001         | 2002         | 2003         | 2004         | 2005         | 2006         |
|---------------------------------|---------------|--------------|--------------|--------------|--------------|--------------|--------------|--------------|--------------|--------------|--------------|
| <b>District of Columbia</b>     | <b>12.3%</b>  | <b>15.9%</b> | <b>27.1%</b> | <b>30.4%</b> | <b>18.0%</b> | <b>19.4%</b> | <b>18.0%</b> | <b>50.7%</b> | <b>75.6%</b> | <b>36.7%</b> | <b>36.6%</b> |
| Maryland                        |               |              |              |              |              |              |              |              |              |              |              |
| State Total                     | -             | -            | -            | -            | -            | -            | 41.8%        | 43.3%        | 43.7%        | 38.3%        | 41.2%        |
| Montgomery County               | 14.3%         | 30.9%        | 17.4%        | 24.5%        | 22.4%        | 30.5%        | 15.5%        | 24.0%        | 20.3%        | 23.7%        | 29.8%        |
| Prince George's County          | 44.6%         | 34.1%        | 23.4%        | 31.6%        | 29.7%        | 21.9%        | 24.8%        | 21.3%        | 21.5%        | 23.9%        | 27.0%        |
| <b>MD Regional Total</b>        | <b>35.4%</b>  | <b>32.9%</b> | <b>21.7%</b> | <b>28.9%</b> | <b>26.8%</b> | <b>24.6%</b> | <b>21.7%</b> | <b>22.1%</b> | <b>21.1%</b> | <b>23.8%</b> | <b>28.0%</b> |
| Virginia                        |               |              |              |              |              |              |              |              |              |              |              |
| State Total                     | -             | -            | -            | -            | -            | -            | 41.5%        | 38.3%        | 39.3%        | 36.6%        | 38.5%        |
| Arlington County                | 30.0%         | 71.4%        | 33.3%        | 25.0%        | 64.3%        | 55.6%        | 58.3%        | 28.6%        | 66.7%        | 0.0%         | 25.0%        |
| Fairfax County                  | 38.1%         | 28.8%        | 28.9%        | 40.8%        | 32.9%        | 34.0%        | 39.1%        | 46.8%        | 45.3%        | 32.8%        | 35.8%        |
| Loudoun County                  | 41.2%         | 38.5%        | 33.3%        | 9.1%         | 22.2%        | 26.7%        | 56.3%        | 37.5%        | 81.8%        | 15.0%        | 26.3%        |
| Prince William County           | 64.3%         | 31.3%        | 26.3%        | 29.2%        | 33.3%        | 51.6%        | 43.5%        | 25.0%        | 40.0%        | 17.4%        | 47.8%        |
| City of Alexandria              | 50.0%         | 0.0%         | 66.7%        | 25.0%        | 40.0%        | 60.0%        | 33.3%        | 0.0%         | 0.0%         | 0.0%         | 0.0%         |
| City of Fairfax                 | 50.0%         | 0.0%         | 0.0%         | 0.0%         | 0.0%         | 0.0%         | 0.0%         | 100.0%       | 0.0%         | 0.0%         | 100.0%       |
| City of Falls Church            | 50.0%         | 0.0%         | 0.0%         | 0.0%         | 0.0%         | 0.0%         | 0.0%         | 0.0%         | 0.0%         | 0.0%         | 0.0%         |
| City of Manassas                | -             | 0.0%         | 0.0%         | 0.0%         | 100.0%       | 0.0%         | 0.0%         | 0.0%         | 0.0%         | 0.0%         | 0.0%         |
| City of Manassas Park           | -             | 0.0%         | 0.0%         | 0.0%         | 0.0%         | 0.0%         | 0.0%         | 0.0%         | 0.0%         | 0.0%         | 0.0%         |
| <b>Northern Virginia Total</b>  | <b>42.7%^</b> | <b>32.5%</b> | <b>30.8%</b> | <b>31.6%</b> | <b>36.5%</b> | <b>39.3%</b> | <b>42.7%</b> | <b>38.5%</b> | <b>49.5%</b> | <b>23.5%</b> | <b>39.0%</b> |
| <b>DC Metro Regional Total</b>  | <b>32.7%^</b> | <b>29.3%</b> | <b>25.4%</b> | <b>30.1%</b> | <b>29.2%</b> | <b>28.2%</b> | <b>28.0%</b> | <b>33.1%</b> | <b>37.4%</b> | <b>25.6%</b> | <b>33.4%</b> |
| <b>National Parks in Region</b> | --            | --           | --           | --           | --           | --           | <b>31.8%</b> | --           | <b>0.0%</b>  | <b>20.0%</b> | <b>0.0%</b>  |
| <b>Regional Total Adjusted</b>  | --            | --           | --           | --           | --           | --           | <b>28.5%</b> | --           | <b>32.2%</b> | <b>25.4%</b> | <b>32.3%</b> |
| <b>National</b>                 | --            | --           | --           | --           | --           | --           | <b>40.7%</b> | <b>39.9%</b> | <b>39.0%</b> | <b>40.4%</b> | <b>41.3%</b> |

^Data for cities of Manassas and Manassas Park not included in regional totals.

Source for National and state data: National Highway Traffic Safety Administration, U.S. Department of Transportation

Source for local data: see jurisdictional contacts in Methodology

**Figure 4: Percentage of Total Fatalities Due to Crashes Involving Impaired Drivers Over Time, By Region, 1996-2006**



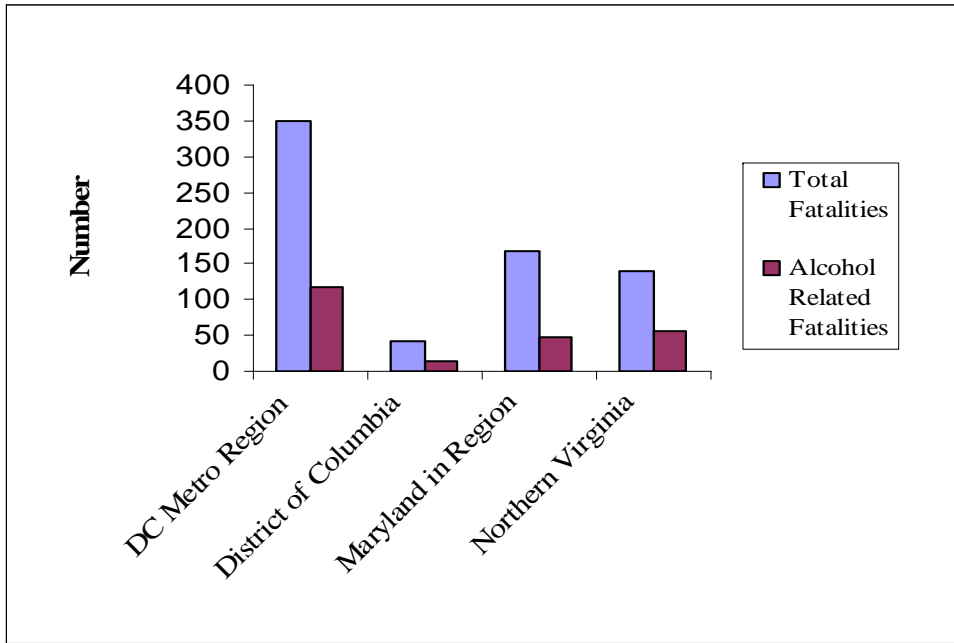
**Table 5A: SNAPSHOT! Motor Vehicle Fatalities in 2006**

|                                 | <b>Total<br/>Fatalities</b> | <b>Alcohol<br/>Related<br/>Fatalities</b> | <b>Percentage of Total<br/>Fatalities that were<br/>Alcohol Related</b> | <b>Percent Change Alcohol<br/>Related Fatalities, 2005-<br/>2006</b> |
|---------------------------------|-----------------------------|---|---|--|
| <b>District of Columbia</b>     | <b>41</b>                   | <b>15</b>                                 | <b>36.6%</b>  | <b>-16.7%</b>  |
| Maryland                        |                             |   |   |  |
| <i>State Total</i>              | 651                         | 268                                       | 41.2%   | 14.0%  |
| Montgomery County               | 57                          | 17  | 29.8%   | 88.9%  |
| Prince George's County          | 111                         | 30  | 27.0%   | -6.3%  |
| <b>MD Regional Total</b>        | <b>168</b>                  | <b>47</b>                                 | <b>28.0%</b>  | <b>14.6%</b>   |
| Virginia                        |                             |   |   |  |
| <i>State Total</i>              | 797                         | 307                                       | 38.5%   | -11.5%   |
| Arlington County                | 4                           | 1   | 25.0%   | n/a  |
| Fairfax County                  | 67                          | 24  | 35.8%   | 20.0%  |
| Loudoun County                  | 19                          | 5   | 26.3%   | 66.7%  |
| Prince William County           | 46                          | 22  | 47.8%   | 450.0%   |
| City of Alexandria              | 1                           | 0   | 0.0%  | 0.0%   |
| City of Fairfax                 | 3                           | 3   | 0.0%  | n/a  |
| City of Falls Church            | 0                           | 0   | 0.0%  | 0.0%   |
| City of Manassas                | 1                           | 0   | 0.0%  | 0.0%   |
| City of Manassas Park           | 0                           | 0   | 0.0%  | 0.0%   |
| <b>Northern Virginia Total</b>  | <b>141</b>                  | <b>55</b>                                 | <b>39.0%</b>  | <b>103.7%</b>  |
| <b>DC Metro Regional Total</b>  | <b>336</b>                  | <b>86</b>                                 | <b>25.6%</b>  | <b>36.0%</b>   |
| <b>National Parks in Region</b> | <b>16</b>                   | <b>0</b>                                  | <b>0.0%</b>   | <b>-100.0%</b>   |
| <b>Regional Total Adjusted</b>  | <b>352</b>                  | <b>86</b>                                 | <b>24.4%</b>  | <b>31.5%</b>   |
| <b>National</b>                 | <b>43,510</b>               | <b>17,590</b>                             | <b>40.4%</b>  | <b>0.1%</b>  |

Source for National and state data: National Highway Traffic Safety Administration, U.S. Department of Transportation

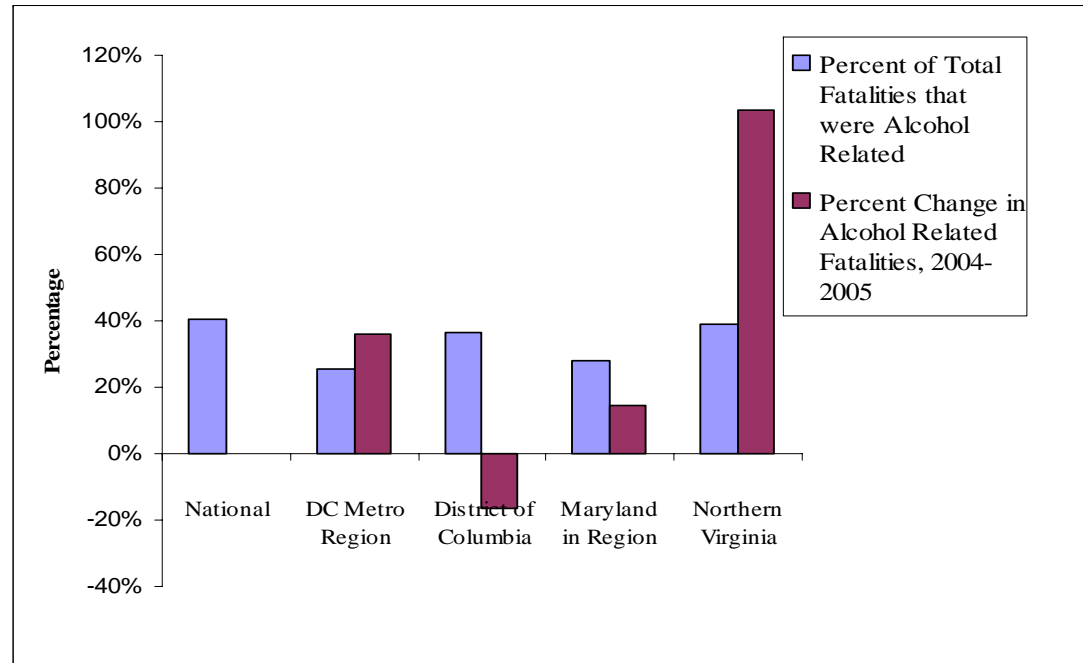
Source for local data: Jurisdictional contacts, see specific contact in Methodology





**Figure 5A.1: SNAPSHOT! Number of Total and Alcohol-Related Motor Vehicle Fatalities, By Region, 2006**

**Figure 5A.2: SNAPSHOT! Percentage of Fatalities: Alcohol-Related and Change 2002-2006**



**Table 5B: SNAPSHOT! Motor Vehicle Fatalities for Persons Under 21 Years of Age, 2006**

|   | <b>Total<br/>Fatalities</b> | <b>Alcohol<br/>Related<br/>Fatalities</b> | <b>Percentage of Total<br/>Fatalities that were<br/>Alcohol Related</b> | <b>Percent Change Alcohol<br/>Related Fatalities, 2005-<br/>2006</b> |
|---|-----------------------------|---|---|--|
| <b>District of Columbia</b>   | <b>4</b>                    | <b>0</b>                                  | <b>0.0%</b>   | <b>-100.0%</b>   |
| Maryland  |                             |   |   |  |
| Montgomery County   | 57                          | 17  | 29.8%   | 0.0%   |
| Prince George's County  | 11                          | 0   | 0.0%  | 0.0%   |
| <b>MD Regional Total</b>  | <b>22</b>                   | <b>2</b>                                  | <b>9.1%</b>   | <b>-33.3%</b>  |
| Virginia  |                             |   |   |  |
| Arlington County  | 0                           | 0   | n/a   | 0.0%   |
| Fairfax County  | 8                           | 4   | 50.0%   | 0.0%   |
| Loudoun County  | 6                           | 0   | 0.0%  | 0.0%   |
| Prince William County   | 5                           | 0   | 0.0%  | 0.0%   |
| City of Alexandria  | 0                           | 0   | n/a   | 0.0%   |
| City of Fairfax   | 1                           | 0   | 0.0%  | 0.0%   |
| City of Falls Church  | 0                           | 0   | n/a   | 0.0%   |
| City of Manassas  | 0                           | 0   | n/a   | 0.0%   |
| City of Manassas Park   | 0                           | 0   | n/a   | 0.0%   |
| <b>VA Regional Total</b>  | <b>27</b>                   | <b>6</b>                                  | <b>22.2%</b>  | <b>-14.3%</b>  |
| <b>National Parks in Region</b>   | <b>60</b>                   | <b>0</b>                                  | <b>0.0%</b>   | <b>--</b>  |
| <b>Regional Total Adjusted</b>  | <b>0</b>                    | <b>2</b>                                  | <b>14.3%</b>  | <b>--</b>  |
| <b>DC Metro Regional Total</b>  | <b>60</b>                   | <b>8</b>                                  | <b>13.3%</b>  | <b>-38.5%</b>  |
| ^Montgomery County data for persons under the age of 21 years determined to be driver and "at fault" for accident |                             |   |   |  |
| *Prince William County data represents persons under the age of 24 years  |                             |   |   |  |
| Source for local data: see jurisdictional contacts in Methodology   |                             |   |   |  |

## TRAFFIC CRASHES

### Washington Metro Region

The number of alcohol-related motor vehicle crashes increased in the Washington Metro region between 2005 and 2006. While the percentage of crashes involving alcohol is relatively low, these crashes lead to injury and death at a much higher rate than overall crashes.

There were 85,472 motor vehicle crashes in the Washington Metro region in 2006; 5,321 as a result of alcohol impairment. Total crashes decreased 1.7% and alcohol-related crashes increased 18.4% compared to 2005. The percentage of crashes that were alcohol-related was 6.2% compared to 5.2% in 2005.

---

Alcohol-related crashes in the Washington Metro region increased 18.4% in 2006.

Over the last ten years alcohol-related traffic crashes have increased four years and decreased five years. This year's increase of 18.4% is the highest one-year percentage increase in the past ten years. The lowest percentage increase was 5.2% in 2005.

---

Motor vehicle crashes related to impaired driving in the Washington Metro region have increased by 13.4% between 1996 and 2006. The total number of traffic crashes increased 39.5% during that same time period. This long term increase in the Metro area can be attributed mostly to increases in the Virginia region (total crashes up 27% and alcohol-related crashes up 24.9%).

## Regional Jurisdictions

### *District of Columbia*

In 2006, compared to 2005, the District of Columbia saw a decrease in total crashes and a large increase in alcohol-related motor vehicle crashes.

Total crashes decreased by 7% and alcohol-related crashes increased by 75.5%. The percentage of crashes that were alcohol-related (2.5%) was lower than the rest of the Washington Metro region.

### *Montgomery and Prince George's Counties, Maryland*

Maryland counties saw a significant decrease in the number of total crashes in 2006. In Prince George's County there was an increase in the percentage of alcohol-related crashes.

---

Since 1996, counties in the Maryland Region have seen an increase in alcohol-related crashes (+3.4%).

---

In the Maryland jurisdictions, there was a 3.4% increase in the number of alcohol-related crashes in 2006, compared to 2005. The percentage of crashes involving alcohol was 8.2%; an increase from 2005 when 7.7% were alcohol-related. Total crashes of all types decreased by 2.3%.

In the past year, alcohol-related crashes increased in Prince George's County by 8.9% while Montgomery County saw a decrease of 3.6%. Overall traffic crashes decreased in Prince George's County (-3%) and decreased in Montgomery County (-1.3%).

Since 1996, Maryland counties in the Washington Metro region have seen a significant decrease in the number of alcohol-related crashes (-11.7%). Montgomery County's highest percentage of alcohol-related crashes was in 1996 (8.3%); its lowest was in 2001 (5.1%). Prince George's County's highest percentage of alcohol-related crashes was also in 1996 (9.2%), with its lowest being 6.2% in 1999. The number of total motor vehicle crashes in the region has decreased (-4.5%) from 1996 to 2006.

### *Northern Virginia*

During 2006 there was a reversal of last year's dramatic improvement in the number of alcohol-related motor vehicle crashes in Northern Virginia as the region saw an increase of 29%. Total crashes decreased slightly (-2.4%). The percentage of crashes related to alcohol was 6.9% in 2006, an increase from last year's 5.2%.

Localities within the Northern Virginia region had widely varying activity in 2006. For example, the largest increase in alcohol-related traffic crashes in the Northern Virginia region was in the City of Falls Church which went from one crash in 2005 up to eleven in 2006. The largest decrease was in the City of Manassas (-20.2%). The percentage of crashes related to alcohol ranged from 19.8% in the City of Manassas Park to 3.8% in the City of Fairfax.

Between 1996 and 2006 the number of alcohol-related crashes in Northern Virginia has increased by 24.9%. In the same time period, total crashes rose 27%. The percentage of alcohol-related crashes significantly increased for the region in 2006 (6.9%).

**Table 6: Alcohol Related Traffic Crashes by Jurisdiction, 1996-2006**

|                                 | 1996          | 1997          | 1998          | 1999          | 2000          | 2001         | 2002          | 2003         | 2004         | 2005         | 2006         | Percent Change |               |
|---------------------------------|---------------|---------------|---------------|---------------|---------------|--------------|---------------|--------------|--------------|--------------|--------------|----------------|---------------|
|                                 |               |               |               |               |               |              |               |              |              |              |              | 2005-2006      | 1996-2006     |
| <b>District of Columbia</b>     | -             | -             | -             | -             | -             | 287          | -             | 698          | 261          | 237          | 416          | 75.5%          | --            |
| Maryland                        |               |               |               |               |               |              |               |              |              |              |              |                |               |
| Montgomery County               | 1,131         | 809           | 775           | 926           | 899           | 720          | 963           | 1,010        | 1,012        | 975          | 940          | -3.6%          | -16.9%        |
| Prince George's County          | 1,449         | 962           | 1,003         | 876           | 1,011         | 1,305        | 1,299         | 1,226        | 1,139        | 1,229        | 1,338        | 8.9%           | -7.7%         |
| <b>MD Regional Total</b>        | <b>2,580</b>  | <b>1,771</b>  | <b>1,778</b>  | <b>1,802</b>  | <b>1,910</b>  | <b>2,025</b> | <b>2,262</b>  | <b>2,236</b> | <b>2,151</b> | <b>2,204</b> | <b>2,278</b> | <b>3.4%</b>    | <b>-11.7%</b> |
| Virginia                        |               |               |               |               |               |              |               |              |              |              |              |                |               |
| Arlington County                | 305           | 281           | 272           | 307           | 339           | 352          | 358           | 324          | 268          | 224          | 290          | 29.5%          | -4.9%         |
| Fairfax County                  | 994           | 967           | 969           | 1,073         | 1,057         | 1,233        | 1,250         | 1,243        | 1,198        | 935          | 1,213        | 29.7%          | 22.0%         |
| Loudoun County                  | 172           | 137           | 156           | 166           | 166           | 222          | 259           | 246          | 236          | 184          | 253          | 37.5%          | 47.1%         |
| Prince William County           | 346           | 358           | 356           | 380           | 430           | 415          | 443           | 462          | 452          | 366          | 515          | 40.7%          | 48.8%         |
| City of Alexandria              | 161           | 152           | 140           | 127           | 136           | 124          | 130           | 124          | 139          | 111          | 116          | 4.5%           | -28.0%        |
| City of Fairfax                 | 27            | 29            | 50            | 36            | 40            | 52           | 51            | 59           | 44           | 35           | 35           | 0.0%           | 29.6%         |
| City of Falls Church            | 17            | 12            | 18            | 18            | 21            | 12           | 13            | 19           | 10           | 1            | 11           | 1000.0%        | -35.3%        |
| City of Manassas                | -             | 34            | 44            | 48            | 41            | 50           | 65            | 51           | 70           | 89           | 71           | -20.2%         | 108.8%        |
| City of Manassas Park           | -             | 8             | 15            | 19            | 12            | 12           | 12            | 12           | 11           | 13           | 22           | 69.2%          | 175.0%        |
| <b>Northern Virginia Total</b>  | <b>2,022*</b> | <b>1,978</b>  | <b>2,020</b>  | <b>2,171</b>  | <b>2,242</b>  | <b>2,472</b> | <b>2,581</b>  | <b>2,540</b> | <b>2,428</b> | <b>1,958</b> | <b>2,526</b> | <b>29.0%</b>   | <b>24.9%</b>  |
| <b>DC Metro Regional Total</b>  | <b>4,602*</b> | <b>3,749*</b> | <b>3,798*</b> | <b>3,976*</b> | <b>4,152*</b> | <b>4,784</b> | <b>4,843*</b> | <b>5,474</b> | <b>4,840</b> | <b>4,399</b> | <b>5,220</b> | <b>18.7%</b>   | <b>13.4%</b>  |
| <b>National Parks in Region</b> | --            | --            | --            | --            | --            | --           | 132           | --           | 110          | 96           | 101          | 5.2%           | --            |
| <b>Regional Total Adjusted</b>  | --            | --            | --            | --            | --            | --           | 4,975         | --           | 4,950        | 4,495        | 5,321        | 18.4%          | --            |

\*Regional totals do not include jurisdictions with missing data.

#District of Columbia percentage 2001-2004

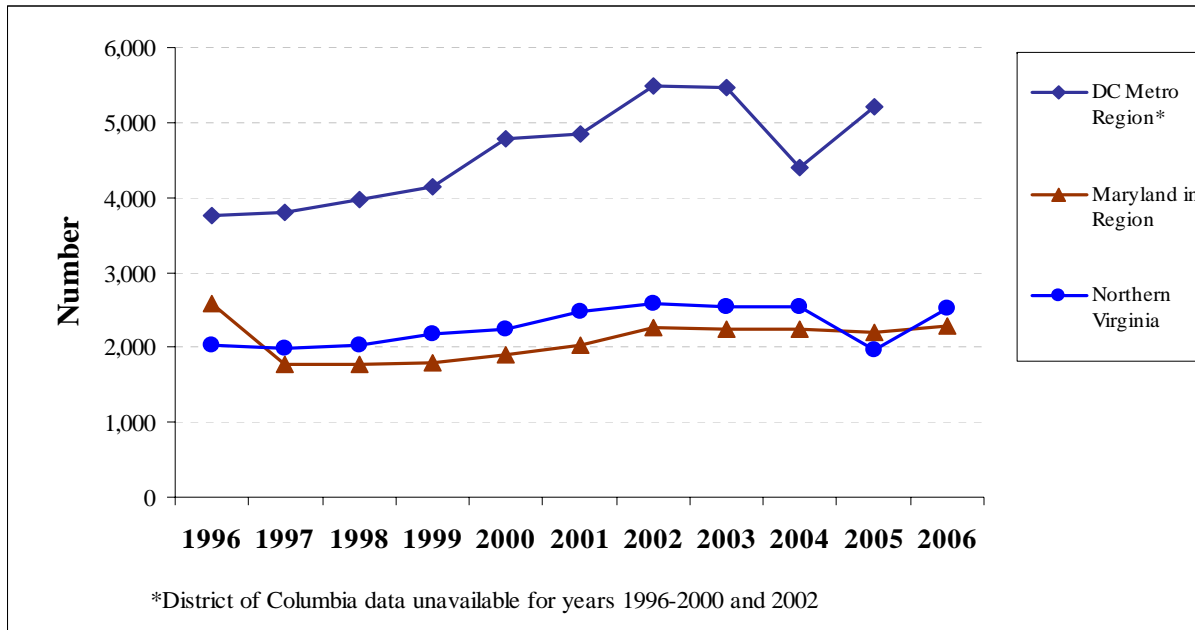
Source: Jurisdictional contacts, see specific contact in Methodology

**Table 7: Total Traffic Crashes by Jurisdiction, 1996-2006**

|                                 | 1996           | 1997          | 1998           | 1999           | 2000           | 2001          | 2002          | 2003          | 2004          | 2005          | 2006          | Percent Change |              |
|---------------------------------|----------------|---------------|----------------|----------------|----------------|---------------|---------------|---------------|---------------|---------------|---------------|----------------|--------------|
|                                 |                |               |                |                |                |               |               |               |               |               |               | 2005-2006      | 1996-2006    |
| <b>District of Columbia</b>     | -              | <b>16,300</b> | -              | -              | -              | <b>18,261</b> | <b>17,734</b> | <b>22,722</b> | <b>18,490</b> | <b>17,717</b> | <b>16,478</b> | <b>-7.0%</b>   | <b>-</b>     |
| Maryland                        |                |               |                |                |                |               |               |               |               |               |               |                |              |
| Montgomery County               | 13,548         | 13,015        | 12,811         | 12,779         | 13,356         | 14,220        | 13,784        | 13,553        | 13,053        | 12,235        | 12,076        | -1.3%          | -10.9%       |
| Prince George's County          | 15,695         | 14,792        | 14,430         | 14,226         | 15,332         | 16,023        | 16,602        | 16,885        | 15,901        | 16,349        | 15,863        | -3.0%          | 1.1%         |
| <b>MD Regional Total</b>        | <b>29,243</b>  | <b>27,807</b> | <b>27,241</b>  | <b>27,005</b>  | <b>28,688</b>  | <b>30,243</b> | <b>30,386</b> | <b>30,438</b> | <b>28,954</b> | <b>28,584</b> | <b>27,939</b> | <b>-2.3%</b>   | <b>-4.5%</b> |
| Virginia                        |                |               |                |                |                |               |               |               |               |               |               |                |              |
| Arlington County                | 3,492          | 3,409         | 3,324          | 3,378          | 3,457          | 3,434         | 3,740         | 3,532         | 3,584         | 3,383         | 2,984         | -11.8%         | -14.5%       |
| Fairfax County                  | 15,513         | 15,453        | 16,476         | 17,913         | 19,082         | 19,636        | 18,866        | 19,040        | 18,728        | 18,363        | 18,254        | -0.6%          | 17.7%        |
| Loudoun County                  | 2,003          | 1,933         | 2,168          | 2,685          | 3,034          | 3,697         | 3,725         | 5,286         | 3,824         | 5,718         | 4,234         | -26.0%         | 111.4%       |
| Prince William County           | 4,643          | 4,541         | 4,595          | 4,895          | 5,310          | 5,883         | 5,899         | 5,230         | 5,492         | 5,648         | 7,132         | 26.3%          | 53.6%        |
| City of Alexandria              | 2,511          | 2,517         | 2,397          | 2,319          | 2,282          | 2,118         | 2,306         | 2,188         | 2,274         | 2,193         | 2,019         | -7.9%          | -19.6%       |
| City of Fairfax                 | 567            | 733           | 756            | 713            | 840            | 953           | 928           | 1,125         | 1,124         | 1,137         | 926           | -18.6%         | 63.3%        |
| City of Falls Church            | 270            | 291           | 265            | 309            | 316            | 267           | 268           | 245           | 283           | 196           | 240           | 22.4%          | -11.1%       |
| City of Manassas                | -              | 668           | 733            | 689            | 787            | 902           | 846           | 813           | 923           | 948           | 931           | -1.8%          | -            |
| City of Manassas Park           | -              | 86            | 88             | 181            | 87             | 124           | 118           | 276           | 114           | 136           | 111           | -18.4%         | -            |
| <b>Northern Virginia Total</b>  | <b>28,999*</b> | <b>29,631</b> | <b>30,802</b>  | <b>33,082</b>  | <b>35,195</b>  | <b>37,014</b> | <b>36,696</b> | <b>37,735</b> | <b>36,346</b> | <b>37,722</b> | <b>36,831</b> | <b>-2.4%</b>   | <b>27.0%</b> |
| <b>DC Metro Regional Total</b>  | <b>58,242*</b> | <b>73,738</b> | <b>58,043*</b> | <b>60,087*</b> | <b>63,883*</b> | <b>85,518</b> | <b>84,816</b> | <b>90,895</b> | <b>83,790</b> | <b>84,023</b> | <b>81,248</b> | <b>-3.3%</b>   | <b>39.5%</b> |
| <b>National Parks in Region</b> | <b>--</b>      | <b>--</b>     | <b>--</b>      | <b>--</b>      | <b>--</b>      | <b>--</b>     | <b>2,978</b>  | <b>--</b>     | <b>3,640</b>  | <b>2,896</b>  | <b>4,224</b>  | <b>45.9%</b>   | <b>--</b>    |
| <b>Regional Total Adjusted</b>  | <b>--</b>      | <b>--</b>     | <b>--</b>      | <b>--</b>      | <b>--</b>      | <b>--</b>     | <b>87,794</b> | <b>90,895</b> | <b>87,430</b> | <b>86,919</b> | <b>85,472</b> | <b>-1.7%</b>   | <b>--</b>    |

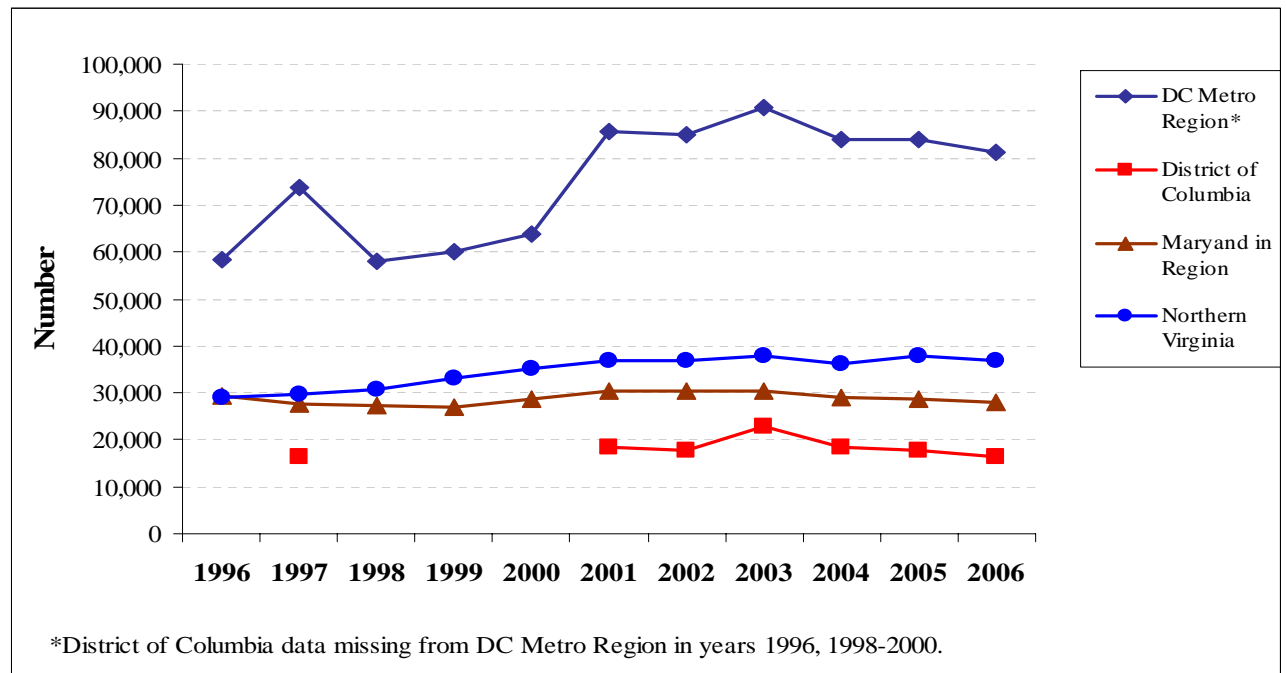
\*Regional totals do not include jurisdictions with missing data.

#District of Columbia percent change 1997-2006



**Figure 6: Number of Alcohol-related Traffic Crashes Over Time, By Region, 1996-2006**

**Figure 7: Total Number of Motor Vehicle Crashes Over Time, By Region, 1996-2006**



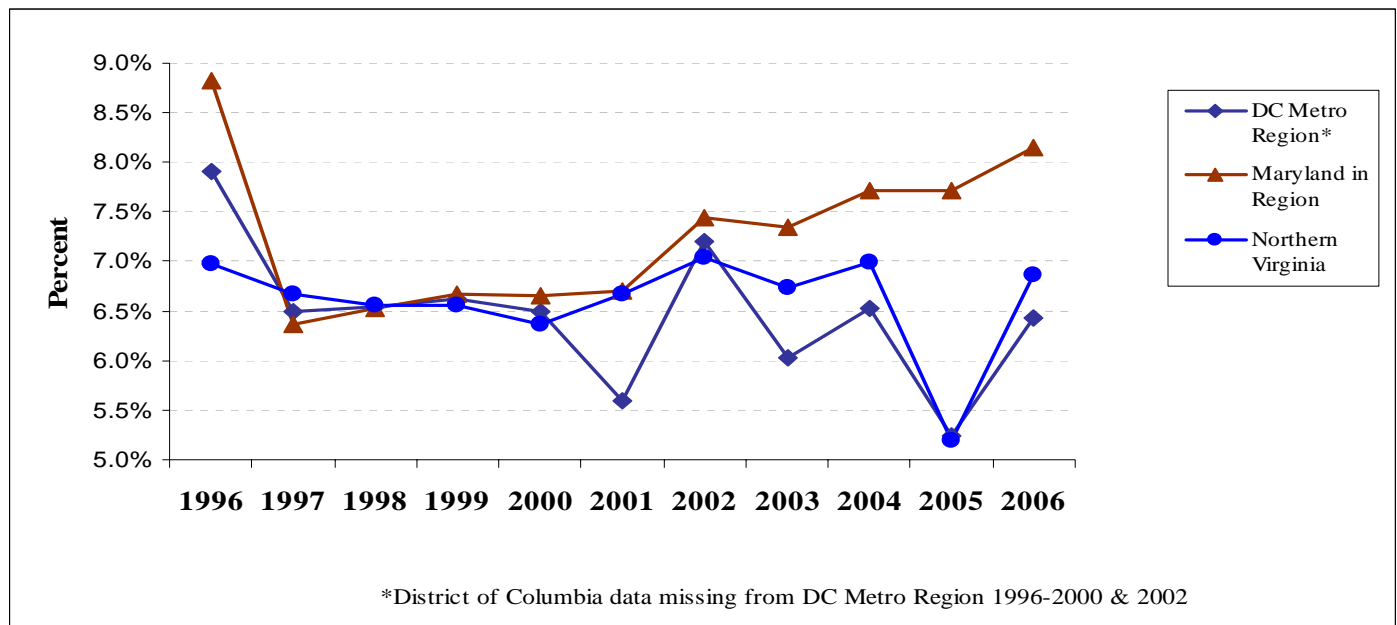


**Table 8: Percentage of all Traffic Crashes that were Alcohol Related, 1996-2006**

|                                 | 1996         | 1997         | 1998        | 1999        | 2000        | 2001        | 2002         | 2003        | 2004        | 2005        | 2006        |
|---------------------------------|--------------|--------------|-------------|-------------|-------------|-------------|--------------|-------------|-------------|-------------|-------------|
| <b>District of Columbia</b>     | -            | -            | -           | -           | -           | 1.6%        | -            | 3.1%        | 3.8%        | 1.3%        | 2.5%        |
| Maryland                        |              |              |             |             |             |             |              |             |             |             |             |
| Montgomery County               | 8.3%         | 6.2%         | 6.0%        | 7.2%        | 6.7%        | 5.1%        | 7.0%         | 7.5%        | 7.7%        | 8.0%        | 7.8%        |
| Prince George's County          | 9.2%         | 6.5%         | 7.0%        | 6.2%        | 6.6%        | 8.1%        | 7.8%         | 7.3%        | 7.7%        | 7.5%        | 8.4%        |
| <b>MD Regional Total</b>        | <b>8.8%</b>  | <b>6.4%</b>  | <b>6.5%</b> | <b>6.7%</b> | <b>6.7%</b> | <b>6.7%</b> | <b>7.4%</b>  | <b>7.3%</b> | <b>7.7%</b> | <b>7.7%</b> | <b>8.2%</b> |
| Virginia                        |              |              |             |             |             |             |              |             |             |             |             |
| Arlington County                | 8.7%         | 8.2%         | 8.2%        | 9.1%        | 9.8%        | 10.3%       | 9.6%         | 9.2%        | 9.0%        | 6.6%        | 9.7%        |
| Fairfax County                  | 6.4%         | 6.3%         | 5.9%        | 6.0%        | 5.5%        | 6.3%        | 6.6%         | 6.5%        | 6.6%        | 5.1%        | 6.6%        |
| Loudoun County                  | 8.6%         | 7.1%         | 7.2%        | 6.2%        | 5.5%        | 6.0%        | 7.0%         | 4.7%        | 6.4%        | 3.2%        | 6.0%        |
| Prince William County           | 7.5%         | 7.9%         | 7.7%        | 7.8%        | 8.1%        | 7.1%        | 7.5%         | 8.8%        | 8.4%        | 6.5%        | 7.2%        |
| City of Alexandria              | 6.4%         | 6.0%         | 5.8%        | 5.5%        | 6.0%        | 5.9%        | 5.6%         | 5.7%        | 5.5%        | 5.1%        | 5.7%        |
| City of Fairfax                 | 4.8%         | 4.0%         | 6.6%        | 5.0%        | 4.8%        | 5.5%        | 5.5%         | 5.2%        | 5.2%        | 3.1%        | 3.8%        |
| City of Falls Church            | 6.3%         | 4.1%         | 6.8%        | 5.8%        | 6.6%        | 4.5%        | 4.9%         | 7.8%        | 6.7%        | 0.5%        | 4.6%        |
| City of Manassas                | -            | 5.1%         | 6.0%        | 7.0%        | 5.2%        | 5.5%        | 7.7%         | 6.3%        | 5.5%        | 9.4%        | 7.6%        |
| City of Manassas Park           | -            | 9.3%         | 17.0%       | 10.5%       | 13.8%       | 9.7%        | 10.2%        | 4.3%        | 10.5%       | 9.6%        | 19.8%       |
| <b>Northern Virginia Total</b>  | <b>7.0%^</b> | <b>6.7%</b>  | <b>6.6%</b> | <b>6.6%</b> | <b>6.4%</b> | <b>6.7%</b> | <b>7.0%</b>  | <b>6.7%</b> | <b>7.0%</b> | <b>5.2%</b> | <b>6.9%</b> |
| <b>DC Metro Regional Total</b>  | <b>7.9%^</b> | <b>6.5%*</b> | <b>6.5%</b> | <b>6.6%</b> | <b>6.5%</b> | <b>5.6%</b> | <b>7.2%*</b> | <b>6.0%</b> | <b>6.5%</b> | <b>5.2%</b> | <b>6.4%</b> |
| <b>National Parks in Region</b> | --           | --           | --          | --          | --          | --          | 4.4%         | --          | 3.0%        | 3.3%        | 2.4%        |
| <b>Regional Total Adjusted</b>  | --           | --           | --          | --          | --          | --          | 5.8%         | 6.0%        | 5.7%        | 5.2%        | 6.2%        |

^Percentage not calculated for all jurisdictions due to missing data elements.  
 \*Percentage calculated excludes District of Columbia total crashes due to missing data on alcohol-related crashes.  
 Source: Jurisdictional contacts, see specific contact in Methodology

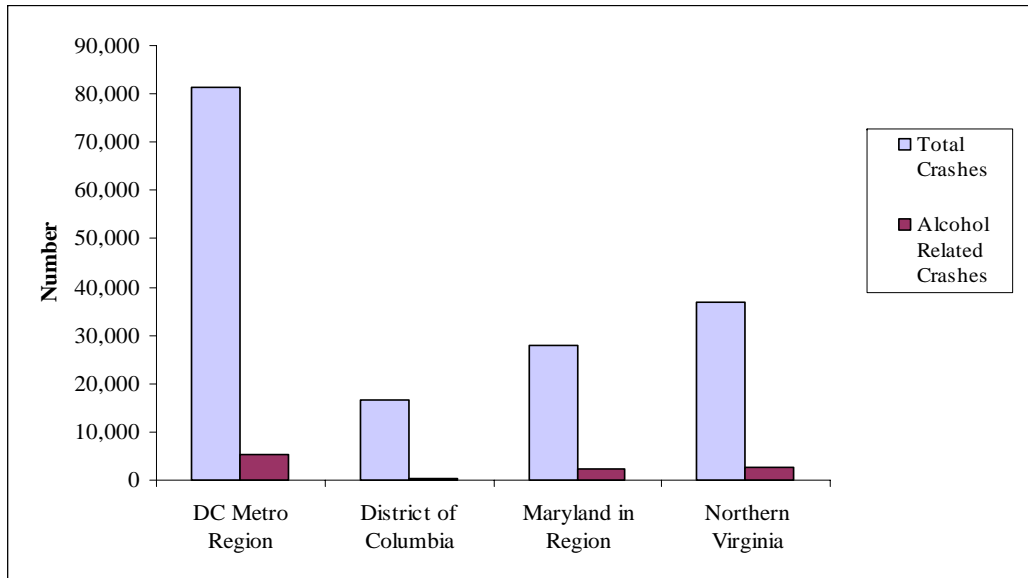
**Figure 8: Percentage of Total Crashes Due to Crashes Involving Impaired Drivers Over Time, By Region, 1996-2006**



**Table 9: SNAPSHOT! Motor Vehicle Crashes in 2006**

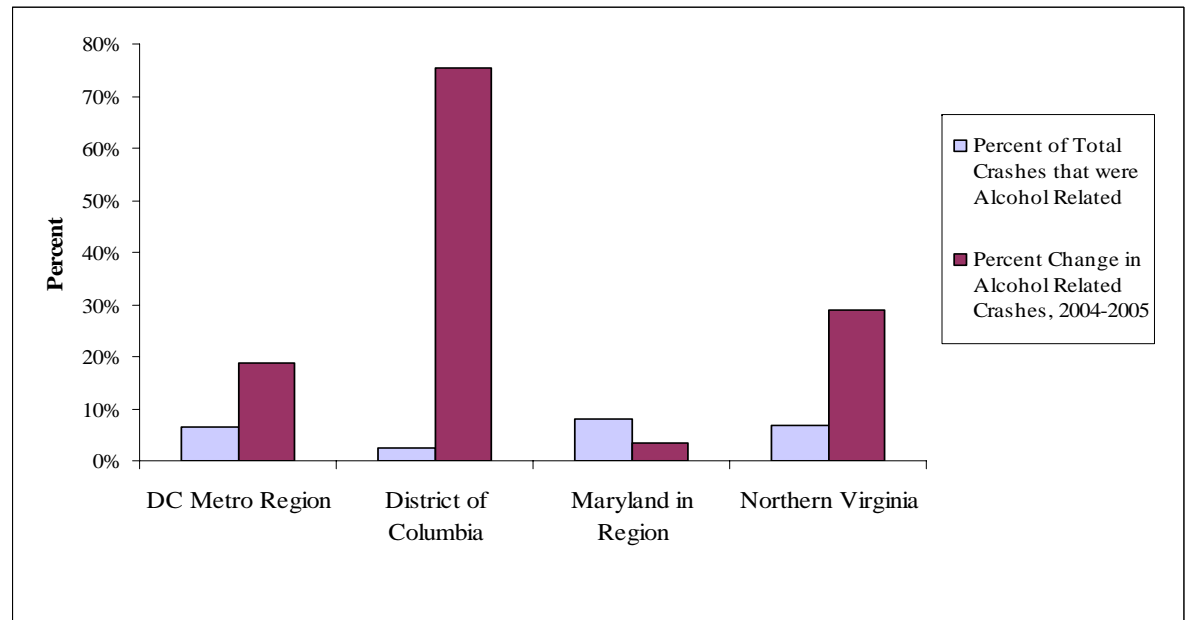
|                                 | <b>Total Crashes</b> | <b>Alcohol Related Crashes</b> | <b>Percentage of Total Crashes that were Alcohol Related</b> | <b>Percentage Change Alcohol-related Crashes, 2005-2006</b> |
|---------------------------------|----------------------|--------------------------------|--|---|
| <b>District of Columbia</b>     | <b>16,478</b>        | <b>416</b>                     | <b>2.5%</b>  | <b>75.5%</b>  |
| Maryland                        |                      |                                |  |   |
| Montgomery County               | 12,076               | 940                            | 7.8%   | -3.6%   |
| Prince George's County          | 15,863               | 1,338                          | 8.4%   | 8.9%  |
| <b>MD Regional Total</b>        | <b>27,939</b>        | <b>2,278</b>                   | <b>8.2%</b>  | <b>3.4%</b>   |
| Virginia                        |                      |                                |  |   |
| Arlington County                | 2,984                | 290                            | 9.7%   | 29.5%   |
| Fairfax County                  | 18,254               | 1,213                          | 6.6%   | 29.7%   |
| Loudoun County                  | 4,234                | 253                            | 6.0%   | 37.5%   |
| Prince William County           | 7,132                | 515                            | 7.2%   | 40.7%   |
| City of Alexandria              | 2,019                | 116                            | 5.7%   | 4.5%  |
| City of Fairfax                 | 926                  | 35                             | 3.8%   | 0.0%  |
| City of Falls Church            | 240                  | 11                             | 4.6%   | 1000.0%   |
| City of Manassas                | 931                  | 71                             | 7.6%   | -20.2%  |
| City of Manassas Park           | 111                  | 22                             | 19.8%  | 69.2%   |
| <b>Northern Virginia Total</b>  | <b>36,831</b>        | <b>2,526</b>                   | <b>6.9%</b>  | <b>29.0%</b>  |
| <b>DC Metro Regional Total</b>  | <b>81,248</b>        | <b>5,220</b>                   | <b>6.4%</b>  | <b>18.7%</b>  |
| <b>National Parks in Region</b> | <b>4,224</b>         | <b>101</b>                     | <b>2.4%</b>  | <b>5.2%</b>   |
| <b>Regional Total Adjusted</b>  | <b>85,472</b>        | <b>5,321</b>                   | <b>5.8%</b>  | <b>18.4%</b>  |

Source: Jurisdictional contacts, see specific contact in Methodology



**Figure 9A: SNAPSHOT! Number of Total and Alcohol-related Motor Vehicle Crashes, By Region, 2006**

**Figure 9B: SNAPSHOT! Percentage of Crashes: Alcohol-related and Change 2002-2006**



## TRAFFIC INJURIES

### Washington Metro Region

There was a slight regional increase in the number of motor vehicle injuries, and a nearly 50% increase in the number of alcohol-related motor vehicle injuries in the Washington Metro region in 2006. Alcohol-related injuries increases between 2005 and 2006 were seen in every jurisdiction in Virginia, while decreases were seen in Maryland jurisdictions.

---

Increases in alcohol-related injuries between 2005 and 2006 were seen in every jurisdiction in VA.

---

Specifically, the number of reported alcohol-related injuries increased by 49.7% in 2006 while total traffic injuries increased by 9%. The percentage of traffic injuries related to alcohol impairment was 8.8%.

This year's alcohol-related injuries represent a 3.7% decrease since 1999. Since 1996 the total regional traffic injuries have decreased by 10.5%.

## Regional Jurisdictions

### *District of Columbia*

The District of Columbia experienced a decrease in the total number of traffic injuries in 2006. Specifically, the total number of injuries decreased by 14.8%, which was the largest decrease seen in the region.

The District was unable to report the number of alcohol-related injuries for 2005. In 2006 the District reported 416 injuries.

### *Montgomery and Prince George's Counties, Maryland*

Montgomery County saw a decrease in alcohol-related injuries in 2006 (-6.4%). Prince George's County saw an increase of 10.3%.

---

Prince George's County saw an increase of 10.3% in the past year in alcohol-related injuries.

---

For the Maryland Region, alcohol-related motor vehicle injuries increased by 6.1% in the past year and overall injuries decreased by 2.4%. The percentage of alcohol-related injuries increased from 7.9% in 2005 to 8.6% in 2006.

Since 1999, the area has seen impressive decreases in injuries due to alcohol-related crashes (-29.9%). The number of overall injuries decreased by 43.1%. The percentage of alcohol-related injuries in 2006 (8.6%) is slightly lower compared to 1999 (8.7%).

### *Northern Virginia*

Northern Virginia saw an increase in the number of alcohol-related motor vehicle injuries and a slight increase in the percentage of alcohol-related injuries in 2006. Although every jurisdiction saw injury increases, there was wide variation in the degree of increases in data reported by individual jurisdictions in Northern Virginia.

Alcohol-related traffic injuries in Northern Virginia increased by 47.5% in 2006. The percentage of alcohol-related injuries decreased from 13% in 2004 to 8.4% in 2006, but increased from 2005 (7.5%). It is important to note that these aggregate regional totals are made up of rates which vary widely in each jurisdiction. For example, the number of alcohol-related injuries ranges from an increase of 24.5% in Prince William County to an increase of 1000% in the City of Manassas Park.

There was a 4.9% decrease in Northern Virginia alcohol-related injuries between 1999 and 2006. Total injuries were up 6.9% compared to 1999. The percentage of alcohol-related injuries in 2006 (8.4%) falls between the highest in 2003 (14.1%) and lowest reported since 1999 (7.5% in 2005).

**Table 10: Alcohol-Related Traffic Injuries by Jurisdiction, 1999-2006**

|                                 | 1999          | 2000          | 2001         | 2002         | 2003         | 2004         | 2005         | 2006         | Percent Change |               |
|---------------------------------|---------------|---------------|--------------|--------------|--------------|--------------|--------------|--------------|----------------|---------------|
|                                 |               |               |              |              |              |              |              |              | 2005-2006      | 1999-2006#    |
| <b>District of Columbia</b>     | -             | -             | 92           | 213          | 576          | 81           | --           | 416          | --             | 352.2%        |
| Maryland                        |               |               |              |              |              |              |              |              |                |               |
| Montgomery County               | 637           | 463           | 292          | 377          | 660          | 626          | 250          | 234          | -6.4%          | -63.3%        |
| Prince George's County          | 876           | 660           | 586          | 877          | 738          | 653          | 749          | 826          | 10.3%          | -5.7%         |
| <b>MD Regional Total</b>        | <b>1,513</b>  | <b>1,123</b>  | <b>878</b>   | <b>1,254</b> | <b>1,398</b> | <b>1,279</b> | <b>999</b>   | <b>1,060</b> | <b>6.1%</b>    | <b>-29.9%</b> |
| Virginia                        |               |               |              |              |              |              |              |              |                |               |
| Arlington County                | 160           | 185           | 196          | 190          | 166          | 155          | 93           | 154          | 65.6%          | -3.8%         |
| Fairfax County                  | 815           | 663           | 770          | 827          | 803          | 759          | 500          | 705          | 41.0%          | -13.5%        |
| Loudoun County                  | 126           | 112           | 128          | 171          | 154          | 133          | 91           | 138          | 51.6%          | 9.5%          |
| Prince William County           | 281           | 317           | 263          | 284          | 311          | 286          | 237          | 295          | 24.5%          | 5.0%          |
| City of Alexandria              | 93            | 105           | 108          | 128          | 115          | 104          | 39           | 91           | 133.3%         | -2.2%         |
| City of Fairfax                 | 14            | 23            | 7            | 31           | 33           | 23           | 10           | 20           | 100.0%         | 42.9%         |
| City of Falls Church            | 10            | 10            | 4            | 8            | 12           | 10           | 1            | 8            | 700.0%         | -20.0%        |
| City of Manassas                | 28            | 20            | 28           | 37           | 30           | 44           | 19           | 40           | 110.5%         | 42.9%         |
| City of Manassas Park           | 11            | 4             | 6            | 9            | 4            | 4            | 1            | 11           | 1000.0%        | 0.0%          |
| <b>Northern Virginia Total</b>  | <b>1,538</b>  | <b>1,439</b>  | <b>1,510</b> | <b>1,685</b> | <b>1,628</b> | <b>1,518</b> | <b>991</b>   | <b>1,462</b> | <b>47.5%</b>   | <b>-4.9%</b>  |
| <b>DC Metro Regional Total</b>  | <b>3,051*</b> | <b>2,562*</b> | <b>2,480</b> | <b>3,152</b> | <b>3,602</b> | <b>2,878</b> | <b>1,990</b> | <b>2,938</b> | <b>47.6%</b>   | <b>-3.7%</b>  |
| <b>National Parks in Region</b> | --            | --            | --           | 80           | --           | 68           | 32           | 89           | 178.1%         | --            |
| <b>Regional Total Adjusted</b>  | --            | --            | --           | 3,232        | --           | 2,946        | 2,022        | 3,027        | 49.7%          | --            |

\*Regional totals do not include jurisdictions with missing data.

#District of Columbia & DC Regional Total percentage change for 2001-2006

Source: Jurisdictional contacts, see specific contact in Methodology

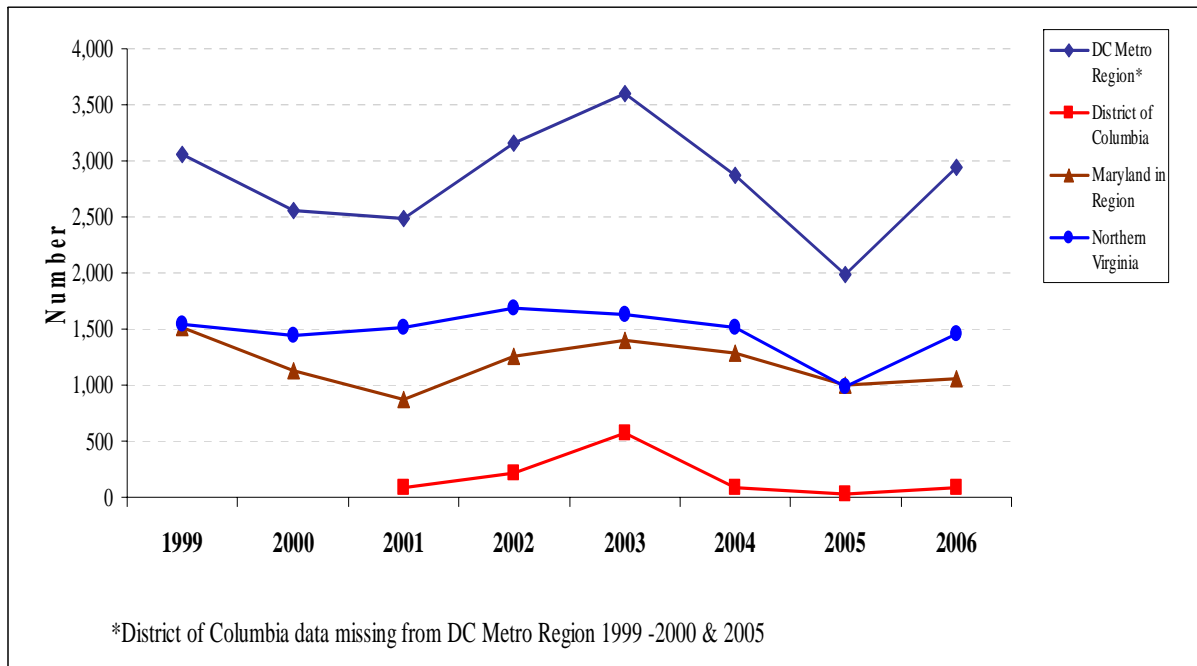
**Table 11: Total Traffic Injuries by Jurisdiction, 1996-2006**

|                                 | 1996           | 1997           | 1998          | 1999          | 2000          | 2001          | 2002          | 2003          | 2004          | 2005          | 2006          | Percent Change |               |
|---------------------------------|----------------|----------------|---------------|---------------|---------------|---------------|---------------|---------------|---------------|---------------|---------------|----------------|---------------|
|                                 |                |                |               |               |               |               |               |               |               |               |               | 2005-2006      | 1999-2006#    |
| <b>District of Columbia</b>     | -              | -              | -             | -             | -             | 9,253         | 5,650         | 4,748         | 5,421         | 5,007         | 4,265         | -14.8%         | -53.9%        |
| Maryland                        |                |                |               |               |               |               |               |               |               |               |               |                |               |
| Montgomery County               | 9,527          | 8,740          | 8,148         | 8,182         | 8,271         | 5,981         | 8,733         | 8,069         | 7,642         | 6,870         | 6,759         | -1.6%          | -29.1%        |
| Prince George's County          | 12,172         | 11,113         | 9,882         | 9,261         | 9,610         | 10,028        | 10,062        | 6,206         | 5,681         | 5,792         | 5,595         | -3.4%          | -54.0%        |
| <b>MD Regional Total</b>        | <b>21,699</b>  | <b>19,853</b>  | <b>18,030</b> | <b>17,443</b> | <b>17,881</b> | <b>16,009</b> | <b>18,795</b> | <b>14,275</b> | <b>13,323</b> | <b>12,662</b> | <b>12,354</b> | <b>-2.4%</b>   | <b>-43.1%</b> |
| Virginia                        |                |                |               |               |               |               |               |               |               |               |               |                |               |
| Arlington County                | 2,024          | 1,929          | 1,955         | 1,946         | 1,894         | 1,966         | 1,658         | 1,274         | 1,408         | 1,220         | 1,374         | 12.6%          | -32.1%        |
| Fairfax County                  | 8,261          | 8,333          | 8,523         | 9,117         | 9,405         | 9,865         | 9,657         | 5,134         | 5,113         | 6,582         | 8,537         | 29.7%          | 3.3%          |
| Loudoun County                  | 1,132          | 1,102          | 1,129         | 1,347         | 1,419         | 1,643         | 1,654         | 1,278         | 899           | 1,206         | 1,711         | 41.9%          | 51.1%         |
| Prince William County           | 3,004          | 2,922          | 2,840         | 2,984         | 3,050         | 3,316         | 3,246         | 2,767         | 2,847         | 2,586         | 3,341         | 29.2%          | 11.2%         |
| City of Alexandria              | 1,371          | 1,323          | 1,380         | 1,407         | 1,309         | 1,382         | 1,395         | 320           | 769           | 853           | 1,317         | 54.4%          | -3.9%         |
| City of Fairfax                 | 280            | 389            | 368           | 332           | 366           | 415           | 383           | 266           | 196           | 205           | 315           | 53.7%          | 12.5%         |
| City of Falls Church            | 142            | 128            | 112           | 146           | 152           | 97            | 118           | 42            | 196           | 180           | 240           | 33.3%          | 69.0%         |
| City of Manassas                | -              | 350            | 365           | 323           | 345           | 439           | 390           | 399           | 232           | 403           | 448           | 11.2%          | --            |
| City of Manassas Park           | -              | 41             | 20            | 80            | 52            | 56            | 45            | 67            | 33            | 23            | 43            | 87.0%          | --            |
| <b>Northern Virginia Total</b>  | <b>16,214*</b> | <b>16,517</b>  | <b>16,692</b> | <b>17,682</b> | <b>17,992</b> | <b>19,179</b> | <b>18,546</b> | <b>11,547</b> | <b>11,693</b> | <b>13,258</b> | <b>17,326</b> | <b>30.7%</b>   | <b>6.9%</b>   |
| <b>DC Metro Regional Total</b>  | <b>37,913*</b> | <b>36,370*</b> | <b>34,722</b> | <b>35,125</b> | <b>35,873</b> | <b>44,441</b> | <b>42,991</b> | <b>30,570</b> | <b>30,437</b> | <b>30,927</b> | <b>33,945</b> | <b>9.8%</b>    | <b>-10.5%</b> |
| <b>National Parks in Region</b> | --             | --             | --            | --            | --            | --            | 911           | --            | 747           | 703           | 519           | -26.2%         | --            |
| <b>Regional Total Adjusted</b>  | --             | --             | --            | --            | --            | --            | 43,902        | --            | 31,184        | 31,630        | 34,464        | 9.0%           | --            |

\*Regional totals do not include jurisdictions with missing data.

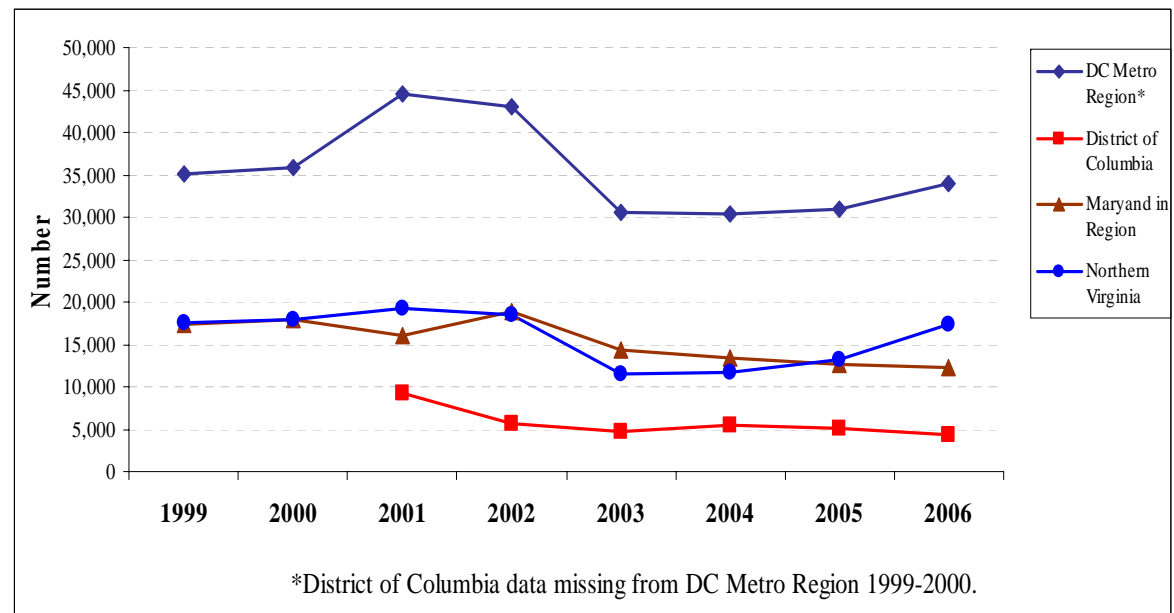
#District of Columbia & Regional percentage change 2001-2006.

Source: Jurisdictional contacts, see specific contact in Methodology



**Figure 10: Number of Alcohol-Related Traffic Injuries Over Time, By Region, 1999-2006**

**Figure 11: Total Number of Motor Vehicle Injuries Over Time, By Region, 1999-2006**





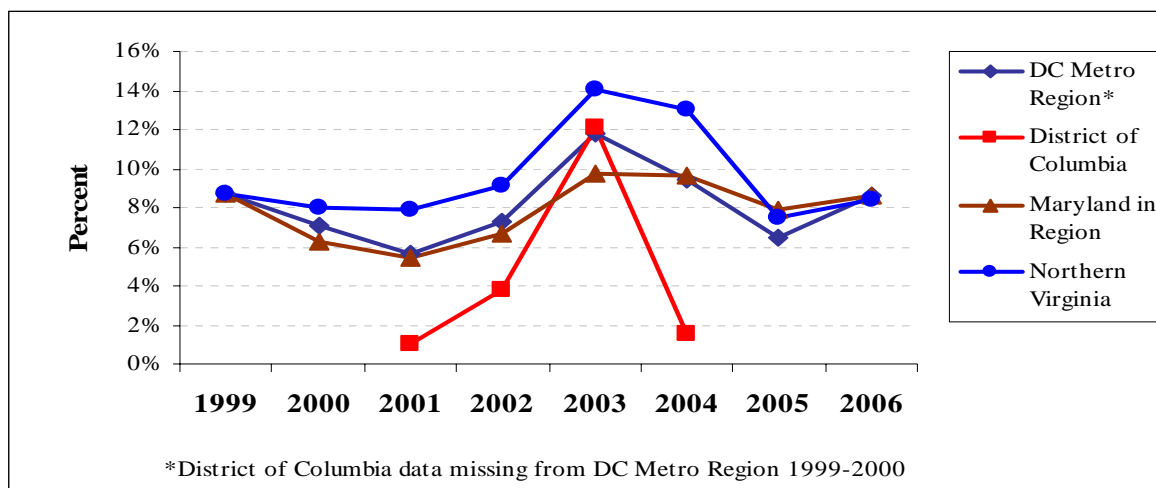
**Table 12: Percentage of all Traffic Injuries that were Alcohol Related, 1999-2006**

|                                 | 1999         | 2000         | 2001        | 2002        | 2003         | 2004         | 2005        | 2006        |
|---------------------------------|--------------|--------------|-------------|-------------|--------------|--------------|-------------|-------------|
| <b>District of Columbia</b>     | -            | -            | 1.0%        | 3.8%        | 12.1%        | 1.5%         | --          | 9.8%        |
| Maryland                        |              |              |             |             |              |              |             |             |
| Montgomery County               | 7.8%         | 5.6%         | 4.9%        | 4.3%        | 8.2%         | 8.2%         | 3.6%        | 3.5%        |
| Prince George's County          | 9.5%         | 6.9%         | 5.8%        | 8.7%        | 11.9%        | 11.5%        | 12.9%       | 14.8%       |
| <b>MD Regional Total</b>        | <b>8.7%</b>  | <b>6.3%</b>  | <b>5.5%</b> | <b>6.7%</b> | <b>9.8%</b>  | <b>9.6%</b>  | <b>7.9%</b> | <b>8.6%</b> |
| Virginia                        |              |              |             |             |              |              |             |             |
| Arlington County                | 8.2%         | 9.8%         | 10.0%       | 11.5%       | 13.0%        | 11.0%        | 7.6%        | 11.2%       |
| Fairfax County                  | 8.9%         | 7.0%         | 7.8%        | 8.6%        | 15.6%        | 14.8%        | 7.6%        | 8.3%        |
| Loudoun County                  | 9.4%         | 7.9%         | 7.8%        | 10.3%       | 12.1%        | 14.8%        | 7.5%        | 8.1%        |
| Prince William County           | 9.4%         | 10.4%        | 7.9%        | 8.7%        | 11.2%        | 10.0%        | 9.2%        | 8.8%        |
| City of Alexandria              | 6.6%         | 8.0%         | 7.8%        | 9.2%        | 35.9%        | 13.5%        | 4.6%        | 6.9%        |
| City of Fairfax                 | 4.2%         | 6.3%         | 1.7%        | 8.1%        | 12.4%        | 11.7%        | 4.9%        | 6.3%        |
| City of Falls Church            | 6.8%         | 6.6%         | 4.1%        | 6.8%        | 28.6%        | 5.1%         | 0.6%        | 3.3%        |
| City of Manassas                | 8.7%         | 5.8%         | 6.4%        | 9.5%        | 7.5%         | 19.0%        | 4.7%        | 8.9%        |
| City of Manassas Park           | 13.8%        | 7.7%         | 10.7%       | 20.0%       | 6.0%         | 12.1%        | 4.3%        | 25.6%       |
| <b>Northern Virginia Total</b>  | <b>8.7%</b>  | <b>8.0%</b>  | <b>7.9%</b> | <b>9.1%</b> | <b>14.1%</b> | <b>13.0%</b> | <b>7.5%</b> | <b>8.4%</b> |
| <b>DC Metro Regional Total</b>  | <b>8.7%*</b> | <b>7.1%*</b> | <b>5.6%</b> | <b>7.3%</b> | <b>11.8%</b> | <b>9.5%</b>  | <b>6.4%</b> | <b>8.7%</b> |
| <b>National Parks in Region</b> | --           | --           | --          | 7.4%        | --           | 9.1%         | 4.6%        | 17.1%       |
| <b>Regional Total Adjusted</b>  | <b>8.7%*</b> | <b>7.1%*</b> | <b>5.6%</b> | <b>7.4%</b> | <b>11.8%</b> | <b>9.4%</b>  | <b>6.4%</b> | <b>8.8%</b> |

\*Regional totals do not include jurisdictions with missing data.

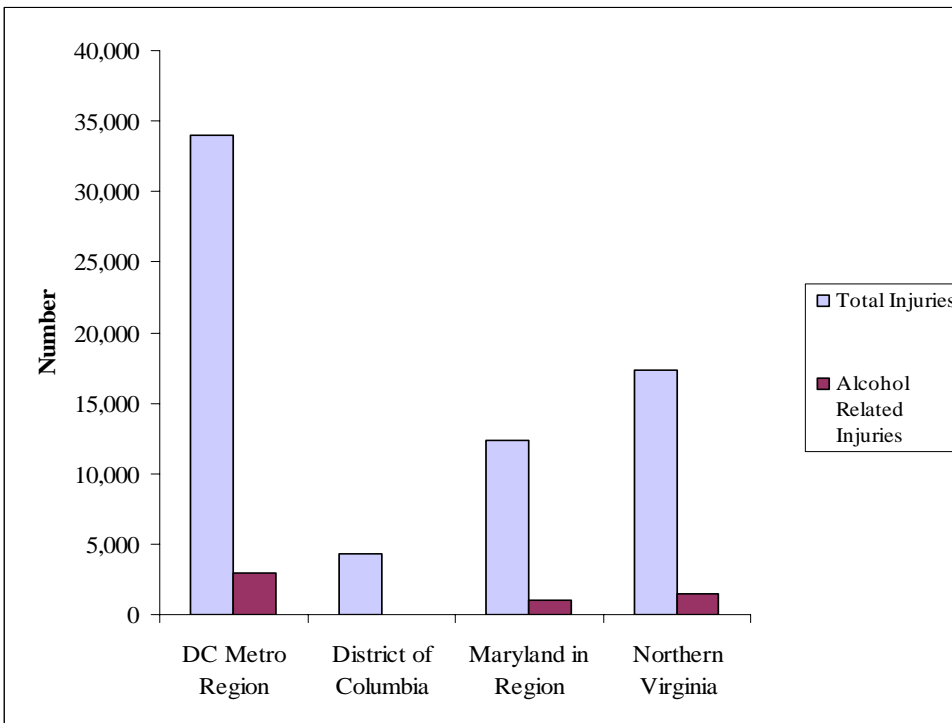
Source: Jurisdictional contacts, see specific contact in Methodology

**Figure 12: Percentage of Total Injuries Due to Crashes Involving Impaired Drivers Over Time, By Region, 1999-2006**



**Table 13: SNAPSHOT! Motor Vehicle Injuries in 2006**

|                                 | <b>Total Injuries</b> | <b>Alcohol Related Injuries</b> | <b>Percentage of Total Injuries that were Alcohol Related</b> | <b>Percent Change Alcohol Related Injuries, 2005-2006</b> |
|---------------------------------|-----------------------|---------------------------------|---|---|
| <b>District of Columbia</b>     | <b>4,265</b>          | <b>416</b>                      | <b>9.8%</b>   | --  |
| Maryland                        |                       |                                 |   |   |
| Montgomery County               | 6,759                 | 234                             | 3.5%  | -6.4%   |
| Prince George's County          | 5,595                 | 826                             | 14.8%   | 10.3%   |
| <b>MD Regional Total</b>        | <b>12,354</b>         | <b>1,060</b>                    | <b>8.6%</b>   | <b>6.1%</b>   |
| Virginia                        |                       |                                 |   |   |
| Arlington County                | 1,374                 | 154                             | 11.2%   | 65.6%   |
| Fairfax County                  | 8,537                 | 705                             | 8.3%  | 41.0%   |
| Loudoun County                  | 1,711                 | 138                             | 8.1%  | -31.6%  |
| Prince William County           | 3,341                 | 295                             | 8.8%  | 24.5%   |
| City of Alexandria              | 1,317                 | 91                              | 6.9%  | 133.3%  |
| City of Fairfax                 | 315                   | 20                              | 6.3%  | 100.0%  |
| City of Falls Church            | 240                   | 8                               | 3.3%  | 700.0%  |
| City of Manassas                | 448                   | 40                              | 8.9%  | 110.5%  |
| City of Manassas Park           | 43                    | 11                              | 25.6%   | 1000.0%   |
| <b>Northern Virginia Total</b>  | <b>17,326</b>         | <b>1,462</b>                    | <b>8.4%</b>   | <b>47.5%</b>  |
| <b>DC Metro Regional Total</b>  | <b>33,945</b>         | <b>2,938</b>                    | <b>8.7%</b>   | <b>47.6%</b>  |
| <b>National Parks in Region</b> | <b>519</b>            | <b>68</b>                       | <b>13.1%</b>  | <b>178.1%</b>   |
| <b>Regional Total Adjusted</b>  | <b>34,464</b>         | <b>3,006</b>                    | <b>8.7%</b>   | <b>49.7%</b>  |

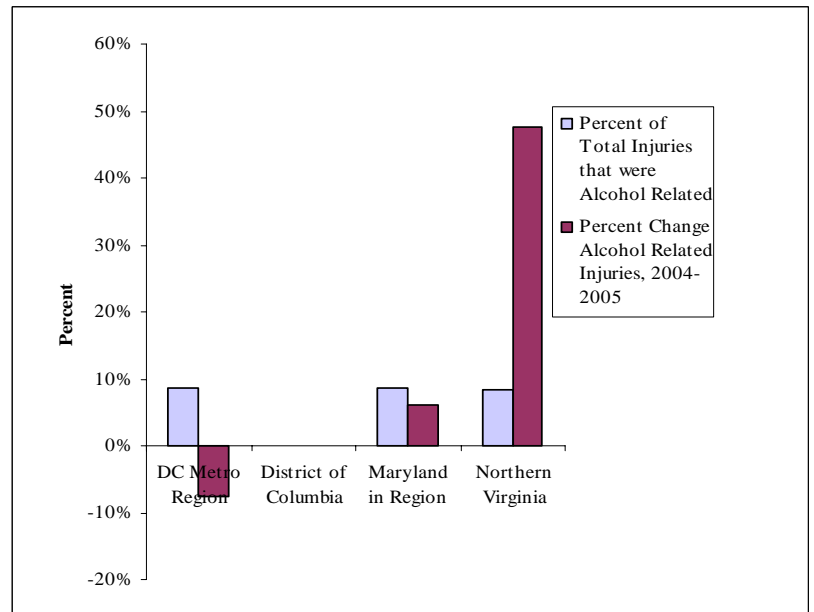


**Figure 13A: SNAPSHOT!  
Number of Total and Alcohol-Related Motor Vehicle Injuries, By Region, 2006**

Data for the District of Columbia not available for 2005

^Percentage change calculation does not include 2003 or 2004 data for DC jurisdictional contacts, see specific contact in agency

**Figure 13B: SNAPSHOT!  
Percentage of Injuries: Alcohol-related and change, 2003-2006**



## TRAFFIC ARRESTS

### Washington Metro Region

Alcohol-related arrests decreased across the Washington Metro region in 2006. The number of alcohol-related arrests had remained fairly consistent for the previous three years, but has trended lower over the past ten years.

---

Alcohol-related arrests decreased 2.5% across the Washington Metro region in 2006.

---

The Washington Metro region reported 14,846 alcohol-related driving arrests this past year. This represents a decrease of 2.5% since 2005. Arrests in 2006 were significantly lower than a number of previous years that saw arrest rates well above 15,000, and many of those years did not include National Park Police data. Overall, the number of alcohol-related arrests is down 8.5% since 1995.

The reported arrests of people under 21 years, represents 5.6% of the overall arrests (853 of 14,846 arrests). This represents an increase in the percentage of juvenile arrests over last year (5.6% in 2006 vs. 2.4% in 2005). Caution must be used in the analysis of data on juveniles due to inconsistency in definitions, and the recording and maintenance of data within and between jurisdictions.

### Regional Jurisdictions

#### *District of Columbia*

The District of Columbia reported 4 driving arrests of people under 21 years of age. There were 1600 arrests for impaired driving; a decrease of 11.5% from 2005. This is 47.1% fewer arrests in 2006 than in 1995 when reporting began.

*Montgomery and Prince George's Counties, Maryland*

Prince George's County reported a 13.5% decrease in alcohol-related driving arrests. Montgomery County alcohol-related arrests increased by 4.4%.

---

Prince George's County saw a 13.5% decrease in alcohol-related driving arrests.

---

Combined, the Maryland counties saw a 1.9% decrease in alcohol-related driving arrests compared with 2005. Arrests in the region have decreased 6.6% since 1995.

*Northern Virginia*

Northern Virginia reported a small decrease in the number of alcohol-related driving arrests over the past year. Again, the regional total does not tell the full story as individual jurisdictions had widely varying experiences. The percent change in arrests from 2005 to 2006 ranged from a significant decrease in Fairfax City (-37.7%) to a relatively high increase (58.8%) in the city of Falls Church.

---

Northern VA regional data does not tell the full story as individual jurisdictions had widely varying experiences.

---

Northern Virginia as a whole saw a 0.8% decrease in alcohol-related driving arrests in the past year. However, compared to 1995, alcohol-related driving arrests have increased 8.1%. Ten year trends in individual VA counties vary widely, from a 37.8% increase in Loudoun County to a 59.7% decrease in the city of Fairfax.

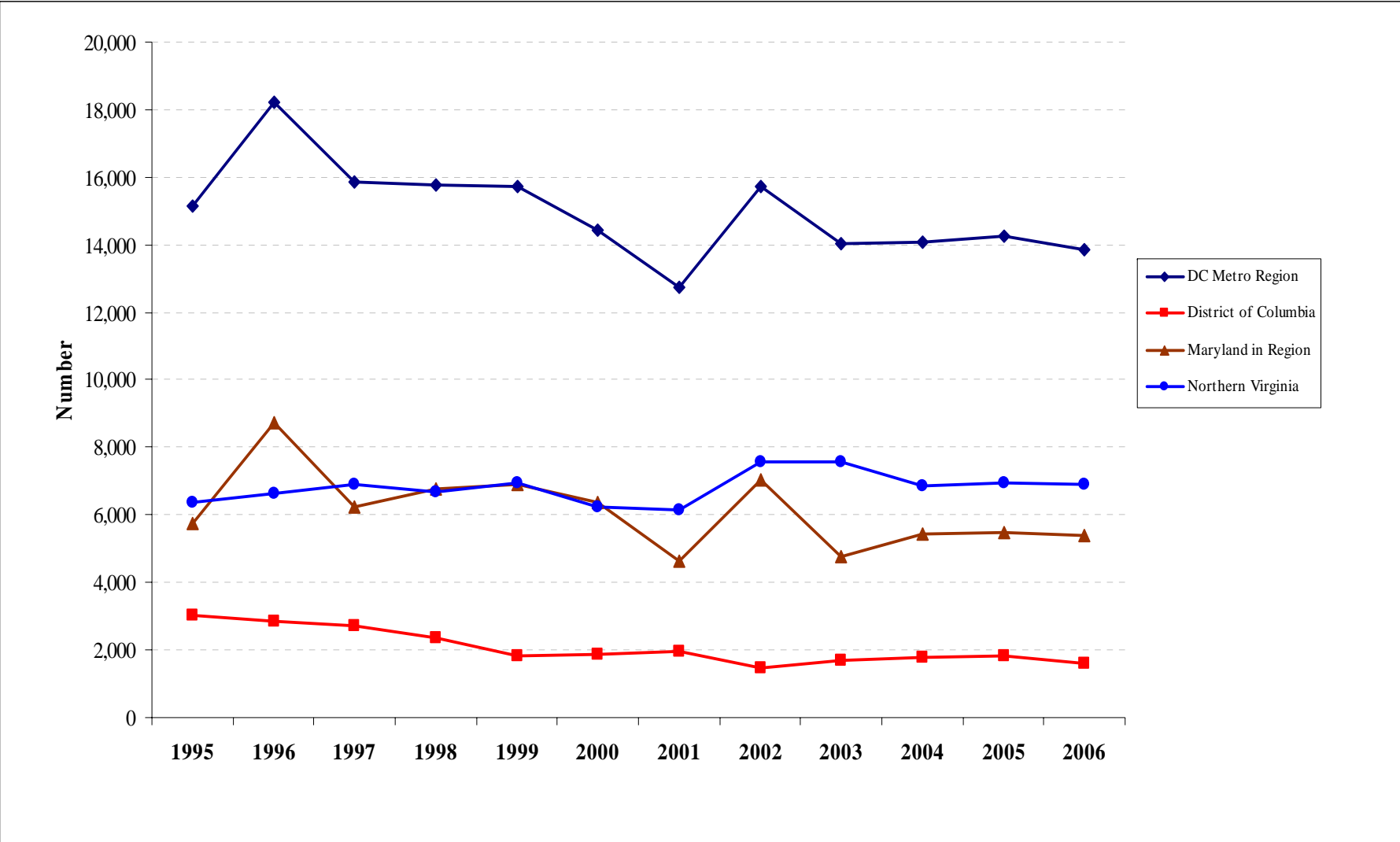
**Table 14: Total Alcohol Related Driving Arrests by Jurisdiction, 1995-2006**

|                                 | 1995           | 1996           | 1997          | 1998          | 1999          | 2000          | 2001          | 2002          | 2003          | 2004          | 2005          | 2006          | Percent Change |               |
|---------------------------------|----------------|----------------|---------------|---------------|---------------|---------------|---------------|---------------|---------------|---------------|---------------|---------------|----------------|---------------|
|                                 |                |                |               |               |               |               |               |               |               |               |               |               | 2004-2006      | 1995-2006     |
| <b>District of Columbia</b>     | <b>3,025</b>   | <b>2,854</b>   | <b>2,714</b>  | <b>2,350</b>  | <b>1,828</b>  | <b>1,850</b>  | <b>1,967</b>  | <b>1,492</b>  | <b>1,711</b>  | <b>1,780</b>  | <b>1,807</b>  | <b>1,600</b>  | <b>-11.5%</b>  | <b>-47.1%</b> |
| Maryland                        |                |                |               |               |               |               |               |               |               |               |               |               |                |               |
| Montgomery County               | 3,407          | 4,168          | 3,847         | 4,445         | 4,599         | 4,436         | 3,420         | 3,151         | 3,148         | 3,705         | 3,559         | 3,714         | 4.4%           | 9.0%          |
| Prince George's County          | 2,354          | 4,553          | 2,400         | 2,321         | 2,315         | 1,933         | 1,199         | 3,877         | 1,598         | 1,743         | 1,927         | 1,667         | -13.5%         | -29.2%        |
| <b>MD Regional Total</b>        | <b>5,761</b>   | <b>8,721</b>   | <b>6,247</b>  | <b>6,766</b>  | <b>6,914</b>  | <b>6,369</b>  | <b>4,619</b>  | <b>7,028</b>  | <b>4,746</b>  | <b>5,448</b>  | <b>5,486</b>  | <b>5,381</b>  | <b>-1.9%</b>   | <b>-6.6%</b>  |
| Virginia                        |                |                |               |               |               |               |               |               |               |               |               |               |                |               |
| Arlington County                | 890            | 1,041          | 1,027         | 1,037         | 921           | 817           | 625           | 696           | 715           | 547           | 574           | 688           | 19.9%          | -22.7%        |
| Fairfax County                  | 2,714          | 3,075          | 3,033         | 2,754         | 2,858         | 2,475         | 2,451         | 2,969         | 3,350         | 2,861         | 3,015         | 2,769         | -8.2%          | 2.0%          |
| Loudoun County                  | 447            | 360            | 272           | 220           | 304           | 386           | 519           | 816           | 682           | 773           | 694           | 616           | -11.2%         | 37.8%         |
| Prince William County           | 1,313          | 1,250          | 1,461         | 1,635         | 1,967         | 1,517         | 1,571         | 1,525         | 1,656         | 1,621         | 1,611         | 1,794         | 11.4%          | 36.6%         |
| Alexandria City                 | 528            | 455            | 420           | 394           | 346           | 293           | 343           | 427           | 476           | 394           | 425           | 479           | 12.7%          | -9.3%         |
| Fairfax City                    | 414            | 386            | 357           | 325           | 269           | 208           | 179           | 244           | 242           | 273           | 268           | 167           | -37.7%         | -59.7%        |
| Falls Church City               | 66             | 74             | 54            | 53            | 47            | 84            | 74            | 45            | 40            | 40            | 34            | 54            | 58.8%          | -18.2%        |
| Manassas City                   | -              | -              | 214           | 209           | 208           | 349           | 276           | 348           | 298           | 284           | 219           | 218           | -0.5%          | n/a           |
| Manassas Park City              | -              | -              | 77            | 46            | 45            | 92            | 107           | 155           | 126           | 71            | 110           | 106           | -3.6%          | n/a           |
| <b>Northern Virginia Total</b>  | <b>6,372*</b>  | <b>6,641*</b>  | <b>6,915</b>  | <b>6,673</b>  | <b>6,965</b>  | <b>6,221</b>  | <b>6,145</b>  | <b>7,225</b>  | <b>7,585</b>  | <b>6,864</b>  | <b>6,950</b>  | <b>6,891</b>  | <b>-0.8%</b>   | <b>8.1%</b>   |
| <b>DC Metro Regional Total</b>  | <b>15,158*</b> | <b>18,216*</b> | <b>15,876</b> | <b>15,789</b> | <b>15,707</b> | <b>14,440</b> | <b>12,731</b> | <b>15,745</b> | <b>14,042</b> | <b>14,092</b> | <b>14,243</b> | <b>13,872</b> | <b>-2.6%</b>   | <b>-8.5%</b>  |
| <b>National Parks in Region</b> | --             | --             | --            | --            | --            | --            | --            | 564           | --            | 839           | 989           | 974           | -1.5%          | --            |
| <b>Regional Total Adjusted</b>  | --             | --             | --            | --            | --            | --            | --            | 16,309        | --            | 14,931        | 15,232        | 14,846        | -2.5%          | --            |

\*Regional totals do not include jurisdictions with missing data.

Source: Jurisdictional contacts, see specific contact in Methodology

**Figure 14: Total Alcohol-Related Arrest Trends, All Ages, By Region, 1994-2006**



**Table 15: Total Alcohol Related Driving Arrests of Juveniles and Adults by Jurisdiction, 2000-2006**

|                                 | 2001       |              |               | 2002       |              |               | 2003       |               |               | 2004       |               |               | 2005       |               |          | 2006       |              |               |
|---------------------------------|------------|--------------|---------------|------------|--------------|---------------|------------|---------------|---------------|------------|---------------|---------------|------------|---------------|----------|------------|--------------|---------------|
|                                 | ≤ 18 years | > 18 years   | Total         | ≤ 18 years | > 18 years   | Total         | ≤ 18 years | > 18 years    | Total         | ≤ 18 years | > 18 years    | Total         | ≤ 18 years | > 18 years    | Total    | ≤ 18 years | > 18 years   | Total         |
| <b>District of Columbia</b>     | <b>34</b>  | <b>1,933</b> | <b>1,967</b>  | <b>8</b>   | <b>1,484</b> | <b>1,492</b>  | <b>23</b>  | <b>1,688</b>  | <b>1,711</b>  | <b>36</b>  | <b>1,744</b>  | <b>1,780</b>  | <b>0</b>   | <b>0</b>      | <b>0</b> | --         | --           | <b>1,600</b>  |
| Maryland                        |            |              |               |            |              |               |            |               |               |            |               |               |            |               |          |            |              |               |
| Montgomery County*              | 46         | 3,374        | 3,420         | 56         | 3,095        | 3,151         | 41         | 3,107         | 3,148         | 363        | 3,342         | 3,705         | 285        | -285          | 0        | 125        | 3,589        | 3,714         |
| Prince George's County#         |            |              | 1,199         |            |              | 3,877         | 7          | 1,591         | 1,598         | 2          | 1,741         | 1,743         | 3          | -3            | 0        | 4          | 1,663        | 1,667         |
| <b>MD Regional Total</b>        |            |              | <b>4,619</b>  |            |              | <b>7,028</b>  | <b>48</b>  | <b>4,698</b>  | <b>4,746</b>  | <b>365</b> | <b>5,083</b>  | <b>5,448</b>  | <b>288</b> | <b>-288</b>   | <b>0</b> | <b>129</b> | <b>5,252</b> | <b>5,381</b>  |
| Virginia                        |            |              |               |            |              |               |            |               |               |            |               |               |            |               |          |            |              |               |
| Arlington County                | 4          | 621          | 625           | 4          | 692          | 696           | 0          | 715           | 715           | 3          | 542           | 545           | 0          | 0             | 0        | 3          | 685          | 688           |
| Fairfax County                  | 32         | 2,419        | 2,451         | 49         | 2,920        | 2,969         | 54         | 3,296         | 3,350         | 20         | 2,841         | 2,861         | 28         | -28           | 0        |            |              | 2,769         |
| Loudoun County                  | 9          | 510          | 519           | 7          | 809          | 816           | --         | --            | 682           | 7          | 589           | 596           | 23         | -23           | 0        | 70         | 546          | 616           |
| Prince William County*          | 31         | 1,540        | 1,571         | 19         | 1,506        | 1,525         | 16         | 1,640         | 1,656         | 18         | 1,903         | 1,921         | 12         | -12           | 0        | 27         | 1,767        | 1,794         |
| Alexandria City                 | 1          | 342          | 343           | 8          | 419          | 427           | 1          | 475           | 476           | 2          | 392           | 394           | 0          | 0             | 0        | 1          | 478          | 479           |
| Fairfax City                    | 1          | 178          | 179           | 4          | 240          | 244           | 3          | 239           | 242           | 1          | 272           | 273           | 3          | -3            | 0        | 1          | 166          | 167           |
| Falls Church City               | 2          | 72           | 74            | 0          | 45           | 45            | 1          | 39            | 40            | 1          | 34            | 35            | 0          | 0             | 0        | 2          | 52           | 54            |
| Manassas City                   | 3          | 273          | 278           | 7          | 341          | 348           | 2          | 296           | 298           | 0          | 284           | 284           | 2          | -2            | 0        | 1          | 217          | 218           |
| Manassas Park City              | 3          | 104          | 107           | 2          | 153          | 155           | 0          | 126           | 126           | 1          | 8             | 9             | 0          | 0             | 0        | 1          | 105          | 106           |
| <b>Northern Virginia Total</b>  | <b>86</b>  | <b>6,059</b> | <b>6,145</b>  | <b>100</b> | <b>7,125</b> | <b>7,225</b>  | <b>77</b>  | <b>6,826</b>  | <b>7,585</b>  | <b>53</b>  | <b>6,865</b>  | <b>6,918</b>  | <b>68</b>  | <b>-68</b>    | <b>0</b> | <b>106</b> | <b>4,016</b> | <b>6,891</b>  |
| <b>DC Metro Regional Total^</b> |            |              | <b>12,731</b> |            |              | <b>15,745</b> | <b>148</b> | <b>13,212</b> | <b>14,042</b> | <b>462</b> | <b>14,523</b> | <b>14,146</b> | <b>462</b> | <b>14,523</b> | <b>0</b> | <b>235</b> | <b>9,268</b> | <b>13,872</b> |
| <b>National Parks in Region</b> | --         | --           | --            | --         | --           | --            | --         | --            | --            | <b>8</b>   | <b>831</b>    | <b>839</b>    | <b>6</b>   | <b>-6</b>     | <b>0</b> | <b>5</b>   | <b>84</b>    | <b>89</b>     |
| <b>Regional Total Adjusted</b>  | <b>86</b>  | <b>6,059</b> | <b>6,145</b>  | <b>100</b> | <b>7,125</b> | <b>7,225</b>  | <b>77</b>  | <b>6,826</b>  | <b>25,147</b> | <b>61</b>  | <b>7,696</b>  | <b>14,985</b> | <b>61</b>  | <b>7,696</b>  | <b>0</b> | <b>240</b> | <b>9,352</b> | <b>13,961</b> |

^DC Metro Regional totals for under and over age 18 years not included for years with missing juvenile data

\*Montgomery County data for persons under the age of 21 years determined to be driver.

#Prince George's County data reflects number of arrests for persons under the age of 24 years.



## IMPACT ON OUR YOUTH

The illegal use of alcohol by minors contributes significantly to juvenile delinquency problems, including driving while under the influence. Motor vehicle crashes kill and injure more young people than any other cause, and alcohol is a factor in many of these cases. The risk from alcohol may be compounded by other factors that raise the danger level. Youths drink in isolated places (parks, homes, etc.) and in a narrow time period making youth DUI enforcement difficult. Youth driving may be coupled with other risky behaviors, and being inexperienced drivers increases their likelihood of experiencing an alcohol-impaired crash.

(source: <http://www.nhtsa.dot.gov/people/injury/alcohol/juveniledui/>).

Several jurisdictions were unable to provide data on youth for this report. Results are presented for the Washington Metro region with the reminder that not all jurisdictions are represented.

---

13.3% of all youth traffic fatalities in the Washington Region were related to alcohol.

---

### Fatalities

In the Washington Metro region there was a decrease in juvenile alcohol-related fatalities reported in 2006 (from 13 fatalities in 2005 to 8 in 2006). Just over thirteen percent (13.3%) of juvenile traffic fatalities in 2006 were alcohol-related. This includes youth who were driving, passengers, and pedestrians.

### Crashes, Injuries, and Arrests

In the Washington Metropolitan region, youth under the age of 21 were involved in 15.5% of all alcohol-related crashes. Note that this does not include data from the District of Columbia and three Northern Virginia jurisdictions.

---

15.5% of alcohol-related traffic injuries occurred in people under age 21 in the Washington Metro region.

---

Data regarding youth injured in alcohol-related traffic injuries was unavailable from one jurisdiction. Of those reporting, 15.5% of injuries occurred in people under age 21 years; a slight increase over 2005 (15.2%).

With all jurisdictions reporting, 4.4% of drivers arrested in 2006 for alcohol impaired driving in the Region were under age, a slight increase from 2005 (2.4%).

**Table 16: Motor Vehicle Fatalities for Persons Under 21 Years of Age By Jurisdiction, 2005-2006**

|                                 | 2005             |                            |  | 2006             |                            |  | Percent Change, 2005-2006 |                            |
|---------------------------------|------------------|----------------------------|--|------------------|----------------------------|--|---------------------------|----------------------------|
|                                 | Total Fatalities | Alcohol-related Fatalities | % of Total Juvenile Fatalities that were Alcohol-related | Total Fatalities | Alcohol-related Fatalities | % of Total Juvenile Fatalities that were Alcohol-related | Total Fatalities          | Alcohol-related Fatalities |
| <b>District of Columbia</b>     | <b>5</b>         | <b>3</b>                   | <b>60.0%</b>   | <b>11</b>        | <b>0</b>                   | <b>0.0%</b>  | <b>120.0%</b>             | <b>-100.0%</b>             |
| Maryland                        |                  |                            |  |                  |                            |  |                           |                            |
| Montgomery County               | 6                | 1                          |  | 9                | 2                          | 22.2%  | 50.0%                     |                            |
| Prince George's County          | 21               | 2                          |  | 13               | 0                          | 0.0%   | -38.1%                    |                            |
| <b>MD Regional Total</b>        | <b>27</b>        | <b>3</b>                   | <b>11.1%</b>   | <b>22</b>        | <b>2</b>                   | <b>9.1%</b>  | <b>-18.5%</b>             | <b>-33.3%</b>              |
| Virginia                        |                  |                            |  |                  |                            |  |                           |                            |
| Arlington County                | 2                | 0                          |  | 0                | 0                          | n/a  | n/a                       |                            |
| Fairfax County                  | 11               | 6                          |  | 15               | 6                          | 40.0%  | 36.4%                     |                            |
| Loudoun County                  | 2                | 0                          |  | 6                | 0                          | n/a  | n/a                       |                            |
| Prince William County           | 2                | 1                          |  | 5                | 0                          | 0.0%   | 150.0%                    |                            |
| City of Alexandria              | 0                | 0                          |  | 0                | 0                          | n/a  | n/a                       |                            |
| City of Fairfax                 | 0                | 0                          |  | 1                | 0                          | 0.0%   | n/a                       |                            |
| City of Falls Church            | 0                | 0                          |  | 0                | 0                          | n/a  | n/a                       |                            |
| City of Manassas                | 0                | 0                          |  | 0                | 0                          | n/a  | n/a                       |                            |
| City of Manassas Park           | 0                | 0                          |  | 0                | 0                          | n/a  | n/a                       |                            |
| <b>Northern Virginia Total</b>  | <b>17</b>        | <b>7</b>                   | <b>41.2%</b>   | <b>27</b>        | <b>6</b>                   | <b>22.2%</b>   | <b>58.8%</b>              | <b>-14.3%</b>              |
| <b>DC Metro Regional Total</b>  | <b>49</b>        | <b>13</b>                  | <b>26.5%</b>   | <b>60</b>        | <b>8</b>                   | <b>13.3%</b>   | <b>22.4%</b>              | <b>-38.5%</b>              |
| <b>National Parks in Region</b> | <b>0</b>         | <b>0</b>                   | <b>0.0%</b>  | <b>0</b>         | <b>0</b>                   | <b>0.0%</b>  | <b>n/a</b>                | <b>n/a</b>                 |
| <b>Regional Total Adjusted</b>  | <b>49</b>        | <b>13</b>                  | <b>26.5%</b>   | <b>60</b>        | <b>8</b>                   | <b>13.3%</b>   | <b>22.4%</b>              | <b>-38.5%</b>              |

^Regional Totals do not include jurisdictions with missing data

\*Montgomery County data for persons under the age of 21 years determined to be driver and "at fault" for accident

#Prince George's County data represents persons under the age of 24 years

Source: Jurisdictional contacts, see specific contact in Methodology

**Table 17: Alcohol-Related Motor Vehicle Injuries for Persons Under 21 Years of Age, 2005-2006**

|                                 | 2005               |  | 2006               |  |
|---------------------------------|--------------------|--|--------------------|--|
|                                 | Number of Injuries | Percentage of Alcohol-related Injuries, All Ages | Number of Injuries | Percentage of Alcohol-related Injuries, All Ages |
| <b>District of Columbia</b>     | <b>0</b>           | <b>--</b>  | <b>0</b>           | <b>--</b>  |
| Maryland                        |                    |  |                    |  |
| Montgomery County               | 43                 | 17.2%  | 27                 | 11.5%  |
| Prince George's County          | 134                | 17.9%  | 93                 | 11.3%  |
| <b>MD Regional Total</b>        | <b>177</b>         | <b>17.7%</b>                                     | <b>120</b>         | <b>11.3%</b>                                     |
| Virginia                        |                    |  |                    |  |
| Arlington County                | --                 | #VALUE!  | 24                 | 15.6%  |
| Fairfax County                  | 80                 | 16.0%  | 87                 | 12.3%  |
| Loudoun County                  | --                 | #VALUE!  | 28                 | 20.3%  |
| Prince William County           | 46                 | 19.4%  | 47                 | 15.9%  |
| City of Alexandria              | --                 | #VALUE!  | 0                  | 0.0%   |
| City of Fairfax                 | 0                  | 0.0%   | 0                  | 0.0%   |
| City of Falls Church            | 0                  | 0.0%   | 0                  | 0.0%   |
| City of Manassas                | 0                  | 0.0%   | 0                  | 0.0%   |
| City of Manassas Park           | 0                  | 0.0%   | 0                  | 0.0%   |
| <b>VA Regional Total</b>        | <b>126</b>         | <b>12.7%</b>                                     | <b>186</b>         | <b>12.7%</b>                                     |
| <b>DC Metro Regional Total</b>  | <b>303</b>         | <b>15.2%</b>                                     | <b>306</b>         | <b>10.4%</b>                                     |
| <b>National Parks in Region</b> | <b>--</b>          | <b>0.0%</b>                                      | <b>0</b>           | <b>0.0%</b>                                      |
| <b>Regional Total Adjusted</b>  | <b>303</b>         | <b>15.0%</b>                                     | <b>306</b>         | <b>10.1%</b>                                     |

<sup>+</sup>Data from 2002 only available at regional level. Completeness of data unknown.

<sup>^</sup>Regional Totals do not include jurisdictions with missing data.

<sup>\*</sup>Montgomery County data for persons under the age of 21 years determined to be driver.

<sup>#</sup>Prince George's County data represents persons under the age of 24 years.

Source: Jurisdictional contacts, see specific contact in Methodology

**Table 18: Motor Vehicle Arrests for Persons Under 21 Years of Age By Region, 2005-2006**

|                                 | 2005              |   | 2006              |   |
|---------------------------------|-------------------|---|-------------------|---|
|                                 | Number of Arrests | Percentage of Alcohol-related Arrests, All Ages | Number of Arrests | Percentage of Alcohol-related Arrests, All Ages |
| <b>District of Columbia</b>     | --                | --  | <b>4</b>          | <b>0.2%</b>                                     |
| Maryland                        |                   |   |                   |   |
| Montgomery County               | 285               |   | 468               | 13.1%   |
| Prince George's County          | 3                 |   | 15                | 0.8%  |
| <b>MD Regional Total</b>        | <b>288</b>        | <b>5.2%</b>                                     | <b>483</b>        | <b>8.8%</b>                                     |
| Virginia                        |                   |   |                   |   |
| Arlington County                | 0                 |   | 40                | 7.0%  |
| Fairfax County                  | 28                |   | 209               | 6.9%  |
| Loudoun County                  | 23                |   | 70                | 10.1%   |
| Prince William County*          | 12                |   | 37                | 2.3%  |
| City of Alexandria              | 0                 |   | 1                 | 0.2%  |
| City of Fairfax                 | 3                 |   | 1                 | 0.4%  |
| City of Falls Church            | 0                 |   | 2                 | 5.9%  |
| City of Manassas                | 2                 |   | 0                 | 0.0%  |
| City of Manassas Park           | 0                 |   | 1                 | 0.9%  |
| <b>VA Regional Total</b>        | <b>68</b>         | <b>1.0%</b>                                     | <b>361</b>        | <b>5.2%</b>                                     |
| <b>DC Metro Regional Total</b>  | <b>356</b>        | <b>2.5%</b>                                     | <b>848</b>        | <b>6.0%</b>                                     |
| <b>National Parks in Region</b> | <b>6</b>          | <b>0.6%</b>                                     | <b>5</b>          | <b>0.5%</b>                                     |
| <b>Regional Total Adjusted</b>  | <b>362</b>        | <b>2.4%</b>                                     | <b>853</b>        | <b>5.6%</b>                                     |

^Regional Totals do not include jurisdictions with missing data

\*Montgomery County data for persons under the age of 21 years determined to be driver and "at fault" for accident

#Prince George's County data represents persons under the age of 24 years

Source: Jurisdictional contacts, see specific contact in Methodology

**Table 19A: SNAPSHOT! Motor Vehicle Fatalities for Persons Under 21 Years of Age By Region, 2006**

|                                 | <b>Total Juvenile Fatalities</b> | <b>Alcohol-related Fatalities</b> | <b>% of Total Juvenile Fatalities that were Alcohol-related</b> | <b>Percent Change Alcohol-related Juvenile Fatalities, 2005-2006</b> | <b>Percentage of Alcohol-related Fatalities that were under 21</b> |
|---------------------------------|----------------------------------|-----------------------------------|---|--|--|
| <b>District of Columbia</b>     | <b>4</b>                         | <b>0</b>                          | <b>0.0%</b>   | <b>-100.0%</b>   | <b>0.0%</b>  |
| Maryland                        |                                  |                                   |   |  |  |
| Montgomery County               | 9                                | 2                                 | <b>22.2%</b>  | 100.0%   | <b>11.8%</b>   |
| Prince George's County          | 13                               | 1                                 | <b>0.0%</b>   | -100.0%  | <b>3.3%</b>  |
| <b>MD Regional Total</b>        | <b>22</b>                        | <b>3</b>                          | <b>13.6%</b>  | <b>-33.3%</b>  | <b>6.4%</b>  |
| Virginia                        |                                  |                                   |   |  |  |
| Arlington County                | 0                                | 0                                 | 0.0%  | n/a  | <b>0.0%</b>  |
| Fairfax County                  | 15                               | 6                                 | 40.0%   | 0.0%   | <b>25.0%</b>   |
| Loudoun County                  | 6                                | 0                                 | 0.0%  | n/a  | <b>0.0%</b>  |
| Prince William County*          | 5                                | 2                                 | 40.0%   | -100.0%  | <b>9.1%</b>  |
| City of Alexandria              | 0                                | 0                                 | 0.0%  | n/a  | <b>0.0%</b>  |
| City of Fairfax                 | 1                                | 0                                 | 0.0%  | n/a  | <b>0.0%</b>  |
| City of Falls Church            | 0                                | 0                                 | 0.0%  | n/a  | <b>0.0%</b>  |
| City of Manassas                | 1                                | 0                                 | 0.0%  | n/a  | <b>0.0%</b>  |
| City of Manassas Park           | 0                                | 0                                 | 0.0%  | n/a  | <b>0.0%</b>  |
| <b>Northern Virginia Total</b>  | <b>27</b>                        | <b>6</b>                          | <b>22.2%</b>  | <b>-14.3%</b>  | <b>10.9%</b>   |
| <b>DC Metro Regional Total</b>  | <b>60</b>                        | <b>8</b>                          | <b>13.3%</b>  | <b>-38.5%</b>  | <b>6.8%</b>  |
| <b>National Parks in Region</b> | <b>0</b>                         | <b>0</b>                          | <b>0.0%</b>   | <b>--</b>  |  |
| <b>Regional Total Adjusted</b>  | <b>60</b>                        | <b>8</b>                          | <b>13.3%</b>  | <b>-38.5%</b>  | <b>6.8%</b>  |

^Regional totals do not include jurisdictions with missing data.

\*Montgomery County data for persons under the age of 21 years determined to be driver and "at fault" for accident

#Prince George's County data represents persons under the age of 24 years

Source: Jurisdictional contacts, see specific contact in Methodology

**Table 19B: SNAPSHOT! Alcohol Related Crashes, Injuries, and Arrests for Persons Under 21 Years of Age By Region, 2006**

|                                 | Crashes    | Percentage of Alcohol-related Crashes | Injuries   | Percentage of Alcohol-related Injuries | Arrests    | Percentage of Alcohol-related Arrests |
|---------------------------------|------------|---------------------------------------|------------|--|------------|---------------------------------------|
| <b>District of Columbia</b>     | <b>0</b>   | --                                    | <b>0</b>   | --                                     | <b>4</b>   | <b>0.2%</b>                           |
| Maryland                        |            |                                       |            |  |            |                                       |
| Montgomery County               | 114        |                                       | 27         |  | 468        |                                       |
| Prince George's County          | 289        |                                       | 93         |  | 15         |                                       |
| <b>MD Regional Total</b>        | <b>403</b> | <b>18.3%</b>                          | <b>120</b> | <b>12.0%</b>                           | <b>483</b> | <b>8.8%</b>                           |
| Virginia                        |            |                                       |            |  |            |                                       |
| Arlington County                | 168        |                                       | 24         |  | 40         |                                       |
| Fairfax County                  | 122        |                                       | 87         |  | 209        |                                       |
| Loudoun County                  | 38         |                                       | 28         |  | 70         |                                       |
| Prince William County           | 92         |                                       | 47         |  | 37         |                                       |
| City of Alexandria              | 0          |                                       | 0          |  | 1          |                                       |
| City of Fairfax                 | 3          |                                       | 0          |  | 1          |                                       |
| City of Falls Church            | 0          |                                       | 0          |  | 2          |                                       |
| City of Manassas                | 0          |                                       | 0          |  | 0          |                                       |
| City of Manassas Park           | 0          |                                       | 0          |  | 1          |                                       |
| <b>Northern Virginia Total</b>  | <b>423</b> | <b>21.6%</b>                          | <b>186</b> | <b>18.8%</b>                           | <b>361</b> | <b>5.2%</b>                           |
| <b>DC Metro Regional Total</b>  | <b>826</b> | <b>18.8%</b>                          | <b>306</b> | <b>15.4%</b>                           | <b>848</b> | <b>6.0%</b>                           |
| <b>National Parks in Region</b> | <b>0</b>   | <b>0.0%</b>                           | <b>7</b>   | <b>21.9%</b>                           | <b>5</b>   | <b>0.5%</b>                           |
| <b>Regional Total Adjusted</b>  | <b>826</b> | <b>18.4%</b>                          | <b>313</b> | <b>15.5%</b>                           | <b>853</b> | <b>5.6%</b>                           |

^Regional totals do not include jurisdictions with missing data.

\*Montgomery County data for persons under the age of 21 years determined to be driver and "at fault" for accident

#Prince George's County data represents persons under the age of 24 years

Source: Jurisdictional contacts, see specific contact in Methodology

## SUMMARY

After two years of decreases in alcohol-related motor vehicle fatalities, the Washington Metro region saw an unfortunate 31.5% increase this year. Arrests for impaired driving decreased slightly in 2006. After three years of decreases the percentage of all crashes that were alcohol-related increased slightly to 6.2% in 2006 compared to 5.2% in 2005.

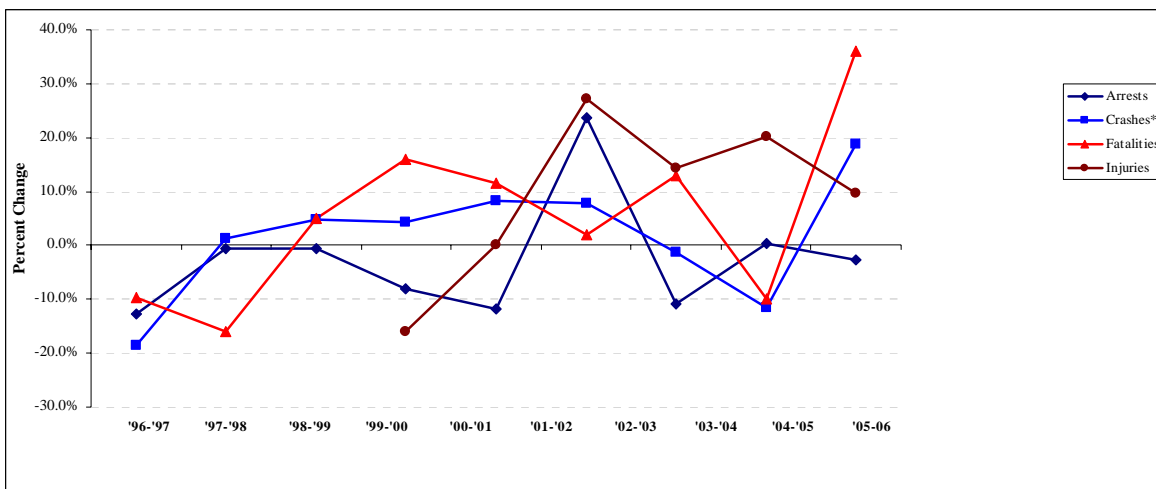
**Table 20: DC Metro Region Percentage Change in Alcohol-related Incidents by Year, 1996-2005**

|                   | '96-'97 | '97-'98 | '98-'99 | '99-'00 | '00-'01 | '01-'02 | '02-'03 | '03-'04 | '04-'05 |
|-------------------|---------|---------|---------|---------|---------|---------|---------|---------|---------|
| <b>Arrests</b>    | -12.8%  | -0.5%   | -0.5%   | -8.1%   | -11.8%  | 23.7%   | -10.8%  | 0.4%    | -2.6%   |
| <b>Crashes</b>    | -18.5%  | 1.3%    | 4.7%    | 4.4%    | 8.3%    | 7.7%    | -1.4%   | -11.6%  | 18.7%   |
| <b>Fatalities</b> | -9.7%   | -16.1%  | 5.1%    | 15.9%   | 11.6%   | 1.9%    | 13.0%   | -9.8%   | 36.0%   |
| <b>Injuries</b>   | -       | -       | -       | -16.0%  | -6.8%*  | 27.1%   | 14.3%   | 20.1%   | 9.8%    |

\*District of Columbia data excluded due to missing values .

Source: Jurisdictional contacts, see specific contact in Methodology

**Figure 20: Washington Metro region Percentage Change in Alcohol-related Incidents by Year, 1996-2006**



The District of Columbia saw a moderate decrease (-16.7%) in alcohol-related fatalities in 2006. The number of alcohol-related injuries was 416 for 2006. However, the extent of the increase compared to 2005 cannot be made as 2005 data were not available. Arrests in the District decreased for the first time in three years.

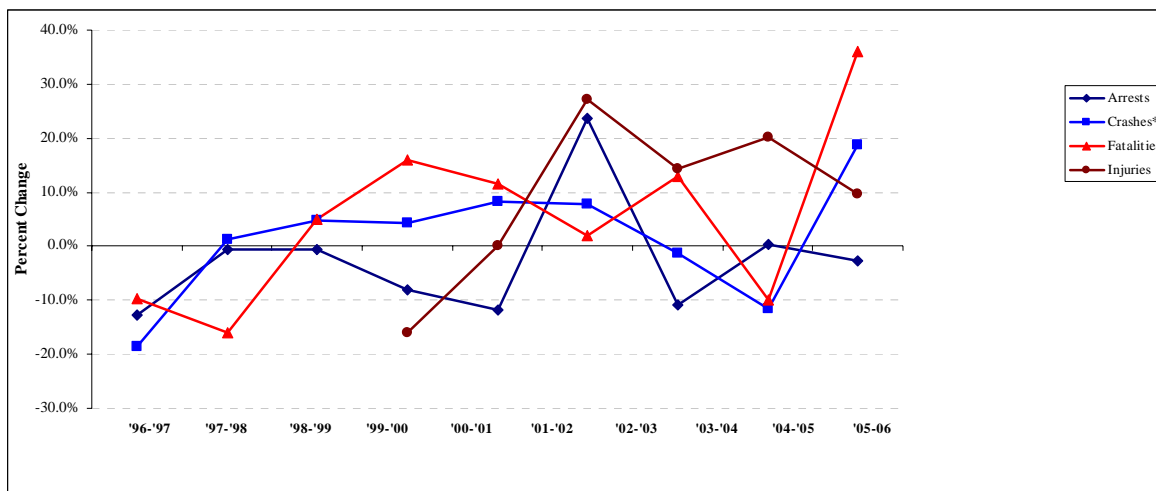
**Table 21: District of Columbia Percentage Change in Alcohol-related Incidents by Year, 1996-2006**

|                   | '96-'97 | '97-'98 | '98-'99 | '99-'00 | '00-'01 | '01-'02 | '02-'03 | '03-'04 | '04-'05 | '05-'06 |
|-------------------|---------|---------|---------|---------|---------|---------|---------|---------|---------|---------|
| <b>Arrests</b>    | -4.9%   | -13.4%  | -22.2%  | 1.2%    | 6.3%    | -24.1%  | 14.7%   | 4.0%    | -11.5%  | -47.1%  |
| <b>Crashes</b>    | -       | -       | -       | -       | -       | -       | 143.2%* | -18.6%  | -7.0%   | -       |
| <b>Fatalities</b> | 25.0%   | 60.0%   | -12.5%  | -35.7%  | 55.6%   | -35.7%  | 277.8%  | -67.6%  | -16.7%  | 87.5%   |
| <b>Injuries</b>   | -       | -       | -       | -       | -       | 131.5%  | 170.4%  | 14.2%   | -14.8%  | -53.9%  |

\*Percentage change 2001 to 2003.

Source: Jurisdictional contacts, see specific contact in Methodology

**Figure 21: District of Columbia Percentage Change in Alcohol-related Incidents by Year, 1996-2006**





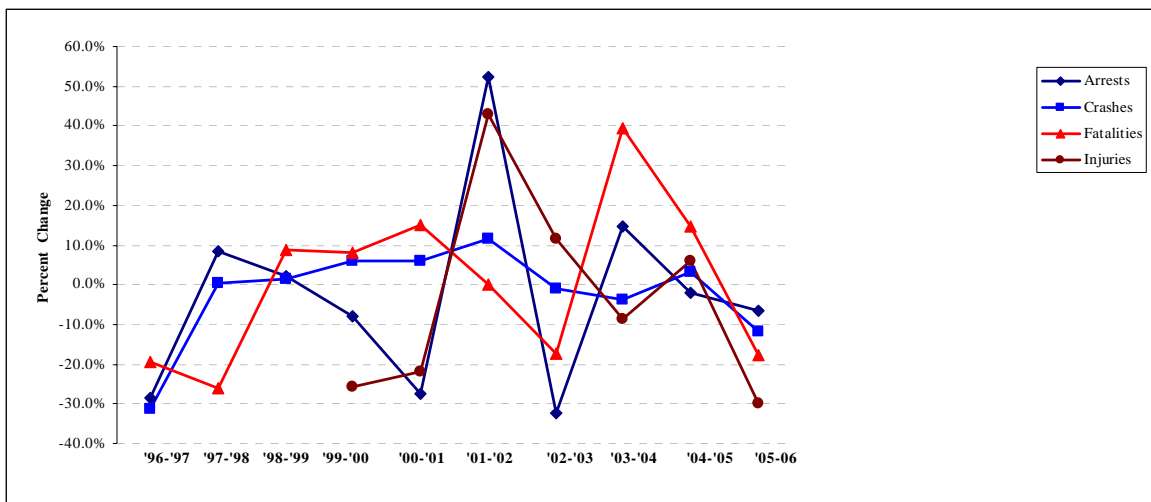
This year, Montgomery County, MD, which has remained fairly stable in the number of alcohol-related arrests since 1997, saw a slight increase of 4.4% compared to 2005. Prince George's County, MD had a decrease of 13.5% in arrests for impaired drivers compared to 2005, and experienced a drop of 29.2% compared to 1995. Montgomery County, MD experienced an increase of 50% in fatalities due to all types of crashes in 2006 and an increase of 88.9% in alcohol-related fatalities. Prince George's County, MD reported decreases in total fatalities (-17.2%) and alcohol related fatalities (-6.3%) for 2006.

**Table 22: Montgomery and Prince George's Counties, Maryland, Percentage Change in Alcohol-related Incidents by Year, 1996-2006**

|                   | '96-'97 | '97-'98 | '98-'99 | '99-'00 | '00-'01 | '01-'02 | '02-'03 | '03-'04 | '04-'05 |
|-------------------|---------|---------|---------|---------|---------|---------|---------|---------|---------|
| <b>Arrests</b>    | 28.4%   | 8.3%    | 2.2%    | -7.9%   | -27.5%  | 52.2%   | -32.5%  | 14.8%   | -1.9%   |
| <b>Crashes</b>    | 31.4%   | 0.4%    | 1.3%    | 6.0%    | 6.0%    | 11.7%   | -1.1%   | -3.8%   | 3.4%    |
| <b>Fatalities</b> | 19.3%   | -26.1%  | 8.8%    | 8.1%    | 15.0%   | 0.0%    | -17.4%  | 39.5%   | 14.6%   |
| <b>Injuries</b>   | -       | -       | -       | -25.8%  | -21.8%  | 42.8%   | 11.5%   | -8.5%   | 6.1%    |

Source: Jurisdictional contacts, see specific contact in Methodology

**Figure 22: Montgomery and Prince George's Counties, Maryland, Percentage Change in Alcohol-related Incidents by Year, 1996-2006**



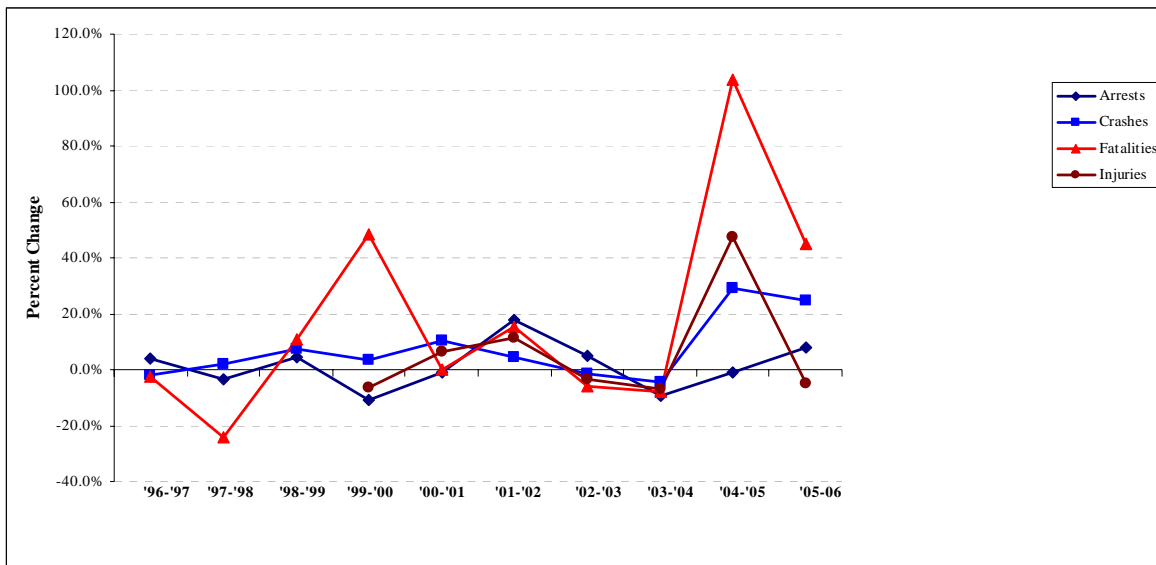
Northern Virginia reported a slight decrease in the number of arrests between 2005 and 2006. The number of alcohol-related crashes, injuries, and fatalities all increased in 2006.

**Table 23: Northern Virginia Percentage Change in Alcohol-related Incidents by Year, 1996-2006**

|                   | '96-'97 | '97-'98 | '98-'99 | '99-'00 | '00-'01 | '01-'02 | '02-'03 | '03-'04 | '04-'05 |
|-------------------|---------|---------|---------|---------|---------|---------|---------|---------|---------|
| <b>Arrests</b>    | 4.1%    | -3.5%   | 4.4%    | -10.7%  | -1.2%   | 17.6%   | 5.0%    | -9.5%   | -0.8%   |
| <b>Crashes</b>    | -2.2%   | 2.1%    | 7.5%    | 3.3%    | 10.3%   | 4.4%    | -1.6%   | -4.4%   | 29.0%   |
| <b>Fatalities</b> | -2.6%   | 24.3%   | 10.7%   | 48.4%   | 0.0%    | 15.2%   | -5.7%   | -8.0%   | 103.7%  |
| <b>Injuries</b>   | -       | -       | -       | -6.4%   | 6.4%    | 11.6%   | -3.4%   | -6.8%   | 47.5%   |

Source: Jurisdictional contacts, see specific contact in Methodology

**Figure 23: Northern Virginia Percentage Change in Alcohol-related Incidents by Year, 1996-2006**



## FINAL COMMENTS

It is encouraging to note that motor vehicle crashes are down in the Metro Washington Region; however, the number of alcohol-related crashes, fatalities, and injuries has noticeably increased. Also, the number of alcohol related driving arrests are slightly down, which could have a possible correlation to the increases in alcohol-related crashes, fatalities, and injuries. Because of the small number of fatalities, large percentage changes may occur as the result of a single crash.

Efforts continue both nationwide and locally to curb alcohol-related motor vehicle crashes, injuries, and fatalities. Although the relationship between alcohol-related driving arrests and alcohol-related fatalities, injuries, and crashes is not clearly understood, the Washington Metro region did report a small decrease in the number of alcohol-related driving arrests. It is important to note that the number of arrests in the region this year was down significantly from the high-water mark of 18,216 in 1996 (but did not include all jurisdictions).

The District of Columbia reported a dramatic increase of 75.5% in alcohol-related fatalities, with a decrease of 11.5% in arrests, while the Maryland Region reported an increase of 3.4 % in alcohol-related crashes and a 1.9% decrease in arrests. The Virginia Region reported a very slight decrease of 0.8% in arrests with a 29% increase in alcohol-related crashes.

In 2006, 6.8% of alcohol related motor vehicle fatalities were under age 21. Alcohol-related fatalities represented 13.3% of all traffic fatalities for persons under 21 – down significantly from 2005.

## ACKNOWLEDGEMENTS

The Metropolitan Washington Council of Governments acknowledges that a report of this magnitude requires the assistance of many. We wish to thank the following individuals and organizations for their assistance with, and contributions to, this *How Safe Are Our Roads?* Report:

Kurt Erickson and Robin Black  
Washington Regional Alcohol Program

Nancy Rea and Lauren Udvari  
Metropolitan Washington Council on Governments

---

Nationally, Alcohol-related traffic fatalities have decreased by 44 percent since 1980. Still today, someone dies about every 30 minutes in an alcohol-related crash.

---

### **From the Washington Metro region jurisdictions**

#### *District of Columbia*

Yusuf Aden & Sgt. Robert Taylor, District Department of Transportation  
Mr. Troy Pettiford, United States Park Police

#### *Maryland*

Mr. John Sfondouris, Prince George's County Police Department  
Mr. Skip Baylor & Ms. Felicia Hobbs, Montgomery County Department of Police  
Ms. Dana Gigliotti, Project Director, Prince George's Highway Safety Office  
Ms. Ida Williams, Division Director, Central Records Division Maryland State Police

#### *Northern Virginia*

Mr. Dean Montanye, Arlington County Police Dept.  
Mr. Jerry Stemler, Fairfax County Police Dept.  
Lt. Rudy Landon, Loudoun County Sheriff's Office  
Sgt. Bobby Bardon & Sgt. Dennis Mangan, Prince William County Police Dept.  
Capt. Timothy Dickinson, City of Alexandria Police Dept.  
Lt. M.A. Rizzo, City of Fairfax Police Dept.  
Pfc. Dee Wilson, City of Falls Church Police Dept.  
Sgt. Brian Larkin & Deb Nash, City of Manassas Police Dept.  
Lt. Karen Barton & Eugenia Ludvisgen City of Manassas Park Police Dept.  
Ms. Shelia Taylor, Virginia Dept. of Motor Vehicles, Virginia State Police

## Definition of Terms

### *Terms Related to the Data*

**Alcohol-Related Crash** – A motor vehicle crash is considered to alcohol-related if at least one driver or non-occupant (such as a pedestrian or pedalcyclist) involved in the crash is determined to have a Blood Alcohol Concentration (BAC) of 0.01 gram per deciliter (G/dl) or higher.

**Alcohol-Related Fatality** – Any fatality that occurs in an alcohol-related crash.

**Alcohol-Related Injury** – Any injury that occurs in an alcohol-related crash.

**Percent of Fatalities that are Alcohol-Related** - These percentages represent the ratio of alcohol-related fatalities to the number of total fatalities as expressed below:

$$\frac{\text{Alcohol-Related Fatalities (year)}}{\text{Total Fatalities (year)}} \times 100$$

**Percent of Crashes that are Alcohol-Related** - These percentages represent the ratio of alcohol-related crashes to the number of total crashes as expressed below:

$$\frac{\text{Alcohol-Related Crashes (year)}}{\text{Total Crashes (year)}} \times 100$$

**Percent of Injuries that are Alcohol-Related** - These percentages represent the ratio of alcohol-related injuries to the number of total injuries as expressed below:

$$\frac{\text{Alcohol-Related Injuries (year)}}{\text{Total Injuries (year)}} \times 100$$

**Percent Change** – This report contains much discussion of percentage change. This analysis is included to show fluctuations from year to year and to provide an added perspective. Percent change is calculated by taking the number (of fatalities, crashes, injuries, arrests, etc) for the current year, minus the number for the previous year, then dividing the difference by the number for the previous year and multiplying the dividend by 100.

## *General Terms*

**Blood Alcohol Concentration (BAC)** - Blood Alcohol Concentration is the amount of alcohol in the bloodstream. It is measured in percentages. For instance, having a BAC of 0.10 percent means that a person has 1 part alcohol per 1,000 parts blood in the body. BAC can be measured by breath, blood, or urine tests. BAC measurement is especially important for determining the role of alcohol in motor vehicle related fatalities, crashes and injuries.

**Drunk Driving** - A general reference to those criminal cases that are called DUI, DWI, OUI, OWI, DUUI, DWAI, or other acronyms. They generally describe two types of cases: first, where the driver is sufficiently impaired by alcohol, drugs, or a combination of the two, that the driver cannot drive safely. Second, "drunk driving" relates to those cases where someone is above that state's legal limit, usually .08, no matter how safely the person is driving.

**Juvenile** – A person under the age of 21 years, or as defined in the local jurisdiction as under the age of majority. It is important to note that for purposes of this report, the age a person is defined is not consistent between local jurisdictions.

**National Highway Traffic Safety Administration (NHTSA)** - The agency within the United States Department of Transportation that administers traffic safety programs. NHTSA's duties include funding studies on field sobriety tests and training law enforcement officers in the administration of the standardized field sobriety test battery.

**U.S. Census Bureau** – A bureau of the Commerce Department responsible for taking the census and providing demographic information and analyses about the population of the United States

**Vehicle** – A motor vehicle, car, truck, motorcycle. In some states, a DUI, DWI or drunk driving conviction can result from driving a bicycle, riding a horse, driving a snowmobile, or even a motorized wheelchair.

**Washington D.C. Metropolitan Region** – For purposes of this report, the Washington D.C. Metropolitan Region consists of 12 jurisdictions within the District of Columbia, Maryland and Northern Virginia. For a listing of the jurisdictions, refer to page 5.

***How Safe Are Our Roads?***

Prepared by  
Keith Rivers  
Tim Sharma

Metropolitan Washington Council of Governments  
777 N. Capitol Street, NE Suite #300  
Washington, DC 20002  
(202)962-3200