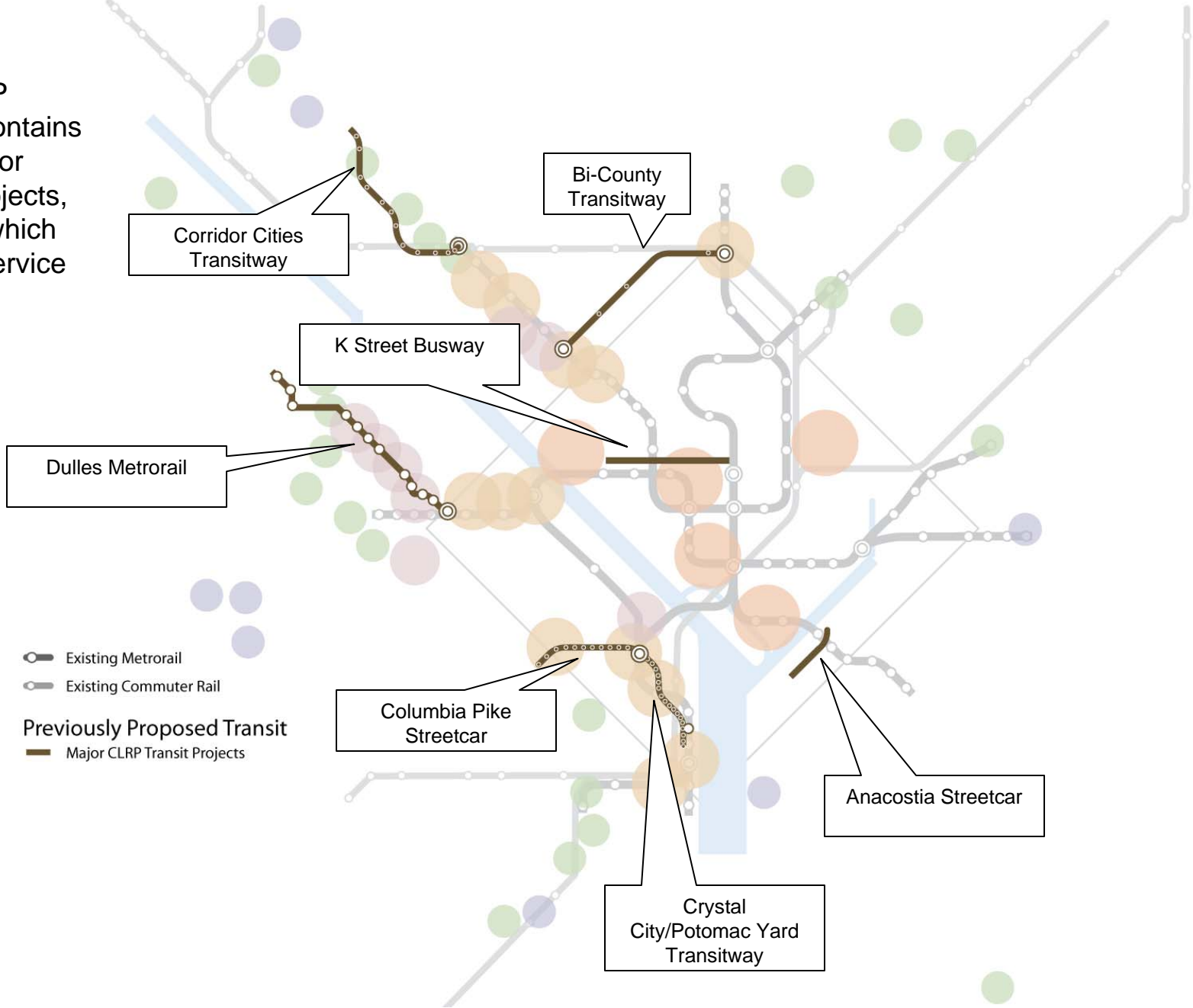


Current System



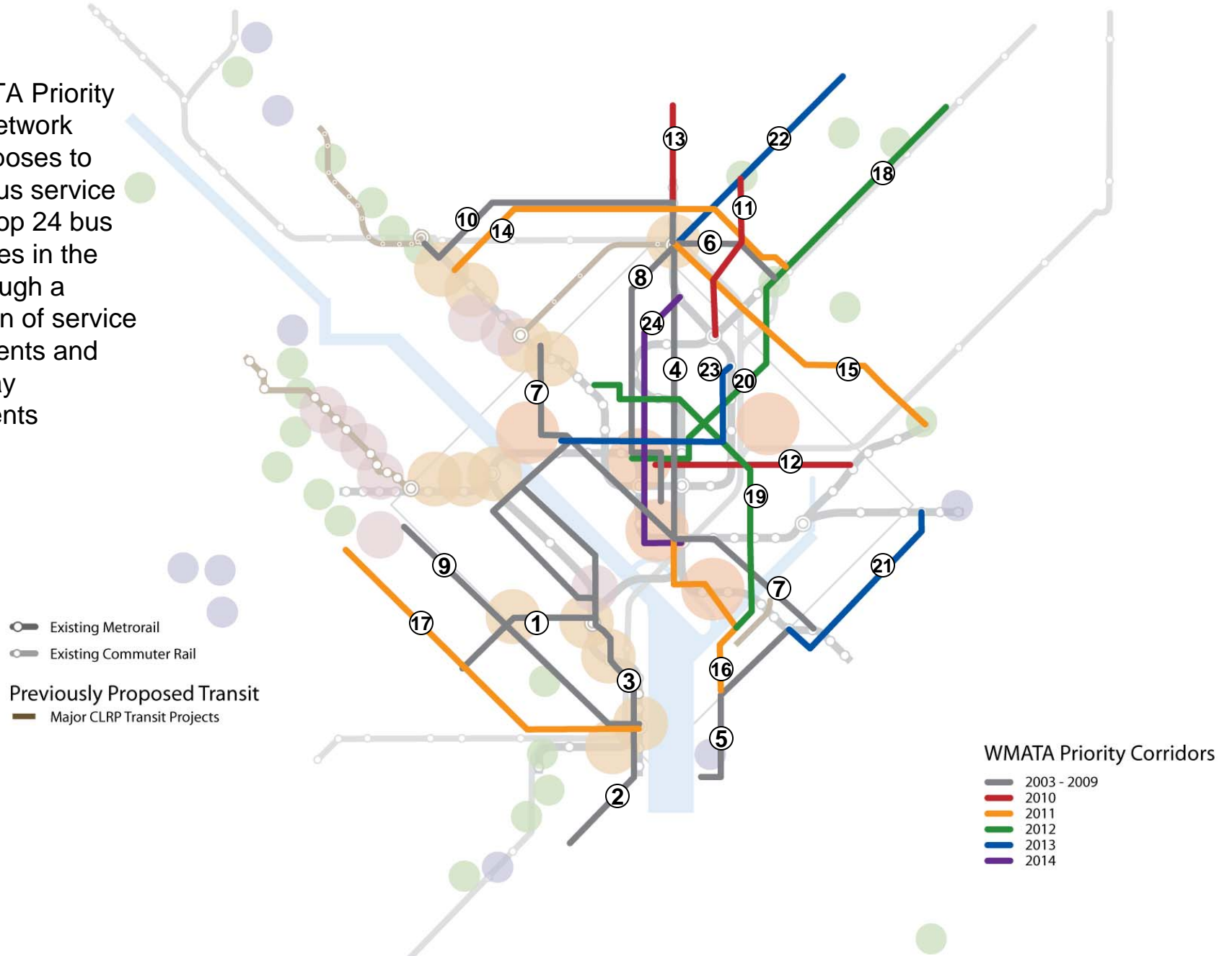
CLRP Major Transit Projects

The CLRP already contains many major transit projects, many of which provide service to activity centers.



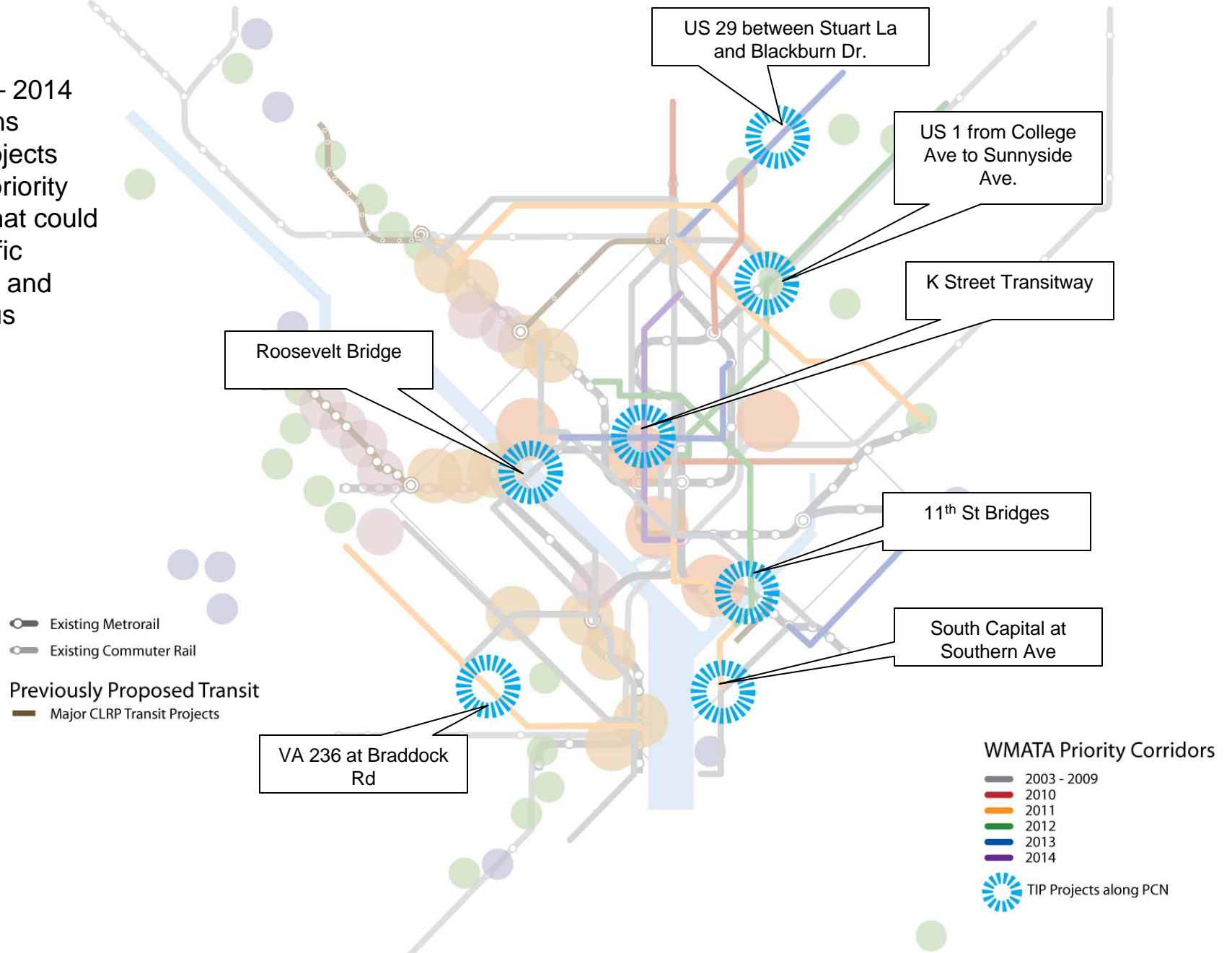
WMATA Priority Corridor Network

The WMATA Priority Corridor Network (PCN) proposes to enhance bus service along the top 24 bus transit routes in the region through a combination of service enhancements and running-way improvements



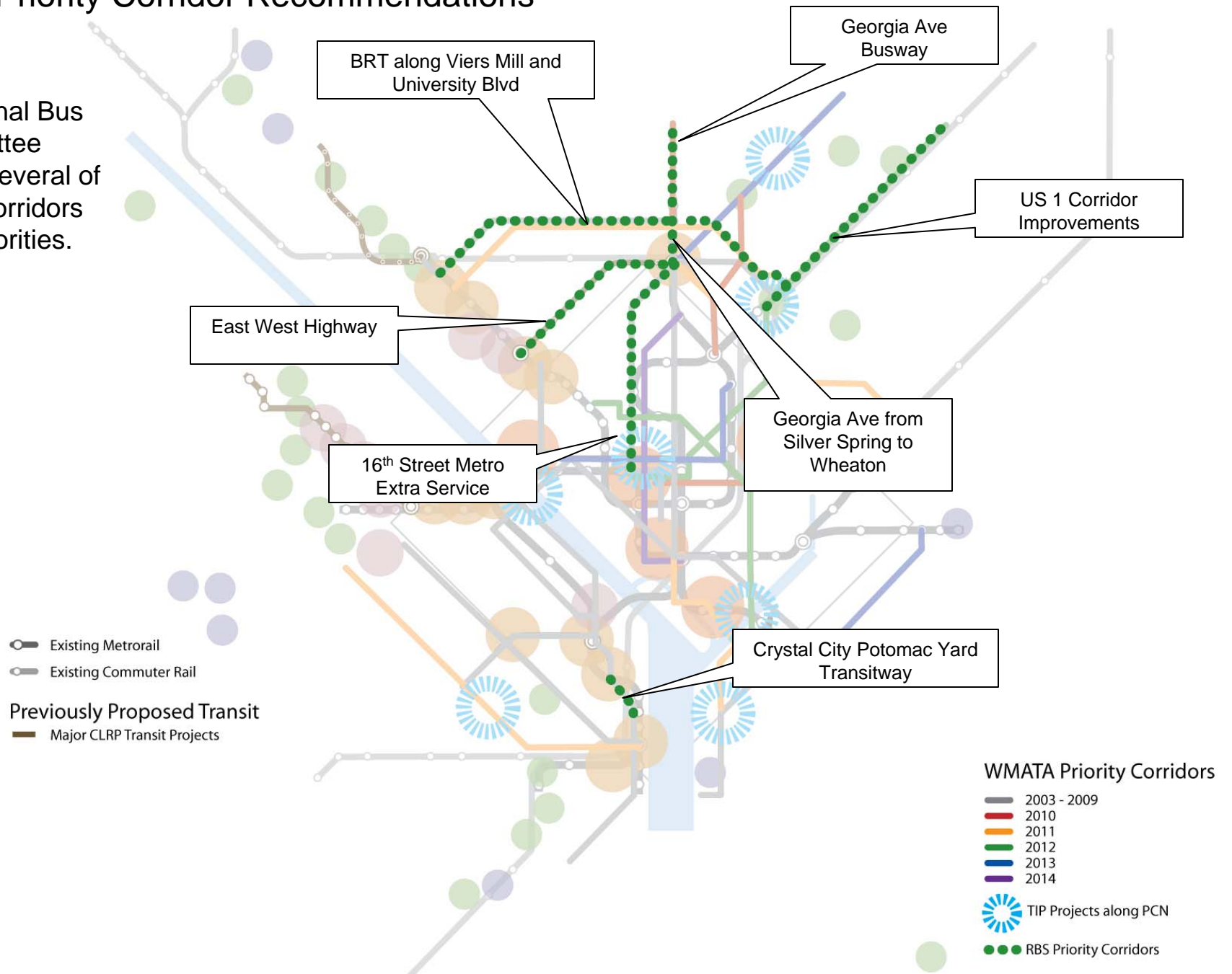
TIP Projects Along PCN

The 2009 – 2014 TIP contains several projects along the priority corridors that could relieve traffic congestion and improve bus service.



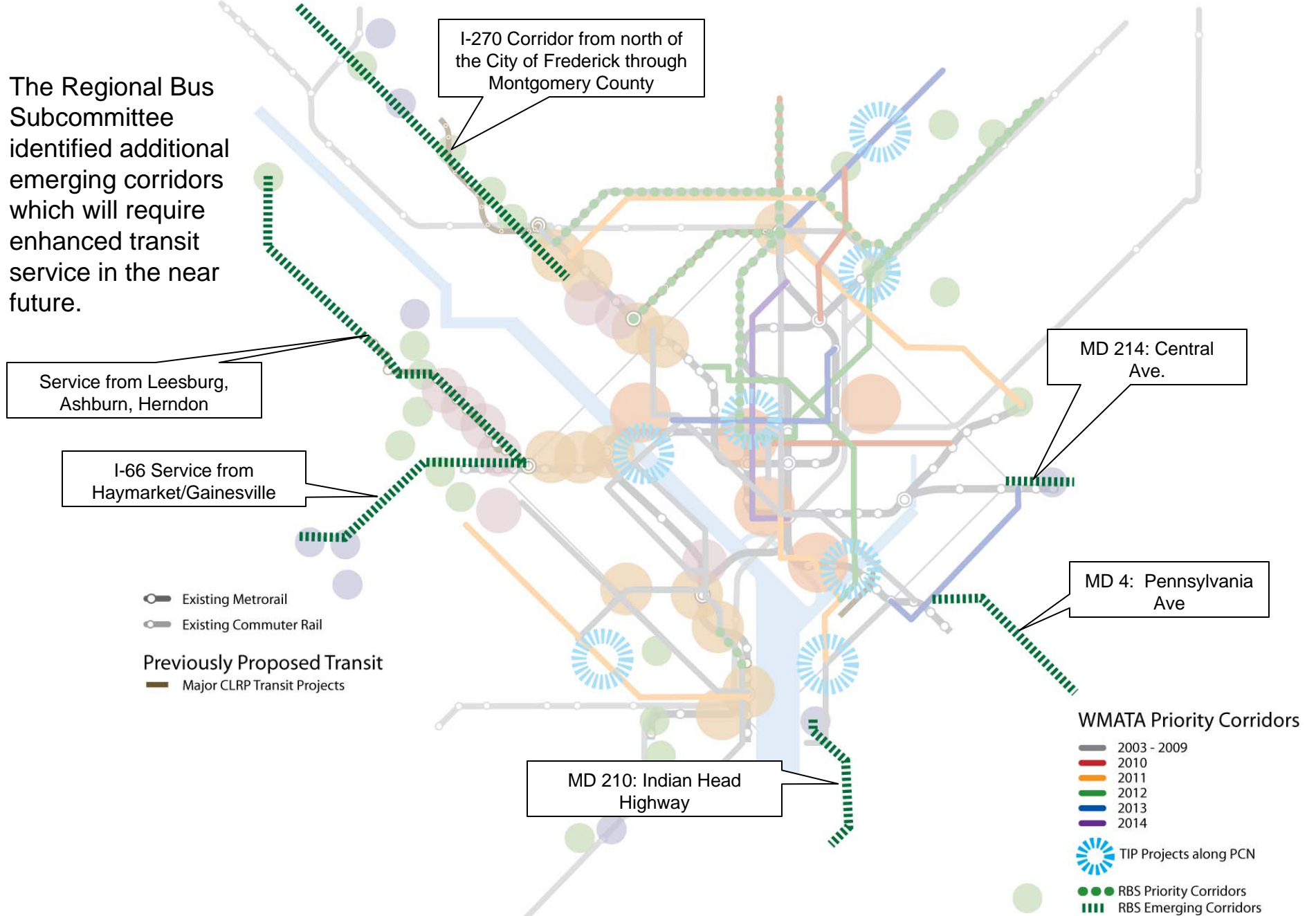
RBS Priority Corridor Recommendations

The Regional Bus Subcommittee identified several of the PCN corridors as high priorities.



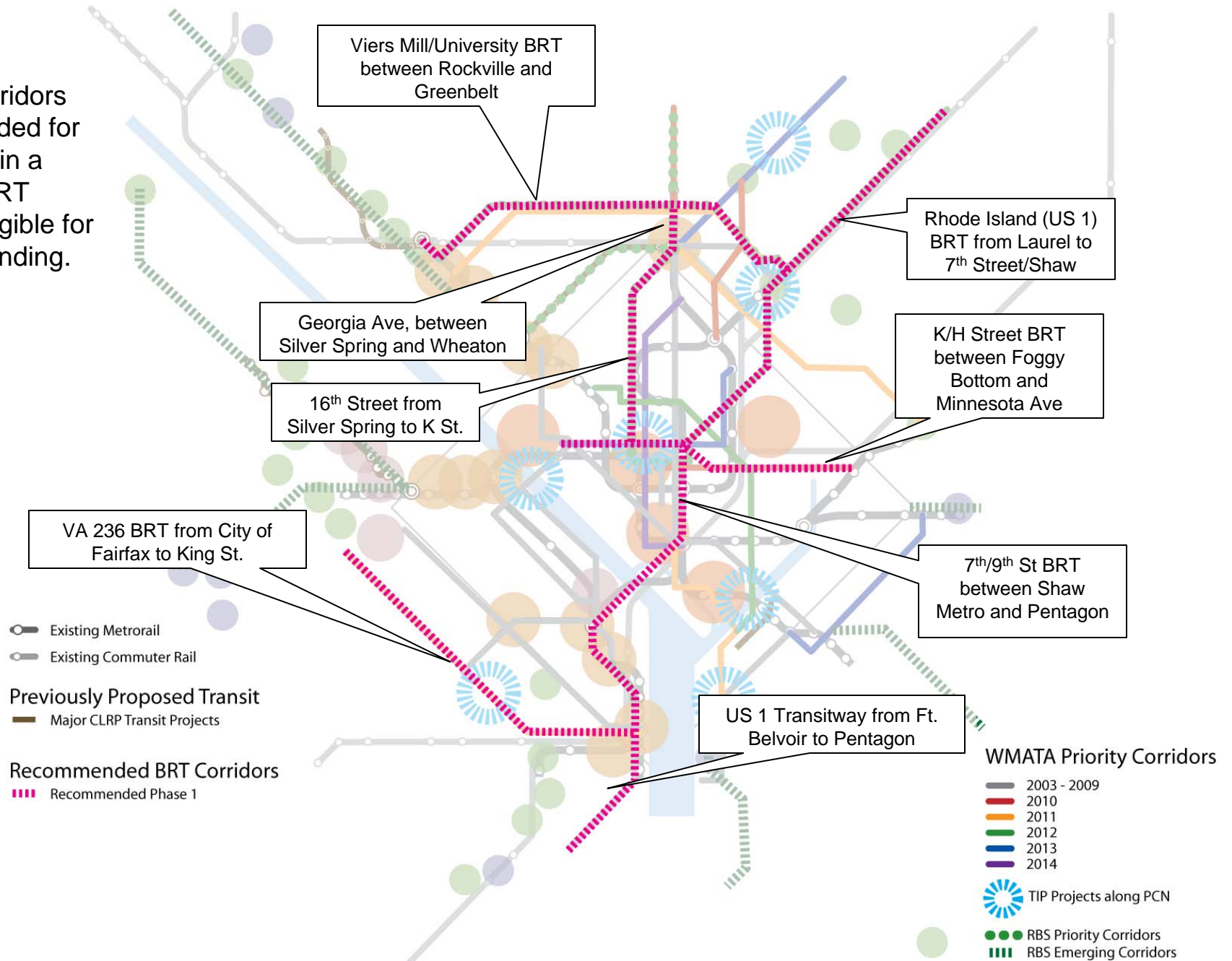
RBS Emerging Corridor Recommendations

The Regional Bus Subcommittee identified additional emerging corridors which will require enhanced transit service in the near future.



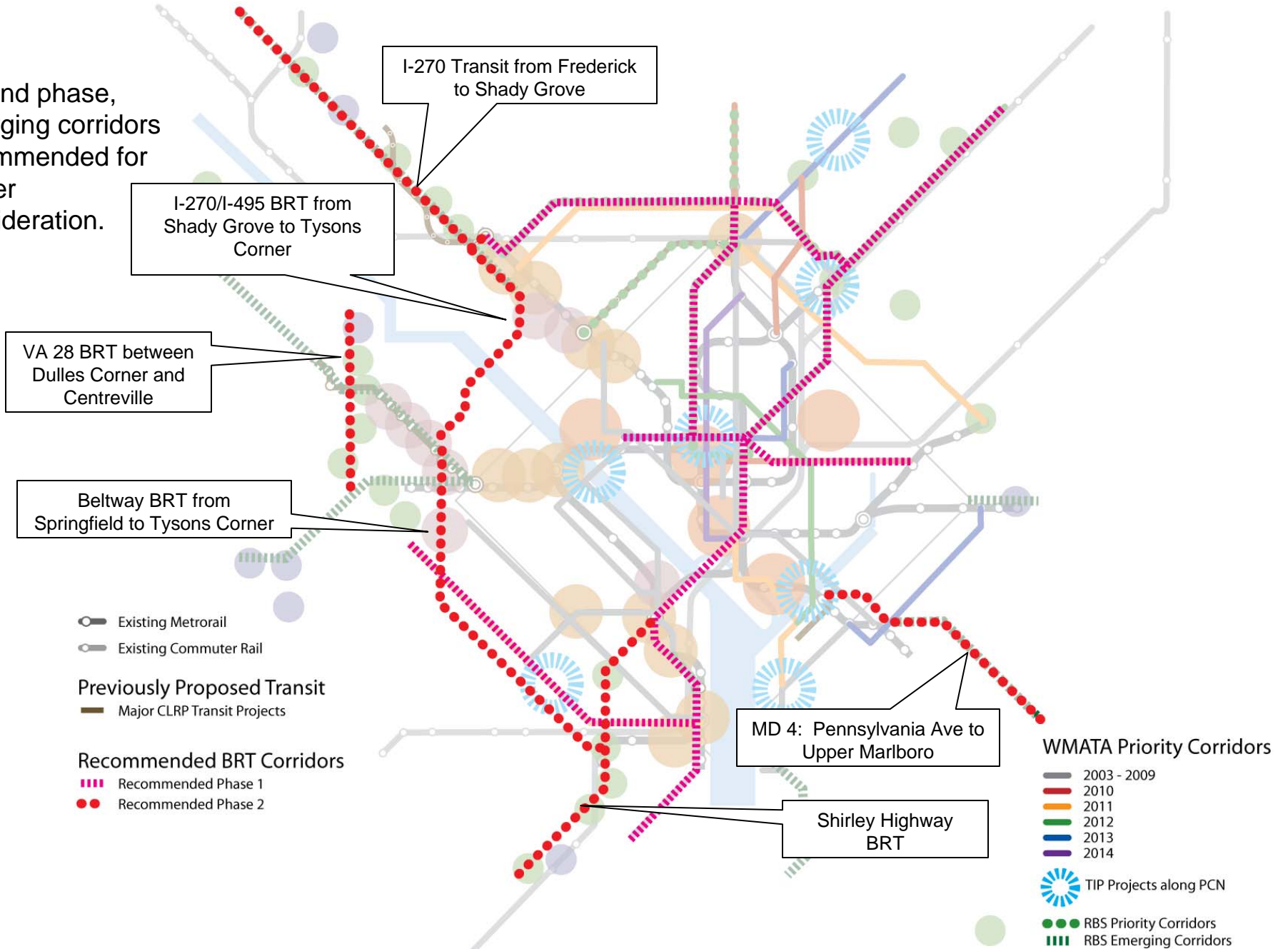
Staff Recommendation: Phase 1 BRT Corridors by 2015

Arterial corridors recommended for evaluation in a Phase 1 BRT network eligible for stimulus funding.



Staff Recommendation: Phase 2 BRT Corridors by 2020

Second phase, emerging corridors recommended for further consideration.



I-270 Transit from Frederick to Shady Grove

I-270/I-495 BRT from Shady Grove to Tysons Corner

VA 28 BRT between Dulles Corner and Centreville

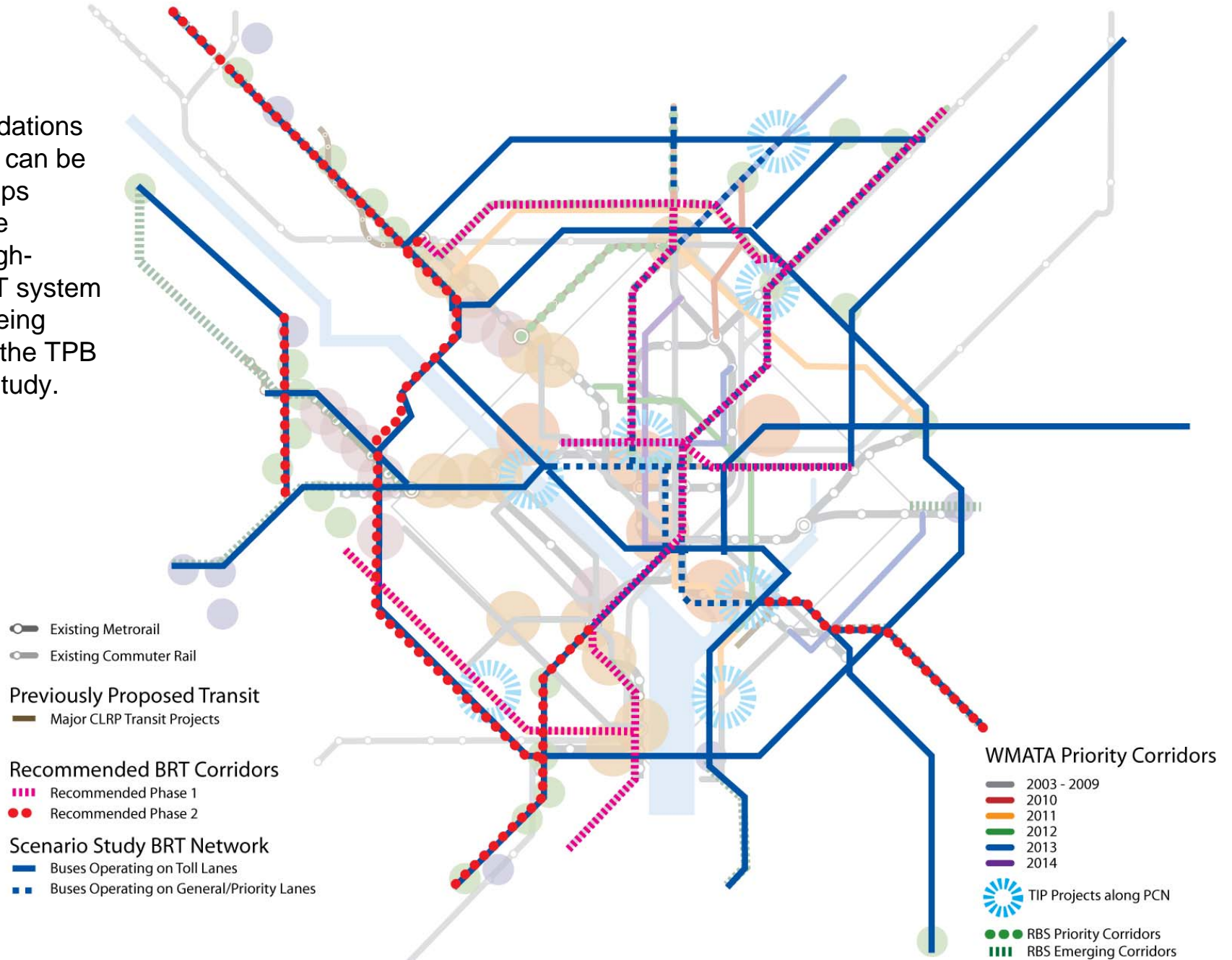
Beltway BRT from Springfield to Tysons Corner

MD 4: Pennsylvania Ave to Upper Marlboro

Shirley Highway BRT

Full Regional BRT Network for 2030

BRT recommendations made here can be the first steps towards the regional high-quality BRT system currently being studied by the TPB Scenario Study.





Recommended Priority Corridor Network

Corridor Description	Line/Route Description	Status	Juris.	Study Year (FY)	Impl. Year (FY)	Average Weekday Ridership	Annual Platform Hours
1 Columbia Pike (Pike Ride)	16ABDEFJ 16GHKW 16L 16Y	I	VA	2002	2003	13,300	99,500
2 Richmond Highway Express (REX)	REX	I	VA	2003	2004	3,700	33,800
3 Crystal City-Potomac Yard	9A 9E 9S	I	VA	2005	2006	3,200	33,400
4 Georgia Ave./7th St. (DC)	70 71 79	I	DC	2006	2007	18,400	99,500
5 Southern Ave. Metro-National Harbor	NH-1	I	MD	2007	2008	900	New
6 University Blvd./East-West Highway	J1 J2 J3 J4	P	MD	2007	2009	7,800	68,000
7 Wisconsin Ave./Pennsylvania Ave.	30 32 34 35 36	I	DC	2008	2009	20,700	162,000
8 Sixteenth St.	S1 S2 S4	P/I	DC	2008	2009	15,000	111,900
9 Leesburg Pike	28AB 28FG 28T	P/I	VA	2009	2009	7,400	52,500
10 Veirs Mill Rd.	Q2	P	MD	2009	2010	10,500	75,400
11 New Hampshire Ave.	K6	P	MD	2010	2011	6,300	40,500
12 H St./Benning Rd.	X2	P	DC	2010	2011	13,700	65,300
13 Georgia Ave. (MD)	Y5 Y7 Y8 Y9	P	MD	2010	2011	7,600	57,600
14 Greenbelt-Twinbrook	C2 C4	P	MD	2011	2012	14,200	99,700
15 East-West Highway (Prince George's)	F4 F6	P	MD	2011	2012	8,300	52,000
16 Anacostia-Congress Heights	A2 6 7 8 42 46 48	P	DC	2011	2012	11,900	77,500
17 Little River Tpke./Duke St.	29KN 29CEGHX	P	VA	2011	2012	3,200	40,800
18 Rhode Island Ave. Metro to Laurel	81 82 83 86 87 88 89 89M	P	MD	2012	2013	6,900	57,500
19 Mass Ave./ U St./ Florida Ave./ 8th St./ MLK Ave.	90 92 93	P	DC	2012	2013	14,700	106,400
20 Rhode Island Ave.	G8	P	DC	2012	2013	3,800	34,200
21 Eastover-Addison Rd. Metro	P12	P	MD	2013	2014	5,600	44,600
22 Colesville Rd./Columbia Pike - MD US 29	Z2 Z6 Z8 Z9,29 Z11,13	P	MD	2013	2014	10,100	97,100
23 North Capitol St.	80	P	DC	2013	2014	8,600	60,800
24 Fourteenth St.	52 53 54	P	DC	2014	2015	15,000	98,200
Total Priority Corridor Network						230,800	1,668,200

Phase 1 Recommendations:

BRT on arterials

#	Corridor	From	To	Rationale
1	US 1 through Arlington, Alexandria, Fairfax County	Pentagon	Ft. Belvior	BRAC, CLRP, RMAS, PCN
2	14 th St Brdige, 7 th /9 th Streets through downtown DC	Pentagon	Shaw Metro	PCN
3	Rhode Island Ave / Baltimore Ave (US 1) Corridor	Shaw Metro	Laurel	PCN, RBS Priority Corridors, TIP
4	K Street Busway	Foggy Bottom	Mt. Vernon Sq	CLRP, RPB Priorities, PCN, TIP
5	H Street Busway	Mt. Vernon Sq	Minnesota Ave	PCN
6	16 th Street BRT	K St	Silver Spring Metro	PCN, RBS Priorities
7	Georgia Ave	Silver Spring Metro	Wheaton Metro	PCN, RBS Priorities
8	Viers Mill / University Blvd	Shady Grove or Rockville	Greenbelt	PCN, RBS Priorities
9	VA 236	King Street Metro	City of Fairfax	PCN, TIP

Phase 2 Recommendations:

BRT on Freeways

#	Corridor	From	To	Rationale
A	VA 28	Dulles Corner	Centreville	TransAction 2030
B	I-270 Corridor	North of City of Frederick	Shady Grove	RBS Priorities
C	I-270/I-495	Shady Grove	Tysons Corner	TransAction 2030
D	Beltway HOT Lanes	Springfield	Tysons Corner	CLRP
E	Shirley Highway HOT Lanes	Potomac Mills	Pentagon	CLRP