



Planning for the Purple Line in Montgomery County

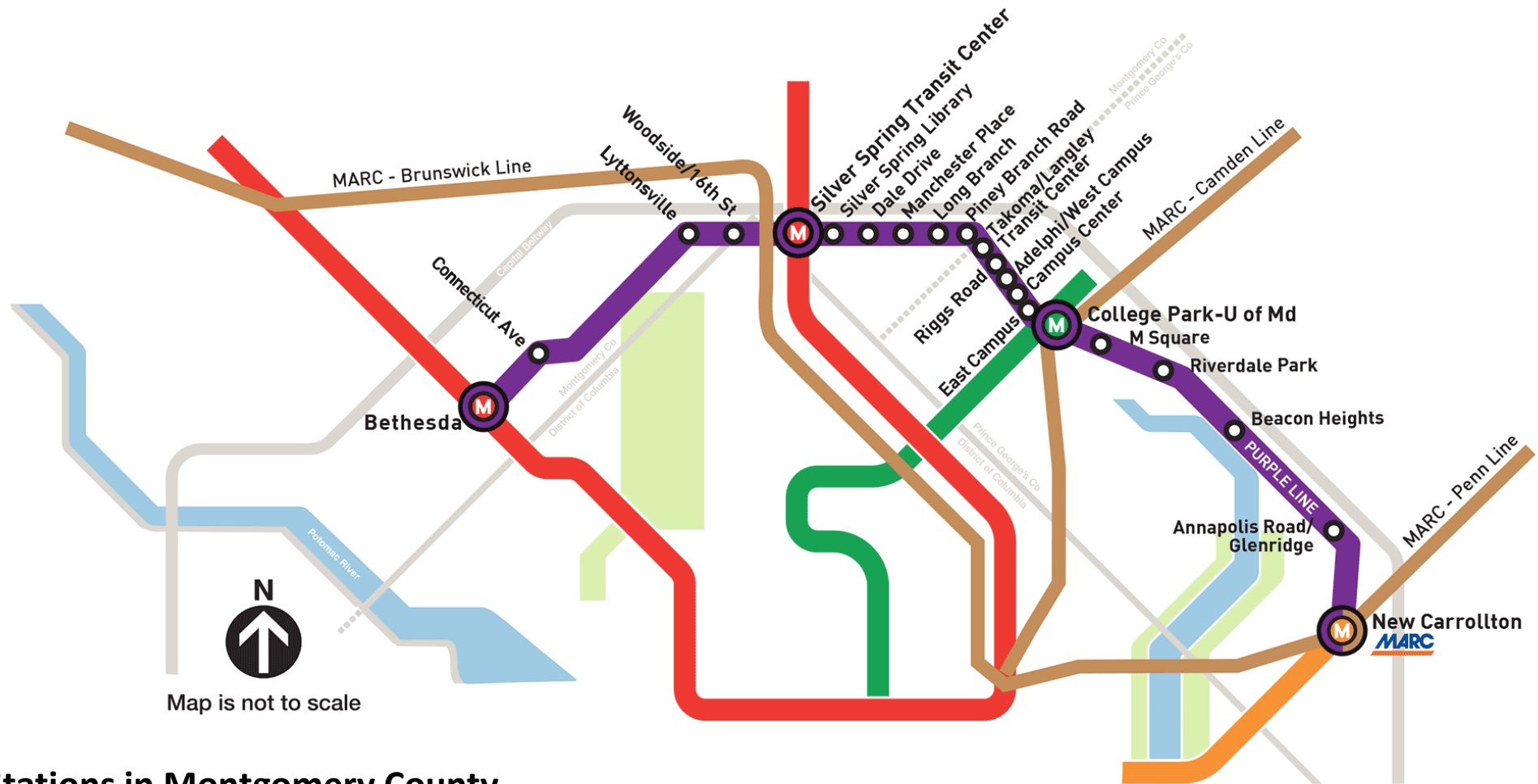
Robert Kronenberg, Deputy Planning Director
Katie Mencarini, Senior Planner
Montgomery County Park and Planning Commission

TPB Technical Committee
April 5, 2019
Item 7



Presentation Overview

- Project Description
- Construction Update
- Development Activity
 - Bethesda
 - Silver Spring
- Challenges/Successes
- Photo Tour of Projects



N
↑
Map is not to scale

Purple Line Stations in Montgomery County

Area	Bethesda	Chevy Chase Lake	Lyttonsville	Silver Spring	East Silver Spring	Long Branch
Stations	Bethesda	Connecticut Avenue	Lyttonsville	Silver Spring Metro	Dale Drive	Long Branch
			16 th Street Woodside	Silver Spring Library	Manchester Place	Piney Branch Road

Purple Line is 10 Percent Complete, Project Managers Report

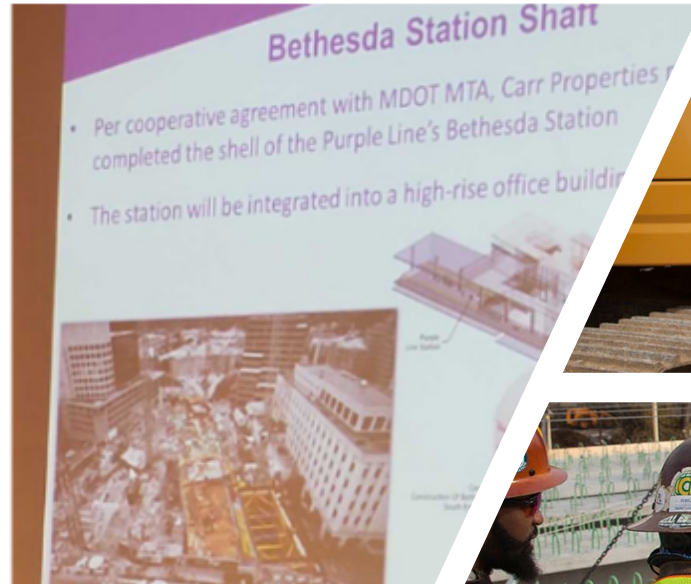
Opening date still uncertain for 16-mile light rail system

BY DAN SCHERE [Follow @Daniel_Schere](#) | Published: 2019-03-21 17:00 | 12

Construction of the Purple Line, a planned 16-mile light rail line between Montgomery and Prince George's counties, is 10 percent complete and work on the Bethesda station tunnel is 50 percent complete, project managers told a County Council committee Thursday afternoon.

The line is now projected to open in the spring of 2023, months behind schedule.

Maryland Transit Authority representative Charles Lattuca and Fred Craig, the CEO of p Transit Partners, said they are doing everything they can t opening date of late 2022.



Purple Line project managers met Thursday afternoon and provide

DAN SCHERE



**Bethesda
Downtown Plan**

community identity equity habitat + health access + mobility water energy

DA
OPENING OCT 1

CIRCULATOR

The graphic features a dark blue background with a large white circle on the left containing a photo of a pedestrian walkway with string lights. A smaller circle at the top right shows a neon sign for 'DA' and a marquee that says 'OPENING OCT 1'. At the bottom center, a circle shows a red and blue 'CIRCULATOR' bus. Six colored circles (purple, orange, green, red, teal, yellow) are arranged in a horizontal row, each containing a key theme of the plan.

approved and adopted • June 2012

Takoma/Langley Crossroads

The cover features a collage of images on the right side, including people in traditional attire, a classical building, and a group of people. The main image is an aerial view of a city block with a grid street pattern.

GREATER
LYTTONSVILLE
Sector Plan

APPROVED AND ADOPTED MAY 2017

The cover has a dark grey background with three white icons: a gear, a star with a caduceus, and a house. The text is in white and purple.

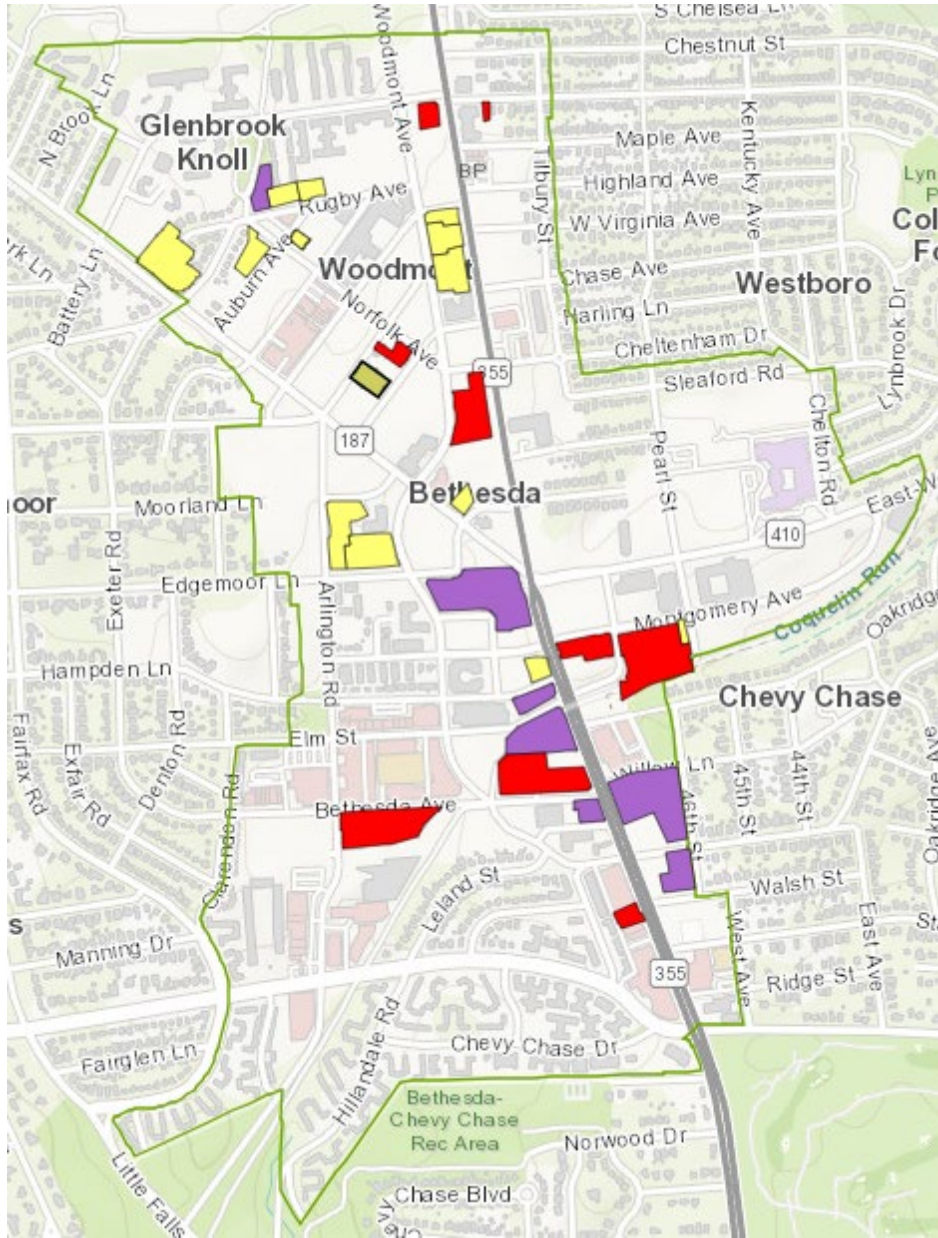
October 2013

Chevy Chase Lake Sector Plan

Approved and Adopted

Montgomery County Planning Department
M-NEPPC

The cover features a photograph of a residential street with a large house and a 'FREE' sign. The design includes a light blue background on the left and a dark orange background on the right.



Development Activity

Bethesda

Bethesda Downtown Sector Plan Density Cap = 32.4 M Square Feet

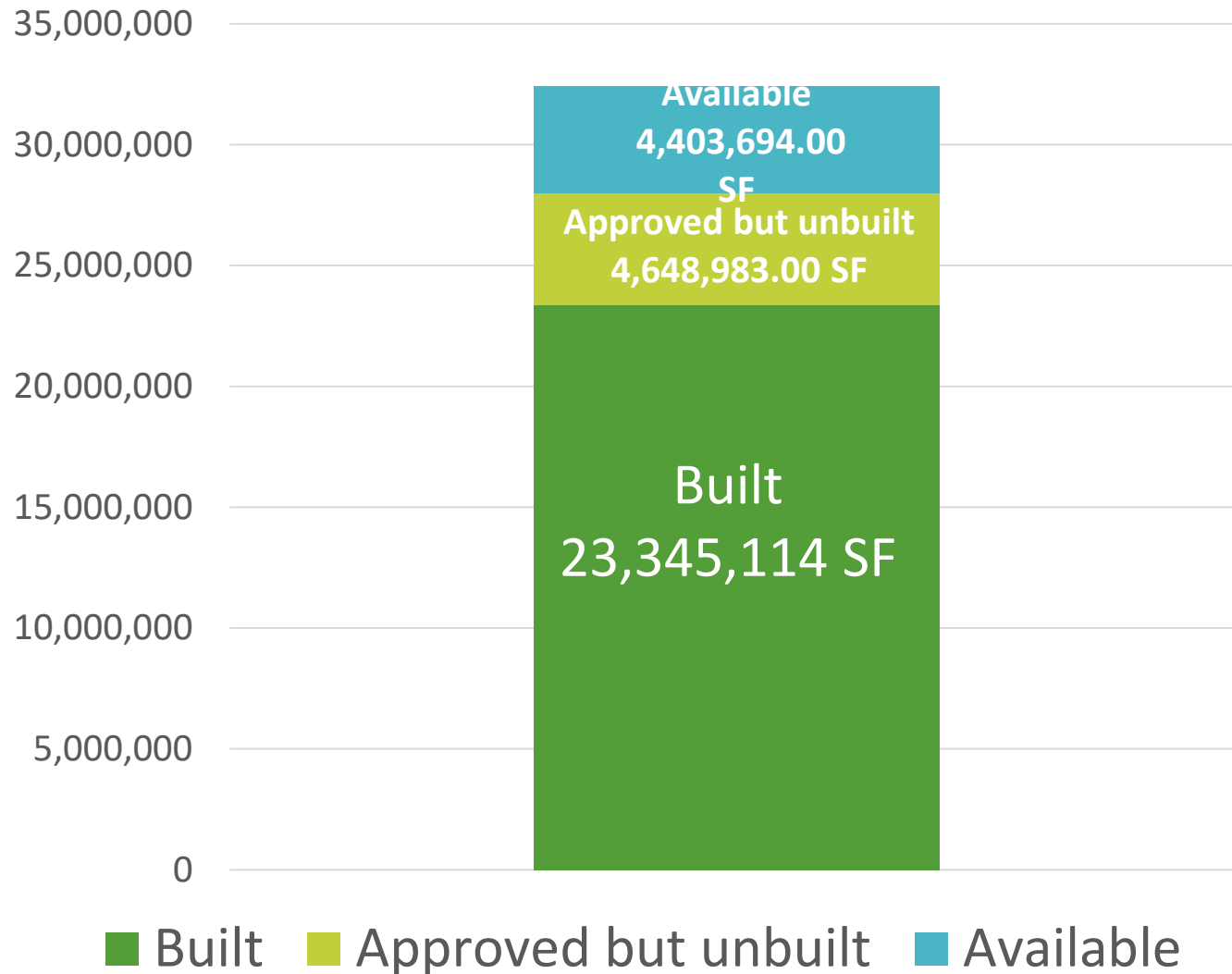
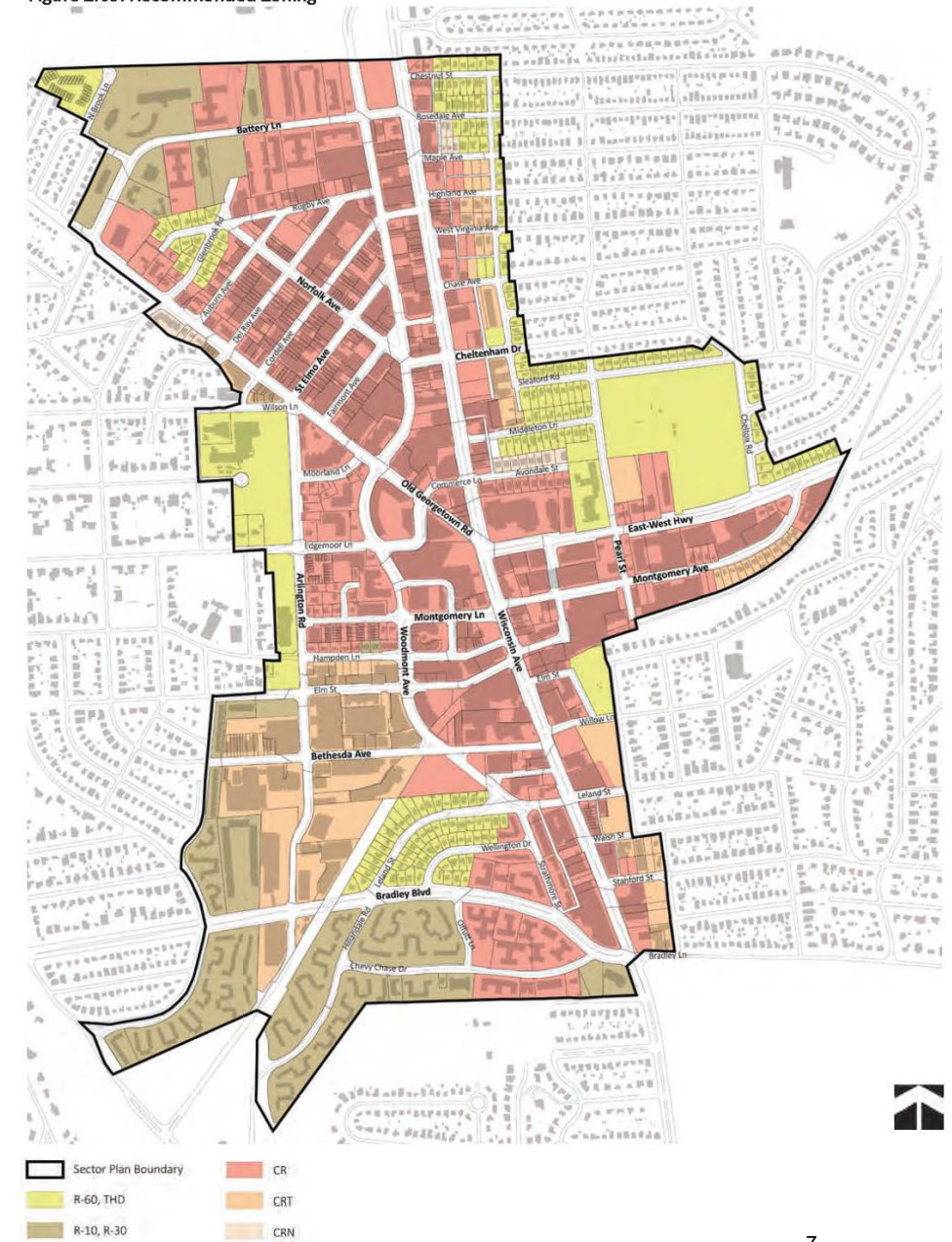


Figure 2.05: Recommended Zoning



25
Total
Projects

3 Built

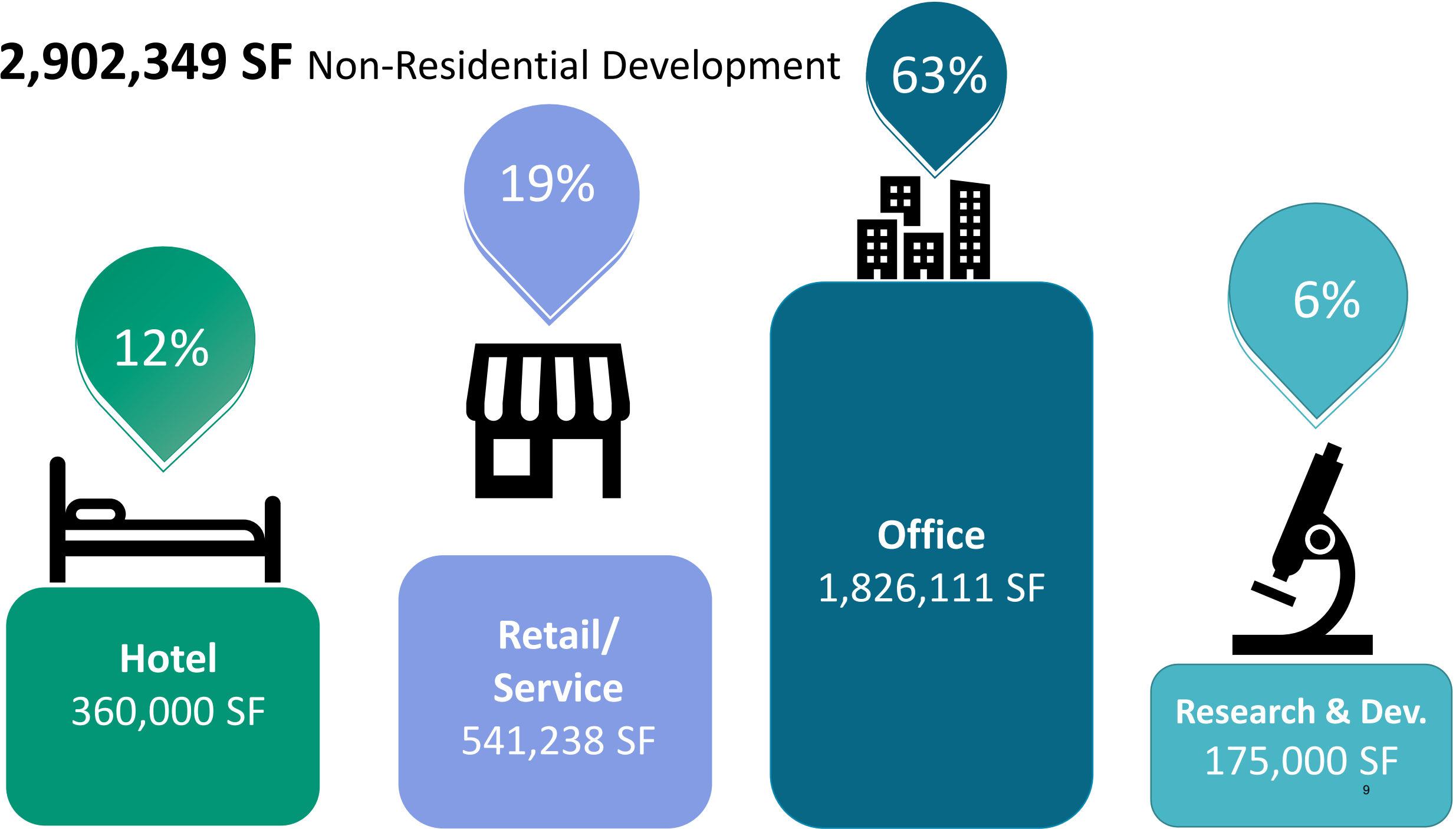
4 under
construction

10
Approved,
unbuilt

8 Under
Review



2,902,349 SF Non-Residential Development



12%



Hotel

360,000 SF

19%



**Retail/
Service**

541,238 SF

63%



Office

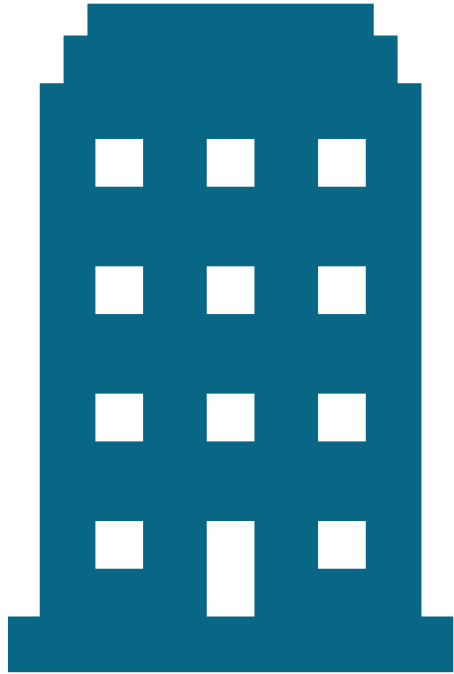
1,826,111 SF

6%



Research & Dev.

175,000 SF



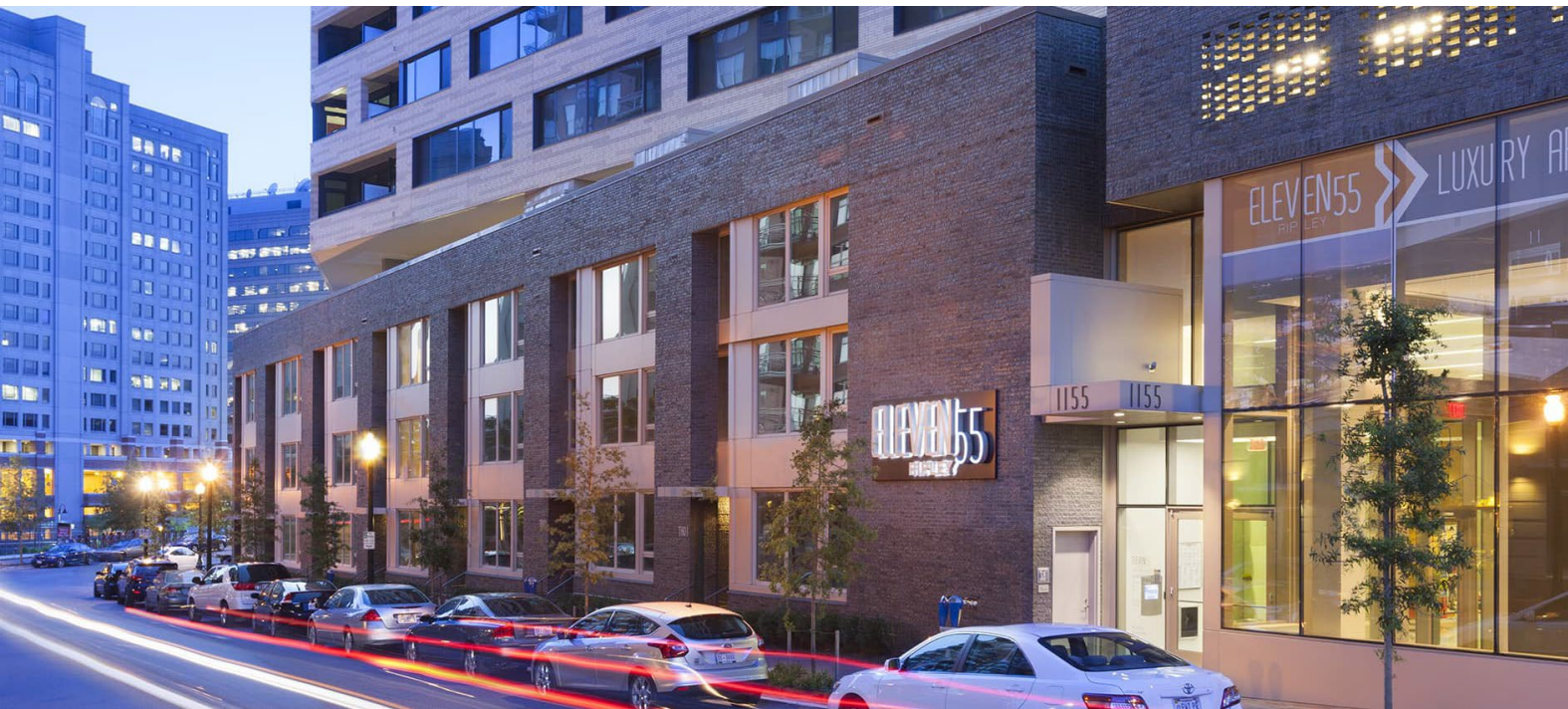
- Built = 417
- Approved = 937
- Under Review = 1,687
- Built & approved combined
 - Total Units = 3,971
 - MPDU's = 596



- Over **\$19,000,000** collected for Park Improvements
- Over 150,000 SF dedicated to public open space



Development Activity **Silver Spring**





Retail/Service

- Built **55,865 SF**
- Approved **80,500 SF**
- Under Review **143,084 SF**
- Total **279,449**



Office

- Under Review
200,000 SF



Residential

- Built **1,654 units**
- Approved **1,665 units**
- Under Review **3,240 units**
- Combined
 - Total **6,826 units**
 - MPDU **889**

Chevy Chase Lake

Illustration 3 Enhance Land Use



Chevy Chase Lake Apartments

- █ New Public Street
- █ New Public Space/Park
- █ 120-foot Height
- █ Properties that may be fully redeveloped before the Purple Line



Greater Lyttonsville Area

Figure 3.1.1: Woodside/16th Street Station Area Proposed Zoning

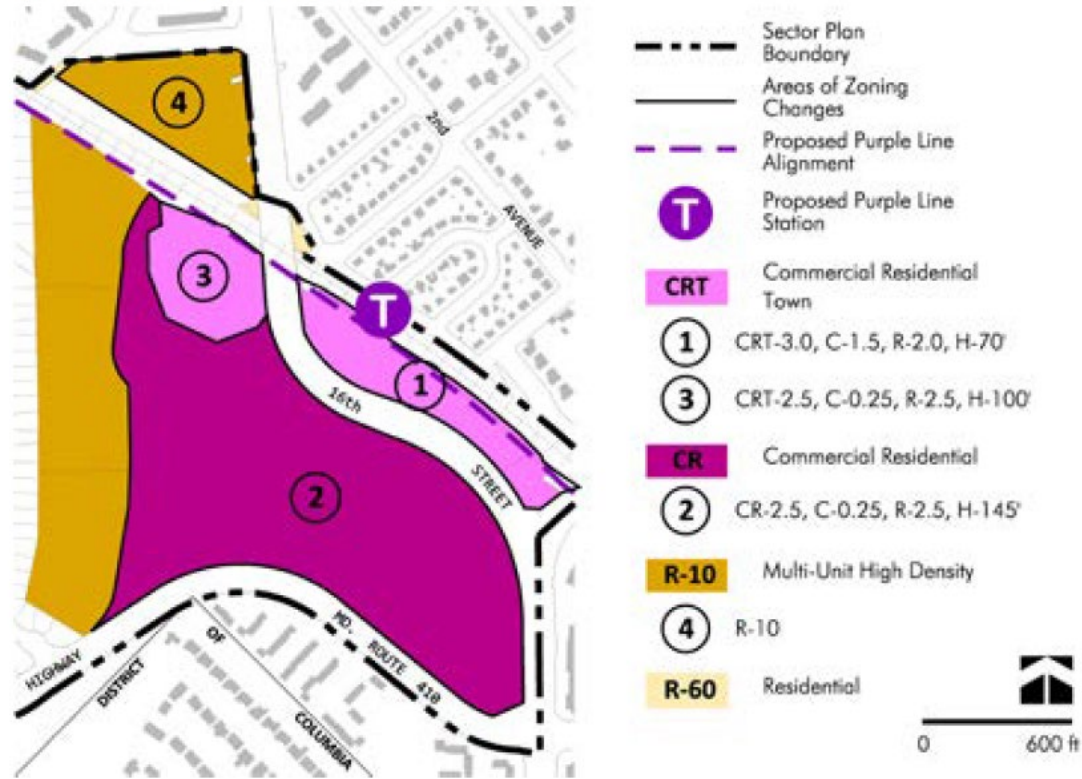
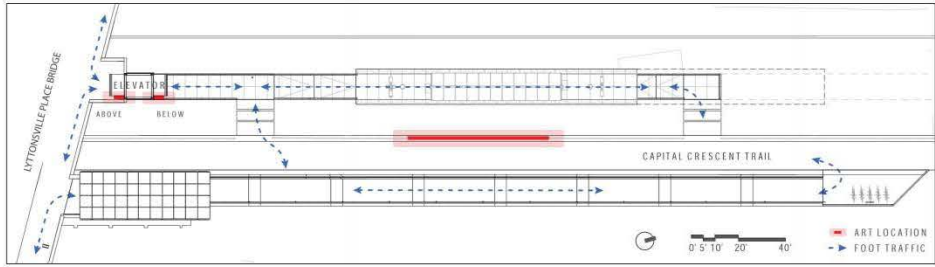


Figure 3.1.3: Illustrative View of Proposed 16th Street Improvements





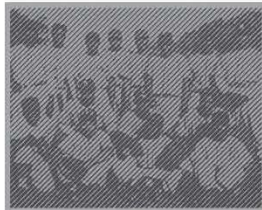
SITE INTEGRATION

To commemorate the historic Talbot Street Bridge, we propose relocating the Bridge's two main steel girders to the Lyttonville Purple Line Station.

One girder will be mounted horizontally on a 12" tall concrete plinth between the Capital Crescent Trail and the rail line.

The other girder will be cut into two pieces and oriented vertically beside the upper and lower entrances of the elevator tower.

Waterjet-cut stainless steel panels will be attached to both sides of both girders archiving the history of the Lyttonville Community.



PUBLIC CALL
Lyttonville citizens will be encouraged to submit family photographs celebrating the community in this sculptural photo album.



PERSPECTIVE RENDERING
FROM CAPITAL CRESCENT TRAIL SOUTHBOUND

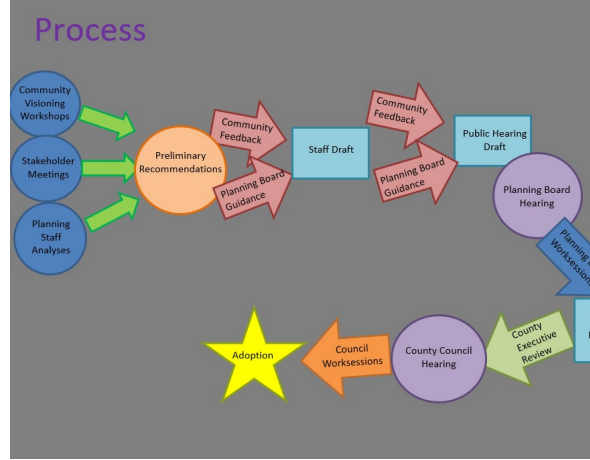
SAMPLE IMAGE PANELS
SOURCED FROM LYTTONSVILLE COMMUNITY



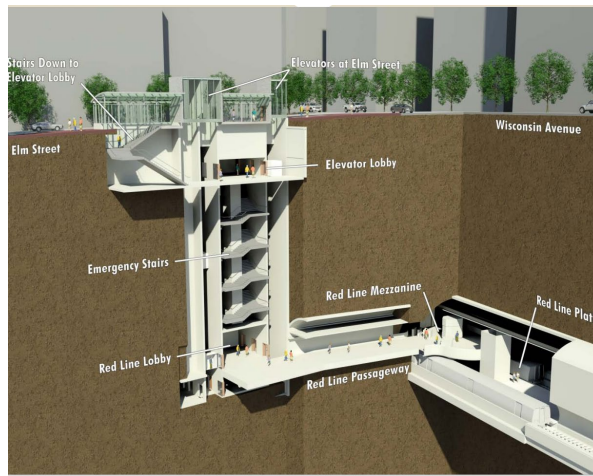
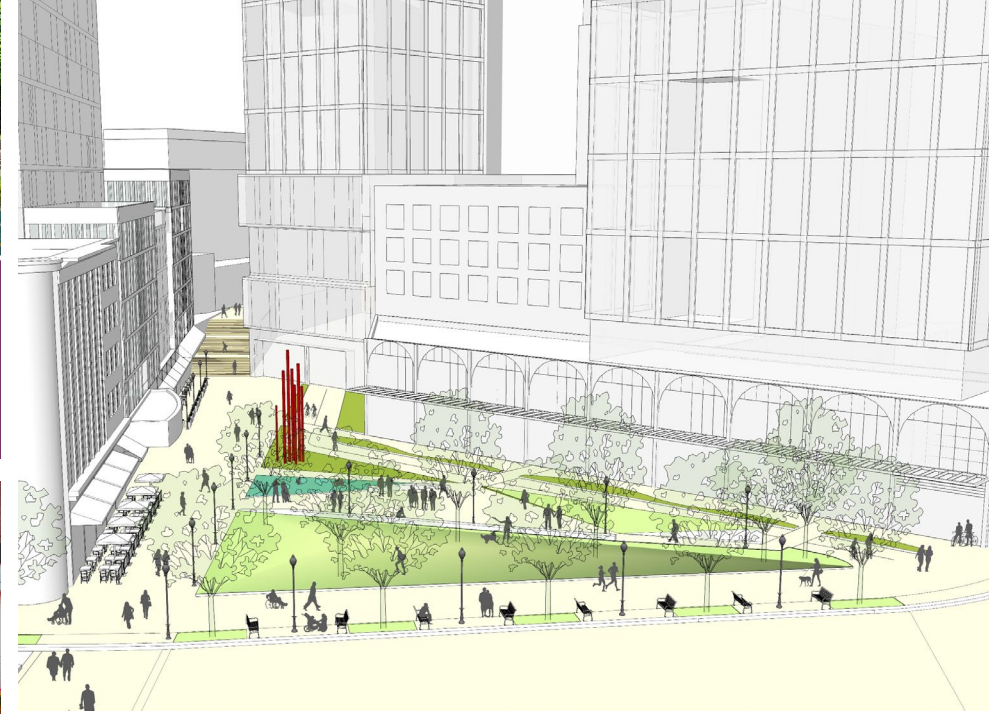
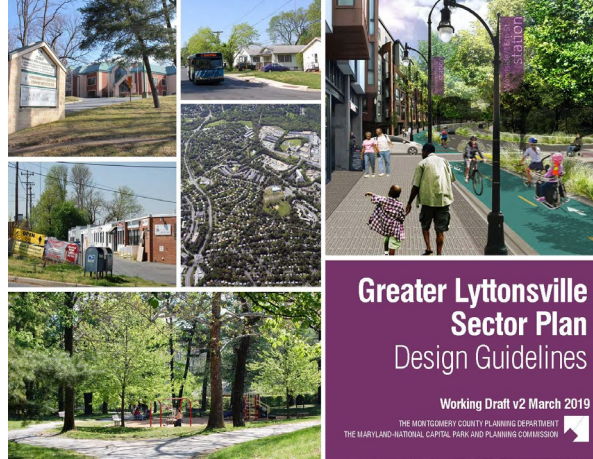
HORIZONTAL GIRDER
ELEVATION FROM PLATFORM



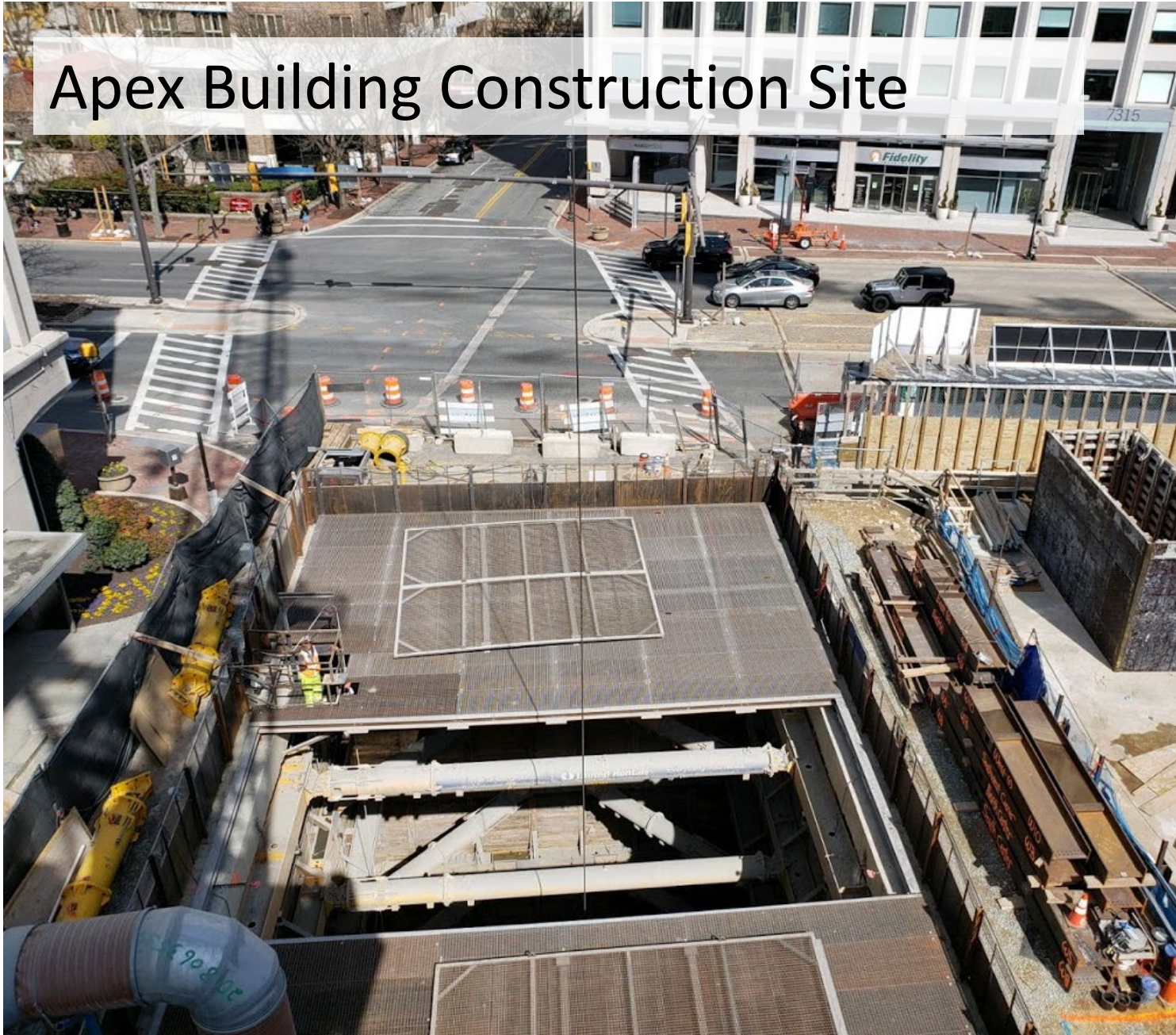
Challenges



Successes



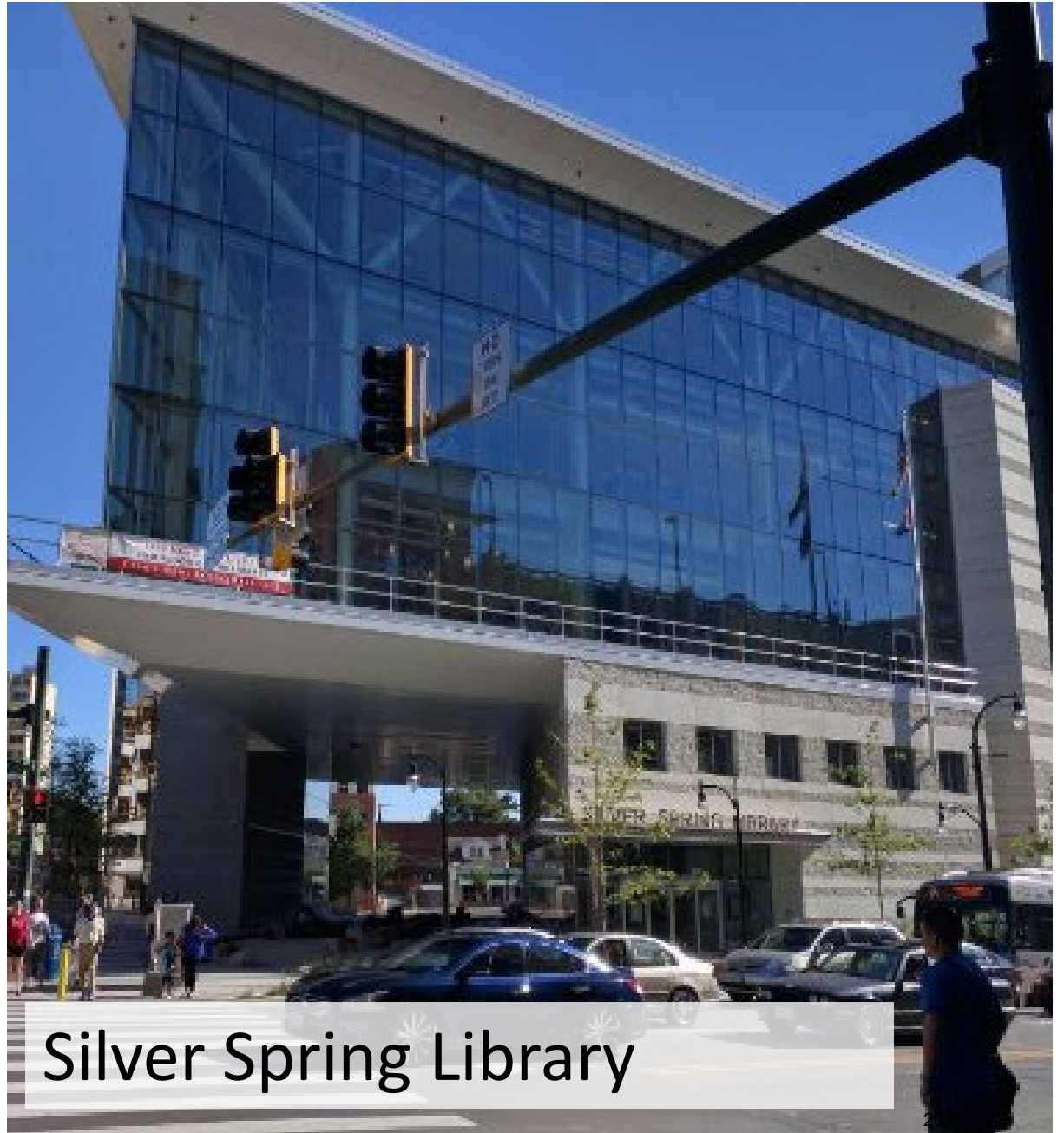
Apex Building Construction Site



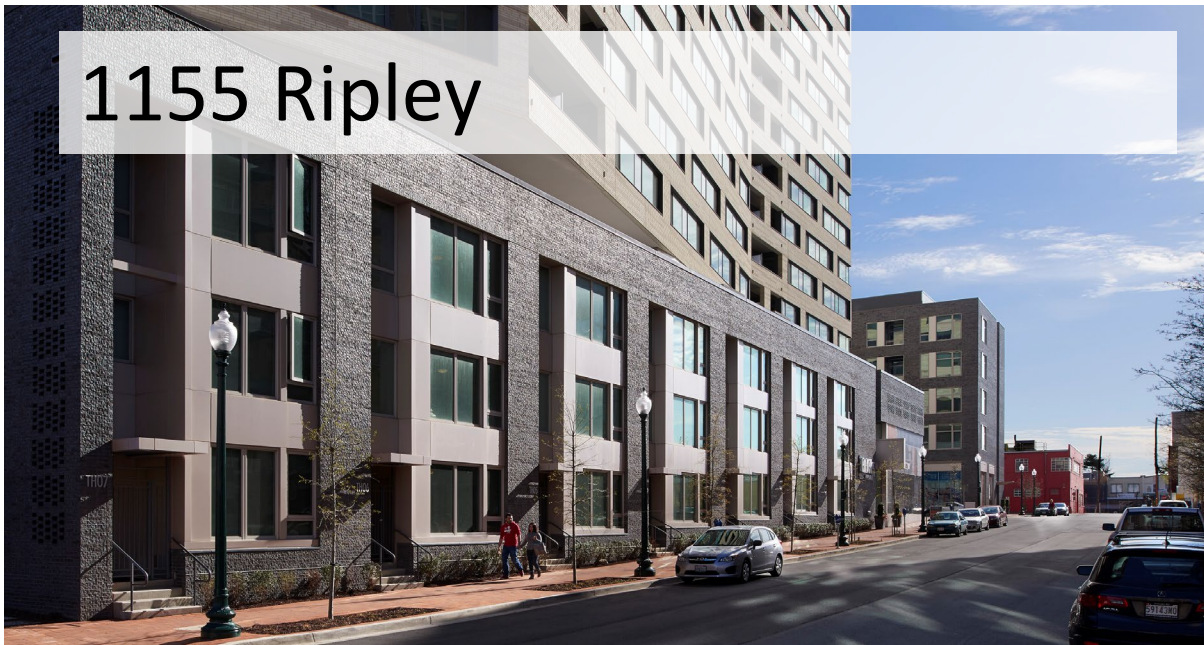


Marriott HQ Construction Site





Silver Spring Library



1155 Ripley



Lindley HOC Project Chevy Chase Lake



Takoma Langley Transit Center