

## 2000 COG Region Population Totals 4,211,964 Persons



Welcome to the first in a series of COG Census 2000 reports.

A Census is:

- **Required by the Constitution to determine congressional representation**
- **A "snapshot" every 10 years of the nation's population**

This first issue of "Our Changing Region" was compiled from the Public Law 94-171 (PL94-171) congressional redistricting data—the first information released from Census 2000. While the federally-defined Washington, DC-MD-VA-WV Primary Metropolitan Statistical Area (or PMSA) includes a number of jurisdictions that are not members of COG, this is the first in a series of publications that will focus on what Census 2000 reveals about the COG region.

### Inside this issue:

Census 2000 Population by Jurisdiction	1
1990 to 2000 Population Change	2
An Increasingly Diverse Region	4
Black/African-American Population	5
Asian Population	6
Hispanic Population	7
More Information	8

Jurisdiction	Census 2000 Population
<b>District of Columbia</b>	<b>572,059</b>
Frederick County	195,277
Montgomery County	873,341
City of Gaithersburg <sup>1</sup>	52,613
City of Rockville <sup>1</sup>	47,388
City of Takoma Park <sup>1</sup>	17,299
Prince George's County	801,515
City of Bowie <sup>1</sup>	50,269
City of College Park <sup>1</sup>	24,657
City of Greenbelt <sup>1</sup>	21,456
<b>Maryland Suburbs</b>	<b>1,870,133</b>
Arlington County	189,453
Fairfax County	969,749
Loudoun County	169,599
Prince William County	280,813
City of Alexandria	128,283
City of Fairfax	21,498
City of Falls Church	10,377
<b>Virginia Suburbs</b>	<b>1,769,772</b>
<b>COG Member Jurisdictions</b>	<b>4,211,964</b>
<b>Washington PMSA</b>	<b>4,493,018</b>

Source: COG tabulation of Census 2000 PL 94-171 Redistricting Data  
 (1) Population in Maryland cities is included in appropriate county totals.

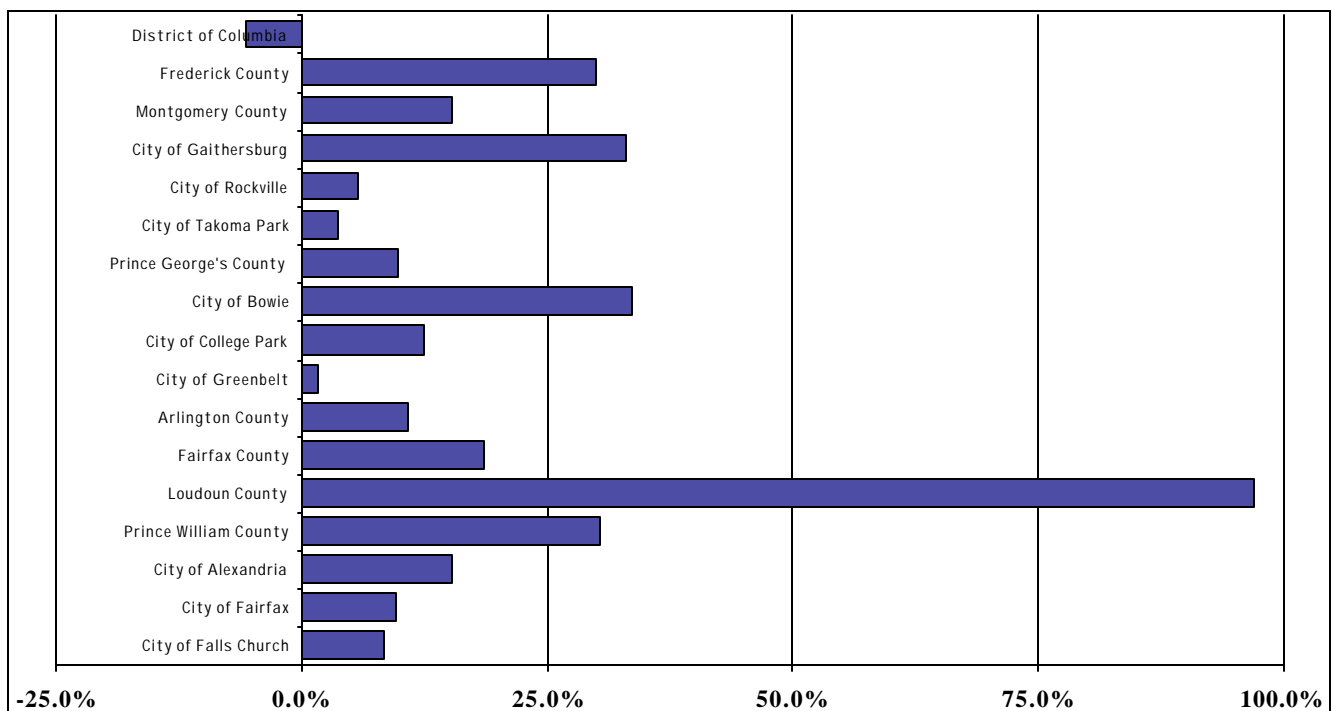
On April 1, 2000 – Census Day – the population of the COG region totaled 4,211,964 people. Required by the U.S. Constitution, the decennial Census of population and housing is a multi-billion dollar effort by the Census Bureau and local governments to accurately count the nation's population. This first issue of "Our Changing Region" was compiled from the Public Law 94-171 (PL94-171) congressional redistricting data—the first information released from Census 2000. Subsequent issues will focus on more detailed population and housing characteristics as the data become available.

## COG Region Population Grew by More Than 14 Percent

COG Member Jurisdiction	Population		Change 1990 to 2000		Share of Regional Growth
	2000	1990	Number	Percent	
<b>District of Columbia</b>	<b>572,059</b>	<b>606,900</b>	<b>-34,841</b>	<b>-5.7%</b>	<b>-6.5%</b>
Frederick County	195,277	150,208	45,069	30.0%	8.4%
Montgomery County	873,341	757,027	116,314	15.4%	21.7%
City of Gaithersburg	52,613	39,542	13,071	33.1%	2.4%
City of Rockville <sup>1</sup>	47,388	44,835	2,553	5.7%	0.5%
City of Takoma Park <sup>1</sup>	17,299	16,700	599	3.6%	0.1%
Prince George's County	801,515	729,268	72,247	9.9%	13.5%
City of Bowie <sup>1</sup>	50,269	37,589	12,680	33.7%	2.4%
City of College Park <sup>1</sup>	24,657	21,927	2,730	12.5%	0.5%
City of Greenbelt <sup>1</sup>	21,456	21,096	360	1.7%	0.1%
<b>Maryland Suburbs</b>	<b>1,870,133</b>	<b>1,636,503</b>	<b>233,630</b>	<b>14.3%</b>	<b>43.5%</b>
Arlington County	189,453	170,936	18,517	10.8%	3.4%
Fairfax County	969,749	818,584	151,165	18.5%	28.2%
Loudoun County	169,599	86,129	83,470	96.9%	15.5%
Prince William County	280,813	215,686	65,127	30.2%	12.1%
City of Alexandria	128,283	111,183	17,100	15.4%	3.2%
City of Fairfax	21,498	19,622	1,876	9.6%	0.3%
City of Falls Church	10,377	9,578	799	8.3%	0.1%
<b>Virginia Suburbs</b>	<b>1,769,772</b>	<b>1,431,718</b>	<b>338,054</b>	<b>23.6%</b>	<b>63.0%</b>
<b>TOTAL</b>	<b>4,211,964</b>	<b>3,675,121</b>	<b>536,843</b>	<b>14.6%</b>	<b>100.0%</b>

<sup>1</sup> Population in Maryland cities is included in appropriate county totals.

### Percent Change in Population by Jurisdiction, 1990 to 2000



## 1990 to 2000 Population Change

Between 1990 and 2000, the population of the COG region grew by more than 536,800 people or an increase of 14.6 percent.

With a total population of 969,749, Fairfax County contains the greatest number of people, followed by Montgomery County (873,341), and Prince George's County (801,515).

The District of Columbia's population of 572,059 was approximately 6 percent lower than the 1990 total of 606,900.

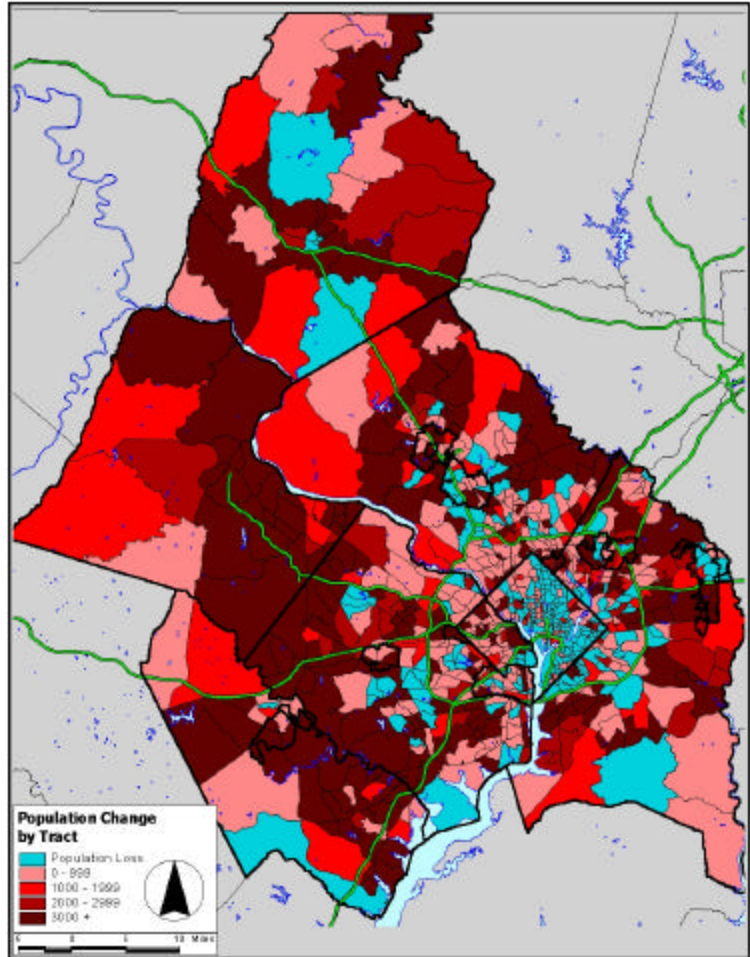
As seen in the table on page 2, population growth varied by jurisdiction, with the fastest rates of change in the region's suburbs. The map on this page shows population change between 1990 and 2000 by Census Tract for the COG member jurisdictions.

While several jurisdictions experienced unprecedented growth during the 1990s, for the COG region as a whole, population growth was actually slower than during the 1980s when the region grew by more than 594,000 people or 19.3 percent.

Population growth in Northern Virginia exceeded that of suburban Maryland during the 1990s, adding 338,054 people during the period. However, the Maryland jurisdictions, which grew by 233,630, continue to contain a larger share of the region's total population with more than 1,636,500 people.

In absolute terms, the greatest increases in population occurred in the region's two most populous jurisdictions, Fairfax and Montgomery counties, which added, respectively, 151,165 and 116,314 people.

Loudoun County saw the third-largest increase in population, adding 83,470 people, but saw the fastest rate of change: the population of Loudoun County nearly doubled (+96.9 per-



cent) between 1990 and 2000.

Other jurisdictions experiencing rapid rates of growth during the 1990s include the Cities of Bowie and Gaithersburg which grew, respectively, by 33.7 and 33.1 percent; Prince William County, which grew by 30.2 percent; and Frederick County, which grew by 30.0 percent.

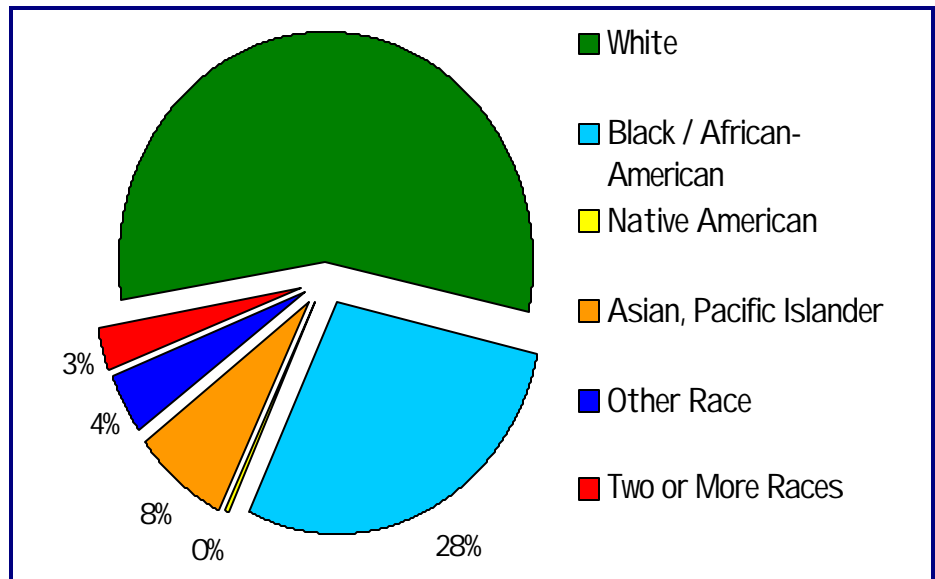
Census 2000 clearly shows how the Washington region continues to become more racially and ethnically diverse.

More than half (57 percent) of the region's population is White; 28 percent are Black or African American; 8 percent are Asian; and 4 percent indicated that they were some other race.

Nearly 410,000 people or 10 percent of the region's population also indicated that they were Hispanic or Latino. People of Hispanic origin can be of any race and are included in the detailed race counts.

Census 2000 was also the first enumeration of the region for which residents could indicate that they were of more than one race. According to the Census counts, 131,734 people or 3 percent of the region's population is multi-racial.

### An Increasingly Diverse Region



COG Member Jurisdictions	TOTAL Population	Population by Race							Total Hispanic <sup>1</sup>
		Population of One Race						Population of Two or More Races	
		Total Population of One Race	White	Black or African-American	American Indian and Alaska Native	Asian, Hawaiian, Other Pacific	Other Race		
<b>District of Columbia</b>	<b>572,059</b>	<b>558,613</b>	<b>176,101</b>	<b>343,312</b>	<b>1,713</b>	<b>15,537</b>	<b>21,950</b>	<b>13,446</b>	<b>44,953</b>
Frederick County	195,277	192,401	174,432	12,429	404	3,330	1,806	2,876	4,664
Montgomery County	873,341	843,224	565,719	132,256	2,544	99,063	43,642	30,117	100,604
City of Gaithersburg <sup>2</sup>	52,613	50,302	30,625	7,680	188	7,274	4,535	2,311	10,398
City of Rockville <sup>2</sup>	47,388	45,907	32,120	4,317	160	7,045	2,265	1,481	5,529
City of Takoma Park <sup>2</sup>	17,299	16,439	8,440	5,876	76	760	1,287	860	2,494
Prince George's County	801,515	780,631	216,729	502,550	2,795	31,479	27,078	20,884	57,057
City of Bowie <sup>2</sup>	50,269	49,111	31,492	15,500	150	1,499	470	1,158	1,468
City of College Park <sup>2</sup>	24,657	24,088	16,969	3,929	81	2,476	633	569	1,366
City of Greenbelt <sup>2</sup>	21,456	20,711	8,526	8,871	50	2,597	667	745	1,383
<b>Maryland Suburbs</b>	<b>1,870,133</b>	<b>1,816,256</b>	<b>956,880</b>	<b>647,235</b>	<b>5,743</b>	<b>133,872</b>	<b>72,526</b>	<b>53,877</b>	<b>162,325</b>
Arlington County	189,453	181,224	130,601	17,705	662	16,470	15,786	8,229	35,268
Fairfax County	969,749	934,311	677,904	83,098	2,561	126,729	44,019	35,438	106,958
Loudoun County	169,599	165,469	140,419	11,683	358	9,172	3,837	4,130	10,089
Prince William County	280,813	270,635	193,574	52,691	1,094	11,069	12,207	10,178	27,338
City of Alexandria	128,283	122,800	76,702	28,915	355	7,361	9,467	5,483	18,882
City of Fairfax	21,498	20,797	15,675	1,090	73	2,633	1,326	701	2,932
City of Falls Church	10,377	10,125	8,817	340	25	682	261	252	876
<b>Virginia Suburbs</b>	<b>1,769,772</b>	<b>1,705,361</b>	<b>1,243,692</b>	<b>195,522</b>	<b>5,128</b>	<b>174,116</b>	<b>86,903</b>	<b>64,411</b>	<b>202,343</b>
<b>COG Member Jurisdictions</b>	<b>4,211,964</b>	<b>4,080,230</b>	<b>2,376,673</b>	<b>1,186,069</b>	<b>12,584</b>	<b>323,525</b>	<b>181,379</b>	<b>131,734</b>	<b>409,621</b>

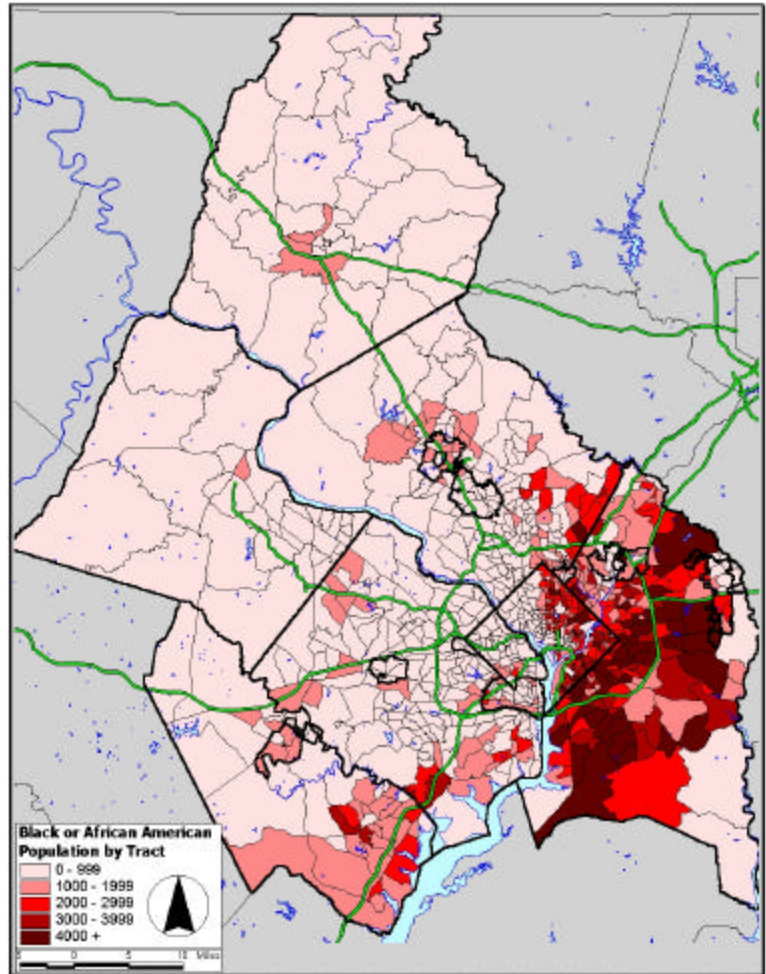
<sup>1</sup> People who identified themselves as "Hispanic" or "Latino" can be of any race and are included in the counts for single and multi-race categories.

<sup>2</sup> Population in Maryland cities is included in appropriate county totals.

# Black / African-American Population

COG Member Jurisdictions	Local Share of the Region's Black Population	Proportion of Local Population Which is Black
<b>District of Columbia</b>	<b>28.9%</b>	<b>60.0%</b>
Frederick County	1.0%	6.4%
Montgomery County	11.2%	15.1%
City of Gaithersburg <sup>1</sup>	0.6%	14.6%
City of Rockville <sup>1</sup>	0.4%	9.1%
City of Takoma Park <sup>1</sup>	0.5%	34.0%
Prince George's County	42.4%	62.7%
City of Bowie <sup>1</sup>	1.3%	30.8%
City of College Park <sup>1</sup>	0.3%	15.9%
City of Greenbelt <sup>1</sup>	0.7%	41.3%
<b>Maryland Suburbs</b>	<b>54.6%</b>	<b>34.6%</b>
Arlington County	1.5%	9.3%
Fairfax County	7.0%	8.6%
Loudoun County	1.0%	6.9%
Prince William County	4.4%	18.8%
City of Alexandria	2.4%	22.5%
City of Fairfax	0.1%	5.1%
City of Falls Church	0.0%	3.3%
<b>Virginia Suburbs</b>	<b>16.5%</b>	<b>11.0%</b>
<b>COG Member Jurisdictions</b>	<b>100.0%</b>	<b>28.2%</b>

<sup>1</sup> Population in Maryland cities is included in appropriate county.



According to the 2000 Census, more than 1,186,000 persons or approximately 28 percent of the COG region's population is Black or African-American.

The map shows the number of African-Americans in the COG region by Census Tract.

More than half (54.6 percent) of the region's Black population resides in the Maryland suburbs, 28.9 percent reside in the District of Columbia, and 16.5 percent in Northern Virginia.

Among individual COG jurisdictions, the greatest number of African-Americans reside within Prince

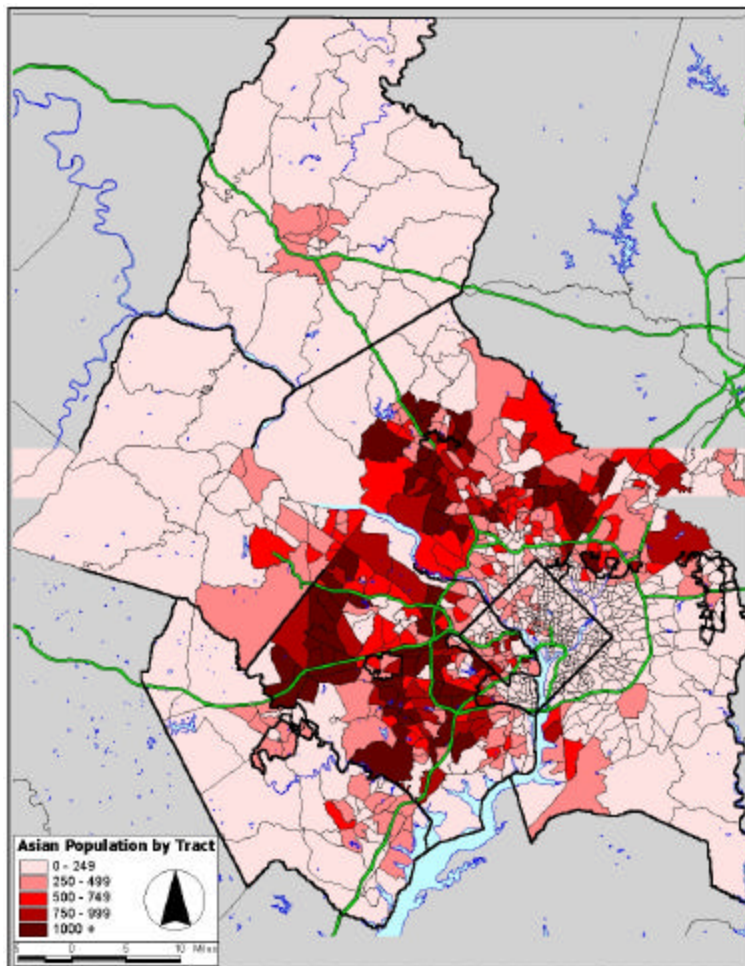
George's County, Maryland: slightly more than 2 of every 5 (42.4 percent) African-Americans in metropolitan Washington live in Prince George's.

African-Americans in Prince George's County also comprise the highest local share of the County's population (62.7 percent); in the District of Columbia, they comprise 60 percent..

## Asian Population

COG Member Jurisdictions	Local Share of the Region's Asian Population	Proportion of Local Population Which is Asian
<b>District of Columbia</b>	<b>4.7%</b>	<b>2.7%</b>
Frederick County	1.0%	1.7%
Montgomery County	30.8%	11.3%
City of Gaithersburg <sup>1</sup>	2.3%	13.8%
City of Rockville <sup>1</sup>	2.2%	14.8%
City of Takoma Park <sup>1</sup>	0.2%	4.4%
Prince George's County	9.7%	3.9%
City of Bowie <sup>1</sup>	0.5%	2.9%
City of College Park <sup>1</sup>	0.8%	10.0%
City of Greenbelt <sup>1</sup>	0.8%	12.1%
<b>Maryland Suburbs</b>	<b>41.4%</b>	<b>7.1%</b>
Arlington County	5.1%	8.6%
Fairfax County	39.3%	13.0%
Loudoun County	2.8%	5.3%
Prince William County	3.3%	3.8%
City of Alexandria	2.3%	5.7%
City of Fairfax	0.8%	12.2%
City of Falls Church	0.2%	6.5%
<b>Virginia Suburbs</b>	<b>53.8%</b>	<b>9.8%</b>
<b>COG Member Jurisdictions</b>	<b>100.0%</b>	<b>7.6%</b>

<sup>1</sup> Population in Maryland cities is included in appropriate county..



The table shows the regional and local shares of the Asian population for the COG member jurisdictions. As seen in the table, more than 323,000 persons or 7.6 percent of the region's population are Asian.

More than half (53.8 percent) of the region's Asian population resides in Northern Virginia, while more than two-fifths (41.4 percent) reside in suburban Maryland. Slightly more than 15,500 people or about 4.7 percent of the region's Asian population resides in the District of Columbia.

Fairfax County is home to the greatest share—

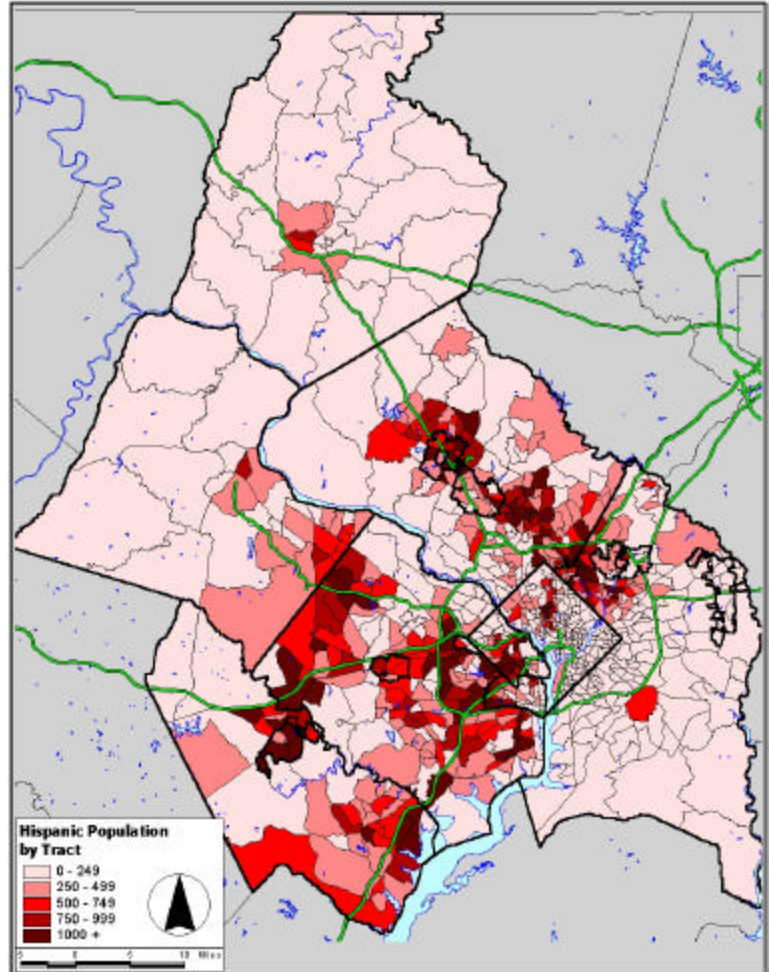
39.3 percent or nearly two-fifths—of the Asian population of the region. Nearly 31 percent of the region's Asian population resides in Montgomery County .

The Cities of Rockville and Gaithersburg have the highest local share of population, 14.8 percent and 13.8 percent respectively, which is Asian.

# Hispanic Population

COG Member Jurisdictions	Local Share of the Region's Hispanic Population	Proportion of Local Population Which is Hispanic
<b>District of Columbia</b>	<b>11.0%</b>	<b>7.9%</b>
Frederick County	1.1%	2.4%
Montgomery County	24.6%	11.5%
City of Gaithersburg <sup>1</sup>	2.5%	19.8%
City of Rockville <sup>1</sup>	1.3%	11.7%
City of Takoma Park <sup>1</sup>	0.6%	14.4%
Prince George's County	13.9%	7.1%
City of Bowie <sup>1</sup>	0.4%	2.9%
City of College Park <sup>1</sup>	0.3%	5.5%
City of Greenbelt <sup>1</sup>	0.3%	6.4%
<b>Maryland Suburbs</b>	<b>39.6%</b>	<b>8.7%</b>
Arlington County	8.6%	18.6%
Fairfax County	26.1%	11.0%
Loudoun County	2.5%	5.9%
Prince William County	6.7%	9.7%
City of Alexandria	4.6%	14.7%
City of Fairfax	0.7%	13.6%
City of Falls Church	0.2%	8.4%
<b>Virginia Suburbs</b>	<b>49.4%</b>	<b>11.4%</b>
<b>COG Member Jurisdictions</b>	<b>100.0%</b>	<b>9.7%</b>

<sup>1</sup> Population in Maryland cities is included in appropriate county.



As shown in the table above, approximately 1 of every 10 persons (9.7 percent) in the COG region is Hispanic or Latino.

People who identified themselves as “Hispanic” or of “Latino” origin can be of any race and are included in the counts for single and multi-race categories.

Nearly half (49.4 percent) of all Latinos in the COG region reside in Northern Virginia; nearly two-fifths (39.6 percent) reside in the Maryland suburbs, and 11 percent reside in the District of Columbia. Together, Fairfax and Montgomery counties are home to half of the region’s Hispanic

population.

Approximately one-fifth (19.8 percent) of the population of the City of Gaithersburg is Latino—the greatest local share among all COG jurisdictions. In Arlington County, 18.6 percent of the population is Hispanic, while 14.7 percent of the population of the City of Alexandria is Latino.

## Upcoming Census 2000 Data and Products



During the next few years, the Census Bureau will release several Census 2000 data products. The content and geographic detail of each Census data file varies depending upon whether or not the information was collected from the Census "short form" (*questions that were asked of ALL households*) or "long form" (*more-detailed questions asked of one of every six households*) questionnaire. COG will prepare both summary newsletters and in-depth reports from each Census 2000 data file.

### Summary File 1 (SF1)

#### Release Date:

June 2001 to September 2001

#### Contents:

Population and housing unit characteristics from questions asked of ALL households (100 % count). Population by age, race, gender, and Hispanic or Latino origin; household type and size; tenure (owned or rented unit); age and race of householder; value of unit; and amount of rent paid.

**Media:** Internet; CD-ROM

**Geographic Detail:** Census tracts; Census blocks

### Summary File 2 (SF2)

#### Release Date:

September 2001 to December 2001

#### Contents:

Population and housing unit characteristics iterated for many detailed race and Hispanic or Latino categories.

**Media:** Internet; CD-ROM

**Geographic Detail:** Census tracts

### Summary File 3 (SF3)

#### Release Date:

June 2002 to September 2002

#### Contents:

Detailed socioeconomic and housing characteristics compiled from the Census long-form (16% sample) questionnaire. Population by age, race and gender; ancestry; educational attainment, labor force and employment status; income and poverty status; commuting characteristics

**Media:** Internet; CD-ROM

**Geographic Detail:** Census tracts ; Census block groups

*The Metropolitan Washington Council of Governments (COG) is the regional organization of the Washington region's 17 major local governments.*

*COG provides a focus for action and develops sound regional responses to such issues as the environment, affordable housing, economic development, health and family concerns, human services, population growth, public safety, and transportation. In addition, COG is an official Census Bureau State Data Center Affiliate and maintains printed Census data and reports from the 1940 Census through Census 2000.*

*For more information on this and other COG publications, contact COG's Information Center:*

*Metropolitan Washington Council of Governments  
777 North Capitol Street, NE, Suite 300  
Washington, DC 20002  
Phone: (202) 962-3256  
e-mail: [infocntr@mwkog.org](mailto:infocntr@mwkog.org)*

