

ITEM 9 – Information

December 21, 2016

Coordination Efforts with the Baltimore Regional Transportation Board (BRTB), the MPO for the Baltimore Region

Staff

Recommendation: Briefing.

Issues: None

Background: Coordination efforts between the Baltimore MPO and TPB will be highlighted.



MEMORANDUM

TO: Transportation Planning Board
FROM: Lyn Erickson, Plan Development and Coordination Program Director
SUBJECT: Coordination with the Baltimore Regional Transportation Board
DATE: December 15, 2016

The Baltimore Regional Transportation Board (BRTB), which is the Metropolitan Planning Organization (MPO) for the Baltimore Urbanized Area, is conducting its annual “Retreat” at the MWCOG facilities on December 21, 2016. In the spirit of coordination and the continuing, cooperative and comprehensive (3-C) planning process, TPB staff has invited the BRTB to participate in the TPB Board meeting on December 21, 2016. The purpose of the invitation is to further strengthen the relationship between the two MPOs given the importance of coordinating due to geographic proximity, shared travel patterns and the mutual dependence of each region for economic growth, among other things.

THE BRTB

The mission of the BRTB is to provide regional transportation planning and policy making for the Baltimore region. The BRTB must meet the same federal requirements that the TPB must meet. The BRTB provides overall program management of the MPO budget and work plan, called the Unified Planning Work Program (UPWP). The BRTB provides policy direction and oversight in the development of their federally mandated Long-Range Transportation Plan (the current plan is called “Maximize2040”), the short range Transportation Improvement Program (TIP) and the Air Quality Conformity Determination.

Please see the attached map which delineates the BRTB Planning Area and the boundary that is shared between the two MPOs. The BRTB is located entirely within the State of Maryland. The BRTB has 13 members (9 voting, 4 non-voting*):

13 Member MPO Board (9 voting, 4 non-voting)	
Voting Members	Non-Voting Members
Anne Arundel County	Queen Anne’s County
Baltimore County	Maryland Department of Planning
Carroll County	Maryland Department of the Environment
Harford County	Maryland Transit Administration
Howard County	
City of Annapolis	
City of Baltimore	
Maryland Department of Transportation	
Representative of Public Transit (Harford Transit)	

The BRTB planning area has a population of 2,684,787 people and has 1,516,318 jobs. The BRTB's FY 2017 UPWP budget has \$6.5 million programmed to carry out the federal planning responsibilities.

Like the TPB, the BRTB has a number of committees and subcommittees that focus on specific technical and policy areas. Through this diverse group of committees, the BRTB is able to learn more about specific areas of interest, receive feedback and recommendations, and engage both professionals in related fields and the general public. The work of the committees also aids the BRTB as it works to ensure that transportation planning is not only meeting federal requirements, but is also integrated into the region's efforts to address economic development and quality of life issues. TPB staff participate in several of these subcommittees.

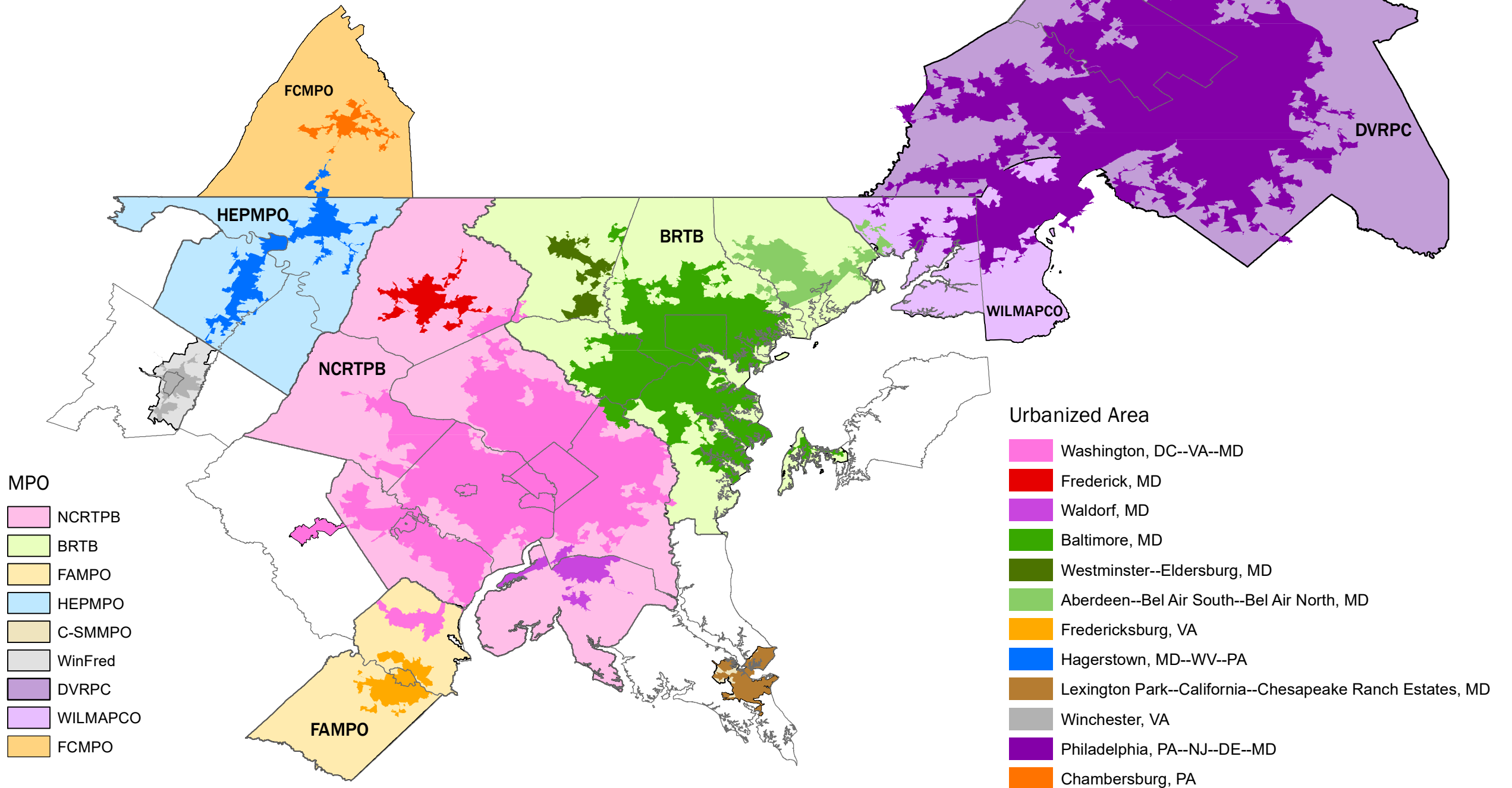
BRTB Subcommittees:

- Technical Committee
- Public Advisory Committee
- Interagency Consultation Group (Air Quality)
- Cooperative Forecasting Group
- Freight Movement Task Force
- Bicycle and Pedestrian Advisory Group
- Safety Subcommittee
- Traffic Incident Management for the Baltimore Region (TIMBR)
- Traffic Signal Subcommittee
- Transportation and Public Works
- Ad Hoc (Point to Port Workgroup)

The TPB staff coordinates with the BRTB staff in virtually every aspect of transportation planning, and we are looking forward to extending that relationship to the Board members through this and future meetings together.

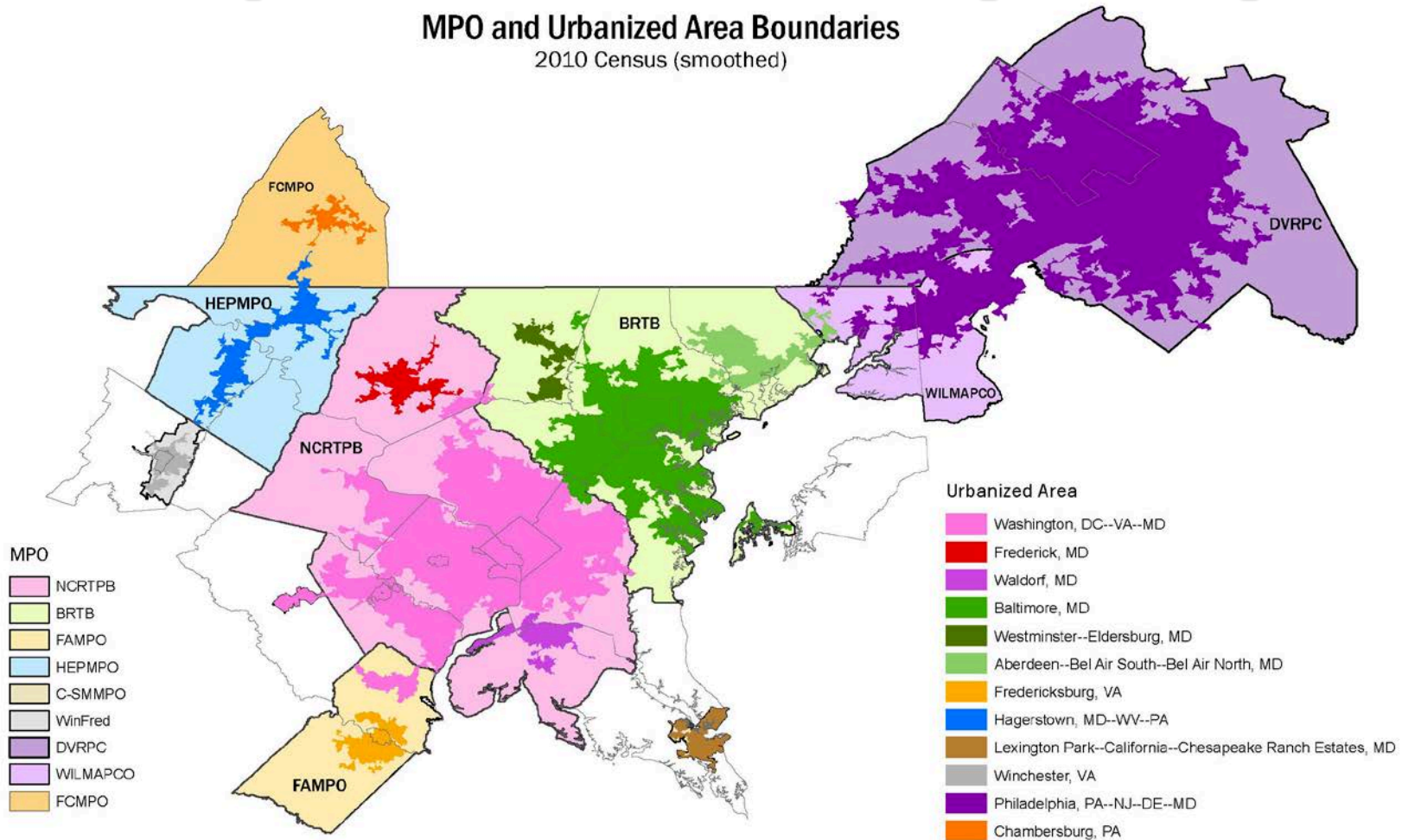
MPO and Urbanized Area Boundaries

2010 Census (smoothed)



Baltimore Regional Transportation Board (BRTB)

MPO and Urbanized Area Boundaries
2010 Census (smoothed)

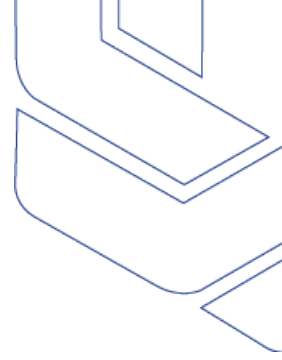


Baltimore Regional Transportation Board (BRTB)

- 13 Member MPO Board (9 voting, 4 non-voting*)
 - Anne Arundel, Baltimore, Carroll, Harford, Howard & Queen Anne's* Counties
 - Cities of Annapolis & Baltimore
 - State Agencies (MDOT, MDP*, MDE*, MTA*)
 - Representative of Public Transit (Harford Transit)

Population	2010	2040	Chg	% Chg
Baltimore Region	2,684,787	3,064,183	379,396	14.1%
Washington DC Region	5,052,848	6,665,330	1,612,482	31.9%
Employment	2010	2040	Chg	% Chg
Baltimore Region	1,516,318	1,918,789	402,471	26.5%
Washington DC Region	2,997,743	4,125,017	1,127,274	37.6%

Baltimore Regional Transportation Board (BRTB)

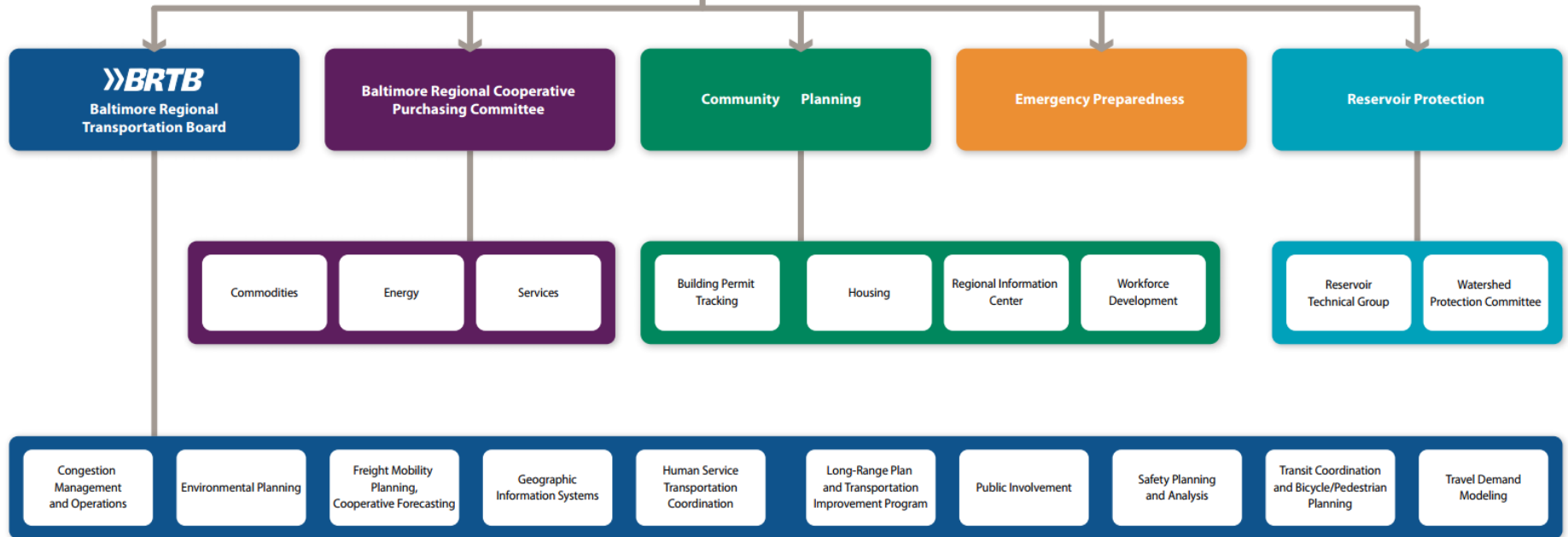


- BRTB Subcommittees
 - Technical Committee
 - Public Advisory Committee
 - Interagency Consultation Group (Air Quality)
 - Cooperative Forecasting Group
 - Freight Movement Task Force
 - Bicycle and Pedestrian Advisory Group
 - Safety Subcommittee
 - Traffic Incident Management for the Baltimore Region (TIMBR)
 - Traffic Signal Subcommittee
 - Transportation and Public Works
 - Ad Hoc (Point to Port Workgroup)

Baltimore Metropolitan Council (BMC) and the BRTB



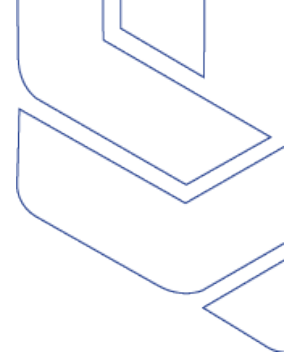
Baltimore Metropolitan Council



Baltimore Metropolitan Council



Thank you



BRTB Chair

Howard County Executive

Allan H. Kittleman

BMC Director of Transportation

Todd Lang

