

Potential for Leveraging CapWIN to Implement CapCom

Special Transportation Planning Board Work Session
Development of Regional Transportation Coordination Program

Tom Jacobs
Operations Manager, Mid-Atlantic Interoperability Partnership
July 20, 2005

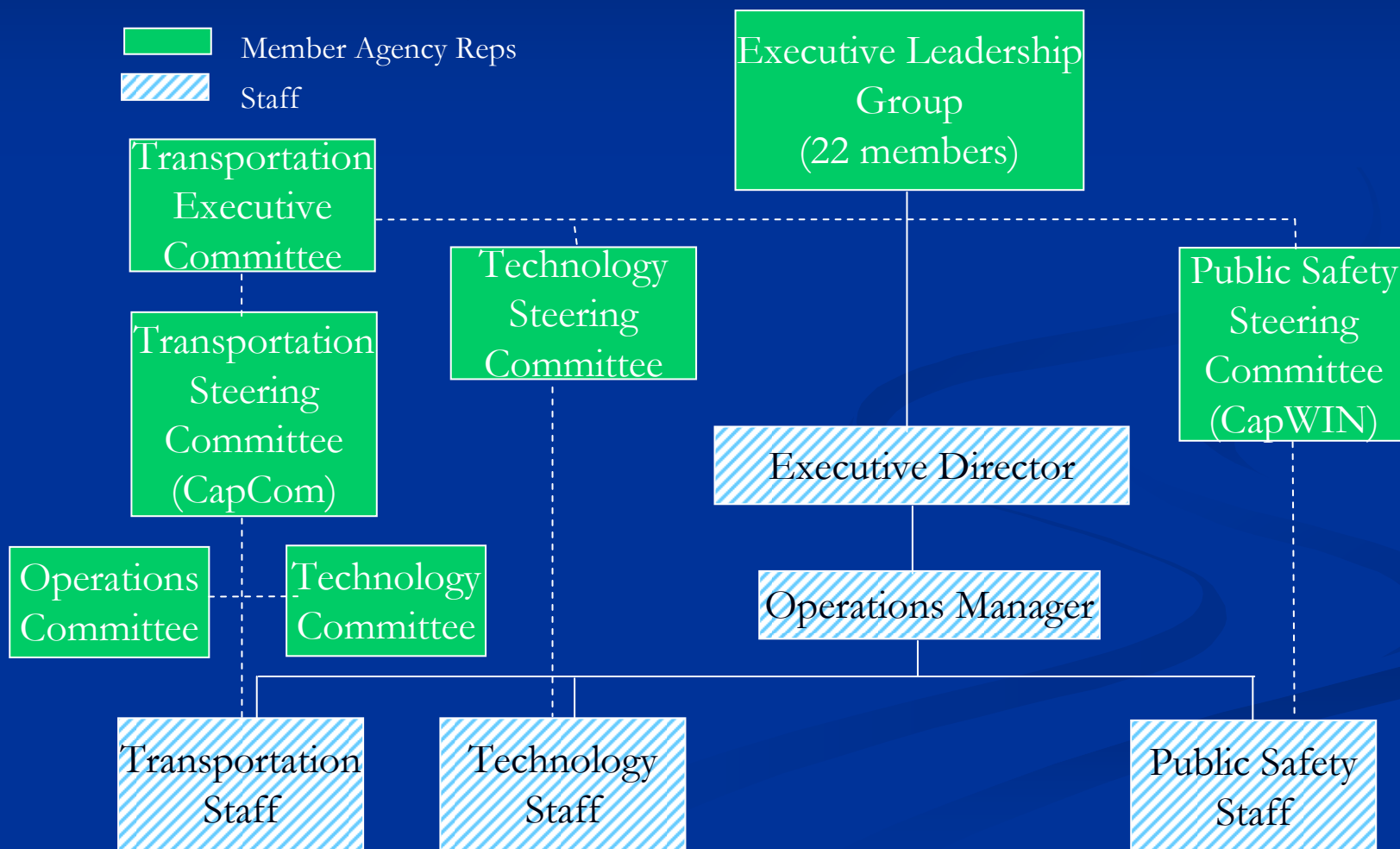
Background

- TPB, in November 2004 and January 2005, declared creation of a regional transportation coordination program as a top priority
 - Requested that the region's transportation agencies collaborate with the University of Maryland to prepare a proposed work program for an enhanced CapWIN organization to perform regional transportation coordination activities
 - Endorsed the concept of using the CapWIN Program and governance structure as the basis for a regional transportation coordination program

Rational for Leveraging CapWIN Program

- Institutional
 - Established Governance Structure – Executive Leadership Group
 - Includes Regional Transportation and Public Safety Leadership
 - Established Program Support Structure
 - Professional Staff (management, operations, technical)
 - Already supporting regional operations and technical coordination
 - Facility (network center, training center, 24/7 help desk, offices)
- Technical
 - Existing secure application designed for multi-agency/discipline/jurisdictional coordination and communication
 - Synergies with CATT-Lab Activities (e.g., RITIS)
 - In-house development staff

ELG Reorganized to Support CapCom: Mid-Atlantic Communications Interoperability Partnership



CapWIN / CapCom Closing Points

- Original CapWIN ELG was developed to serve as a regional transportation and public safety governance structure
 - MACIP ELG enhancements seek to strengthen transportation involvement - CapCom can take advantage of this
- CapCom UASI Grant request leveraged the CapWIN Program to facilitate CapCom Prototype Implementation
- Issues related to CapWIN are being addressed by the MACIP ELG
- More Info on CapWIN at: www.capwin.org