



A Letter to the Community from 8 Neighbors
October 2011

The Future We Need

On Sunday, September 6, 2008, Fannie Mae and Freddie Mac were both placed into conservatorship to ensure the financial soundness of these two companies. For over three years, our country has wondered about the consequences for the housing finance market - the principal reason both organizations were created by Congress.

In the National Capital Region, however, an immediate additional concern arose: how would this change impact the multiple human services programs that benefit so many throughout this region we call home?

Today, in the fall of 2011, we are just beginning to assess the looming impact of Freddie Mac winding down its local philanthropic investments and Fannie Mae adjusting the breadth of its local impact. The loss of the top two charitable giving organizations in the National Capital Region represents a blow to families and neighbors who depend on nonprofits for assistance for food, temporary housing, or job training. Our region is already balancing in a fragile funding environment and replacing these revenue sources will be difficult, certainly in the short-term.

The George Mason University's Center for Regional Analysis presents us with some sobering facts. We are being told that we should prepare for a future in which Fannie Mae and Freddie Mac are no longer the philanthropic giants upon which this region has come to rely. Understood. Diversified funding is always the goal to which all organizations strive. But, the future that we *need* includes the active philanthropic engagement of Freddie Mac and Fannie Mae, not just through the traditional financial role, but in the larger and more important role of visionary leader. And this role doesn't only benefit the needy in our region; it benefits us all, including Freddie Mac and Fannie Mae.

Philanthropy can often seem as a one-off strategy that demonstrates the social sensitivity of a corporation. It is even usually referred to as CSR or corporate social responsibility. To those of us in the community, we knew that philanthropy was always more than that for Freddie and Fannie. It was strategic. It was outcome-driven. It was a part of their core mission. For Freddie Mac and Fannie Mae, philanthropy went well beyond dollars.

The impact of Fannie Mae's *Help the Homeless Walkathon* cannot be measured solely in the dollars that it garnered for homeless programs around the region and across the country. The astute observer will look at the multiplier effect that it brought by partnering with local nonprofits, and the effective public policies that developed because the walk was held here in the political heart of our country, as well as the annual re-kindling of attention on the dire problem of homelessness among all who still believe that having a home is the hallmark of the American Dream.

Freddie Mac chose a different path. *Wednesday's Child*, a multi-media effort to showcase the need for adoptive families, was one of its signature efforts. *Wednesday's Child* didn't only generate homes for thousands of children hoping for a mom and dad, it became part of Freddie's corporate culture. Being a part of this signature program was a source of pride and engagement for hundreds, if not thousands, of employees. And our community, schools, and homes were made stronger because we know that a forever family is fundamental for lifelong success.

Fannie Mae and Freddie Mac are so much more than check book charitable givers. They are shining examples of what it means to be an effective, engaged and valued corporate citizen. We urge other companies to continue the philanthropic model Fannie Mae and Freddie Mac developed. Our neighbors need you in our region. And we need your leadership for our country.

8 Neighbors is a coalition of eight organizations representing the nonprofit, philanthropic, government and business sectors in the Greater Washington Region.





Center for Regional Analysis - George Mason University

Fannie Mae and Freddie Mac: What Does Their Future Mean for the Washington Region's Nonprofit Community?

Prepared for 8 Neighbors:

Center for Nonprofit Advancement

The Community Foundation for the National Capital Region

The Greater Washington Board of Trade

Leadership Greater Washington

Metropolitan Washington Council of Governments

The Nonprofit Roundtable of Greater Washington

United Way of the National Capital Area

Washington Regional Association of Grantmakers

By

Stephen S. Fuller, PhD, Director

John McClain, Senior Fellow

Center for Regional Analysis, School of Public Policy

George Mason University

October 2011

Executive Summary

- Fannie Mae and Freddie Mac have been extremely important contributors to the Washington region's non-profit community and have helped address many and varied needs throughout the regional community. Over just the past four years, the two entities have made contributions of almost \$100 million to 500 non-profit organizations working to meet needs in the metropolitan Washington region. Their contribution has not only been funding dollars, but they have made substantial contributions to the region's nonprofit infrastructure and leveraging with other resources to meet the region's needs. No other corporations gave more in philanthropy in 2010 than the Freddie Mac Foundation or Fannie Mae, even with the reduced amounts post-conservatorship.
- Fannie Mae and Freddie Mac have been central to providing financing for home mortgages in the U.S. and to the American dream of home ownership. Unfortunately the housing financial systems crisis of the past few years has resulted in proposals for significant changes to the system that will change the roles of both entities going forward. It would appear from the discussions through fall of 2011 that they will continue to exist and provide resources for home financing for a considerable period of time if not ongoing, but their attention and roles will be focused on that corporate role. In the case of the Freddie Mac Foundation, it was announced by their President and CEO in mid-September that the Foundation has been directed by its regulator to implement a 3-year wind down plan. The President's letter said that they will actively fund non-profit programs at higher spending levels through CY 2014, and in early 2015 would distribute any remaining Foundation assets. There is no announced wind-down of corporate philanthropy by Fannie Mae, but it is reasonable to assume that their support for nonprofits will decline as well.
- The region's nonprofits are generally aware of the situation with Fannie Mae and Freddie Mac and some are anticipating and planning for reduction of funding from them, and the funding challenges faced by different nonprofits varies. The size of the nonprofit, the proportion of funding coming from the two entities, the proportion of expenses supported by the funds, and the kind of programs the nonprofit is operating are and will be key factors in the impact.
- The giving by Fannie Mae and Freddie Mac over the past four-year period of 2007-2010 declined significantly with the onset of conservatorship in 2008, but is now declining very gradually. Both entities, however, are aligning their contributions with their business – housing. The Freddie Mac Foundation has announced its wind-down schedule and spending focus for the remainder of its

- assets. In the statement from Ralph Boyd, the Foundation will continue to invest in programs focused on vulnerable children and families, and that in spending the assets down have a “goal to help high performing nonprofits leverage our existing resources to sustain essential programs, services, and funding streams well into the future...” Fannie Mae’s spending focus since the initiation of conservatorship has also been focused on housing, and that trend will likely continue and accelerate as its corporate support of non-profits declines.

- While there are no exact comparable models elsewhere as all regions and situations are different, it is useful to draw on the case of the Detroit region, which experienced significant declines in corporate philanthropy this decade. The Washington region could expect some of what Detroit experienced: less funding for programs in areas like the arts with more focus on critical human needs, and a challenge to achieve a level of regional collaboration to set funding priorities to meet regional objectives rather than funder objectives.

- Given the analysis and findings of this research, it is recommended that the 8 Neighbors
 - Communicate with the region’s nonprofits (especially non-housing) to develop new business plans and whatever is needed to be able to continue operations and plan future programs assuming gradually less funding and support from the two entities.
 - Maintain close working relationships with Fannie Mae and the Freddie Mac Foundation in order to inform the region’s non-profits as the changes will continue to occur over the next few years, and in the case of the Freddie Mac Foundation, seek to collaborate with them to help set priorities and explore structural options for extending the life of their assets beyond its announced three-year wind down.
 - Consider using this research and its findings to initiate informed discussions of the region’s leadership directed to finding new corporate funding and to formulating new programs and initiatives to support sustainable, long-term funding of the regional community’s needs.

Purpose of Report

The purpose of this research is to examine the current situation of the philanthropic roles and contributions by Fannie Mae and Freddie Mac in the Washington metropolitan area, and how their roles and funding of the region's nonprofit community may change in the near future. The two corporations have been major contributors to and supporters of the community over the years. Potential changes to their functions and structure caused by the housing and financial crisis has already had effects on nonprofit funding levels in the region, and the research is to assess what may happen in the year(s) ahead regarding their support for regional nonprofits.

Fannie Mae-Freddie Mac History

Fannie Mae was founded in 1938 during the Great Depression as part of the New Deal, and was set up as a government-sponsored enterprise (GSE), and in 1968 was converted to a publicly traded company. Its purpose was to provide local banks with federal money to finance home mortgages in order to raise levels of home ownership and increase the availability of affordable housing. Freddie Mac was created in 1970 to expand the secondary market for mortgages and as an additional effort to increase the supply of money available for mortgage lending and therefore money available for home purchases.

Both entities have been very important in increasing the level of home ownership in the U.S. since their inception such that approximately 2/3 of households are homeowners. The two corporations plus the Federal Housing Administration (FHA) together now guarantee approximately ninety percent of new mortgages. Unfortunately, both corporations relaxed underwriting standards to compete with other segments of the private financing market with the run-up of the housing bubble in the mid-2000s. When housing prices started falling in 2006-2008, both corporations began losing money. By August 2008 shares of both corporations had dropped more than ninety percent from their value in 2007. In September of 2008 the corporations were taken over by the U.S. government in order to prevent further financial crisis, and the corporations were placed into conservatorship.

Fannie Mae-Freddie Mac: The Current Situation

Since going into conservatorship, the two entities have continued to carry out their mortgage underwriting role using money from the Federal government, and through the first quarter of 2011 the amount of Federal support is estimated at

\$135 billion. The outfall of this situation is that proposals have been put forward to change the role of government in the housing market. The Obama administration released a white paper in February of 2011, *Reforming America's Housing Finance Market*, that outlined three options for changing government's role. All three options would likely affect the future of Fannie Mae and Freddie Mac very significantly. House Republicans have put forward responses and other proposals. Given these developments, it is reasonable to assume that both entities may well cease to exist, certainly in their current forms and roles. As of fall 2011, however, it does seem likely given the continuing economic troubles and housing financing issues, that the two corporations will be in existence for a considerable period as the country tries to recover and to resolve the problems of the home finance industry.

The national stage on which all of this gets played out will be of great importance to the Washington region's non-profit community. Fannie and Freddie have been strong supporters and partners with many non-profits in the region in meeting the needs for education, human services, homelessness, health care, housing, community development and others. Given the depth of the crisis and the clear consensus that the two entities' roles will be greatly changed if not eliminated, it is reasonable to assume that over the next few years their contributions to the region's non-profits will recede and cease to exist.

The nature of giving from the two entities, however, is very different in how their local contributions could cease. Funding to regional non-profits from Freddie Mac is primarily from the Freddie Mac Foundation, which has separation from the corporation. The Foundation has significant assets and funding has been generated from the earnings on those assets. Funding declined after conservatorship, and in mid-September the Foundation was directed by its regulator (Federal Housing Finance Agency) to implement a three-year wind down plan beginning in 2012. The Foundation has indicated that its community investing would substantially exceed the CY 2010 levels through 2014, and then distribute any remaining assets in early 2015.

On the other hand, Fannie Mae eliminated its foundation several years ago, and since conservatorship has been providing funding in the form of traditional corporate giving. This giving has become much more aligned (than in pre-conservatorship) with its corporate mission of housing finance, and giving to non-housing needs has diminished significantly. But more importantly for the region's non-profits, what happens to change or eliminate Fannie Mae by the national forces at play would fairly immediately change giving to local non-profits. Also, given the directive from FHFA to the Freddie Mac Foundation, it is reasonable to assume that the regulator will also be directing changes to Fannie Mae's philanthropy spending in the very near future.

The Region's NonProfits in 2011

A sample of non-profit organizations that are recipients of funds from Fannie Mae and Freddie Mac were interviewed to assess how they might be impacted by changes in the giving patterns of the two entities. Some of the nonprofits interviewed have already experienced some reductions from one or both, others have continued to receive their historical level of funding but are aware and sensitive to the possibilities of significant changes and reductions. Common themes and significant points from the interviews:

- A common theme was a recognition that the outlook is generally that funding from the two entities will likely lessen significantly if not go away entirely. Some of those responding with this view indicated that they were revising their business plans and otherwise making preparations for dealing with the situation.
- A few had begun identifying potential replacement sources and/or how they would reduce the cost of operations in order to continue their programs without current funding from Fannie or Freddie. One suggestion was that a program is needed in the region to encourage citizens and corporations to take more responsibility for social needs, perhaps some kind of regional awareness effort to encourage more giving period.
- There was a clear worry expressed about some programs – notably those for children, foster care, and families. This sentiment recognized that the situation with both organizations at the national level would likely mean that both organizations would be pressured to allocate available funds to the housing areas and away from anything that was not housing.
- Another worry expressed was that operational capacity would be at risk going forward, especially for those getting a significant portion of their funding from either of the entities. It was noted that some organizations might not appear to be severely threatened as they may only get 5 percent of funding from one of the two, but that 5 percent of total funding might mean 25 percent of non-restrictive funding and such loss would be severe. A suggestion from one interviewee was that an option for some nonprofits would be to consolidate some programs.
- Some wondered if the major funding cuts have already happened, and if there will be fewer/less likely reductions in the future. A majority did not give this view, but is a somewhat troubling sentiment given the potential for significant reductions.

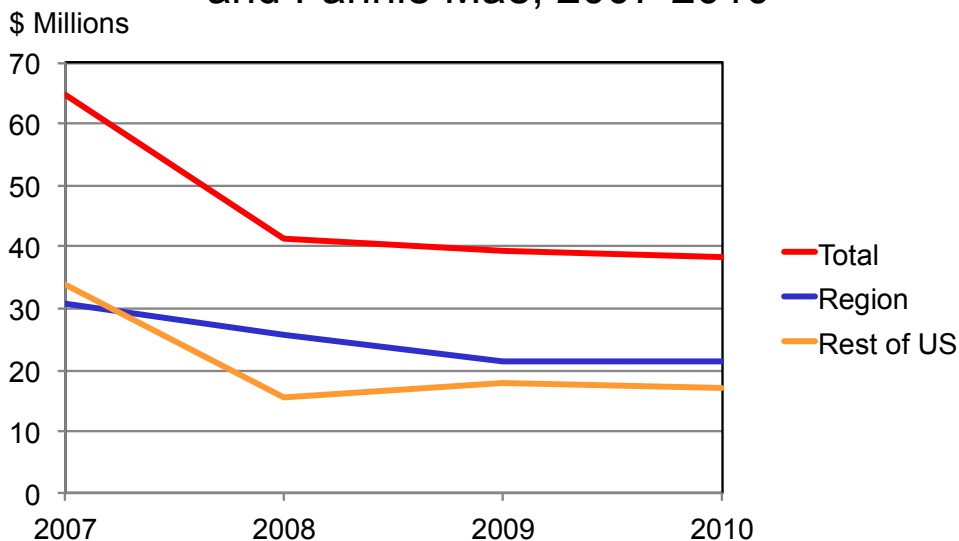
Trends in Giving, 2007 – 2010

The combined contributions of Fannie Mae and Freddie Mac to the greater Washington community have been substantial and very important to meeting many of the needs of the non-profit services community. For the four-year period of 2007-2010, the two companies contributed \$99.3 million to over 500 non-profit organizations in the region. The impact of the two companies going into conservatorship has clearly affected the philanthropic contributions of both organizations. In 2007 the combined contributions of Fannie Mae and the Freddie Mac Foundation were \$64.7 million nationally. Contributions declined to \$41.3 million in 2008 with the advent of conservatorship and contributions further declined but more modestly the past two years, and 2010 total contributions were \$38.3 million, a four-year decline nationally of 40.8 percent.

Data for each year for the period 2007-2010 were analyzed to provide a picture of changes in giving patterns for a year and a half before conservatorship and then two and a half years afterwards.

The drop in contributions was not as severe for the Washington area recipient organizations, as total contributions from both companies was \$30.8 million in 2007 and \$21.3 million in 2010, a decline of 30.8% compared to the national decline of 40.8 percent. The share that Washington organizations received from the two companies increased from 47.5 percent in 2007 to 55.6 percent in 2010, indicating that a higher priority was placed on the local community as each of the organizations were reducing contributions.

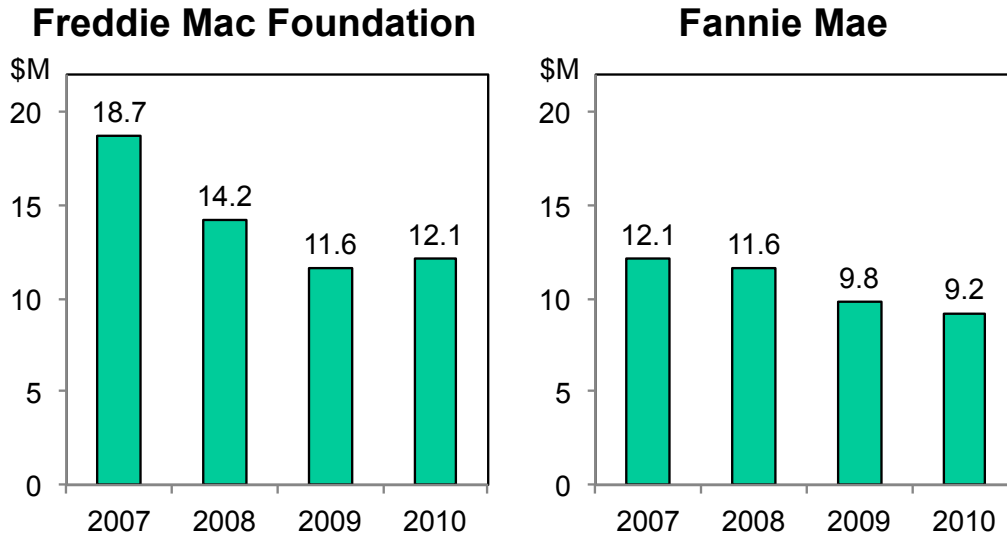
Figure 1
Total Contributions by Freddie Mac Foundation
and Fannie Mae, 2007-2010



For contributions to regional organizations, Freddie Mac’s contributions dropped the largest amount from 2007-2008, and then more gradually since 2008 and 2010 contributions were slightly higher than 2009. Contributions in 2010 were 35.3 percent less than in 2007. The increase in Freddie Mac Foundation contributions from 2009-10 reflect better equity market conditions and therefore better earnings for the Foundation’s assets. Overall, Freddie Mac’s contribution patterns have been primarily focused on the Washington region since its inception, and the share of total contributions going to Washington organizations was 89.9 percent in 2007 and increased to 97.6 percent in 2010.

Fannie Mae’s contributions to local organizations did not have a sharp decline over the analysis period, as 2007 contributions were \$12.1 million and have declined each succeeding year and in 2010 were \$9.2 million. That represents a decline of 24.0 percent, much lower than the decline in contributions to the rest of the U.S. of 47.5 percent, and also a smaller decline in dollar contributions as well as percentage than the Freddie Mac Foundation contribution declines.

Figure 2
2007-2010 Contributions to
Washington Area Organizations



For the year 2010, compared to other corporate philanthropy in the Washington region as compiled and reported by the Washington Business Journal, no other corporations gave more in philanthropy in 2010 than the Freddie Mac Foundation or Fannie Mae, even with its reduced amounts post-conservatorship. Comparing the local giving per local employee for corporations, Fannie Mae and Freddie Mac were both in the top ten in corporate philanthropy of the fifty top local corporate givers in 2010.

Trends in Contributions by Type

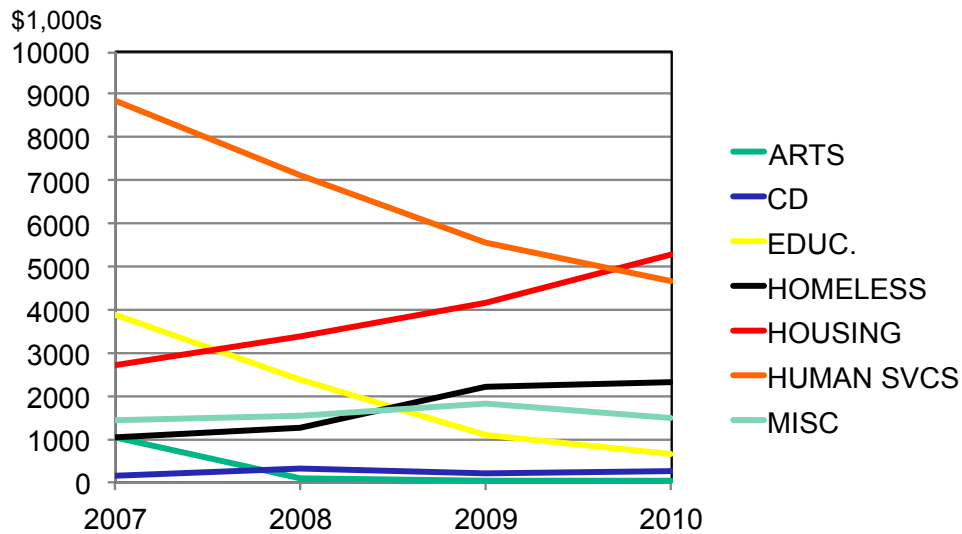
Contributions to the top 200 recipient organizations were grouped into general categories to further analyze changes in contribution trends of the two organizations. There are no standard definitions of categories, and many non-profit organizations have diverse programs, so the analysis of trends by category recognizes that conclusions are fairly general.

Contributions by the two organizations were grouped into the following categories:

- Arts
- Community Development
- Education
- Homelessness
- Housing
- Human Services
- Miscellaneous (all other)

Given in Table 1 is a summary of contributions by Fannie Mae and the Freddie Mac Foundation for each year 2007-2010, and Figure 3 summarizes contributions (combined) by category for each of the years.

Figure 3
Trends In Contributions By Category, 2007-2010
Freddie Mac Foundation and Fannie Mae
To Washington Area Organizations



Top 200 Recipient Organizations

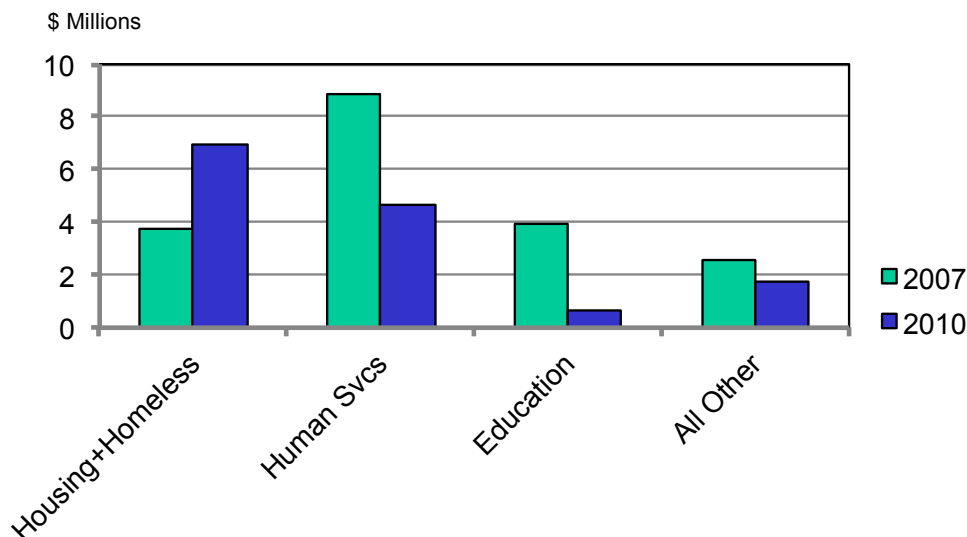
**Table 1
Top 200 Washington Area Recipients - Contributions by Category (\$1000s)**

	Freddie Mac Foundation				Total
	2007	2008	2009	2010	
Arts-	-	-	-	-	-
Community Development	140	140	40	140	460
Education	2,602	1,904	596	696	5,798
Homelessness	981	1,149	1,875	1,941	5,946
Housing	1,267	1,095	1,600	2,140	6,102
Human Services	8,137	6,108	4,519	4,028	22,792
Misc.	1,015	360	235	352	1,962
Total	14,142	10,756	8,865	9,297	43,060

	Fannie Mae				Total
	2007	2008	2009	2010	
Arts	835	50	25	-	910
Community Development	5	200	190	100	495
Education	1,536	521	526	-	2,583
Homelessness	51	103	353	375	882
Housing	1,435	2,301	2,562	3,145	9,443
Human Services	695	3,507	1,070	625	5,897
Misc.	4,212	1,170	1,615	1,152	8,149
Total	8,769	7,852	6,341	5,397	28,359

	Total Freddie Mac Foundation and Fannie Mae				Total
	2007	2008	2009	2010	
Arts	835	50	25	-	910
Community Development	145	340	230	240	955
Education	4,138	2,425	1,122	696	8,029
Homelessness	1,032	1,252	2,228	2,316	6,828
Housing	2,702	3,396	4,162	5,285	15,545
Human Services	8,832	9,615	5,589	4,653	28,689
Misc.	5,227	1,530	1,850	1,504	10,111
Total	22,911	18,608	15,206	14,694	71,419

Figure 4
 Aggregate Categories
 Freddie Mac Foundation and Fannie Mae
 Contributions to Washington Area Organizations



Contributions have declined for the arts, community development, education, and human services. They have increased for housing as well as homelessness (which is one area of housing). This is an indication that both organizations are aligning their contributions with their business, which is housing.

Collapsing the seven categories into four shows this conclusion even more clearly in Figure 4 comparing 2007 (pre-conservatorship) with 2010 (post-conservatorship). Comparing 2007 and 2010, the share of contributions in the Housing and Homeless categories from Freddie Mac increased from 15.9% in 2007 to 43.9%, and for Fannie Mae increased from 16.9% to 65.2%. The difference between the two reflects that contributions from Fannie Mae are corporate while those from Freddie Mac are from its foundation, which has the ability to transition more gradually.

Human services and education programs have incurred the most significant declines, and the trends from 2007-2010 plus the likely internal corporate pressure and external political pressures will mean that future giving will continue in this direction; i.e., a greater share of contributions to what is their business – housing related programs – and fewer funds going to all other programs.

Overview of Potential “At Risk” Recipients

To examine if there are organizations that rely heavily on the Freddie Mac Foundation or Fannie Mae of both for their programs, data from each organization’s 990 return was reviewed for the top 100 Washington area recipients for the year 2008 (most recent year with complete data). Two sorts and tabulations were made: one of the share of total contributions were from Fannie Mae and Freddie Mac contributions, and the other of the proportion of total Contributions from Freddie Mac and Fannie Mae was of their 2008 expenses. A summary is shown in Table 2.

Freddie Mac Foundation and Fannie Mae Contributions as Share of Total Contributions		Freddie Mac Foundation and Fannie Mae Contributions as Share of Total Expenses	
	Number of Recipients		Number of Recipients
More than 10%	9	More than 10%	5
4.0% to 9.9%	7	4.0% to 9.9%	7
1.0% to 3.9%	13	1.0% to 3.9%	14
Less than 1.0%	71	Less than 1.0%	74

This suggests that there are several organizations that will need to find other funds to replace potentially at-risk Fannie/Freddie funds, but also shows that the region’s organizations are not totally dependent on the FM2 funds for their programs. It certainly means a lot to them, but most of funding is from a diverse portfolio.

The Detroit Experience

Research was conducted to see if there are other models in the U.S that might provide some intelligence about the challenges being faced. While there appeared to be no exact analogies, the experiences of the Detroit region offer some insight to the current situation. We interviewed Doug Rothwell, President and CEO, Business Leaders for Michigan. The organization is statewide, but focused on the greater Detroit area. Rothwell indicated that the Detroit non-profit community faced similar challenges over the past few years with the economic decline that was particularly acute in that region and especially affected their large corporations and philanthropy. He indicated that this happened fairly abruptly and without any strategy or preparation.

Some key quotes:

“Detroit has gone through SUBSTANTIAL downsizing of corporate philanthropy and will never be back where we were a decade ago. I think the same is true nationally. Corporations cut back to a level of giving that can be sustained and will not beg difficult questions from shareholders or regulators... funding for critical human services and, to a lesser degree, education, became the top priorities. Funding for the arts, culture and events took the biggest hits.

General-purpose organizations, like chambers, took bigger hits than special purpose ones that address human services and education needs. We have seen a greater interest in regional collaboration than we have in the past, but I have not seen any coordinated effort by the community writ large or the corporate community in particular to sit at a table and develop a shared set of giving priorities. I don't think it works that way in most places, as each “funder” wants to be able to give in a way that reflects their own priorities and needs. My sense is that the community would be better off trying to identify its priorities for the funders, but I think they'd have the same problem trying to prioritize

When asked about creating efforts or a regional group to meet the challenge of cuts in corporate philanthropy, Rothwell replied, *“We “did” have such a group in metro Detroit called OneD. But it fell apart after several years largely because the groups were willing to collaborate, but not cede their ability to unilaterally set priorities...The funders of these organizations want them to “work together” and avoid duplication, but are unwilling to set unified priorities if that means saying one group or issue is more important than another!”*

Conclusions

Fannie Mae and Freddie Mac have been important and major resources for supporting the missions of many nonprofit organizations in the Washington region for many years. The national financial and housing market crisis of the past few years resulted in the two organizations being placed in conservatorship. This led to declines in philanthropic giving since 2007, and while the declines have been more gradual since conservatorship occurred in 2008, it is reasonable to assume given the dynamics of the situation at the national level, that their philanthropic giving will further decline. And in the case of the Freddie Mac Foundation, the wind down plan has been announced and that it will expend all of its assets by early 2015.

The giving patterns of the two organizations have adjusted to place more priority on programs related to housing, and these trends will continue as both organizations' philanthropy diminishes in total. Nonprofits in the region are generally aware of the threat to some of their funding. Some have begun developing alternative plans and others know of the threat but are just beginning to plan for adjustments. In seeking other potential models elsewhere that may provide guidance; there were no exact models. Detroit has experienced declines in general corporate philanthropy, and efforts to prioritize reductions were difficult to organize.

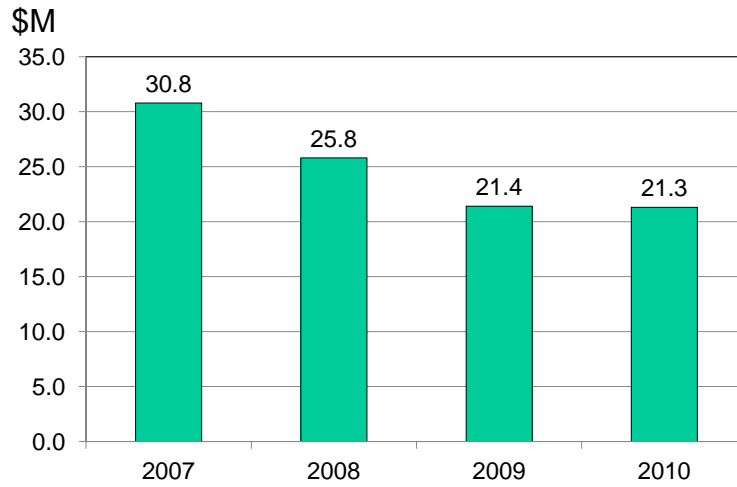
Given the announced wind down plan by the Freddie Mac Foundation directed by its regulator the Federal Home Finance Agency, it is now known that the Foundation's assets will be distributed by early 2015. FHFA's directive to the Foundation likely means that Fannie Mae will also receive directives to curb if not eliminate its non-profit funding as well. Organizations should develop plans for replacing this funding and reducing expenses or combining programs.

The decline and likely end of philanthropic giving by Fannie Mae and Freddie Mac – the two largest corporate givers in the region – provide opportunities, and a real need for other corporations in the region to step up and fill the funding gaps that will soon be faced by the region's nonprofit community. While this research has focused on Fannie and Freddie and the nonprofits they support, the real impact will be measured in human costs: fewer homes for foster care kids, fewer beds for the homeless, and the many other bottom-line human needs that are being served.

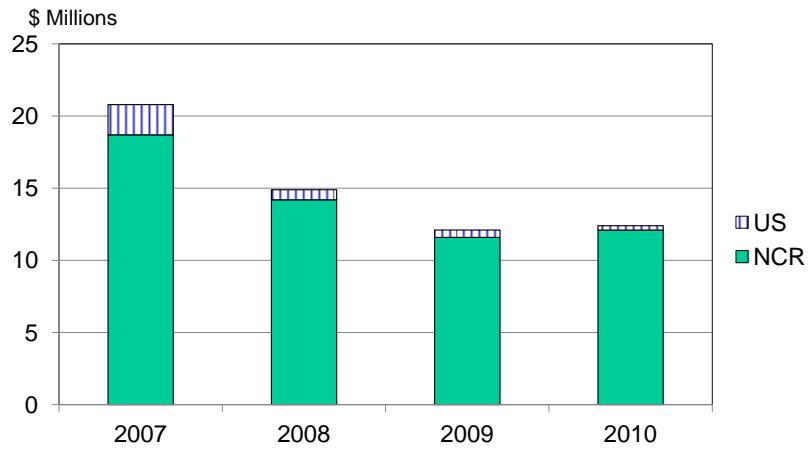
APPENDIX 1

Additional Giving Trends Charts

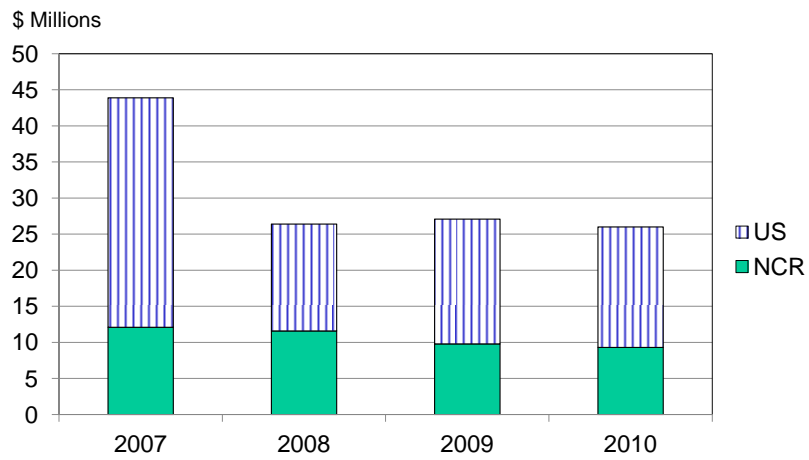
2007-2010 Contributions to Washington Organizations By Freddie and Fannie



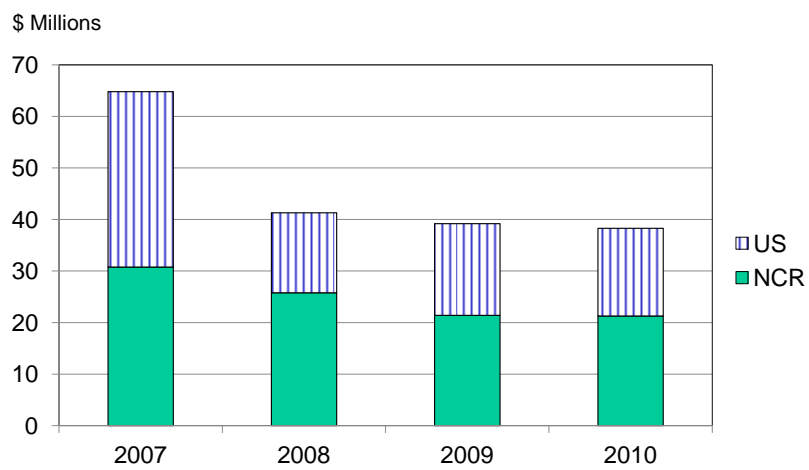
Freddie Mac Foundation Contributions



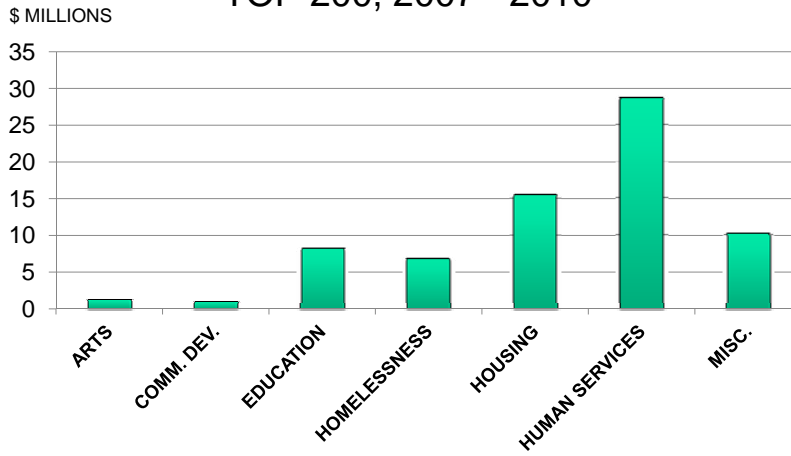
Fannie Mae



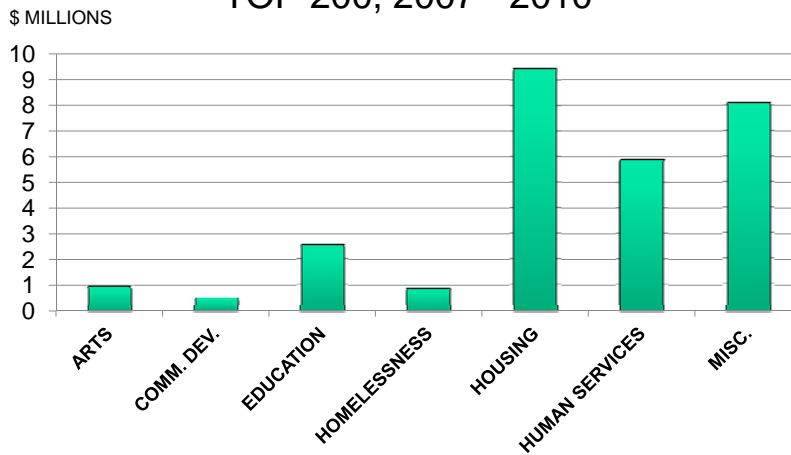
Total Contributions Both GSEs

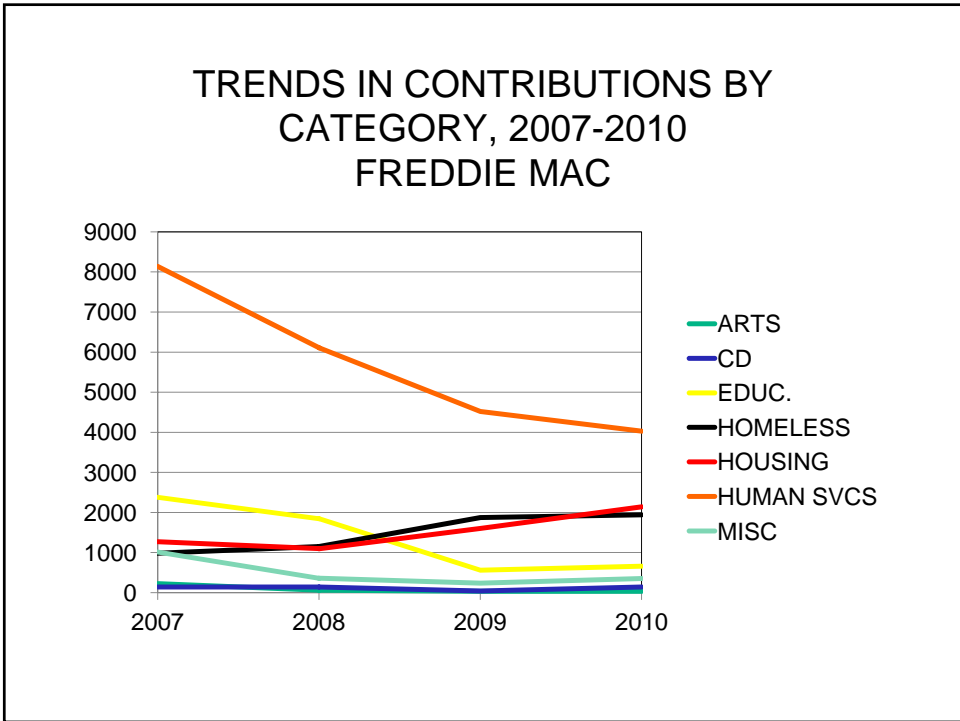
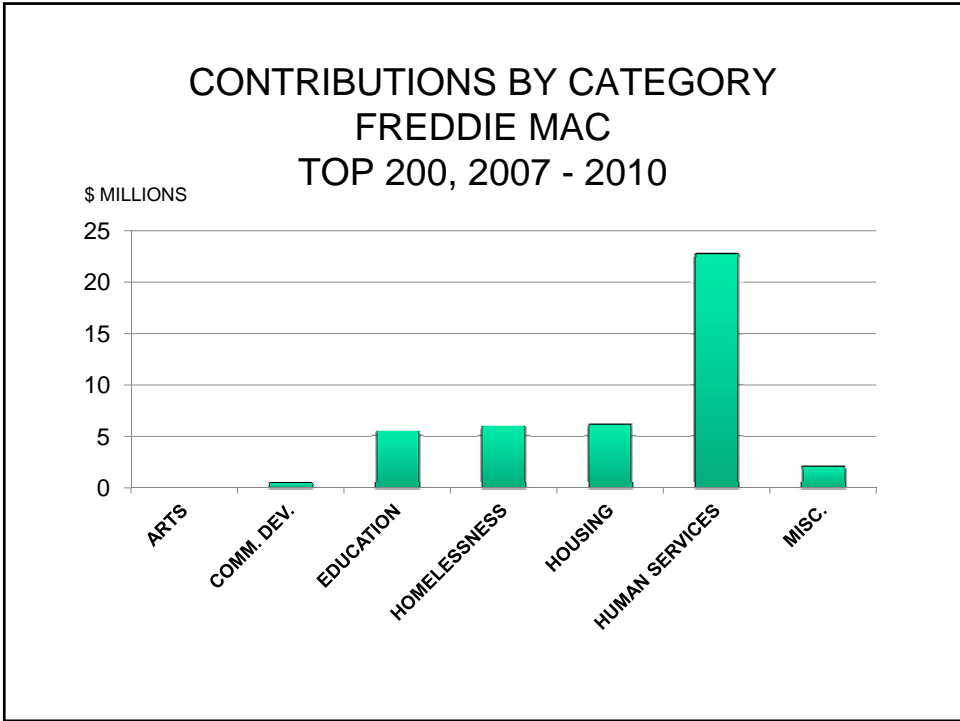


CONTRIBUTIONS BY CATEGORY FANNIE MAE AND FREDDIE MAC TOP 200, 2007 - 2010

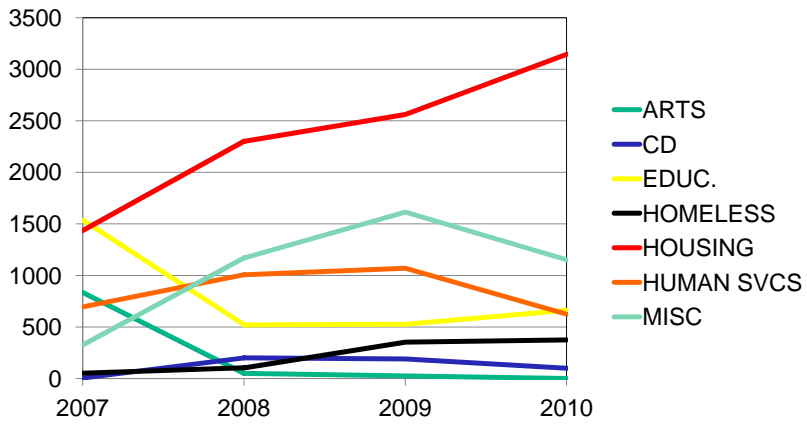


CONTRIBUTIONS BY CATEGORY FANNIE MAE TOP 200, 2007 - 2010





TRENDS IN CONTRIBUTIONS BY CATEGORY, 2007-2010 FANNIE MAE



APPENDIX 2
Recipient Alpha List

Non-Profit Organizations	2007-2010 Funding		
	Freddie Mac Foundation	Fannie Mae	Total
100 Black Men of Greater Washington DC Inc	\$0	\$500	\$500
Action in the Community Through Service	\$95,000		\$95,000
Adoption Exchange Association	\$2,000		\$2,000
Adoptions Together, Inc.	\$800,127		\$800,127
Advocates for Children and Youth	\$383,670		\$383,670
Advocates for Homeless Families, Inc.	\$45,000		\$45,000
Affordable Housing Conference of Montgomery County	\$0	\$105,000	\$105,000
African American Adoptions, Inc.	\$50,000		\$50,000
African American Nonprofit Network	\$75,000		\$75,000
AHC Inc.	\$650,000		\$650,000
Alexandria Neighborhood Health Services, inc.	\$52,500		\$52,500
Alexandria Seaport Foundation	\$160,000	\$5,000	\$165,000
Alliance For Housing Solutions	\$0	\$2,500	\$2,500
Alternative House: Abused and Homeless Children's Refuge	\$85,000		\$85,000
Alvin Ailey Dance Foundation Inc	\$0	\$15,000	\$15,000
Alzheimer's Disease and Related Disorders Association - National Capital Area	\$0	\$5,000	\$5,000
American Lung Association of the District of Columbia	\$0	\$10,000	\$10,000
American Red Cross	\$5,000	\$10,000	\$15,000
American Red Cross - Prince William	\$5,000		\$5,000
Archdiocese of Washington Chancery	\$0	\$430,000	\$430,000
Arlington Home Ownership Made Easier	\$0	\$145,000	\$145,000
Arlington Partnership for Affordable Housing	\$50,000		\$50,000
Arlington-Alexandria Coalition for the Homeless	\$30,000		\$30,000
Arthritis Foundation - Metropolitan Washington Chapter	\$0	\$1,500	\$1,500
Asian American LEAD	\$142,500		\$142,500
Asian Pacific American Legal Resource Center	\$30,000		\$30,000
Aunt Hattie's Place, Inc.	\$10,000		\$10,000
Autism Speaks	\$0	\$35,000	\$35,000
Avalon Theatre Porject Inc	\$0	\$1,000	\$1,000
Ayuda	\$72,500		\$72,500
Beacon House Community Ministry, Inc.	\$120,000		\$120,000
BEST Kids, Inc.	\$25,000		\$25,000
Bethany House of Northern Virginia, Inc.	\$125,000		\$125,000
Bethel House Inc.	\$0	\$50,000	\$50,000
Bethesda Cultural Alliance Sorelle Group	\$0	\$5,000	\$5,000
Black Student Fund	\$95,000	\$55,000	\$150,000
Boat People SOS, Inc	\$70,000		\$70,000
Booker T Washington Public Charter School	\$0	\$10,000	\$10,000
Boys and Girls Clubs of Greater Washington	\$2,110,000	\$250,000	\$2,360,000
Boys Town Washington, DC Inc.	\$0	\$25,000	\$25,000
Brain Tumor Society	\$0	\$500	\$500
Bread for the City, Inc.	\$30,000		\$30,000
Bright Beginnings, Inc.	\$826,000		\$826,000
BU-GATA	\$145,000		\$145,000
Building Bridges Across the River	\$0	\$1,025,000	\$1,025,000
Business Civic Leadership Center	\$0	\$15,000	\$15,000
Capital Hill Group Ministry, Inc.	\$20,000		\$20,000

Non-Profit Organizations	2007-2010 Funding		
	Freddie Mac Foundation	Fannie Mae	Total
Capital Partners for Education	\$125,000		\$125,000
Capital Pride	\$0	\$5,000	\$5,000
Capital Rowing Club	\$0	\$2,500	\$2,500
Carnegie Institute of Washington	\$0	\$170,000	\$170,000
Carpenter's Shelter	\$705,000		\$705,000
CASA for the Children of the District of Columbia	\$125,000		\$125,000
CASA of Greater Prince William	\$80,000		\$80,000
CASA of Montgomery County, MD	\$65,000		\$65,000
Casey Journalism Center on Children and Families	\$25,000		\$25,000
Catalogue for Philanthropy Inc Greater Washington	\$3,000	\$5,000	\$8,000
Catholic Charities Foundation	\$0	\$100,000	\$100,000
Catholic Charities of the Archdiocese of Washington	\$5,000	\$300,000	\$305,000
Catholic Charities of the Dioces of Arlington, Inc.	\$110,000		\$110,000
Center City Public Chapter Schools, Inc.	\$200,000		\$200,000
Center for Adoption Support and Education, Inc.	\$654,000		\$654,000
Center for Alexandria's Children	\$65,000		\$65,000
Center For Inspired Teaching	\$0	\$100,000	\$100,000
Center on Budget and Policy Priorities	\$40,000		\$40,000
CentroNia	\$770,000	\$2,000	\$772,000
Cesar Chavez Public Charter Schools for Public Policy	\$207,000		\$207,000
CharityWorks	\$125,000		\$125,000
Child Trends, Inc.	\$50,000		\$50,000
Child Welfare League of America	\$130,000		\$130,000
Childhelp, Inc.	\$75,000		\$75,000
Children's Charities Foundation, Inc	\$10,000		\$10,000
Children's Defense Fund	\$751,000		\$751,000
Children's Defense Fund Action Council	\$0	\$50,000	\$50,000
Children's Hospital Foundation	\$302,500	\$5,000	\$307,500
Children's Law Center	\$345,000	\$5,000	\$350,000
Children's National Medical Center	\$0	\$10,000	\$10,000
Choral Arts Society of Washington	\$0	\$50,000	\$50,000
Christmas in April - Calvert County	\$10,000	\$6,000	\$16,000
Christmas in April - Charles County	\$0	\$4,000	\$4,000
Christmas in April - Prince George's County	\$0	\$50,000	\$50,000
Christmas in April - St. Mary's County	\$0	\$8,000	\$8,000
City First Enterprises	\$0	\$1,150,000	\$1,150,000
Coalition For Nonprofit Housing and Economic Development	\$105,000	\$460,000	\$565,000
Coalition for the Homeless Inc.	\$50,000	\$25,000	\$75,000
Coalition Homes, Inc.	\$50,000		\$50,000
Coalition of Adoption Programs, Inc.	\$9,000		\$9,000
College Bound, Inc.	\$145,000		\$145,000
College Summit, Inc.	\$180,000		\$180,000
Collegiate Directions, Inc.	\$20,000		\$20,000
Columbia Child and Family Services Agency	\$20,000		\$20,000
Columbia Lighthouse for the Blind	\$2,500		\$2,500
Common Ground Community Housing Development Fund Corporation	\$0	\$175,000	\$175,000
Community and Recreation Services	\$1,000		\$1,000

Non-Profit Organizations	2007-2010 Funding		
	Freddie Mac Foundation	Fannie Mae	Total
Community Bridges	\$137,500		\$137,500
Community Builders	\$0	\$350,000	\$350,000
Community Council for the Homeless at Friendship Place	\$0	\$100,000	\$100,000
Community Family Life Services Inc.	\$150,000	\$500	\$150,500
Community Foundation For the National Capital Region	\$122,500	\$7,762,457	\$7,884,957
Community Foundation Prince George's	\$0	\$5,000	\$5,000
Community Lodgings, Inc.	\$195,000		\$195,000
Community of Hope	\$1,375,000	\$175,000	\$1,550,000
Community Preservation and Development Corporation	\$260,000	\$400,000	\$660,000
Community Vision Inc	\$0	\$5,000	\$5,000
Congressional Black Caucus Foundation Inc.	\$9,000		\$9,000
Congressional Coalition on Adoption Institute	\$620,000		\$620,000
Cornerstone Inc.	\$0	\$375,000	\$375,000
Corporation for Enterprise Development	\$100,000		\$100,000
Corporation For Supportive Housing	\$0	\$300,000	\$300,000
Council for Court Excellence	\$0	\$5,000	\$5,000
Court Appointed Special Advocate (CASA)/Prince George's County, Inc	\$80,000		\$80,000
Covenant House Washington DC	\$600,000	\$501,000	\$1,101,000
Crossway Community	\$210,000		\$210,000
Cystic Fibrosis Foundation	\$0	\$1,750	\$1,750
Dance Institute of Washington, Inc.	\$10,000		\$10,000
DanceMakers, Inc.	\$40,000		\$40,000
DC Action for Children	\$275,000		\$275,000
DC Black Church Initiative	\$0	\$25,000	\$25,000
DC Central Kitchen, Inc.	\$25,000		\$25,000
DC Chamber of Commerce	\$0	\$150,000	\$150,000
DC Chamber of Commerce Foundaiton	\$0	\$25,000	\$25,000
DC Child and Family Services Agency	\$209,000		\$209,000
DC Children & Youth Investment Trust Corporation	\$35,000	\$1,057,000	\$1,092,000
DC Children's Advocacy Center	\$132,500		\$132,500
DC College Access Program	\$25,000	\$250,000	\$275,000
DC College Success Foundation	\$0	\$45,000	\$45,000
DC Education Compact	\$0	\$94,000	\$94,000
DC High School Basketball Clasic	\$0	\$2,500	\$2,500
DC Jewish Community Center	\$0	\$10,000	\$10,000
DC Learns	\$0	\$46,265	\$46,265
DC Metro, National Association of Social Worker	\$5,000		\$5,000
DC Preparatory Academy	\$0	\$15,000	\$15,000
DC Scores	\$45,000		\$45,000
DC Voice	\$0	\$1,500	\$1,500
Delta Research & Education Foundation	\$0	\$3,000	\$3,000
Delta Sigma Theta Sorority Foundation	\$0	\$1,000	\$1,000
District Alliance for Safe Housing, Inc.	\$140,000		\$140,000
District of Columbia Bar Pro Bono Program	\$0	\$2,500	\$2,500
District of Columbia Chamber of Commerce	\$0	\$117,600	\$117,600
District of Columbia Chamber of Commerce Foundation	\$0	\$25,000	\$25,000
District of Columbia College Access Program	\$0	\$125,000	\$125,000

Non-Profit Organizations	2007-2010 Funding		
	Freddie Mac Foundation	Fannie Mae	Total
District of Columbia Education Compact	\$0	\$1,730,540	\$1,730,540
District of Columbia Sports and Entertainment Commission	\$0	\$3,907,000	\$3,907,000
Doorways for Women and Families	\$1,210,000		\$1,210,000
Down Syndrome Association of Northern Virginia	\$0	\$1,000	\$1,000
Dress For Success	\$0	\$1,000	\$1,000
Dwelling Place, Inc.	\$50,000		\$50,000
E.L. Haynes Public Chapter School	\$25,000		\$25,000
East of the River Clergy policy Community Partnership	\$20,000		\$20,000
East of the River Community Development Corporation	\$0	\$250,000	\$250,000
Easter Seals Greater Washington-Baltimore Region, Inc.	\$130,000		\$130,000
Ellington Fund	\$0	\$2,500	\$2,500
End Time Harvest Ministries, Inc.	\$80,000		\$80,000
Enterprise Community Partners Inc	\$1,055,000	\$575,000	\$1,630,000
Eritrean Development Foundation	\$0	\$2,500	\$2,500
Euphemia L. Haynes Public Chapter School, Inc.	\$95,000		\$95,000
Excel Institute	\$45,000		\$45,000
Ezra Nehemiah Solomon, Inc.	\$37,500		\$37,500
FACES OF Virginia Families: Foster, Adoption, and Kinship Association	\$80,000		\$80,000
FACETS	\$100,000		\$100,000
Fairfax Area Community Emergency and Transitional Services, Inc.	\$250,000		\$250,000
Fairfax County Department of Community and Recreation Services	\$40,000		\$40,000
Fairfax County Government	\$100,000		\$100,000
Fairfax County Park Foundation	\$20,000		\$20,000
Fairfax Court Appointed Special Advocates, Inc.	\$210,000		\$210,000
Fairfax Futures	\$250,000		\$250,000
Falls Church - McLean Children's Center	\$93,000		\$93,000
Family Services Agency, Inc.	\$275,000		\$275,000
Federal City Performing Arts Association Inc	\$0	\$15,000	\$15,000
Fenty 2006 Mayoral Inaugural Committee	\$0	\$25,000	\$25,000
Festival DC, LTD	\$0	\$10,000	\$10,000
Fight for Children	\$122,500	\$75,000	\$197,500
Fihankra Akoma Ntoaso	\$55,000		\$55,000
Financial Literacy Education Foundation	\$0	\$175,000	\$175,000
Fishing School Inc.	\$0	\$1,500	\$1,500
Flicker of Hope Foundation	\$5,000		\$5,000
Food & Friends	\$0	\$50,000	\$50,000
For Love of Children	\$80,000		\$80,000
For Regional Collaboration Inc	\$5,000		\$5,000
Foster and Adoptive Parent Advocacy Center	\$375,500		\$375,500
Foster Care Children of America, Inc.	\$40,000		\$40,000
Foundation Center	\$10,000	\$5,000	\$15,000
Foundation/F/B/O/Medical Care for Children Partnership	\$1,600		\$1,600
Four Walls Development Inc	\$0	\$175,000	\$175,000
Fractured Atlas Productions Inc (DC Asian Pacific American FilmFestiva)	\$0	\$1,000	\$1,000
Frederick Alliance for Youth	\$25,000		\$25,000
Friends of Guest House, Inc.	\$50,000		\$50,000
George Mason University Foundation, Inc	\$55,000	\$2,500	\$57,500

Non-Profit Organizations	2007-2010 Funding		
	Freddie Mac Foundation	Fannie Mae	Total
George Washington University	\$60,000		\$60,000
Girl Scout Council of the National Capital Area	\$85,000	\$80,000	\$165,000
Girls Incorporated of the Washington DC Metropolitan Area	\$75,000	\$100,000	\$175,000
Good Shepherd Alliance, Inc.	\$25,000		\$25,000
Good Shepherd Corp.	\$10,000		\$10,000
Good Shepherd Housing and Family Services Inc.	\$360,000	\$50,000	\$410,000
Goodwill of Greater Washington	\$0	\$28,500	\$28,500
Government of the District of Columbia Child and Family Services Agency	\$115,000		\$115,000
Great Dads	\$10,000		\$10,000
Greater DC Cares	\$0	\$444,500	\$444,500
Greater Washington Board of Trade	\$0	\$47,500	\$47,500
Greater Washington Hispanic Chamber of Commerce Foundation	\$0	\$24,000	\$24,000
Greater Washington Urban League	\$0	\$300,000	\$300,000
Greenbrier Learning Center	\$30,000		\$30,000
H Street Community Development Corporation	\$0	\$150,000	\$150,000
Habitat for Humanity - Frederick County, MD	\$0	\$30,000	\$30,000
Habitat for Humanity - Montgomery County, MD	\$0	\$120,000	\$120,000
Habitat for Humanity - Northern VA	\$0	\$50,000	\$50,000
Habitat For Humanity DC	\$0	\$190,000	\$190,000
Habitat For Humanity Inc	\$0	\$5,000	\$5,000
Hands on DC	\$0	\$500	\$500
Hannah House, Inc.	\$15,000		\$15,000
Heads Up: A University Neighborhood Initiative	\$100,000		\$100,000
Healthy Babies Project, Inc.	\$45,000		\$45,000
Healthy Teen Network	\$200,000		\$200,000
Heartly House, inc.	\$500,000		\$500,000
Higher Achievement Program	\$1,280,000	\$5,000	\$1,285,000
Hispanic College Fund	\$5,000	\$15,000	\$20,000
Hispanic Committee of Virginia	\$45,000		\$45,000
Hispanics in Philanthropy	\$0	\$50,000	\$50,000
Holy Trinity School - Georgetown	\$7,500	\$5,000	\$12,500
Home Builders care Foundation	\$25,000		\$25,000
HomeAid Northern Virginia	\$60,000		\$60,000
Homefree USA	\$0	\$400,000	\$400,000
Homestretch	\$425,000	\$12,500	\$437,500
Hoop Dreams Scholarship Fund	\$280,000	\$5,000	\$285,000
Hope and a Home, Inc.	\$400,000		\$400,000
Hopkins House - A Center for Children and Families	\$5,000		\$5,000
Horton's Kids Inc	\$175,000		\$175,000
House of Ruth	\$400,000		\$400,000
Housing and Community Services of Northern Virginia, Inc.	\$75,000		\$75,000
Housing Counseling Services	\$200,000	\$400,000	\$600,000
Housing Initiative Partnership	\$0	\$225,000	\$225,000
Housing Options and Planning Enterprises Inc.	\$0	\$25,000	\$25,000
Housing Trust Fund of Northern Virginia, Inc.	\$135,000		\$135,000
Howard County General hospital	\$75,000		\$75,000
Howard University	\$0	\$20,000	\$20,000

Non-Profit Organizations	2007-2010 Funding		
	Freddie Mac Foundation	Fannie Mae	Total
Howard University General Hospital	\$100,000		\$100,000
Human Rights Campaign Foundation	\$25,000		\$25,000
Human Services Coalition of Prince George's County	\$5,000		\$5,000
Humanities Council of Washington, DC	\$0	\$25,000	\$25,000
Imagination Stage Inc.	\$176,490		\$176,490
INMED Partnership for Children	\$780,000		\$780,000
Institute for Responsible Citizenship	\$85,000		\$85,000
Interfaith Conference of Metropolitan Washington	\$0	\$5,000	\$5,000
Interfaith Works	\$15,000		\$15,000
Iona Senior ServiCes	\$0	\$4,500	\$4,500
J. C. Nalle Elementary School	\$150,000		\$150,000
Jack and Jill of America Foundation Inc	\$0	\$1,000	\$1,000
JHP, Inc.	\$50,000		\$50,000
John F Kennedy Center for the Performing Arts	\$0	\$750,000	\$750,000
Johns Hopkins University	\$30,000		\$30,000
Joint Center for Political and Economic Studies	\$0	\$20,000	\$20,000
Jubilee Housing	\$90,000	\$401,000	\$491,000
Jubilee Jumpstart, Inc.	\$50,000		\$50,000
Junior Achievement of the National Capital Area	\$0	\$31,500	\$31,500
Kairos Development Corporation	\$0	\$200,000	\$200,000
Kappa Scholarship Endowment Fund inC	\$0	\$10,000	\$10,000
Keys for the Homeless Foundation	\$0	\$5,000	\$5,000
KidSafe	\$15,000		\$15,000
KidSave International	\$40,000		\$40,000
KIPP DC	\$100,000		\$100,000
Korean American Family Counseling Center	\$60,000		\$60,000
Korean Community Service Center of Greater Washington	\$125,000		\$125,000
LA Clinica del Pueblo	\$37,500		\$37,500
Latin American Youth Center	\$802,000	\$330,000	\$1,132,000
Latin Economic Development Corporation	\$25,000	\$402,000	\$427,000
Latino Student Fund	\$60,000	\$75,000	\$135,000
Leadership Arlington, Inc.	\$10,000		\$10,000
Leadership Fairfax Inc.	\$0	\$10,000	\$10,000
Leadership Greater Washington	\$255,570	\$101,500	\$357,070
Leadership Prince George's	\$0	\$75,000	\$75,000
Leadership Washington	\$0	\$25,000	\$25,000
Legal Services of Northern Virginia	\$37,500	\$25,000	\$62,500
Levine School of Music	\$0	\$35,000	\$35,000
Little Lights Urban Ministries	\$20,000		\$20,000
Local Initiatives Support Corporation	\$75,000	\$350,000	\$425,000
Loudoun Aftercare Program	\$20,000	\$5,000	\$25,000
Loudoun Citizens for Social Justice, Inc.	\$10,000		\$10,000
Lutheran Social Services of the National Capital Area	\$115,000		\$115,000
Lydia's House	\$0	\$175,000	\$175,000
Main Street Child Development Center	\$145,000		\$145,000
Make Piece/Peace, Inc.	\$40,000		\$40,000
Make-A-Wish Foundation of the Mid-Atlantic, Inc.	\$27,500		\$27,500

Non-Profit Organizations	2007-2010 Funding		
	Freddie Mac Foundation	Fannie Mae	Total
Manassas Performing Arts, Inc.	\$7,000		\$7,000
Manna Community Development Corporation - One DC	\$0	\$200,000	\$200,000
Manna Inc	\$0	\$450,000	\$450,000
Maret School	\$0	\$10,000	\$10,000
Marie H Reed Community Learning Center	\$0	\$14,500	\$14,500
Marshall Heights Community Development Organization	\$0	\$140,000	\$140,000
Martha's Table, Inc.	\$217,500		\$217,500
Maru Montero Dance Center	\$74,500		\$74,500
Mary's Center for Maternal and Child Care Inc	\$250,000	\$5,000	\$255,000
Maryland CASA Association	\$145,000		\$145,000
Maryland Vietnamese Mutual Association, Inc.	\$30,000		\$30,000
Maryland/District of Columbia Minority Supplier Development Council	\$0	\$5,500	\$5,500
Marymount University	\$0	\$7,500	\$7,500
Mentors, Inc.	\$40,000	\$2,500	\$42,500
Metropolitan DC Foster and Adoptive Parent Association	\$30,000		\$30,000
Metropolitan Washington Council of Governments	\$616,300	\$250,000	\$866,300
Mi Casa My House Inc	\$0	\$200,000	\$200,000
Mission of Love Charities Inc	\$0	\$1,000	\$1,000
Montgomery County Coalition for the Homeless	\$1,735,000	\$55,000	\$1,790,000
MPT Foundation, Inc.	\$50,000		\$50,000
Multi Media Training Institute, Inc.	\$55,000		\$55,000
Multicultural Career Intern Program	\$30,000	\$10,000	\$40,000
My Sister's Place, Inc. (MSP)	\$145,000		\$145,000
Myrtilla Miner Elementary School	\$0	\$5,000	\$5,000
NAACP Legal Defense and Educational Fund	\$0	\$5,000	\$5,000
NAACP of Washington, DC	\$0	\$5,000	\$5,000
NAHMA Education Foundation	\$20,000		\$20,000
National Adoption Center	\$806,492		\$806,492
National Association of Black Accountants Inc Metropolitan Washington, DC	\$0	\$2,000	\$2,000
National Black Child Development Institute	\$5,000		\$5,000
National Black Church Initiative	\$0	\$30,000	\$30,000
National Building Museum	\$50,000	\$110,000	\$160,000
National Center for Black Philanthropy, Inc.	\$4,500		\$4,500
National Center for Children and Families	\$2,347,500		\$2,347,500
National Center for Children and Families - Montgomery County, MD	\$525,000		\$525,000
National Center for Children and Families -DC	\$1,618,000		\$1,618,000
National Center for Housing and Child Welfare	\$75,000		\$75,000
National Council of Negro Women Inc	\$25,000	\$5,000	\$30,000
National Court Appointed Special Advocates Association	\$50,000		\$50,000
National Fair Housing Alliance	\$0	\$10,000	\$10,000
National Foster Care Coalition	\$39,000		\$39,000
National Foundation for Teaching Entrepreneurship to Handicapped and Dis	\$310,000		\$310,000
National Gay and Lesbian Task Force	\$0	\$5,000	\$5,000
National Guard Youth Foundation	\$150,000		\$150,000
National Housing Conference	\$10,000		\$10,000
National Housing Trust Enterprise Preservation Corporation	\$140,000	\$700,000	\$840,000
National Kidney Foundation of The National Capital Area	\$0	\$10,000	\$10,000

Non-Profit Organizations	2007-2010 Funding		
	Freddie Mac Foundation	Fannie Mae	Total
National Law Center on Homelessness & Poverty	\$180,000		\$180,000
National MS Society	\$4,500		\$4,500
National Organization of Concerned Black Men	\$85,000	\$20,000	\$105,000
National Partnership For Women and Families	\$0	\$12,500	\$12,500
National Urban League (Greater Washington Urban League)	\$0	\$15,000	\$15,000
National Visionary Leadership Project	\$30,000		\$30,000
Neediest Kids, Inc.	\$10,000		\$10,000
Neighborhood Reinvestment Corporation	\$200,000		\$200,000
Network for Teaching Entrepreneurship	\$60,000		\$60,000
New Endeavors by Women	\$60,000		\$60,000
New Hope Housing, Inc.	\$155,000		\$155,000
New Leaders For New Schools	\$100,000	\$250,000	\$350,000
NHP Foundation	\$186,816		\$186,816
NIH Recreation and Welfare Foundation	\$0	\$1,000	\$1,000
Non-profit Finance Fund	\$0	\$375,000	\$375,000
Non-profit Roundtable of Greater Washington	\$355,000	\$200,000	\$555,000
Northern Virginia AIDS Ministry	\$92,500		\$92,500
Northern Virginia Family Service	\$810,000	\$250,000	\$1,060,000
Northern Virginia Family Service - Alexandria	\$75,000		\$75,000
Northern Virginia Family Service - Arlington	\$75,000		\$75,000
Northern Virginia Family Service - Fairfax County	\$150,000		\$150,000
Northern Virginia Family Service - Prince William	\$350,000		\$350,000
Northern Virginia Urban League	\$77,500		\$77,500
NOVACO Inc.	\$170,000	\$25,000	\$195,000
Npower Greater DC Region Inc.	\$20,000	\$25,000	\$45,000
Office to Prevent and End Homelessness	\$150,000		\$150,000
One DC	\$0	\$50,000	\$50,000
One Economy	\$0	\$250,000	\$250,000
One Ministries Inc	\$20,000		\$20,000
Opendoor Housing Fund	\$0	\$500,000	\$500,000
Operation Hope	\$0	\$50,000	\$50,000
Operation Understanding DC	\$0	\$5,000	\$5,000
Organizing Neighborhood Equity	\$0	\$50,000	\$50,000
Orphan Foundation of America	\$25,000		\$25,000
Parent Educational Advocacy Training Center	\$2,500		\$2,500
Parents Families and Friends of Lesbians and Gays of The Metro DC Area	\$0	\$10,000	\$10,000
Pathways to Housing	\$0	\$450,000	\$450,000
Penny Lane Centers	\$5,000		\$5,000
Perry School Community Services	\$45,000	\$1,000	\$46,000
Phillips Programs for Children and Families	\$50,000		\$50,000
Potomac Ridge Behavioral Health Foundation	\$5,000		\$5,000
Prince George's Child Resource Center, Inc.	\$165,000		\$165,000
Prince George's Community Foundation	\$170,000		\$170,000
Project Giveback Community Service Organization	\$0	\$5,000	\$5,000
Project Northstart	\$40,000		\$40,000
Providence Hospital	\$30,000		\$30,000
Ramona's Way	\$125,000		\$125,000

Non-Profit Organizations	2007-2010 Funding		
	Freddie Mac Foundation	Fannie Mae	Total
Reach for College! Inc.	\$45,000		\$45,000
Reaching Inside For Self Esteem Inc	\$0	\$1,000	\$1,000
Ready at Five Partnership	\$129,000		\$129,000
Rebuilding Together Anne Arundel County	\$0	\$2,000	\$2,000
Rebuilding together of Washington, DC	\$0	\$5,025	\$5,025
Recreation Wish List Committee of Washington DC	\$195,000	\$65,000	\$260,000
Reginald S. Lourie Center for Infants and Young Children	\$65,000		\$65,000
Reston Interfaith	\$680,050	\$100,000	\$780,050
Robert and Mary Church Terrell House and Ledroit Park Museum and Cultur	\$0	\$100,000	\$100,000
Sarah's Circle	\$0	\$55,000	\$55,000
Sasha Bruce Youthwork Inc.	\$95,000	\$75,000	\$170,000
Second Chance Employment Services	\$0	\$35,000	\$35,000
Second Change Wildlife Center Inc	\$0	\$1,000	\$1,000
See Forever Foundation and the Maya Angelou Public Chapter School	\$320,000		\$320,000
SERVE, Inc.	\$140,000		\$140,000
Sexual Minority Youth Assistance League	\$35,000		\$35,000
Shelter House, Inc.	\$350,000		\$350,000
Sidwell Friends School	\$0	\$45,000	\$45,000
Smithsonian Institution	\$0	\$60,000	\$60,000
So Others Might Eat (SOME), Inc.	\$1,390,000		\$1,390,000
Southeastern University	\$25,000	\$150,000	\$175,000
Southern Maryland Tri-County Community Action Committee Inc.	\$0	\$100,000	\$100,000
Sowing Empowerment and Economic Development	\$0	\$175,000	\$175,000
Spanish Catholic Center ArchDiocese of Washington	\$0	\$3,000	\$3,000
Spanish Education Development Center	\$0	\$50,000	\$50,000
St. Ann's Infant & Maternity House	\$110,000		\$110,000
St. Coletta of Greater Washington, Inc.	\$30,000		\$30,000
St. Stephens Economic Development Corporation	\$25,000		\$25,000
Stop Child Abuse Now (SCAN) of Northern Virginia	\$127,000		\$127,000
Street Sense	\$0	\$3,000	\$3,000
Studio Theatre Inc	\$0	\$7,500	\$7,500
Super Leaders	\$10,000	\$2,000	\$12,000
Susan G. Komen Breast Cancer Foundation Inc	\$2,500	\$20,000	\$22,500
Tahirih Justice Center	\$2,500		\$2,500
Tapfund, Inc.	\$48,000		\$48,000
Teach For America	\$0	\$275,000	\$275,000
The Barker Foundation	\$316,000		\$316,000
The Child and Family Network Centers	\$1,050,000		\$1,050,000
The Community Partnership for the Prevention of Homelessness	\$75,000		\$75,000
The Family Tree, Inc.	\$75,000		\$75,000
The Fishing School, Inc.	\$95,000		\$95,000
The Good Samaritan Foundation	\$45,000		\$45,000
The Maryland Mentoring Partnership	\$45,000		\$45,000
The National Alliance to End Homelessness	\$825,000		\$825,000
The NHP Foundation	\$750,000		\$750,000
The Reading Connection	\$280,000		\$280,000
The Ronald McDonald House Charities of Greater Washington	\$100,000		\$100,000

Non-Profit Organizations	2007-2010 Funding		
	Freddie Mac Foundation	Fannie Mae	Total
The SEED Public Charter School of Washington, D.C.	\$175,000		\$175,000
The Selma M. Levine School of Music	\$125,000		\$125,000
The Wellness Community - Greater Washington, DC	\$5,000		\$5,000
The Youth Booth, Inc.	\$50,000		\$50,000
Thurgood Marshall Academy Public Charter High School	\$165,000		\$165,000
Thurgood Marshall Center Trust	\$0	\$1,500	\$1,500
Tiger Woods Foundation	\$100,000	\$2,500,000	\$2,600,000
Training Source	\$0	\$75,000	\$75,000
Transgender Health Empowerment Inc.	\$0	\$50,000	\$50,000
Transitional Housing BARN, Inc.	\$155,000		\$155,000
Transitional Housing Corporation	\$1,170,000	\$300,000	\$1,470,000
Trust for the National Mall	\$0	\$5,000	\$5,000
U.S. Dream Academy	\$100,000		\$100,000
United Black Fund Inc of Greater Washington DC	\$0	\$7,500	\$7,500
United Communities Against Poverty	\$140,000	\$150,000	\$290,000
United Community Ministries	\$415,000		\$415,000
United Planning Organization	\$0	\$700	\$700
United Way of the National Capital Area	\$0	\$100,000	\$100,000
Unity Economic Development Corporatoin	\$0	\$190,000	\$190,000
University Legal Services	\$0	\$350,000	\$350,000
University of Maryland College Park Foundation, Inc.	\$20,000		\$20,000
University of the District of Columbia	\$0	\$200,000	\$200,000
Urban Alliance Foundation Inc	\$75,000	\$25,300	\$100,300
Urban Institute	\$0	\$800,000	\$800,000
Urban Nation, Inc.	\$175,000		\$175,000
Vienna Optimist Club Foundation, Inc	\$0	\$3,000	\$3,000
Virginia Coalition to End Homelessness	\$110,000	\$50,000	\$160,000
Virginia Early Childhood Foundation	\$100,000		\$100,000
Virginia Foundation for Community College Education	\$59,000		\$59,000
Virginia Mentoring Partnership	\$90,000		\$90,000
Virginia Poverty Law Center, Inc.	\$25,000		\$25,000
Voice for Adoption	\$40,000		\$40,000
Voices for America's Children	\$15,000		\$15,000
Voices for Virginia's Children	\$870,750		\$870,750
Voices for Virginia's Children - Northern Virginia	\$100,000		\$100,000
Volunteer Emergency Families for Children	\$90,000		\$90,000
Volunteers for Abused and Neglected Children	\$35,000		\$35,000
Ward Seven Education Council Inc	\$0	\$5,000	\$5,000
Washington Area Community Investment Fund	\$0	\$51,000	\$51,000
Washington Area Women's Foundation	\$100,000	\$650,000	\$750,000
Washington Ballet	\$0	\$55,000	\$55,000
Washington Hospital Center Foundation	\$0	\$5,000	\$5,000
Washington Interfaith Network	\$0	\$400,000	\$400,000
Washington Jesuit Academy	\$40,000	\$5,000	\$45,000
Washington Lawyers' Committee For Civil Rights & Urban Affairs	\$32,500	\$10,200	\$42,700
Washington Literacy Council	\$0	\$21,000	\$21,000
Washington Metropolitan Scholars	\$150,000		\$150,000

Non-Profit Organizations	2007-2010 Funding		
	Freddie Mac Foundation	Fannie Mae	Total
Washington Mystics Foundaiton	\$15,000		\$15,000
Washington Parks and People	\$0	\$6,000	\$6,000
Washington Redskins Charitable Foundation	\$210,000		\$210,000
Washington Regional Association of Grantmakers	\$625,000	\$764,350	\$1,389,350
Washington Tennis & Education Foundation	\$272,000	\$3,500	\$275,500
Wesley Housing Development Corporation of Northern Virginia	\$50,000	\$175,000	\$225,000
Whitman Walker Clinic	\$0	\$25,000	\$25,000
Wholistic Family Agape Ministries Institute	\$22,500		\$22,500
Wider Opportunities for Women	\$160,000		\$160,000
William Wendt Center for Loss and Healing	\$75,000		\$75,000
Wolf Trap Foundation For The Performing Arts	\$37,500	\$25,000	\$62,500
Women , Inc., Mitchellville/Bowie Section	\$1,000		\$1,000
Women and Girls in Technology Education Foundation	\$3,000		\$3,000
Women Empowered Against Violence, Inc.	\$30,000		\$30,000
Women's Bar Association Foundation	\$0	\$3,000	\$3,000
Women's Center	\$50,000		\$50,000
Women's Funding Network	\$0	\$15,000	\$15,000
Women's Institute for a Secure Retirement	\$0	\$1,000	\$1,000
Woodrow Wilson Senior High School Crew	\$0	\$250	\$250
Yachad Inc	\$0	\$3,500	\$3,500
YMCA of Metropolitan Washington	\$5,000		\$5,000
Young Playwrights' Theater	\$0	\$45,000	\$45,000
Young Women's Project	\$150,000		\$150,000
Youth Business Initiative, Inc.	\$2,000		\$2,000
Youth for Tomorrow - New Life Center, Inc.	\$25,000		\$25,000
Source: Web Sites of Fannie Mae and Freddie Mac Foundation			

APPENDIX 3

Recipient List of \$100K for Each Year by Donor

Recipients, 2007-2010, of \$100,000+											
Non-Profit Organizations	Freddie Mac Foundation					Fannie Mae				Total from	
	2007	2008	2009	2010	Total	2007	2008	2009	2010	Total	FrMac and Fmae
Adoptions Together, Inc.	\$231,500	\$186,500	\$184,140	\$197,987	\$800,127	\$0	\$0	\$0		\$0	\$800,127
Advocates for Children and Youth	\$158,670	\$115,000	\$50,000	\$60,000	\$383,670	\$0	\$0	\$0		\$0	\$383,670
Alexandria Seaport Foundation	\$40,000	\$40,000	\$40,000	\$40,000	\$160,000	\$5,000	\$0	\$0		\$5,000	\$165,000
Archdiocese of Washington Chancery	\$0	\$0	\$0	\$0	\$0	\$0	\$180,000	\$250,000		\$430,000	\$430,000
Arlington Home Ownership Made Easier	\$0	\$0	\$0	\$0	\$0	\$0	\$50,000	\$50,000	\$45,000	\$145,000	\$145,000
Asian American LEAD	\$95,000	\$47,500	\$0	\$0	\$142,500	\$0	\$0	\$0		\$0	\$142,500
Beacon House Community Ministry, Inc.	\$30,000	\$30,000	\$30,000	\$30,000	\$120,000	\$0	\$0	\$0		\$0	\$120,000
Bethany House of Northern Virginia, Inc.	\$20,000	\$0	\$60,000	\$45,000	\$125,000	\$0	\$0	\$0		\$0	\$125,000
Black Student Fund	\$35,000	\$0	\$45,000	\$15,000	\$95,000	\$50,000	\$5,000	\$0		\$55,000	\$150,000
Boys and Girls Clubs of Greater Washington	\$1,360,000	\$400,000	\$175,000	\$175,000	\$2,110,000	\$100,000	\$100,000	\$50,000		\$250,000	\$2,360,000
Bright Beginnings, Inc.	\$301,000	\$0	\$250,000	\$275,000	\$826,000	\$0	\$0	\$0		\$0	\$826,000
BU-GATA	\$25,000	\$40,000	\$40,000	\$40,000	\$145,000	\$0	\$0	\$0		\$0	\$145,000
Building Bridges Across the River	\$0	\$0	\$0	\$0	\$0	\$875,000	\$100,000	\$50,000		\$1,025,000	\$1,025,000
Capital Partners for Education	\$30,000	\$30,000	\$30,000	\$35,000	\$125,000	\$0	\$0	\$0		\$0	\$125,000
Carnegie Institute of Washington	\$0	\$0	\$0	\$0	\$0	\$60,000	\$60,000	\$50,000		\$170,000	\$170,000
Carpenter's Shelter	\$100,000	\$105,000	\$225,000	\$275,000	\$705,000	\$0	\$0	\$0		\$0	\$705,000
Center City Public Chapter Schools, Inc.	\$0	\$200,000	\$0	\$0	\$200,000	\$0	\$0	\$0		\$0	\$200,000
Center for Adoption Support and Education, Inc.	\$212,000	\$192,000	\$100,000	\$150,000	\$654,000	\$0	\$0	\$0		\$0	\$654,000
Center For Inspired Teaching	\$0	\$0	\$0	\$0	\$0	\$100,000	\$0	\$0		\$100,000	\$100,000
CentroNia	\$310,000	\$300,000	\$50,000	\$110,000	\$770,000	\$1,000	\$1,000	\$0		\$2,000	\$772,000
Cesar Chavez Public Charter Schools for Public Policy	\$90,000	\$15,000	\$51,000	\$51,000	\$207,000	\$0	\$0	\$0		\$0	\$207,000
CharityWorks	\$75,000	\$50,000	\$0	\$0	\$125,000	\$0	\$0	\$0		\$0	\$125,000
Child Welfare League of America	\$95,000	\$0	\$15,000	\$20,000	\$130,000	\$0	\$0	\$0		\$0	\$130,000
Children's Defense Fund	\$351,000	\$350,000	\$25,000	\$25,000	\$751,000	\$0	\$0	\$0		\$0	\$751,000
Children's Hospital Foundation	\$102,500	\$100,000	\$50,000	\$50,000	\$302,500	\$5,000	\$0	\$0		\$5,000	\$307,500
Children's Law Center	\$90,000	\$115,000	\$70,000	\$70,000	\$345,000	\$2,500	\$2,500	\$0		\$5,000	\$350,000
City First Enterprises	\$0	\$0	\$0	\$0	\$0	\$100,000	\$500,000	\$250,000	\$300,000	\$1,150,000	\$1,150,000
Coalition For Nonprofit Housing and Economic Development	\$0	\$0	\$30,000	\$75,000	\$105,000	\$185,000	\$100,000	\$100,000	\$75,000	\$460,000	\$565,000
College Bound, Inc.	\$70,000	\$45,000	\$0	\$30,000	\$145,000	\$0	\$0	\$0		\$0	\$145,000
College Summit, Inc.	\$50,000	\$50,000	\$40,000	\$40,000	\$180,000	\$0	\$0	\$0		\$0	\$180,000
Common Ground Community Housing Development Fund Corporation	\$0	\$0	\$0	\$0	\$0	\$0	\$50,000	\$125,000		\$175,000	\$175,000
Community Bridges	\$125,000	\$12,500	\$0	\$0	\$137,500	\$0	\$0	\$0		\$0	\$137,500
Community Builders	\$0	\$0	\$0	\$0	\$0	\$100,000	\$50,000	\$50,000	\$150,000	\$350,000	\$350,000
Community Council for the Homeless at Friendship Place	\$0	\$0	\$0	\$0	\$0	\$0	\$0	\$50,000	\$50,000	\$100,000	\$100,000
Community Family Life Services Inc.	\$0	\$50,000	\$50,000	\$50,000	\$150,000	\$0	\$0	\$500		\$500	\$150,500
Community Foundation For the National Capital Region	\$25,000	\$87,500	\$0	\$10,000	\$122,500	\$270,000	\$2,687,652	\$2,180,634	\$2,624,171	\$7,762,457	\$7,884,957
Community Lodgings, Inc.	\$35,000	\$40,000	\$60,000	\$60,000	\$195,000	\$0	\$0	\$0		\$0	\$195,000
Community of Hope	\$250,000	\$375,000	\$375,000	\$375,000	\$1,375,000	\$0	\$0	\$75,000	\$100,000	\$175,000	\$1,550,000
Community Preservation and Development Corporation	\$60,000	\$0	\$100,000	\$100,000	\$260,000	\$0	\$100,000	\$100,000	\$200,000	\$400,000	\$660,000
Congressional Coalition on Adoption Institute	\$310,000	\$100,000	\$100,000	\$110,000	\$620,000	\$0	\$0	\$0		\$0	\$620,000
Cornerstone Inc.	\$0	\$0	\$0	\$0	\$0	\$0	\$0	\$225,000	\$150,000	\$375,000	\$375,000
Corporation for Enterprise Development	\$0	\$0	\$0	\$100,000	\$100,000	\$0	\$0	\$0		\$0	\$100,000
Corporation For Supportive Housing	\$0	\$0	\$0	\$0	\$0	\$300,000	\$0	\$0		\$300,000	\$300,000
Covenant House Washington DC	\$0	\$0	\$400,000	\$200,000	\$600,000	\$51,000	\$100,000	\$200,000	\$150,000	\$501,000	\$1,101,000
Crossway Community	\$50,000	\$50,000	\$50,000	\$60,000	\$210,000	\$0	\$0	\$0		\$0	\$210,000
DC Action for Children	\$150,000	\$125,000	\$0	\$0	\$275,000	\$0	\$0	\$0		\$0	\$275,000
DC Children & Youth Investment Trust Corporation	\$35,000	\$0	\$0	\$0	\$35,000	\$407,000	\$400,000	\$250,000		\$1,057,000	\$1,092,000
DC Children's Advocacy Center	\$37,500	\$35,000	\$30,000	\$30,000	\$132,500	\$0	\$0	\$0		\$0	\$132,500
District Alliance for Safe Housing, Inc.	\$20,000	\$20,000	\$50,000	\$50,000	\$140,000	\$0	\$0	\$0		\$0	\$140,000
District of Columbia Sports and Entertainment Commission	\$0	\$0	\$0	\$0	\$0	\$3,907,000	\$0	\$0		\$3,907,000	\$3,907,000
Doorways for Women and Families	\$300,000	\$310,000	\$300,000	\$300,000	\$1,210,000	\$0	\$0	\$0		\$0	\$1,210,000
East of the River Community Development Corporation	\$0	\$0	\$0	\$0	\$0	\$150,000	\$100,000	\$0		\$250,000	\$250,000
Easter Seals Greater Washington-Baltimore Region, Inc.	\$50,000	\$25,000	\$20,000	\$35,000	\$130,000	\$0	\$0	\$0		\$0	\$130,000
Enterprise Community Partners Inc	\$400,000	\$280,000	\$150,000	\$225,000	\$1,055,000	\$100,000	\$75,000	\$400,000		\$575,000	\$1,630,000
Fairfax County Government	\$100,000	\$0	\$0	\$0	\$100,000	\$0	\$0	\$0		\$0	\$100,000
Fairfax Futures	\$200,000	\$50,000	\$0	\$0	\$250,000	\$0	\$0	\$0		\$0	\$250,000
Family Services Agency, Inc.	\$100,000	\$25,000	\$150,000	\$0	\$275,000	\$0	\$0	\$0		\$0	\$275,000
Fight for Children	\$0	\$100,000	\$7,500	\$15,000	\$122,500	\$0	\$50,000	\$25,000		\$75,000	\$197,500
Financial Literacy Education Foundation	\$0	\$0	\$0	\$0	\$0	\$75,000	\$50,000	\$50,000		\$175,000	\$175,000
Foster and Adoptive Parent Advocacy Center	\$105,000	\$0	\$180,000	\$90,500	\$375,500	\$0	\$0	\$0		\$0	\$375,500

Recipients, 2007-2010, of \$100,000+											
Non-Profit Organizations	Freddie Mac Foundation					Fannie Mae					Total from
	2007	2008	2009	2010	Total	2007	2008	2009	2010	Total	FrMac and Fmae
Four Walls Development Inc	\$0	\$0	\$0	\$0	\$0	\$0	\$25,000	\$75,000	\$75,000	\$175,000	\$175,000
Girl Scout Council of the National Capital Area	\$85,000	\$0	\$0	\$0	\$85,000	\$25,000	\$30,000	\$25,000		\$80,000	\$165,000
Girls Incorporated of the Washington DC Metropolitan Area	\$50,000	\$25,000	\$0	\$0	\$75,000	\$25,000	\$25,000	\$50,000		\$100,000	\$175,000
Good Shepherd Housing and Family Services Inc.	\$75,000	\$75,000	\$100,000	\$110,000	\$360,000	\$0	\$0	\$0	\$50,000	\$50,000	\$410,000
Greater DC Cares	\$0	\$0	\$0	\$0	\$0	\$109,500	\$185,000	\$50,000	\$100,000	\$444,500	\$444,500
Greater Washington Urban League	\$0	\$0	\$0	\$0	\$0	\$0	\$100,000	\$100,000	\$100,000	\$300,000	\$300,000
H Street Community Development Corporation	\$0	\$0	\$0	\$0	\$0	\$0	\$50,000	\$50,000	\$50,000	\$150,000	\$150,000
Heads Up: A University Neighborhood Initiative	\$40,000	\$0	\$30,000	\$30,000	\$100,000	\$0	\$0	\$0		\$0	\$100,000
Healthy Teen Network	\$100,000	\$100,000	\$0	\$0	\$200,000	\$0	\$0	\$0		\$0	\$200,000
Heartly House, inc.	\$150,000	\$150,000	\$100,000	\$100,000	\$500,000	\$0	\$0	\$0		\$0	\$500,000
Higher Achievement Program	\$600,000	\$250,000	\$210,000	\$220,000	\$1,280,000	\$0	\$5,000	\$0		\$5,000	\$1,285,000
Homefree USA	\$0	\$0	\$0	\$0	\$0	\$0	\$50,000	\$150,000	\$200,000	\$400,000	\$400,000
Homestretch	\$100,000	\$100,000	\$115,000	\$110,000	\$425,000	\$0	\$0	\$12,500		\$12,500	\$437,500
Hoop Dreams Scholarship Fund	\$200,000	\$80,000	\$0	\$0	\$280,000	\$0	\$5,000	\$0		\$5,000	\$285,000
Hope and a Home, Inc.	\$100,000	\$100,000	\$100,000	\$100,000	\$400,000	\$0	\$0	\$0		\$0	\$400,000
Horton's Kids Inc	\$45,000	\$50,000	\$40,000	\$40,000	\$175,000	\$0	\$0	\$0		\$0	\$175,000
House of Ruth	\$100,000	\$100,000	\$100,000	\$100,000	\$400,000	\$0	\$0	\$0		\$0	\$400,000
Housing Counseling Services	\$0	\$0	\$100,000	\$100,000	\$200,000	\$50,000	\$100,000	\$125,000	\$125,000	\$400,000	\$600,000
Housing Initiative Partnership	\$0	\$0	\$0	\$0	\$0	\$0	\$25,000	\$75,000	\$125,000	\$225,000	\$225,000
Housing Trust Fund of Northern Virginia, Inc.	\$0	\$25,000	\$50,000	\$60,000	\$135,000	\$0	\$0	\$0		\$0	\$135,000
Howard University General Hospital	\$100,000	\$0	\$0	\$0	\$100,000	\$0	\$0	\$0		\$0	\$100,000
Imagination Stage Inc.	\$71,490	\$35,000	\$35,000	\$35,000	\$176,490	\$0	\$0	\$0		\$0	\$176,490
INMED Partnership for Children	\$150,000	\$175,000	\$250,000	\$205,000	\$780,000	\$0	\$0	\$0		\$0	\$780,000
J. C. Nalle Elementary School	\$25,000	\$75,000	\$25,000	\$25,000	\$150,000	\$0	\$0	\$0		\$0	\$150,000
John F Kennedy Center for the Performing Arts	\$0	\$0	\$0	\$0	\$0	\$750,000	\$0	\$0		\$750,000	\$750,000
Jubilee Housing	\$0	\$0	\$50,000	\$40,000	\$90,000	\$0	\$101,000	\$150,000	\$150,000	\$401,000	\$491,000
Kairos Development Corporation	\$0	\$0	\$0	\$0	\$0	\$0	\$50,000	\$0	\$150,000	\$200,000	\$200,000
KIPP DC	\$0	\$0	\$0	\$100,000	\$100,000	\$0	\$0	\$0		\$0	\$100,000
Korean Community Service Center of Greater Washington	\$70,000	\$45,000	\$5,000	\$5,000	\$125,000	\$0	\$0	\$0		\$0	\$125,000
Latin American Youth Center	\$306,000	\$266,000	\$130,000	\$100,000	\$802,000	\$30,000	\$50,000	\$100,000	\$150,000	\$330,000	\$1,132,000
Latin Economic Development Corporation	\$0	\$25,000	\$0	\$0	\$25,000	\$0	\$77,000	\$225,000	\$100,000	\$402,000	\$427,000
Latino Student Fund	\$15,000	\$15,000	\$15,000	\$15,000	\$60,000	\$25,000	\$25,000	\$25,000		\$75,000	\$135,000
Leadership Washington or Leadership Greater Washington	\$145,570	\$30,000	\$0	\$80,000	\$255,570	\$50,000	\$25,000	\$25,000	\$26,500	\$126,500	\$382,070
Local Initiatives Support Corporation	\$75,000	\$0	\$0	\$0	\$75,000	\$200,000	\$150,000	\$0		\$350,000	\$425,000
Lutheran Social Services of the National Capital Area	\$25,000	\$30,000	\$30,000	\$30,000	\$115,000	\$0	\$0	\$0		\$0	\$115,000
Lydia's House	\$0	\$0	\$0	\$0	\$0	\$0	\$50,000	\$50,000	\$75,000	\$175,000	\$175,000
Main Street Child Development Center	\$40,000	\$35,000	\$35,000	\$35,000	\$145,000	\$0	\$0	\$0		\$0	\$145,000
Manna, Inc	\$0	\$0	\$0	\$0	\$0	\$50,000	\$100,000	\$0	\$300,000	\$450,000	\$450,000
Marshall Heights Community Development Organization	\$0	\$0	\$0	\$0	\$0	\$0	\$50,000	\$90,000		\$140,000	\$140,000
Martha's Table, Inc.	\$50,000	\$125,000	\$22,500	\$20,000	\$217,500	\$0	\$0	\$0		\$0	\$217,500
Mary's Center for Maternal and Child Care Inc	\$115,000	\$100,000	\$30,000	\$5,000	\$250,000	\$0	\$5,000	\$0		\$5,000	\$255,000
Metropolitan Washington Council of Governments	\$256,000	\$157,500	\$75,000	\$127,800	\$616,300	\$0	\$50,000	\$100,000	\$100,000	\$250,000	\$866,300
Mi Casa My House Inc	\$0	\$0	\$0	\$0	\$0	\$0	\$50,000	\$50,000	\$100,000	\$200,000	\$200,000
Montgomery County Coalition for the Homeless	\$350,000	\$455,000	\$455,000	\$475,000	\$1,735,000	\$0	\$2,500	\$2,500	\$50,000	\$55,000	\$1,790,000
My Sister's Place, Inc. (MSP)	\$95,000	\$50,000	\$0	\$0	\$145,000	\$0	\$0	\$0		\$0	\$145,000
National Adoption Center	\$199,465	\$232,245	\$186,377	\$188,405	\$806,492	\$0	\$0	\$0		\$0	\$806,492
National Building Museum	\$25,000	\$25,000	\$0	\$0	\$50,000	\$60,000	\$50,000	\$0		\$110,000	\$160,000
National Foundation for Teaching Entrepreneurship to Handicapped	\$200,000	\$110,000	\$0	\$0	\$310,000	\$0	\$0	\$0		\$0	\$310,000
National Guard Youth Foundation	\$50,000	\$100,000	\$0	\$0	\$150,000	\$0	\$0	\$0		\$0	\$150,000
National Housing Trust Enterprise Preservation Corporation	\$50,000	\$0	\$40,000	\$50,000	\$140,000	\$150,000	\$150,000	\$150,000	\$250,000	\$700,000	\$840,000
National Law Center on Homelessness & Poverty	\$50,000	\$50,000	\$55,000	\$25,000	\$180,000	\$0	\$0	\$0		\$0	\$180,000
National Organization of Concerned Black Men	\$25,000	\$20,000	\$20,000	\$20,000	\$85,000	\$20,000	\$0	\$0		\$20,000	\$105,000
Neighborhood Reinvestment Corporation	\$100,000	\$100,000	\$0	\$0	\$200,000	\$0	\$0	\$0		\$0	\$200,000
New Hope Housing, Inc.	\$45,000	\$30,000	\$30,000	\$50,000	\$155,000	\$0	\$0	\$0		\$0	\$155,000
New Leaders For New Schools	\$0	\$100,000	\$0	\$0	\$100,000	\$100,000	\$75,000	\$75,000		\$250,000	\$350,000
NHP Foundation	\$186,816	\$0	\$0	\$0	\$186,816	\$0	\$0	\$0		\$0	\$186,816
Non-profit Finance Fund	\$0	\$0	\$0	\$0	\$0	\$0	\$100,000	\$125,000	\$150,000	\$375,000	\$375,000
Non-profit Roundtable of Greater Washington	\$160,000	\$100,000	\$25,000	\$70,000	\$355,000	\$50,000	\$50,000	\$50,000	\$50,000	\$200,000	\$555,000
NOVACO Inc.	\$20,000	\$40,000	\$50,000	\$60,000	\$170,000	\$0	\$0	\$0	\$25,000	\$25,000	\$195,000
Office to Prevent and End Homelessness	\$0	\$0	\$0	\$150,000	\$150,000	\$0	\$0	\$0		\$0	\$150,000

Recipients, 2007-2010, of \$100,000+											
Non-Profit Organizations	Freddie Mac Foundation					Fannie Mae					Total from
	2007	2008	2009	2010	Total	2007	2008	2009	2010	Total	FrMac and Fmae
One Economy	\$0	\$0	\$0	\$0	\$0	\$0	\$150,000	\$100,000		\$250,000	\$250,000
Opendoor Housing Fund	\$0	\$0	\$0	\$0	\$0	\$0	\$150,000	\$150,000	\$200,000	\$500,000	\$500,000
Pathways to Housing	\$0	\$0	\$0	\$0	\$0	\$50,000	\$100,000	\$150,000	\$150,000	\$450,000	\$450,000
Prince George's Child Resource Center, Inc.	\$15,000	\$100,000	\$50,000	\$0	\$165,000	\$0	\$0	\$0		\$0	\$165,000
Prince George's Community Foundation	\$0	\$135,000	\$35,000	\$0	\$170,000	\$0	\$0	\$0		\$0	\$170,000
Ramona's Way	\$50,000	\$25,000	\$50,000	\$0	\$125,000	\$0	\$0	\$0		\$0	\$125,000
Ready at Five Partnership	\$50,000	\$79,000	\$0	\$0	\$129,000	\$0	\$0	\$0		\$0	\$129,000
Recreation Wish List Committee of Washington DC	\$125,000	\$30,000	\$20,000	\$20,000	\$195,000	\$25,000	\$20,000	\$20,000		\$65,000	\$260,000
Reston Interfaith	\$177,421	\$261,459	\$45,000	\$196,170	\$680,050	\$0	\$0	\$50,000	\$50,000	\$100,000	\$780,050
Robert and Mary Church Terrell House and Ledroit Park Museum and	\$0	\$0	\$0	\$0	\$0	\$0	\$100,000	\$0		\$100,000	\$100,000
Sasha Bruce Youthwork Inc.	\$0	\$35,000	\$30,000	\$30,000	\$95,000	\$0	\$0	\$75,000		\$75,000	\$170,000
See Forever Foundation and the Maya Angelou Public Chapter Scho	\$160,000	\$60,000	\$50,000	\$50,000	\$320,000	\$0	\$0	\$0		\$0	\$320,000
SERVE, Inc.	\$90,000	\$50,000	\$0	\$0	\$140,000	\$0	\$0	\$0		\$0	\$140,000
Shelter House, Inc.	\$120,000	\$100,000	\$20,000	\$110,000	\$350,000	\$0	\$0	\$0		\$0	\$350,000
So Others Might Eat (SOME), Inc.	\$265,000	\$400,000	\$400,000	\$325,000	\$1,390,000	\$0	\$0	\$0		\$0	\$1,390,000
Southeastern University	\$25,000	\$0	\$0	\$0	\$25,000	\$150,000	\$0	\$0		\$150,000	\$175,000
Southern Maryland Tri-County Community Action Committee Inc.	\$0	\$0	\$0	\$0	\$0	\$0	\$0	\$50,000	\$50,000	\$100,000	\$100,000
Sowing Empowerment and Economic Development	\$0	\$0	\$0	\$0	\$0	\$0	\$0	\$75,000	\$100,000	\$175,000	\$175,000
St. Ann's Infant & Maternity House	\$40,000	\$35,000	\$35,000	\$0	\$110,000	\$0	\$0	\$0		\$0	\$110,000
Stop Child Abuse Now (SCAN) of Northern Virginia	\$62,000	\$25,000	\$20,000	\$20,000	\$127,000	\$0	\$0	\$0		\$0	\$127,000
Teach For America	\$0	\$0	\$0	\$0	\$0	\$100,000	\$100,000	\$75,000		\$275,000	\$275,000
The Barker Foundation	\$121,000	\$70,000	\$60,000	\$65,000	\$316,000	\$0	\$0	\$0		\$0	\$316,000
The Child and Family Network Centers	\$275,000	\$25,000	\$550,000	\$200,000	\$1,050,000	\$0	\$0	\$0		\$0	\$1,050,000
The National Alliance to End Homelessness	\$25,000	\$274,400	\$289,470	\$236,130	\$825,000	\$0	\$0	\$0		\$0	\$825,000
The NHP Foundation	\$0	\$0	\$225,000	\$525,000	\$750,000	\$0	\$0	\$0		\$0	\$750,000
The Reading Connection	\$80,000	\$100,000	\$50,000	\$50,000	\$280,000	\$0	\$0	\$0		\$0	\$280,000
The Ronald McDonald House Charities of Greater Washington	\$100,000	\$0	\$0	\$0	\$100,000	\$0	\$0	\$0		\$0	\$100,000
The SEED Public Charter School of Washington, D.C.	\$50,000	\$50,000	\$40,000	\$35,000	\$175,000	\$0	\$0	\$0		\$0	\$175,000
The Selma M. Levine School of Music	\$125,000	\$0	\$0	\$0	\$125,000	\$0	\$0	\$0		\$0	\$125,000
Thurgood Marshall Academy Public Charter High School	\$40,000	\$50,000	\$40,000	\$35,000	\$165,000	\$0	\$0	\$0		\$0	\$165,000
Tiger Woods Foundation	\$0	\$100,000	\$0	\$0	\$100,000	\$0	\$2,500,000	\$0		\$2,500,000	\$2,600,000
Transitional Housing BARN, Inc.	\$0	\$50,000	\$50,000	\$55,000	\$155,000	\$0	\$0	\$0		\$0	\$155,000
Transitional Housing Corporation	\$70,000	\$375,000	\$350,000	\$375,000	\$1,170,000	\$0	\$50,000	\$125,000	\$125,000	\$300,000	\$1,470,000
U.S. Dream Academy	\$100,000	\$0	\$0	\$0	\$100,000	\$0	\$0	\$0		\$0	\$100,000
United Communities Against Poverty	\$15,000	\$25,000	\$50,000	\$50,000	\$140,000	\$0	\$0	\$75,000	\$75,000	\$150,000	\$290,000
United Community Ministries	\$50,000	\$70,000	\$145,000	\$150,000	\$415,000	\$0	\$0	\$0		\$0	\$415,000
United Way of the National Capital Area	\$0	\$0	\$0	\$0	\$0	\$0	\$100,000	\$0		\$100,000	\$100,000
Unity Economic Development Corporation	\$0	\$0	\$0	\$0	\$0	\$0	\$0	\$90,000	\$100,000	\$190,000	\$190,000
University Legal Services	\$0	\$0	\$0	\$0	\$0	\$0	\$75,000	\$100,000	\$175,000	\$350,000	\$350,000
University of the District of Columbia	\$0	\$0	\$0	\$0	\$0	\$0	\$0	\$200,000		\$200,000	\$200,000
Urban Alliance Foundation Inc	\$25,000	\$0	\$20,000	\$30,000	\$75,000	\$25,300	\$0	\$0		\$25,300	\$100,300
Urban Institute	\$0	\$0	\$0	\$0	\$0	\$0	\$300,000	\$300,000	\$200,000	\$800,000	\$800,000
Urban Nation, Inc.	\$100,000	\$75,000	\$0	\$0	\$175,000	\$0	\$0	\$0		\$0	\$175,000
Virginia Coalition to End Homelessness	\$0	\$50,000	\$30,000	\$30,000	\$110,000	\$0	\$0	\$25,000	\$25,000	\$50,000	\$160,000
Virginia Early Childhood Foundation	\$100,000	\$0	\$0	\$0	\$100,000	\$0	\$0	\$0		\$0	\$100,000
Voices for Virginia's Children	\$368,750	\$236,000	\$133,000	\$133,000	\$870,750	\$0	\$0	\$0		\$0	\$870,750
Voices for Virginia's Children - Northern Virginia	\$0	\$100,000	\$0	\$0	\$100,000	\$0	\$0	\$0		\$0	\$100,000
Washington Area Women's Foundation	\$87,500	\$12,500	\$0	\$0	\$100,000	\$75,000	\$225,000	\$200,000	\$150,000	\$650,000	\$750,000
Washington Interfaith Network	\$0	\$0	\$0	\$0	\$0	\$50,000	\$100,000	\$100,000	\$150,000	\$400,000	\$400,000
Washington Metropolitan Scholars	\$150,000	\$0	\$0	\$0	\$150,000	\$0	\$0	\$0		\$0	\$150,000
Washington Redskins Charitable Foundation	\$100,000	\$110,000	\$0	\$0	\$210,000	\$0	\$0	\$0		\$0	\$210,000
Washington Regional Association of Grantmakers	\$280,000	\$180,000	\$100,000	\$65,000	\$625,000	\$189,350	\$200,000	\$200,000	\$175,000	\$764,350	\$1,389,350
Washington Tennis & Education Foundation	\$75,000	\$60,000	\$50,000	\$87,000	\$272,000	\$0	\$3,000	\$500		\$3,500	\$275,500
Wesley Housing Development Corporation of Northern Virginia	\$0	\$0	\$0	\$50,000	\$50,000	\$0	\$0	\$75,000	\$100,000	\$175,000	\$225,000
Wider Opportunities for Women	\$100,000	\$35,000	\$25,000	\$0	\$160,000	\$0	\$0	\$0		\$0	\$160,000
Young Women's Project	\$50,000	\$0	\$70,000	\$30,000	\$150,000	\$0	\$0	\$0		\$0	\$150,000

Sources: Fannie Mae and Freddie Mac Foundation