

# REGIONAL PAPER BIKE MAP

---

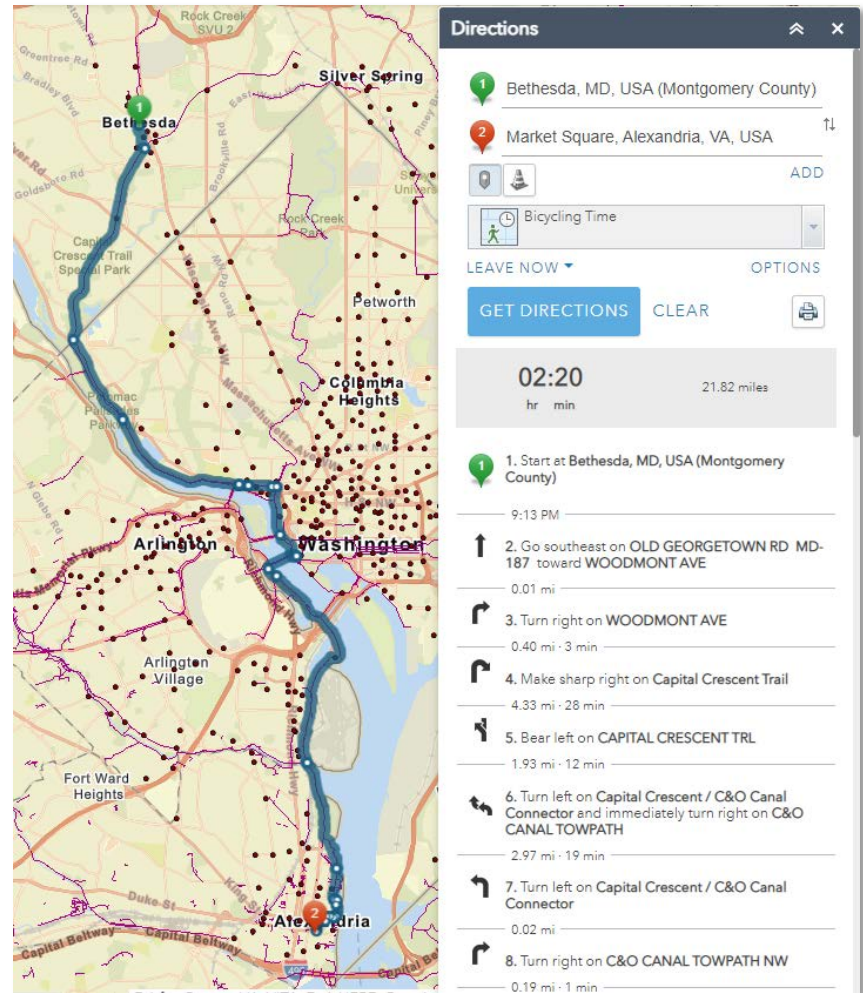
## Progress Update

Dan Sheehan  
Transportation Program Operations Manager

Commuter Connections Subcommittee  
March 16, 2021

# Context: Bike Routing Module

- Bike Routing Module launched in 2018
  - 1,400 miles of trails
  - Uses trails data gathered from local jurisdictions
  - Commuter Connections account required to access
- Stakeholder feedback: Is it possible to develop a paper version?



# Purpose & Needs Fulfillment

---

- Display relevant bicycling infrastructure to cyclists throughout the TPB non-attainment area
- Serve cyclists by:
  - Route planning
  - On-the-go resource; portable
  - Directory to regional cycling resources
- **Key Challenge:** Integrate bicycling data in disparate formats from various jurisdictions and translate into a cohesive network

# Current DRAFT Specifications

---

- Regional Overview Map
- Local Inset Maps
  - Inner Core (District, Arlington, Alexandria)
  - Others? (feedback welcome)
    - Vienna / Fairfax
    - Silver Spring / Rockville / Gaithersburg
- Inspiration: Existing bike routing module; local jurisdiction maps; National Capital Trail Network
- 44" x 32" / 24 panels
  - Same size as the ADC Bike Map from 2004

# Feedback & Next Steps

---

## Commuter Connections appreciates your feedback!

- Are there additional routes that should be displayed?
- Which areas could serve as helpful inset maps?
- What cycling resources could be referenced in the text portion?
- ...and anything else!

## Next Steps

- To be considered for the limited first print run, please submit feedback by Tuesday, March 23.
- Print order to be placed in time for Bike to Work Day
- Future revisions / updates are expected

## Dan Sheehan

DTP Program Operations Manager

(202) 962-3287

dsheehan@mwkog.org

[commuterconnections.org](http://commuterconnections.org)

---

Metropolitan Washington Council of Governments

777 North Capitol Street NE, Suite 300

Washington, DC 20002