

# ANALYSIS OF TRAVEL ON METRORAIL SHUTDOWN DAY

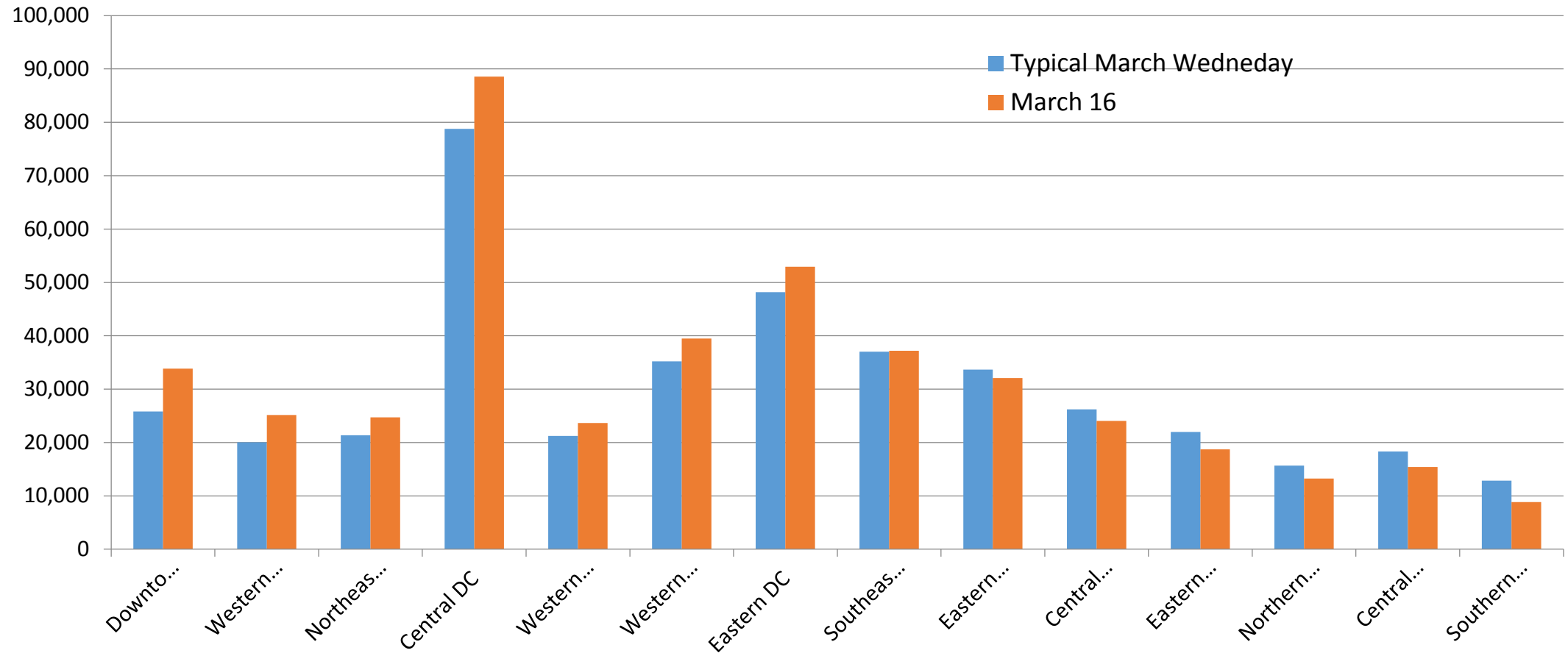
---

Robert Griffiths  
TPB Planning and Programming Director

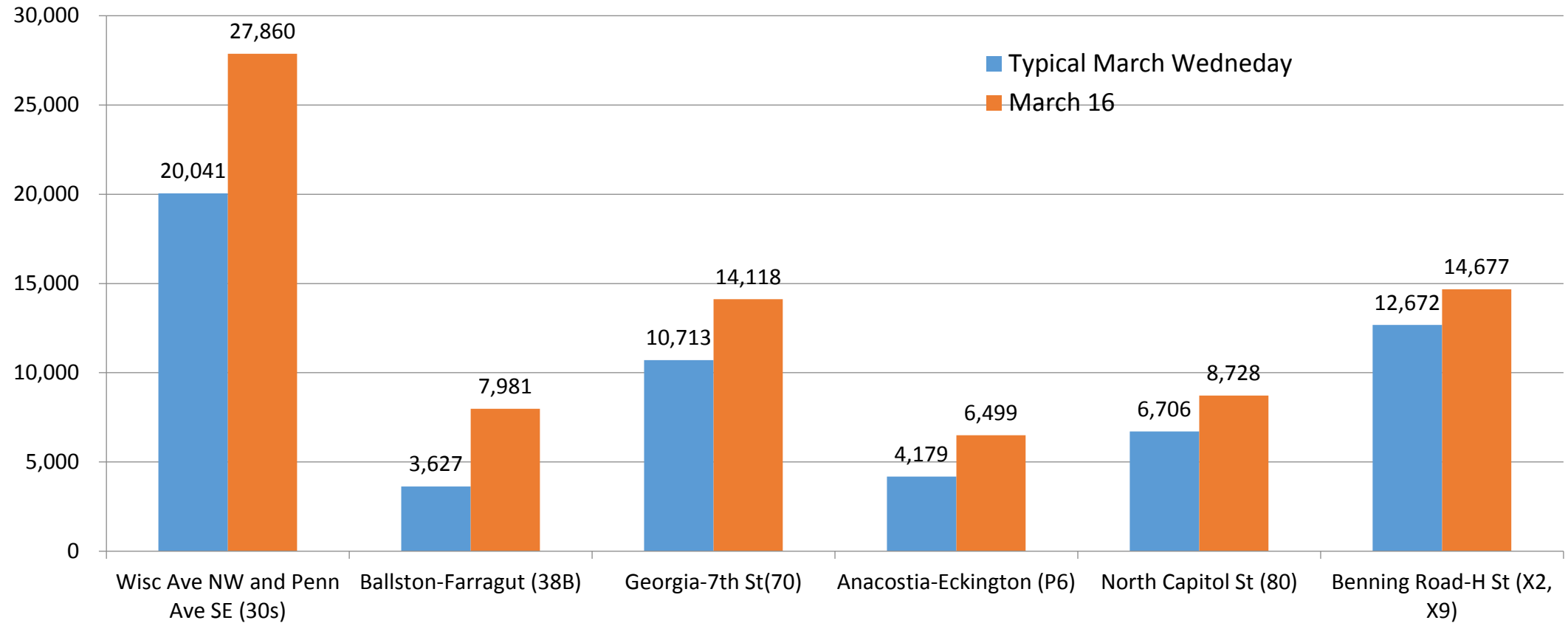
Commuter Connections Subcommittee  
May 17, 2016



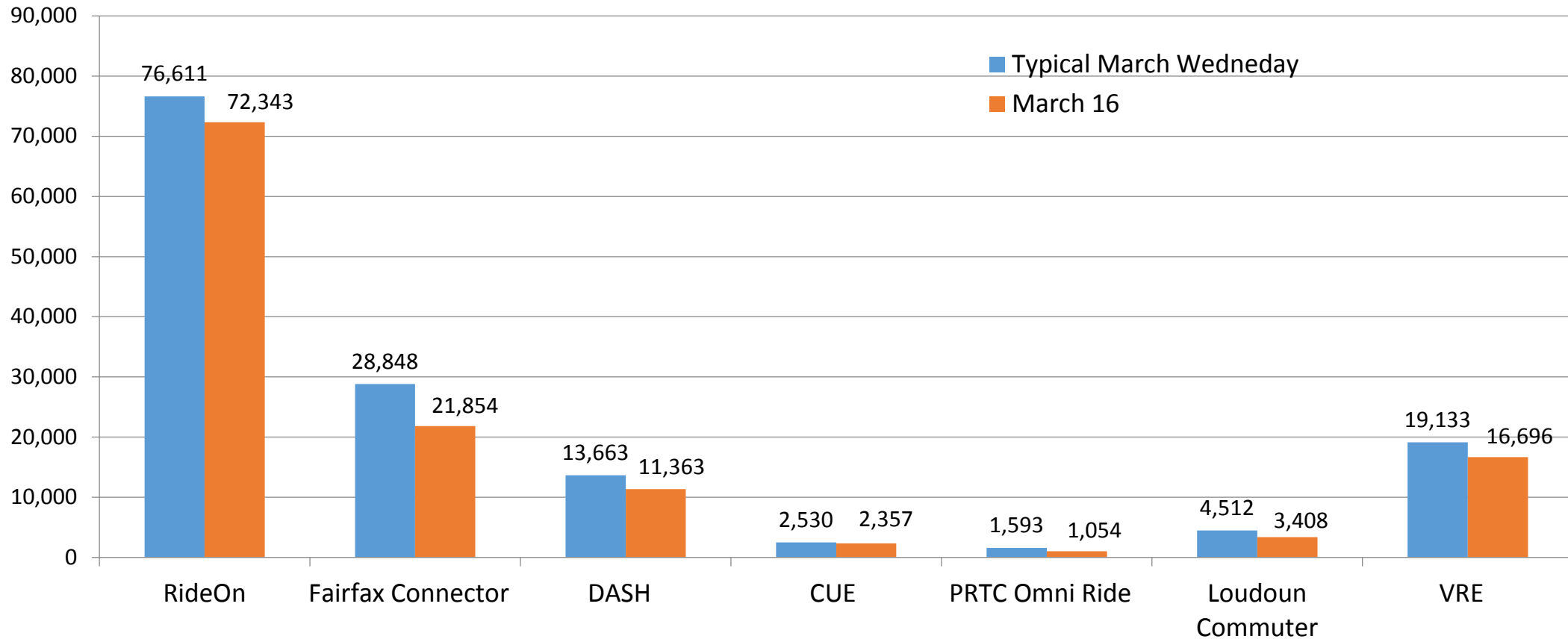
# Metrobus Ridership by Bus Planning Sector on Metrorail Shutdown Day



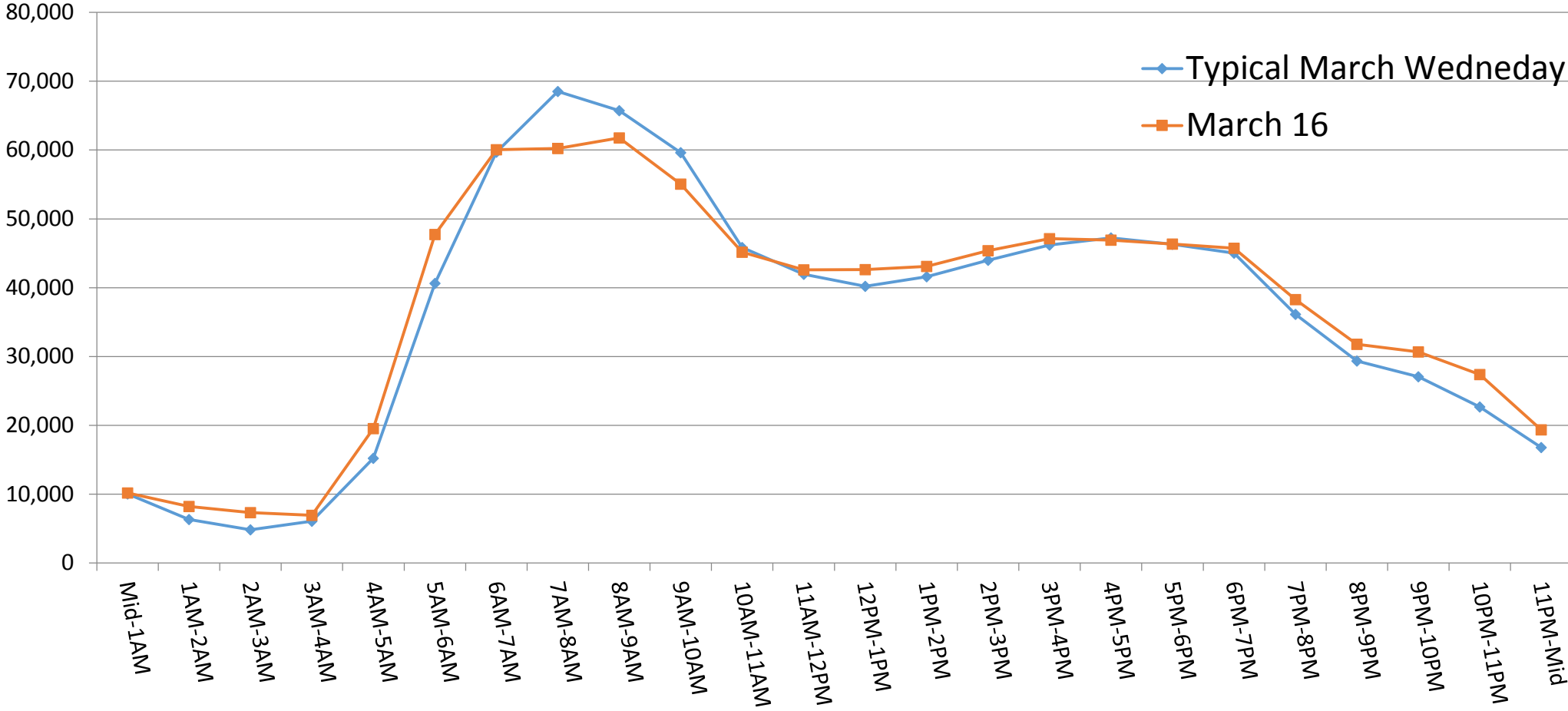
# Metrobus Routes With Large Ridership Increases on Metrorail Shutdown Day



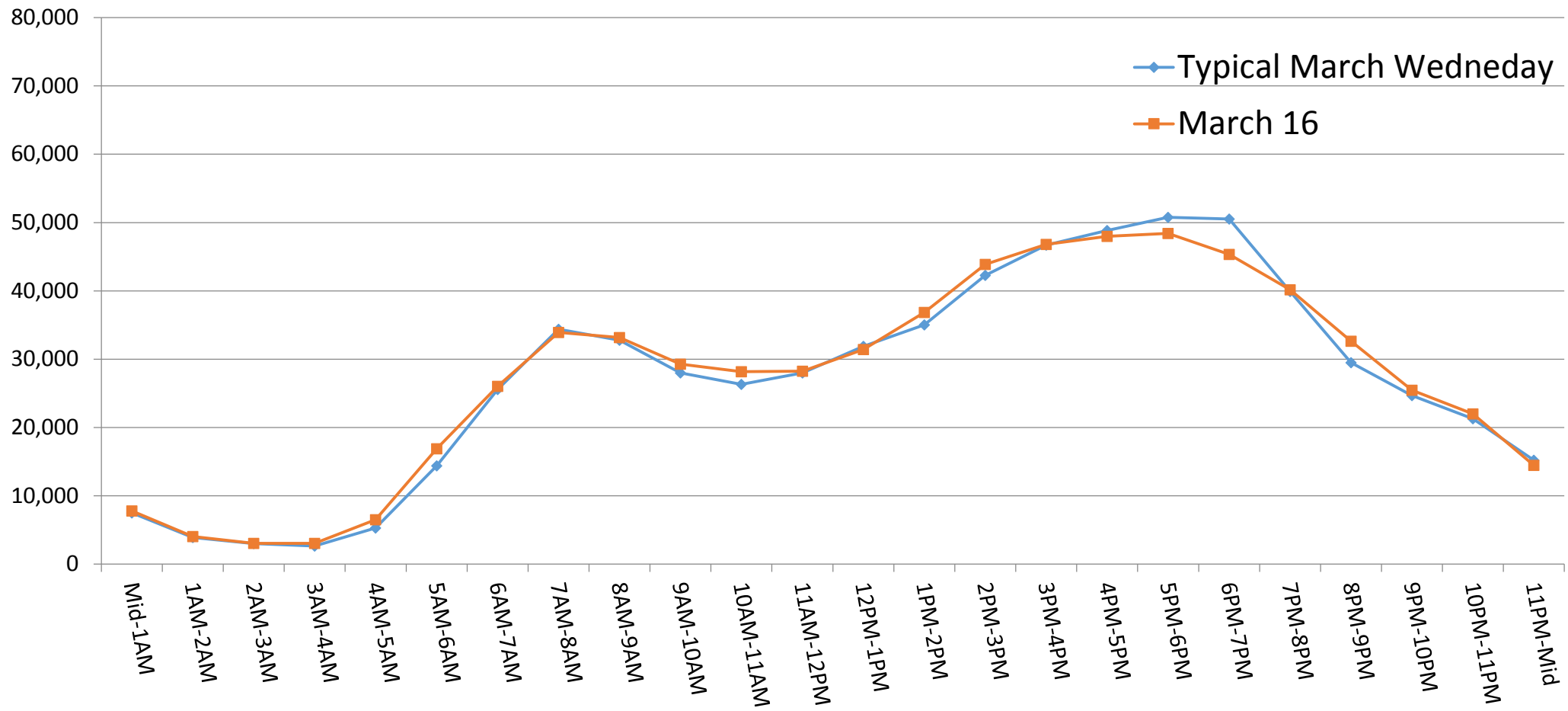
# Local Operated Transit System Ridership on Metrorail Shutdown Day



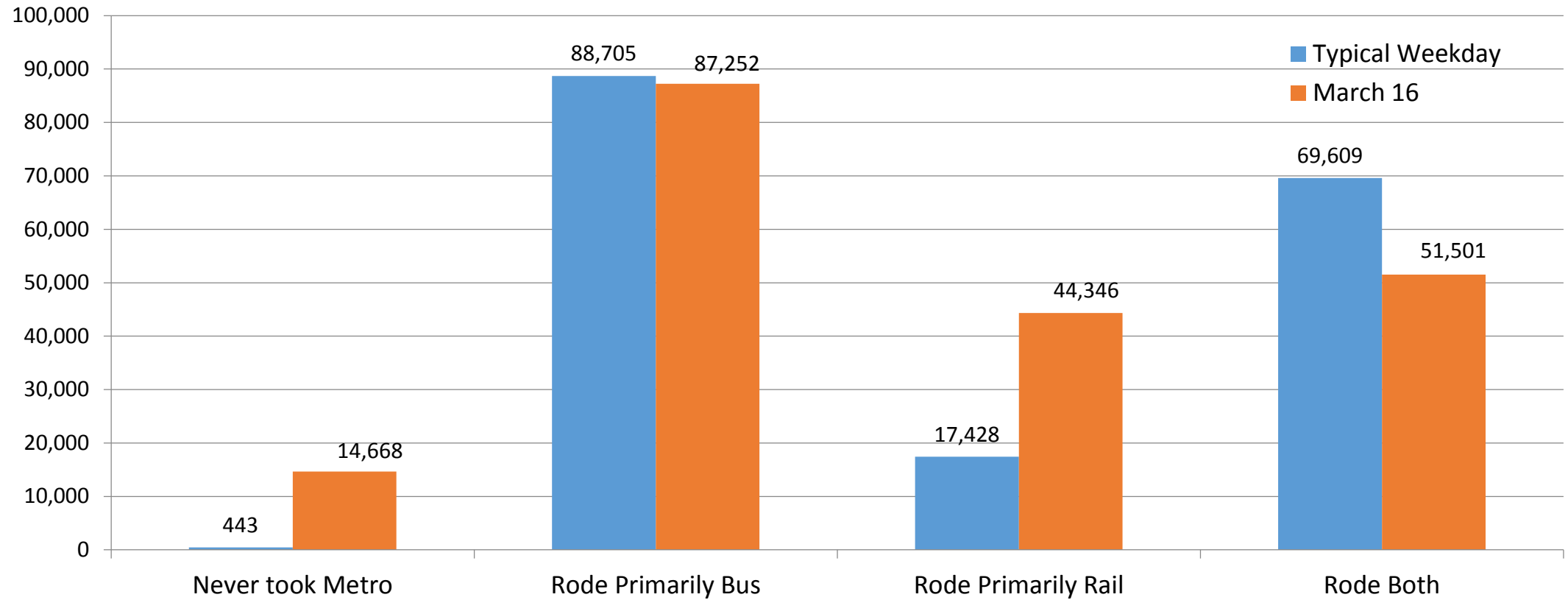
# DC Traffic Counts – Inbound to Core Area By Hour on Metrorail Shutdown



# DC Traffic Counts – Outbound from Core Area By Hour on Metrorail Shutdown Day



# Metrobus Ridership by Prior Metrorail Usage on Metrorail Shutdown Day



# Metrorail Day Shutdown Ridesharing Registrations

Date	Number of Registrations	Percentage Increase from Average
AVERAGE /DAY	26	
15-MAR-16	30	
16-MAR-16	130	400%
17-MAR-16	183	604%

## Metro Shutdown Matchlists Requests

Date	Number of Registrations	Percentage Increase from Average
AVERAGE /DAY	44	
15-MAR-16	34	
16-MAR-16	50	14%
17-MAR-16	56	27%



# Percent Teleworking by Primary Commute Mode

