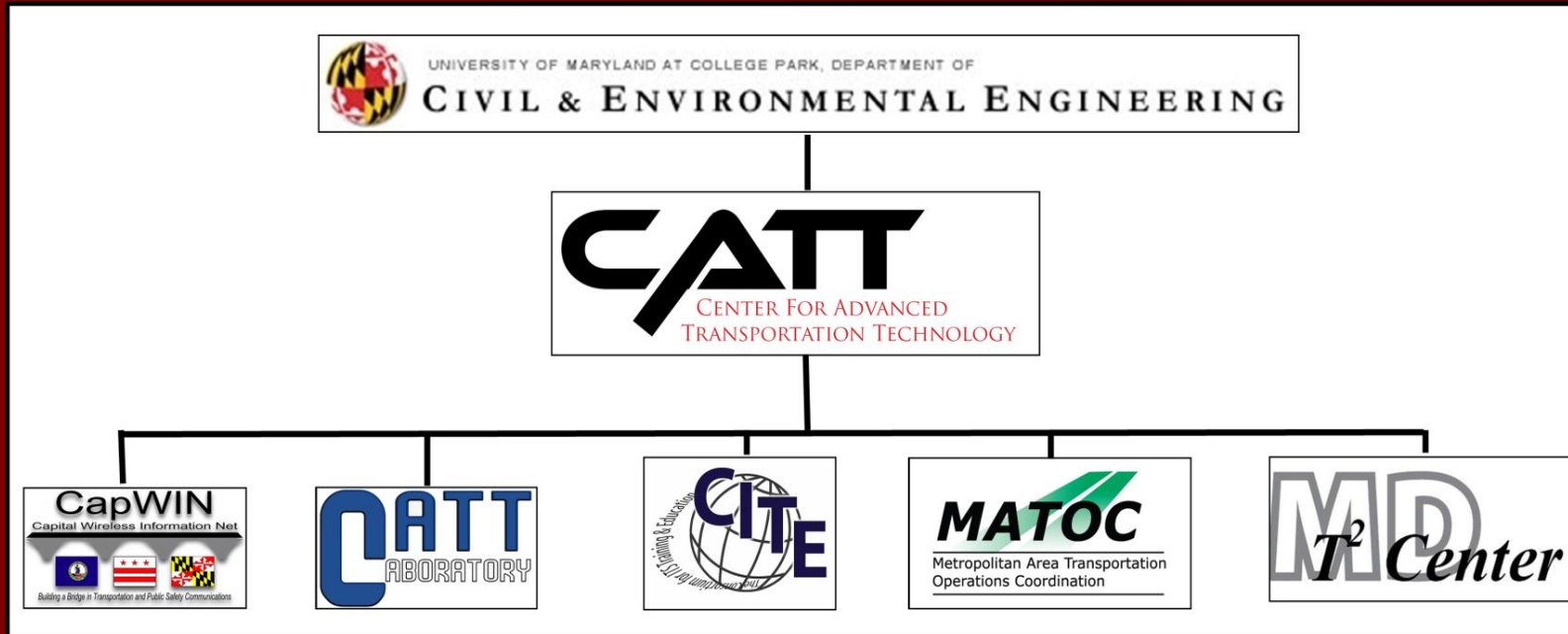




# CATT

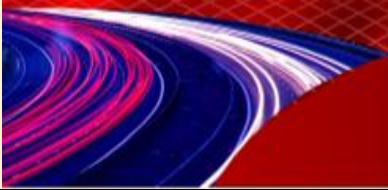
- The Center for Advanced Transportation Technology (CATT) at the University of Maryland, College Park was created in order to respond to the significant changes brought about by increasing use of advanced technologies in the transportation field.
- CATT provides an organizational umbrella for five major including CapWIN, CATT Lab, CITE, MATOC, and MD T2 Center.





# CATT Programs ([www.catt.umd.edu](http://www.catt.umd.edu))

- CATT Lab – Center for Advanced Transportation Laboratory ([www.cattlab.umd.edu](http://www.cattlab.umd.edu))
- CapWIN – Capital Wireless Information Net ([www.capwin.org](http://www.capwin.org))
- CITE – Consortium for ITS Education ([www.citeconsortium.org](http://www.citeconsortium.org))
- MATOC – Metropolitan Area Transportation Operations Coordination ([www.matoc.org](http://www.matoc.org))
- MD T2 Center – Maryland Technology Transfer Center ([www.mdt2center.umd.edu](http://www.mdt2center.umd.edu))
- ✓ I-95 Corridor Coalition Support ([www.i95coalition.org](http://www.i95coalition.org))
- ✓ Operations Academy™ ([www.operationsacademy.org](http://www.operationsacademy.org))

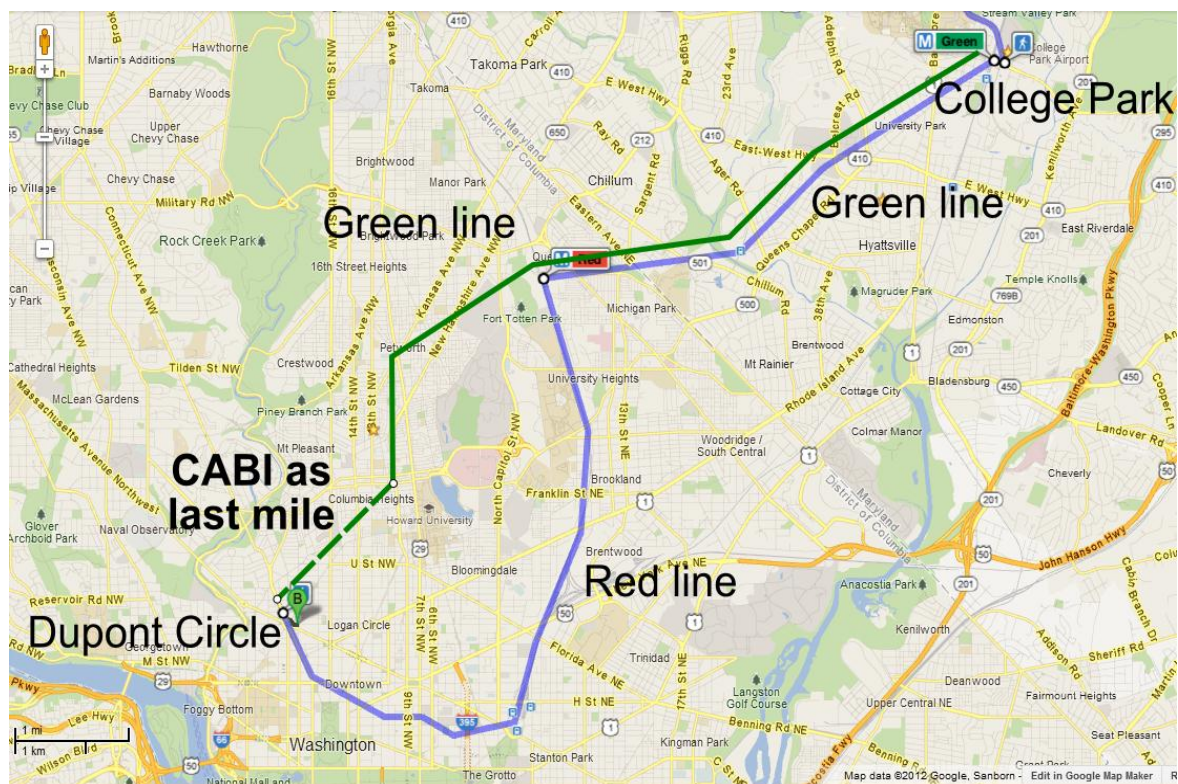


# Intermodal Paths

- Integrate transit and bike-sharing services in Washington
  - **WMATA + CABI**
- Develop journey planner that
  - Uses real-time bike availability, and
  - Transit schedules
- To generate optimal journey plans that combine the two modes

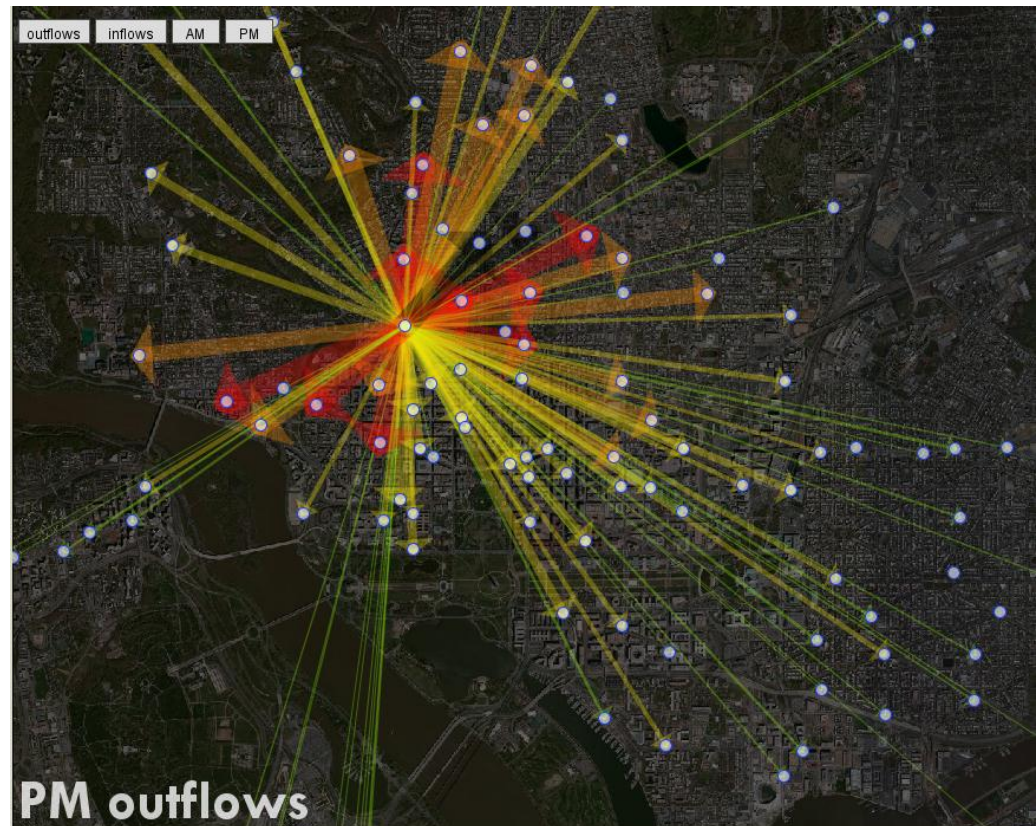


- College Park to Dupont Circle
- *Trip plan 1: Green line – Red line (~40 min)*
- *Trip plan 2: Green line + CABI (~24 min)*
  - *Function of availability*





- Understanding how CABI is being used
  - Developed “reliability curves” for each station
  - OD visualization at
  - <http://terpconnect.umd.edu/~rahul/CABI/>
- Router targeted for August 1<sup>st</sup>.





Presentation



Researchers



Media/3<sup>rd</sup> Parties



511  
Travel Info



Travelers

Integration



Data



Traffic



Events



Parking



Weather



Signals



CAD



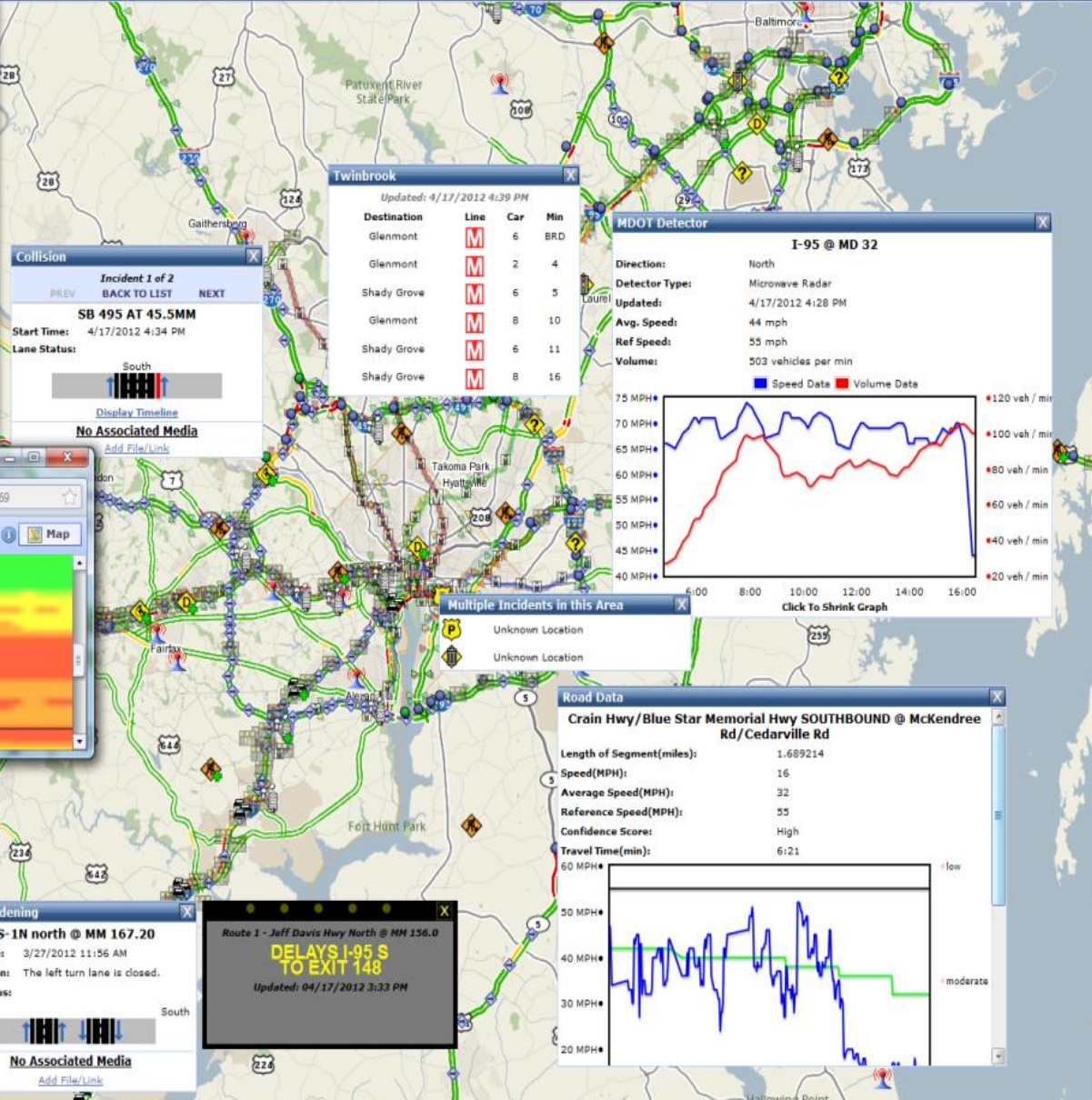
Transit



RITIS | Regional Integrated Transportation Information System

File Edit View History Bookmarks Tools Help

I-270 S OF BALTY



**Collision**

Incident 1 of 2  
BACK TO LIST NEXT

**SB 495 AT 45.5MM**

Start Time: 4/17/2012 4:34 PM

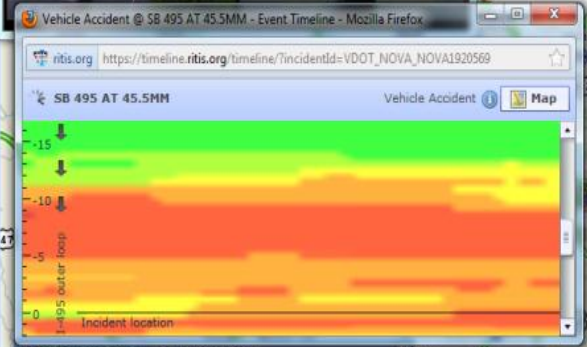
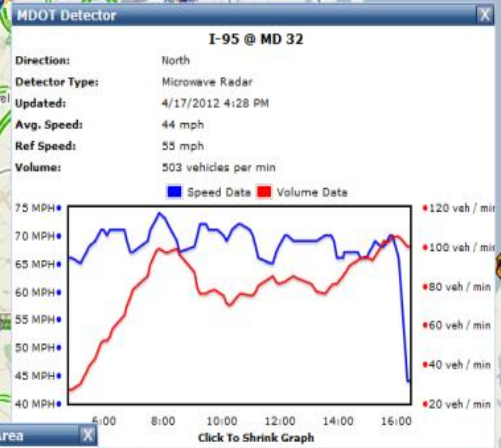
Lane Status:

South

No Associated Media

Updated: 4/17/2012 4:39 PM

Destination	Line	Car	Min
Glenmont	M	6	BRD
Glenmont	M	2	4
Shady Grove	M	6	5
Glenmont	M	8	10
Shady Grove	M	6	11
Shady Grove	M	8	16



Weather Station for 100 HAYMARKET

Apr 17, 2012 4:16 PM

3.1 MPH

Air 70°F Surface 93°F

Temperature

Road Surface

Surface Status: Dry

Road Salinity: ---

Visibility: Poor to High

Precipitation: Rate --- Accumulated Depth ---

**Road Widening**

**US-1N north @ MM 167.20**

Start Time: 3/27/2012 11:56 AM

Description: The left turn lane is closed.

Lane Status:

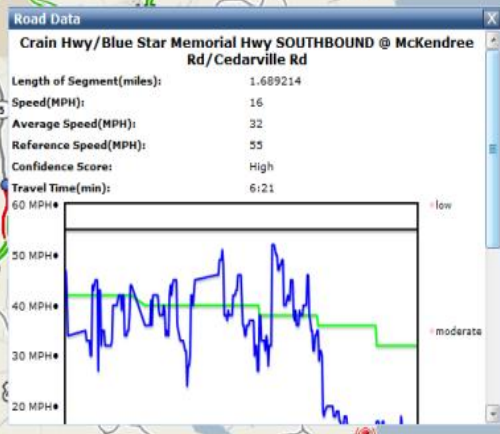
North South

No Associated Media

**Route 1 - Jeff Davis Hwy North @ MM 156.0**

**DELAYS I-95 S TO EXIT 148**

Updated: 04/17/2012 3:33 PM



Hide Layer List

- Road Weather
- Incidents and Events
- Dynamic Message Signs
- CCTV Feeds
- Traffic Detectors
- Radio Scanners
- ETIM Plans
- Evacuation Support
- Metro Routes
- INRIX Speed Data
- Weather Alerts
- Weather Radar

Radio Feeds

- Montgomery County, MD
- Montgomery County Fire...
- NCR - Public Safety Inte...
- Montgomery County Poli...
- Montgomery County Poli...
- National Hurricane Cent...
- Prince William County, VA
- Prince William Police Eas...
- Prince William County P...
- NCR - Public Safety Inte...
- Prince William County Fir...
- 147,300 WA4TSC Repea...
- Prince William County Fire
- National Hurricane Cent...
- Fairfax (County) County, VA
- WA4TSC 147,300MHz Bl...
- Fairfax County Police De...
- Fairfax County Fire and ...
- Metropolitan Washingto...
- NCR - Public Safety Inte...
- National Hurricane Cent...

Show Unmapped Incidents

MILES 0 2 4 6 8



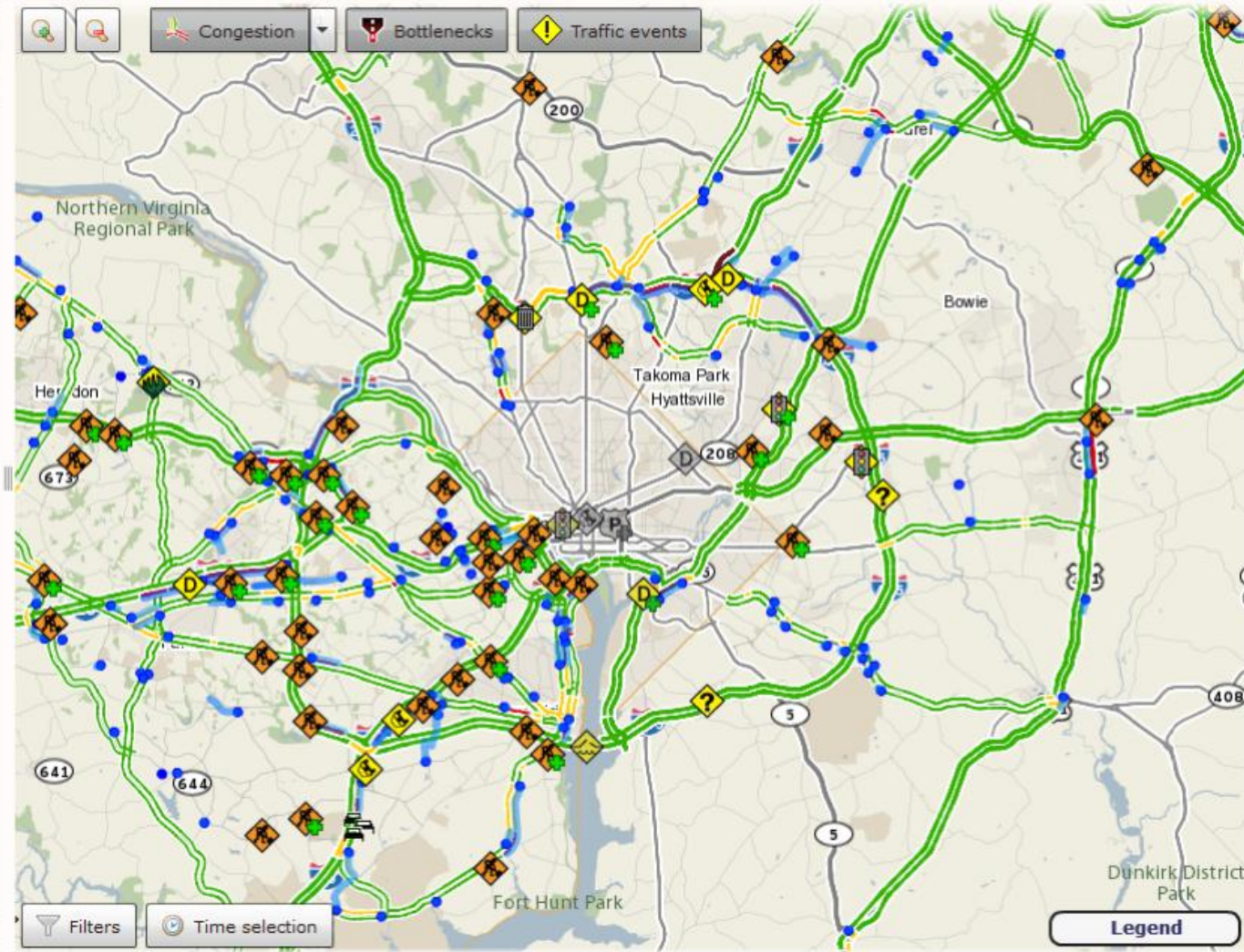
## Vehicle Probe Project Suite Dashboard

[Data exports](#) [Settings](#) [Help](#)

Nest bottlenecks and events

[Congestion](#) [Bottlenecks](#) [Traffic events](#)

- Blue Ridge Pkwy E @ US-58
- VA-42 E @ VA-658
- Blue Ridge Pkwy W @ VA-89/Skyline Hwy
- Blue Ridge Pkwy E @ VA-97/Lambsburg R
- NC-28 E @ Upper Tuskegee
- Blue Ridge Pkwy W @ Bell Ln
- NC-211 E @ W Palmer Ave/Mockingbird H
- I-495 CW @ MD-295/MD-193/Exit 22
- I-95 S @ US-1/VA-610/Exit 143
- NC-66 N @ NC-89
- US-64 W @ I-26/US-74
- US-501 N @ US-501/SC-544
- I-40 W @ Rock Barn Rd/Exit 133
- Blue Ridge Pkwy W @ Franklin Pike
- Garden State Pkwy N @ NJ-72/Exit 63
- I-495 CCW @ VA-267/Exit 12
- I-95 N @ US-301/Exit 25
- US-17 S @ US-17 Bus
- US-29 S @ Cedar Ln
- VA-39 E @ US-220 (Warm Springs) (West
- I-81 N @ Scranton Expy/Exit 185
- I-395 N @ VA-236/Duke St/Exit 3
- Evergreen Mills Rd S @ VA-659/Belmont F
- VA-234 S @ Lake Jackson Dr/Coles Dr
- I-68 W @ US-40
- I-395 HOV N @ VA-236/Duke St/Exit 3



[Filters](#) [Time selection](#)

**Legend**





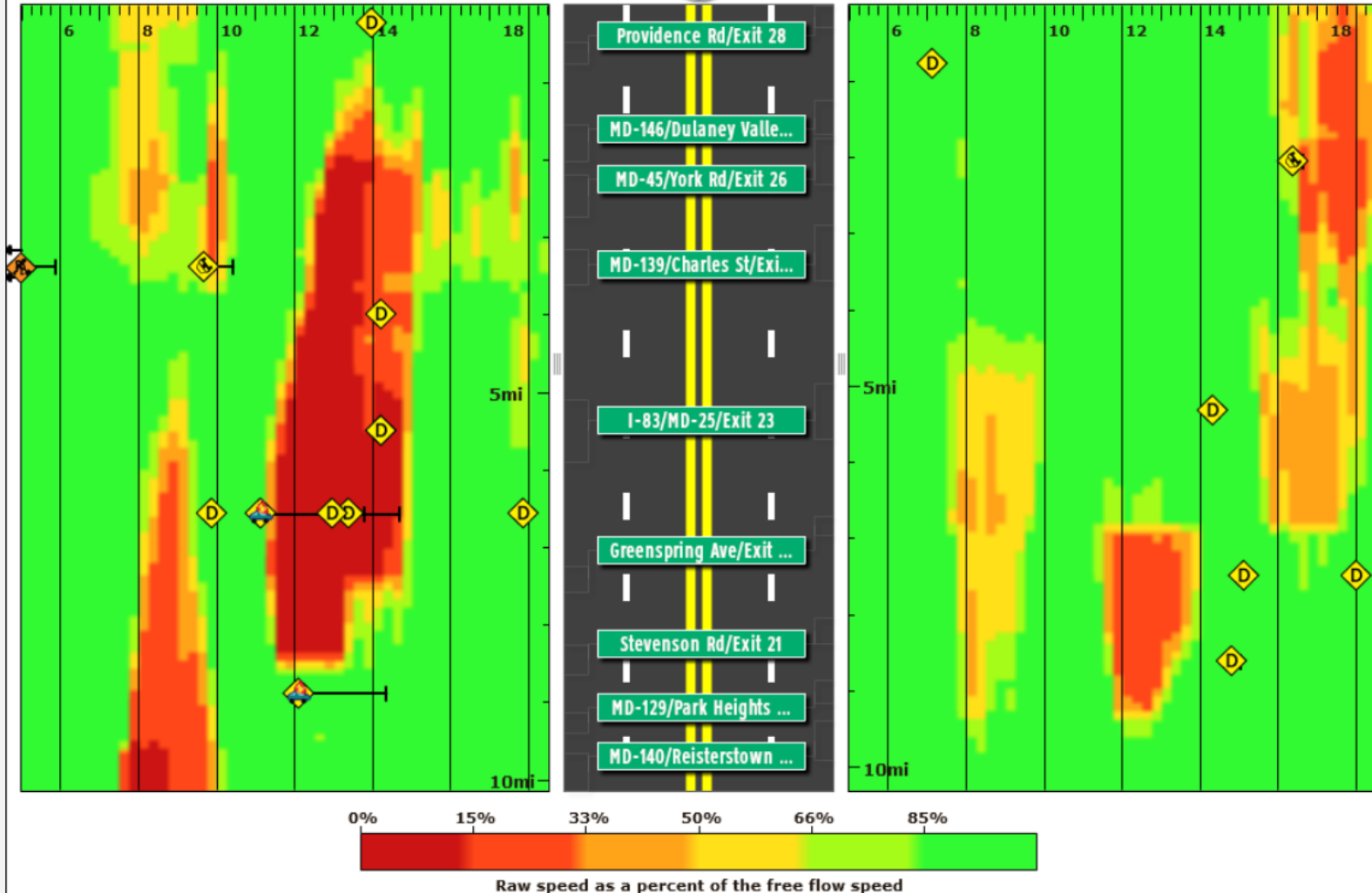
## Congestion on I-695 between MD-140/Reisterstown Rd/Exit20 and Providence Rd/Exit 28

Data shown is averaged on Mar 15, 2012 at 15 minute intervals.

↓ Counterclockwise ↓



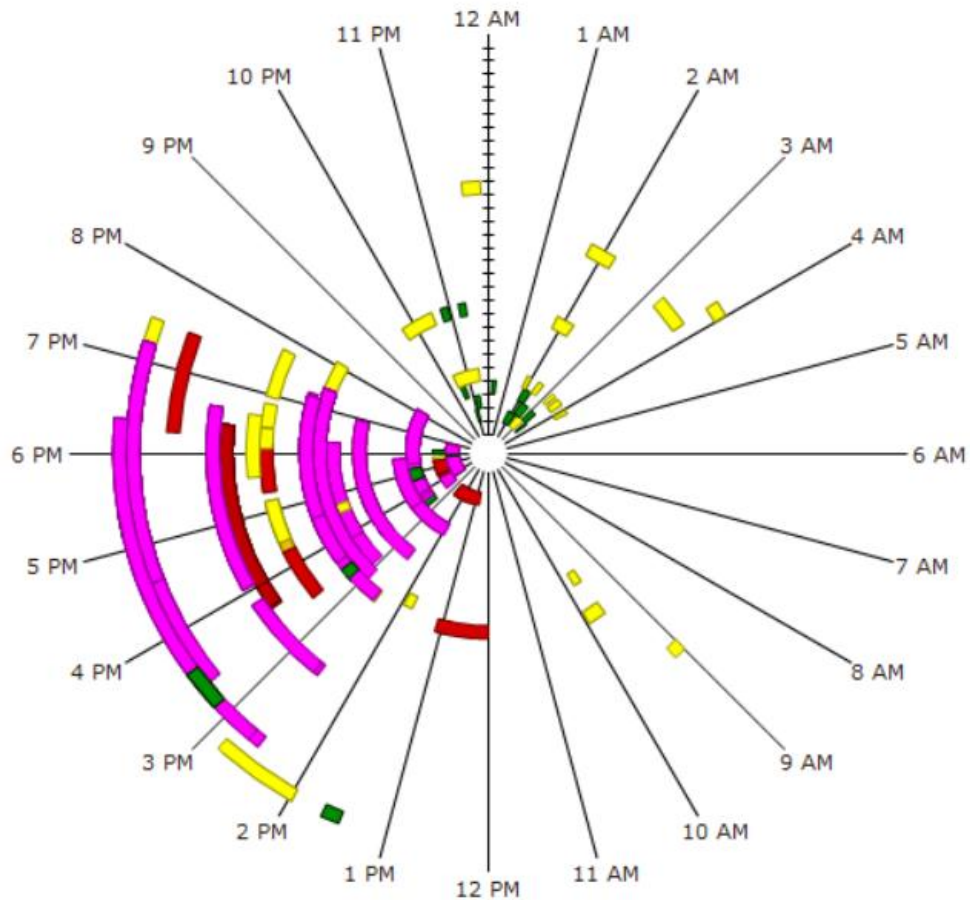
↑ Clockwise ↑





In this time spiral each trip around the circle represents a

The center represent April 1, 2012 and the outer edge represents May 1, 2012.



Maximum queue length < 1  > 10 miles